

ILLEGIB

Approved For Release 2000/09/08 : CIA-RDP78T05439A000500220023-1

Approved For Release 2000/09/08 : CIA-RDP78T05439A000500220023-1

S-19588

~~TOP SECRET~~

BRIEF

PHOTOGRAPHIC INTERPRETATION REPORT



ICBM COMPLEX, PERM, USSR PROBABLE LAUNCH SITE GI3

Declass Review by NIMA/DOD

TCS-80907/65

COPY 4

1 PAGE

JULY 1965

handle via **TALENT-KEYHOLE** control only

GROUP 1 EXCLUDED FROM AUTOMATIC DOWNGRADING AND DECLASSIFICATION

~~TOP SECRET~~

TOP SECRET RUFF

Handle Via
TALENT-KEYHOLE
Control System Only

TCS-80907/65
July 1965

NATIONAL PHOTOGRAPHIC INTERPRETATION CENTER

NAME

Perm ICBM Complex, Probable Launch Site G13*

COUNTRY

USSR

GEO COORDINATES

57-41N 056-15E

WAC

0156

BE NO

None

NPIC NO

1619

COMOR NO

None

REFERENCES



25X1D

Location: 1.8 nm West of the Complex Support Facility 25X1D

Type: IIID

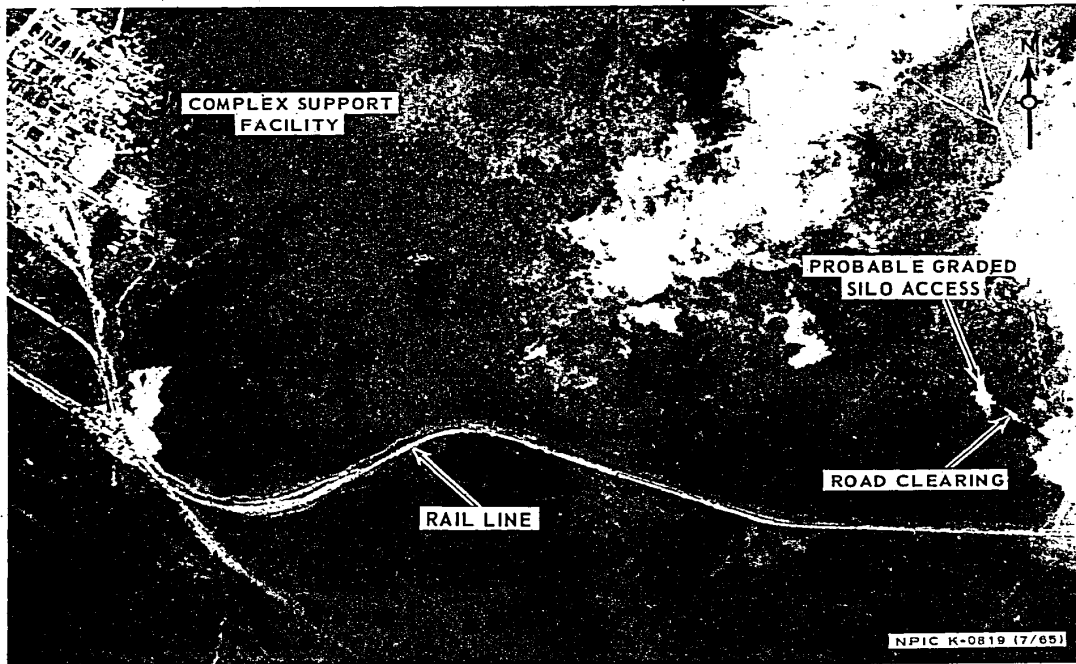
Negation Date:



Stage of Construction: Undetermined Date First Seen:

This newly identified site contains a probable characteristic graded earthen silo access. The access is parallel to those at the other single-silo sites at this complex. A clearing for a road leads from the complex main road to the site. Poor quality, non-stereo photography precludes additional details.

*Tentative group/site designator.



Handle Via
TALENT-KEYHOLE
Control System Only

TOP SECRET RUFF