

ILLEGIB

Approved For Release 2000/09/08 : CIA-RDP78T05439A000500220022-2

Approved For Release 2000/09/08 : CIA-RDP78T05439A000500220022-2

S-18587

~~TOP SECRET~~

# BRIEF

PHOTOGRAPHIC INTERPRETATION REPORT



Declass Review by NIMA/DOD

## ICBM COMPLEX, PERM, USSR PROBABLE LAUNCH SITE G12

TCS-80906/65  
JULY 1965  
COPY 4  
1 PAGE

handle via **TALENT-KEYHOLE** control only

GROUP 1 EXCLUDED FROM AUTOMATIC DOWNGRADING AND DECLASSIFICATION

~~TOP SECRET~~

TOP SECRET RUFF

Handle Via  
TALENT-KEYHOLE  
Control System Only

TCS-80906/65  
July 1965

NATIONAL PHOTOGRAPHIC INTERPRETATION CENTER

NAME

Perm ICBM Complex, Probable Launch Site G12\*

COUNTRY	GEO COORDINATES	WAC	BE NO	NPIC NO	COMOR NO
USSR	57-42N 056-22E	0156	None	16L9	None

REFERENCES

25X1D

Location: 1.5 nm ENE of the Complex Support Facility 25X1D

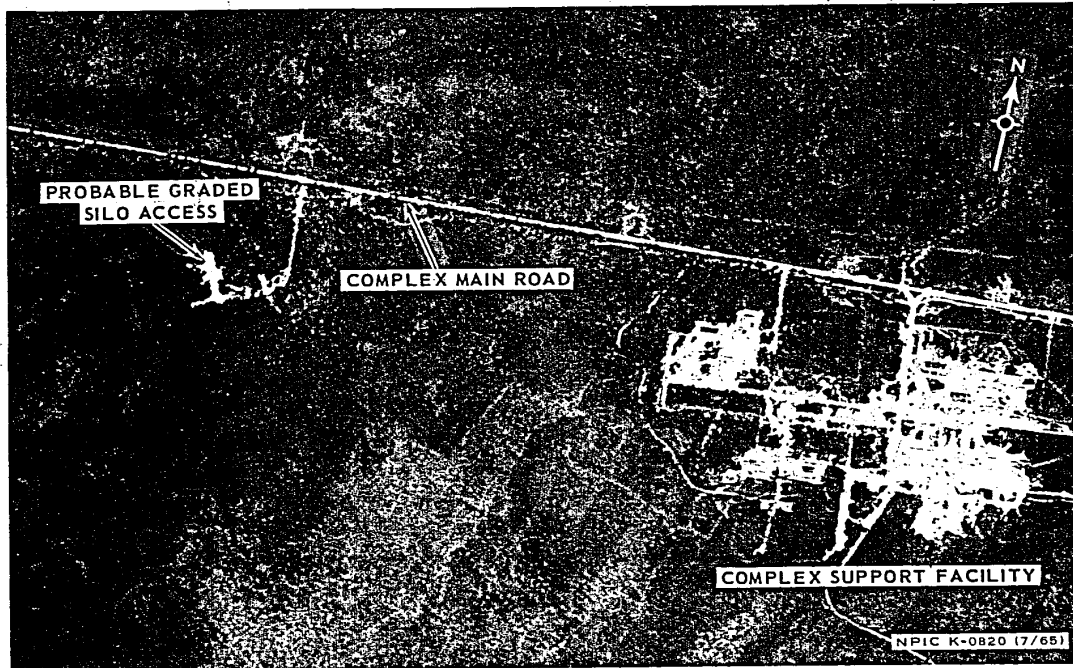
Type: IIID

Negation Date:

Stage of Construction: Undetermined Date First Seen:

This newly identified site contains a probable characteristic graded earthen silo access. The access is parallel to those at the other single-silo sites at this complex. A clearing for a road leads from the site toward a first-class road located near the rail line serving the complex support facility. Poor quality, non-stereo photography precludes additional details.

\*Tentative group/site designator.



NPIC K-0820 (7/65)

Handle Via  
TALENT-KEYHOLE  
Control System Only

TOP SECRET RUFF