

ILLEGIB

518490

~~TOP SECRET~~

# PIR

PHOTOGRAPHIC INTERPRETATION REPORT

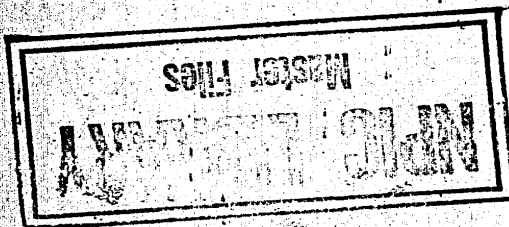
PANELED AUG 10 1965



Declass Review by NIMA/DOD

## SOVIET MILITARY ORDER OF BATTLE

### MOSCOW MD



TCS-80875/65

JULY 1965

COPY 5

6 PAGES

handle via **TALENT-KEYHOLE** control only

GROUP 1 EXCLUDED FROM AUTOMATIC DOWNGRADING AND DECLASSIFICATION

~~TOP SECRET~~

## TOP SECRET CHESS RUFF

TCS-80875/65

### PREFACE

This report is one in a series on Soviet Ground Force and Logistic installations being prepared for a DIA/CIA Panel. The series is being coordinated, published and disseminated by NPIC. The photographic analysis is being performed by the NPIC Photographic Analysis Group, the CIA Photographic Intelligence Division (NPIC), and the Production Center 1P1a (DIA). The photographic analysis for this particular report was performed by the NPIC Photographic Analysis Group.

In the interest of uniformity, the titles and letter designators for the facilities observed at these installations are identical with those appearing in the project requirement. When a specific facility is not observed both its title and letter designator are omitted in the report.

Titles and letter designators for the various facilities are as follows: (A) railroad service, (B) road service, (C) landing strips, (D) administrative and troop housing areas, (E) storage areas, (F) ammunition storage areas, (G) POL storage areas, (H) other buildings and facilities, (J) equipment storage/maintenance areas, (K) athletic fields, (L) small arms firing ranges, (M) driver training areas, (N) tank/assault gun firing ranges, (P) flat trajectory firing ranges, (Q) artillery emplacements (batteries), (R) infantry or combined arms field training area or courses, (S) special training facilities, (T) unidentified facilities or tracking activity.

TOP SECRET CHESS RUFF

Handle Via  
TALENT-KEYHOLE  
Control System Only

TCS-80875/65

SHUYA ARMY BARRACKS AND  
ASSOCIATED STORAGE AND TRAINING AREAS

(56-51N 041-22E)

SHUYA, IVANOVSKAYA OBLAST, USSR

MOSCOW MD

25X1A

AL No: 1

25X1C COMOR No:

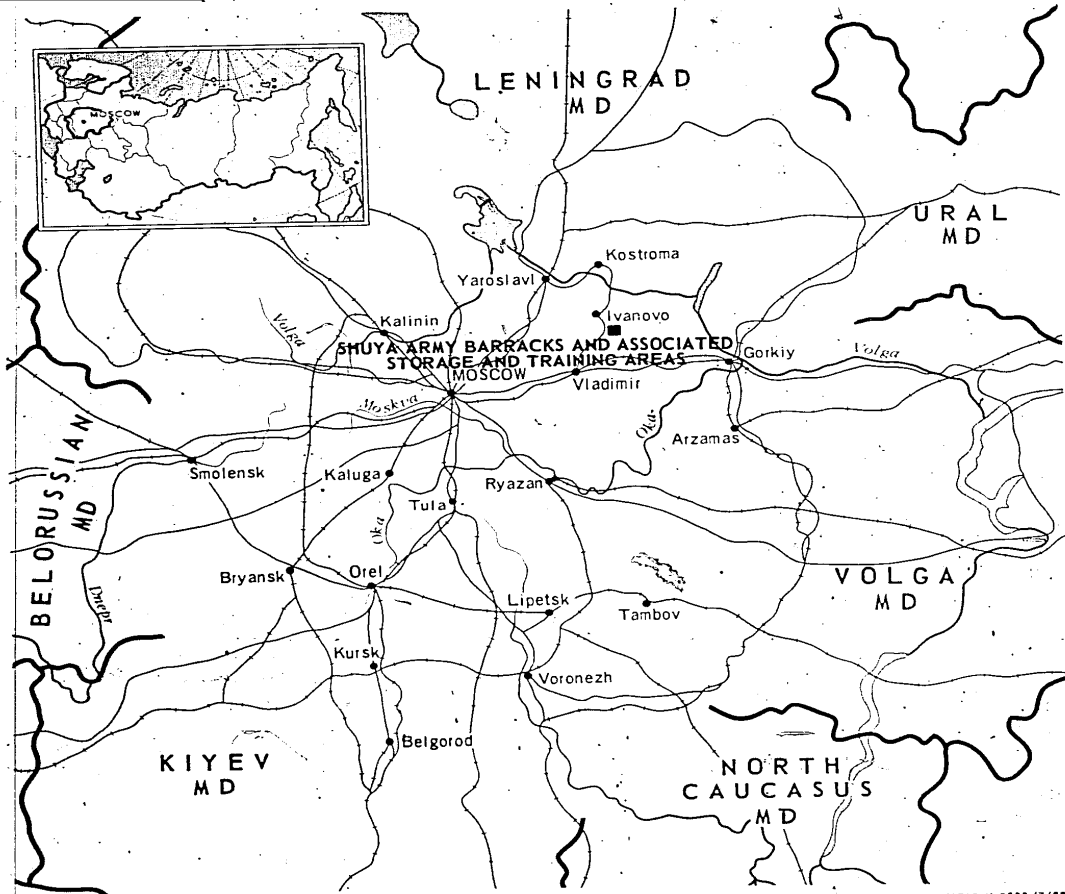


FIGURE 1. LOCATION OF SHUYA ARMY BARRACKS AND ASSOCIATED STORAGE AND TRAINING AREAS.

NPIC K-2088 (7/65)

TOP SECRET CHESS RUFF

Handle Via  
TALENT-KEYHOLE  
Control System Only

Handle Via  
TALENT KEYHOLE  
Control System Only

TOP SECRET CHESS RUFF

TCS-80875/65

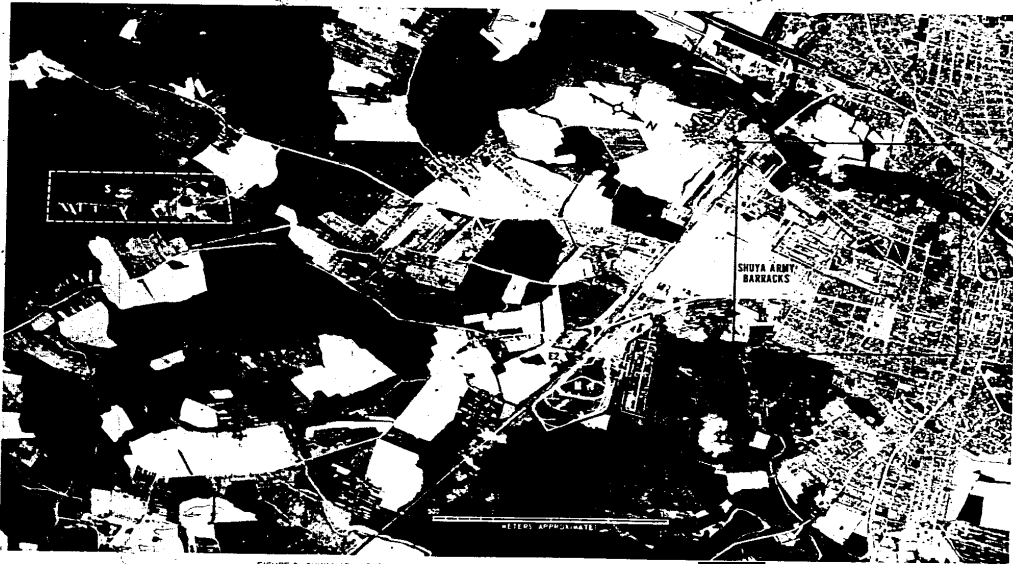


FIGURE 2. SHUYA ARMY BARRACKS AND ASSOCIATED STORAGE AND TRAINING AREAS, SHUYA, USSR

- 3 -

25X1D

TOP SECRET CHESS RUFF

Handle Via  
TALENT KEYHOLE  
Control System Only

# TOP SECRET CHESS RUFF

Handle Via  
TALENT-KEYHOLE  
Control System Only

TCS-80875/65

## SUMMARY

Shuya Army Barracks is located in the southeastern section of Shuya (Figure 1).

The barracks area covers approximately 165 acres and contains 3 administration buildings, 11 barracks, 8 barracks/quarters, 8 officers/dependents quarters, 34 storage buildings, 38 support buildings, 2 vehicle maintenance buildings, 7 vehicle sheds, 9 probable vehicle sheds, a small-arms firing range, and an athletic field (Figures 2 and 3).

An ammunition storage area containing 10 ammunition storage buildings and 5 support buildings, a storage area containing 6 storage

buildings and 1 support building, and a tracked-vehicle driver-training course are 2.2 kilometers (km) southeast of the barracks area. A probable wheeled-vehicle-mounted automatic-weapons moving-target firing range is 9.5 km south of the barracks area. One storage building and 11 support buildings are located to the rear of the range (Figure 2).

The installation was covered on KEYHOLE missions between [REDACTED]

[REDACTED] Comparative analysis reveals no significant changes in facilities and a high level of activity throughout the period.

25X1D

25X1D

## DESCRIPTION OF INSTALLATION

### Road Service

All-weather roads provide access to Shuya and to the associated training areas.

### Administrative and Troop Housing Areas

Area D1 contains 3 administration buildings, 11 barracks, 8 barracks/quarters, 2 storage buildings, and 6 support buildings.

Area D2 contains 8 officers/dependents quarters.

### General Storage Areas

Area E1 contains 27 storage buildings and 18 support buildings.

Area E2, an associated secured storage area located 2.3 km southeast of the barracks area, contains 6 storage buildings and 1 support building.

### Ammunition Storage Area

Area F, located 2.2 km southeast of the barracks area, contains 10 storage buildings and 5

support buildings. This double-secured storage area is associated with the barracks area.

### Equipment Storage/Maintenance Areas

Area J1 contains 1 vehicle maintenance building (195 by 60 feet), 3 vehicle sheds (two 240 by 35 feet and one 220 by 35 feet), 1 storage building, and 8 support buildings.

Area J2 contains 1 vehicle maintenance building (200 by 65 feet), 4 vehicle sheds (two by 40 feet each), 9 probable vehicle sheds (five 200 by 40 feet, three 180 by 40 feet, and one 130 by 40 feet), 4 storage buildings, and 6 support buildings.

### Athletic Field

Area K is an athletic field.

### Small-Arms Firing Range

Area L is a 375- by 75-foot small-arms firing range which appears active.

- 4 -

TOP SECRET CHESS RUFF

Handle Via  
TALENT-KEYHOLE  
Control System Only

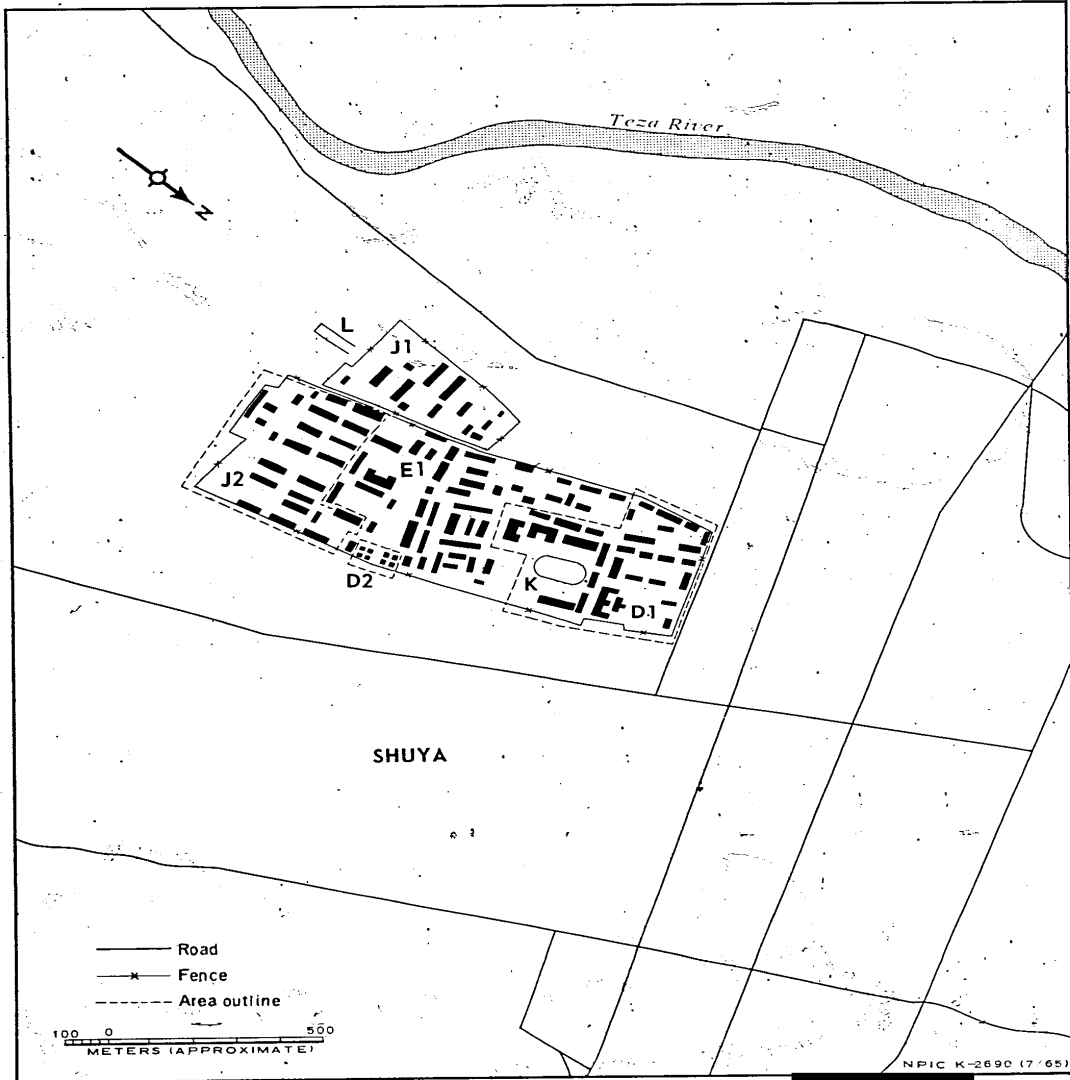


FIGURE 3. SHUYA ARMY BARRACKS. Sketch compiled from Mission [REDACTED]

25X1D

TOP SECRET CHESS RUFF

Handle Via  
TALENT-KEYHOLE  
Control System Only

TCS-80875/65

Driver-Training Area

Area M is a closed-circuit, tracked-vehicle driver-training course located 2.2 km southeast of the barracks area. Several raised obstacles are on the course.

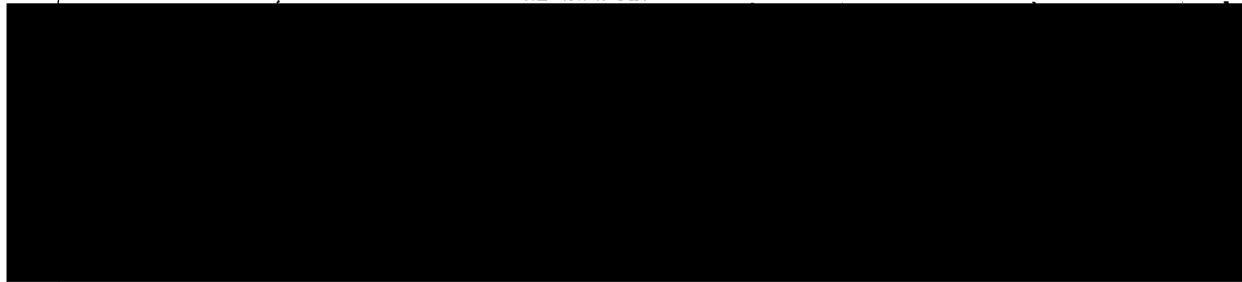
mounted automatic-weapons moving-target firing range located 9.5 km south of the barracks area. Firing is from an oval track with a maximum firing distance of 3,000 feet. One storage building and 11 support buildings are associated with the range.

Special Training Facility

Area S is a probable wheeled-vehicle

25X1D

REFERENCES



MAPS OR CHARTS

US Air Target Chart, Series 200. Sheet 0154-19HL. 2d ed, Feb 63 (SECRET)

DOCUMENTS

Army. PIB/TK/12-63, Barracks and Storage Areas, Shuya, Feb 63 (TOP SECRET RUFF)

25X1C

REQUIREMENTS

C-RR4-51,733 (partial answer)

NPIC PROJECT

11709/64.