

ILLEGIB

~~TOP SECRET~~

5-18464
PIR

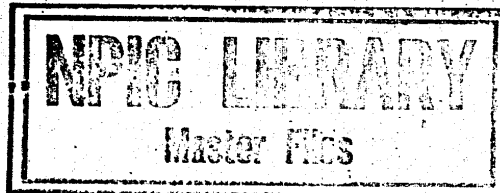
PHOTOGRAPHIC INTERPRETATION REPORT



Declass Review by NIMA/DOD

SOVIET MILITARY ORDER OF BATTLE

TURKESTAN MD



TCS-80665/65

JULY 1965

COPY 4

6 PAGES

handle via **TALENT-KEYHOLE** control only

GROUP 1 EXCLUDED FROM AUTOMATIC DOWNGRADING AND DECLASSIFICATION

~~TOP SECRET~~

TOP SECRET CHESS RUFF

Handle Via
TALENT-KEYHOLE
Control System Only

TCS-80665/65

PREFACE

This report is one in a series on Soviet Ground Force and Logistic installations being prepared for a DIA/CIA Panel. The series is being coordinated, published and disseminated by NPIC. The photographic analysis is being performed by the NPIC Photographic Analysis Group, the CIA Photographic Intelligence Division (NPIC), and the Production Center 1P1a (DIA). The photographic analysis for this particular report was performed by the CIA Photographic Intelligence Division.

In the interest of uniformity, the titles and letter designators for the facilities observed at these installations are identical with those appearing in the project requirement. When a specific facility is not observed both its title and letter designator are omitted in the report.

Titles and letter designators for the various facilities are as follows: (A) railroad service, (B) road service, (C) landing strips, (D) administrative and troop housing areas, (E) storage areas, (F) ammunition storage areas, (G) POL storage areas, (H) other buildings and facilities, (J) equipment storage/maintenance areas, (K) athletic fields, (L) small arms firing ranges, (M) driver training areas, (N) tank/assault gun firing ranges, (P) flat trajectory firing ranges, (Q) artillery emplacements (batteries), (R) infantry or combined arms field training areas or courses, (S) special training facilities, (T) unidentified facilities or tracking activity.

- 1 -

TOP SECRET CHESS RUFF

Handle Via
TALENT-KEYHOLE
Control System Only

TOP SECRET CHESS RUFF

Handle Via
TALENT-KEYHOLE
Control System Only

TCS-80665/65

TASHKENT ARMY SUPPLY DEPOT SKLAD 28
(41-16N 069-18E)

TASHKENT, TASHKENTSKAYA OBLAST, USSR

TURKESTAN MD

25X1A

25X1A

25X1C

AL No: [REDACTED]

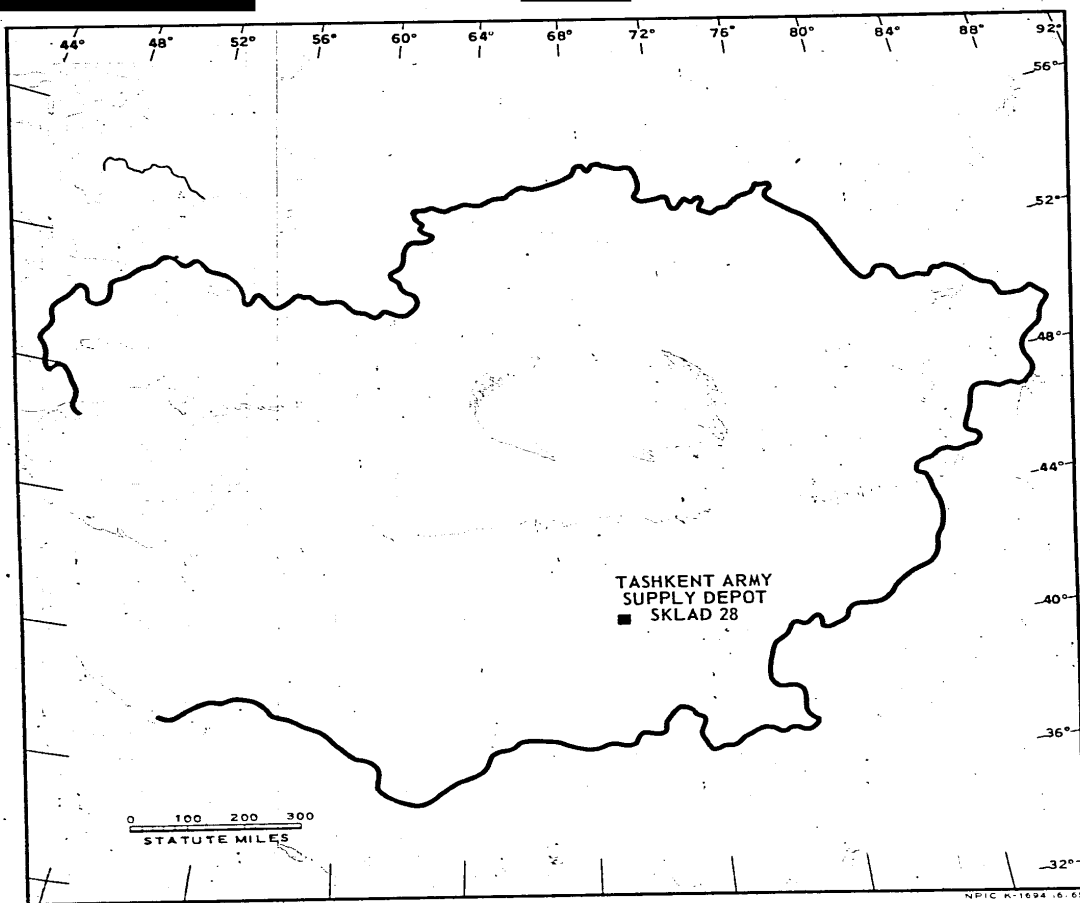


FIGURE 1. LOCATION OF TASHKENT ARMY SUPPLY DEPOT SKLAD 28.

Handle Via
TALENT-KEYHOLE
Control System Only

Handle Via
TALENT-KEYHOLE
Control System Only

TCS-80665/65

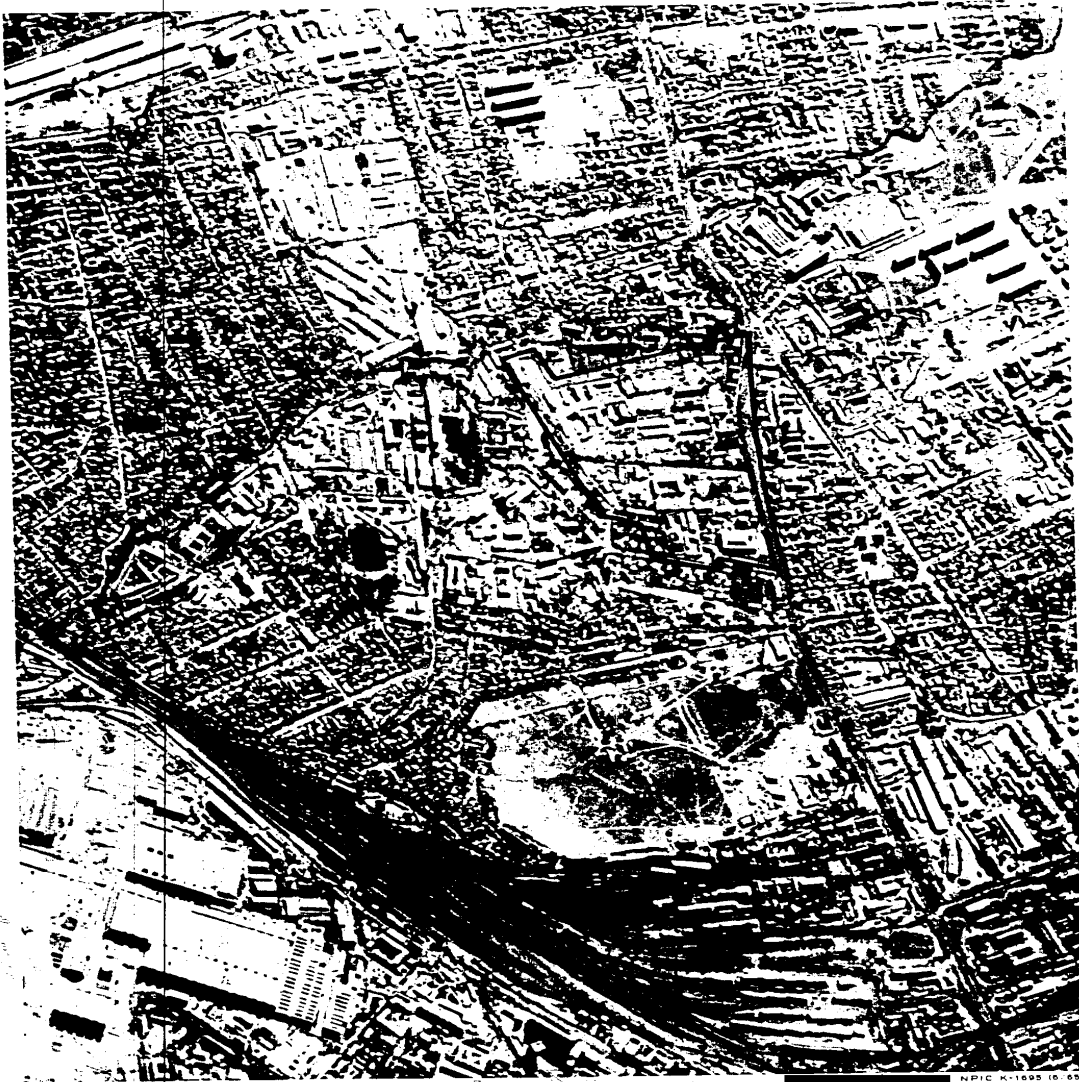


FIGURE 2. TASHKENT ARMY SUPPLY DEPOT SKLAD 28, TASHKENT, USSR

25X1D

Handle Via
TALENT-KEYHOLE
Control System Only

TOP SECRET CHESS RUFF

Handle Via
TALENT-KEYHOLE
Control System Only

TCS-80665/65

SUMMARY

Tashkent Army Supply Depot Sklad 28 is located in the southeast part of Tashkent on the west side of the Yangi Yul-Tashkent rail line (Figure 1).

The installation covers approximately 70 acres, is secured by a wall, and contains 3 barracks/administration buildings, 52 general

storage buildings, 2 probable maintenance buildings, and 7 support buildings (Figures 2 and 3).

The area is covered by [REDACTED] TALENT photography and [REDACTED] KEYHOLE missions between [REDACTED]. No change in facilities was observed and the installation has a light level of activity on all coverage.

25X1D

25X1D

DESCRIPTION OF INSTALLATION

Railroad Service

The depot is served by a spur from the main rail line which passes through Tashkent.

Road Service

City streets serve the installation.

Administration and Troop Housing Area

Area D contains 3 barracks/administration buildings.

General Storage Area

Area E contains 52 general storage buildings, 2 monitor-roofed probable maintenance buildings, and 7 support buildings.

POL Storage Area

Four large and approximately 20 small tanks are located 5 kilometers (km) north at 41-19-45N 069-18-30E.

TOP SECRET CHESS RUFF

Handle Via
TALENT-KEYHOLE
Control System Only

TCS-80665/65

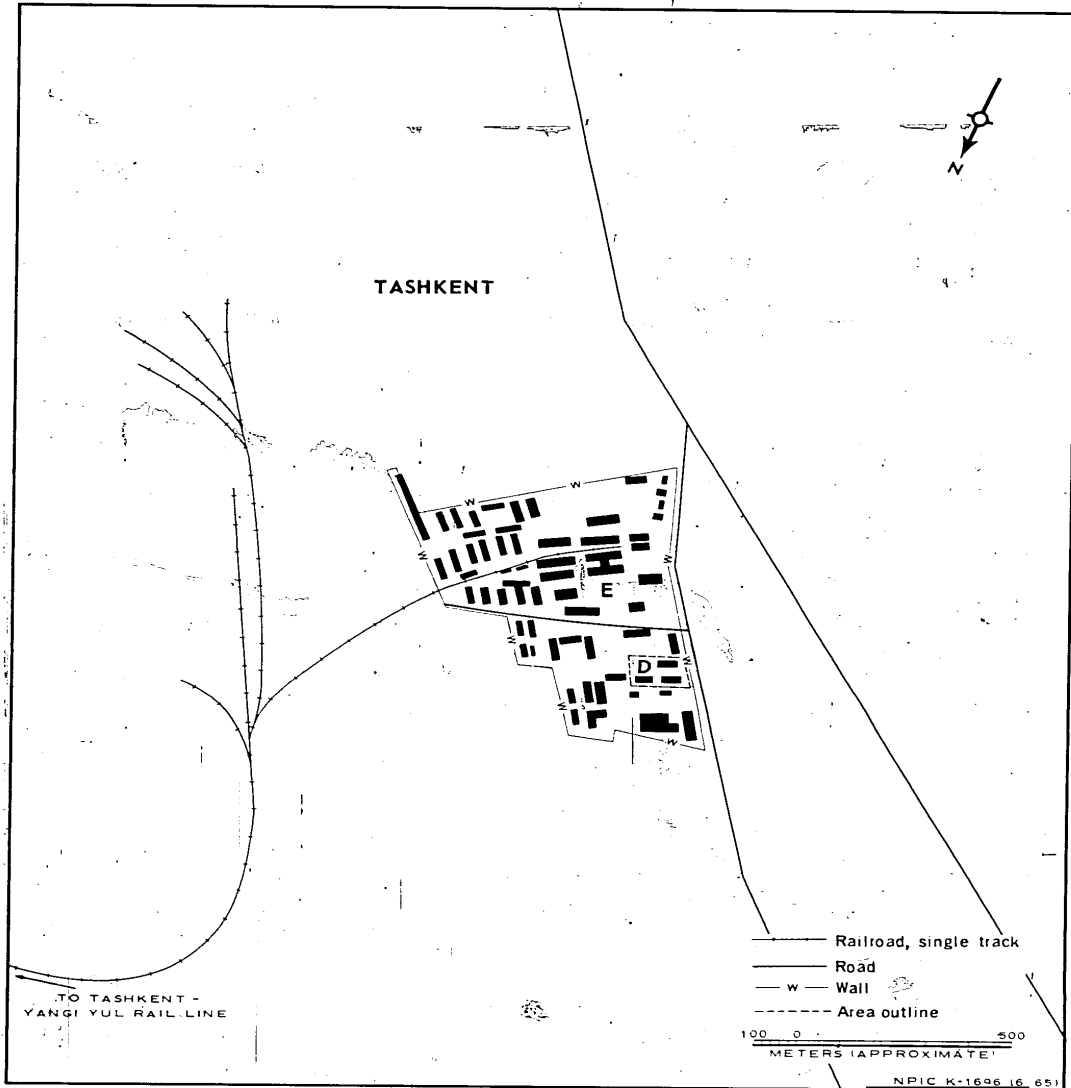


FIGURE 3. TASHKENT ARMY SUPPLY DEPOT SKLAD 28. Sketch compiled from [REDACTED]

25X1D

25X1D

Handle Via
TALENT-KEYHOLE
Control System Only

TOP SECRET CHESS RUFF

Handle Via
TALENT-KEYHOLE
Control System Only

TCS-80665/65

25X1D

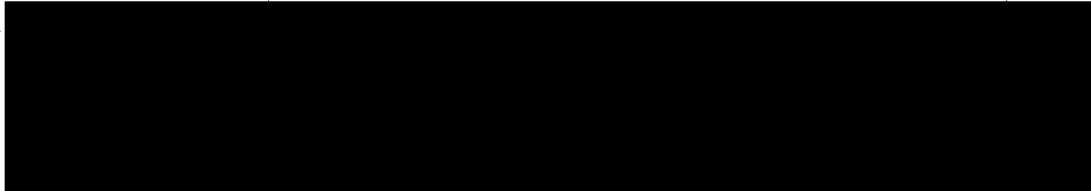
REFERENCES



MAPS OR CHARTS

25X1C

US Air Target Chart, Series 200, Sheet 0328-17AL, 2d ed, May 60 (SECRET)



REQUIREMENT

C-RR4-81.615 (partial answer)

NPIC PROJECT

11908 '64

Handle Via
TALENT-KEYHOLE
Control System Only