

ILLEGIB

~~TOP SECRET~~

S-18437

Copy 7
6 Pages

TCS-80732/65
June 1965

PHOTOGRAPHIC INTERPRETATION REPORT

SOVIET MILITARY ORDER OF BATTLE MOSCOW MD

PANELED JUL 23 1965

Declass Review by NIMA/DOD



CIA

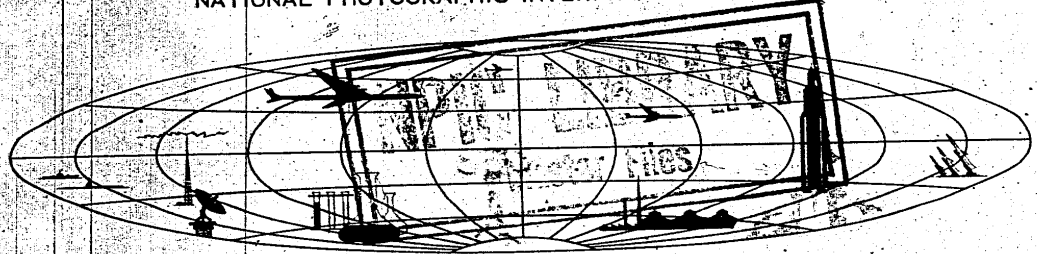
DIA

Handle Via **TALENT - KEYHOLE** Control Only

WARNING

This document contains classified information affecting the national security of the United States within the meaning of the espionage laws U. S. Code, Title 18, Sections 793 and 794. The law prohibits its transmission or the revelation of its contents in any manner to an unauthorized person, as well as its use in any manner prejudicial to the safety or interest of the United States or for the benefit of any foreign government to the detriment of the United States. It is to be seen only by personnel especially indoctrinated and authorized to receive TALENT-KEYHOLE information. Its security must be maintained in accordance with KEYHOLE and TALENT regulations.

NATIONAL PHOTOGRAPHIC INTERPRETATION CENTER



~~TOP SECRET~~

GROUP 1
Excluded from automatic
downgrading and declassification

TOP SECRET RUFF

Handle Via
TALENT-KEYHOLE
Control System Only

TCS-80732/65

PREFACE

This report is one in a series on Soviet Ground Force and Logistic installations being prepared for a DIA/CIA Panel. The series is being coordinated, published and disseminated by NPIC. The photographic analysis is being performed by the NPIC Photographic Analysis Group, the CIA Photographic Intelligence Division (NPIC), and the Production Center 1P1a (DIA). The photographic analysis for this particular report was performed by the NPIC Photographic Analysis Group.

In the interest of uniformity, the titles and letter designators for the facilities observed at these installations are identical with those appearing in the project requirement. When a specific facility is not observed both its title and letter designator are omitted in the report.

Titles and letter designators for the various facilities are as follows: (A) railroad service, (B) road service, (C) landing strips, (D) administrative and troop housing areas, (E) storage areas, (F) ammunition storage areas, (G) POL storage areas, (H) other buildings and facilities, (J) equipment storage/maintenance areas, (K) athletic fields, (L) small arms firing ranges, (M) driver training areas, (N) tank/assault gun firing ranges, (P) flat trajectory firing ranges, (Q) artillery emplacements (batteries), (R) infantry or combined arms field training area or courses, (S) special training facilities, (T) unidentified facilities or tracking activity.

- 1 -

TOP SECRET RUFF

Handle Via
TALENT-KEYHOLE
Control System Only

TOP SECRET RUFF

Handle Via
TALENT-KEYHOLE
Control System Only

TCS-80732/65

BUDA MALTSEVSKAYA AMMUNITION DEPOT SOUTHEAST

(53-50N 035-04E)

BUDA, KALUZHSKAYA OBLAST, USSR

MOSCOW MD

25X1A

AL No:

25X1C COMOR No:

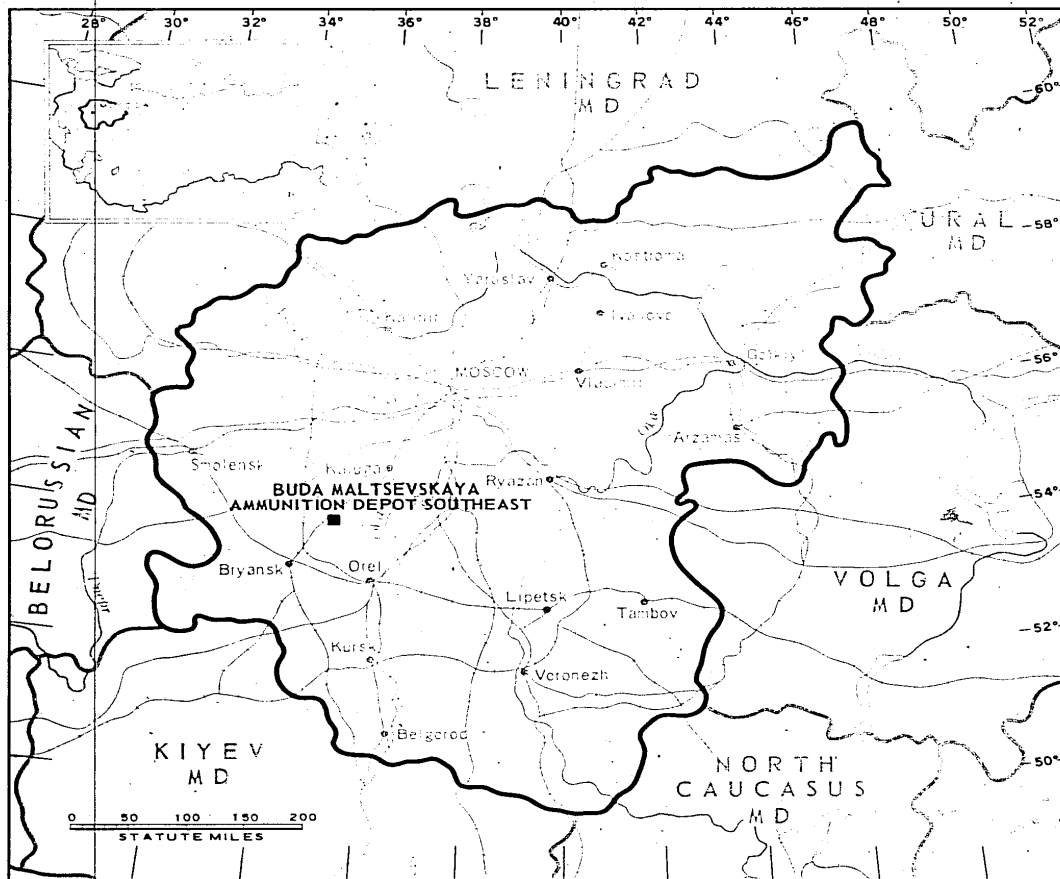


FIGURE 1. LOCATION OF BUDA MALTSEVSKAYA AMMUNITION DEPOT SOUTHEAST.

- 2 -

TOP SECRET RUFF

Handle Via
TALENT-KEYHOLE
Control System Only

TOP SECRET RUFF

Handle Via
TALENT-KEYHOLE
Control System Only

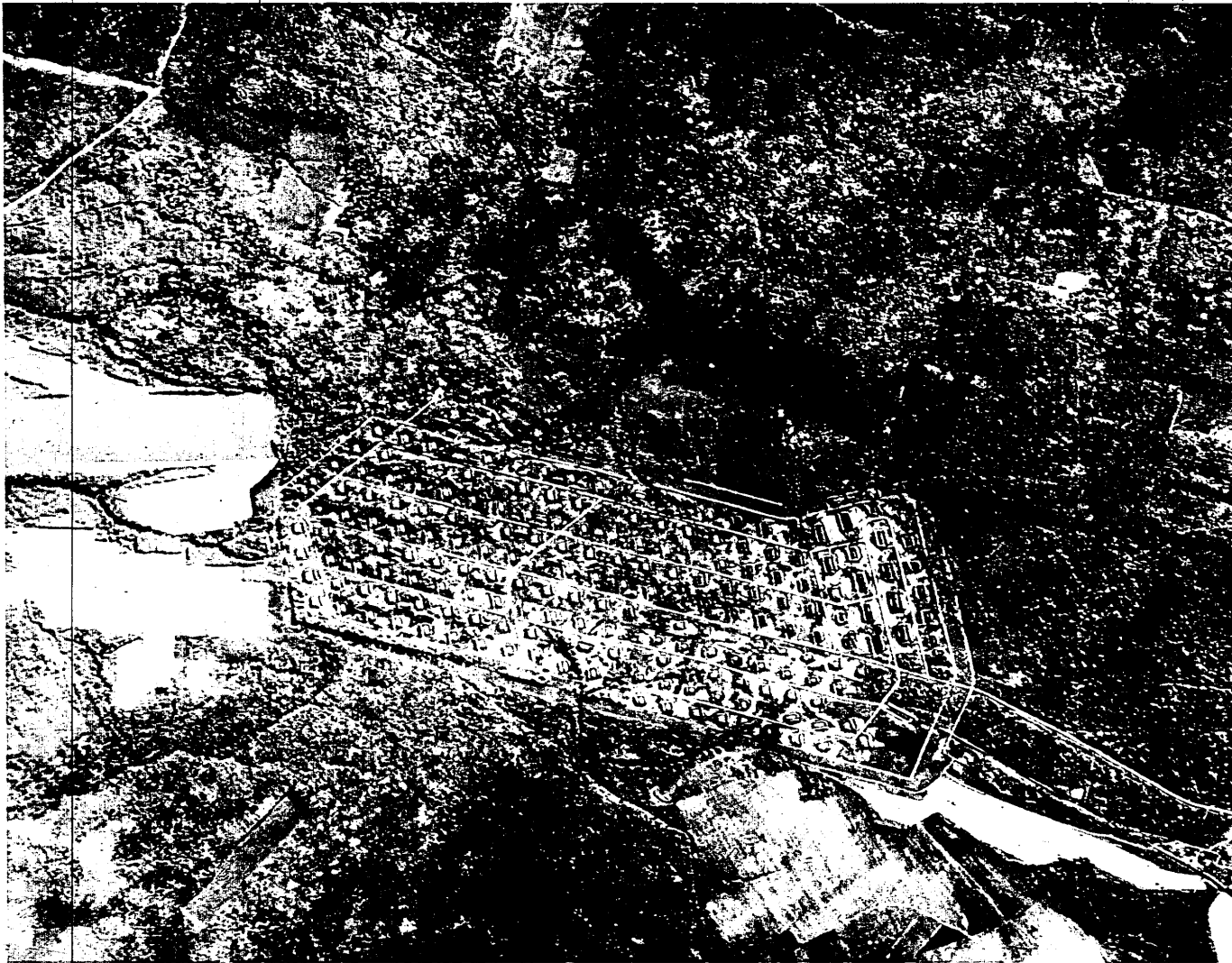


FIGURE 2. BUDA MAL'TSEVSKAYA AMMUNITION DEPOT SOUTHEAST, BUDA, USSR

- 3 -

25X1D

TOP SECRET RUFF

TOP SECRET RUFF

TCS-80732/65



FIGURE 2. BUDA MALTSEVSKAYA AMMUNITION DEPOT SOUTHEAST, BUDA, USSR, [REDACTED]

NPIC 641331 18/751

- 3 -

25X1D

TOP SECRET RUFF

Handle Via
TALENT-KEYHOLE
Control System Only

TOP SECRET RUFF

TCS-80732/65

SUMMARY

Buda Maltsevskaya Ammunition Depot Southeast is located 4 kilometers (km) southeast of Buda and 35 km southwest of Sukhinichi (Figure 1).

The ammunition depot and support area cover approximately 1,050 acres. The depot is double secured and contains 10 large, 148 medium, and 28 small revetted ammunition storage buildings and 4 support buildings. Three support buildings are located outside the security

fence. The support area contains 2 administration buildings, 4 barracks, 5 storage buildings, 31 support buildings, a water tower, and a small-arms firing range (Figures 2 and 3).

This area was covered on KEYHOLE missions between [REDACTED] and no significant change was observed. The installation appeared to be active and occupied on all coverage.

25X1D

25X1D

DESCRIPTION OF INSTALLATION

Railroad Service

A spur from Sukhinichi-Bryansk rail line serves the storage area.

Road Service

A secondary road provides access to Buda.

Administration and Troop Housing Area

Area D is 1 km west of storage area and contains 2 administration buildings, 4 barracks, 5 storage buildings, 31 support buildings, and a water tower.

Ammunition Storage Area

Area F contains 10 large, 148 medium, and 28 small revetted ammunition storage buildings and 7 support buildings. All of the ammunition storage buildings and 4 of the support buildings are within a double-secured area.

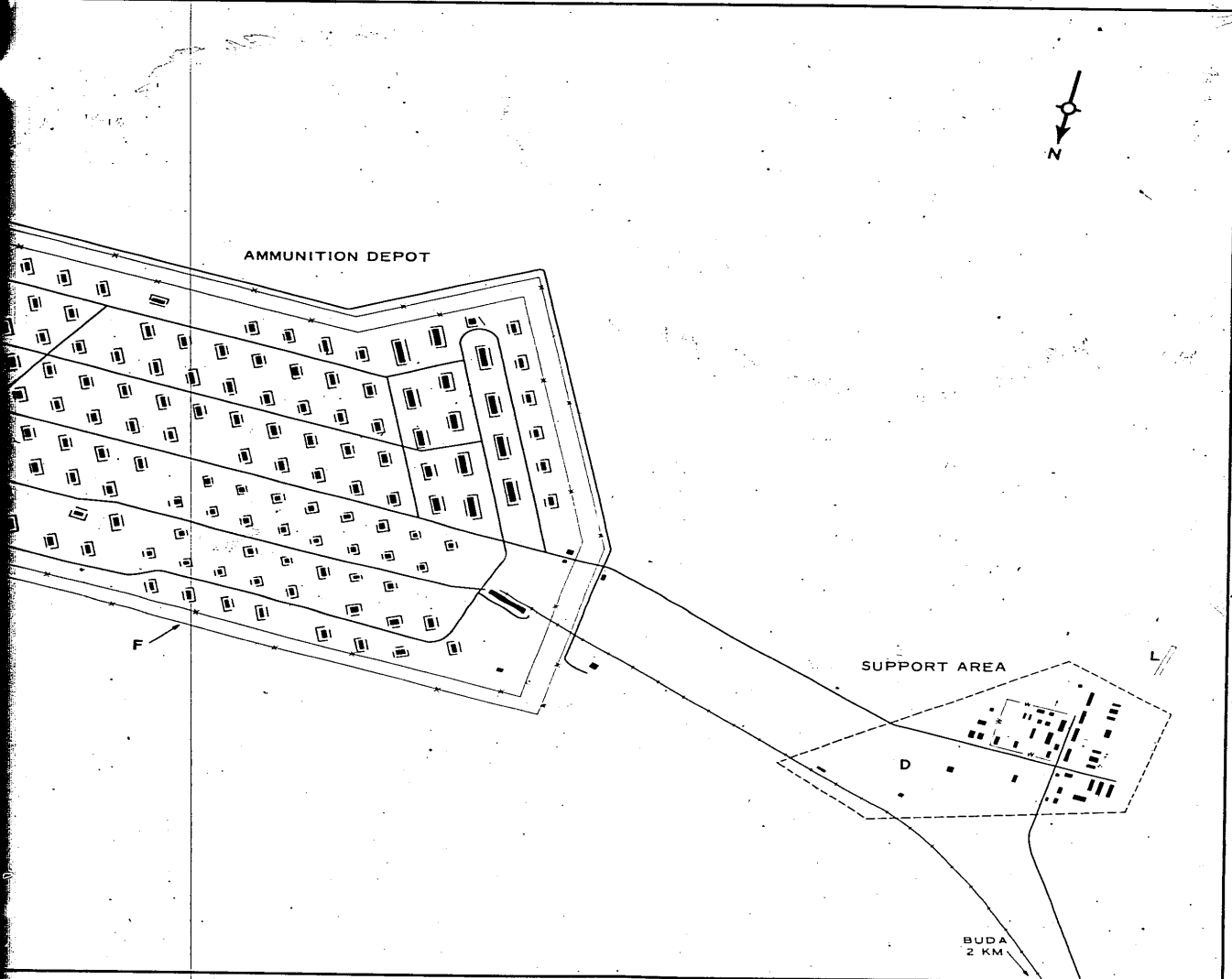
Small-Arms Firing Range

Area L is a small-arms firing range, 500 feet long and 50 feet wide.

TOP SECRET RUFF

TOP SECRET RUFF

TCS-80732/65



ALTSEVSKAYA AMMUNITION DEPOT SOUTHEAST. Sketch compiled from [REDACTED]

NPIC K-1932 (6/65)

- 5 -

25X1D

TOP SECRET RUFF

Handle Via
TALENT-KEYHOLE
Control System Only

TOP SECRET RUFF

Handle Via
TALENT-KEYHOLE
Control System Only

TCS-80732/65

25X1D

REFERENCES



MAPS OR CHARTS

US Air Target Chart, Series 200, Sheet 0167-13HL, 2d ed, Dec 63 (SECRET)

REQUIREMENT

C-RR4-81,733 (partial answer)

NPIC PROJECT

11709/64

TOP SECRET RUFF

Handle Via
TALENT-KEYHOLE
Control System Only