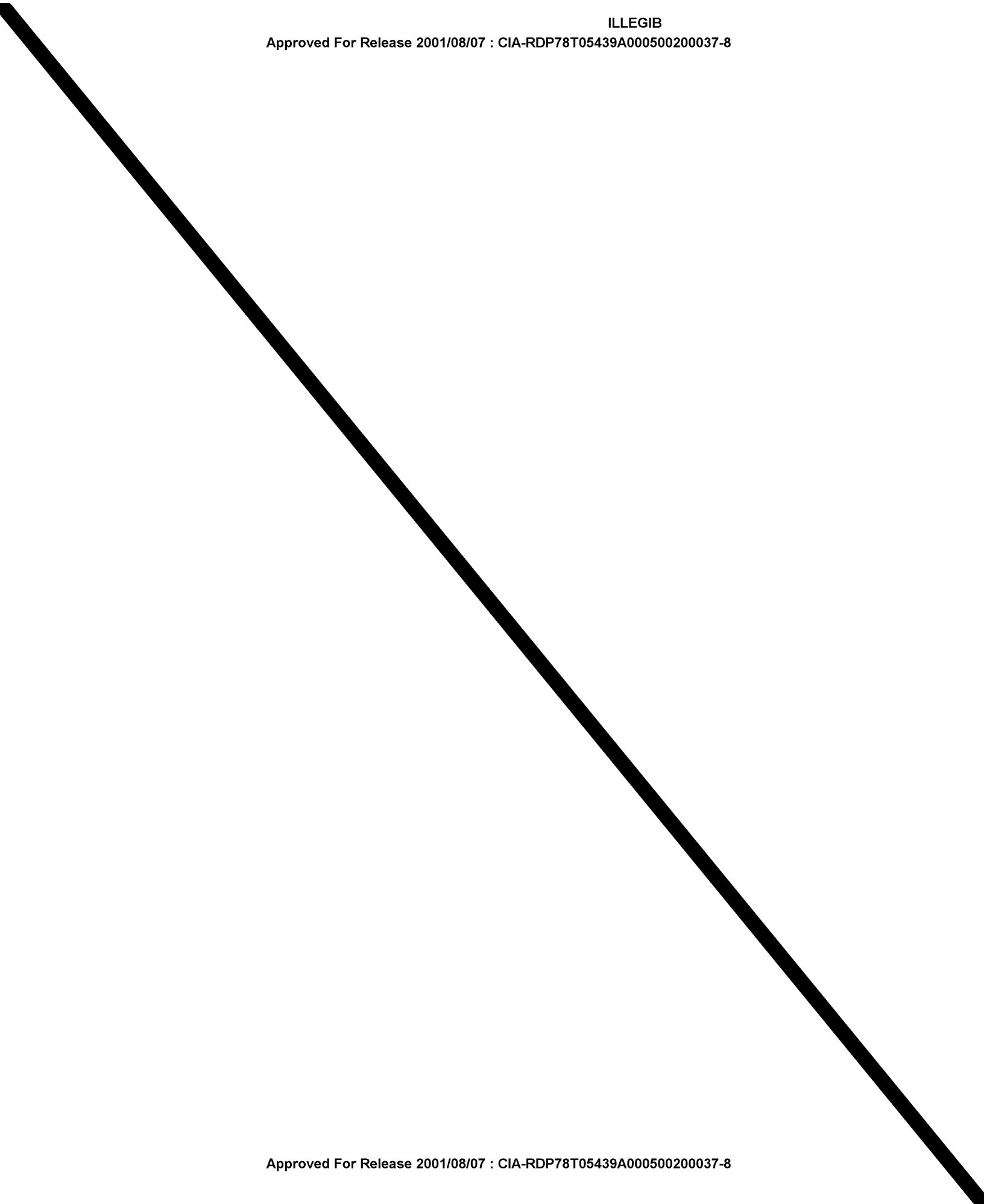


ILLEGIB

Approved For Release 2001/08/07 : CIA-RDP78T05439A000500200037-8



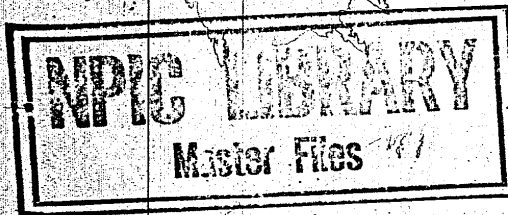
Approved For Release 2001/08/07 : CIA-RDP78T05439A000500200037-8

~~TOP SECRET~~

518436

PIIR

PHOTOGRAPHIC INTERPRETATION REPORT



SOVIET MILITARY ORDER OF BATTLE

MOSCOW MD

TCS-80811/65

JULY 1965

COPY 4

6 PAGES

Declass Review by NIMA/DOD

handle via **TALENT-KEYHOLE** control only

GROUP 1 EXCLUDED FROM AUTOMATIC DOWNGRADING AND DECLASSIFICATION

~~TOP SECRET~~

TOP SECRET RUFF

TCS-80811/65

PREFACE

This report is one in a series on Soviet Ground Force and Logistic installations being prepared for a DIA/CIA Panel. The series is being coordinated, published and disseminated by NPIC. The photographic analysis is being performed by the NPIC Photographic Analysis Group, the CIA Photographic Intelligence Division (NPIC), and the Production Center 1P1a (DIA). The photographic analysis for this particular report was performed by the NPIC Photographic Analysis Group.

In the interest of uniformity, the titles and letter designators for the facilities observed at these installations are identical with those appearing in the project requirement. When a specific facility is not observed both its title and letter designator are omitted in the report.

Titles and letter designators for the various facilities are as follows: (A) railroad service, (B) road service, (C) landing strips, (D) administrative and troop housing areas, (E) storage areas, (F) ammunition storage areas, (G) POL storage areas, (H) other buildings and facilities, (J) equipment storage/maintenance areas, (K) athletic fields, (L) small arms firing ranges, (M) driver training areas, (N) tank/assault gun firing ranges, (P) flat trajectory firing ranges, (Q) artillery emplacements (batteries), (R) infantry or combined arms field training area or courses, (S) special training facilities, (T) unidentified facilities or tracking activity.

TOP SECRET RUFF

TOP SECRET RUFF

Handle Via
TALENT-KEYHOLE
Control System Only

TCS-80811/65

PROBABLE EXPLOSIVES STORAGE AREA

(56-06N 038-45E)

KIRZHACH, VLADIMIRSKAYA OBLAST, USSR

MOSCOW MD

BE No:

AL No:



25X1C COMOR No:

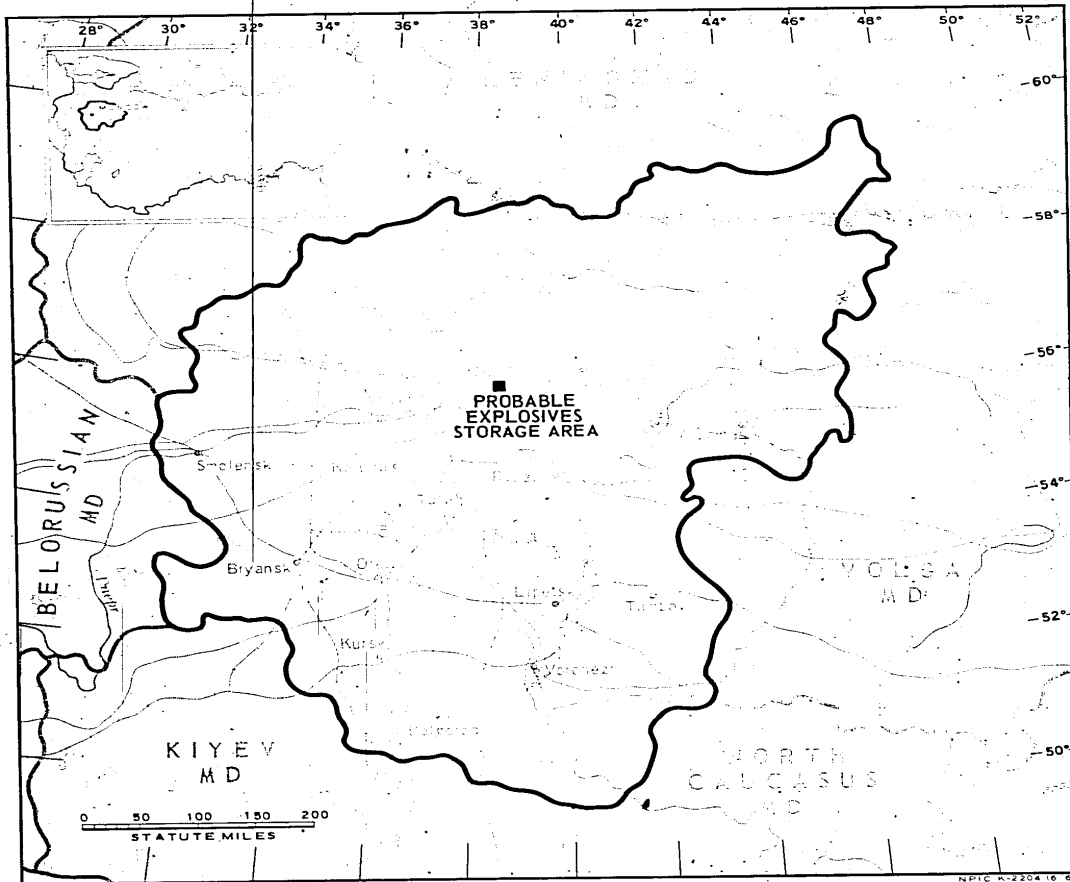


FIGURE 1. LOCATION OF PROBABLE EXPLOSIVES STORAGE AREA.

- 2 -

TOP SECRET RUFF

Handle Via
TALENT-KEYHOLE
Control System Only

TOP SECRET RUFF

Handle Via
TALENT-KEYHOLE
Control System Only

TCS-80811/65

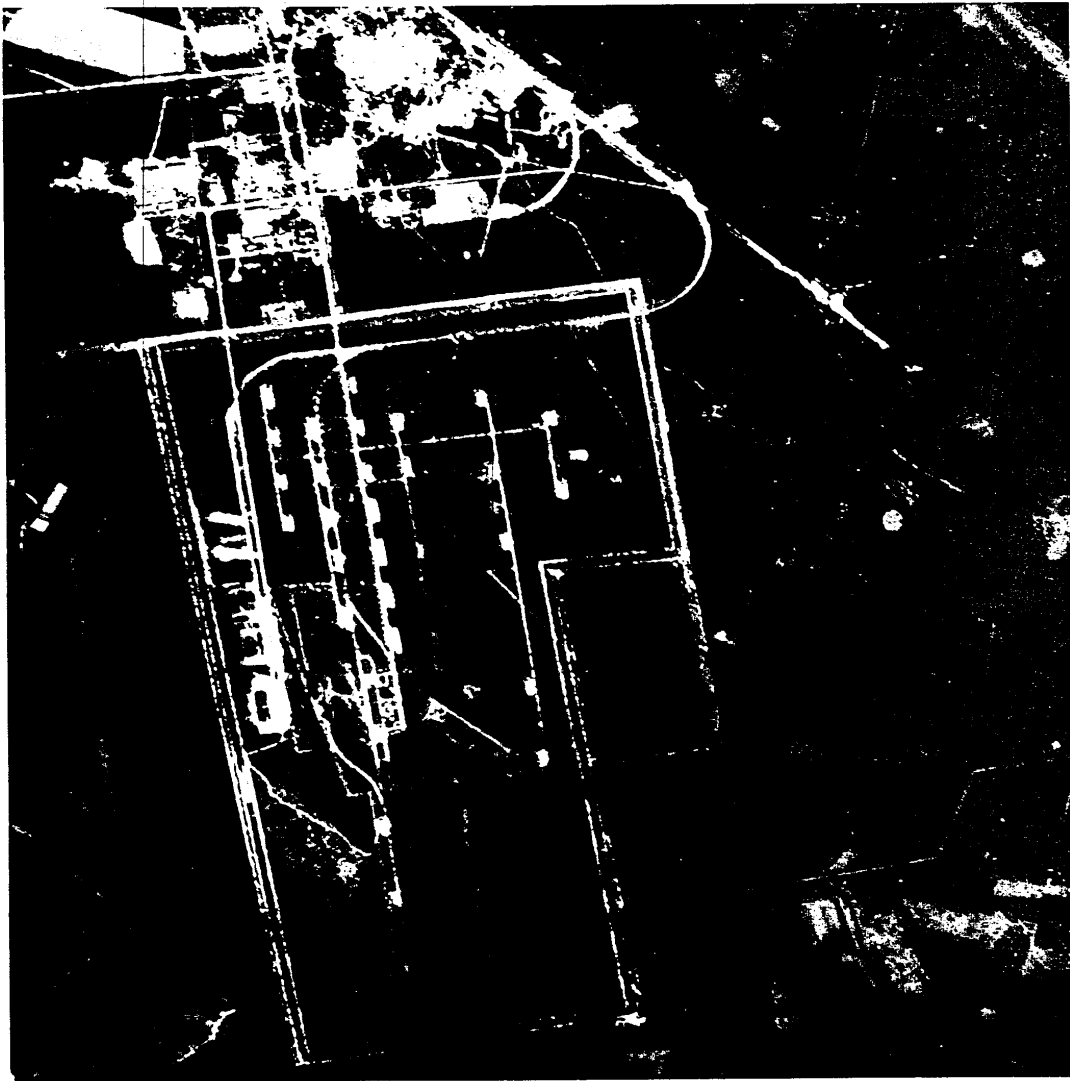


FIGURE 2. PROBABLE EXPLOSIVES STORAGE AREA, KIRZHACH, USSR, [REDACTED]

N.P.O. K-2225 16 651

- 3 -

25X1D

TOP SECRET RUFF

Handle Via
TALENT-KEYHOLE
Control System Only

TOP SECRET RUFF

Handle Via
TALENT-KEYHOLE
Control System Only

TCS-80811/65

SUMMARY

A probable explosives storage area is located 7 kilometers (km) southwest of Kirzhach (Figure 1).

The installation covers approximately 560 acres and contains an administration building, a possible barracks/administration building, 10 barracks, 24 quarters, 34 probable explosives storage buildings, 2 arch-roofed buildings, 1 vehicle shed, a vehicle maintenance building,

11 support buildings, an athletic field, and 2 clearings (Figures 2 and 3).

The installation was covered on KEYHOLE missions between [redacted]. Comparative analysis reveals that the 2 arch-roofed buildings were completed by [redacted] and the 2 clearings, possibly for future buildings, were first observed on late [redacted] coverage. A high level of activity was observed throughout this period.

25X1D

25X1D

25X1D

25X1D

25X1D

DESCRIPTION OF INSTALLATION

25X1D

Railroad Service

Three rail spurs serve the installation.

Road Service

All-weather roads provide access to Kirzhach.

Administration and Troop Housing Areas

Area D1 contains an administration building, a possible barracks/administration building, 10 multistory barracks, and 5 support buildings.

Area D2 contains 24 quarters.

Probable Explosives Storage Areas

Area F1 contains 34 probable explosives storage buildings and 3 support buildings.

Area F2 contains 2 arch-roofed buildings.

Poor quality coverage prior to [redacted] precluded earlier confirmation. Immediately east are 2 clearings, first observed on late [redacted] coverage, which may be sites for future buildings.

25X1D

Other Buildings

Area H contains 3 support buildings.

Equipment Storage/Maintenance Area

Area J contains a vehicle shed (300 by 35 feet) and a maintenance building (150 by 35 feet).

Athletic Field

Area K contains an athletic field.

Handle Via
TALENT-KEYHOLE
Control System Only

TOP SECRET RUFF

Handle Via
TALENT-KEYHOLE
Control System Only

TCS-80811/65

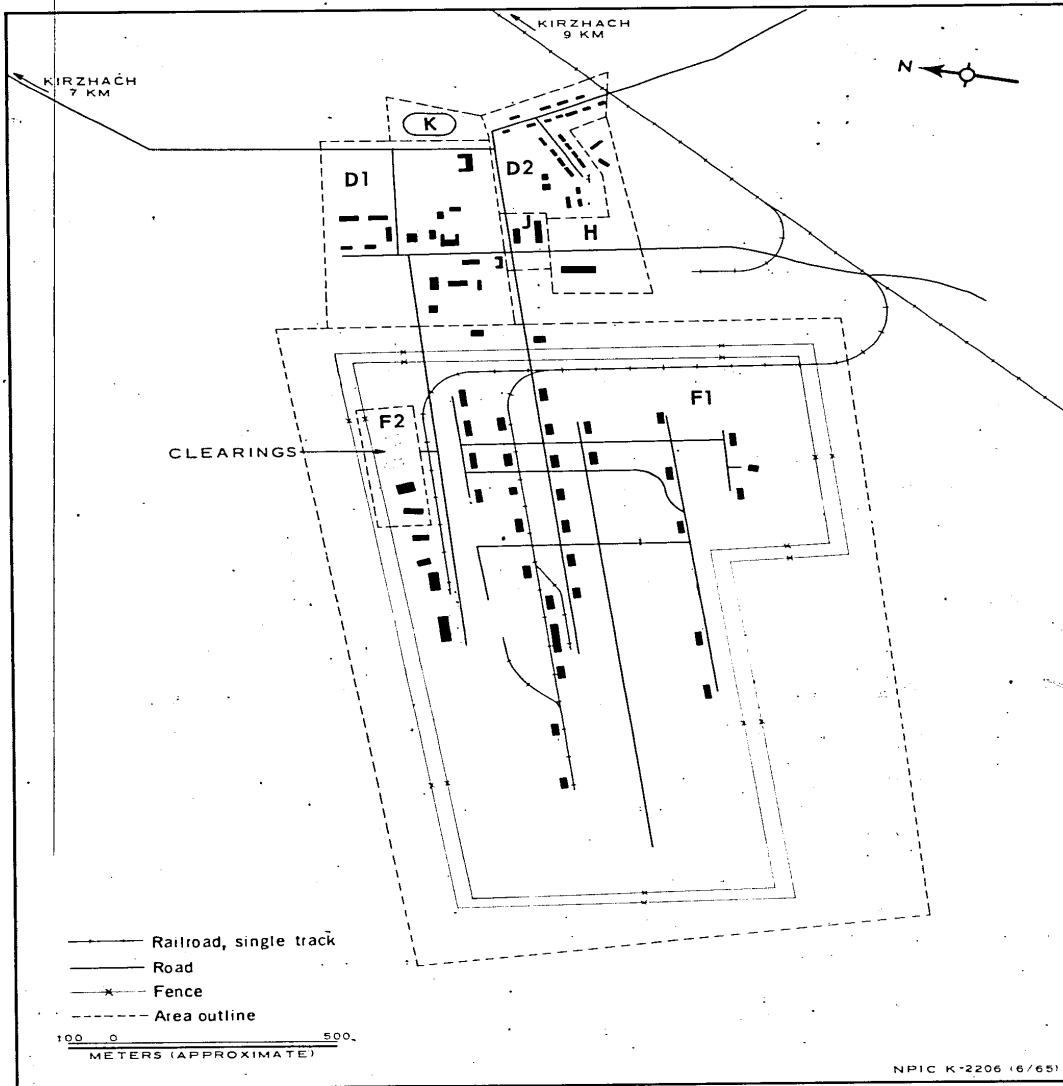


FIGURE 3. PROBABLE EXPLOSIVES STORAGE AREA. Sketch compiled from [REDACTED]

25X1D

Handle Via
TALENT-KEYHOLE
Control System Only

TOP SECRET RUFF

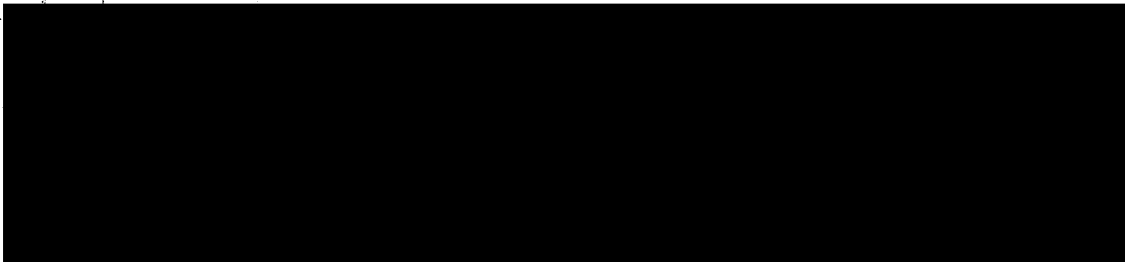
TOP SECRET RUFF

Handle Via
TALENT-KEYHOLE
Control System Only

TCS-80811/65

25X1D

REFERENCES



MAPS OR CHARTS

US Air Target Chart, Series 200, Sheet 0154-23HL, 2d ed, Apr 63 (SECRET)

REQUIREMENT

C-RR4-61,733 (partial answer)

NPIC PROJECT

11709/64

- 6 -

TOP SECRET RUFF

Handle Via
TALENT-KEYHOLE
Control System Only