

Approved For Release 2001/08/07 : CIA-RDP78T05439A000500200030-5

ILLEGIB

Approved For Release 2001/08/07 : CIA-RDP78T05439A000500200030-5

~~TOP SECRET~~

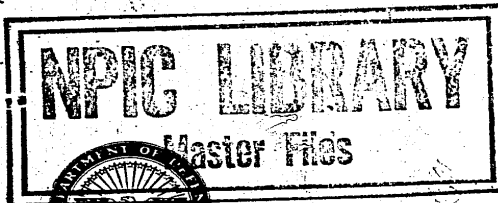
S-18429
TCS-80722/65
June 1965

Copy 4
6 Pages

Declass Review by NIMA/DOD

PHOTOGRAPHIC INTERPRETATION REPORT

SOVIET MILITARY ORDER OF BATTLE MOSCOW MD



CIA



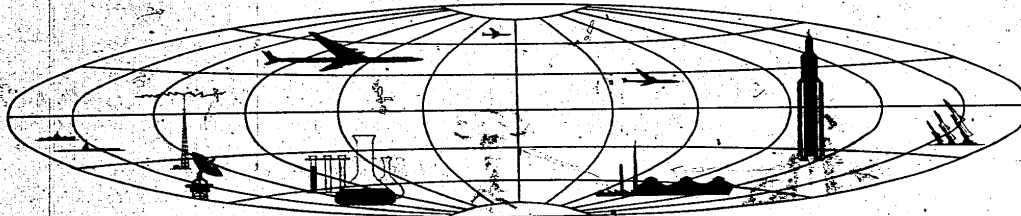
DIA

Handle Via **TALENT - KEYHOLE** Control Only

WARNING

This document contains classified information affecting the national security of the United States within the meaning of the espionage laws U. S. Code Title 18, Sections 793 and 794. The law prohibits its transmission or the revelation of its contents in any manner to an unauthorized person, as well as its use in any manner prejudicial to the safety or interest of the United States or for the benefit of any foreign government to the detriment of the United States. It is to be seen only by personnel especially indoctrinated and authorized to receive TALENT-KEYHOLE information. Its security must be maintained in accordance with KEYHOLE and TALENT regulations.

NATIONAL PHOTOGRAPHIC INTERPRETATION CENTER



~~TOP SECRET~~

GROUP 1
Excluded from automatic
downgrading and declassification

TOP SECRET RUFF

Handle Via
TALENT-KEYHOLE
Control System Only

TCS-80722/65

PREFACE

This report is one in a series on Soviet Ground Force and Logistic installations being prepared for a DIA/CIA Panel. The series is being coordinated, published and disseminated by NPIC. The photographic analysis is being performed by the NPIC Photographic Analysis Group, the CIA Photographic Intelligence Division (NPIC), and the Production Center 1P1a (DIA). The photographic analysis for this particular report was performed by the NPIC Photographic Analysis Group.

In the interest of uniformity, the titles and letter designators for the facilities observed at these installations are identical with those appearing in the project requirement. When a specific facility is not observed both its title and letter designator are omitted in the report.

Titles and letter designators for the various facilities are as follows: (A) railroad service, (B) road service, (C) landing strips, (D) administrative and troop housing areas, (E) storage areas, (F) ammunition storage areas, (G) POL storage areas, (H) other buildings and facilities, (J) equipment storage/maintenance areas, (K) athletic fields, (L) small arms firing ranges, (M) driver training areas, (N) tank/assault gun firing ranges, (P) flat trajectory firing ranges, (Q) artillery emplacements (batteries), (R) infantry or combined arms field training area or courses, (S) special training facilities, (T) unidentified facilities or tracking activity.

- 1 -

Handle Via
TALENT-KEYHOLE
Control System Only

TOP SECRET RUFF

TOP SECRET RUFF

Handle Via
TALENT-KEYHOLE
Control System Only

TCS-80722/65

DOBRYATINO AMMUNITION DEPOT RAILROAD STATION

(55-30N 041-19E)

DOBRYATINO, VLADIMIRSKAYA OBLAST, USSR

MOSCOW MD
25X1C

25X1A

AL No: [REDACTED]

COMOR No: [REDACTED]

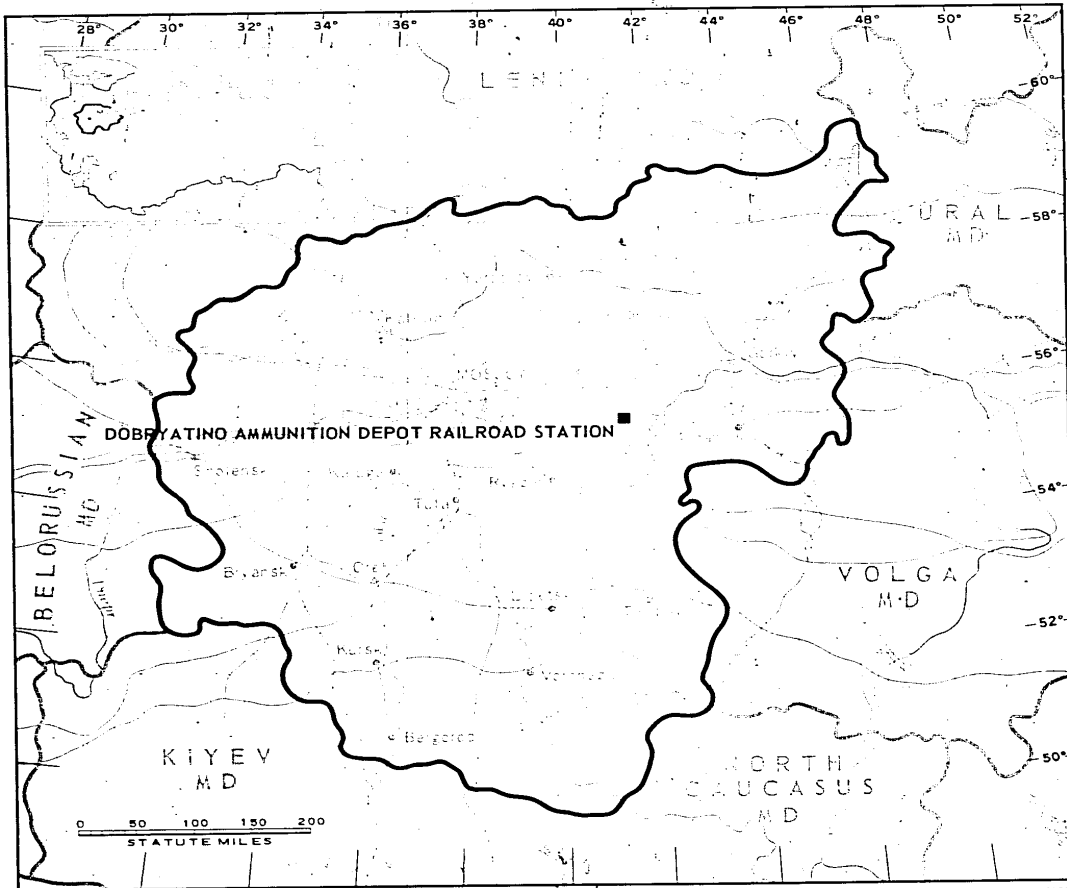


FIGURE 1. LOCATION OF DOBRYATINO AMMUNITION DEPOT RAILROAD STATION.

- 2 -

Handle Via
TALENT-KEYHOLE
Control System Only

TOP SECRET RUFF

TOP SECRET RUFF

Handle Via
TALENT-KEYHOLE
Control System Only

TCS-80722/65

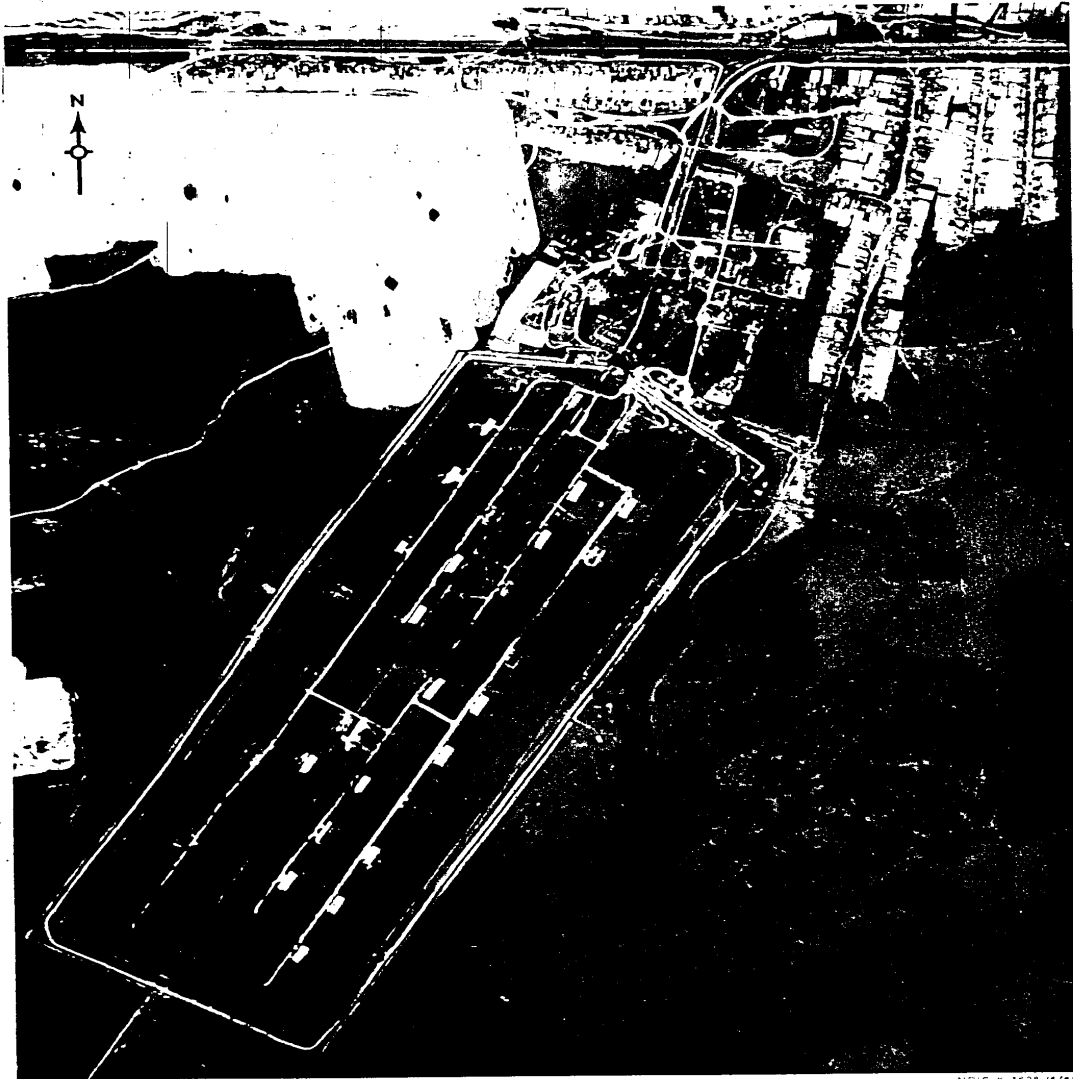


FIGURE 2. DOBRYATINO AMMUNITION DEPOT RAILROAD STATION, DOBRYATINO, USSR

25X1D

- 3 -

Handle Via
TALENT-KEYHOLE
Control System Only

TOP SECRET RUFF

TOP SECRET RUFF

Handle Via
TALENT-KEYHOLE
Control System Only

TCS-80722/65

SUMMARY

Dobryatino Ammunition Depot Railroad Station is located on the south edge of Dobryatino (Figure 1).

The installation covers approximately 250 acres and contains 2 administration buildings, 21 support/quarters, 30 ammunition storage

buildings, and 7 support buildings (Figures 2 and 3).

The area is covered on KEYHOLE missions between [REDACTED]

[REDACTED] There has been no discernible change in the installation and a light level of activity is observed on all coverage.

25X1D

25X1D

DESCRIPTION OF INSTALLATION

Railroad Service

The depot is served by a spur from the Moscow-Murom rail line and has 1 trackside dock of undetermined length.

Road Service

The installation is served by the primary road network of Dobryatino.

Administrative and Troop Housing Area

Area D contains 2 administration buildings and 21 support buildings/quarters.

Ammunition Storage Area

Area F is double-fenced and contains 30 ammunition storage buildings and 7 support buildings.

TOP SECRET RUFF

Handle Via
TALENT-KEYHOLE
Control System Only

TCS-80722/65

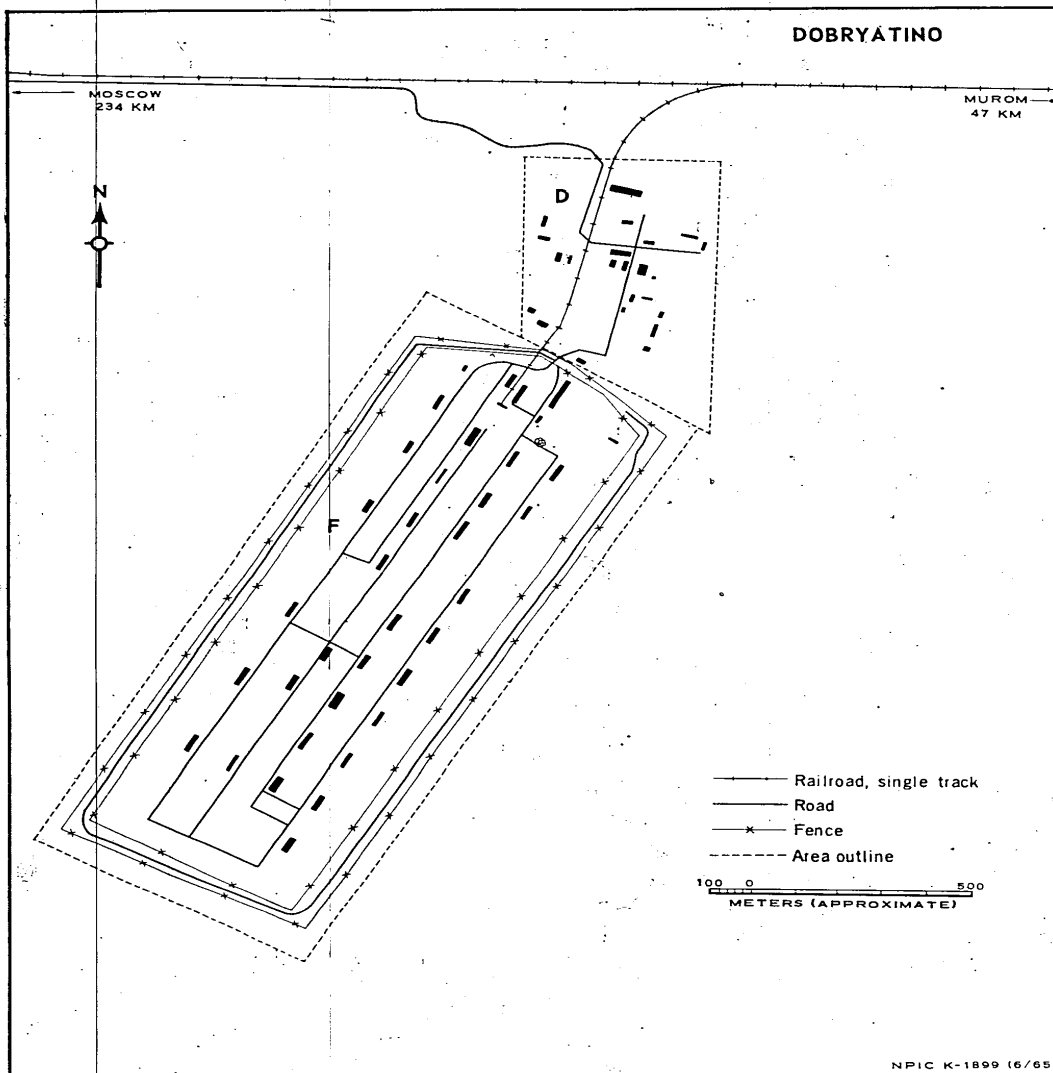


FIGURE 3. DOBRYATINO AMMUNITION DEPOT RAILROAD STATION. Sketch compiled from [REDACTED]

25X1D

25X1D

TOP SECRET RUFF

Handle Via
TALENT-KEYHOLE
Control System Only

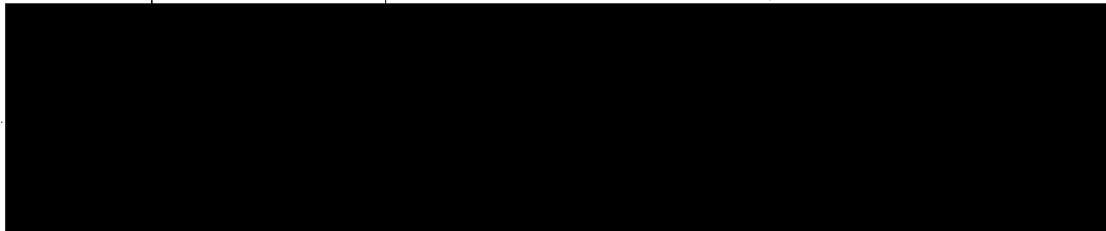
Handle Via
TALENT-KEYHOLE
Control System Only

TOP SECRET RUFF

TCS-80722/65

25X1D

REFERENCES



MAPS OR CHARTS

US Air Target Chart, Series 200, Sheet 0166-2HL, 3d ed, Feb 63 (SECRET)

REQUIREMENTS

C-RR4-51,733 (partial answer)

NPIC PROJECT

11709/64

- 6 -

TOP SECRET RUFF

Handle Via
TALENT-KEYHOLE
Control System Only