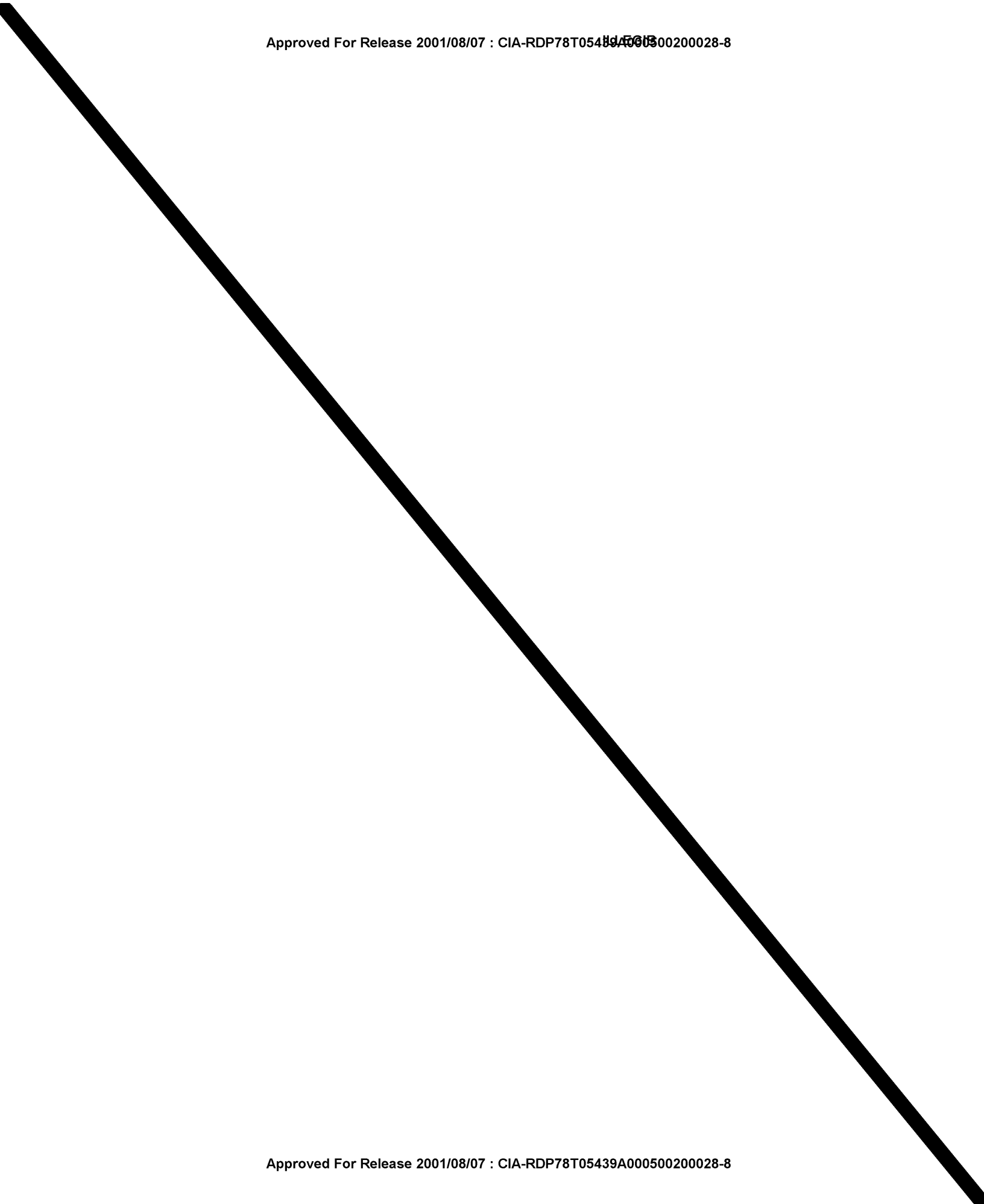


Approved For Release 2001/08/07 : CIA-RDP78T05439A000500200028-8



Approved For Release 2001/08/07 : CIA-RDP78T05439A000500200028-8

S-18427

~~TOP SECRET~~

P I R

PHOTOGRAPHIC INTERPRETATION REPORT

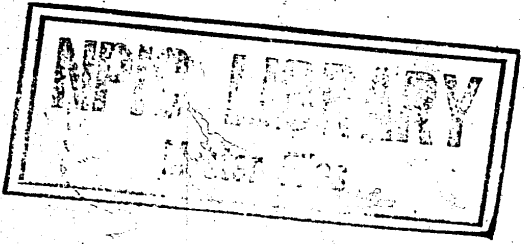
PANELED JUL 20 1965



Declass Review by NIMA/DOD

SOVIET MILITARY ORDER OF BATTLE

VOLGA MD

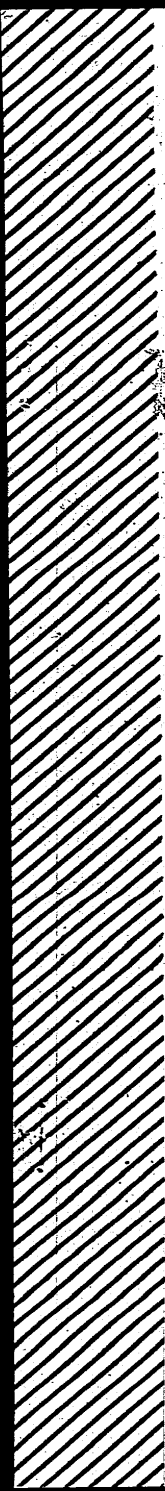


TCS-80727/65
JULY 1965
COPY
6 PAGES

handle via **TALENT-KEYHOLE** control only

GROUP 1 EXCLUDED FROM AUTOMATIC DOWNGRADING AND DECLASSIFICATION

~~TOP SECRET~~



TOP SECRET CHESS RUFF

Handle Via
TALENT-KEYHOLE
Control System Only

TCS-80727 65

PREFACE

This report is one in a series on Soviet Ground Force and Logistic installations being prepared for a DIA/CIA Panel. The series is being coordinated, published and disseminated by NPIC. The photographic analysis is being performed by the NPIC Photographic Analysis Group, the CIA Photographic Intelligence Division (NPIC), and the Production Center 1P1a (DIA). The photographic analysis for this particular report was performed by the Production Center 1P1a.

In the interest of uniformity, the titles and letter designators for the facilities observed at these installations are identical with those appearing in the project requirement. When a specific facility is not observed both its title and letter designator are omitted in the report.

Titles and letter designators for the various facilities are as follows: (A) railroad service, (B) road service, (C) landing strips, (D) administrative and troop housing areas, (E) storage areas, (F) ammunition storage areas, (G) POL storage areas, (H) other buildings and facilities, (J) equipment storage/maintenance areas, (K) athletic fields, (L) small arms firing ranges, (M) driver training areas, (N) tank/assault gun firing ranges, (P) flat trajectory firing ranges, (Q) artillery emplacements (batteries), (R) infantry or combined arms field training areas or courses, (S) special training facilities, (T) unidentified facilities or tracking activity.

- 1 -

Handle Via
TALENT-KEYHOLE
Control System Only

TOP SECRET CHESS RUFF

TOP SECRET CHESS RUFF

Handle Via
TALENT-KEYHOLE
Control System Only

TCS-80727/65

POSSIBLE ARMAMENT PROVING/TESTING RANGE
CHAPAYEVSK, KUYBYSHEVSKAYA OBLAST, USSR
VOLGA MD

25X1C

BE No:

AL No:



COMOR No:

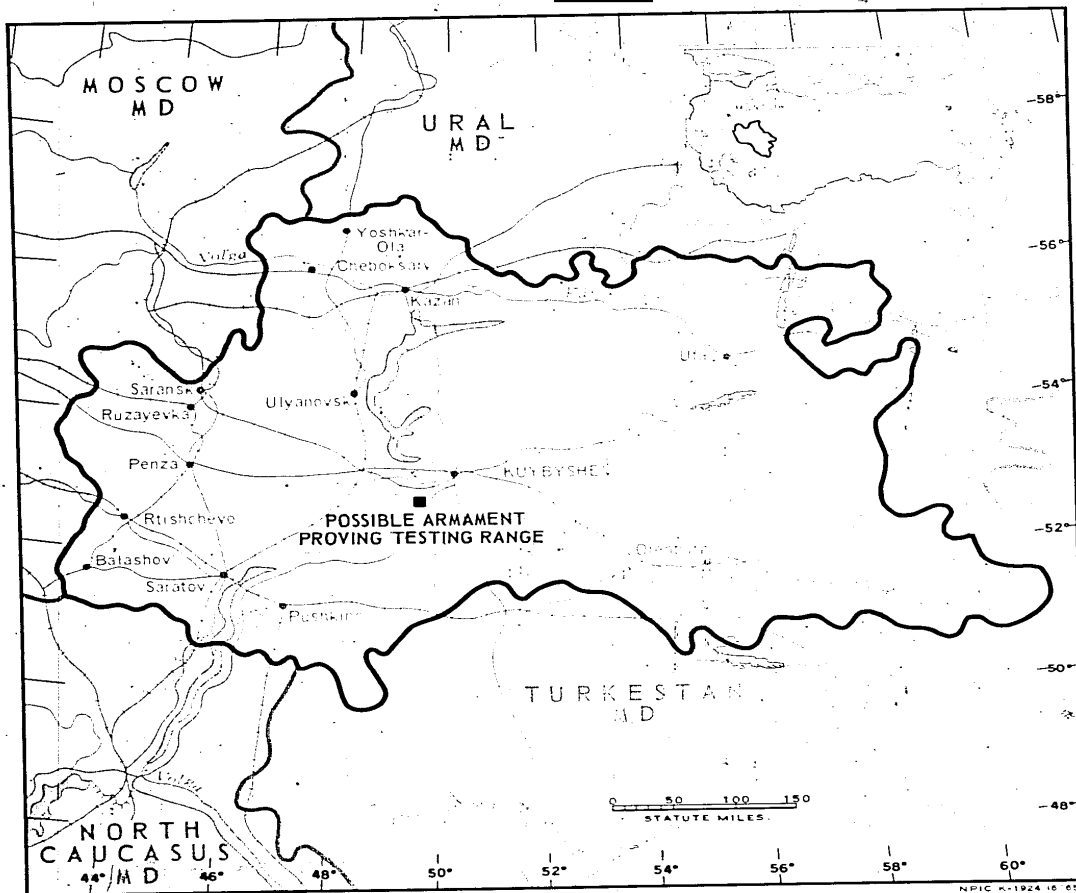


FIGURE 1. LOCATION OF POSSIBLE ARMAMENT PROVING TESTING RANGE.

Handle Via
TALENT-KEYHOLE
Control System Only

TOP SECRET CHESS RUFF

Handle Via
TALENT-KEYHOLE
Control System Only

TCS-80727/65

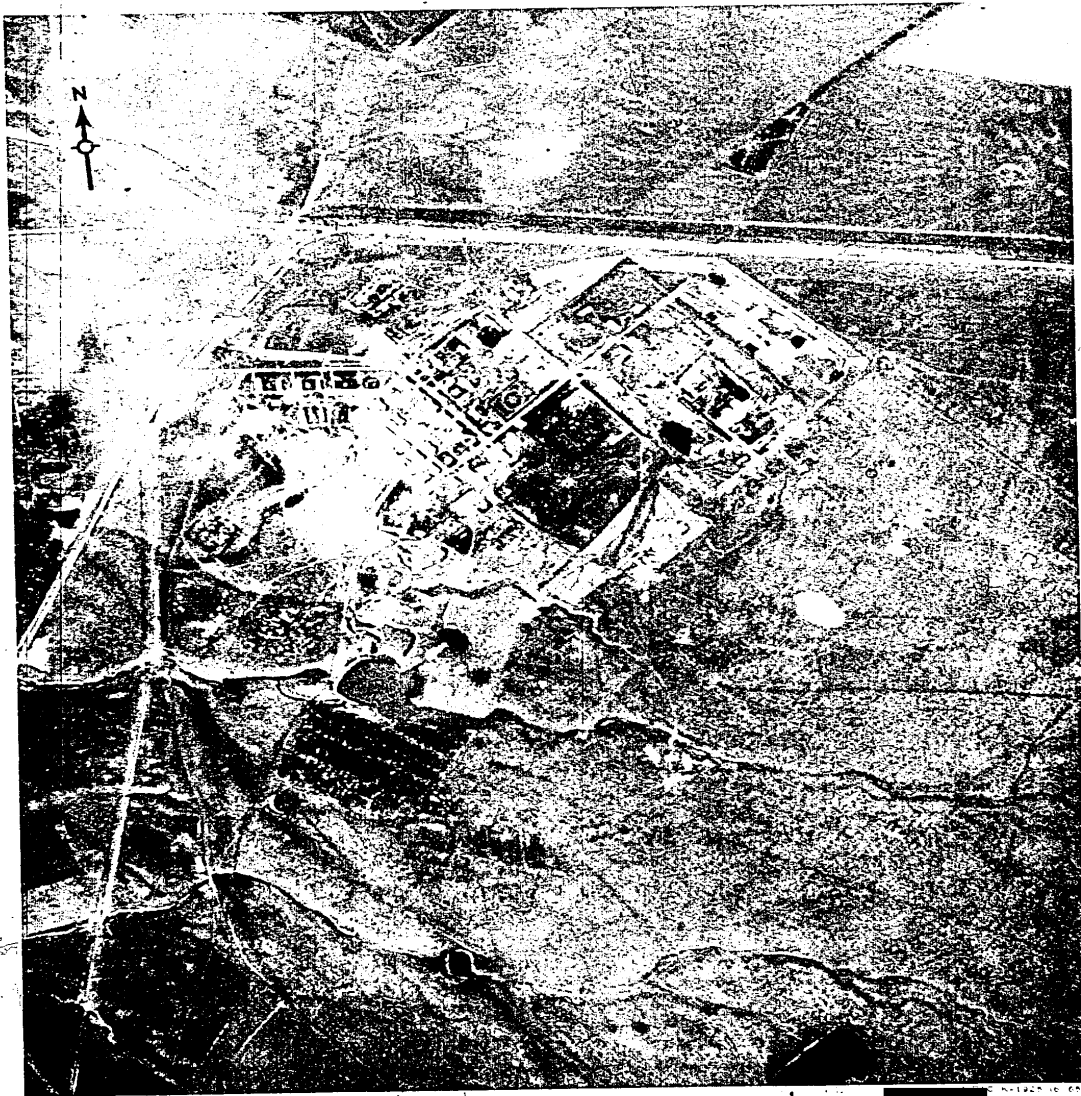


FIGURE 2. POSSIBLE ARMAMENT PROVING TESTING RANGE, CHAPAYEVSK, USSR.

25X1D

- 3 -

Handle Via
TALENT-KEYHOLE
Control System Only

TOP SECRET CHESS RUFF

TOP SECRET CHESS RUFF

Handle Via
TALENT-KEYHOLE
Control System Only

TCS-80727/65

SUMMARY

25X1A A possible danger/impact area and an
25X1A adjacent support area are located east of
Chapayevsk, close to the Chapayevsk Explosives
and Munitions Combine 309 and 15 [REDACTED]

[REDACTED] Combination of the 2 facilities, which
cover approximately 60 sq kilometers (km),
forms a possible armament proving/testing
range (Figure 1).

The support area at 52-59N 049-47E covers
approximately 370 acres, is secured, and con-
tains 18 barracks, 4 administration buildings,
6 revetted explosives storehouses, and 58 other
structures.

The danger/impact area is approximately
15 km long and 4 km wide. The track runs

northwest to southeast with center coordinates
at 52-56N 049-50E. The southeast end appears
to be an impact area, while firing seems to take
place immediately south of the support area.
This danger/impact area also contains a secured
possible test facility near the center. The
test facility contains 3 buildings, 2 possible
bunkers and a possible observation area (Figures
2 and 3).

[REDACTED] KEYHOLE missions covered this
target between [REDACTED] 25X1D
During this time, 3 barracks, 3 revetted ware-
houses, and approximately 24 other buildings
were added to the support area.

DESCRIPTION OF INSTALLATION

Railroad Service

Rail service is available in Chapayevsk,
4 km northwest.

Road Service

Good secondary roads serve the areas.

Administrative and Troop Housing Area

Area D contains 18 multistory barracks,
4 multistory administration buildings, 12 support
buildings, 2 storage buildings, 5 unidentified
buildings (1 with conveyor).

General Storage Areas

Areas E1-4 are secured open storage areas
(E2 is not secured).

Area E5 contains 9 storage buildings, 2
support buildings and open storage.

Ammunition Storage Area

Area F contains 6 revetted storage build-
ings.

POL Storage Area

Area G contains 2 support/storage build-
ings, and probable drum storage.

Other Buildings

Area H1 contains a possible explosives
handling area with 23 unidentified buildings.

Area H2 contains 1 water tower and 3
unidentified buildings.

Special Training Facilities

Area S is a possible armament proving
range with a cleared danger/impact area and
a possible test area. The impact area is
approximately 15 km long and 4 km wide. There
appear to be impact holes in the southeast
corner. The possible test area contains 3
unidentified buildings, 2 possible bunkered build-
ings, and a possible blast-shielded observation
area.

Handle Via
TALENT-KEYHOLE
Control System Only

TOP SECRET CHESS RUFF

Handle Via
TALENT-KEYHOLE
Control System Only

TCS-807 27/65

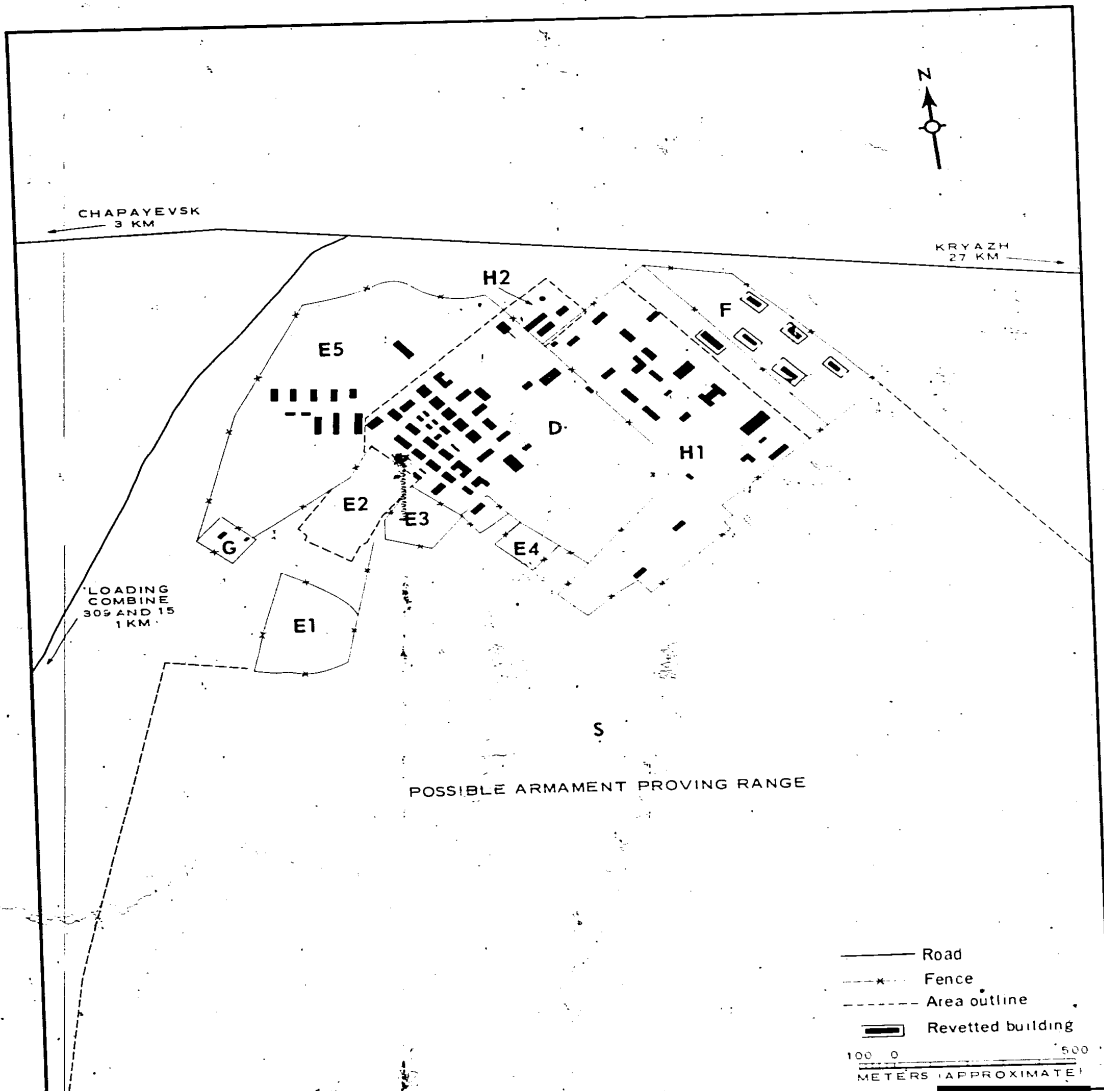


FIGURE 3. POSSIBLE ARMAMENT PROVING TESTING RANGE. Sketch compiled from [redacted]

25X1D

- 5 -

25X1D

Handle Via
TALENT-KEYHOLE
Control System Only

TOP SECRET CHESS RUFF

Handle Via
TALENT-KEYHOLE
Control System Only

TOP SECRET CHESS RUFF

TCS-80727/65

25X1D

REFERENCES



MAPS OR CHARTS

US Air Target Chart, Series 200, Sheet 0165-16HL, 3d ed, Jan 63 (SECRET)

25X1C

REQUIREMENTS

DIAAP-1-15-64 (partial answer)

NPIC PROJECT

11906 64

Handle Via
TALENT-KEYHOLE
Control System Only