

ILLEGIB

~~TOP SECRET~~

S-18404

TCS-80731/65  
June 1965

Copy  
6 Pages

PHOTOGRAPHIC INTERPRETATION REPORT

PANELED

JUL 12 1965

# SOVIET MILITARY ORDER OF BATTLE MOSCOW MD

Declass Review by NIMA/DOD



CIA



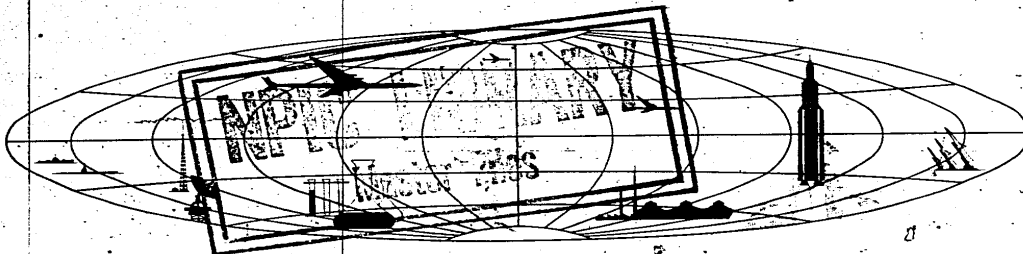
DIA

Handle Via **TALENT - KEYHOLE** Control. Only

WARNING

This document contains classified information affecting the national security of the United States within the meaning of the espionage laws U. S. Code Title 18, Sections 793 and 794. The law prohibits its transmission or the revelation of its contents in any manner to an unauthorized person, as well as its use in any manner prejudicial to the safety or interest of the United States or for the benefit of any foreign government to the detriment of the United States. It is to be seen only by personnel especially indoctrinated and authorized to receive TALENT-KEYHOLE information. Its security must be maintained in accordance with KEYHOLE and TALENT regulations.

NATIONAL PHOTOGRAPHIC INTERPRETATION CENTER



~~TOP SECRET~~

GROUP 1  
Excluded from automatic  
downgrading and declassification

Handle Via  
TALENT-KEYHOLE  
Control System Only

TOP SECRET RUFF

TCS-80731/65

PREFACE

This report is one in a series on Soviet Ground Force and Logistic installations being prepared for a DIA/CIA Panel. The series is being coordinated, published and disseminated by NPIC. The photographic analysis is being performed by the NPIC Photographic Analysis Group, the CIA Photographic Intelligence Division (NPIC), and the Production Center 1P1a (DIA). The photographic analysis for this particular report was performed by the NPIC Photographic Analysis Group.

In the interest of uniformity, the titles and letter designators for the facilities observed at these installations are identical with those appearing in the project requirement. When a specific facility is not observed both its title and letter designator are omitted in the report.

Titles and letter designators for the various facilities are as follows: (A) railroad service, (B) road service, (C) landing strips, (D) administrative and troop housing areas, (E) storage areas, (F) ammunition storage areas, (G) POL storage areas, (H) other buildings and facilities, (J) equipment storage/maintenance areas, (K) athletic fields, (L) small arms firing ranges, (M) driver training areas, (N) tank/assault gun firing ranges, (P) flat trajectory firing ranges, (Q) artillery emplacements (batteries), (R) infantry or combined arms field training area or courses, (S) special training facilities, (T) unidentified facilities or tracking activity.

- 1 -

TOP SECRET RUFF

Handle Via  
TALENT-KEYHOLE  
Control System Only

TOP SECRET RUFF

Handle Via  
TALENT-KEYHOLE  
Control System Only

TCS-80731/65

PROBABLE EXPLOSIVES STORAGE AREA  
(57-58N 038-24E)  
VOLGA, YAROSLAVSKAYA OBLAST, USSR  
MOSCOW MD

BE No:

AL No: [REDACTED]

25X1C COMOR No:

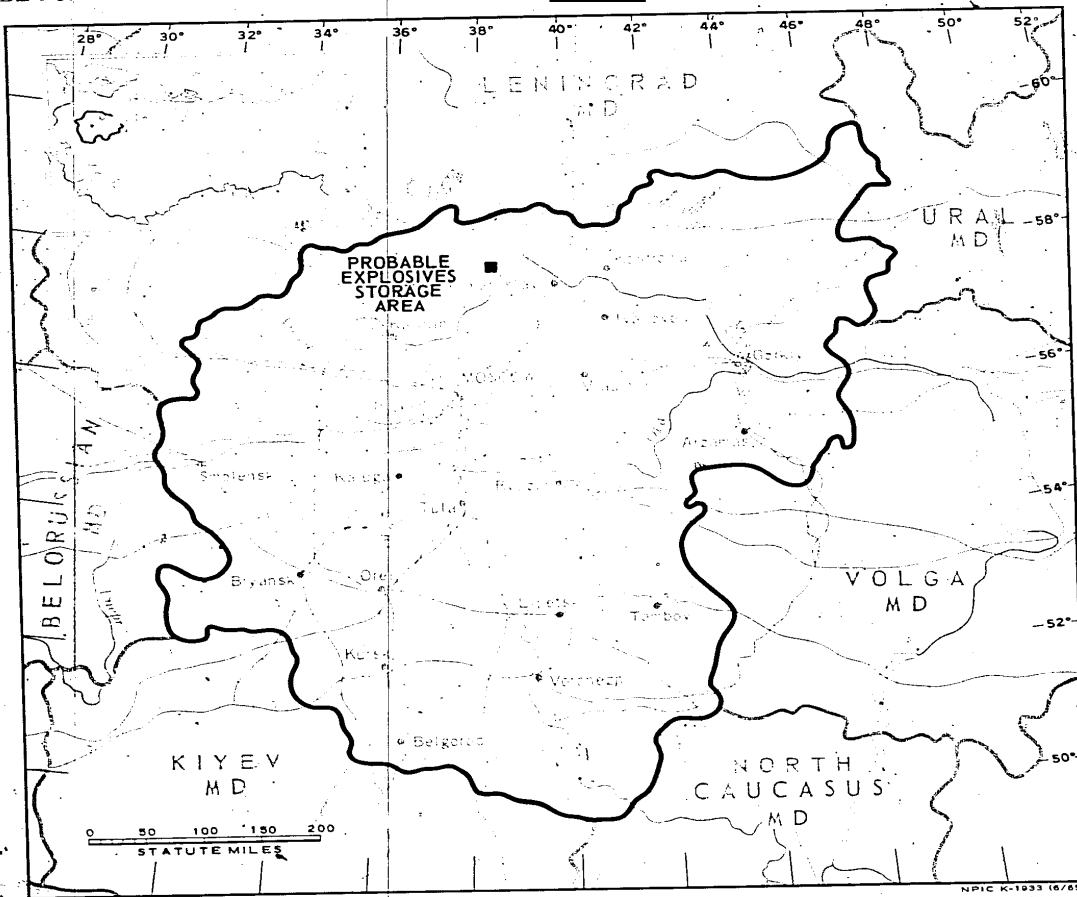


FIGURE 1. LOCATION OF PROBABLE EXPLOSIVES STORAGE AREA.

Handle Via  
TALENT-KEYHOLE  
Control System Only

TOP SECRET RUFF

TOP SECRET RUFF

Handle Via  
TALENT-KEYHOLE  
Control System Only

TCS-80731/65

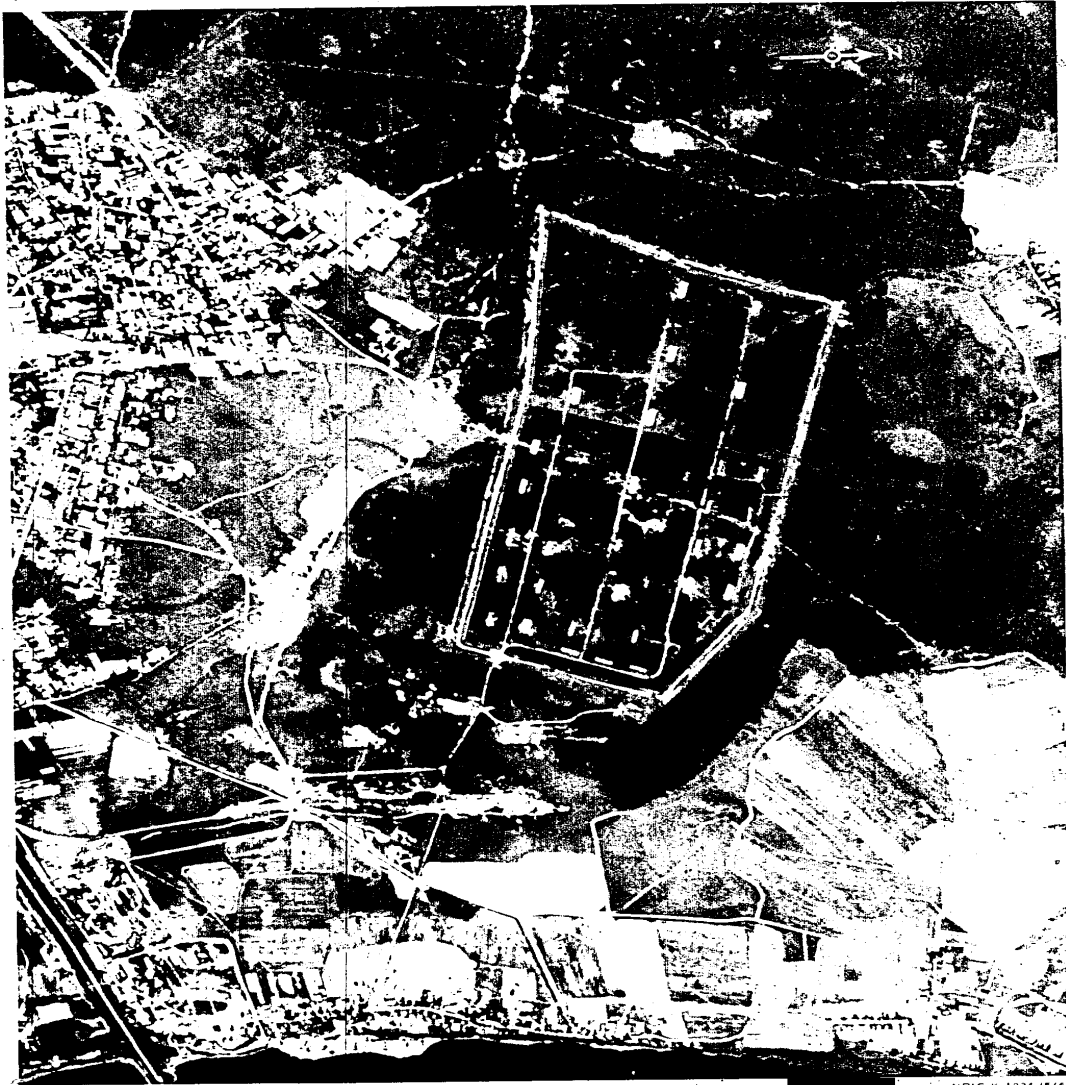


FIGURE 2. PROBABLE EXPLOSIVES STORAGE AREA, VOLGA, USSR.

NPIC R-1934 (2/7/65)

25X1D

- 3 -

TOP SECRET RUFF

Handle Via  
TALENT-KEYHOLE  
Control System Only

TOP SECRET RUFF

Handle Via  
TALENT-KEYHOLE  
Control System Only

TCS-80731/65

SUMMARY

A probable explosives storage area is located 2 kilometers (km) north of Volga (Figure 1).

The installation covers approximately 340 acres and contains 2 possible administration buildings, a multistory barracks, 31 probable explosives storage buildings, 10 storage buildings, 9 support buildings, and a small-arms

firing range (Figures 2 and 3).

This installation is covered on KEYHOLE missions between [REDACTED]

[REDACTED] Comparative analysis reveals no changes in facilities and a high level of activity throughout this period.

25X1D

25X1D

DESCRIPTION OF INSTALLATION

Railroad Service

A spur from the Volga-Rybinsk rail line serves the installation.

Road Service

All-weather roads provide access to Volga.

Administration and Troop Housing Area

Area D contains 2 possible administration buildings and a multistory barracks.

General Storage Area

Area E contains 10 storage buildings and 7 support buildings.

Probable Explosives Storage Area

Area F contains 31 probable explosives storage buildings and a support building. The area is doubly secured and surrounded by a firebreak.

Small-Arms Firing Range

Area L contains a small-arms firing range, 650 by 60 feet, and a support building.

TOP SECRET RUFF

Handle Via  
TALENT-KEYHOLE  
Control System Only

TOP SECRET RUFF

Handle Via  
TALENT-KEYHOLE  
Control System Only

TCS-80731/65

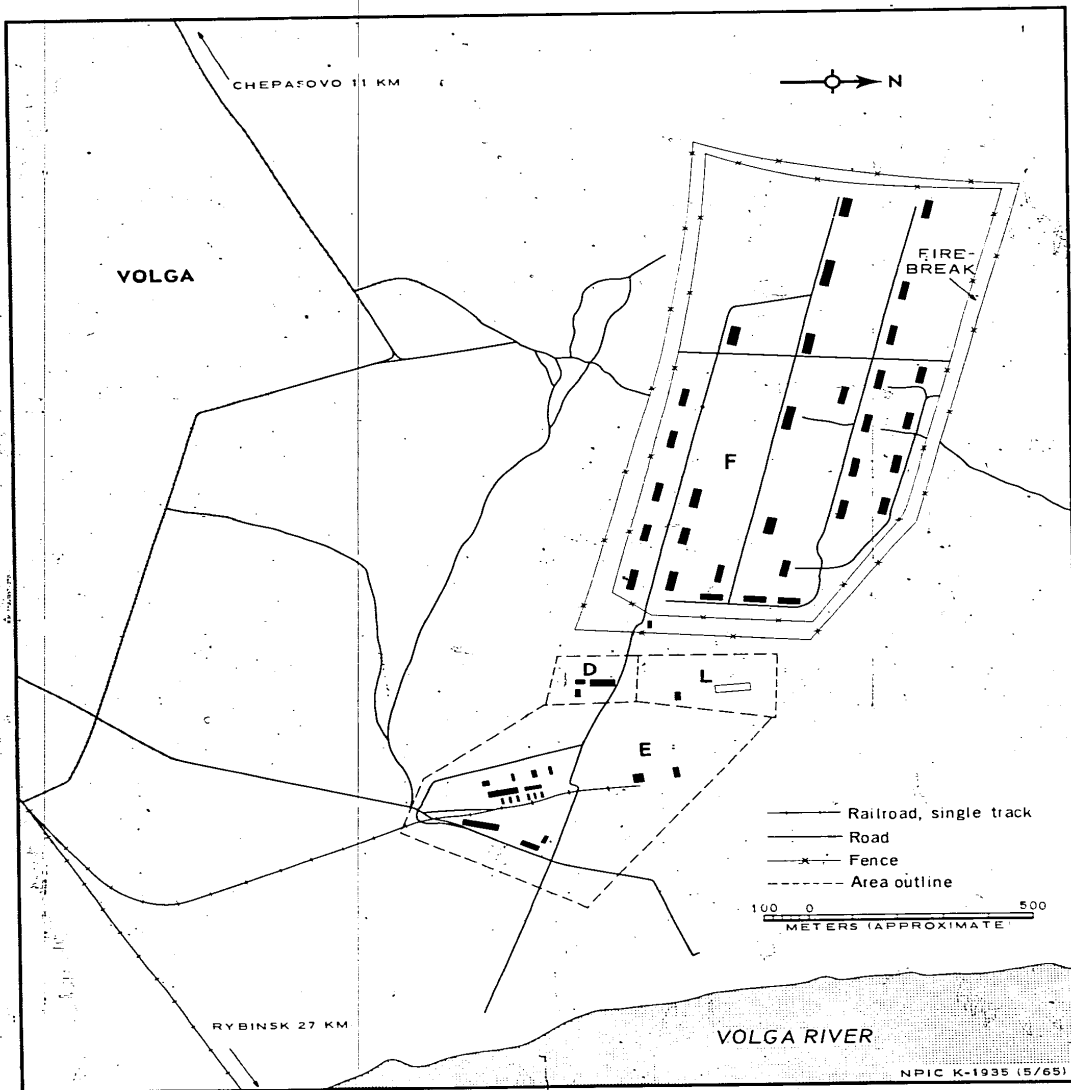


FIGURE 3. PROBABLE EXPLOSIVES STORAGE AREA. Sketch compiled from

25X1D

- 5 -

Handle Via  
TALENT-KEYHOLE  
Control System Only

TOP SECRET RUFF

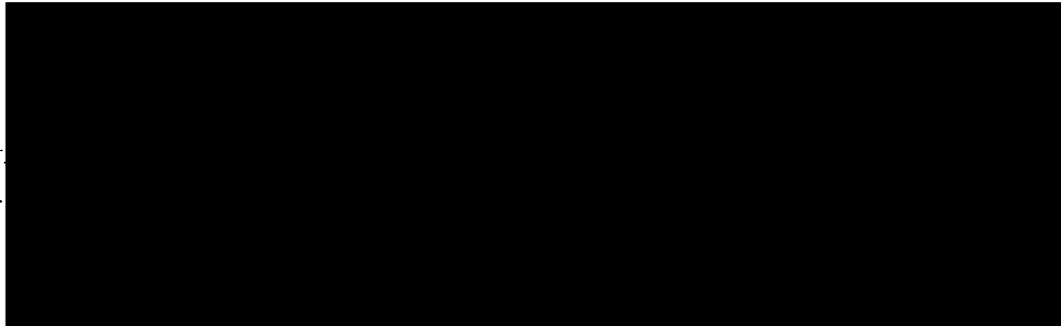
TOP SECRET RUFF

Handle Via  
TALENT-KEYHOLE  
Control System Only

TCS-80731/65

25X1D

REFERENCES



MAPS OR CHARTS

US Air Target Chart, Series 200, Sheet 0154-13HL, 2d ed, Apr 64 (SECRET)

REQUIREMENT

C-RR4-61,733 (partial answer)

NPIC PROJECT

11709/64

TOP SECRET RUFF

Handle Via  
TALENT-KEYHOLE  
Control System Only