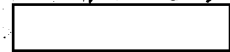


~~TOP SECRET~~

Copy 12
25 Pages

S-17659



25X1

June 1965

PHOTOGRAPHIC INTERPRETATION REPORT

OAK - PART I MISSION 1020-1 AND 2 10-15 AND 16 JUNE 1965



CIA

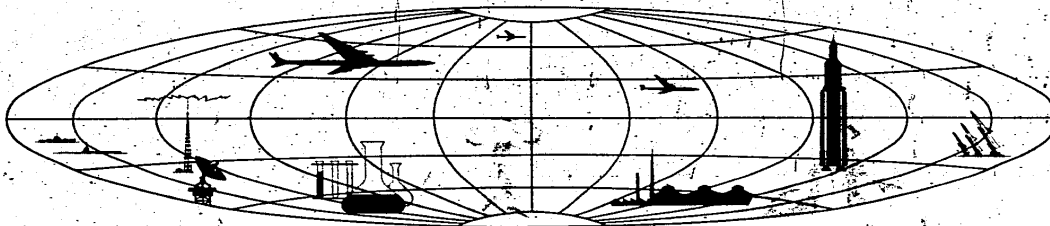


DIA



25X1

NATIONAL PHOTOGRAPHIC INTERPRETATION CENTER



~~TOP SECRET~~

DECLASSIFICATION REVIEW by NIMA/DOD 5/17/00

GROUP 1
Excluded from automatic
downgrading and declassification

25X1

TOP SECRET

25X1

MISSION 1020-102, 10-15 & 16 JUN 65

25X1

TABLE OF CONTENTS

PREFACE	2
TRACK OF MISSION	3
HIGHLIGHTS	6
MISSILES	7
AIR FACILITIES	13
NUCLEAR ENERGY	17
NAVAL ACTIVITY/PORTS	20
BIOLOGICAL/CHEMICAL WARFARE	21
COMPLEXES	22
OTHER ACTIVITY	23
ATTAGHMENTS	APPENDIX

25X1

TOP SECRET

25X1

TOP SECRET

25X1

MISSION 1020-1&2, 10-15 & 16 JUN 65

25X1

OAK - PART I MISSION 1020-1 AND 2

PREFACE

THIS IS THE FIRST OF 2 OAK REPORTS ON MISSION 1020-1 & 2 AND PROVIDES INFORMATION ON THOSE COMMITTEE ON OVERHEAD RECONNAISSANCE (COMOR) TARGETS OBSERVED ON THE PHOTOGRAPHY.

TARGETS ARE ARRANGED IN THE OAK BY SUBJECT AND WITHIN EACH SUBJECT BY COMOR TARGET NUMBER. TARGETS OF OPPORTUNITY OBSERVED DURING THE OAK REPORTING PERIOD ARE LISTED NUMERICALLY UNDER THE APPROPRIATE SUBJECT AFTER THE LISTING OF COMOR TARGETS. LOCATIONS OF TARGETS IN THIS REPORT ARE INDICATED BY THE COUNTRY CODE PRECEDING THE COORDINATES.

SELECTED PHOTOGRAPHIC REFERENCES FOR EACH TARGET OBSERVED AND REPORTED FOLLOW THE DESCRIPTION OF THE TARGET. PASS NUMBERS ARE SUFFIXED WITH EITHER AN A FOR ASCENDING (SOUTH-TO-NORTH), D FOR DESCENDING (NORTH-TO-SOUTH), OR M FOR A MIXED ASCENDING AND DESCENDING PASS. FRAMES ARE INDICATED BY THE LETTERS FR. THE LETTER F PRECEDING FRAME NUMBERS INDICATES THE FORWARD CAMERA, AND THE LETTER A INDICATES THE AFT CAMERA. UNIVERSAL REFERENCE GRID (X-Y) COORDINATES ARE GIVEN IN PARENTHESIS AFTER THE FRAME TO WHICH THEY APPLY. THIS GRID IS IDENTIFIED AS UNIVERSAL GRID NO 1, FEB 64. SYMBOLS INDICATING CONDITIONS WHICH AFFECT THE APPEARANCE OF THE TARGET ON THE PHOTOGRAPHY ARE AS FOLLOWS -- C (CLEAR), H (HAZE), CS (CLOUD SHADOW), HC (HEAVY CLOUD COVER), SC (SCATTERED CLOUD COVER), SD (SEMI-DARKNESS), O (OBLIQUITY), S (SNOW), PQ (POOR IMAGE QUALITY).

OAK RECIPIENTS ARE CAUTIONED THAT THE INITIAL SCAN OF THE PHOTOGRAPHY IS BEING ACCOMPLISHED IN A SHORT TIME AND PRIOR TO FINAL REFINEMENT OF EPHEMERIS DATA. CONSEQUENTLY, FUTURE DETAILED ANALYSIS MAY RESULT IN MINOR ALTERATIONS.

25X1

TOP SECRET

Next 2 Page(s) In Document Exempt

25X1D

Highlights

TOP SECRET

25X1

25X1

MISSION 1020-1&2, 10-15 & 16 JUN 65

HIGHLIGHTS

25X1

25X1A

1. PERM ICBM COMPLEX

TWO TYPE IIID PROBABLE LAUNCH SITES ARE NEWLY IDENTIFIED AND ARE TENTATIVELY DESIGNATED AS SITES G12 AND G13.

25X1A

2. TRAKTOVYY IRBM LAUNCH SITE

NO NEW CONSTRUCTION OR ADDITIONAL DISMANTLING OBSERVED.

25X1A

3. CHEREPOVETS AMM/SAM LAUNCH COMPLEX

THE COMPLEX CAN NOW BE IDENTIFIED AS AN AMM/SAM LAUNCH COMPLEX UNDER CONSTRUCTION.

4. SHUANG-CHENG-TZU POSSIBLE SAM SITE (MISSILE BONUS)

A POSSIBLE SA-2 SITE CONSISTING OF 3 POSSIBLE LAUNCH POSITIONS AND A PROBABLE CENTRAL GUIDANCE AREA IS NEWLY IDENTIFIED 15.4 NM SSW OF THE MAIN SUPPORT BASE.

25X2

25X1A

6. CHIH-CHIN-HSIA NUCLEAR ENERGY COMPLEX

CONSTRUCTION OF THE REACTOR BUILDING HAS PROGRESSED. TWO OF THE 6 COOLING TOWERS APPEAR COMPLETED AND CONSTRUCTION ON THE OTHER 4 HAS PROGRESSED.

STATUS OF COMOR TARGET READOUT

FIFTY-TWO COMOR TARGETS WERE OBSERVED DURING THE OAK REPORTING PERIOD AND ARE CONTAINED IN THIS OAK.

NOTE -- PART 2 OF THIS MISSION WAS RECOVERED PREMATURELY AND IS BEING READOUT CONCURRENTLY WITH PART 1.

25X1

TOP SECRET

Missiles

TOP SECRET

25X1

25X1

MISSION 1020-1&2, 10-15 & 16 JUN 65

MISSILES

25X1

25X1A

VERKHNYAYA SALDA ICBM COMPLEX

UR 5802N 06024E

COMPLEX IS COVERED ON POOR QUALITY PHOTOGRAPHY WITH A FEW SCATTERED CLOUDS. THE COMPLEX SUPPORT FACILITY AND LAUNCH AREA E (SITE 5) ARE THE ONLY COMPONENTS COVERED IN STEREO. NO SIGNIFICANT CHANGE OBSERVED.

NO ABM ACTIVITY OBSERVED IN THE 50-NM-RADIUS SEARCH AREA.

25X1D

25X1A

SHADRINSK ICBM COMPLEX

UR 5608N 06340E

COMPLEX IS COVERED ON CLEAR, FAIR QUALITY PHOTOGRAPHY. NO SIGNIFICANT CHANGE OBSERVED.

NO ABM ACTIVITY OBSERVED IN THE 50-NM-RADIUS SEARCH AREA.

25X1D

25X1A

PERM ICBM COMPLEX

UR 5742N 05619E

COMPLEX IS COVERED ON FAIR QUALITY, NON-STEREO PHOTOGRAPHY WITH SCATTERED-TO-HEAVY CLOUD COVER. TWO TYPE IIID PROBABLE LAUNCH SITES ARE NEWLY IDENTIFIED AND TENTATIVELY DESIGNATED AS LAUNCH SITES G12 AND G13.

NO SIGNIFICANT CHANGE OBSERVED IN THE CLOUD-FREE AREAS OF THE COMPLEX. LAUNCH AREAS B (SITE 2), D (SITE 6), AND F (SITE 4) ARE CLOUD COVERED.

SITE G12 -- NEWLY IDENTIFIED TYPE IIID PROBABLE LAUNCH SITE IS LOCATED AT 57-42N 056-22E, 1.5 NM ENE OF THE COMPLEX SUPPORT FACILITY, NEAR THE RAIL-SPUR SERVING THE COMPLEX. GROUND SCARRING FOR THE LAUNCH SITE IS VISIBLE [REDACTED] BUT WAS NOT VISIBLE [REDACTED] NON-STEREO. PHOTOGRAPHY PREVENTS DETERMINATION OF THE STAGE OF CONSTRUCTION.

25X1D

25X1D

SITE G13 -- THIS NEWLY IDENTIFIED TYPE IIID PROBABLE.

25X1

TOP SECRET

25X1

TOP SECRET

25X1

MISSION 1020-1&2, 10-15 & 16 JUN 65

25X1

25X1D

25X1D

LAUNCH SITE IS LOCATED AT 57-41N 056-15E, 1.8 NM WEST OF THE COMPLEX SUPPORT FACILITY, ADJACENT THE SOUTH SIDE OF THE COMPLEX MAIN ROAD. EVIDENCE OF THE LAUNCH SITE IS VISIBLE [REDACTED] BUT WAS NOT VISIBLE [REDACTED] THE SITE CONSISTS OF A T-SHAPED CLEARING WITHIN THE WOODS. NON-STEREO PHOTOGRAPHY PREVENTS DETERMINATION OF THE STAGE OF CONSTRUCTION.

SITE G1 (SITE 15) IS OBSERVED, BUT NON-STEREO PHOTOGRAPHY PREVENTS ANALYSIS OF DETAILS. SITES G3 (SITE 8), G8 (SITE 12), AND G9 CAN BE IDENTIFIED ONLY. SITES G2 (SITE 7), G4 (SITE 10), G5 (SITE 11), G10 (SITE 16), AND G11 (SITE 17) ARE CLOUD-COVERED AND SITES G6 (SITE 14) AND G7 (SITE 13) ARE NOT COVERED.

THE DISCOVERY OF THE 2 NEW TYPE IIID LAUNCH SITES INDICATES THE EXISTENCE OF AT LEAST 2 LAUNCH GROUPS.

ONLY THE SOUTHERN HALF OF THE 50-NM-RADIUS SEARCH AREA IS COVERED ON PHOTOGRAPHY, AND THIS IS 60 PERCENT OBSCURED BY CLOUDS. NO ABM ACTIVITY OBSERVED.

25X1D

[REDACTED]

25X1A

TYUMEN ICBM COMPLEX

UR 5652N 06551E

COMPLEX IS COVERED ON CLEAR, POOR QUALITY, STEREO PHOTOGRAPHY. NO SIGNIFICANT CHANGE OBSERVED.

NO ABM ACTIVITY OBSERVED IN THE 50-NM-RADIUS SEARCH AREA THROUGH SCATTERED CLOUDS.

25X1D

[REDACTED]

25X1A

TRAKTOVYY IRBM LAUNCH SITE

UR 5325N 06223E

25X1D

NO APPARENT CHANGE [REDACTED] FACILITIES COVERED BY FAIR QUALITY STEREO PHOTOGRAPHY. NO INDICATION OF ANY ACTIVITY. NO NEW CONSTRUCTION OR ADDITIONAL DISMANTLING OBSERVED.

25X1D

[REDACTED]

25X1

TOP SECRET

25X1

TOP SECRET

25X1

25X1

MISSION 1020-102, 10-15 & 16 JUN 65

25X1A

KURUMOCH ROCKET ENGINE TEST FACILITY UR 5331N 04949E

25X1D

NO APPARENT CHANGE [REDACTED] IN FACILITIES AND EQUIPMENT. BLAST MARKS ARE PRESENT AT ONE OF THE LARGE TEST STANDS AND AT ONE OF THE SMALL TEST STANDS.

25X1D

[REDACTED]

KAZAN AIRCRAFT ENGINE PLANT 16 UR 5551N 04907E

NO SIGNIFICANT CHANGE OR NEW CONSTRUCTION OBSERVED. FIFTY PERCENT OF SEARCH AREA COVERED ON CLEAR, NON-STEREO PHOTOGRAPHY. NO TEST STANDS OR MISSILE-RELATED EQUIPMENT OBSERVED.

25X1D

[REDACTED]

TAI-YUAN SOLID PROPELLANT TEST FACILITY CH 3759N 11233E

NO EVIDENCE OF MISSILE PRODUCTION OR RECENT ACTIVITY OBSERVED.

25X1D

[REDACTED]

PERM ROCKET ENGINE TEST FACILITY UR 5801N 05634E

IDENTIFICATION ONLY.

25X1D

[REDACTED]

KUYBYSHEV AIRCRAFT ENGINE PLT FRUNZE 24 UR 5312N 05017E

MODIFICATIONS CONTINUE ON TEST CELLS. NO APPARENT INDICATIONS OF MISSILE-ASSOCIATED ACTIVITY OBSERVED ON GOOD QUALITY, NON-STEREO PHOTOGRAPHY.

25X1D

[REDACTED]

NIZHNAYA SALDA STATIC TEST FACILITY UR 5810N 06057E

25X1D

ENTIRE FACILITY COVERED ON FAIR QUALITY, STEREO PHOTOGRAPHY. NO SIGNIFICANT CHANGE [REDACTED]

25X1D

[REDACTED] CONSTRUCTION CONTINUES IN THE EASTERN PORTION

25X1

TOP SECRET

[REDACTED]

25X1

25X1

TOP SECRET

MISSION 1020-1&2, 10-15 & 16 JUN 65

25X1

OF COMPLEX.

25X1D

25X1A

25X1D

SEVERODVINSK NAVAL BASE AND SHIPYARD 402 UR 6434N 03949E

25X1D

NO APPARENT CHANGE IN FACILITIES

25X1D

VESSELS -- 2 POSSIBLE J-CLASS SSG, 1 UNIDENTIFIED SS, 5 UNIDENTIFIED VESSELS, AND 2 FLOATING DRYDOCKS (1 WITH A COVERED VESSEL WHICH IS PROBABLY THE H-CLASS SSBN IDENTIFIED

25X1D

25X1A

VLADIMIR SUBMARINE BASE

UR 4355N 13528E

NO NEW CONSTRUCTION OBSERVED IN AREA.

VESSELS 4 PROBABLE SS AND 1 POSSIBLE SS.

25X1D

25X1A

VLADIVOSTOK NAVAL BASE AND SHIPYARD 202

UR 4306N 13156E

IDENTIFICATION ONLY.

25X1D

25X1A

PETROVKA SHIPYARD

UR 4307N 13220E

CONSTRUCTION CONTINUES IN FITTING OUT AREA.

VESSELS -- 2 PROBABLE E-CLASS SSGN, 1 POSSIBLE E-CLASS SSGN, 1 SMALL UNIDENTIFIED SS, 3 TRANSPORTER DOCKS (1 OCCUPIED BY A POSSIBLE SS WITH PARTIAL WEATHER SHED COVER), 1 PROBABLE SKORYY-CLASS DD, AND 9 SMALL AUXILIARIES AT PIERS, AND 1 PROBABLE SMALL UNIDENTIFIED SS, 1 TRANSPORTER DOCK, 6 SMALL SURFACE CRAFT, AND 1 MEDIUM PROBABLE SURFACE VESSEL ON REPAIR WAYS.

25X1D

25X1

TOP SECRET

TOP SECRET

25X1

25X1

MISSION 1020-102, 10-15 & 16 JUN 65

25X1

ZALIV STRELOK SUBMARINE BASE PAVLOVSKOGO UR 4252N 13232E

NO CHANGE IN FACILITIES AT BASE OR AT STORAGE AREA

25X1D

25X1A

VESSELS -- 1 E-CLASS SSGN, 1 LARGE UNIDENTIFIED SS, 1 PROBABLE MEDIUM SS (AT POSITION OF PREVIOUSLY REPORTED L-III-CLASS OSS), 1 UNIDENTIFIED AUXILIARY, AND 6 SMALL CRAFT.

25X1D

25X1A

BUKHTA ABREK NAVAL BASE PROMYSLOVKA UR 4255N 13225E

NO NEW CONSTRUCTION OR CHANGE IN FACILITIES

25X1

25X1D

VESSELS -- 1 SVERDLOV-CLASS CL, 1 POSSIBLE KYNDA-CLASS DLGM, 4 PROBABLE KRONSTADT PC, 1 PROBABLE T-43-CLASS MSF, AND 3 POSSIBLE KRUPNYI-CLASS DDGS.

25X1D

25X1A

BUKHTA KONYUSHKOVA SUBMARINE BASE UR 4252N 13222E

FACILITIES AND BERTHING AREAS ARE OBSCURED BY CLOUDS.

VESSELS -- 2 POSSIBLE SS PARTIALLY VISIBLE THROUGH CLOUDS.

25X1D

25X1A

CHEREPOVETS AMM/SAM LAUNCH COMPLEX UR 5906N 03810E

COMPLEX IS OBSERVED ON FAIR QUALITY, STEREO PHOTOGRAPHY WITH INTERPRETATION LIMITED BY HAZE. IT CAN NOW BE IDENTIFIED AS AN AMM/SAM LAUNCH COMPLEX UNDER CONSTRUCTION BECAUSE OF SIMILARITIES IN APPEARANCE, ARRANGEMENT, AND MENSURATION OF FACILITIES TO THOSE OF THE TALLINN AMM/SAM LAUNCH COMPLEX. CONSIDERABLE

25X1D

25X1D

CONSTRUCTION PROGRESS IS EVIDENT WITHIN THE 5 LAUNCH SITES, THE ELECTRONIC SITE SOUTH OF THE LAUNCH AREA, AND IN THE AREA NORTH OF THE LAUNCH AREA AND IN THE AREA NORTH OF THE MAIN ROAD SERVING THE LAUNCH AREA.

25X1

TOP SECRET

25X1

TOP SECRET

25X1

MISSION 1020-182, 10-15 & 16 JUN 65

25X1

CONSTRUCTION ACTIVITY IS UNDERWAY WITHIN EACH LAUNCH SITE. SITE D IS IN A LESS ADVANCED STAGE OF CONSTRUCTION THAN THE OTHER SITES. THE CENTRAL PROBABLE GUIDANCE/CONTROL AREAS OF SITES A, B, C, AND E ARE UNDER CONSTRUCTION. STATUS OF LAUNCH POSITION CONSTRUCTION VARIES WITHIN THE SITES. NEW ACCESS ROADS SERVING LAUNCH SITES A AND E ARE UNDER CONSTRUCTION.

25X1D

AT THE ELECTRONIC SITE, 3 POSITIONS, A CLEARING FOR A FOURTH, AND A CENTRALLY LOCATED POSITION ARE OBSERVED. CONSTRUCTION ACTIVITY WAS OBSERVED AT THIS SITE IN

25X1D

[REDACTED] BUT IT WAS NOT PRESENT [REDACTED] THE STRUCTURES AND ROAD NETWORK UNDER CONSTRUCTION WITHIN THE COMPLEX SECURITY FENCING NORTH OF THE LAUNCH AREA ARE NOT CLEARLY DISCERNIBLE. THIS ACTIVITY WAS NOT PRESENT [REDACTED] AND WAS UNDERWAY [REDACTED] WHEN SNOW LIMITED INTERPRETATION.

25X1D

25X1D

25X1D

A NEW AREA OF UNIDENTIFIED CONSTRUCTION ACTIVITY IS LOCATED NW OF THE SECURED COMPLEX ALONG THE ROAD LEADING FROM THE SUPPORT AREA TOWARD THE COMPLEX. NO SIGNIFICANT CHANGE IS DISCERNIBLE IN THE SUPPORT AREA WNW OF THE SECURED COMPLEX.

NO ASSOCIATED ELECTRONIC OR COMMUNICATION FACILITIES IDENTIFIED IN CLOUD-FREE PORTIONS OF THE 50-NM SEARCH AREA.

(SEE ATTACHMENT)

25X1D

SHUANG-CHENG-TZU POSSIBLE SAM SITE

CH 4044N 10003E

BONUS 1

A NEWLY IDENTIFIED POSSIBLE SA-2 SITE IS LOCATED 15.4 NM SSW OF SHUANG-CHENG-TZU MISSILE TEST CENTER MAIN SUPPORT BASE AT 49-44-30N 100-03-00E.

THREE POSSIBLE LAUNCH POSITIONS AND A PROBABLE CENTRAL GUIDANCE AREA CAN BE IDENTIFIED. A PROBABLE SUPPORT AREA IS APPROXIMATELY 500 FT EAST OF THE SITE.

25X1D

25X1

TOP SECRET

**Air
Facilities**

TOP SECRET

25X1

25X1

MISSION 1020-1&2, 10-15 & 16 JUN 65

25X1

AIR FACILITIES

25X1A

ENGELS AIRFIELD

UR 5129N 04611E

25X1

AIRCRAFT [REDACTED] 35 HEAVY SWEEP-WING (ONE IN MAINTENANCE AREA), 2 MEDIUM SWEEP-WING, 1 MEDIUM STRAIGHT-WING, 2 LIGHT STRAIGHT-WING, 1 SMALL STRAIGHT-WING, AND 4 SMALL UNIDENTIFIED AIRCRAFT ON PARKING APRONS. [REDACTED] 34 HEAVY SWEEP-WING, 2 MEDIUM SWEEP-WING, 3 MEDIUM STRAIGHT-WING, 3 LIGHT STRAIGHT-WING, 1 SMALL STRAIGHT-WING, AND 10 SMALL UNIDENTIFIED AIRCRAFT ON PARKING APRONS.

25X1

25X1D

25X1A

SPASSK-DALNIY AIRFIELD EAST

UR 4437N 13253E

NO NEW CONSTRUCTION OR CHANGE IN FACILITIES OBSERVED ON CLEAR, GOOD QUALITY PHOTOGRAPHY.

AIRCRAFT -- NONE OBSERVED.

25X1D

25X1A

MOZDOK AIRFIELD

UR 4347N 04436E

NO CHANGE IN FACILITIES IN CLOUD-FREE AREAS.

AIRCRAFT -- 20 BEAR, 1 PROBABLE BADGER, AND 1 SMALL STRAIGHT-WING.

25X1D

25X1D

25X1A

USSURIYSK/VOZDVIZHENKA AIRFIELD

UR 4355N 13156E

NO APPARENT CHANGE IN FACILITIES [REDACTED] AN AAM STORAGE FACILITY IS LOCATED 4,200 FT EAST OF THE CENTER OF THE RUNWAY.

25X1D

25X1D

AIRCRAFT -- 58 BADGER, 35 SMALL SWEEP-WING, AND 12 SMALL STRAIGHT-WING.

25X1D

25X1

TOP SECRET

TOP SECRET

25X1

25X1

MISSION 1020-162, 10-15 & 16 JUN 65

25X1
25X1A

KALININ AIRFIELD

UR 5649N 03545E

25X1D

NO APPARENT CHANGE IN FACILITIES

25X1D

AIRCRAFT -- 53 PROBABLE BADGER AND 1 POSSIBLE MEDIUM STRAIGHT-WING.

25X1D

25X1A

SOLTSY AIRFIELD

UR 5808N 03020E

25X1D

NO APPARENT CHANGE IN FACILITIES
IN CLOUD-FREE AREAS.

25X1D

AIRCRAFT -- 4 BADGER AND 1 POSSIBLE BADGER.

25X1D

25X1A

KHOROL AIRFIELD EAST

UR 4427N 13208E

25X1

CONSTRUCTION OF 3,200-FT EXTENSION ON THE NNW END OF RUNWAY CONTINUES. NO NEW CONSTRUCTION OR CHANGES TO ASM

25X1D

AIRCRAFT -- NONE OBSERVED.

25X1A

MAL-YAVR AIRFIELD

UR 6852N 03343E

25X1D

NO APPARENT CHANGE IN FACILITIES OR PREVIOUSLY REPORTED CONSTRUCTION ACTIVITY OBSERVED ON FAIR QUALITY STEREO PHOTOGRAPHY.

25X1D

AIRCRAFT -- 22 BADGER ON HARDSTANDS AND 1 LIGHT STRAIGHT-WING ON TAXIWAY.

25X1A

ROMANOVKA AIRFIELD WEST

UR 4314N 13219E

NO NEW CONSTRUCTION OR CHANGE IN FACILITIES OBSERVED ON CLEAR, GOOD QUALITY PHOTOGRAPHY.

25X1

TOP SECRET

TOP SECRET

25X1

25X1

MISSION 1020-1&2, 10-15 & 16 JUN 65

AIRCRAFT -- 24 BADGER.

25X1

25X1D

25X1A

SEVEROMORSK AIRFIELD

UR 6901N 03325E

25X1D

NO CHANGE OR ADDITIONS OBSERVED ON CLEAR, GOOD QUALITY, STEREO PHOTOGRAPHY.

AIRCRAFT -- 3 PROBABLE BEAR, 59 PROBABLE BADGER, AND 2 LIGHT STRAIGHT-WING.

25X1D

25X1A

ARTEM AIRFIELD NORTH

UR 4323N 13209E

25X1

NO NEW CONSTRUCTION ACTIVITY OBSERVED.

AIRCRAFT -- 4 BADGER IN EAST MAINTENANCE FACILITY, 52 BADGER AND 3 SMALL STRAIGHT-WING ON HARDSTANDS AND PARKING APRONS ALONG SOUTH SIDE OF RUNWAY, AND 2 BADGER, 1 MEDIUM STRAIGHT-WING, AND 1 LIGHT STRAIGHT-WING AT OLD AIRFIELD SITE.

25X1D

25X1A

KIPELOVO AIRFIELD

UR 5911N 03907E

25X1

AIRCRAFT 2 HEAVY SWEPT-WING 2 HEAVY SWEPT-WING.

25X1

25X1D

25X1A

KAZAN AIRFRAME PLANT GORBUNOV 22

UR 5552N 04907E

NO SIGNIFICANT CHANGE OR NEW CONSTRUCTION OBSERVED ON OBLIQUE, NON-STEREO COVERAGE.

25X1

TOP SECRET

25X1

TOP SECRET

25X1

MISSION 1020-102, 10-15 & 16 JUN 65

AIRCRAFT -- 18 PROBABLE MEDIUM SWEEP-WING.

25X1

25X1D

25X1A

KUYBYSHEV AIRFRAME PLANT LENIN 18

UR 5313N 05019E

NO SIGNIFICANT CHANGE IN PLANT AND AIRCRAFT FACILITIES OBSERVED

25X1D

AIRCRAFT -- 2 CLEAT, 9 HEAVY SWEEP-WING, 1 MEDIUM STRAIGHT-WING, 3 LIGHT STRAIGHT-WING, AND 3 POSSIBLE LIGHT STRAIGHT-WING.

25X1D

25X1A

KUN-MING AIRFIELD

CH 2459N 10244E

NO APPARENT CHANGE IN FACILITIES
NO RADAR OBSERVED IN CLOUD-FREE AREAS.

25X1D

25X1D

AIRCRAFT -- NONE OBSERVED.

25X1D

25X1

TOP SECRET

**Nuclear
Energy**

Next 2 Page(s) In Document Exempt

25X2

**Naval
Activity/
Ports**

25X1

TOP SECRET

[REDACTED]

[REDACTED]

25X1

[REDACTED]

MISSION 1020-102, 10-15 & 16 JUN 65

25X1.

25X1A

NAVAL ACTIVITY/PORTS

WU-CHANG SHIPYARD

CH 3032N 11417E

[REDACTED]

25X1D

NO APPARENT CHANGE IN FACILITIES

[REDACTED]

25X1D

THERE ARE WEATHER SHEDS OVER THE BUILDING WAYS WHERE 2
SUBMARINES WERE OBSERVED

[REDACTED]

25X1D

25X1D

[REDACTED]

25X1A

GORKIY SHIPYARD & HEAVY EQUIP PLT 112

UR 5622N 04352E

[REDACTED]

25X1D

NO APPARENT CHANGE IN FACILITIES

[REDACTED]

25X1D

VESSELS -- 5 UNIDENTIFIED AND SEVERAL BARGES.

25X1D

[REDACTED]

25X1

[REDACTED]

**Biological/
Chemical
Warfare**

25X2

Complexes

25X1

TOP SECRET

25X1

MISSION 1020-182, 10-15 & 16 JUN 65

25X1

25X1A

COMPLEXES

MEDAN COMPLEX

ID 0335N 09840E

25X1D

NO SIGNIFICANT CHANGE
SAM ACTIVITY OBSERVED IN CLOUD-FREE AREAS.

NO

25X1D

25X1

TOP SECRET

**Other
Activity**

25X2

Attachments

25X1

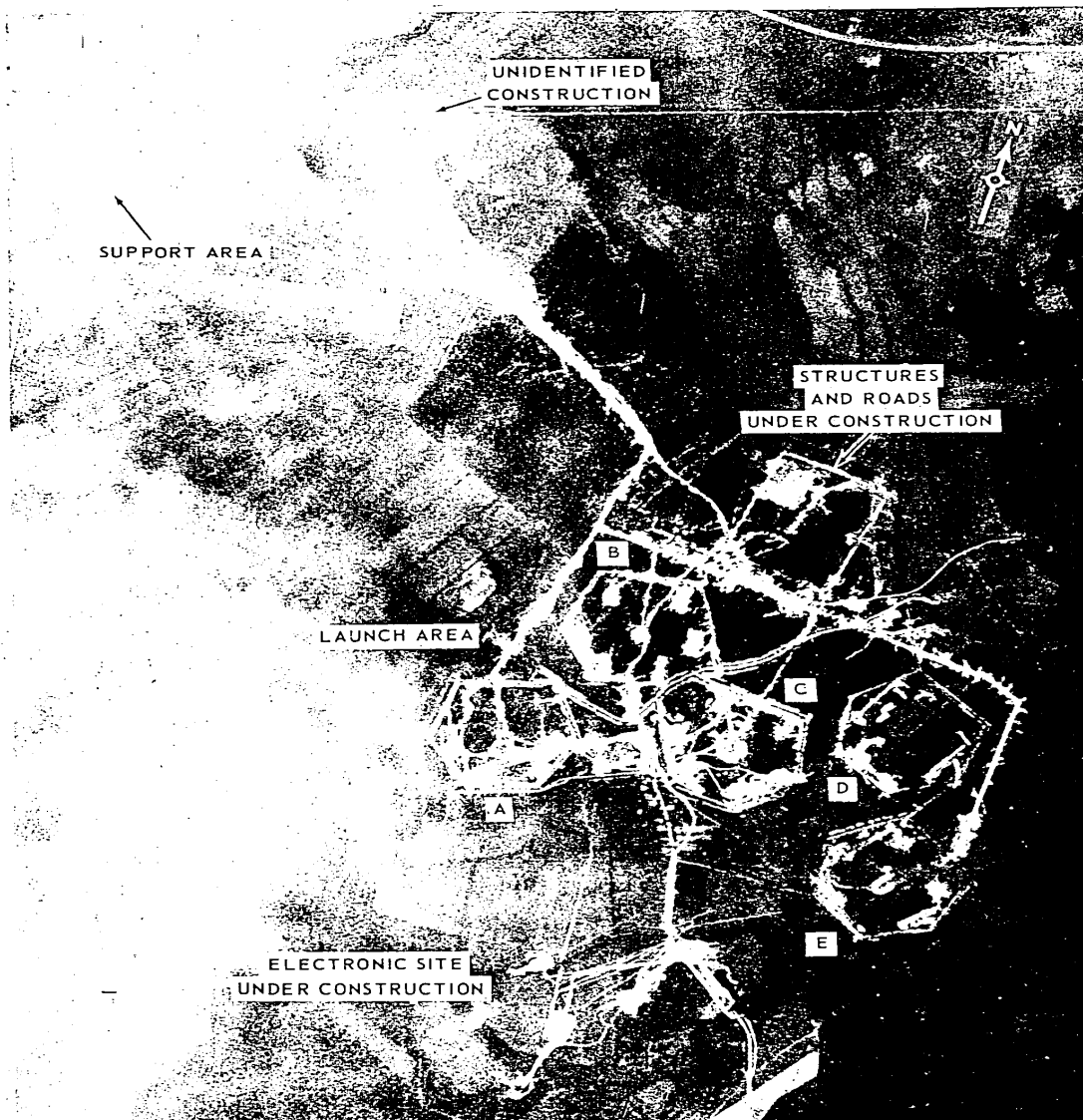
TOP SECRET

25X1

MISSION 1020-1 AND 2, 10-15 AND 16 JUNE 1965

ATTACHMENT 1

25X1



AMM SAM LAUNCH COMPLEX, CHEREPOVETS, USSR

25X1

TOP SECRET

25X1

25X2