

Page Denied

TOP SECRET

COPY

9

31 PAGES

[Redacted Box]

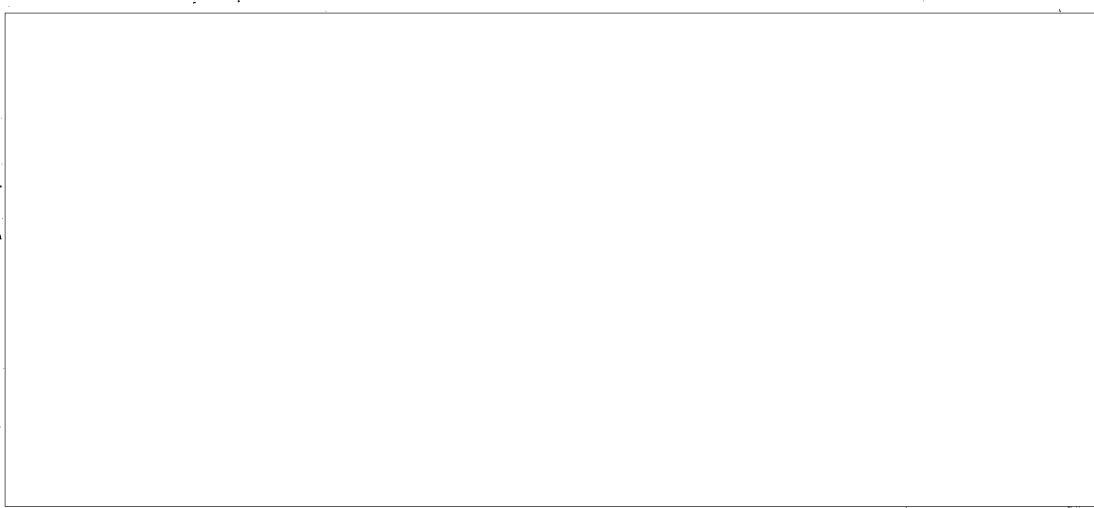
25X1

DATE May 1965

CENTRAL INTELLIGENCE AGENCY
PHOTOGRAPHIC INTELLIGENCE DIVISION
PHOTOGRAPHIC INTELLIGENCE REPORT

**PROBABLE NUCLEAR SUBMARINE
SPECIAL SUPPORT FACILITIES
PETROVKA AND SEVERODVINSK
USSR**

CIA/PIR-5005/65



25X1

TOP SECRET

GROUP 1
Excluded from automatic
downgrading and declassification

S-17453

TOP SECRET RUFF

25X1

25X1

CIA, PHOTOGRAPHIC INTELLIGENCE DIVISION

PROBABLE NUCLEAR SUBMARINE SPECIAL SUPPORT FACILITIES

1. The two newly identified probable nuclear submarine special support facilities are located near the tip of Yagry Island (64 35N - 39 50E), directly across the Nikolskoye Estuary from the Severodvinsk Shipyard and on the tip of the northern point of land forming the entrance to the shipyard at Petrovka (43 07N - 132 20E).

These installations appear identical in outer dimensions and visible characteristics with the exception of the orientation of the large "main" building. At Severodvinsk the long side of this "main" building is in line with the probable processing buildings and the tanks, whereas at Petrovka it is at right angles to the other structures. This distinction is probably due to the land limitations at Petrovka and apparently has no direct bearing on its function. Construction activity began at both sites early in 1962. Unlike Severodvinsk, Petrovka did not have land available at that early date and approximately one year was spent filling an area near the mouth of the harbor. The Severodvinsk site, with land readily available, progressed to a point where its construction status was and is at present approximately one year ahead of the site at Petrovka.

A chronological sequence of annotated photo enlargements and line drawings which illustrate the development of each installation are included as enclosures.

2. This report will discuss primarily the Severodvinsk installation because it is in a more advanced stage of construction. Although all the usable photography was exploited to the fullest most of the detailed analysis was made from the larger scale KH-7 material (CIA/PID/IB-P-542, 544, and 553/65). The KH-7 photographic mission 4015, dated January 1965, was used for the more detailed analysis of each site. Analysis of a subsequent KH-4 mission covering both areas revealed only minor changes.

3. The facilities at Severodvinsk consist of three major components. The first is a very large "main" building with two major sections. The section facing the waterfront appears to be very heavily constructed and contains windows similar to an administration-type building. This portion of the "main" building at one stage of its construction had two interior sections that appeared to be ventilated buildings inside the main structure. As the building was completed these two sections became "buildings within a building" or "rooms within a room", much like the "clean rooms" or

25X1

TOP SECRET RUFF

5-17453

TOP SECRET RUFF

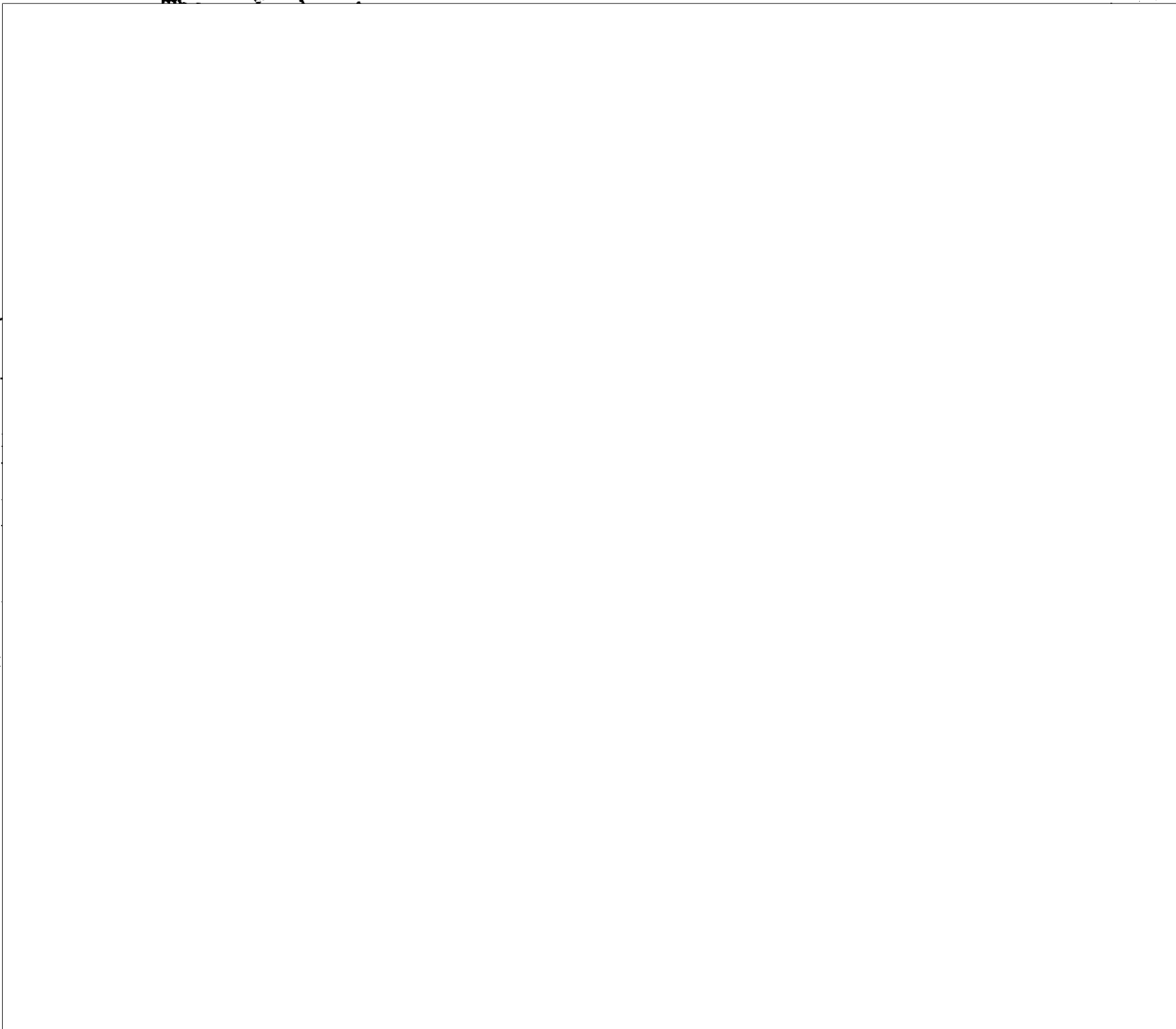
25X1

25X1

CIA, PHOTOGRAPHIC INTELLIGENCE DIVISION

controlled atmosphere rooms currently in use in the United States. The other major section of this "main" building appears to be of a general industrial nature. Immediately in front of the "main" building at the newly completed, crane served, quay two "N" Class Nuclear Submarines were first positively identified in January 1965. One of these submarines had what appeared to be a shed on the deck just aft of the sail. The position of this shed is in approximately the same position, along the centerline of the submarine, as the reactor compartment is believed to be. Whenever reactor work is being conducted on United States' nuclear submarines a shed-like structure is placed over the hull opening.

25X1



- 2 -

TOP SECRET RUFF

25X1

S-17453

TOP SECRET RUFF

25X1

25X1

CIA, PHOTOGRAPHIC INTELLIGENCE DIVISION

25X1

4. In summary, it is believed that the probable nuclear submarine support facilities at Petrovka and Severodvinsk are, or will be when completed, concerned with the decontamination of nuclear submarines and the disposal of the resulting radioactive contaminants. It could not be determined whether or not the actual refueling of nuclear submarines was accomplished at these installations. However; Petrovka currently has, and Severodvinsk will have in the near future, repair facilities capable of general overhaul where refueling is more apt to take place.

5. Areas surrounding other known nuclear submarine support installations, such as Komsomolsk, Petropavlovsk, Litsa Guba and Polyarnny were searched for evidence of facilities similar to those at Severodvinsk and Petrovka with negative results.

6. All measurements have been made by the NPIC Technical Intelligence Division, with the exception of the tank heights. These measurements were made by the CIA/PID project analyst. They should be considered approximate and must not be taken as official NPIC mensuration data. The NPIC/TID measurements are considered accurate within ± 5 feet.

7. The perspective drawings (CIA/PID/IB-P-447/65 and P-449/65) included in enclosures are artists conceptions taken from vertical photography. They depict both installations in a completed state with the exception of the waste storage tanks.

ENCLOSURES:

- 2 Perspective Drawings (CIA/PID/IB-P-447/65 and P-449/65)
- 3 Locator Maps (CIA/PID/IB-P-554/65, P-563/65 and P-564/65)
- 3 Line Drawings (CIA/PID/IB-P-445/65, P-446/65 and P-448/65)
- 17 Annotated Photographic Enlargements
(CIA/PID/IB-P-536/65 through P-553/65)

- 3 -

TOP SECRET RUFF

25X1

5-17453

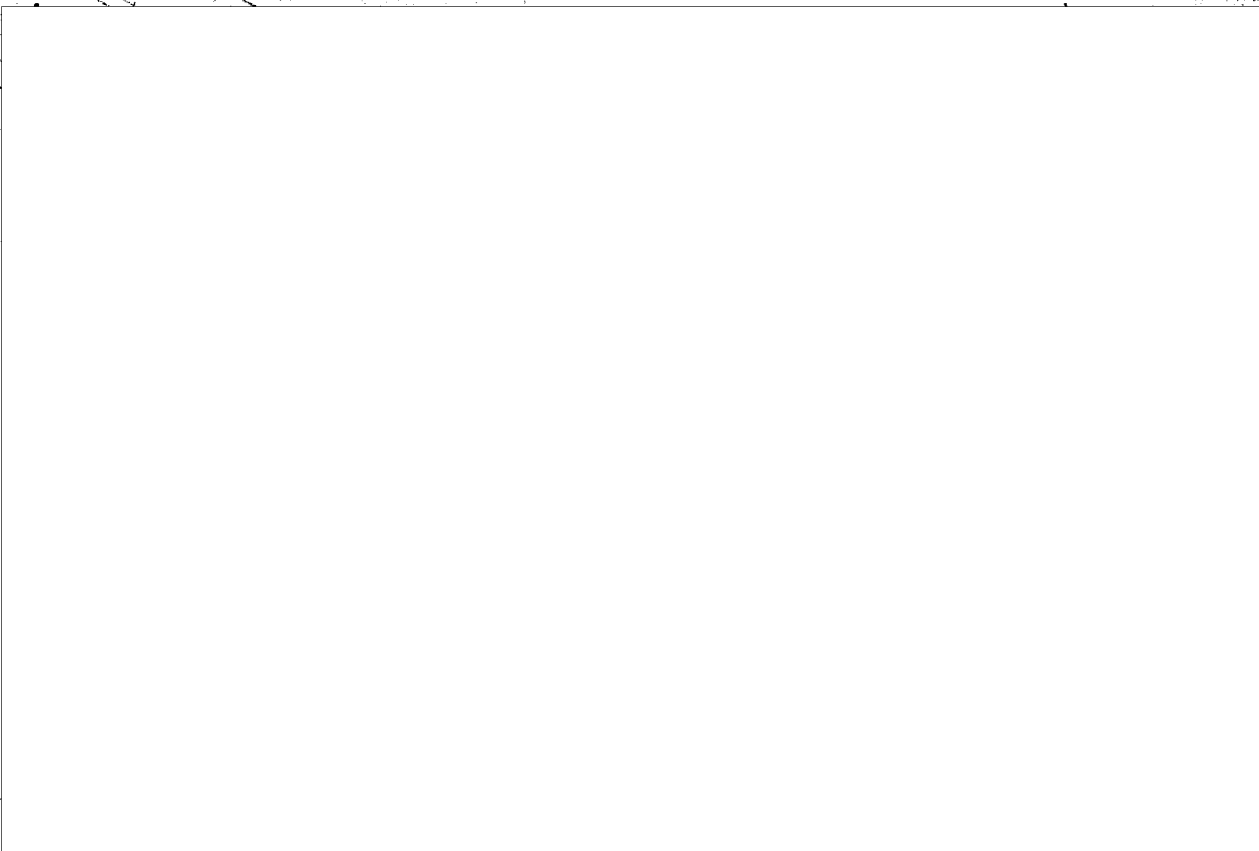
TOP SECRET RUFF

25X1

25X1

CIA, PHOTOGRAPHIC INTELLIGENCE DIVISION

REFERENCES



25X1

MAPS OR CHARTS

Petrovka - USATC 0291-06 HL 4th Edition July 1964
Scale 1:200,000

Severodvinsk - USATC 0092-22 HL 2nd Edition March 1963
Scale 1:200,000

REQUIREMENT

CIA. C-RRS-82,252

PROJECT

30264-5

TOP SECRET RUFF

25X1

5-17453

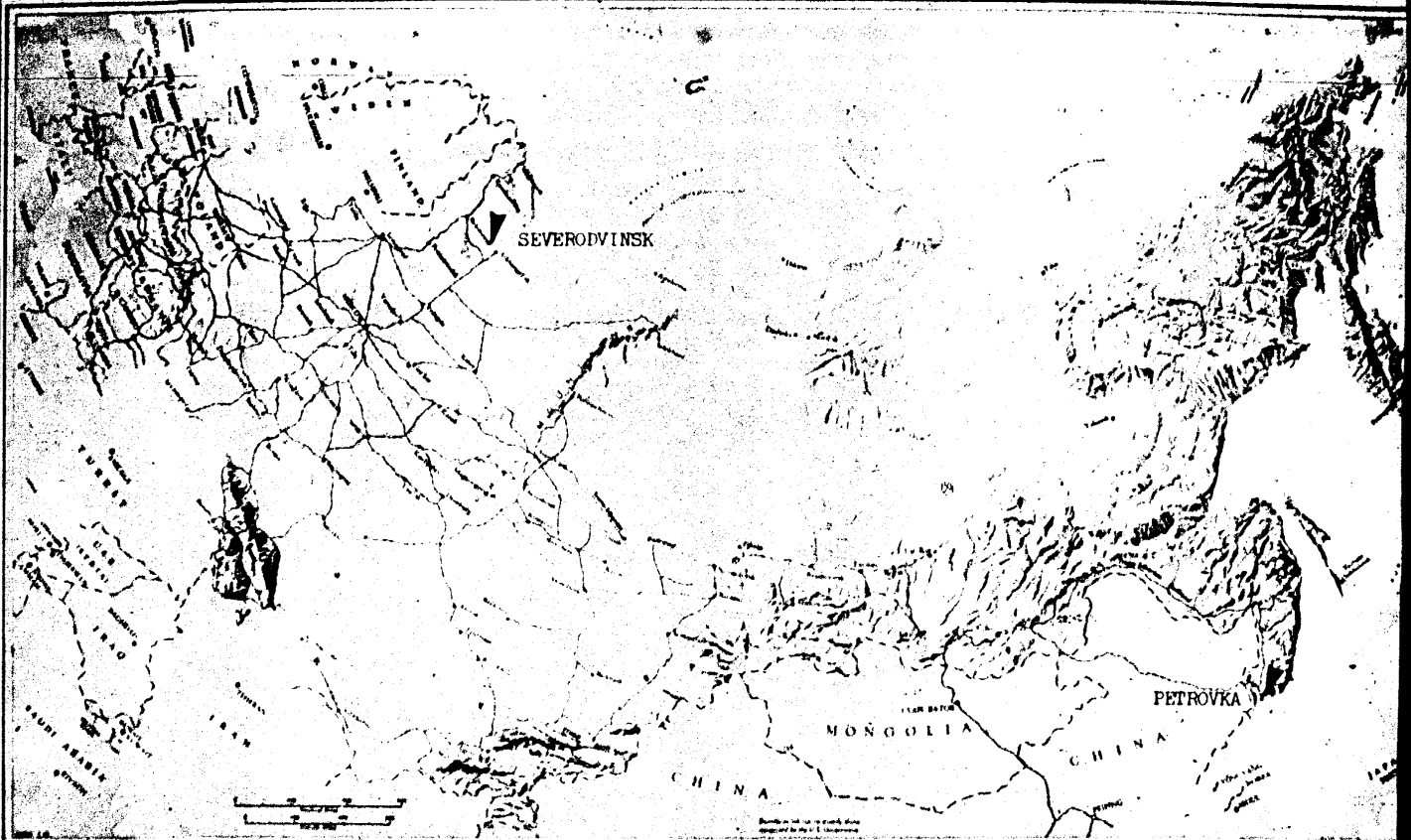
TOP SECRET RUFF

TCB No. 2704/6

25X1

S-17453

PROBABLE NUCLEAR SUBMARINE SPECIAL SUPPORT FACILITIES



CIA/PID/IB-P-536/65

TOP SECRET RUFF

25X1

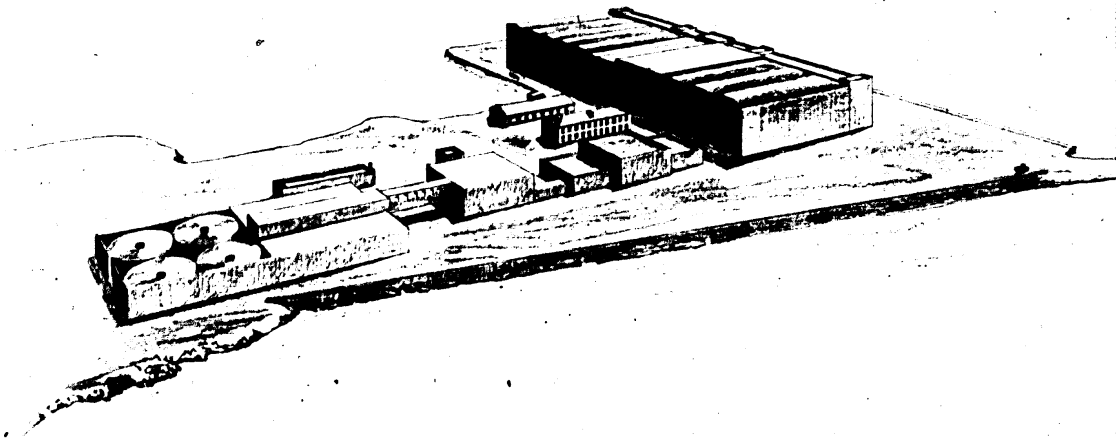
S-17453

TOP SECRET RUFF



25X1
25X1

PROBABLE NUCLEAR SUBMARINE SPECIAL SUPPORT FACILITY PETROVKA, USSR



CIA/P10-18-P-40716

TOP SECRET RUFF



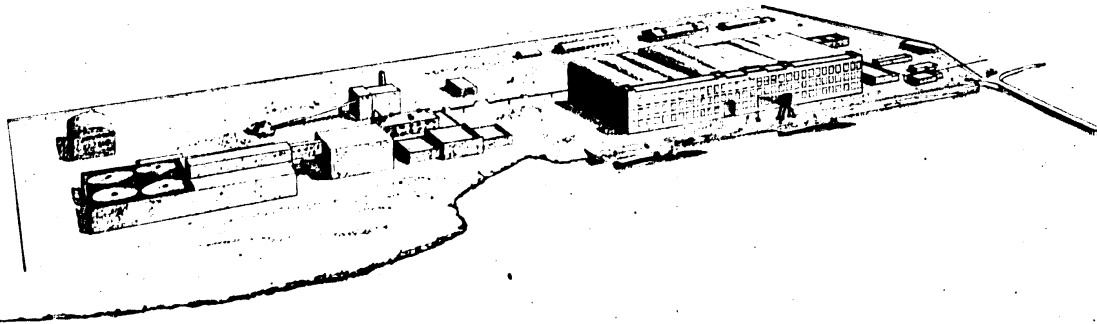
25X1

S-17453

TOP SECRET RUFF

25X1
20X1

**PROBABLE NUCLEAR SUBMARINE SPECIAL SUPPORT FACILITY
SEVERODVINSK, USSR**



Page Denied

25X1

PROBABLE NUCLEAR SUBMARINE
SPECIAL SUPPORT FACILITY
-PETROVKA, USSR-

FILL AREA

CIA/PID/IB-P-537/65

25X1

S-17453

PROBABLE NUCLEAR SUBMARINE
SPECIAL SUPPORT FACILITY
-PETROVKA, USSR-



25X1



EXPANDED FILL AREA

BREAKWATER



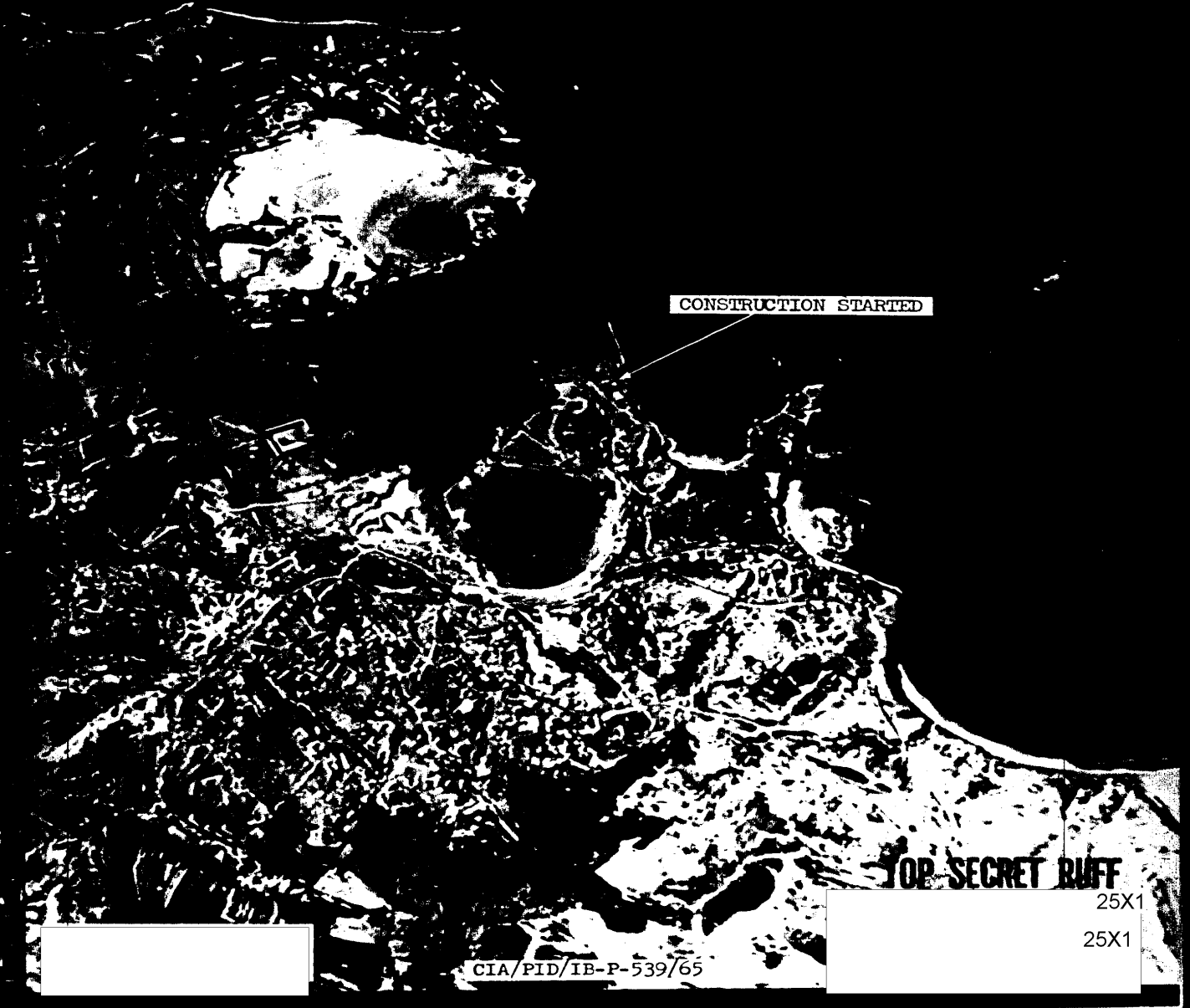
CIA/PID/IB-P-538/65

25X1

S-17453

25X1

PROBABLE NUCLEAR SUBMARINE
SPECIAL SUPPORT FACILITY
-PETROVKA, USSR-



CONSTRUCTION STARTED

TOP SECRET RUFF

25X1

25X1

CIA/PID/IB-P-539/65

S-17453



PROBABLE NUCLEAR SUBMARINE
SPECIAL SUPPORT FACILITY
-PETROVKA, USSR-

[Redacted]

25X1

NEW BREAKWATER

FOUNDATION FOR LARGE BUILDING

FOUNDATION FOR TANKS

[Redacted]

CIA/FID/IB-P-540/65

25X1

S-17453

25X1

PROBABLE NUCLEAR SUBMARINE
SPECIAL SUPPORT FACILITY
-PETROVKA, USSR-

MAIN BUILDING UNDER CONSTRUCTION

FOUNDATIONS FOR TWO PROBABLE
PROCESSING BUILDINGS

FOUR TANKS

TOP SECRET RUFF

225X1

CIA/PID/IB-P-541/65

S-17453

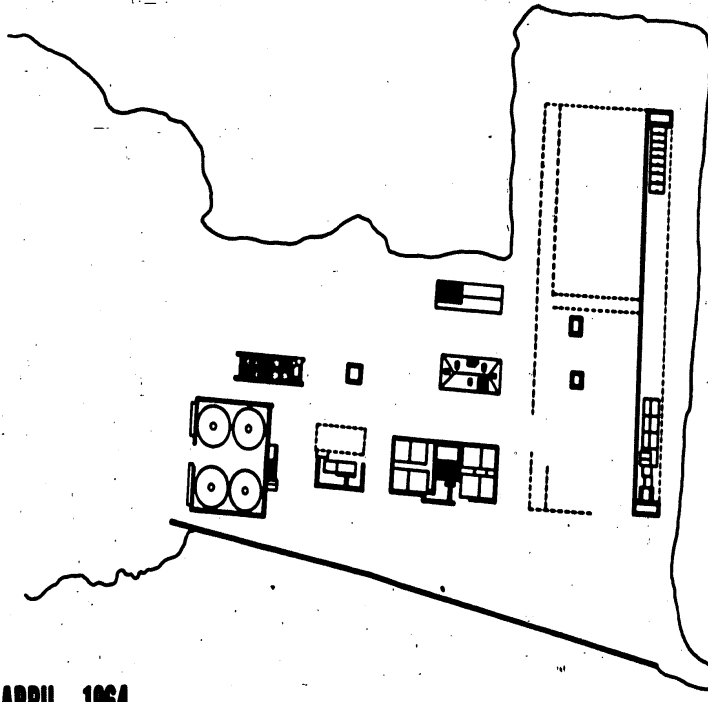
25X1

S-174513

TOP SECRET RUFF

**PROBABLE NUCLEAR SUBMARINE SPECIAL SUPPORT FACILITY
- PETROVKA , USSR -**

25X1



APRIL 1964

CIA/PID-1B-P-46/65

TOP SECRET RUFF

25X1

25X1

PROBABLE NUCLEAR SUBMARINE
SPECIAL SUPPORT FACILITY
-PETROVKA, USSR-

FLOATING CRANE

PROBABLE VENTILATORS

BUILDING MATERIALS

3 PROBABLE PROCESSING BUILDINGS
U/C

WALLED, PROBABLY CONCRETE, TANKS

CIA/FID/IB-P-542/65

25X1

S-17453

25X1

PROBABLE NUCLEAR SUBMARINE
SPECIAL SUPPORT FACILITY
-PETROVKA, USSR-

CONSTRUCTION CONTINUING

QUAY UNDER CONSTRUCTION

FOUNDATIONS FOR FOUR ADDITIONAL TANKS

25X1

CIA/PID/IB-P-543/65

S-17453



S-17453

S-17453

KEY TO ANNOTATIONS

1. UNIDENTIFIED BLDG. (FOOTINGS)	175' x 70'
2. "MAIN" BLDG. ERECTED SECTION FOOTINGS	660' x 50' h 55' 660' x 230'
3. QUAY	520'
4. PROBABLE STORAGE BLDG.	140' x 40'
5. PROBABLE LAB/CONTROL BLDG.	125' x 55' h 30'
6. PROBABLE PROCESSING BLDG.	230' x 90' h 25'
7. PROBABLE PROCESSING BLDG.	100' x 100' h 15'
8. PROBABLE PROCESSING BLDG.	135' x 40' h 20'
9. TANK HOUSING STRUCTURE TANKS HOLES IN TANKS	320' x 195' h 25' h 10' 15' dia.

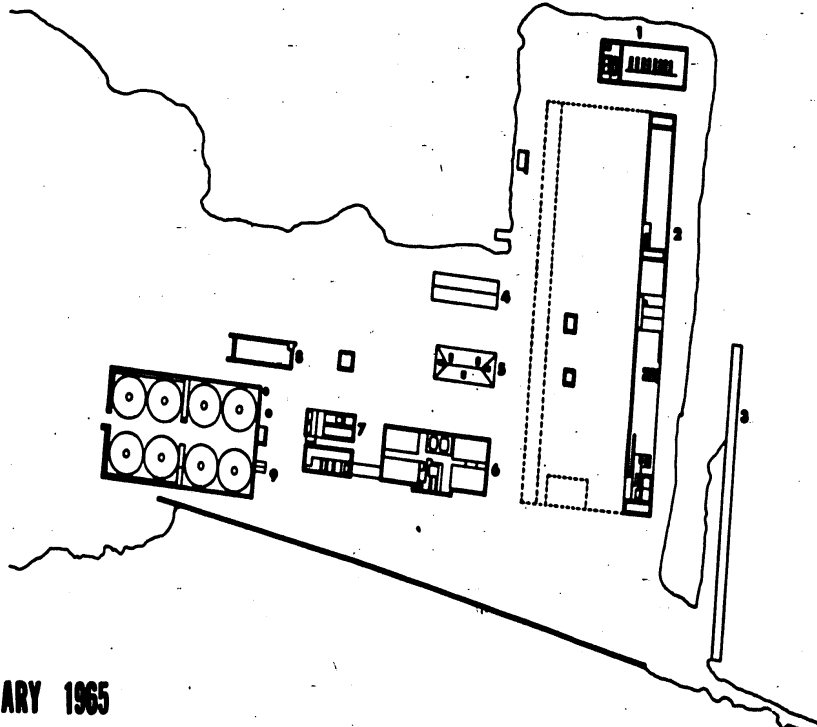
*AVERAGE ESTIMATED HEIGHT

25X1

S-17453

TOP SECRET RUFF

**PROBABLE NUCLEAR SUBMARINE SPECIAL SUPPORT FACILITY
· PETROVKA , USSR ·**



JANUARY 1965

CIA/PID-18-P-446/65

TOP SECRET RUFF

25X1

25X1

25X1

PROBABLE NUCLEAR SUBMARINE
SPECIAL SUPPORT FACILITY
-PETROVKA, USSR-

25X1

25X1

PROBABLE FLOATING CRANE

ROOFS ADDED

TOP SECRET RUSS

25X1
25X1

CIA/PID/IB-P-545/65

S-17453

Page Denied

25X1

PROBABLE NUCLEAR SUBMARINE
SPECIAL SUPPORT FACILITY
-SEVERODVINSK, USSR-

FOUNDATIONS FOR TANKS

CIA/PID/IB-P-546/65

25X1

S-17453

25X1



TOP SECRET

PROBABLE NUCLEAR SUBMARINE
SPECIAL SUPPORT FACILITY
-SEVERODVINSK, USSR-

PROBABLE PROCESSING BUILDINGS
APPEAR COMPLETE

QUAY U/C

TANKS IN PLACE

STEAM PLANT

MAIN BUILDING UNDER CONSTRUCTION

TOP

25X1
25X1

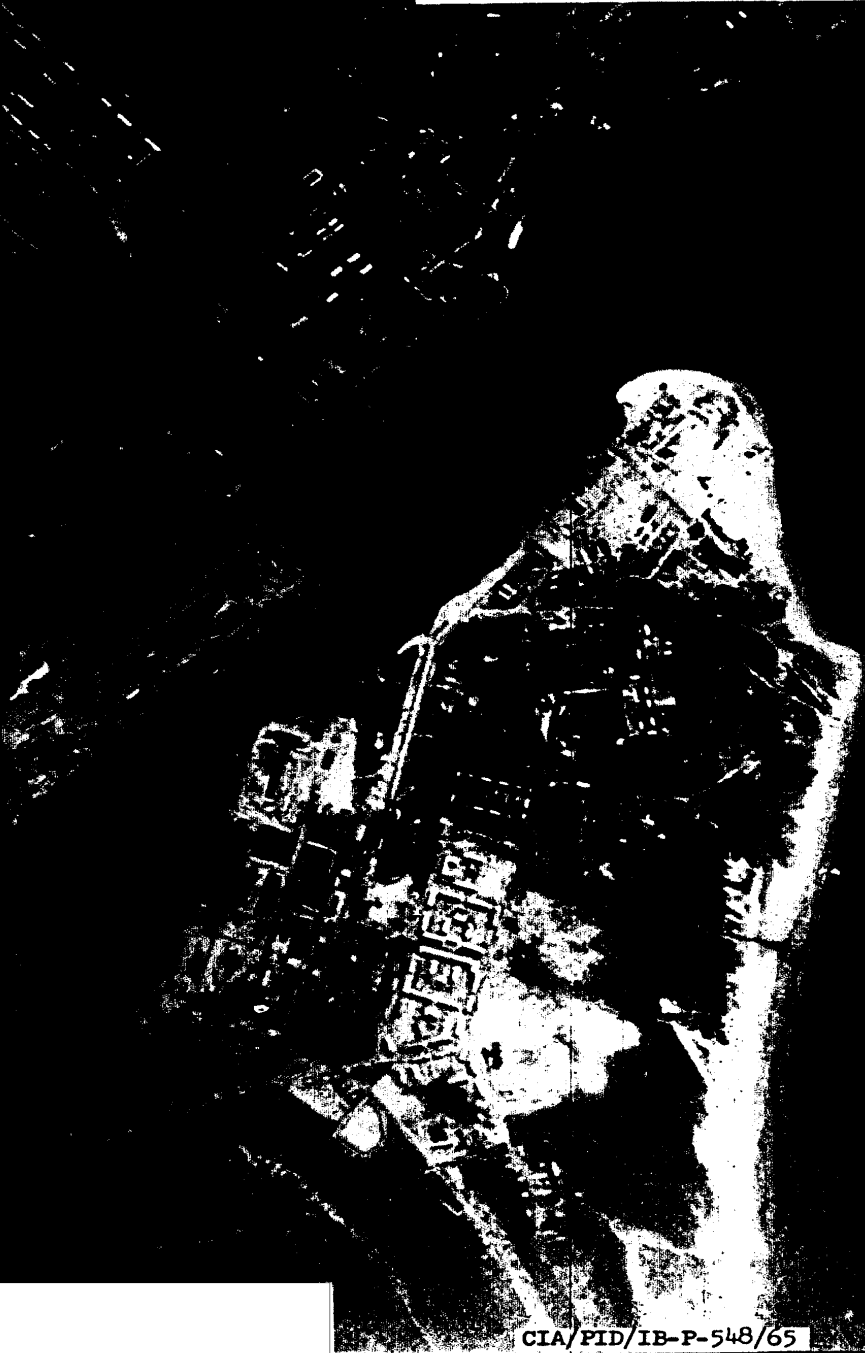
CIA/PID/IB-P-547/65

S-174513

25X1

PROBABLE NUCLEAR SUBMARINE
SPECIAL SUPPORT FACILITY
-SEVERODVINSK, USSR-

NO APPARENT CHANGE SINCE
PREVIOUS COVERAGE



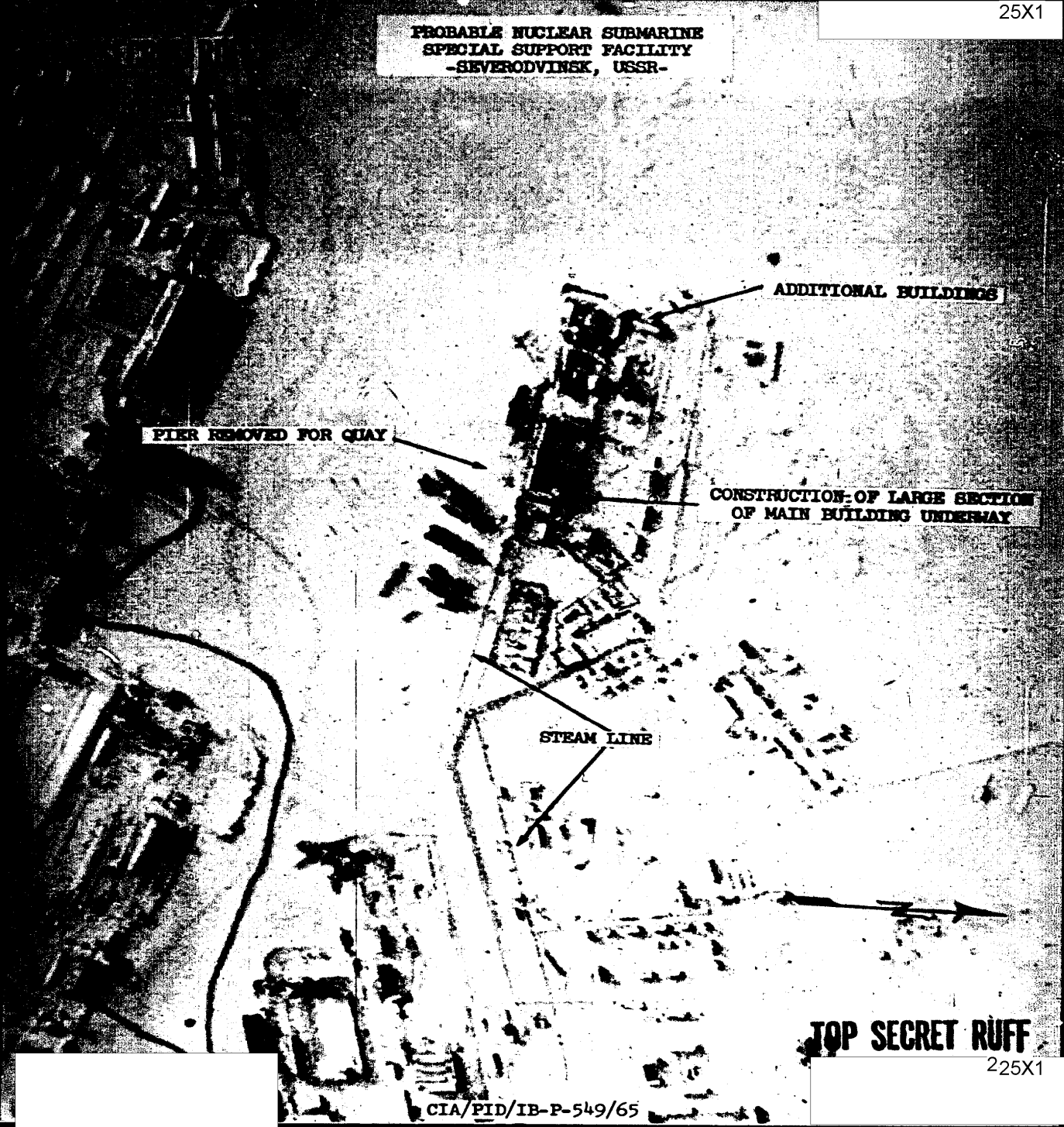
25X1

CIA/PID/IB-P-548/65

S-17453

25X1

PROBABLE NUCLEAR SUBMARINE
SPECIAL SUPPORT FACILITY
-SEVERODVINEK, USSR-



PIER REMOVED FOR QUAY

ADDITIONAL BUILDINGS

CONSTRUCTION OF LARGE SECTION
OF MAIN BUILDING UNDERWAY

STEAM LINE

TOP SECRET RUFF

225X1

CIA/PID/IB-P-549/65

S-17453

25X1

PROBABLE NUCLEAR SUBMARINE
SPECIAL SUPPORT FACILITY
- SEVERODVINSK, USSR -

QUAY NEARLY COMPLETE

WORK CONTINUING ON MAIN BUILDING

25X1

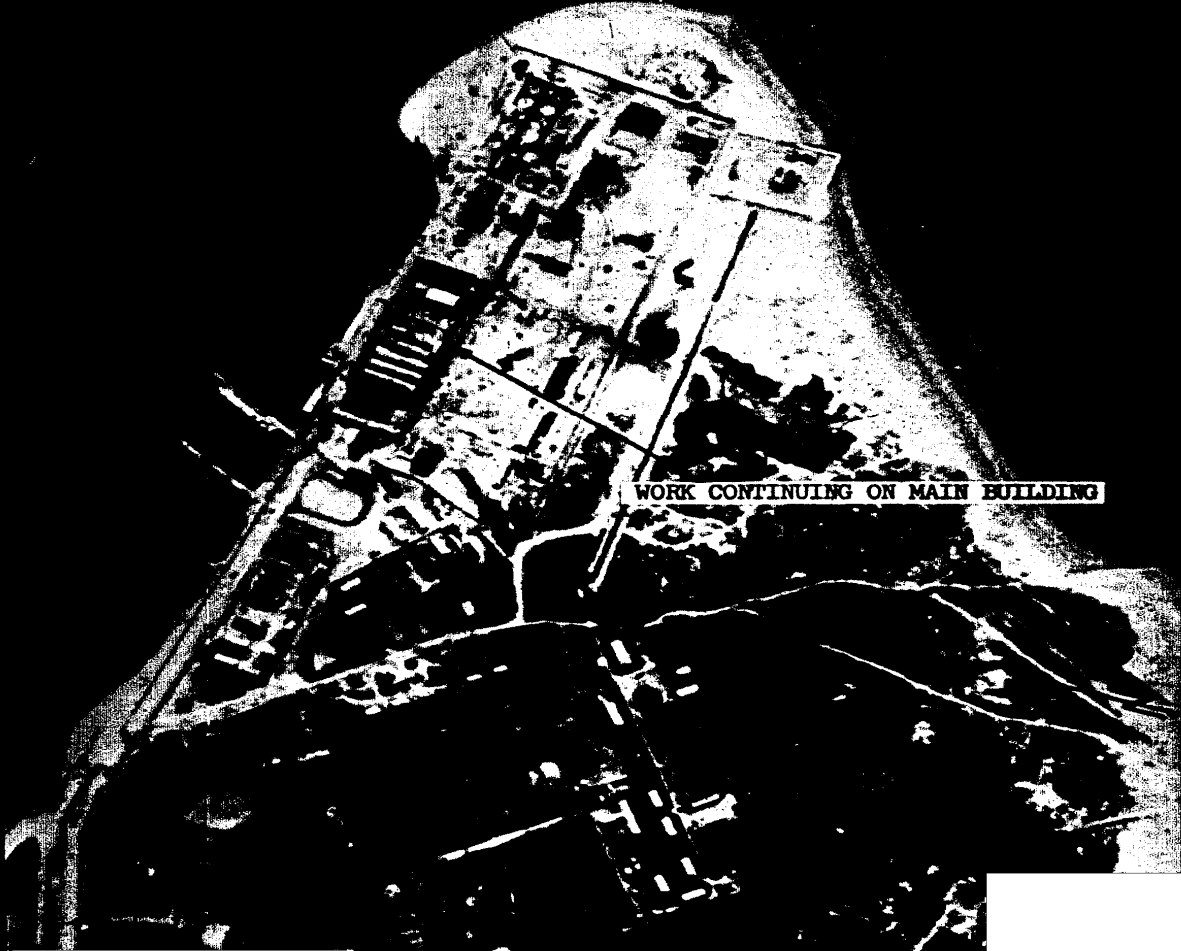
25X1

CIA/FID/IB-P-550/65

S-17453

25X1

PROBABLE NUCLEAR SUBMARINE
SPECIAL SUPPORT FACILITY
-SEVERODVINSK, USSR-



WORK CONTINUING ON MAIN BUILDING

25X1

25X1



CIA/FID/IB-P-551/65

S-17453

25X1

PROBABLE NUCLEAR SUBMARINE
SPECIAL SUPPORT FACILITY
-SEVERODVINSK, USSR-

U/I SUBMARINE

CRANE

25X1

CIA/PID/IB-P-552/65

[Redacted]

S-17453

25X1

25X1

PROBABLE NUCLEAR SUBMARINE
SPECIAL SUPPORT FACILITY
-SEVERODVINSK, USSR-

ROOF OVER HALF OF THE EIGHT TANKS

PROBABLE PROCESSING BUILDINGS

STEAM PLANT

PROBABLE SHED ON DECK
AFT OF SAIL

TWO "T" CLASS SSN

MAIN BUILDING COMPLETE

COMPLETED QUAY

CRANE

STEAM LINE

25X1

CIA/FID/IB-P-553/65

S-17453

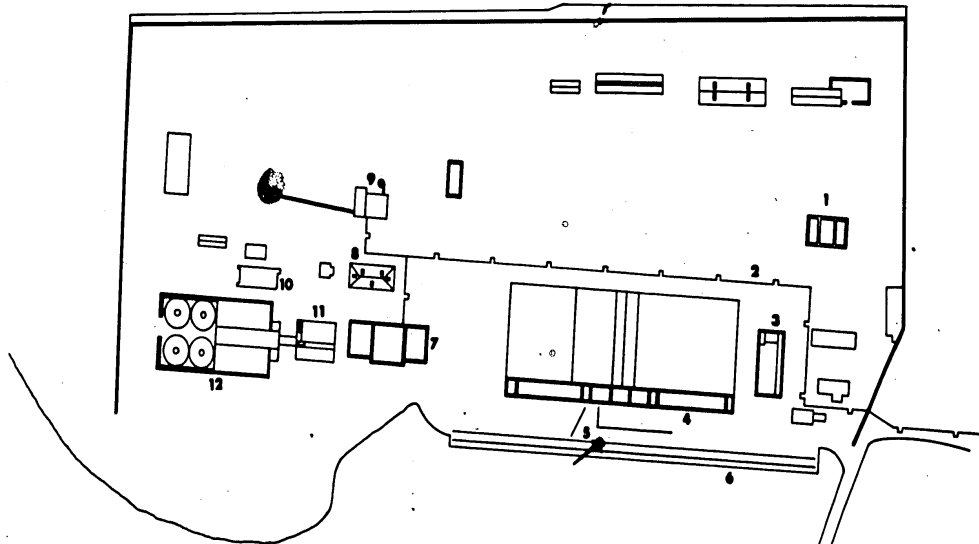
KEY TO ANNOTATIONS

1. UNIDENTIFIED BLDG.	120' x 65'
2. STEAM LINE	
3. UNIDENTIFIED BLDG.	175' x 70'
4. "MAIN" BLDG. FRONT SECTION	660' x 50'*
FABRICATION SECTION	665' x 230'
5. PORTAL JIB CRANE	
6. QUAY	1,045'
7. PROBABLE PROCESSING BLDG.	230' x 90'
8. PROBABLE LAB/CONTROL BLDG.	125' x 55'
9. AUX. STEAM PLANT	
10. PROBABLE PROCESSING BLDG.	135' x 40'
11. PROBABLE PROCESSING BLDG.	100' x 100'
12. TANK HOUSING STRUCTURE	320' x 195'
TANKS	
HOLES IN TANKS	15' dia.

*HEIGHTS UNDETERMINED DUE TO LACK OF SHADOW

TOP SECRET RUFF

**PROBABLE NUCLEAR SUBMARINE SPECIAL SUPPORT FACILITY
· SEVERODVINSK , USSR ·**



JANUARY 1965

CIA/PID-1B-P-448/65

TOP SECRET RUFF

25X1
25X1

25X1