

25X1

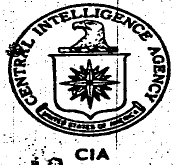
~~SECRET~~

NPIC/R-38/65
February 1965

16620

PHOTOGRAPHIC INTERPRETATION REPORT

SKEAN MISSILE, MOSCOW PARADE, 7 NOVEMBER 1964



NATIONAL PHOTOGRAPHIC INTERPRETATION CENTER



25X1

~~SECRET~~

GROUP 1
Excluded from automatic
downgrading and declassification

25X1

SECRET

PHOTOGRAPHIC INTERPRETATION REPORT

**SKEAN MISSILE, MOSCOW PARADE,
7 NOVEMBER 1964**

NPIC/R-38/65

February 1965

NATIONAL PHOTOGRAPHIC INTERPRETATION CENTER

25X1

SECRET

25X1

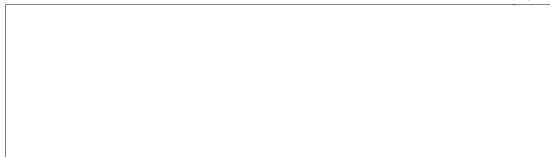
SECRET

NPIC/R-38/65

PREFACE

This report is in response to CIA requirement C-SI4-82,021 and GMAIC Deployment Working Group requirement 54-64 requesting mensuration and line drawings of the SKEAN missile and its transporter.

The mensural data contained in this report were obtained from photographic graphical solutions coupled with scaling and ratio techniques. Because of the geometrical problems involved in mensural analysis of oblique ground photography, some degree of error is inherent. The reader is cautioned that, while in many instances dimensions are carried to the one-hundredth part of a foot, the degree of accuracy is not that reliable. The following is a general guideline in determining what degree of confidence can be placed in the data.



25X1

The reader is further cautioned that the graphics presented with the accompanying mensural data are not intended to be used for detailed engineering analysis.

- iii -

25X1

SECRET

25X1

SECRET

NPIC/R-38/65

25X1

photography taken in Moscow on 7 November 1964, revealed 5 surface-to-surface missiles, 4 of which were actually paraded, believed to be the SS-5 IRBM and assigned the American- designator SKEAN (Figure 1). The numerical designations 0128604, 0128691, 1137721, 1143148, and 2144356 were visible on the missiles. Dimensional drawings and additional photography of the missiles are shown in Figures 2 through 7.

25X1

The SKEAN missile is a single-stage vehicle with a cylindrical, straight-through configuration having a flared tail section and a well-rounded conical, blunted nose. There are no fins on the missile. A raised channel runs

the length of the body, beginning just behind the nose section, and terminating at the beginning of the tail flare. The length of the missile from the nose to the end of the flared tail section is 78.8 feet. The length of the missile including the holddown apparatus at the tail is 81.1 feet. The diameter of the missile increases from 1.75 feet at the nose to 9.4 feet at the tail, with the diameter of the cylindrical, main-body portion being 7.9 feet. There is a cover plug at the rear of the missile concealing engine details.

The missile is carried on a double-axle, 8-wheeled, transporter trailer having a length of 77.75 feet and a wheelbase of 46.7 feet. The

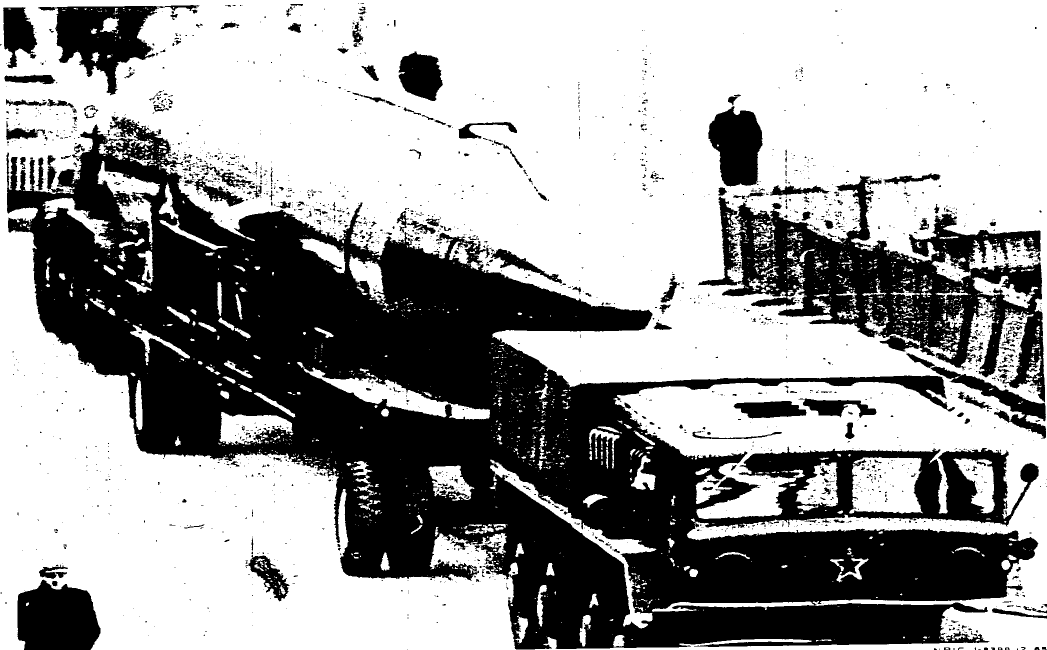


FIGURE 1. THREE-QUARTER FRONT VIEW OF THE SKEAN MISSILE AND TRANSPORTER.

- 1 -

25X1

SECRET

25X1

SECRET

NPIC/R-38/65

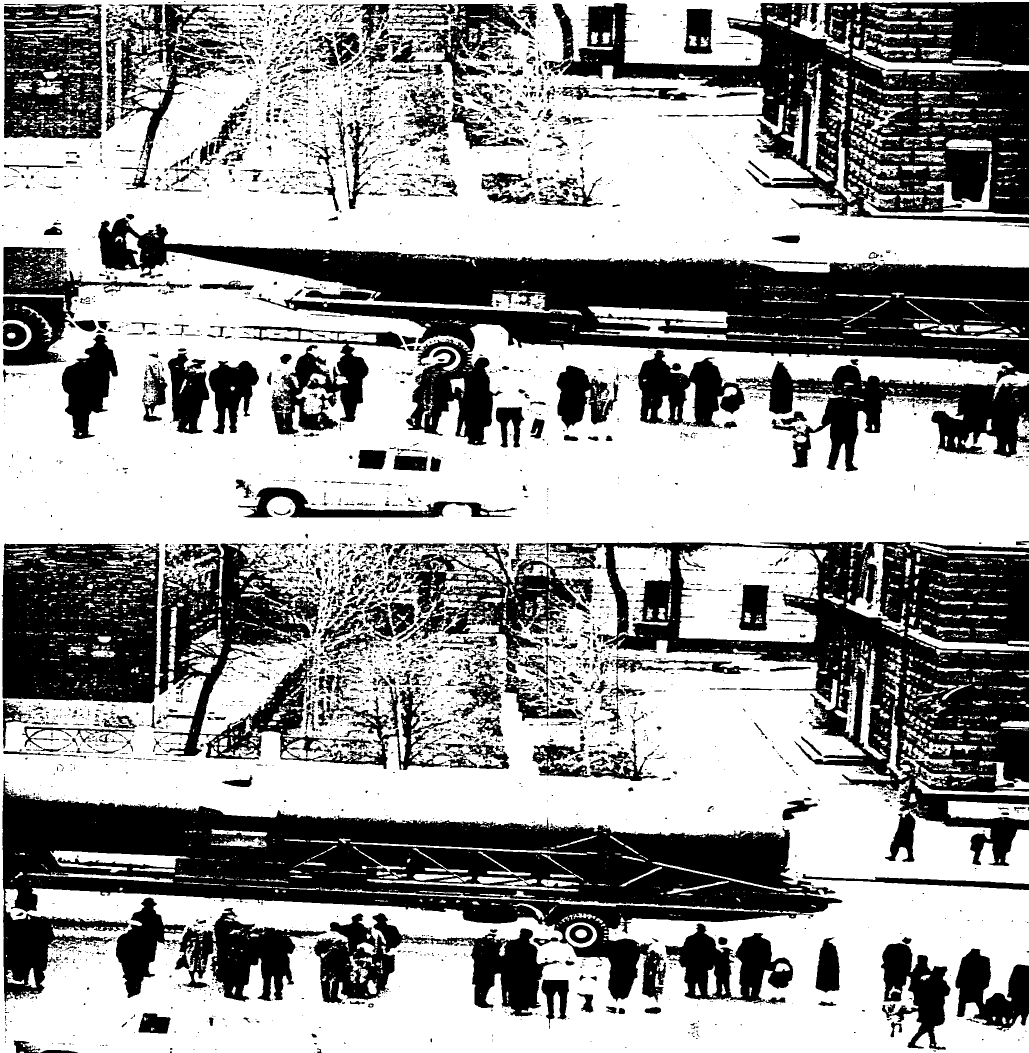


FIGURE 2. SIDE VIEWS OF THE SKEAN MISSILE AND TRANSPORTER.

- 2 -

25X1

SECRET

25X1

SECRET

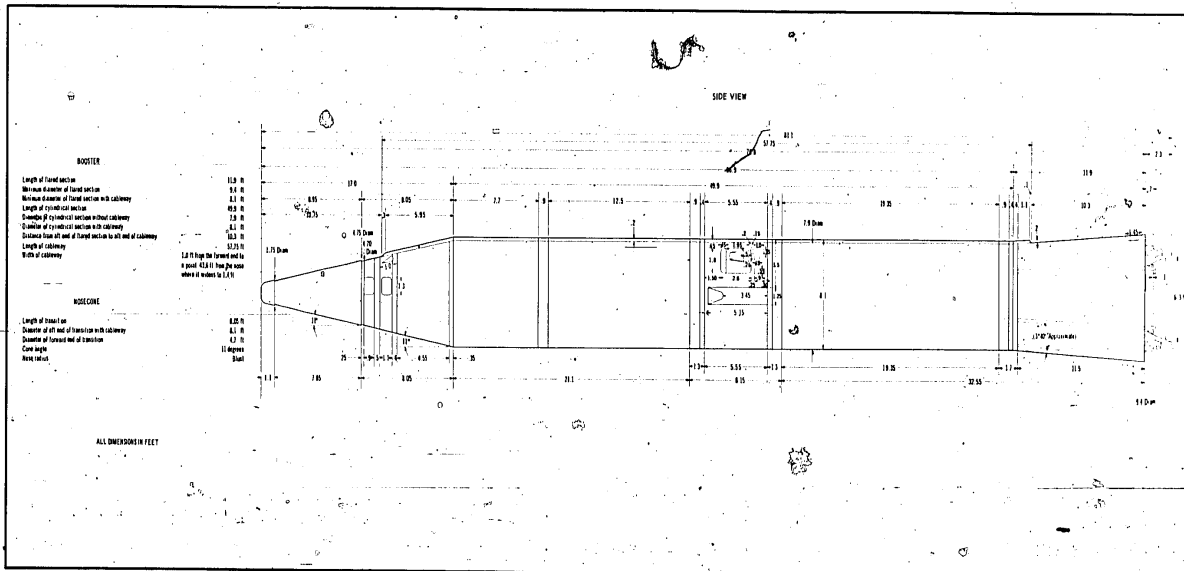
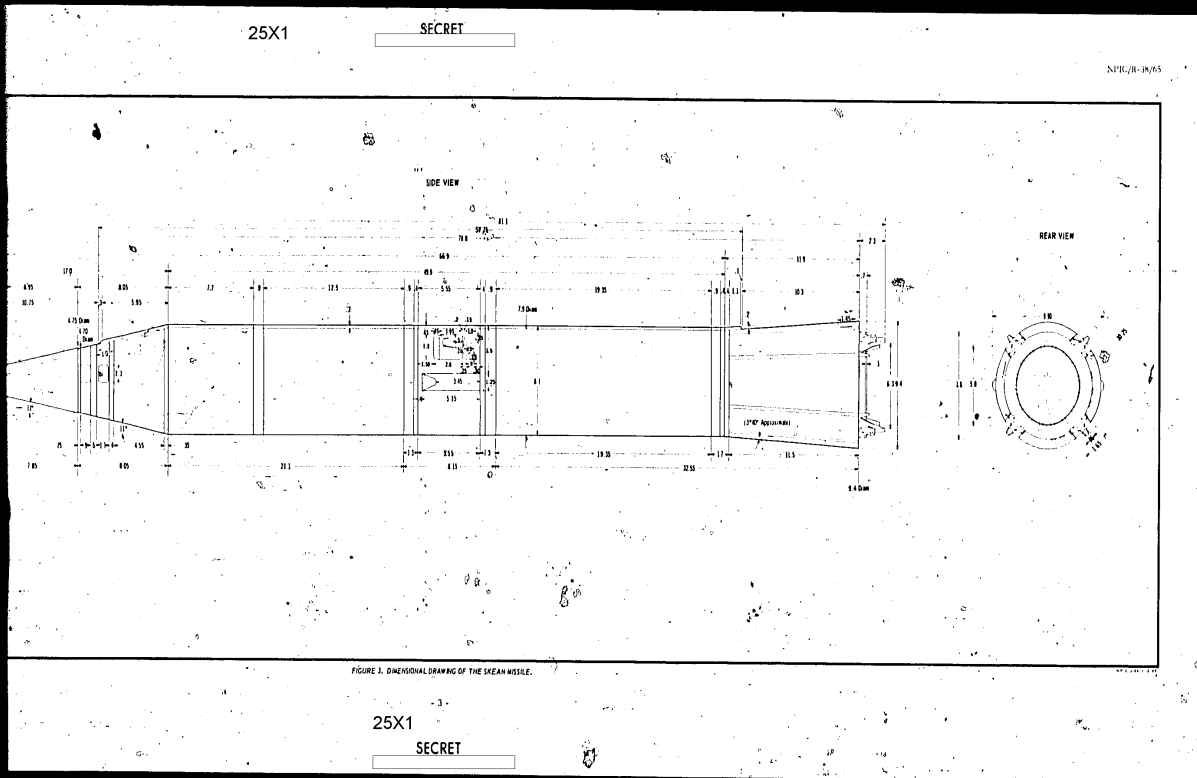


FIGURE 3. DIMENSIONAL DRAWING OF THE SKEAN MISSILE.

25X1

SECRET



25X1

SECRET

NPIC/R-38/65

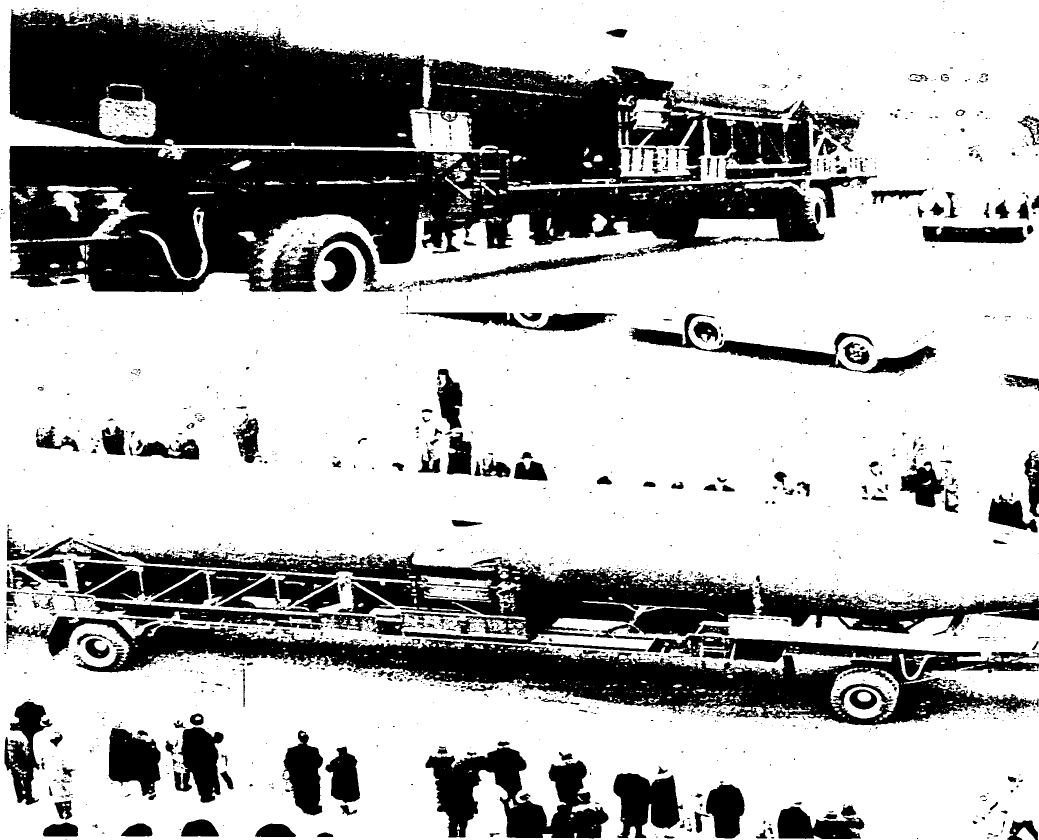


FIGURE 4. OBLIQUE VIEWS OF THE SKEAN MISSILE.

- 5 -

25X1

SECRET

25X1

SECRET

NPIC/R-38/65



FIGURE 5. SIDE VIEWS OF THE TRACTOR VEHICLE PULLING THE SKEAN MISSILE.

- 6 -

25X1

SECRET

25X1

SECRET

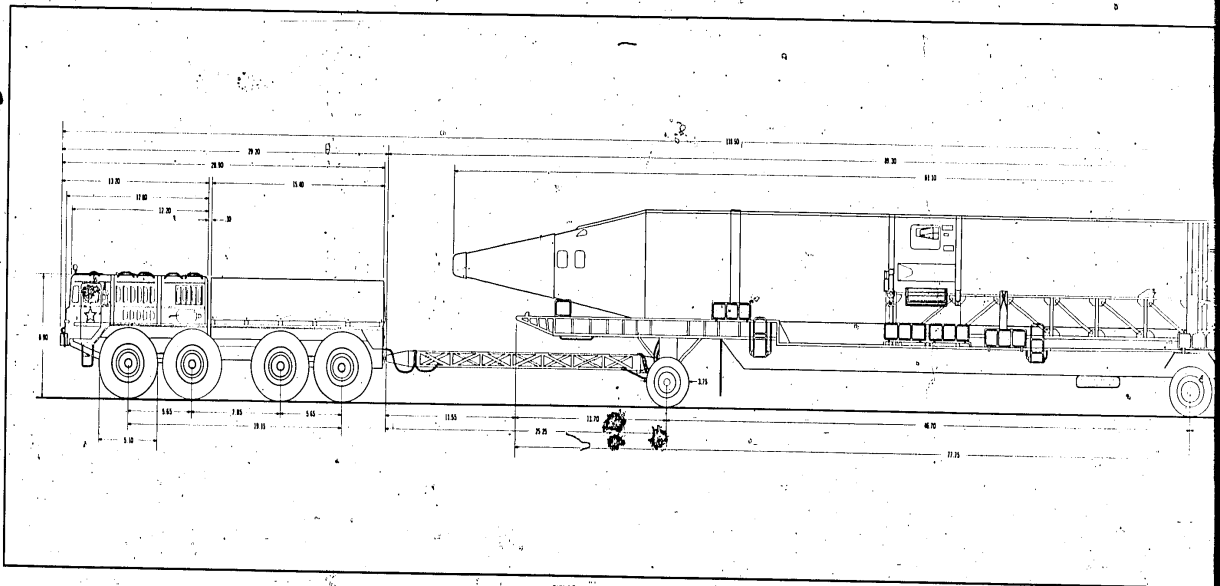


FIGURE 6. DIMENSIONAL DRAWING OF THE SKEAN MISSILE TRANSPORTER TRAILER, AND TRACTOR VEHICLE.

- 7 -

25X1

SECRET

25X1 *

SECRET

NPIC/R-38/65

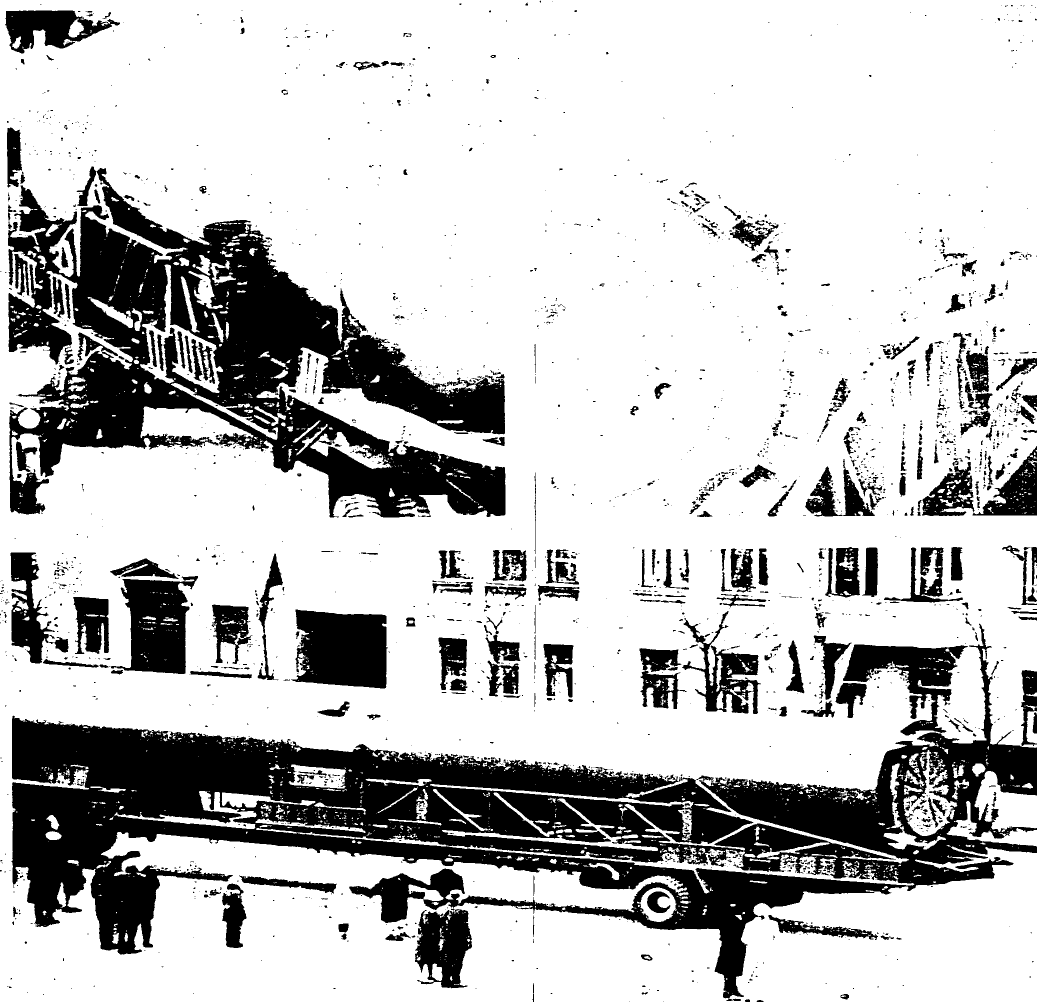


FIGURE 7. ADDITIONAL PHOTOGRAPHY OF THE SKEAN MISSILE.

NPIC/R-38/65

25X1

SECRET

25X1

SECRET

[Redacted]

NPIC/R-38/65

missile is held on the trailer by a tiedown band around the forward section and turnbuckles attached to a stud at the rear. The trailer has 2 extensions at the rear which suggest that it is used as a cradle during erection of the missile. When the missile is on the transporter the maximum height above ground level is 15.10 feet. The trailer was towed by a new unidentified 8-

wheeled tractor vehicle 29.2 feet long with a height at the top of the cab of 8.9 feet. The cab and engine compartment are 12.8 feet long followed by a canvas covered section 15.4 feet long. The wheelbase of the tractor is 19.815 feet. The tractor and the trailer are connected by a towbar 25.25 feet long. The overall length of tractor and transporter trailer is 118.5 feet.

25X1

REFERENCES

PHOTOGRAPHY

25X1

Selected [Redacted] photography of 7 November 1964 (SECRET [Redacted])

REQUIREMENTS

CIA, C-814-82,021 (rev 29 Nov 64)

GMAIC 54-64

NPIC PROJECT

17955-64 (partial answer)

25X1

SECRET

[Redacted]