

Copy **12**
104 Pages

TOP SECRET

March 1965

PHOTOGRAPHIC INTERPRETATION REPORT

16894
+
18352

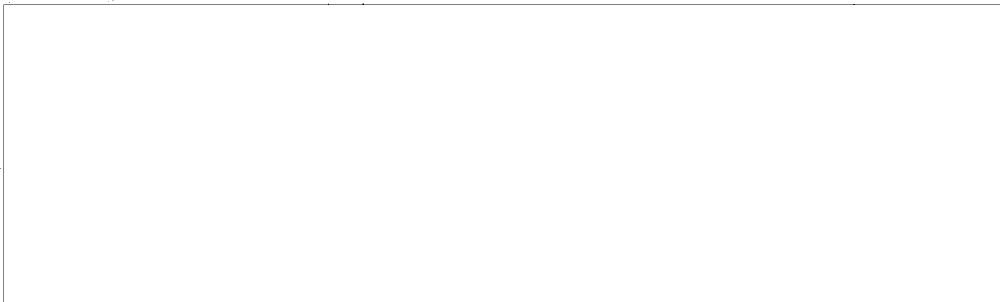
OAK - PART VI
MISSION 4016
13-16 MARCH 1965



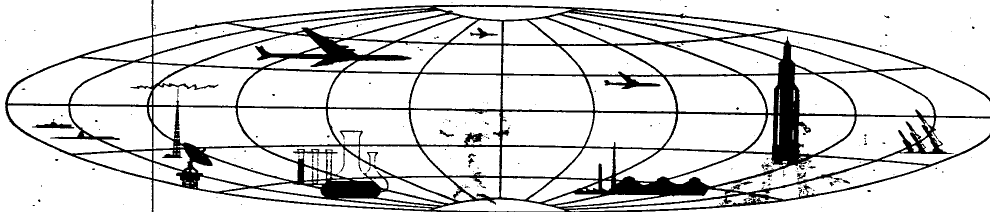
CIA



DIA



NATIONAL PHOTOGRAPHIC INTERPRETATION CENTER



TOP SECRET

GROUP 1
Excluded from automatic
downgrading and declassification

25X1

25X1

TOP SECRET CHESS RUFF

APRIL 1965

NATIONAL PHOTOGRAPHIC INTERPRETATION CENTER

ADDENDUM TO NPIC

1. CONTINUING ANALYSIS OF MISSION 4016, 13-16 MAR 65, REVEALS THAT THE FOLLOWING COMOR TARGETS WERE COVERED BUT NOT INCLUDED IN THE OAK REPORTS FOR THIS MISSION:

KULP-YAVR AIRFIELD

UR 6905N 03224E

NO APPARENT CHANGE SINCE JUN/JUL 62. RUNWAY IS CLEARED OF SNOW. NO NEW CONSTRUCTION ACTIVITY OBSERVED. AIRCRAFT -- 15 PROBABLE FITTER, 5 POSSIBLE FITTER, 18 FAGOT/FRESCO, 1 CAB, AND 2 COLT ALONG MAIN PARKING APRON.

VOSKRESENKA AIRFIELD

UR 4434N 13243E

NO ELECTRONIC OR COMMUNICATIONS FACILITIES OBSERVED. RUNWAY AND TAXIWAYS ARE PARTIALLY CLEARED OF SNOW. AIRCRAFT -- 16 SMALL SWEEP-WING.

2. FURTHER ANALYSIS REVEALS THAT GIRVAS TALL KING RADAR IS NOT COVERED ON PHOTOGRAPHY OF MISSION 4016.

GROUP 1 Excluded from automatic downgrading and declassification

TOP SECRET CHESS RUFF

25X1
25X1

25X1

25X1

25X1

25X1

25X1

25X1

25X1
25X1

25X1

TOP SECRET CHESS RUFF



APRIL 1965

NATIONAL PHOTOGRAPHIC INTERPRETATION CENTER

ADDENDUM TO NPIC/



1. CONTINUING ANALYSIS OF MISSION 4016, 13-16 MAR 65, REVEALS THAT THE FOLLOWING COMOR TARGETS WERE COVERED BUT NOT INCLUDED IN THE OAK REPORTS FOR THIS MISSION:

KALININGRAD SAM SITE C32-3 UR 5456N 02002E



COMPLETED I-CONFIGURATION SA-3 SITE CONSISTS OF 4 REVETTED, PROBABLY OCCUPIED LAUNCH POSITIONS AND A REVETTED, PROBABLY OCCUPIED CENTRAL GUIDANCE AREA. NO ON-SITE SUPPORT FACILITY OBSERVED. HAZE PRECLUDES MEASUREMENT OF EQUIPMENT.



CHENG-CHOU AIRFIELD NORTHEAST CH 3447N 11343E

EXTREME WESTERN EDGE OF FIELD OBSERVED. AIRCRAFT -- 1 STRAIGHT-WING.



PING-FANG-TIEN AIRFIELD CH 4535N 12639E

IDENTIFICATION ONLY.



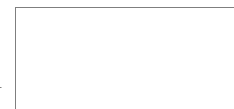
MARIENKHOF AIRFIELD UR 5452N 02011E

RUNWAY AND TAXIWAYS ARE SNOW COVERED. NO NEW CONSTRUCTION, SUSPECT ASM ACTIVITY, OR NUCLEAR STORAGE OBSERVED. HAZE AND SNOW PRECLUDE DETAILED INTERPRETATION.

- 1 -

TOP SECRET CHESS RUFF

GROUP 1
Excluded from automatic
downgrading and declassification



25X1

25X1

25X1

25X1

25X1

25X1

25X1

25X1

25X1

TOP SECRET CHESS RUFF



25X1
25X1

AIRCRAFT -- NONE OBSERVED.



25X1

DUDINKA SUSP CW MUNITIONS STOR AREA UR 6926N 08622E



25X1

AN ADDITIONAL 13 LARGE WAREHOUSES HAVE BEEN CONSTRUCTED SINCE [REDACTED] OCT 64. NO ELECTRONICS, COMMUNICATIONS, REVETMENTS, OR DISPOSAL PITS OBSERVED.

25X1



25X1

CHUEH-LO-WA MILITARY AREA TI 2853N 09729E



25X1

NO TOWN CAN BE LOCATED AT THE ABOVE COORDINATES; HOWEVER, DROWA GOMPA, WHICH CONTAINS A BARRACKS AREA, IS LOCATED APPROXIMATELY 5 MILES AWAY.



25X1

DROWA GOMPA ARMY BARRACKS TI 2850N 09725E



25X1

ON EAST BANK OF ZAVUL CHHU (RIVER) AT DROWA GOMPA. SMALL UNSECURED BARRACKS AND STORAGE AREA CONTAINS 2 ADMINISTRATION BUILDINGS, 7 BARRACKS, 2 MESSHALLS, 4 STORAGE BUILDINGS, AND 2 SUPPORT BUILDINGS. AREA APPEARS OCCUPIED. NO VEHICLES OBSERVED. ROADS IN AREA ARE IN GOOD CONDITION.



25X1

VALGA ARMY BARRACKS UR 5746N 02602E



25X1

THIS AREA CANNOT BE CONFIRMED AS MILITARY ON FAIR QUALITY, SNOW-COVERED PHOTOGRAPHY.



25X1



25X1

TOP SECRET CHESS RUFF



25X1
25X1

SREDNE-BELAYA ARMY BARRACKS UR 5042N 12802E



25X1

ON NE EDGE OF SREDNE-BELAYA. FACILITIES INCLUDE 1 T-SHAPED ADMINISTRATION BUILDING, 5 BARRACKS, 25 QUARTERS, 4 VEHICLE/EQUIPMENT STORAGE SHEDS, AN ATHLETIC FIELD, AND 25 SUPPORT BUILDINGS. A PROBABLY DOUBLE-SECURED STORAGE AREA IN THE NE PART OF THE INSTALLATION CONTAINS 2 LONG STORAGE BUILDINGS AND 5 SUPPORT BUILDINGS. AREA IS ACTIVE. TEN UNIDENTIFIED VEHICLES/PIECES OF EQUIPMENT OBSERVED.



25X1
25X1

FU-CHOU ARMY SUPPLY DEPOT CH 2605N 11919E

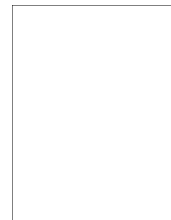


NE EDGE OF FU-CHOU. RAIL-SERVED SUPPLY DEPOT CONTAINS 11 LARGE STORAGE-TYPE BUILDINGS AND SEVERAL SMALL SUPPORT BUILDINGS. NO OPEN STORAGE OBSERVED. EIGHT PROBABLE CARGO TRUCKS OBSERVED.



25X1
25X1

TENG-CHUNG MILITARY COMPLEX CH 2502N 09829E



IDENTIFICATION ONLY.



25X1

CHIANG-KOU BARRACKS CH 2531N 11913E

3 NM NNE OF CHIANG-KOU. MILITARY INSTALLATION IN A RIVER VALLEY COMPRISES 4 SMALL BARRACKS AREAS WITH A TOTAL OF 18 BARRACKS, 3 MESSHALLS, 1 ASSEMBLY BUILDING, 5 ADMINISTRATION BUILDINGS, 20 SUPPORT BUILDINGS, AND A PARADE GROUND. TRAINING AREA CONTAINING EXTENSIVE TRENCHING OBSERVED SOUTH AND WEST OF BARRACKS AREAS. THREE TRUCKS OBSERVED. AREA APPEARS OCCUPIED. NO UNUSUAL MILITARY ACTIVITY OBSERVED.



25X1

TOP SECRET CHESS RUFF

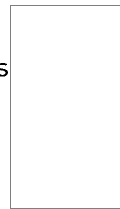


25X1
25X1



LIEN-CHIANG ARMY BARRACKS CH 2612N 11932E

NO MILITARY ACTIVITY OBSERVED AT THESE COORDINATES



25X1
25X1
25X1

HAN-CHIANG ARMY BARRACKS NORTH CH 2529N 11906E

5.5 NM NE OF PU-TIEN.
TWO ADJACENT AREAS CONTAIN A TOTAL OF 24 BARRACKS,
3 ADMINISTRATION BUILDINGS, 2 MESSHALLS, 10 SUPPORT
BUILDINGS, 1 PROBABLE VEHICLE/MAINTENANCE BUILDING,
AND A PARADE GROUND. NO OPEN STORAGE AREAS OBSERVED.
TWELVE PIECES OF UNIDENTIFIED EQUIPMENT OBSERVED.



KORCE ARMY BARRACKS SOUTH AL 4037N 02046E

PARTIALLY SECURED BARRACKS AREA ON SSW EDGE OF KORCE
CONTAINS 1 T-SHAPED PROBABLE ADMINISTRATION BUILDING,
2 U-SHAPED BARRACKS, 5 POSSIBLE BARRACKS, 5 PROBABLE
STORAGE BUILDINGS, 4 EQUIPMENT/VEHICLE SHEDS, 7 SUPPORT
BUILDINGS, 3 VEHICLE SHEDS, 11 PROBABLE CARGO TRUCKS,
6 PROBABLE ARTILLERY PIECES, AND AN AAA TRAINING AREA
WITH 3 OCCUPIED AND 2 UNOCCUPIED LIGHT AAA SITES, EACH
WITH 4 POSITIONS. AREA APPEARS COMPLETELY OCCUPIED.
NO TANKS OBSERVED.



25X1
25X1



KYUSTENDIL ARMY BARRACKS SW 1 BU 4216N 02240E

PARTIALLY SECURED BARRACKS AREA ON SW EDGE OF
KYUSTENDIL CONTAINS 1 E-SHAPED MULTISTORY BARRACKS/
ADMINISTRATION BUILDING, 6 BARRACKS, 4 STORAGE
BUILDINGS, 3 VEHICLE SHEDS, 14 SUPPORT BUILDINGS,



25X1
25X1



25X1

TOP SECRET CHESS RUFF



25X1

25X1

1 SWIMMING POOL, 1 ATHLETIC FIELD, 8 UNIDENTIFIED VEHICLES, AND AT LEAST 50 LONG UNIDENTIFIED VEHICLES/PIECES OF EQUIPMENT. AREA APPEARS COMPLETELY OCCUPIED. NO TANKS OBSERVED.



FU-CHOU COMPLEX

CH 2605N 11918E



25X1

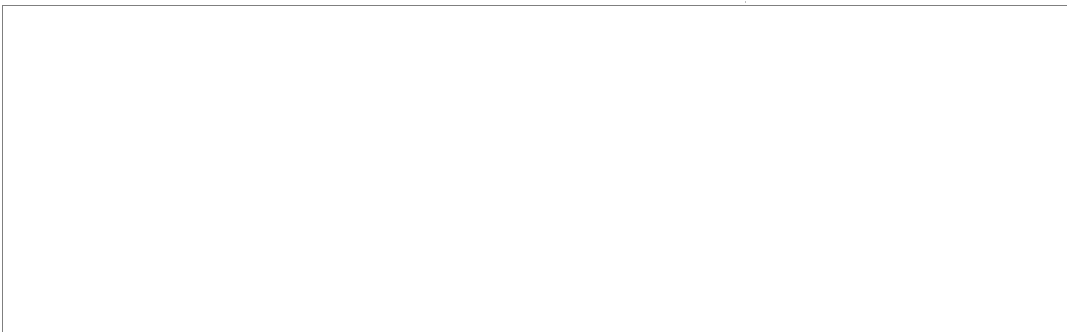
25X1

APPROXIMATELY 30 PERCENT (SEE SECTION) OF THE COMPLEX IS COVERED ON CLEAR, GOOD QUALITY PHOTOGRAPHY. PORTION OBSERVED INCLUDES SEVERAL LIGHT INDUSTRIES, MILITARY AND STORAGE AREAS, AND PORT FACILITIES. NO STACKS EMITTING SMOKE AND NO SIGNIFICANT ACTIVITY OBSERVED AT MAJOR INDUSTRIES.



25X1

2. THE FOLLOWING TARGETS WERE COMBINED UNDER ONE TARGET AND SHOULD HAVE BEEN REPORTED SEPARATELY AS FOLLOWS:



25X1

25X1

TOP SECRET CHESS RUFF



25X1

Page Denied



TOP SECRET CHESS RUFF



March 1965

25X1
25X1

NATIONAL PHOTOGRAPHIC INTERPRETATION CENTER

ERRATUM FOR NPIC



25X1


In Part IV of the OAK for Mission 4016, under COMOR No



(Naro-Fominsk Suspect AMM Phased-Array Radar), the

25X1

7th and 8th lines in paragraph 3 should read:

The suspect antenna is 770 ft long, 25 ft wide, and approximately 25 ft high. The suspect antenna is divided into 2 sections,  (correcting measurements with refined ephemeris data)

25X1

GROUP 1
Excluded from automatic
downgrading and declassification

TOP SECRET CHESS RUFF



25X1

TOP SECRET CHESS RUFF

4016 13-16 MARCH 1965

25X1
20X1

TABLE OF CONTENTS

PREFACE	2
TRACK OF MISSION	3
HIGHLIGHTS	7
MISSILES	17
AIR FACILITIES	27
NUCLEAR ENERGY	39
ELECTRONICS/COMMUNICATIONS	41
MILITARY ACTIVITY	45
INDEX OF COMOR TARGETS	66
ATTACHMENTS	APPENDIX

25X1

TOP SECRET CHESS RUFF

4016 13-16 MARCH 1965

25X1
ZSAI

OAK - PART VI
MISSION 4016

PREFACE

THIS IS THE SIXTH AND FINAL OAK REPORT ON MISSION 4016 AND PROVIDES INFORMATION ON THOSE COMMITTEE ON OVERHEAD RECONNAISSANCE (COMOR) TARGETS OBSERVED ON THE PHOTOGRAPHY.

TARGETS ARE ARRANGED IN THE OAK BY SUBJECT AND WITHIN EACH SUBJECT BY COMOR TARGET NUMBER. TARGETS OF OPPORTUNITY OBSERVED DURING THE OAK REPORTING PERIOD ARE LISTED NUMERICALLY UNDER THE APPROPRIATE SUBJECT AFTER THE LISTING OF COMOR TARGETS. LOCATIONS OF TARGETS IN THIS REPORT ARE INDICATED BY THE COUNTRY CODE PRECEDING THE COORDINATES.

SELECTED PHOTOGRAPHIC REFERENCES FOR EACH TARGET OBSERVED AND REPORTED FOLLOW THE DESCRIPTION OF THE TARGET. PASS NUMBERS ARE SUFFIXED WITH EITHER AN A FOR ASCENDING (SOUTH-TO-NORTH) OR D FOR DESCENDING (NORTH-TO-SOUTH). FRAMES ARE INDICATED BY THE LETTERS FR. THE LETTER F PRECEDING FRAME NUMBERS INDICATES THE FORWARD CAMERA, AND THE LETTER A INDICATES THE AFT CAMERA. ABSENCE OF THESE LETTERS INDICATES THAT THESE ARE FRAME AND INDEX NUMBERS. UNIVERSAL REFERENCE GRID (X-Y) COORDINATES ARE GIVEN IN PARENTHESIS AFTER THE FRAME TO WHICH THEY APPLY. THIS GRID IS IDENTIFIED AS UNIVERSAL GRID NO 1, FEB 64. SYMBOLS INDICATING CONDITIONS WHICH AFFECT THE APPEARANCE OF THE TARGET ON THE PHOTOGRAPHY ARE AS FOLLOWS -- C (CLEAR), H (HAZE), CS (CLOUD SHADOW), HC (HEAVY CLOUD COVER), SC (SCATTERED CLOUD COVER), SD (SEMIDARKNESS), O (OBLIQUITY), S (SNOW), PQ (POOR IMAGE QUALITY).

OAK RECIPIENTS ARE CAUTIONED THAT THE INITIAL SCAN OF THE PHOTOGRAPHY IS BEING ACCOMPLISHED IN A SHORT TIME AND PRIOR TO FINAL REFINEMENT OF EPHEMERAL DATA. CONSEQUENTLY, FUTURE DETAILED ANALYSIS MAY RESULT IN MINOR ALTERATIONS.

TOP SECRET CHESS RUFF

25X1

Page Denied

Next 3 Page(s) In Document Denied

Highlights

TOP SECRET CHESS RUFF

4016 13-16 MARCH 1965

HIGHLIGHTS

1. DLDVYANNAYA ICBM LAUNCH GROUP E

SITE E9 AND SITE E10 CAN NOW BE CONFIRMED.

2. TATISHCHEVO ICBM COMPLEX

THERE ARE 9 AREAS OF ACTIVITY WEST OF LAUNCH GROUP B. FIVE OF THESE APPEAR TO BE SIMILAR TO THE SITES IN LAUNCH GROUP B AND ARE EVALUATED AS PROBABLE LAUNCH SITES. ONE IS EVALUATED AS A POSSIBLE SITE AND THE REMAINING 3 ARE SUSPECT.

3. TATISHCHEVO ICBM LAUNCH GROUP A

LAUNCH SITE A4 HAS REMAINED VIRTUALLY UNCHANGED SINCE NOV 62 AND IS CONSIDERED TO HAVE BEEN INCORRECTLY IDENTIFIED. THEREFORE, THIS SITE IS BEING DROPPED FROM LAUNCH GROUP A. LAUNCH SITE A11 IS REDESIGNATED LAUNCH SITE A4.

4. TATISHCHEVO ICBM PROB LNCH GRP B

A TENTH PROBABLE SITE, DESIGNATED B10, IS LOCATED APPROXIMATELY 7 NM NORTH OF SITE B1 AND 3.4 NM NE OF SITE B9. THE SITE CONSISTS OF A SECURED AREA CONTAINING A PROBABLE SILO UNDER CONSTRUCTION.

5. LENINGRAD NORTHWEST PROB AMM LAUNCH COMPLEX

THE COMPLEX IS OBSERVED ON CLEAR, GOOD QUALITY, NON-STEREO PHOTOGRAPHY WITH GROUND SNOW COVER. THREE LAUNCH SITES ARE ACTIVE, WITH SEVERAL PROBABLE LAUNCHERS EMPLACED. THERE IS ACTIVITY BETWEEN THE MISSILE READY BUILDINGS AND THE LAUNCH POINTS, AND NUMEROUS VEHICLES/VANS/EQUIPMENT PARKED ALONG THE PERIMETER ROADS. UNIDENTIFIED RADAR AND ASSOCIATED VANS ARE OBSERVED AT 3 OF THE MOUNDED POSITIONS AT THE ELECTRONIC SITE (PREVIOUSLY REPORTED AS UNIDENTIFIED FACILITY) AT THE SE CORNER OF THE COMPLEX. THERE IS NO APPARENT CHANGE OR EVIDENCE OF ACTIVITY VISIBLE WITHIN THE ELECTRONICS AREA NORTH OF THE LAUNCH AREA. SIXTY VEHICLES/PIECES OF EQUIPMENT ARE PARKED IN AN AREA NW OF LAUNCH SITE A. APPROXIMATELY 20 MISCELLANEOUS VEHICLES ARE PARKED IN THE VICINITY OF THE LARGEST BUILDING IN THE SUPPORT AREA.

25X1

25X1

25X1

25X1

25X1

25X1

25X1

25X1

25X1

TOP SECRET CHESS RUFF

4016 13-16 MARCH 1965

25X1

6. NORILSK SAM SUPPORT FACILITY (MISSILE BONUS)

A COMPLETED SAM SUPPORT FACILITY IS NEWLY IDENTIFIED. IT CONSISTS OF 1 LARGE DRIVE-THROUGH BUILDING, 1 SMALL DRIVE-THROUGH BUILDING, AND 4 OTHER BUILDINGS SECURED BY A SOLID FENCE AND GUARD TOWERS.

7. VORONEZH AIRCRAFT ASSEMBLY PLANT 64

A PROBABLE FIDDLER IS OBSERVED -- THE FIRST TIME THIS TYPE OF AIRCRAFT HAS BEEN SEEN AT AN AIRCRAFT PLANT.

25X1

8. BERDICHEV REGIONAL MILITARY STOR INSTLN

MILITARY EQUIPMENT AND VEHICLES OBSERVED INCLUDE 48 PROBABLE SS 4/5 TRANSPORTERS, 2 PROBABLE SS 3/4 TRANSPORTERS, 10 POSSIBLE SS-5 TRANSPORTERS, 10 PROBABLE TRANSPORTERS APPROXIMATELY 65 FT LONG, 19 POSSIBLE TRANSPORTERS APPROXIMATELY 60 FT LONG, 184 POSSIBLE OXIDIZER/FUEL TRAILERS, 8 POSSIBLE SS-5 FUEL TRAILERS, 10 PROBABLE NOSECONE VANS, 26 SUPPORT VANS, 46 PROBABLE PRIME MOVERS, 12 POSSIBLE ERECTORS, 14 PROBABLE TRAILERS 55-60 FT LONG, 15 PROBABLE TRAILERS 40-45 FT LONG, 8 PROBABLE TRAILERS 30-35 FT LONG, 205 PROBABLE TRUCKS AND 151 UNIDENTIFIED VEHICLES/PIECES OF EQUIPMENT.

25X1

9. IGARKA AIRFIELD PROB TALL KING AW RADAR FAC

A PROBABLE TALL KING AW RADAR FACILITY IS NEWLY IDENTIFIED AT IGARKA AIRFIELD AT 67-26N 086-36E. THE FACILITY CONTAINS A CONTROL BUILDING WITH A PROBABLE TALL KING ANTENNA, A SUPPORT BUILDING, AND A POSSIBLE GENERATOR BUILDING.

25X1

10. MINSK/MACHULISHCHE AF PROB TALL KING AD HQ (ELECTRONICS BONUS)

A PROBABLE TALL KING AD HEADQUARTERS FACILITY AND 2 ASSOCIATED HF COMMUNICATIONS FACILITIES ARE NEWLY IDENTIFIED NEAR MINSK/MACHULISHCHE AIRFIELD AT 53-48N 027-34E.

11. H-3 AIRFIELD MILITARY AREA (MILITARY BONUS)

THIS MILITARY AREA IS LOCATED APPROXIMATELY 4 NM WEST OF H-3 AIRFIELD AND CONTAINS AT LEAST 600 TENTS, 80 TANKS/SELF PROPELLED GUNS, 18 PROBABLE ARTILLERY PIECES, 228 TRUCKS, 21 TRAILERS AND

25X1

[REDACTED] TOP SECRET CHESS RUFF [REDACTED]

4016 13-16 MARCH 1965

240 UNIDENTIFIED VEHICLES/PIECES OF EQUIPMENT.

STATUS OF COMOR TARGET READOUT

ONE HUNDRED AND NINETEEN TARGETS WERE OBSERVED DURING THE OAK REPORTING PERIOD AND ARE CONTAINED IN THIS OAK. A TOTAL OF 551 WERE REPORTED AND ARE LISTED IN THE INDEX AT THE CONCLUSION OF THIS REPORT. IN ADDITION, 16 BONUSES WERE REPORTED.

NOTE -- COMOR TARGETS OUTSIDE THE KH-7 SYSTEM ARE INDICATED BY THE ABSENCE OF THE M PREFIX. [REDACTED]

TABULAR SUMMARY

A RECAPITULATION OF SIGNIFICANT ACTIVITY IS PRESENTED IN THE FOLLOWING TABLES ON SUCCEEDING PAGES --

- TABLE 1 -- SOVIET ICBM DEPLOYMENT
- TABLE 2 -- SOVIET MRBM AND IRBM DEPLOYMENT
- TABLE 3 -- SAM AND AMM DEPLOYMENT
- TABLE 4 -- NUCLEAR ENERGY ACTIVITY
- TABLE 5 -- AIRCRAFT ACTIVITY
- TABLE 6 -- SUBMARINE ACTIVITY
- TABLE 7 -- DATE AND TIME OF PHOTOGRAPHIC PASSES

TOP SECRET CHESS RUFF [REDACTED]

25X1
25X1

25X1
25X1

25X1

TOP SECRET CHESS RUFF

MISSION 4016, 13-16 MARCH 1965

25X1
25X1

Table 1. Soviet ICBM Deployment

Complex	Launch Area																Total Soft Sites	Total Hard Sites	Total Single Sites	Total Launch Positions	Last Effective Coverage
	A	B	C	D	E	F	G	H	I	J	K	L	M	N	O						
Aleysk	HIC	HIC	HIC	HIC	HIC	M	HIC	M									6	6	6	6	Mar 65
Dombirovski	HIC	HIC	HIC	HIC	HIC	HIC	HIC	HIC									5	5	5	5	Mar 65
Drovyanaya	HB	HA	HA	HA	HA	HA	HA	HA	HA	HA	HA	HA	HA	HA	HA	HA	3	17(1a)	14(1a)	29(1a)	Feb 65
Gladkaya	HD	HD	HA	HA	HA	HA	HA	HA	HA	HA	HA	HA	HA	HA	HA	HA	2	10(4a)	9(4a)	16(4a)	Mar 65
Imeni Gastele	HIC	HIC	HIC	HIC	HIC	HIC	HIC	HIC									6	6	6	6	Feb 65
Itaka	HB	HB	HD														3			6	Feb 65
Karsaly	HIC	HIC	HIC	HIC	HIC	HIC	HIC	HIC	HIC	HIC	HIC	HIC	HIC	HIC	HIC	HIC	6	6	6	6	Mar 65
Kosiroma	HB	HB	HB	HB	HB	HB	HB	HB	HB	HB	HB	HB	HB	HB	HB	HB	6	1		15	Jan 65
Kozelsk	HIC	HIC	HIC	HIC	HIC	HIC	HIC	HIC	HIC	HIC	HIC	HIC	HIC	HIC	HIC	HIC	3	2		12	Oct 64
Novobirak	HB	HA	HA	HA	HA	HA	HA	HA	HA	HA	HA	HA	HA	HA	HA	HA	3	2		12	Mar 65
Olovyannaya	HA	HA	HA	HA	HA	HA	HA	HA	HA	HA	HA	HA	HA	HA	HA	HA	23	20	20	29	Mar 65
Omak	HB	HB	HB	HB	HB	HB	HB	HB	HB	HB	HB	HB	HB	HB	HB	HB	1			3	Mar 65
Perm	HB	HB	HB	HB	HB	HB	HB	HB	HB	HB	HB	HB	HB	HB	HB	HB	5	10(1a)	9(1a)	22(1a)	Jan 65
Plesetsk*	HA	HA	HA	HA	HA	HA	HA	HA	HA	HA	HA	HA	HA	HA	HA	HA	10*	1		19	Feb 65
Shadrinsk	HA	HA	HA	HA	HA	HA	HA	HA	HA	HA	HA	HA	HA	HA	HA	HA	3			9	Feb 65
Svobodnyy	HB	HB	HB	HB	HB	HB	HB	HB	HB	HB	HB	HB	HB	HB	HB	HB	7	1		17	Mar 65
Tatishchevo	HD	HD	HD	HD	HD	HD	HD	HD	HD	HD	HD	HD	HD	HD	HD	HD	25(1a)	25(1a)	25(1a)	26(1a)	Feb 65
Teykovo	HB	HB	HB	HB	HB	HB	HB	HB	HB	HB	HB	HB	HB	HB	HB	HB	6			12	Jan 65
Tyumen	HIC	HIC	HIC	HIC	HIC	HIC	HIC	HIC	HIC	HIC	HIC	HIC	HIC	HIC	HIC	HIC	2			4	Mar 65
Uzbur	HIC	HIC	HIC	HIC	HIC	HIC	HIC	HIC	HIC	HIC	HIC	HIC	HIC	HIC	HIC	HIC	11(2a)	11(2a)	11(2a)	11(2a)	Feb 65
Verkhnyaya Salda	HB	HA	HA	HA	HA	HA	HA	HA	HA	HA	HA	HA	HA	HA	HA	HA	7	2		20	Feb 65
Vedrovo	HB	HB	HB	HB	HB	HB	HB	HB	HB	HB	HB	HB	HB	HB	HB	HB	6	2		18	Mar 65
Yoshkar-Ola	HB	HB	HB	HB	HB	HB	HB	HB	HB	HB	HB	HB	HB	HB	HB	HB	6			12	Jan 65
Yurya	HA	HA	HA	HA	HA	HA	HA	HA	HA	HA	HA	HA	HA	HA	HA	HA	8	3		25	Mar 65
Zhangiz-Tobe	HIC	HIC	HIC	HIC	HIC	HIC	HIC	HIC	HIC	HIC	HIC	HIC	HIC	HIC	HIC	HIC	6	6	6	6	Mar 65

Deployment Total	146(9a)	120(7a)	345(9a)
Tyuratam MIC	10	16(7a)	43(7a)
Grand Total	156(9a)	136(7a)	388(9a)

*Includes Launch Points I-IV, complete, but does not include 2 SSBM pads at Launch Area F
 **Carried as Launch Group
 † Possible
 ○ Construction status (C=complete, L=late, M=mid, L=early)
 □ Newly identified
 Dropped From Listings
 Covered by current mission

25X1

TOP SECRET CHESS RUFF

MISSION 4016, 13-16 MARCH 1965

Table 2. Soviet MRBM and IRBM Deployment

Geographic Area	Soft MRBM Launch Areas	Soft IRBM Launch Areas	Hard MRBM Launch Areas	Hard IRBM Launch Areas	Total Launch Areas	Total Launch Positions
Western	121	11	18	11	161	631
Caucasus	3		2	3	8	29
Central Asia	2	3	1	3	9	33
Far Eastern	10	1		1	12	47
Totals	136	15	21	18	190	740

Totals do not include 73 fixed field-type sites with total of 267 launch positions and one launch facility at Sovetskaya Gavan.

Table 3. SAM and AMM Deployment

	Country											Totals			
	USSR	Albania	Bulgaria	Czechoslovakia	Hungary	Poland	Rumania	Yugo-Slavia	China	North Korea	Indonesia		Egypt	Cuba	India
SA-0	12														12
SA-1	56														56
SA-2	995*	1	19	23	16	30	18	3	16	2	5	21**	21	1	1219
SA-3	109				1										110
SAM support facilities	198	1	4	5	3	6	2	1	1	1	4	6			235
Probable AMM complexes	3														3
AMM/SAM complexes	2***														2

*Does not include 4 alternate sites, USSR. **Does not include 25 abandoned sites. ***Includes 1 probable complex.

Page Denied

Next 1 Page(s) In Document Denied

TOP SECRET CHESS RUFF

MISSION 4016, 13-16 MARCH 1965

TABLE 2. AIRCRAFT ACTIVITY

Previous Significant Aircraft Count

Observed this Mission 4016

Airfield	Last Effective Coverage	Previous Significant Aircraft Count													Observed this Mission 4016													
		BOMB	REYR	BOMBER	BLANDER	HOWYER	WANDYR	WILLOR	FIDLER	FITTER	FIMED	FINDOUT	FINDOUT	TOTALS	BOMB	REYR	BOMBER	BLANDER	HOWYER	WANDYR	WILLOR	FIDLER	FITTER	FIMED	FINDOUT	FINDOUT	TOTALS	
Aktubinsk-Vladimirovka	Jan 65	27		4*										25														
Alekseyevka	Dec 64	22												44														
Arskovo-Guedische	Oct 64	38												38														
Arktangelsk-Khodyn*	Aug 64	202											4	20														
Artem-Nord	Mar 65	29												30														
Baranovichi*	Oct 64	24	54											29														
Belaya	Jan 65	651												61														
Belaya-Tsekov	Mar 65	40												46														
Bobruysk*	Oct 64	34												35														
Borzya-NW	Feb 65	9												9														
Buklos*	Nov 64	371												37														
Chelopevka*	Mar 65	24	17											6	45													
Chernovo-Glin-koye	Feb 65	102												10										42	25			
Dolnoe	Jan 65	412	B B											43														
Engels*	Feb 65	33												33														
Gomel-Prityki	Oct 64	9	86											45			14	1										6
Kalinin*	Mar 65	24												24														
Kaliningrad-Proveron	Feb 65	29												29			6	31										37
Karantuk	Oct 64	29												29														
Kazan-A.C. Plo 22	Nov 64	5	11											26			42	291										24
Khond-East	Nov 64	4*	121*											0														
Mal-Yar	Nov 64	71												7														
Melitopol	Mar 64	5												2	30													
Minsk-Marchulische*	Oct 64													6			2442											15
Mitved	Oct 64	34												34			29											29
Moscow-Bamenskoye	Oct 64	6	15**	5	1									26														
Muzdok*	Oct 64													0														
Narzan	Oct 64	25												25														
Nikolayev-Kulbakovo	Nov 64	452												43														
Obshchinskoye	Oct 64	21												21														
Olenegorsk	Mar 65	57												57														
Ozha-Sudzhovsk*	Oct 64	35												35														
Ozern-Gorodovka	Oct 64	26												26														
Potopavinsk-Yelazovo	Jan 65	39												12	22													
Poltava*	Nov 64	61												61														
Priluki*	Oct 64	27												27														
Romansko-West	Jan 65	20												20														
Ryazan-Dagilevo	Mar 65	218	B B											21														
Saki	Sep 64	22	5											27														
Sarabov	Oct 64	24												24														
Svetitskoye	Jan 64	11	52											50														
Sudzha*	Oct 64	222	B B											22														
Sulizy*	Oct 64	27												27														
Spasik-Dalny-East	Mar 65	322												41			11							142				21
Surya*	Oct 64	50												50											20	10**		26
Tate	Jul 64	281												28														26
Ukraina*	Mar 65	16												42	44													45
Usarysk-Yordzhonka*	Sep 64	56												56														
Zhitomir-Skomozhki*	Jan 65	282	17											28														
TOTALS		29	25	1345	140	1							5	12	2	1485	41	222	21					29	12	20	15	304
		154	B B																									
			B B																									

*NUCLEAR WEAPONS STORAGE **POSSIBLE : PROBABLE **BADGER CASE I B A BEAR CASE I

25X1
25X1

25X1

Page Denied

Missiles

TOP SECRET CHESS RUFF

4016 13-16 MARCH 1965

MISSILES

PLESETSK ICBM LAUNCH AREA D (SITE 8) UR 6253N 04047E

LAUNCH AREA D (SITE 8) IS COVERED ON FAIR QUALITY, NON-STEREO PHOTOGRAPHY WITH HEAVY GROUND SNOW COVER. NO SIGNIFICANT CHANGE SINCE [REDACTED] MAR 65.

PLESETSK ICBM LAUNCH AREA E (SITE 7) UR 6251N 04034E

LAUNCH AREA E (SITE 7) IS PARTIALLY COVERED ON FAIR QUALITY, NON-STEREO PHOTOGRAPHY WITH GROUND SNOW COVER. ONLY THE LEFT LAUNCH PAD, MISSILE READY BUILDINGS, [REDACTED], AND A PORTION OF THE SITE SUPPORT FACILITY ARE COVERED BY THIS MISSION. NO SIGNIFICANT CHANGE OBSERVED AT ANY OF THESE SITE COMPONENTS SINCE [REDACTED] MAR 65.

PLESETSK SSM LAUNCH AREA F UR 6252N 04044E

LAUNCH AREA F IS COVERED ON GOOD QUALITY, NON-STEREO PHOTOGRAPHY. THE LAUNCH AREA SHOWS NO SIGNIFICANT CHANGE SINCE REPORTED COMPLETE ON [REDACTED] SEP 64. HOWEVER, ADDITIONAL DETAILS ARE APPARENT ON THE LARGER SCALE PHOTOGRAPHY. THERE IS A PROBABLE CANVAS-COVERED LAUNCHER/ERECTOR ON THE RIGHT (NORTH) PAD. THE LEFT PAD CONTAINS A SMALL UNIDENTIFIED OBJECT NEAR THE CENTER. THE PADS ARE APPROXIMATELY 90 FT WIDE, SEPARATED BY APPROXIMATELY 645 FT CENTER TO CENTER, AND ORIENTED GENERALLY EAST/WEST. THERE IS A BUILDING, APPROXIMATELY 105 X 40 FT, INBOARD OF EACH PAD, AND A LINEAR REVETMENT BETWEEN EACH OF THESE BUILDINGS AND ITS RESPECTIVE PAD. THE BUILDINGS ARE ACCESSIBLE BY VEHICLE FROM THE INBOARD SIDE BUT NO BUILDING ENTRANCES CAN BE IDENTIFIED. THERE ARE 2 BUILDINGS IN LINE AND CENTERED BETWEEN THE PADS. ONE MEASURES APPROXIMATELY 100 X 40 FT AND THE OTHER APPROXIMATELY 30 FT SQUARE. THE LARGER IS ACCESSIBLE BY ROAD BUT NO ENTRANCE INTO IT CAN BE IDENTIFIED. A TRACE, PROBABLY A FORMER DITCH, CONNECTS EACH PAD TO THE SMALLER BUILDING.

THERE ARE 2 PROBABLE EARTH-MOUNDED BUNKERS AND A SMALL BUILDING ON THE WEST SIDE OF THE LOOP ROAD SYSTEM. A

25X1
20A1

25X1

25X1

25X1

25X1

25X1

25X1

25X1

25X1

TOP SECRET CHESS RUFF

4016 13-16 MARCH 1965

PROBABLE MISSILE READY BUILDING, 135 X 30 FT, IS LOCATED IN THE SW PART OF THE LAUNCH AREA. ENTRANCES INTO THIS BUILDING COULD NEITHER BE CONFIRMED NOR NEGATED. FOUR OTHER SMALLER BUILDINGS ARE IN THE SW PART OF THE LAUNCH AREA. AT LEAST 15 VEHICLES/PIECES OF EQUIPMENT ARE PARKED ON AN APRON IN THE SE PORTION OF THE LAUNCH AREA. THEY RANGE FROM 100 FT TO 40 FT IN LENGTH.

PLESETSK ICBM PROB LAUNCH AREA G (SITE 9) UR 6253N 04050E

PROBABLE LAUNCH AREA G IS COVERED ON GOOD QUALITY, NON-STEREO PHOTOGRAPHY. THE AREA IS IN THE MID-STAGE OF CONSTRUCTION AND NEARLY IDENTICAL TO PROBABLE LAUNCH AREA H. IT IS LOCATED APPROXIMATELY 5.9 NM ESE OF THE COMPLEX SUPPORT FACILITY.

THE PROBABLE LAUNCH POSITION IS RAIL SERVED (THE RAILS FORM A WISHBONE CONFIGURATION) AND THE AREA IS SECURED. IT CONSISTS OF 3 STRUCTURES IN A LINE ON A NORTH/SOUTH AXIS. THESE STRUCTURES RANGE IN SIZE FROM 120 X 80 FT TO 80 X 55 FT. ON EITHER SIDE OF THE CENTER STRUCTURE AND SEPARATED BY APPROXIMATELY 500 FT ARE 2 ADDITIONAL STRUCTURES AT THE LOCATION OF THE 2 PREVIOUSLY REPORTED NOTCHED EXCAVATIONS. EACH OF THE STRUCTURES IN THE NOTCHED EXCAVATIONS ARE CONNECTED BY CONDUIT TO THE 3 STRUCTURES IN THE NORTH/SOUTH LINE. THE CONDUITS ARE ESTIMATED TO BE 5 TO 10 FT ACROSS. SNOW COVER AND LACK OF STEREO PHOTOGRAPHY PRECLUDE FURTHER INTERPRETATION.

(SEE ATTACHMENT)

PLESETSK ICBM PROB LAUNCH AREA H (SITE 10) UR 6253N 04051E

PROBABLE LAUNCH AREA H IS COVERED BY GOOD QUALITY, NON-STEREO PHOTOGRAPHY. THE AREA IS IN THE MID-STAGE OF CONSTRUCTION AND NEARLY IDENTICAL TO PROBABLE LAUNCH AREA G. IT IS LOCATED APPROXIMATELY 6.3 NM ESE OF THE COMPLEX SUPPORT FACILITY.

THE PROBABLE LAUNCH POSITION IS RAIL SERVED (THE RAILS FORM A WISHBONE CONFIGURATION) AND THE AREA IS SECURED. THE POSITION CONSISTS OF 3 STRUCTURES IN A LINE IN A

25X1
25X1

25X1

25X1

25X1

25X1

25X1

TOP SECRET CHESS RUFF

4016 13-16 MARCH 1965



25X1
25A1

NORTH/SOUTH AXIS. THESE STRUCTURES RANGE IN SIZE FROM 105 X 90 FT TO 75 X 85 FT. ON EITHER SIDE OF THE CENTER STRUCTURE AND SEPARATED BY APPROXIMATELY 500 FT ARE 2 ADDITIONAL STRUCTURES AT THE LOCATION OF THE 2 PREVIOUSLY REPORTED NOTCHED EXCAVATIONS. EACH OF THE STRUCTURES IN THE NOTCHED EXCAVATIONS ARE CONNECTED BY CONDUIT TO THE 3 STRUCTURES IN THE NORTH/SOUTH LINE. THE CONDUITS ARE ESTIMATED TO BE 5 TO 10 FT ACROSS. SNOW COVER AND LACK OF STEREO PHOTOGRAPHY PRECLUDE FURTHER INTERPRETATION.

(SEE ATTACHMENT)



OLOVYANNAYA ICBM LAUNCH AREA A (SITE 1) UR 5054N 11548E

NO SIGNIFICANT CHANGE SINCE [REDACTED] FEB 64.



OLOVYANNAYA ICBM LAUNCH AREA B (SITE 2) UR 5055N 11544E

NO SIGNIFICANT CHANGE SINCE [REDACTED] DEC 64. OBLIQUITY PRECLUDES A DETAILED INTERPRETATION.



OLOVYANNAYA ICBM LAUNCH AREA C (SITE 3) UR 5101N 11558E

NO SIGNIFICANT CHANGE SINCE [REDACTED] JAN 65. AN UNIDENTIFIED OBJECT APPEARS TO BE IN A VERTICAL POSITION ADJACENT TO THE CENTER SILO.



OLOVYANNAYA ICBM LAUNCH GRP D (SITES 4-19) UR 5104N 11604E

CONSTRUCTION CONTINUES AT LAUNCH GROUP D (SITES 4-13) BUT NO SIGNIFICANT CHANGES HAVE BEEN OBSERVED SINCE [REDACTED] JAN 65 EXCEPT AT SITE D7 (SITE 6) WHERE CONSTRUCTION CONTINUES ON THE STRUCTURE IN THE EXCAVATION APPROXIMATELY 500 FT EAST OF THE SILO. THIS IS NOW CONSIDERED TO BE A POSSIBLE CONTROL BUILDING AND ITS ROOF IS ABOUT AT GROUND LEVEL. SIX OF THE SITES;



25X1

25X1

25X1

25X1

25X1

25X1

25X1

25X1

25X1

25X1

TOP SECRET CHESS RUFF

4016 13-16 MARCH 1965

D2 (SITE 5), D4 (SITE 8), D6 (SITE 10), D8 (SITE 12), D9 (SITE 13), AND D10 (SITE 11) HAVE SMALL EXCAVATIONS NEAR THE SILO WHICH SEEM TO HAVE BEEN CUT INTO THE EARTH FILL PROVIDING THE LEVEL ACCESS TO THE SILO. THESE ARE POSSIBLY ENTRANCES TO THE SILOS OR AN UNDERGROUND STRUCTURE.

OLOVYANNAYA ICBM LAUNCH GROUP E

UR 5056N 11558E

CONSTRUCTION CONTINUES BUT NO SIGNIFICANT CHANGES ARE OBSERVED AT SITES E2 (SITE 14), E3 (SITE 15), AND E4 (SITE 16) SINCE JAN 65.

AT SITE E1 (SITE 17), 2 LONG, NARROW BUILDINGS HAVE BEEN ADDED JUST WEST OF THE SITE. THE BUILDING NEAREST THE SITE IS APPROXIMATELY TWICE AS LONG AS THE OTHER. NO OTHER SIGNIFICANT CHANGE OBSERVED SINCE JAN 65.

AT SITE E5 (SITE 19), A SMALL BUILDING IS PRESENT IN THE EXCAVATION OFF THE WEST LEG OF THE T-SHAPED LEVEL ACCESS. NO OTHER SIGNIFICANT CHANGE OBSERVED SINCE JAN 65.

AT SITES E6 (SITE 18) AND E7 (SITE 20), THE EARTHEN LEVEL ACCESS HAS BEEN EXTENDED OUTWARD ON BOTH SIDES OF THE SILO. ALSO AT E7 A BUILDING WITH AN EXTENSION IS PRESENT JUST OFF THE WEST END OF THE LEVEL ACCESS. AT SITE E8 (SITE 21), THE LEVEL ACCESS HAS BEEN EXTENDED TOWARD THE WEST. A SMALL BUILDING IS PRESENT TO THE NE OF THE SILO.

SITE E9 (SITE 22) CAN NOW BE CONFIRMED. A CIRCULAR SILO IS PRESENT IN AN EXCAVATION LOCATED IN AN L-SHAPED LEVEL ACCESS. A SMALL BUILDING IS SITUATED TO THE WEST OF THE ACCESS. NO SECURITY CAN BE IDENTIFIED.

SITE E10 (SITE 23) CAN ALSO BE CONFIRMED. A CIRCULAR SILO IS PRESENT IN A SHALLOW EXCAVATION. PRELIMINARY SCARRING AND GRADING FOR THE LEVEL ACCESS IS APPARENT. A SMALL BUILDING IS LOCATED WEST OF THE SILO. NO SECURITY HAS BEEN IDENTIFIED.

TOP SECRET CHESS RUFF

25X1

25X1

25X1

25X1

25X1

25X1

25X1

25X1

25X1

TOP SECRET CHESS RUFF

4016 13-16 MARCH 1965

TATISHCHEVO ICBM COMPLEX

UR 5140N 04534E

THERE ARE 9 AREAS OF ACTIVITY WEST OF LAUNCH GROUP B. FIVE OF THESE APPEAR TO BE SIMILAR TO THE SITES IN LAUNCH GROUP B AND ARE EVALUATED AS PROBABLE LAUNCH SITES. ONE IS EVALUATED AS A POSSIBLE SITE AND THE REMAINING 3 ARE SUSPECT. FOR IDENTIFICATION PURPOSES, THE 5 PROBABLE AND 1 POSSIBLE SITES ARE TENTATIVELY NUMBERED 1 THROUGH 6 (FROM SOUTH TO NORTH AND EAST TO WEST SINCE A CIRCULAR PATTERN IS NOT APPARENT). ALTHOUGH ALL AREAS ARE SIMILAR IN APPEARANCE, THE 3 SUSPECT AREAS HAD TOWERS IN THEM ON [REDACTED] DEC 64. IT CANNOT BE DETERMINED WHETHER OR NOT THE TOWERS ARE STILL IN PLACE ON THIS MISSION DUE TO LACK OF STEREO PHOTOGRAPHY.

SITE 1 (PROBABLE SITE) -- THE PROBABLE SITE IS LOCATED APPROXIMATELY 10 NM SOUTH OF THE COMPLEX SUPPORT FACILITY AND CONSISTS OF AN IRREGULARLY SHAPED SECURED AREA WITH AN EXCAVATION IN IT. THERE IS CONSIDERABLE TRACK ACTIVITY IN THE SNOW. THERE WAS NO EVIDENCE OF THIS SITE ON [REDACTED] OCT 64. FIRST EVIDENCE IS OBSERVED ON [REDACTED] DEC 64.

SITE 2 (PROBABLE SITE) -- THE SITE IS LOCATED APPROXIMATELY 15 NM SSW OF THE COMPLEX SUPPORT FACILITY AND CONSISTS OF AN IRREGULARLY SHAPED SECURED AREA WITH AN EXCAVATION IN IT. THERE IS CONSIDERABLE TRACK ACTIVITY IN THE SNOW. THERE WAS NO EVIDENCE OF THIS SITE ON [REDACTED] OCT 64. FIRST EVIDENCE IS OBSERVED ON [REDACTED] DEC 64.

SITE 3 (PROBABLE SITE) -- THE SITE IS LOCATED APPROXIMATELY 17 NM SW OF THE COMPLEX SUPPORT FACILITY. IT CONSISTS OF AN IRREGULARLY SHAPED SECURED AREA WITH AN EXCAVATION IN IT. THERE IS CONSIDERABLE TRACK ACTIVITY IN THE SNOW. THERE WAS NO EVIDENCE OF THIS SITE ON [REDACTED] OCT 64. FIRST EVIDENCE IS OBSERVED ON [REDACTED] DEC 64.

SITE 4 (PROBABLE SITE) -- THE SITE IS LOCATED APPROXIMATELY 15.5 NM SW OF THE COMPLEX SUPPORT FACILITY. IT CONSISTS OF AN IRREGULARLY SHAPED SECURED AREA WITH AN EXCAVATION IN IT. THERE IS CONSIDERABLE TRACK ACTIVITY IN THE SNOW. THERE WAS NO EVIDENCE OF THE SITE ON [REDACTED] OCT 64. FIRST EVIDENCE IS OBSERVED ON [REDACTED] DEC 64.

SITE 5 (PROBABLE SITE) -- THE SITE IS LOCATED

25X1

25X1

25X1

25X1
25X1

25X1
25X1

25X1
25X1

25X1

25X1

TOP SECRET CHESS RUFF

4016 13-16 MARCH 1965



25X1

APPROXIMATELY 19 NM WSW OF THE COMPLEX SUPPORT FACILITY. IT CONSISTS OF AN IRREGULARLY SHAPED SECURED AREA WITH A PROBABLE EXCAVATION IN IT. THERE WAS NO EVIDENCE OF THE SITE ON [REDACTED] OCT 64. FIRST EVIDENCE IS OBSERVED ON [REDACTED] DEC 64.

25X1

SITE 6 (POSSIBLE SITE) -- THE SITE CONSISTS OF A PARTIAL LOOP ROAD WITH AN EXCAVATION WITHIN THE LOOP. THERE WAS NO EVIDENCE OF THE SITE ON [REDACTED] OCT 64. FIRST EVIDENCE IS OBSERVED ON [REDACTED] DEC 64.

25X1
25X1

PHOTOGRAPHIC REFERENCES FOR SIGNIFICANT ITEMS ON PASS

- SITE 1 (75-2)
- SITE 2 (65-11)
- SITE 3 (61-14)
- SITE 4 (65-16)
- SITE 5 (60-20)
- SITE 6 (68-20)
- SUSPECT AREA (68-4)
- SUSPECT AREA (61-6)
- SUSPECT AREA (65-8)

25X1

(SEE ATTACHMENT)



25X1

TATISHCHEVO ICBM LAUNCH GROUP A

UR 5148N 04539E



25X1

LAUNCH GROUP A IS COVERED BY NON-STEREO PHOTOGRAPHY WITH GROUND SNOW COVER.

LAUNCH SITE A1 (SITE 1) -- TRACK ACTIVITY IN THE SNOW INDICATES CONTINUED CONSTRUCTION IN PROGRESS ON THE STRUCTURE IN AN EXCAVATION NEAR THE SILO. THIS STRUCTURE IS EVALUATED AS A POSSIBLE CONTROL FACILITY. NO OTHER SIGNIFICANT CHANGE SINCE [REDACTED] DEC 64.

25X1

LAUNCH SITES A2 (SITE 2), A5 (SITE 5), A7 (SITE 7), A8 (SITE 8), A9 (SITE 9), A10 (SITE 10), AND A11 (SITE 11) SHOW NO SIGNIFICANT CHANGE SINCE [REDACTED] DEC 64.

25X1

LAUNCH SITES A3 (SITE 3) AND A6 (SITE 6) -- EACH SITE NOW HAS A T-SHAPED, EARTH-MOUNDED, LEVEL ACCESS TO THE SILO. THE SILO IS IN THE LEG OF THE T AND ORIENTED IN A NW/SE DIRECTION. THE SILOS APPEAR TO BE BACKFILLED AND HAVE SQUARE PROBABLE COVERS OVER THEM. THE DETAILS

25X1



TOP SECRET CHESS RUFF

4016 13-16 MARCH 1965



25X1

OF THE COVERS CANNOT BE DISCERNED.

LAUNCH SITE A4 (SITE 4) -- THIS SITE HAS REMAINED VIRTUALLY UNCHANGED SINCE [REDACTED] NOV 62 AND IS CONSIDERED TO HAVE BEEN INCORRECTLY IDENTIFIED. ALSO, THE SPACING OF THIS SITE WITH RESPECT TO ADJOINING SITES IS INCONSISTENT WITH THE SPACING OF THE OTHER SITES IN THIS LAUNCH GROUP. THEREFORE, THIS SITE IS BEING DROPPED FROM LAUNCH GROUP A. LAUNCH SITE A11 IS REDESIGNATED LAUNCH SITE A4.

25X1

(SEE ATTACHMENT)



25X1

TATISHCHEVO ICBM LNCH GRP B

UR 5133N 04530E



25X1

A TENTH PROBABLE SITE, DESIGNATED B10, IS LOCATED APPROXIMATELY 7 NM NORTH OF SITE B1 (SITE 14) AND 3.4 NM NE OF SITE B9 (SITE 21). THE SITE CONSISTS OF A SECURED AREA CONTAINING A PROBABLE SILO UNDER CONSTRUCTION. THERE WAS NO EVIDENCE OF THE SITE ON [REDACTED] JUN 64, AND FIRST EVIDENCE IS OBSERVED ON SEP 64. THE REMAINDER OF LAUNCH GROUP B, SITES B1 THROUGH B9 (SITES 12-17, 19-21), CANNOT BE CONFIRMED, BUT ALL SHOW ACTIVITY IN THE SNOW IN THE VICINITY OF AN EXCAVATION, AND SECURITY FENCING HAS BEEN IDENTIFIED AT ALL EXCEPT SITES B2 (SITE 12) AND B7 (SITE 13).

25X1

(SEE ATTACHMENT)



25X1

LENINGRAD NORTHWEST PROB AMM LAUNCH CPLX

UR 6027N 02944E



25X1

COMPLEX IS OBSERVED ON CLEAR, GOOD QUALITY, NON-STEREO PHOTOGRAPHY WITH GROUND SNOW COVER. THE COMPLEX IS ACTIVE, WITH TRACKAGE EVIDENT WITHIN THE LAUNCH AREA, THE SUPPORT AND BARRACKS AREAS, AND WITHIN THE ELECTRONIC SITE (PREVIOUSLY DESIGNATED AS AN UNIDENTIFIED FACILITY) AT THE SOUTHEAST CORNER OF THE COMPLEX. TRACKAGE IS ALSO VISIBLE WITHIN A VEHICLE PARK NW OF THE LAUNCH AREA.

PROBABLE LAUNCHERS ARE EMPLACED AT ALL OF THE LAUNCH POINTS WITHIN LAUNCH SITES C AND E AND AT LEAST 3 OF

25X1



TOP SECRET CHESS RUFF

4016 13-16 MARCH 1965

THE POSITIONS WITHIN LAUNCH SITE D. NO LAUNCHERS HAVE BEEN EMPLACED WITHIN SITES A AND B. A WEDGE-SHAPED PATTERN EXTENDS FROM 1 END OF EACH MISSILE READY BUILDING TO THE LAUNCH POINTS WITHIN LAUNCH SITE D. UNIDENTIFIED EQUIPMENT IS OBSERVED ON SOME OF THESE PATTERNS. SEGMENTS OF SIMILAR PATTERNS APPEAR AT 4 OF THE LAUNCH POSITIONS AT LAUNCH SITE E. THE PROBABLE LAUNCHERS RESEMBLE IN APPEARANCE AND SIZE THOSE OBSERVED AT SOME OF THE LAUNCH POSITIONS AT SITES 3 AND 4, LAUNCH COMPLEX A, SARY-SHAGAN ANTIMISSILE TEST CENTER (SSATC) ON [REDACTED] JAN 65.

UNIDENTIFIED EQUIPMENT IS POSITIONED NEAR THE ENTRANCE TO THE LAUNCH SITE CONTROL BUILDINGS AT ALL 5 LAUNCH SITES. VANS/VEHICLES OR EQUIPMENT ARE PARKED ALONG THE PERIMETER ROADS OPPOSITE EACH MISSILE READY BUILDING AT LAUNCH SITES D AND E. ONE, AND IN SOME CASES 2, PIECES OF UNIDENTIFIED EQUIPMENT ARE SITUATED IN THE SAME POSITION WITH RESPECT TO EACH OF THESE BUILDINGS. FIVE VANS AND 1 VEHICLE ARE LOCATED ON THE PERIMETER ROAD AT LAUNCH POSITION C-6. AT LEAST 4 VEHICLES/VANS OR PIECES OF EQUIPMENT ARE LOCATED ON THE ROAD AT LAUNCH POSITION D-1, 1 EACH AT D-2, D-3, AND D-4, 2 AT D-5 AND AT LEAST 5 AT D-6. THREE ARE LOCATED AT LAUNCH POSITIONS E-1 AND E-2, 4 EACH AT E-3 AND E-4, THREE AT E-5, AND TWO AT E-6. SEVERAL OF THESE PIECES OF EQUIPMENT ARE SIMILAR IN APPEARANCE AND SIZE TO THOSE AT THE LAUNCH POSITIONS.

THE CURRENT LARGE SCALE PHOTOGRAPHY REVEALS 60 VEHICLES/EQUIPMENT, [REDACTED] PARKED IN 4 ROWS IN A CLEARED AREA NW OF LAUNCH SITE A. THERE WAS NO ACTIVITY AT THIS LOCATION ON [REDACTED] MAY 64 AND 4 BUILDINGS WERE OBSERVED THERE ON [REDACTED] JUN 64. A REVIEW OF THE SMALLER SCALE PHOTOGRAPHY REVEALS THAT THE VEHICLES/EQUIPMENT WERE NOT AT THAT LOCATION IN JUN 64 AND THAT THE MAJORITY OF THEM WERE PRESENT ON [REDACTED] OCT 64, ALTHOUGH NOT IDENTIFIABLE AS SUCH ON THAT PHOTOGRAPHY. A FIFTH BUILDING WAS ALSO ADDED BETWEEN JUNE AND OCTOBER 1964. TWO ADDITIONAL VEHICLES ARE PARKED JUST SOUTH OF THE ROW OF BUILDINGS. THERE IS TRACKAGE IN THE SNOW WITHIN THIS AREA, AND LEADING FROM IT TO THE LAUNCH AREA.

THE PREVIOUSLY REPORTED UNIDENTIFIED FACILITY AT THE SE CORNER OF THE COMPLEX IS NOW IDENTIFIED AS AN ELECTRONIC SITE SINCE RADAR EQUIPMENT IS PRESENT ON 3 OF THE MOUNDS. THE MOUNDED POSITIONS ARE DESIGNATED 1

25X1

25X1

25X1
25X1

25X1
25X1

25X1

25X1

TOP SECRET CHESS RUFF

4016 13-16 MARCH 1965

THROUGH 5 IN A CLOCK-WISE DIRECTION STARTING WITH THE POSITION EAST OF THE SITE ENTRANCE. UNIDENTIFIED RADAR IS SITUATED ON THE MOUNDS AT POSITIONS 1, 3, AND 4 AND WAS FIRST OBSERVED ON [REDACTED] MAR 65. THREE VANS ARE ALSO LOCATED ON POSITION 4. VANS ARE POSITIONED AT THE BASE OF THE MOUNDS AT POSITIONS 1 AND 3. THE REVETTED CENTRALLY LOCATED AREA CONTAINS AT LEAST 3 VANS, EACH MEASURING APPROXIMATELY 20 X 10 FT, A BUILDING 35 X 25 FT, A SMALLER RECTANGULAR STRUCTURE, AND POSSIBLY ADDITIONAL UNIDENTIFIED EQUIPMENT. GROUND SCARS IN THE SNOW ARE OBSERVED LEADING FROM POSITIONS 3 AND 4 TO THE VICINITY OF THE REVETTED CENTRAL AREA, ANOTHER LEADING FROM THE CENTRAL AREA TO A POINT JUST WEST OF LAUNCH SITE C, AND A GROUND SCAR ALSO EXTENDS FROM POSITION 1 TOWARD LAUNCH SITE C. THE LATTER SCAR APPEARS TO TERMINATE AT THE SECURITY FENCING ENCLOSING THE COMPLEX PROPER.

AT LEAST 20 MISCELLANEOUS VEHICLES/EQUIPMENT ARE PARKED JUST SOUTH OF THE LARGEST BUILDING IN THE SUPPORT AREA. THREE AND POSSIBLY 4 PIECES OF UNIDENTIFIED EQUIPMENT ARE PARKED EAST OF THE BUILDING. THERE IS NO TRACKAGE IN THE SNOW NEAR THE ENTRANCES TO THE PROBABLE COMPLEX CONTROL CENTER OR ALONG THE ROADS LEADING TO THE ELECTRONIC FACILITIES AT THE OUTRIGGER POSITIONS. NO CHANGES OR ADDITIONS ARE OBSERVED AT THESE FACILITIES. THE SA-3 SAM SITE WITHIN THE COMPLEX IS OCCUPIED.

(SEE ATTACHMENT)

LENINGRAD SAM SITE C31-2

UR 6014N 02934E

COMPLETED SA-2 SAM SITE 28 NM NW OF LENINGRAD AT 60-14-00N 029-34-55E. THE REVETTED LAUNCH AREA IS OCCUPIED WITH 6 LAUNCHERS, EACH MEASURING APPROXIMATELY 20 FT. THE PRESENCE OF MISSILES IS UNDETERMINED DUE TO SNOW. CENTRAL GUIDANCE AREA IS REVETTED, OCCUPIED AND CONTAINS A POSSIBLE FAN SONG RADAR [REDACTED], 3 PROBABLE VANS [REDACTED], 2 POSSIBLE VANS [REDACTED] FT, AND 3 UNIDENTIFIED OBJECTS [REDACTED] AND [REDACTED]

THE SITE SUPPORT AREA IS 500 FT NE OF THE LAUNCH AREA AND CONTAINS 4 LARGE AND AT LEAST 6 SMALL BUILDINGS, 2 VEHICLES [REDACTED] 3 POSSIBLE MISSILE [REDACTED]

TOP SECRET CHESS RUFF

25X1

25X1

25X1

25X1

25X1

25X1

25X1

25X1

25X1

[REDACTED] TOP SECRET CHESS RUFF [REDACTED]

4016 13-16 MARCH 1965

TRANSPORTERS [REDACTED] AND
1 POSSIBLE MISSILE TRANSPORTER/PRIME MOVER [REDACTED]
NO EVIDENCE OF NUCLEAR STORAGE OBSERVED. THE ENTIRE
AREA IS SECURED.

[REDACTED]
NORILSK SAM SUPPORT FACILITY

UR 6921N 08811E BONUS 1

2.7 NM NORTH OF NORILSK.
COMPLETED SAM SUPPORT FACILITY OF IRREGULAR
CONFIGURATION (DUE TO TERRAIN LIMITATIONS) CONSISTS OF
1 LARGE DRIVE-THROUGH BUILDING, 1 SMALL DRIVE-THROUGH
BUILDING, AND 4 OTHER BUILDINGS SECURED BY A SOLID
FENCE AND GUARD TOWERS. AT LEAST 15 MISSILE
TRANSPORTERS ARE PARKED ADJACENT TO THE SOUTHERN EDGE
OF THE FACILITY.

(SEE ATTACHMENT)
[REDACTED]

TOP SECRET CHESS RUFF [REDACTED]

25X1
25X1

25X1
25X1

25X1

25X1

25X1

**Air
Facilities**

TOP SECRET CHESS RUFF

4016 13-16 MARCH 1965

AIR FACILITIES

CHERVONO-GLINSKOYE AIRFIELD

UR 4557N 02923E

NO NEW CONSTRUCTION OR ASM ACTIVITY OBSERVED.

AIRCRAFT -- 8 BADGER AND 1 BEAGLE ON HARDSTANDS ALONG NORTHERN SECTION OF LOOP TAXIWAY, 10 FISHBED, 2 POSSIBLE FISHBED, 4 FLASHLIGHT/FIREBAR, 1 POSSIBLE FLASHLIGHT/FIREBAR, 5 FAGOT/FRESCO, AND 2 COLT/CREEK ON PARKING APRONS, AND 2 POSSIBLE HOUND ON HARDSTANDS ALONG SOUTHERN SECTION OF LOOP TAXIWAY.

SPASSK-DALNIY AIRFIELD EAST

UR 4437N 13253E

RUNWAY AND TAXIWAYS ARE CLEARED OF SNOW. NO NEW CONSTRUCTION OBSERVED. THE ILS CONSISTS OF GLIDE PATH TRANSMITTING ANTENNAS WITH LOCALIZERS CLOSE TO EACH RUNWAY END, AND INNER AND OUTER MARKER BEACONS EXTENDING OFF BOTH RUNWAY ENDS. FOUR STACK AND FIXED SMALL CROSS RADARS ARE CENTRALLY LOCATED IMMEDIATELY WEST OF THE SW END OF THE RUNWAY. A GCA SYSTEM CONSISTING OF A PAR VAN, DISCONES, CROSS FORK, SMALL CROSS, AND AN UNIDENTIFIED SURVEILLANCE RADAR IS SITUATED BETWEEN THE RUNWAY AND TAXIWAY.

THE PREVIOUSLY REPORTED SUSPECT ASM SITE 2 NM SE APPEARS TO BE CONVENTIONAL STORAGE. NO ASM OR NUCLEAR WEAPONS FACILITIES OBSERVED.

AIRCRAFT -- 11 BADGER, 14 PROBABLE FITTER, 6 POSSIBLE FITTER, 6 FAGOT/FRESCO, AND 1 SMALL STRAIGHT-WING ON PARKING APRONS AND HARDSTANDS ALONG LOOP TAXIWAY SE OF RUNWAY AND 12 POSSIBLE FAGOT/FRESCO ON NORTH LINK TAXIWAY.

ANADYR/LENINKA AIRFIELD

UR 6442N 17742E

NO NEW CONSTRUCTION ACTIVITY OBSERVED.

AIRCRAFT -- 4 BADGER AND 11 LARGE SWEEP-WING FIGHTER ON PARKING APRON SW OF NNE/SSW RUNWAY, 7 FAGOT/FRESCO, 1 HOUND, AND 1 CAB ON WEST HALF OF NNW/SSE RUNWAY, 1 COOT

25X1
25X1

25X1

25X1

25X1

25X1

TOP SECRET CHESS RUFF

4016 13-16 MARCH 1965

AND 3 CRATE ON EAST HALF OF NNW/SSE RUNWAY, AND 1 CAT/CUB ON NNE/SSW RUNWAY.

TIKSI AIRFIELD

UR 7141N 12853E

NO APPARENT CHANGE IN FACILITIES SINCE APR 63. RUNWAY IS CLEARED OF SNOW.

AIRCRAFT -- 3 COOT, 5 CAB, 4 CRATE, 4 COLT, 1 FLASHLIGHT/FIREBAR, 1 FAGOT/FRESCO, 15 SMALL SWEEP-WING, AND 2 HOUND ALONG PARKING APRON, AND 5 DERELICT (3 COLT, 1 CAB, AND 1 POSSIBLE COLT) PARKED 2,000 FT FROM SOUTH END OF RUNWAY.

RASHID AIRFIELD

IQ 3316N 04429E

NO NEW CONSTRUCTION OR ADDITIONAL FACILITIES SINCE APR 63. RUNWAY, TAXIWAY AND PARKING APRONS APPEAR IN GOOD CONDITION. NO AIR DEFENSES OR SAM STORAGE FACILITIES OBSERVED.

AIRCRAFT -- 7 FISHBED, 2 PROBABLE FARMER, 1 FAGOT/FRESCO, 1 PROBABLE VENOM, 2 CAT/CUB, 1 BRISTOL-TYPE 170, 1 HERON, 4 PROBABLE DEVON, 3 COLT, 9 HOUND, AND 2 SMALL STRAIGHT-WING.

(SEE ATTACHMENT)

RAMAT DAVID AIRFIELD

IS 3239N 03510E

1 NM SW OF RAMAT DAVID. TWO SERVICEABLE ASPHALT RUNWAYS -- 7,800 X 150 FT NW/SE WITH A CONCRETE PARALLEL TAXIWAY AND 9,000 X 150 FT E/W.

FACILITIES INCLUDE 4 CONCRETE PARKING APRONS, 19 REVETTED HARDSTANDS, 2 ALERT APRONS (1 AT EACH END OF THE E/W RUNWAY), 5 HANGARS, 8 PROBABLE AIRCRAFT MAINTENANCE BUILDINGS WITH ASSOCIATED PARKING APRONS, 10 PROBABLE EARTH-COVERED HANGARETTES, 6 REVETTED

TOP SECRET CHESS RUFF

25X1
25X1

25X1
25X1

25X1

25X1

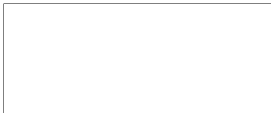
25X1

25X1

25X1

TOP SECRET CHESS RUFF

4016 13-16 MARCH 1965



25X1
25X1

HARDSTANDS, 6 REVETTED DRIVE-THROUGH BUILDINGS, 2 PROBABLE POL STORAGE AREAS, AND NUMEROUS SUPPORT BUILDINGS. A PROBABLE AMMUNITION STORAGE AREA NORTH OF THE WEST END OF THE E/W RUNWAY CONTAINS 20 STORAGE BUILDINGS (13 ARE EARTH COVERED). RUNWAYS, TAXIWAYS, AND ALL PARKING AREAS APPEAR TO BE IN GOOD CONDITION. NO DEFENSES OR ELECTRONIC FACILITIES OBSERVED.

AIRCRAFT -- 12 MIRAGE III, 11 VAUTOUR, 5 MYSTERE, 1 NORATLAS, 4 METEOR MK-8, 5 SMALL STRAIGHT-WING, AND 1 HELICOPTER.



25X1
25X1

TIKSI AIRFIELD WEST

UR 7141N 12842E

AIRFIELD IS COVERED ON GOOD QUALITY, SNOW COVERED PHOTOGRAPHY.

FACILITIES INCLUDE 1 PROBABLE BARRACKS BUILDING, 1 STORAGE BUILDING, AND 4 SUPPORT BUILDINGS. A PROBABLE GCA/ILS SITE IS LOCATED BETWEEN THE RUNWAY AND TAXIWAY, AND 5 PROBABLE POL STORAGE AREAS ARE LOCATED ADJACENT TO THE TAXIWAY. SIX UNIDENTIFIED VEHICLES OBSERVED IN THE SUPPORT AREA AND 13 UNIDENTIFIED VEHICLES ARE LOCATED AROUND THE AIRCRAFT ON THE TAXIWAY.

AIRCRAFT -- -- 2 BISON. PASS -- NONE OBSERVED.



25X1
25X1

25X1

VORONEZH AIRCRAFT ASSEMBLY PLANT 64

UR 5138N 03915E



25X1

PLANT CONTAINS 1 LARGE SUB-ASSEMBLY BUILDING WITH A FINAL ASSEMBLY SECTION, A SMALLER SUB-ASSEMBLY BUILDING, A LARGE FINAL ASSEMBLY BUILDING, AND APPROXIMATELY 25 SUPPORT BUILDINGS. A BUILDING IS OBSERVED TO BE NEARING COMPLETION ON THE WEST SIDE OF THE PLANT, AND CONSTRUCTION IS CONTINUING AT THE EAST SIDE OF THE LARGE SUB-ASSEMBLY BUILDING.

A PROBABLE FIDDLER IS OBSERVED IN AN AIRCRAFT TEST REVETMENT. THIS IS THE FIRST TIME A FIDDLER AIRCRAFT HAS BEEN OBSERVED AT AN AIRCRAFT PLANT. THIS PLANT IS A KNOWN PRODUCER OF CAT/CUB AIRCRAFT AND 13 ARE VISIBLE



25X1

TOP SECRET CHESS RUFF

4016 13-16 MARCH 1965

IN THE PLANT AREA.

(SEE ATTACHMENT)

HAI-KOU AIRFIELD

CH 2001N 11021E

1 NM SOUTH OF HAI-KOU.
6,600 X 200 FT E/W CONCRETE RUNWAY, SERVICEABLE.

FACILITIES INCLUDE CONCRETE PARALLEL TAXIWAY WITH 4 CROSSOVERS, 1 PARALLEL LOOP TAXIWAY ADJACENT TO PARALLEL TAXIWAY WITH 21 REVETTED HARDSTANDS, 2 CONCRETE ALERT APRONS, 2 CONCRETE PARKING APRONS, 2 LARGE HANGAR APRONS, 3 HANGARS, 1 OPERATIONS BUILDING WITH CONTROL TOWER, 1 FIRING BUTT, A POL STORAGE AREA, AND NUMEROUS SUPPORT BUILDINGS. NO RADAR FACILITIES OBSERVED.

AIRCRAFT -- 2 PROBABLE FARMER.

FU-CHOU/NAN-TAI AIRFIELD

CH 2600N 11919E

NO CHANGES OR NEW CONSTRUCTION SINCE SEP 64 ON GOOD QUALITY PHOTOGRAPHY.

AIRCRAFT -- 2 FARMER, 23 FAGOT/FRESCO, 10 BEAST, AND 1 PROBABLE NET-COVERED UNIDENTIFIED AIRCRAFT.

YIN-CHUAN AIRFIELD

CH 3830N 10608E

NO APPARENT CHANGE IN FACILITIES SINCE NOV 64.

AIRCRAFT -- NONE OBSERVED.

25X1

25X1

25X1

25X1

25X1

25X1

25X1

25X1

25X1

TOP SECRET CHESS RUFF

4016 13-16 MARCH 1965

HO-TIEN AIRFIELD

CH 3702N 07952E

AIRFIELD APPEARS TO BE STILL UNDER CONSTRUCTION. HEAVY HAZE PRECLUDES FURTHER INTERPRETATION.

AIRCRAFT -- NONE OBSERVED.

AL HUDAYDAH AIRFIELD

YE 1449N 04257E

NO NEW CONSTRUCTION OBSERVED. A SECURED ELECTRONIC FACILITY CONSISTING OF 1 BUILDING AND 3 STICK MASTS IS ON THE COAST WEST OF THE SOUTHERN END OF THE RUNWAY. RUNWAY IS SERVICEABLE. AIR DEFENSES CONSIST OF AN OCCUPIED 2-GUN AAA SITE NW OF THE NORTHERN END OF THE RUNWAY.

AIRCRAFT -- NONE OBSERVED.

DAMASCUS AIRFIELD

SY 3328N 03613E

4 NM SW OF DAMASCUS. FIELD IS ENCLOSED BY A PERIMETER FENCE AND CONTAINS 2 SERVICEABLE ASPHALT RUNWAYS -- ONE 8,450 X 195 FT NE/SW WITH CONCRETE ENDS AND THE OTHER 4,260 X 160 FT NW/SE WITH A TURNING CIRCLE AT THE SE END.

FACILITIES INCLUDE 3 ASPHALT LINK TAXIWAYS, 1 SEMI-CIRCULAR ASPHALT AND CONCRETE PARKING APRON, 1 CONCRETE ALERT APRON AT THE NE END OF THE NE/SW RUNWAY, 4 AIRCRAFT HANGARETTES UNDER CONSTRUCTION, 4 LARGE HANGARS, 8 PROBABLE BARRACKS, AND AN AIRCRAFT GRAVEYARD LOCATED NORTH OF CENTER OF THE NE/SW RUNWAY. A PROBABLE AMMUNITION STORAGE AREA SOUTH OF THE SW END OF THE NE/SW RUNWAY CONTAINS 7 PROBABLY REVETTED BUILDINGS. DEFENSES INCLUDE 2 OCCUPIED 6-GUN AAA SITES.

AIRCRAFT -- 5 PROBABLE FARMER, 10 PROBABLE FAGOT/FRESCO, 1 PROBABLE COMET, 4 CRATE, 1 PROBABLE CAB, 1 POSSIBLE SHACKLETON, AND 1 UNIDENTIFIED MEDIUM STRAIGHT-WING. FIVE PROBABLE FAGOT/FRESCO AND 2 SMALL STRAIGHT-WING ARE AT THE GRAVEYARD.

25X1

25X1

25X1

25X1

25X1

TOP SECRET CHESS RUFF

4016 13-16 MARCH 1965

25X1

25X1

25X1

HALAB AIRFIELD

SY 3610N 03712E

3.5 NM ESE OF HALAB (ALEPPO). ONE E/W PROBABLY ASPHALT, SERVICEABLE RUNWAY (LENGTH UNDETERMINED DUE TO HEAVY HAZE COVERING THE EAST END), 2 ASPHALT TAXIWAYS SERVING 2 ASPHALT PARKING APRONS, 11 HARDSTANDS, AND 4 SMALL REVETTED DRIVE-THROUGH BUILDINGS ARE DISPERSED IN A CIRCULAR PATTERN AROUND THE WESTERN HALF OF THE RUNWAY. ONE LARGE DOUBLE BAY HANGAR, 20 PROBABLE BARRACKS AND NUMEROUS SUPPORT BUILDINGS OBSERVED IN CLOUD-FREE AREAS. TWO PROBABLY OCCUPIED 3-GUN AAA SITES ARE LOCATED ON EACH SIDE OF THE WEST END OF RUNWAY.

AIRCRAFT -- 10 SMALL STRAIGHT-WING.

25X1

HAMAH AIRFIELD

SY 3506N 03642E

2.5 NM SW OF HAMAH. TWO RUNWAYS, ONE 8,400 X 170 FT E/W ASPHALT AND CONCRETE, SERVICEABLE, WITH A PARALLEL CONCRETE TAXIWAY, AND THE OTHER 4,435 X 155 FT NE/SW ASPHALT, UNSERVICEABLE.

OTHER FACILITIES INCLUDE 3 CONCRETE PARKING APRONS, 10 DISPERSED HARDSTANDS, 3 LARGE HANGARS, 14 BARRACKS, AND 11 SUPPORT BUILDINGS. NO NEW CONSTRUCTION OBSERVED. DEFENSES INCLUDE THREE 3-GUN AAA SITES (1 UNOCCUPIED).

AIRCRAFT -- 7 FAGOT/FRESCO AND 3 PROBABLE AIRCRAFT SHIPPING CRATES.

25X1

KOYUL AIRFIELD

IN 3236N 07912E

NO STORAGE FACILITIES OR CONSTRUCTION ACTIVITY OBSERVED.

AIRCRAFT -- NONE OBSERVED.

25X1

25X1

TOP SECRET CHESS RUFF

4016 13-16 MARCH 1965

QIZAN AIRFIELD

SR 1655N 04234E

7,405 X 145 FT E/W CONCRETE RUNWAY, SERVICEABLE. ONE SMALL CONCRETE RAMP IS ON SOUTH SIDE OF RUNWAY. NO NEW CONSTRUCTION OR MILITARY ACTIVITY OBSERVED.

AIRCRAFT -- NONE OBSERVED.

KHAMIS MUSHAYT AIRFIELD

SR 1818N 04248E

9,820 X 150 FT BLACKTOP RUNWAY, SERVICEABLE. NO NEW CONSTRUCTION OBSERVED.

AIRCRAFT -- NONE OBSERVED.

VASALEMMA AIRFIELD

UR 5916N 02412E

NO APPARENT CHANGE SINCE SEP 61. RUNWAY IS CLEARED OF SNOW. NO NEW CONSTRUCTION OBSERVED.

AIRCRAFT -- 11 FAGOT/FRESCO ON TAXIWAY NORTH OF RUNWAY, 25 FAGOT/FRESCO JUST OFF TAXIWAY SOUTH OF RUNWAY, AND 14 FAGOT/FRESCO ON HARDSTANDS SOUTH OF RUNWAY.

BRYUSTERORT AIRFIELD

UR 5456N 01959E

NO APPARENT CHANGE SINCE DEC 61. RUNWAY IS CLEARED OF SNOW.

AIRCRAFT -- 10 SMALL SWEEP-WING FIGHTER WEST OF THE NORTH END OF RUNWAY AND 10 PROBABLE HELICOPTERS ALONG SOUTH TAXIWAY.

PARDUBICE AIRFIELD

CZ 5001N 01544E

NO ELECTRONIC OR COMMUNICATIONS FACILITIES OBSERVED. RUNWAY IS CLEARED OF SNOW.

25X1
25X1

25X1

25X1

25X1

25X1

25X1

25X1

25X1

25X1

TOP SECRET CHESS RUFF

4016 13-16 MARCH 1965



AIRCRAFT -- 4 SMALL SWEEP-WING FIGHTER.



BALCHIK AIRFIELD

BU 4326N 02811E

AN ILS INNER BEACON IS APPROXIMATELY 3,500 FT FROM THE NNW END OF THE RUNWAY. NO COMMUNICATIONS FACILITIES OBSERVED.

AIRCRAFT -- 13 FAGOT/FRESCO.



PRUSZCZ AIRFIELD

PO 5415N 01840E

NO ELECTRONIC OR COMMUNICATIONS FACILITIES OBSERVED.

AIRCRAFT -- AT LEAST 27 SMALL SWEEP-WING FIGHTERS.

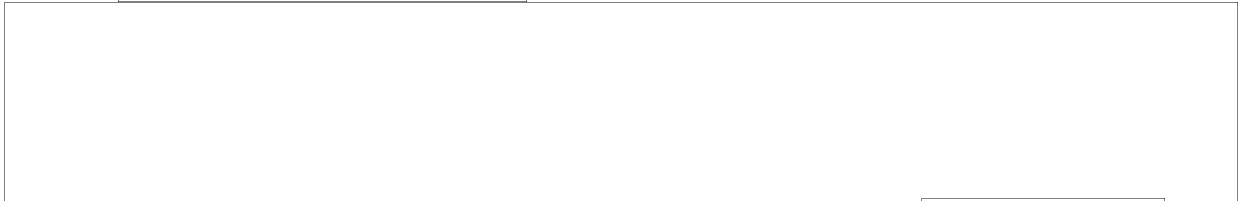


CHING-TAO AIRFIELD

CH 3609N 12023E

6,100 X 270 FT NW/SE AND 5,100 X 330 FT NE/SW PREPARED SURFACE RUNWAYS, BOTH SERVICEABLE. FACILITIES INCLUDE 12 DISPERSED REVETMENTS, A LARGE PARKING AND MAINTENANCE AREA, 4 HANGARS, AND APPROXIMATELY 30 SUPPORT BUILDINGS. RADAR FACILITY IS ON THE SOUTH SIDE OF NW/SE RUNWAY. QUALITY OF PHOTOGRAPHY PRECLUDES IDENTIFICATION OF COMPONENTS.

AIRCRAFT -- 3 BEAGLE, 6 FAGOT/FRESCO, 1 PROBABLE FAGOT/FRESCO, 1 PROBABLE CAB, AND 1 SMALL STRAIGHT-WING.



25X1
25X1

25X1

25X1

25X1

25X1

25X1

25X1

25X1

TOP SECRET CHESS RUFF

4016 13-16 MARCH 1965



25X1



25X1

RIGA/SPILVE AIRFIELD

UR 5659N 02404E

RUNWAY AND TAXIWAYS ARE CLEARED OF SNOW. AN ILS SITE, LOCATED 6,100 FT FROM, AND INLINE WITH, THE NW END OF THE RUNWAY, CONTAINS 3 SMALL BUILDINGS. A GCA SITE IS LOCATED SOUTH OF THE RUNWAY.

AIRCRAFT -- 5 CRATE, 1 POSSIBLE CRATE, 5 CAB, 1 PROBABLE CAB, 4 COLT, 4 CREEK, AND 14 PROBABLE CREEK.



25X1

25X1

VARNA/TOPOLI AIRFIELD

BU 4314N 02749E

NO ELECTRONIC OR COMMUNICATIONS FACILITIES OBSERVED.

AIRCRAFT -- NONE OBSERVED.



25X1

POWIDZ AIRFIELD

PO 5223N 01751E

RUNWAY IS CLEARED OF SNOW. A PROBABLE ILS SITE IS APPROXIMATELY 4,000 FT FROM, AND INLINE WITH, THE WNW END OF THE RUNWAY.

AIRCRAFT -- 14 BEAGLE, 17 PROBABLE BEAGLE, AND 1 CAB.



25X1



25X1

TOP SECRET CHESS RUFF

4016 13-16 MARCH 1965

25X1
25X1

DZHEBEL AIRFIELD

UR 3940N 05411E

NO APPARENT CHANGE IN FACILITIES SINCE [REDACTED]
DEC 64. NO NEW CONSTRUCTION OBSERVED ON GOOD QUALITY
PHOTOGRAPHY. AREA IS 40 PERCENT CLOUD COVERED.

25X1

25X1

AIRCRAFT -- 4 FLASHLIGHT/FIREBAR, 3 PROBABLE
FLASHLIGHT/FIREBAR, 11 FRESCO, AND 2 FAGOT IN
CLOUD-FREE AREAS.

25X1

CHING-TAO SEAPLANE STATION

CH 3603N 12017E

NO APPARENT CHANGE IN FACILITIES SINCE [REDACTED]
JAN 65.

25X1

25X1

AIRCRAFT -- 4 PROBABLE MADGE.

25X1

BUMBA AIRFIELD

CX 0211N 02228E

LOCATED ON THE EASTERN EDGE OF BUMBA.
3,500 X 150 FT WNW/ESE PROBABLE GRADED EARTH RUNWAY,
SERVICEABLE. SMALL PARKING APRON AND 2 SMALL BUILDINGS
OBSERVED. ENTIRE FIELD IS COVERED BY FAIR QUALITY
PHOTOGRAPHY. NO ELECTRONIC OR COMMUNICATIONS
FACILITIES OBSERVED.

AIRCRAFT -- 2 SMALL STRAIGHT-WING AND 1 HELICOPTER.

25X1

BOENDE AIRFIELD

CX 0013S 02052E

ONLY A SMALL PORTION IN THE CENTER OF THE RUNWAY AND A
HARD SURFACE PARKING APRON OBSERVED ON FAIR QUALITY
PHOTOGRAPHY. LENGTH AND WIDTH UNDETERMINED DUE TO
HEAVY CLOUD COVER. FACILITIES INCLUDE 1 BUILDING.

AIRCRAFT -- 1 SMALL STRAIGHT-WING.

25X1

25X1

TOP SECRET CHESS RUFF

4016 13-16 MARCH 1965

H-3 AIRFIELD

IQ 3256N 03944E

IMMEDIATELY SOUTH OF H-3 PUMPING STATION. 10,060 X 145 FT ESE/WNW BLACKTOP RUNWAY UNDER CONSTRUCTION WITH A 710-FT CONCRETE TOUCHDOWN PORTION ON EACH END, AND A 685-FT OVERRUN ON THE WNW END. RUNWAY IS UNSERVICEABLE. THE CONCRETE TOUCHDOWN PORTION OF THE WNW END APPEARS COMPLETE WHILE THE ESE PORTION IS IN THE EARLY STAGES OF CONSTRUCTION. A SECOND RUNWAY, 3,215 X 148 FT N/S, PROBABLY OILED EARTH SURFACE RUNWAY, IS SERVICEABLE.

FACILITIES INCLUDE A PARALLEL TAXIWAY ON THE NORTH SIDE OF THE BLACKTOP RUNWAY WITH 2 END CROSSOVERS AND 2 LINK CROSSOVERS AND 2 PARKING APRONS. THE APRONS AND TAXIWAYS APPEAR TO BE OILED SAND AND CLAY.

THE H-3 PUMPING STATION ON THE HADITHAH/HAIFA OIL PIPELINE IS LOCATED NORTH OF THE WNW END OF THE BLACKTOP RUNWAY. ONE LARGE POL STORAGE TANK IS UNDER CONSTRUCTION AND 2 BASES FOR CONSTRUCTION OF 2 MEDIUM POL STORAGE TANKS ARE LOCATED IN THE PUMPING STATION. ONE STORAGE BUILDING IMMEDIATELY WEST OF THE PUMPING STATION IS UNDER CONSTRUCTION. THE AIRFIELD HOUSING AREA IS LOCATED WEST OF THE N/S RUNWAY. A TOKEN RADAR SITE AND A PROBABLE KNIFE REST/FISH NET RADAR ARE 3,000 FT WEST OF THE SOUTH END OF THE N/S RUNWAY.

AIRCRAFT -- NONE OBSERVED.

(SEE ATTACHMENT)

AL HUDAYDAH AIRFIELD NEW

YE 1445N 04258E

2.4 NM SE OF AL HUDAYDAH. 9,890 X 135 FT NE/SW BLACKTOP RUNWAY, SERVICEABLE. AIRFIELD COVERED ON GOOD QUALITY, NON-STEREO PHOTOGRAPHY.

AIRCRAFT -- 1 BADGER AND 10 BEAGLE.

25X1

25X1

25X1

25X1

25X1

25X1

[REDACTED] TOP SECRET CHESS RUFF [REDACTED]

4016 13-16 MARCH 1965

BURGAS AIRFIELD

BU 4233N 02730E BONUS 1

4 NM NNE OF BURGAS.
APPROXIMATELY 6,000 FT NE/SW RUNWAY (PROBABLY TO BE
CONCRETE SURFACED) IS UNDER CONSTRUCTION ON SITE OF OLD
3,600-FT SQUARE SOD LANDING AREA.

AIRCRAFT -- NONE OBSERVED.

[REDACTED]

TOP SECRET CHESS RUFF [REDACTED]

25V1
25X1

25X1

25X1

**Nuclear
Energy**

Page Denied

Next 1 Page(s) In Document Denied

**Electronics/
Communications**

TOP SECRET CHESS RUFF

4016 13-16 MARCH 1965

ELECTRONICS/COMMUNICATIONS

OSTROV KILDIN GUIDED MISSILE RADAR SITE UR 6924N 03412E

ONLY NW PORTION OF ISLAND PHOTOGRAPHED, PROVIDING
COVERAGE OF STARYY KILDIN CRUISE MISSILE LAUNCH SITE 3
[REDACTED] NO RADAR OBSERVED AT THIS SITE OR
ON REMAINDER OF ISLAND COVERED.

AMDERMA TALL KING AD HEADQUARTERS FAC UR 6945N 06144E

3 NM ESE OF AMDERMA AIRFIELD.
FACILITY CONSISTS OF A TALL KING RADAR SITE, PROBABLE
HEADQUARTERS AREA, A FIGHTER-INTERCEPTOR AIRFIELD, AND
3 HF COMMUNICATION SITES.

THE TALL KING SITE CONTAINS A PROBABLE TALL KING
ANTENNA WITH ITS TYPICAL CONTROL AND SUPPORT BUILDINGS,
A GENERATOR BUILDING, AND FUEL STORAGE TANKS. THE
PROBABLE HEADQUARTERS AREA IS 1,500 FT WNW AND CONTAINS
APPROXIMATELY 20 BUILDINGS AND SEVERAL UNIDENTIFIED
RADARS.

THE 3 COMMUNICATIONS SITES ARE 9 NM WEST, 4.5 NM WSW,
AND 2 NM SSW OF THE TALL KING SITE, RESPECTIVELY. THE
FIRST COMMUNICATIONS SITE WAS IDENTIFIED ON HAZY
PHOTOGRAPHY OF [REDACTED] SEP 64 AS A POSSIBLE TALL
KING RADAR. THIS CAN NOW BE IDENTIFIED AS A
COMMUNICATIONS SITE ASSOCIATED WITH THE AMDERMA TALL
KING AD HEADQUARTERS FACILITY. IT CONTAINS A DAY-NIGHT
RHOMBIC ANTENNA, 2 VEE ANTENNAS, 2 ADDITIONAL
COMMUNICATIONS MASTS, AND 6 BUILDINGS.

THE SECOND COMMUNICATIONS SITE HAS A PROBABLE DAY-NIGHT
RHOMBIC ANTENNA, 6 OR 7 ADDITIONAL STICK MASTS, AND 3
BUILDINGS. THE THIRD SITE CONTAINS AN UNDETERMINED
NUMBER OF HF COMMUNICATIONS ANTENNAS, INCLUDING A HIGH
HORIZONTAL WIRE ANTENNA.

A SINGLE HF RHOMBIC ANTENNA IS UNDER CONSTRUCTION
IMMEDIATELY SOUTH OF THE AIRFIELD.

25X1

25X1

25X1

25X1

25X1

25X1

25X1

TOP SECRET CHESS RUFF

4016 13-16 MARCH 1965

YAKUTSK TALL KING-AW RADAR FACILITY

UR 6207N 12941E

ON HIGH GROUND 5 NM NW OF YAKUTSK. FACILITY CONTAINS A TALL KING ANTENNA ON A CONTROL BUILDING, A SUPPORT BUILDING, A GENERATOR BUILDING, AND FUEL STORAGE. SUPPORT FOR THE RADAR CREW IS IN 2 BUILDINGS JUST DOWNHILL FROM THE RADAR FACILITY. TWO ADDITIONAL ANTENNAS, POSSIBLY NEW TYPE MICROWAVE ARE LOCATED ON ENVIRONS OF THE RADAR ANTENNA.

AN ASSOCIATED RADAR FACILITY, 2 NM SSE OF THE TALL KING FACILITY, CONTAINS A PROBABLE TOWER ON MOUND AND A PROBABLE BAR LOCK ON A FRAME TOWER WITH RAMP.

IGARKA AIRFIELD PROB TALL KING AW RADAR FA UR 6726N 08636E

SEARCH REVEALED NO TALL KING RADAR AT THE SEARCH COORDINATES INDICATED (67-23N 086-35E).

A PROBABLE TALL KING AW RADAR FACILITY IS NEWLY IDENTIFIED AT IGARKA AIRFIELD AT 67-26N 086-36E. THE FACILITY CONTAINS A CONTROL BUILDING WITH A PROBABLE TALL KING ANTENNA, A SUPPORT BUILDING, AND A POSSIBLE GENERATOR BUILDING. ASSOCIATED RADARS OF UNIDENTIFIED NUMBER AND FUNCTION, AND RADAR CREW QUARTERS ARE LOCATED A SHORT DISTANCE TO THE NW.

IGARKA AIRFIELD TALL KING RADAR 2

UR 6730N 08635E

SEARCH OF AREA REVEALED NO TALL KING RADAR AT ABOVE COORDINATES. SEPARATELY.

INYA PROBABLE TALL KING FACILITY

UR 5923N 14451E

1 NM SE OF INYA AT 59-23N 144-51E. SITE CONSISTS OF A PROBABLE TALL KING RADAR, 1 PROBABLE CONTROL BUILDING, 1 PROBABLE SUPPORT BUILDING, 1

25X1

25X1

25X1

25X1

25X1

25X1

25X1

TOP SECRET CHESS RUFF

4016 13-16 MARCH 1965

PROBABLE GENERATOR BUILDING, AND 2 OTHER UNIDENTIFIED BUILDINGS.

ALTHOUGH THE ANTENNA IS NOT OBSERVED THE PROBABLE TALL KING IDENTIFICATION IS BASED ON THE SIGNATURE OF THE FACILITY. NO OTHER RADAR OBSERVED IN THE AREA.

NIZHNIYE KRESTY TALL KING AW RADAR FAC UR 6846N 16121E

0.5 NM NE OF NIZHNIYE KRESTY AIRFIELD AT 68-45-40N 161-21-00E.

FACILITY CONTAINS A TALL KING ANTENNA ON A CONTROL BUILDING, A SUPPORT BUILDING, A GENERATOR BUILDING AND FUEL OIL STORAGE.

AN ASSOCIATED RADAR SITE IMMEDIATELY NW CONTAINS A RADAR CREW QUARTERS BUILDING AND 1 OR 2 UNIDENTIFIED ANTENNAS.

A SMALL HF COMMUNICATIONS SITE IS ON THE NORTHERN EDGE OF NIZHNIYE KRESTY AND ANOTHER SMALL HF COMMUNICATIONS SITE IS 2 NM EAST OF NIZHNIYE KRESTY.

(SEE ATTACHMENT)

MINSK/MACHULISHCHE AF PROB TALL KING AD HQ UR 5348N 02734E BONUS 1

A PROBABLE TALL KING AD HEADQUARTERS FACILITY AND 2 ASSOCIATED HF COMMUNICATIONS FACILITIES ARE NEWLY IDENTIFIED NEAR MINSK/MACHULISHCHE AIRFIELD. THE PROBABLE TALL KING AD HEADQUARTERS FACILITY IS LOCATED AT 53-48N 027-34E. NO TALL KING ANTENNA OBSERVED, HOWEVER, THE SITE SIGNATURE IS COMPLETE, INCLUDING THE 2 ASSOCIATED TALL KING BUILDINGS AND A GENERATOR BUILDING. THE RADAR SITE ALSO CONTAINS 3 PROBABLE RANGE AND AZIMUTH ANTENNAS, 2 PROBABLE HEIGHT-FINDING ANTENNAS, AND 6 OTHER RADAR/ELECTRONIC EQUIPMENT POSITIONS. THE FACILITY ALSO CONTAINS 1 LARGE CONTROL BUILDING AND APPROXIMATELY 4 SMALL BUILDINGS. SNOW PRECLUDES FURTHER INTERPRETATION.

A SECURED HF COMMUNICATIONS FACILITY IS LOCATED AT 53-47N 027-32E, 2 NM SW OF THE RADAR FACILITY AND 1.5 NM WEST OF MINSK/MACHULISHCHE AIRFIELD. THE SITE CONTAINS 2 CONTROL BUILDINGS, 2 PROBABLE GENERATOR BUILDINGS, AND SEVERAL ANTENNA MASTS. SNOW PRECLUDES

25X1
25X1

25X1

25X1

25X1

25X1

TOP SECRET CHESS RUFF

4016 13-16[®] MARCH 1965

IDENTIFICATION OF ANTENNAS BY TYPE.

A SECOND NEWLY IDENTIFIED, SECURED HF COMMUNICATIONS FACILITY IS LOCATED AT 53-48N 027-27E, 5 NM WEST OF THE RADAR FACILITY. THE SITE CONTAINS AT LEAST 5 TWO-BAY FISHBONE ANTENNAS ARRANGED IN A 5-3-3-5 PATTERN, 1 CONTROL BUILDING, AND APPROXIMATELY 5 SMALLER BUILDINGS.

25X1

25X1

TOP SECRET CHESS RUFF

25X1

**Military
Activity**

TOP SECRET CHESS RUFF

4016 13-16 MARCH 1965

MILITARY ACTIVITY

FU-CHING ARMY BARRACKS NW SHAN-TIEN CH 2548N 11918E

6.5 NM NW OF FU-CHING.
AREA CONTAINS 35 BARRACKS, 14 STORAGE/MAINTENANCE BUILDINGS, 19 SEPARATELY SECURED STORAGE BUILDINGS, 5 ADMINISTRATION BUILDINGS, 21 SUPPORT BUILDINGS, AND NUMEROUS UNIDENTIFIED VEHICLES/PIECES OF EQUIPMENT SCATTERED THROUGHOUT THE CAMP. NO NEW CONSTRUCTION OBSERVED. AREA IS PROBABLY OCCUPIED. AREA COVERED ON CLEAR, FAIR QUALITY PHOTOGRAPHY.

FU-TING ARMY BARRACKS CH 2718N 12012E

ON WEST EDGE OF FU-TING ON WEST BANK OF RIVER. AREA CONTAINS 4 BARRACKS, 6 STORAGE/MAINTENANCE BUILDINGS, 3 ADMINISTRATION BUILDINGS, 14 SUPPORT BUILDINGS, A PARADE FIELD, A SMALL MOTOR POOL AND 32 UNIDENTIFIED VEHICLES/PIECES OF EQUIPMENT. AREA IS OCCUPIED. NO DEFENSES OR SECURITY OBSERVED.

PAI-CHUAN-CHUANG MILITARY INSTALLATION CH 3006N 12209E

ON NORTH EDGE OF CHOU SHAN (ISLAND) AT 30-06-00N 122-09-40E.
MAIN AREA CONTAINS 46 BARRACKS, 5 MAINTENANCE/STORAGE, 4 ADMINISTRATION AND 19 SUPPORT BUILDINGS. VEHICLES -- 10 CARGO TRUCKS. TRAINING AREA 0.6 NM NW CONTAINS 23 BARRACKS, 2 MAINTENANCE/STORAGE, 7 SUPPORT BUILDINGS, 1 ADMINISTRATION BUILDING AND AN ATHLETIC FIELD WITH AN OBSTACLE COURSE AND 3 ASSOCIATED BUILDINGS. ARTILLERY AREA 0.5 NM NORTH CONTAINS 7 BARRACKS, 1 MAINTENANCE/STORAGE, 4 SUPPORT BUILDINGS, 1 ADMINISTRATION BUILDING AND 3 FA PIECES. STORAGE AREA 1.2 NM NW CONTAINS 5 WAREHOUSE-TYPE BUILDINGS AND 1 SUPPORT BUILDING. SITE IS ACTIVE AND OCCUPIED. EACH AREA IS SECURED BY A FENCE OR WALL. INSTALLATION IS COVERED ON GOOD QUALITY, CLEAR PHOTOGRAPHY, HOWEVER, ONLY WESTERN HALF OF CHOU SHAN ISLAND IS COVERED ON PHOTOGRAPHY AND ADDITIONAL SECTIONS OF THIS CAMP MAY EXIST.

25X1

25X1

25X1

25X1

25X1

TOP SECRET CHESS RUFF

4016 13-16 MARCH 1965

SAN-TU-AO MILITARY BARRACKS

CH 2638N 11942E

SE SIDE OF SAN-TU-AO (ISLAND), JUST EAST OF SAN-TU-AO NAVAL BASE. INSTALLATION CONTAINS 11 PROBABLE BARRACKS AND 2 SUPPORT BUILDINGS. AREA DOES NOT APPEAR TO BE FENCED. NO CONSTRUCTION, MILITARY VEHICLES, OR EQUIPMENT OBSERVED. AREA IS PROBABLY OCCUPIED.

TAI SHAN MILITARY INSTALLATIONS

CH 3017N 12210E

TAI SHAN (ISLAND) IS LOCATED 62 NM SE OF SHANG-HAI IN HANG-CHOU WAN (BAY) AT 30-17N 122-10E. THIS ISLAND CONTAINS 8 OCCUPIED AND ACTIVE MILITARY AREAS WHICH WILL BE REFERENCED FROM THE CENTER OF TAI SHAN AIRFIELD RUNWAY.

AREA 3.5 NM -- AT EASTERMOST POINT OF ISLAND, A COASTAL DEFENSE POSITION WITH 3 OCCUPIED FA POSITIONS, 3 BARRACKS, 3 STORAGE BUILDINGS, 2 SUPPORT BUILDINGS, AND A SMALL PARKING AREA WITH APPROXIMATELY 7 UNIDENTIFIED PIECES OF EQUIPMENT. AN EXTENSIVE TRENCH SYSTEM HAS BEEN DUG ON THE HILL IMMEDIATELY ADJACENT TO THE FA REVETMENTS AND IS PROBABLY AN ASSOCIATED OBSERVATION POST WITH 1 MEDIUM AND 1 SMALL BUILDING.

AREA 1.3 NM EAST -- 11 PROBABLE BARRACKS, 7 PROBABLE STORAGE BUILDINGS, 3 SUPPORT BUILDINGS, AND AN ATHLETIC FIELD/PARADE GROUND.

AREA 1.5 NM EAST -- 16 BARRACKS, 6 STORAGE/MAINTENANCE BUILDINGS, 2 ADMINISTRATION BUILDINGS, AND 7 SUPPORT BUILDINGS. TWELVE FA PIECES ARE LOCATED WITHIN THE CAMP.

AREA 2.3 NM ENE -- 5 BARRACKS, 1 STORAGE BUILDING, 1 ADMINISTRATION BUILDING, 1 SUPPORT BUILDING, AND 6 PROBABLE MORTARS.

AREA 2.9 NM SW -- 17 BARRACKS, 11 STORAGE/MAINTENANCE BUILDINGS, 8 ADMINISTRATION BUILDINGS (3 MULTI-WING), 13 SUPPORT BUILDINGS, SEPARATELY SECURED LARGE STORAGE BUILDING, 1 QUONSET HUT, 4 CARGO TRUCKS, AND 3 POSSIBLE

25X1

25X1

25X1

25X1

25X1

TOP SECRET CHESS RUFF

4016 13-16 MARCH 1965

CARGO TRUCKS.

AREA 3 NM ENE -- 3 BARRACKS, 2 STORAGE BUILDINGS, 1 ADMINISTRATION BUILDING, 8 SUPPORT BUILDINGS, A PARADE FIELD, AND 9 PROBABLE FA PIECES PARKED ALONG THE EDGE OF PARADE FIELD.

AREA 3 NM SE -- A SECURED PROBABLE POL STORAGE AREA WITH 4 SUPPORT BUILDINGS, 6 LARGE CYLINDRICAL STORAGE TANKS, 4 LARGE STORAGE DRUMS, AND NUMEROUS OTHER DRUMS STORED IN ROWS THROUGHOUT THE AREA.

AREA 3.5 NM SE -- 5 BARRACKS, 2 H-SHAPED PROBABLE ADMINISTRATION BUILDINGS, 7 SUPPORT BUILDINGS, AND 5 UNIDENTIFIED PIECES OF EQUIPMENT.

LIANG-LUNG-HSU ARMY BARRACKS

CH 2327N 11316E

3.5 NM SSW OF HUA-HSIEN. FOURTEEN PROBABLE BARRACKS AND 7 PROBABLE ADMINISTRATION/SUPPORT BUILDINGS OBSERVED IN CLOUD-FREE AREAS. NO VEHICLES OR WEAPONS OBSERVED. HEAVY CLOUDS AND SHADOW PRECLUDE FURTHER INTERPRETATION.

PYONGYANG/SA-DONG MILITARY INSTALLATION

KN 3900N 12550E

0.6 NM SSE OF PYONGYANG EAST AIRFIELD. SECURED HEADQUARTERS-TYPE AREA CONTAINS 32 PROBABLE ADMINISTRATION BUILDINGS, 46 BARRACKS-TYPE BUILDINGS, 24 STORAGE/MAINTENANCE BUILDINGS, 34 SUPPORT BUILDINGS, AND 10 ASSOCIATED BUILDINGS. TWO LARGE OPEN AREAS, 1 BETWEEN THE BARRACKS AND ADMINISTRATION AREAS AND 1 IN THE WAREHOUSE AREA, ARE PROBABLY ATHLETIC FIELDS/PARADE GROUNDS. ONE OCCUPIED 6-GUN AAA SITE AND TWO 4-GUN AAA SITES (1 WITH 2 POSITIONS OCCUPIED AND 1 WITH 3 POSITIONS OCCUPIED) ARE LOCATED ADJACENT TO THE PARADE FIELD IN THE ADMINISTRATION/BARRACKS AREA. THE INSTALLATION APPEARS ACTIVE AND OCCUPIED. NO VEHICLES OR EQUIPMENT OBSERVED. NO INDICATION OF NEW CONSTRUCTION. AREA IS COVERED ON GOOD QUALITY, CLEAR PHOTOGRAPHY.

25X1

25X1

25X1

25X1

25X1

25X1

TOP SECRET CHESS RUFF

4016 13-16 MARCH 1965

SSU-MAO MILITARY COMPLEX

CH 2247N 10058E

SSU-MAO MILITARY COMPLEX CONTAINS 3 BARRACKS AREAS, 1 PROBABLE MILITARY SCHOOL, AND 1 PROBABLE ASSOCIATED BARRACKS AREA.

AREA 1 -- 1.4 NM NORTH OF SSU-MAO CONTAINS 52 BARRACKS BUILDINGS, 3 ADMINISTRATION BUILDINGS, 10 H-SHAPED MESSHALLS, 18 STORAGE/WAREHOUSE BUILDINGS, 7 SUPPORT BUILDINGS, AND 15 OTHER BUILDINGS.

AREA 2 -- ON EASTERN EDGE OF COMPLEX CONTAINS 100 BARRACKS, 6 ADMINISTRATION BUILDINGS, 30 STORAGE BUILDINGS, 16 H-SHAPED MESSHALLS, 43 SUPPORT BUILDINGS, AN ATHLETIC FIELD AND A SMALL, DRIVER-TRAINING AREA.

AREA 3 -- 1 NM SOUTH CONTAINS 170 BARRACKS, 15 ADMINISTRATION BUILDINGS, 50 STORAGE BUILDINGS, AND 60 SUPPORT BUILDINGS.

AREA 4 -- ON THE SOUTH EDGE OF COMPLEX IS A WALLED PROBABLE MILITARY SCHOOL CONTAINING 24 BARRACKS, 7 ADMINISTRATION BUILDINGS, 4 H-SHAPED MESSHALLS, 16 STORAGE BUILDINGS, 20 SUPPORT BUILDINGS, AND 10 RESIDENTIAL-TYPE BUILDINGS.

AREA 5 -- 1 NM SOUTHWEST OF COMPLEX CONTAINS 17 BARRACKS, 2 ADMINISTRATION BUILDINGS, 6 STORAGE BUILDINGS, AND 8 SUPPORT BUILDINGS.

THREE 4-GUN AAA SITES (OCCUPANCY UNDETERMINED) AND 1 PROBABLE 6-GUN AAA SITE (OCCUPANCY UNDETERMINED) ARE LOCATED AS FOLLOWS -- ONE 4-GUN 1 NM NE, ONE 4-GUN 0.5 NM SE, ONE 4-GUN 0.5 NM SOUTH, AND 1 PROBABLE 6-GUN 0.5 NM EAST OF SSU-MAO. NUMEROUS TRENCHES AND 3 SMALL-ARMS FIRING RANGES/OBSTACLES ARE OBSERVED IN THE AREA.

VEHICLES -- 31 CARGO TRUCKS, 8 POSSIBLE VEHICLES, AND 2 FA PIECES.

LEI-PEI MILITARY AREAS

CH 2122N 11016E

FOUR MILITARY AREAS OBSERVED IN VICINITY OF LEI-PEI.

AREA AT 21-22N 110-12E -- 1 ADMINISTRATION/SUPPORT BUILDING, 4 PROBABLE BARRACKS, AND 18 STORAGE/SUPPORT

TOP SECRET CHESS RUFF

25X1
20A1

25X1

25X1

25X1

25X1

TOP SECRET CHESS RUFF

4016 13-16 MARCH 1965

BUILDINGS. NO VEHICLES OR EQUIPMENT OBSERVED. AREA APPEARS OCCUPIED.

AREA AT 21-14N 110-12E -- 5 SEPARATE SUB AREAS CONTAIN 8 PROBABLE ADMINISTRATION BUILDINGS, 20 PROBABLE BARRACKS, AND APPROXIMATELY 40 STORAGE/SUPPORT BUILDINGS. NO VEHICLES OR EQUIPMENT OBSERVED. AREAS APPEAR OCCUPIED.

AREA AT 21-18N 110-14E -- 3 SEPARATE SUB AREAS CONTAIN AT LEAST 4 ADMINISTRATION BUILDINGS, 20 PROBABLE BARRACKS, AND APPROXIMATELY 30 STORAGE/SUPPORT BUILDINGS IN CLOUD-FREE AREAS. NO VEHICLES OR EQUIPMENT OBSERVED. OCCUPANCY CANNOT BE DETERMINED.

AREA AT 21-17N 110-15E -- AT LEAST 3 SEPARATE SUB AREAS (INSTALLATION PROBABLY EXTENDS BEYOND THE EDGE OF THE FRAME) CONTAIN 3 PROBABLE ADMINISTRATION BUILDINGS, 24 PROBABLE BARRACKS, AND APPROXIMATELY 30 STORAGE/SUPPORT BUILDINGS. NO VEHICLES OR EQUIPMENT OBSERVED. AREAS APPEAR OCCUPIED. NO SECURITY OR DEFENSES DISCERNIBLE.

LUTSK ARMY BARRACKS NORTHEAST

UR 5045N 02520E

NE SECTOR OF LUTSK ADJACENT TO LUTSK AIRFIELD. INSTALLATION CONTAINS 3 ADMINISTRATION BUILDINGS, 43 BARRACKS, 12 QUARTERS/BARRACKS, 2 STORAGE BUILDINGS, 5 VEHICLE SHEDS, 1 MAINTENANCE BUILDING, APPROXIMATELY 30 SUPPORT BUILDINGS, 2 ATHLETIC FIELDS AND 4 UNIDENTIFIED VEHICLES. NO ARMOR OBSERVED ON FAIR QUALITY PHOTOGRAPHY.

KUYBYSHEV ARMY BARRACKS

UR 5313N 05009E

NW SECTION OF KUYBYSHEV. AREA CONTAINS 19 MULTISTORY BARRACKS/ADMINISTRATION BUILDINGS, 27 PROBABLE DEPENDENTS QUARTERS, 9 VEHICLE STORAGE/MAINTENANCE SHEDS, AND 23 SUPPORT BUILDINGS. APPROXIMATELY 200 VEHICLES/PIECES OF EQUIPMENT OBSERVED. SNOW AND SHADOWS LIMIT INTERPRETATION.

25X1

25X1

25X1

25X1

25X1

25X1

TOP SECRET CHESS RUFF

4016 13-16 MARCH 1965

CHANG-CHIA-TUN HQ 191ST INF DIV

CH 3908N 12141E

2.8 NM NNW OF CHIN-HSIEN. DISPERSED MILITARY INSTALLATION, APPROXIMATELY 1 SQ MI IN AREA, CONTAINS 2 BARRACKS AREAS (1 IS THE CHANG-CHIA-TUN ARMY BARRACKS, [REDACTED] A MOTOR POOL, 4 LARGE EQUIPMENT PARKS (1 SECURED, 3 UNSECURED), 1 STATIONARY FIRING POINT SUB-CALIBER RANGE, A MOVING-TARGET RANGE, A SECURED AMMUNITION STORAGE AREA, A POSSIBLE DRIVER-TRAINING AREA, AND AN ATHLETIC FIELD. BUILDINGS INCLUDE 1 MULTISTORY, MULTIWIING (15 INTERCONNECTING WINGS) BUILDING, 5 BARRACKS-TYPE BUILDINGS, 5 VEHICLE SHEDS, 1 VEHICLE MAINTENANCE BUILDING, AND APPROXIMATELY 50 SUPPORT/STORAGE BUILDINGS. EQUIPMENT OBSERVED INCLUDES 10 POSSIBLE TANKS/SP GUNS, 30 POSSIBLE FA PIECES, AND APPROXIMATELY 100 UNIDENTIFIED VEHICLES IN THE SECURED EQUIPMENT PARK AND MOTOR POOL AREAS.

CHITA ARMY BARRACKS INFANTRY

UR 5202N 11329E

ON NORTH EDGE OF CHITA. INSTALLATION CONTAINS 1 POSSIBLE ADMINISTRATION BUILDING, 6 BARRACKS, 3 POSSIBLE QUARTERS/BARRACKS, 4 STORAGE BUILDINGS, AND 20 SUPPORT BUILDINGS. NO TANKS OBSERVED. AREA IS PROBABLY OCCUPIED.

CHITA ARMY BARRACKS PESCHANKA

UR 5159N 11335E

8 NM SE OF CHITA. INSTALLATION CONTAINS 3 ADMINISTRATION BUILDINGS, 18 BARRACKS, 4 QUARTERS/BARRACKS, 1 POSSIBLE MAINTENANCE BUILDING, 18 SUPPORT BUILDINGS, 1 BUILDING UNDER CONSTRUCTION, 1 PROBABLE SMALL-ARMS RANGE, AND A TRAINING AREA DIRECTLY SOUTH OF THE INSTALLATION. FIVE TANKS/ASSAULT GUNS AND 3 UNIDENTIFIED VEHICLES OBSERVED. AREA APPEARS OCCUPIED.

25X1
25X1

25X1

25X1

25X1

25X1

25X1

25X1

25X1

TOP SECRET CHESS RUFF

4016 13-16 MARCH 1965

KALININGRAD BARRACKS OBERTEICH SOUTHWEST UR 5443N 02030E

AREA APPEARS ACTIVE BUT CANNOT BE CONFIRMED OR NEGATED AS A MILITARY AREA. NO TANKS OBSERVED.

HAAPSALU ARMY BARRACKS EAST UR 5856N 02335E

1.3 NM EAST OF HAAPSALU. AREA CONTAINS 1 E-SHAPED AND 2 OTHER ADMINISTRATION BUILDINGS, AT LEAST 9 BARRACKS, 26 LARGE AND NUMEROUS SMALL SUPPORT BUILDINGS, AND 2 SECURED PROBABLE MOTOR POOLS. AT LEAST 16 SMALL UNIDENTIFIED VEHICLES AND NUMEROUS OTHER SMALL VEHICLES/PIECES OF EQUIPMENT OBSERVED.

KALININGRAD ARMY BARRACKS KUMMERAU UR 5444N 02032E

NE EDGE OF KALININGRAD. FACILITIES INCLUDE 3 ADMINISTRATION BUILDINGS, 22 BARRACKS, 6 QUARTERS, 8 STORAGE BUILDINGS, 11 VEHICLE/EQUIPMENT SHEDS, AND APPROXIMATELY 20 SUPPORT BUILDINGS. AN SA-2 SAM SITE IS IMMEDIATELY NORTH OF THE INSTALLATION. THE AREA IS OCCUPIED. NO TANKS ARE DISCERNIBLE, HOWEVER, AN UNDETERMINED NUMBER OF UNIDENTIFIED VEHICLES ARE OBSERVED.

TATISHCHEVO ARMY BARRACKS & TRAINING AREA UR 5140N 04537E

IMMEDIATELY EAST OF TATISHCHEVO. AREA CONTAINS 24 BARRACKS (4 UNDER CONSTRUCTION), 4 ADMINISTRATION BUILDINGS, 22 STORAGE BUILDINGS, 14 SUPPORT BUILDINGS, 2 QUONSET-TYPE BUILDINGS, 1 VEHICLE MAINTENANCE BUILDING, 3 PROBABLE VEHICLE SHEDS, 6 BUILDINGS UNDER CONSTRUCTION, AND 8 OTHER BUILDINGS. A BIVOUAC AREA ADJOINS THE INSTALLATION AT THE NORTHERN EDGE. AT LEAST 75 VEHICLES/PIECES OF EQUIPMENT OBSERVED. SNOW COVER PRECLUDES FURTHER INTERPRETATION.

25X1

25X1

25X1

25X1

25X1

25X1

25X1

TOP SECRET CHESS RUFF

4016 13-16 MARCH 1965

TULA ARMY BARRACKS KOSTROVO

UR 5423N 03729E

12 NM NNW OF TULA. FACILITIES ON THE WEST SIDE OF THE HIGHWAY INCLUDE A BIVOUAC AREA WITH 23 PROBABLE QUARTERS, APPROXIMATELY 150 SUPPORT BUILDINGS, 1 ADMINISTRATION BUILDING, A DOUBLE-SECURED STORAGE AREA WITH 3 REVETTED AND 1 SUPPORT BUILDINGS, 2 OTHER SINGLE-SECURED STORAGE AREAS WITH A TOTAL OF 8 STORAGE BUILDINGS AND A LARGE NUMBER OF UNOCCUPIED VEHICLE REVETMENTS.

FACILITIES ON THE EAST SIDE OF THE HIGHWAY INCLUDE 2 BARRACKS/ADMINISTRATION BUILDINGS WITH 4 ADJACENT SUPPORT BUILDINGS (OCCUPIED), A PROBABLE SECURED VEHICLE PARK WITH 8 SUPPORT BUILDINGS (OCCUPIED), 6 MISCELLANEOUS SUPPORT BUILDINGS (OCCUPIED), 3 SMALL-ARMS FIRING RANGES (INACTIVE), 1 SUB-CALIBER MOVING-TARGET FIRING RANGE (INACTIVE), AND A TANK/ASSAULT-GUN FIRING RANGE (INACTIVE). NO TANKS OR VEHICLES OBSERVED.

KEILA ARMY BARRACKS RAILROAD JUNCTION

UR 5918N 02423E

INCOMPLETE COVERAGE OF THE AREA REVEALS 5 PROBABLE BARRACKS, 5 SMALL BUILDINGS, AND A SECURED MOTOR POOL CONTAINING APPROXIMATELY 100 SMALL UNIDENTIFIED VEHICLES.

KHABAROVSK ARMY BARRACKS SITA RIVER

UR 4829N 13528E

5.5 NM NNE OF KHABAROVSK/BLAGODATNOYE AIRFIELD. AREA CONTAINS 18 PROBABLE BARRACKS, 28 STORAGE/MAINTENANCE BUILDINGS, 10 SUPPORT BUILDINGS, AND 4 ADMINISTRATION BUILDINGS. A SECURED AREA ADJACENT TO THE CAMP CONTAINS 11 WAREHOUSE-TYPE BUILDINGS. FIFTY-ONE UNIDENTIFIED VEHICLES ARE PARKED THROUGHOUT THE CAMP. THIS INSTALLATION IS OCCUPIED AND ACTIVE. NO NEW CONSTRUCTION OBSERVED ON FAIR QUALITY, SNOW-COVERED PHOTOGRAPHY.

25X1

25X1

25X1

25X1

25X1

25X1

25X1

TOP SECRET CHESS RUFF

4016 13-16 MARCH 1965

YELABUGA ARMY BARRACKS OCS

UR 5545N 05203E

AT THE EAST EDGE OF YELABUGA. AREA CONTAINS 30 MULTISTORY BARRACKS, 16 MULTISTORY BARRACKS/CLASSROOMS, 10 MESS/SUPPLY BUILDINGS, 4 ADMINISTRATION BUILDINGS, 1 HEADQUARTERS BUILDING, 6 SUPPORT BUILDINGS, AND 10 PROBABLE QUARTERS. A MOTOR POOL WITH 11 MAINTENANCE/STORAGE BUILDINGS AND AT LEAST 5 OTHER BUILDINGS ADJOINS THE AREA AT THE SW EDGE. AT LEAST 50 VEHICLES/PIECES OF EQUIPMENT OBSERVED. A POSSIBLE VEHICLE/EQUIPMENT AREA IS LOCATED IMMEDIATELY NE. SNOW COVER AND HALATION LIMIT INTERPRETATION.

KUYBYSHEV MILITARY BARRACKS AREA

UR 5312N 05010E

IN THE CENTER OF KUYBYSHEV. AREA CONTAINS 6 BARRACKS, 12 BARRACKS/SUPPLY BUILDINGS, 1 LARGE L-SHAPED BUILDING, 1 U-SHAPED BUILDING, 1 LARGE WAREHOUSE, AT LEAST 30 OTHER BUILDINGS, 10 BUILDING FOUNDATIONS, AND 2 ADJOINING MOTOR POOLS. ONE MOTOR POOL CONTAINS 1 LARGE MAINTENANCE BUILDING, 3 OTHER BUILDINGS, AND AT LEAST 50 VEHICLES/PIECES OF EQUIPMENT. THE OTHER MOTOR POOL CONTAINS 3 BUILDINGS AND AT LEAST 30 PROBABLE TRUCK TRACTORS/SEMI-TRAILERS. SNOW COVER AND SHADOWS LIMIT INTERPRETATION.

LENINAKAN ARMY BARRACKS WEST

UR 4047N 04349E

IN WEST CENTRAL PART OF LENINAKAN IN AN OLD FORTRESS. FACILITIES INCLUDE 2 U-SHAPED ADMINISTRATION BUILDINGS, 3 LONG BARRACKS ALONG WALLS OF FORTRESS, 3 OTHER BARRACKS, 10 STORAGE BUILDINGS, 6 VEHICLE SHEDS, AND 15 SUPPORT BUILDINGS. SEVEN POSSIBLE TANKS AND APPROXIMATELY 105 OTHER VEHICLES OBSERVED. AREA IS OCCUPIED.

LIEPAJA ARMY BARRACKS KARA OSTA

UR 5633N 02103E

NORTH EDGE OF LIEPAJA. LIEPAJA ARMY DEPOT KARA OSTA IS LOCATED AT THESE

25X1

25X1

25X1

25X1

25X1

25X1

TOP SECRET CHESS RUFF

4016 13-16 MARCH 1965

COORDINATES AND SHOWS NO SIGNIFICANT CHANGE SINCE [REDACTED] JUN 64. SNOW COVER PRECLUDES DETERMINATION OF CONSTRUCTION STATUS. THE FACILITY APPEARS TO BE EXPLOSIVES STORAGE. NO MILITARY VEHICLES OR PIECES OF EQUIPMENT OBSERVED.

LIEPAJA ARMY BARRACKS NORTH

UR 5633N 02101E

ON NNW EDGE OF LIEPAJA. AREA CONTAINS AT LEAST 20 MULTISTORY BARRACKS/ADMINISTRATION BUILDINGS, APPROXIMATELY 50 OTHER PROBABLE BARRACKS, NUMEROUS SMALL SUPPORT BUILDINGS, AND AN ATHLETIC OVAL/PARADE FIELD. NO MILITARY VEHICLES OR PIECES OF EQUIPMENT OBSERVED. AREA IS PROBABLY OCCUPIED.

LIEPAJA BARRACKS NORTH

UR 5634N 02101E

3 NM NORTH OF LIEPAJA AND IMMEDIATELY WEST OF LIEPAJA AMMUNITION DEPOT. NO APPARENT CHANGE IN FACILITIES SINCE [REDACTED] SEP 64. NO MILITARY VEHICLES OR PIECES OF EQUIPMENT OBSERVED.

MAYKOP ARMY BARRACKS SOUTH

UR 4434N 04007E

SE EDGE OF MAYKOP. AREA CONTAINS 8 MULTISTORY BARRACKS, 4 SMALL MULTISTORY BARRACKS, 2 BARRACKS/ADMINISTRATION BUILDINGS, 11 WAREHOUSES, 5 LARGE STORAGE BUILDINGS, 20 SMALL STORAGE BUILDINGS, 1 T-SHAPED ADMINISTRATION BUILDING, 2 SMALL MULTISTORY BUILDINGS, 18 VEHICLE SHEDS, 3 VEHICLE MAINTENANCE BUILDINGS, 2 PROBABLE VEHICLE MAINTENANCE BUILDINGS, 13 SUPPORT BUILDINGS, 24 OTHER BUILDINGS, AND A DRIVER-TRAINING AREA, AND AN ATHLETIC FIELD.

VEHICLES/EQUIPMENT -- 56 TANKS/SP GUNS, 62 CARGO TRUCKS, 19 PROBABLE CARGO TRUCKS, 28 POSSIBLE CARGO TRUCKS, 3 UTILITY TRUCKS, 6 POSSIBLE TANK TRUCKS, 95 OTHER VEHICLES, AND 145 VEHICLES/PIECES OF EQUIPMENT.

25X1
25X1

25X1

25X1

25X1

25X1

25X1

25X1

25X1

TOP SECRET CHESS RUFF

4016 13-16 MARCH 1965

MINSK ARMY BARRACKS SOUTH-SOUTHEAST

UR 5351N 02734E

ON SSE EDGE OF MINSK, WEST OF THE SVISLOCH RIVER. INSTALLATION CONTAINS 2 ADMINISTRATION BUILDINGS, 21 BARRACKS BUILDINGS, 12 SUPPORT BUILDINGS, 4 VEHICLE SHEDS, AND 150 UNIDENTIFIED VEHICLES. CLOUDS AND HAZE PRECLUDE FURTHER INTERPRETATION. NO ARMOR OBSERVED. AREA APPEARS OCCUPIED ON POOR QUALITY PHOTOGRAPHY.

MINSK ARMY BARRACKS URUCHYE

UR 5357N 02744E

7.5 NM NE OF MINSK. AREA CONTAINS APPROXIMATELY 4 ADMINISTRATION BUILDINGS, 3 ADMINISTRATION/BARRACKS BUILDINGS, 53 POSSIBLE BARRACKS, 16 QUARTERS, 22 POSSIBLE STORAGE BUILDINGS, 9 VEHICLE MAINTENANCE BUILDINGS, 8 VEHICLE SHEDS, 15 POSSIBLE SUPPORT BUILDINGS, 137 UNIDENTIFIED VEHICLES, A DRIVER-TRAINING COURSE, AND A SECURED AREA CONTAINING 3 SA-2-TYPE REVETMENTS AND ASSOCIATED BUILDINGS. SCATTERED CLOUDS, CLOUD SHADOW, AND HAZE PRECLUDE FURTHER INTERPRETATION. AREA APPEARS OCCUPIED. NO ARMOR OBSERVED.

KEILA TRAINING AREA KLOOGA EAST

UR 5919N 02423E

1.5 NM NW OF KEILA AND IMMEDIATELY NW OF KEILA ARMY BARRACKS RAILROAD JUNCTION. NO BILLETING OR SUPPORT FACILITIES OBSERVED. A LARGE DRIVER-TRAINING COURSE WHICH APPEARS TO HAVE HAD RECENT USEAGE IS OBSERVED.

SPASSK-DALNIY ARMY BARRACKS

UR 4436N 13250E

NNW OF SPASSK-DALNIY AIRFIELD AND 2.5 NM SW OF SPASSK-DALNIY AIRFIELD EAST. AREA CONTAINS 20 BARRACKS, 10 ADMINISTRATION BUILDINGS, 22 STORAGE BUILDINGS, 12 PROBABLE VEHICLE SHEDS, 4

25X1

25X1

25X1

25X1

25X1

25X1

25X1

TOP SECRET CHESS RUFF

4016 13-16 MARCH 1965

REV 4
25X1

VEHICLE MAINTENANCE BUILDINGS, AND 60 SUPPORT BUILDINGS.

VEHICLES/EQUIPMENT -- 6 CARGO TRUCKS, 20 POSSIBLE VEHICLES, 12 POSSIBLE AAA PIECES, AND 14 UNIDENTIFIED PIECES OF EQUIPMENT. A PROBABLY OCCUPIED 3-GUN AAA SITE IS ON THE NORTHERN EDGE OF THE INSTALLATION. AREA IS OCCUPIED AND ALL OF THE INSTALLATION APPEARS IN USE.

[REDACTED]

PERM ORDNANCE DEPOT

UR 5759N 05615E

IDENTIFICATION ONLY.

[REDACTED]

TAN-YANG ARMY BARRACKS SOUTHEAST

CH 2620N 11930E

1 NM SSE OF TAN-YANG. AREA CONTAINS 53 BARRACKS, 4 ADMINISTRATION BUILDINGS, 34 STORAGE BUILDINGS, 42 SUPPORT BUILDINGS, AN ATHLETIC FIELD/PARADE GROUND, 11 CARGO TRUCKS, AND 7 POSSIBLE CARGO TRUCKS. ONE POSITION OF THE 4-GUN AAA SITE REMAINS OCCUPIED AND 2 POSSIBLE AAA PIECES ARE IN THE CENTER OF THE SITE. ENTIRE INSTALLATION IS COVERED ON CLEAR, GOOD QUALITY PHOTOGRAPHY.

[REDACTED]

MAN-NAI ARMY BARRACKS MENG-HUN

CH 2150N 10023E

8 NM SSW OF MENG-HAI ON MENG-HAI--MAN-NAI ROAD. AREA CONTAINS 15 BARRACKS, 1 H-SHAPED ADMINISTRATIVE BUILDING, 3 LARGE AND 2 MEDIUM STORAGE BUILDINGS, 6 VEHICLE SHEDS, 3 H-SHAPED MESSHALLS, AND AT LEAST 15 POSSIBLE VEHICLES.

[REDACTED]

SHU-CHANG SUPPLY DEPOT HAI-KOU

CH 2001N 11016E

WEST EDGE OF SHU-CHANG, 0.5 NM SOUTH OF HAI-KOU BAY. POSSIBLE SUPPLY DEPOT CONTAINS 3 PROBABLE BARRACKS, APPROXIMATELY 75 STORAGE/SUPPORT BUILDINGS, AND

[REDACTED]

25X1

25X1

25X1

25X1

25X1

25X1

TOP SECRET CHESS RUFF

4016 13-16 MARCH 1965



25X1
ZUA1

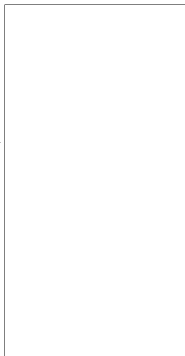
UNIDENTIFIED MATERIAL IN OPEN STORAGE. NO VEHICLES, WEAPONS, OR EQUIPMENT OBSERVED.



NAN-TAI STORAGE AREA

CH 2552N 11920E

8 NM SOUTH OF FU-CHOU/NAN-TAI AIRFIELD. SECURED AREA CONTAINS 4 STORAGE AND 10 ADMINISTRATION/SUPPORT BUILDINGS AND 30 PROBABLE POL TANKS IN 4 POSSIBLY REVETTED AREAS DISPERSED ALONG A LOOP IN THE NE SECTOR OF THE AREA. NO MILITARY VEHICLES OBSERVED.



25X1

25X1

25X1

PI-TSUN ARMY BARRACKS NORTH

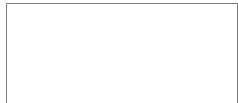
CH 2323N 11308E

2.5 NM WEST OF PI-TSUN. A DIVISION SIZE COMPLEX, DISPERSED OVER AN AREA OF APPROXIMATELY 4 SQ MI, CONSISTS OF 4 MAJOR AREAS.

AREA A --- A PROBABLE DIVISION HEADQUARTERS AREA AT 23-22N 113-06E CONTAINS 2 LARGE MULTISTORY, MULTIWIING ADMINISTRATION BUILDINGS, 12 ADMINISTRATION/SUPPORT BUILDINGS, 42 BARRACKS, AND APPROXIMATELY 75 STORAGE/SUPPORT BUILDINGS.

AREA B --- A BARRACKS AREA AT 23-23N 113-08E CONTAINS AT LEAST 15 ADMINISTRATION/SUPPORT BUILDINGS, 42 PROBABLE BARRACKS, AND APPROXIMATELY 50 STORAGE/SUPPORT BUILDINGS IN CLOUD-FREE AREAS. TWO CLEARED AREAS ON THE SOUTHERN EDGE OF THE CAMP CONTAIN 25 FA PIECES PARKED IN 2 ROWS. PROBABLE LIMBERS LOCATED JUST TO THE REAR OF EACH PIECE INDICATE THE FA ARE AT LEAST 122 MM AND POSSIBLY AS LARGE AS 152 MM. TRAINING AREAS WITH EXTENSIVE TRENCHING AND NUMEROUS ARTILLERY EMPLACEMENTS ARE ON THE NW AND SE EDGES OF THE BARRACKS AREA. SCATTERED CLOUDS AND CLOUD SHADOW PRECLUDE FURTHER INTERPRETATION OF THIS AREA.

AREA C --- A BARRACKS AREA AT 23-23N 113-09E CONTAINS AT LEAST 10 ADMINISTRATION/SUPPORT BUILDINGS, 19 BARRACKS, 30 STORAGE/SUPPORT BUILDINGS, AND A SECURED STORAGE AREA WITH 8 DISPERSED, PROBABLY REVETTED STORAGE BUILDINGS AND 2 SUPPORT BUILDINGS IN CLOUD-FREE AREAS. TWO CARGO TRUCKS ARE IN THE AREA. CLOUDS AND CLOUD



25X1

TOP SECRET CHESS RUFF



25X1
25A1

4016 13-16 MARCH 1965

SHADOW PRECLUDE FURTHER INTERPRETATION.

AREA D -- A BARRACKS AREA AT 23-25N 113-09E CONTAINS AT LEAST 3 ADMINISTRATION/SUPPORT BUILDINGS, 8 BARRACKS, 30 STORAGE/SUPPORT BUILDINGS, AND A DRIVER-TRAINING AREA IN CLOUD-FREE AREAS. ALL AREAS APPEAR ACTIVE AND OCCUPIED.



25X1

25X1

KOMSOMOLSK SUPPLY DEPOT CENTRAL 1

UR 5034N 13700E



25X1

ON NORTH EDGE OF KOMSOMOLSK BETWEEN RAIL LINE AND SILINKA RIVER.



25X1

TOP SECRET CHESS RUFF

4016 13-16 MARCH 1965

RAIL-SERVED, SECURED INSTALLATION CONTAINS 47 LARGE STORAGE BUILDINGS, 1 MEDIUM STORAGE BUILDING ADJACENT TO AN OPEN STORAGE AREA, 1 SMALL SEPARATELY SECURED STORAGE BUILDING, 4 SUPPORT BUILDINGS, AND 1 PROBABLE ADMINISTRATION BUILDING. NO VEHICLES OR EQUIPMENT OBSERVED. ENTIRE INSTALLATION APPEARS OCCUPIED AND ACTIVE ON CLEAR, VERTICAL PHOTOGRAPHY. NO NEW CONSTRUCTION OBSERVED.

KOMSOMOLSK SUPPLY DEPOT SOUTHWEST

UR 5032N 13656E

2 NM WSW OF KOMSOMOLSK.
RAIL-SERVED, SECURED INSTALLATION CONTAINS 15 STORAGE BUILDINGS, 5 SUPPORT BUILDINGS, AND AN OPEN STORAGE AREA. INSTALLATION IS ACTIVE AND OCCUPIED. NO VEHICLES, EQUIPMENT, OR NEW CONSTRUCTION OBSERVED. INSTALLATION COVERED ON GOOD QUALITY, SNOW-COVERED PHOTOGRAPHY.

KOMSOMOLSK SUPPLY DEPOT CENTRAL 2

UR 5034N 13701E

NW EDGE OF KOMSOMOLSK NEAR THE WEST BANK OF THE SILINKA RIVER.
A RAIL-SERVED, SECURED INSTALLATION CONTAINS 36 STORAGE BUILDINGS AND 5 SUPPORT BUILDINGS. INSTALLATION APPEARS OCCUPIED AND ACTIVE. NO VEHICLES OR EQUIPMENT OBSERVED. NO NEW CONSTRUCTION OBSERVED. INSTALLATION IS COVERED ON GOOD QUALITY, SNOW-COVERED PHOTOGRAPHY.

KHABAROVSK SUPPLY DEPOT TRETIY GORODOK

UR 4823N 13507E

ON SOUTH EDGE OF CITY BETWEEN N/S RAILROAD LINE AND EAST BANK OF AMUR RIVER.
RAIL-SERVED, SECURED INSTALLATION CONTAINS 20 LARGE STORAGE BUILDINGS AND 8 SUPPORT BUILDINGS. NO VEHICLES, EQUIPMENT OR NEW CONSTRUCTION OBSERVED ON FAIR QUALITY, SNOW-COVERED PHOTOGRAPHY. INSTALLATION APPEARS OCCUPIED AND ACTIVE.

25X1
25X1

25X1

25X1

25X1

25X1

25X1

25X1

TOP SECRET CHESS RUFF

4016 13-16 MARCH 1965

KYAKHTA ARMY BKS AND SAM TRAINING FAC UR 5020N 10627E

0.6 NM SOUTH OF KYAKHTA. INSTALLATION CONTAINS 3 SCHOOL BUILDINGS, 1 ADMINISTRATION BUILDING, 14 BARRACKS, 8 BARRACKS/QUARTERS, 30 SUPPORT BUILDINGS, 1 VEHICLE MAINTENANCE BUILDING WITH A MOTOR PARK CONTAINING 27 UNIDENTIFIED VEHICLES, ANOTHER MOTOR PARK WITH 33 UNIDENTIFIED VEHICLES. BETWEEN THE BARRACKS AREA AND THE MOTOR PARK IS A QUARTERS AREA WITH 43 QUARTERS AND 3 UNDER CONSTRUCTION. A TRAINING AREA IS LOCATED EAST OF THE BARRACKS. NO ARMORED VEHICLES OBSERVED. THE AREA ALSO CONTAINS 2 SMALL-ARMS RANGES AND 6 ABANDONED SMALL-ARMS RANGES. ENTIRE AREA COVERED ON GOOD QUALITY PHOTOGRAPHY. A SECURED SAM TRAINING FACILITY IS LOCATED WITHIN THE BARRACKS AREA AND CONTAINS 8 LAUNCHERS (3 HAVE POSSIBLE GUIDELINE MISSILES), 2 GUIDELINE MISSILES, 1 POSSIBLE FAN SONG RADAR, 1 POSSIBLE FIRE CAN RADAR, 4 PROBABLE VANS, 6 PROBABLE VEHICLES, 4 POSSIBLE VEHICLES, 5 LARGE UNIDENTIFIED OBJECTS, 1 UNIDENTIFIED STRUCTURE, 2 LARGE CRATES, 2 POSSIBLE CRATES, AND 8 PIECES OF UNIDENTIFIED EQUIPMENT.

STOROZHINETS MILITARY TRAINING AREA 1 UR 4809N 02546E

2.5 NM SE OF STOROZHINETS. PREVIOUSLY REPORTED MOVING-TARGET FIRING RANGES AND DRIVER-TRAINING COURSES ARE NOT IDENTIFIED DUE TO SNOW COVER. THREE PROBABLY ASSOCIATED FENCED AREAS ARE LOCATED APPROXIMATELY 1.2 NM SE OF STOROZHINETS AND CONTAIN 15 LARGE AND AT LEAST 5 SMALL SUPPORT BUILDINGS. APPROXIMATELY 25 SMALL UNIDENTIFIED VEHICLES OBSERVED PARKED IN THE CENTERMOST AREA. AN ADDITIONAL SECURED VEHICLE PARK IS ON THE EAST EDGE OF STOROZHINETS AND CONTAINS A PROBABLE VEHICLE MAINTENANCE BUILDING, AT LEAST 6 SMALL SUPPORT BUILDINGS, 23 PROBABLE TANKS/SP GUNS, AND 8 SMALL UNIDENTIFIED VEHICLES. A STORAGE AREA AT THE NW END OF THE VEHICLE PARK CONTAINS 4 SMALL BUILDINGS POSITIONED AROUND A CIRCULAR ROAD. AREA OBSERVED ON FAIR QUALITY, SNOW-COVERED, NON-STEREO PHOTOGRAPHY.

25X1

25X1

25X1

25X1

25X1

25X1

TOP SECRET CHESS RUFF

4016 13-16 MARCH 1965

VENTSPILS ARMY BARRACKS & TRAINING AREA UR 5722N 02133E

NO BARRACKS, TRAINING FACILITIES, MILITARY VEHICLES OR
PIECES OF EQUIPMENT OBSERVED AT ABOVE COORDINATES.
SNOW COVER LIMITS INTERPRETATION. NO EVIDENCE OF
MILITARY ACTIVITY.

61

TOP SECRET CHESS RUFF

25X1
25X1

25X1

25X1

25X1

TOP SECRET CHESS RUFF

4016 13-16 MARCH 1965



BOENDE MILITARY CAMP

CX 0013S 02051E

0.7 NM WSW OF BOENDE. AREA CONTAINS 12 BARRACKS, 4 ADMINISTRATION BUILDINGS, 4 STORAGE BUILDINGS, 13 SUPPORT BUILDINGS, AN ATHLETIC FIELD/PARADE GROUND, AND A SMALL-ARMS FIRING RANGE. NO SECURITY OR COMMUNICATIONS OBSERVED. NO VEHICLES OR EQUIPMENT OBSERVED. INSTALLATION APPEARS OCCUPIED. SCATTERED CLOUDS COVER THE NW AND SOUTHERN PORTIONS OF THE INSTALLATION.



BREZNIK ARMY BARRACKS SE 1

BU 4244N 02256E

EAST EDGE OF BREZNIK. FENCED AREA CONTAINS 1 PROBABLE ADMINISTRATION BUILDING, 1 H-SHAPED PROBABLE BARRACKS, 5 STORAGE BUILDINGS, 2 PROBABLE MOTOR POOL AREAS, (1 WITH 3 PROBABLE VEHICLE MAINTENANCE BUILDINGS AND 1 WITH 1 PROBABLE VEHICLE MAINTENANCE BUILDING AND 5 PROBABLE TANKS/SP GUNS), AND 8 SUPPORT BUILDINGS. IN THE NE CORNER OF THE AREA IS A DOUBLE-FENCED EXPLOSIVES STORAGE AREA CONTAINING 1 SUPPORT BUILDING, AND 7 LARGE AND 1 SMALL REVETTED, DISPERSED STORAGE BUILDINGS. AREA IS OCCUPIED.



LYUBIMETS ARMY BARRACKS SOUTHEAST 1,2,3

BU 4150N 02605E

ON THE SE EDGE OF LYUBIMETS. FACILITIES INCLUDE 1 MULTISTORY T-SHAPED BARRACKS/ADMINISTRATION BUILDING, 5 BARRACKS, 1 STORAGE BUILDING, 2 VEHICLE SHEDS, AND 3 SUPPORT BUILDINGS. THE AREA IS OCCUPIED. NO TANKS VISIBLE, HOWEVER, 7 PROBABLE VEHICLES ARE OBSERVED.



25X1

25X1

25X1

25X1

25X1

25X1

25X1

TOP SECRET CHESS RUFF



4016 13-16 MARCH 1965



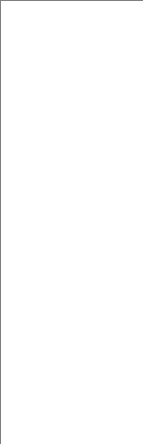
25X1

25X1

TOPRAISAR ARMY BARRACKS

RU 4401N 02827E

ON NE EDGE OF TOPRAISAR. FACILITIES INCLUDE 1 T-SHAPED ADMINISTRATION BUILDING, 25 BARRACKS, 15 QUARTERS, 4 STORAGE BUILDINGS, 2 PROBABLE BUNKERS, 2 REVETTED EXPLOSIVES STORAGE BUILDINGS, 2 UNRETTED EXPLOSIVES STORAGE BUILDINGS, 2 VEHICLE MAINTENANCE BUILDINGS, 7 VEHICLE SHEDS, AND 18 SUPPORT BUILDINGS. TRAINING FACILITIES INCLUDE AN ATHLETIC FIELD, A SMALL-ARMS FIRING-RANGE, AND 2 SUB-CALIBER MOVING-TARGET FIRING RANGES. THE AREA IS OCCUPIED. TEN TANKS AND APPROXIMATELY 100 OTHER VEHICLES OBSERVED.



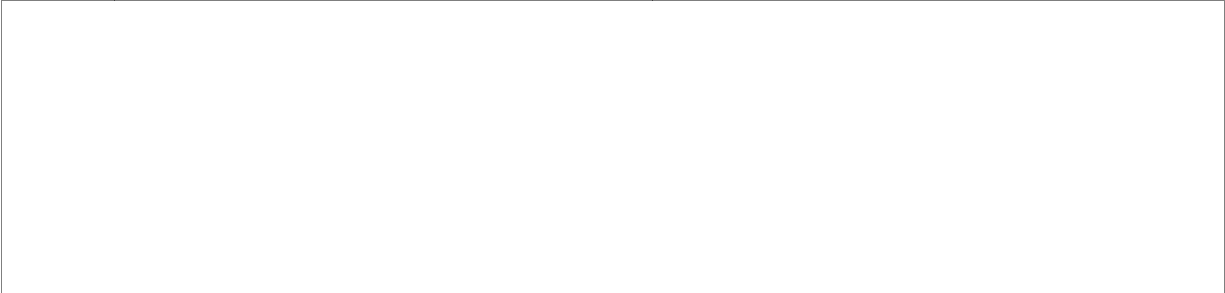
25X1



GDANSK ARMY BARRACKS WRZESZCZ W

PO 5423N 01835E

3 NM NW OF GDANSK AND IMMEDIATELY SW OF GDANSK AIRFIELD. FENCED AREA CONTAINS 1 E-SHAPED AND 3 SMALL MULTISTORY PROBABLE ADMINISTRATION BUILDINGS, 6 MULTISTORY PROBABLE BARRACKS, 10 LARGE PROBABLE VEHICLE SHEDS, NUMEROUS SMALL SUPPORT BUILDINGS, 3 VEHICLE PARKING AREAS, AND AN ATHLETIC FIELD. FOUR PROBABLE TANKS/SP GUNS AND APPROXIMATELY 150 UNIDENTIFIED VEHICLES ARE PARKED IN THE AREA.



25X1

25X1

25X1



TOP SECRET CHESS RUFF

4016 13-16 MARCH 1965

25X1
25X1

25X1

H-3 AIRFIELD MILITARY AREA

IQ 3257N 03939E BONUS 1

APPROXIMATELY 4 NM WEST OF H-3 AIRFIELD. THE MAIN BIVOUAC AREA AT 32-55N 039-39E CONTAINS 538 TENTS IN 8 SEPARATE AREAS. FORTY-ONE TANKS/SP GUNS, 4 PROBABLE TANK TRAILERS, 18 PROBABLE ARTILLERY PIECES WITH POSSIBLE LIMBERS, APPROXIMATELY 200 TRUCKS, AND APPROXIMATELY 228 UNIDENTIFIED VEHICLES/PIECES OF EQUIPMENT ARE LOCATED IN THE BIVOUAC AREA.

A SECOND SMALL BIVOUAC AREA 2 NM NORTH AT 32-58N 039-39E CONTAINS 55 TENTS. TWENTY-EIGHT TRUCKS AND 21 TRAILERS ARE IN THIS AREA.

A TRAINING AREA IS 2 NM NE OF THE MAIN BIVOUAC AREA AT 32-57N 039-41E. TRAINING FACILITIES INCLUDE ARTILLERY BATTERIES AND INFANTRY TRAINING AREAS. TEN TENTS AND A NUMBER OF STORAGE REVETMENTS AS WELL AS OPEN STORAGE ARE OBSERVED IN THIS AREA. FORTY TANKS/SP GUNS AND 12 UNIDENTIFIED VEHICLES/PIECES OF EQUIPMENT ARE THROUGHOUT THE TRAINING AREA.

(SEE ATTACHMENT)



25X1

25X1

TOP SECRET CHESS RUFF

4016 13-16 MARCH 1965

25X1

DAMASCUS ARMY BARRACKS QATANA

SY 3328N 03605E BONUS 2

12 NM SW OF DAMASCUS AND APPROXIMATELY 2 NM NORTH OF QATANA. MILITARY COMPLEX COVERS APPROXIMATELY 4 SQ MI AND CONTAINS 10 ASSOCIATED FENCED AREAS WITH A TOTAL OF 320 BARRACKS, 173 ADMINISTRATION, 47 STORAGE, 48 VEHICLE MAINTENANCE, AND 146 MISCELLANEOUS BUILDINGS, 2 AMMUNITION STORAGE AREAS (1 WITH 19 REVETTED BUNKERS AND 1 WITH 5 REVETTED BUNKERS), AND A POSSIBLE POL STORAGE AREA.

TWENTY-TWO PROBABLE TANKS/SP GUNS, 53 POSSIBLE ARMORED PERSONNEL CARRIERS, 83 PROBABLE CARGO TRUCKS, 20 POSSIBLE UTILITY TRUCKS, 77 UNIDENTIFIED VEHICLES, 15 POSSIBLE CARGO TRAILERS, 3 POSSIBLE FA PIECES, AND 46 UNIDENTIFIED PIECES OF EQUIPMENT ARE PARKED THROUGHOUT THE AREA.

(SEE ATTACHMENT)



25X1

DAMASCUS EQUIPMENT PARK

SY 3334N 03622E BONUS 3

APPROXIMATELY 6 NM NE OF DAMASCUS. PARK CONSISTS OF 2 SEPARATELY FENCED AREAS. THE SUPPORT AREA CONTAINS 5 BARRACKS, 11 ADMINISTRATION/SUPPORT BUILDINGS, 12 STORAGE BUILDINGS, AND 1 OBSTACLE COURSE.

VEHICLE PARK IMMEDIATELY SE CONTAINS APPROXIMATELY 95 TANKS/SP GUNS, APPROXIMATELY 40 POSSIBLE LOWBOY TRAILERS, APPROXIMATELY 125 PROBABLE CARGO TRUCKS, APPROXIMATELY 30 SMALL UNIDENTIFIED VEHICLES/PIECES OF EQUIPMENT, AND 4 ROWS OF CLOSELY SPACED UNIDENTIFIED OBJECTS. APPROXIMATELY 300 UNIDENTIFIED VEHICLES/PIECES OF EQUIPMENT ARE LOCATED ON THE NW SIDE OF THE VEHICLE PARK.

(SEE ATTACHMENT)



25X1



25X1

Index

TOP SECRET CHESS RUFF

4016 13-16 MARCH 1965

INDEX OF COMOR TARGETS

COMOR NO	INSTALLATION NAME	CTY	COORDS	PT
	PLESETSK ICBM LAUNCH AREA D (SITE 8)	UR	6253N 04047E	6
	PLESETSK ICBM LAUNCH AREA E (SITE 7)	UR	6251N 04034E	6
	PLESETSK SSM LAUNCH AREA F	UR	6252N 04044E	6
	PLESETSK ICBM PROB LAUNCH AREA G (SITE 9)	UR	6253N 04050E	6
	PLESETSK ICBM PROB LAUNCH AREA H (SITE 10)	UR	6253N 04051E	6
	TYURATAM LAUNCH COMPLEX A (SITES 1, 15)	UR	4555N 06320E	1
	TYURATAM LAUNCH COMPLEX B (SITES 2,16,17)	UR	4559N 06333E	1
	TYURATAM COMPLEX J	UR	4554N 06316E	1
	TYURATAM MAIN SUPPORT BASE	UR	4538N 06317E	1
	DROVYANAYA ICBM LAUNCH AREA A (SITE 1)	UR	5125N 11300E	4
	DROVYANAYA ICBM LAUNCH AREA C (SITE 4)	UR	5127N 11303E	4
	DROVYANAYA ICBM LAUNCH AREA E (SITE 5)	UR	5122N 11250E	4
	DROVYANAYA ICBM LAUNCH AREA F (SITE 6)	UR	5120N 11254E	4
	DROVYANAYA ICBM LAUNCH GROUP G (SITES 7-14)	UR	5135N 11303E	4
	PERM ICBM COMPLEX	UR	5742N 05619E	4
	PERM ICBM LAUNCH AREA B (SITE 2)	UR	5743N 05555E	4
	PERM ICBM LAUNCH AREA D (SITE 6)	UR	5744N 05600E	4
	PERM ICBM LAUNCH AREA E (SITE 5)	UR	5741N 05547E	4
	PERM ICBM LAUNCH AREA F (SITE 4)	UR	5741N 05604E	4
	TYUMEN ICBM LAUNCH AREA A (SITE 3)	UR	5651N 06533E	3
	TYUMEN ICBM LAUNCH AREA C (SITE 2)	UR	5650N 06526E	3
	GLADKAYA ICBM LAUNCH GROUP F	UR	5613N 09214E	1
	UZHUR ICBM LAUNCH AREA B (SITE 2)	UR	5518N 08938E	2
	UZHUR ICBM LAUNCH AREA C (SITE 3)	UR	5520N 08933E	2
	UZHUR ICBM LAUNCH AREA D (SITE 4)	UR	5517N 08926E	2
	UZHUR ICBM LAUNCH AREA F (SITE 6)	UR	5525N 08939E	2
	UZHUR ICBM LAUNCH AREA G (SITE 7)	UR	5522N 08927E	2
	UZHUR ICBM LAUNCH AREA I (SITE 9)	UR	5513N 08921E	2
	KOZELSK ICBM COMPLEX	UR	5356N 03549E	4
	KOZELSK ICBM LAUNCH AREA A (SITE 3)	UR	5354N 03544E	2
	KOZELSK ICBM LAUNCH AREA B (SITE 2)	UR	5348N 03547E	2
	KOZELSK ICBM LAUNCH AREA D (SITE 4)	UR	5353N 03551E	2
	KOZELSK ICBM LAUNCH AREA E (SITE 5)	UR	5351N 03541E	2
	KOZELSK ICBM LAUNCH AREA F (SITE 6)	UR	5340N 03538E	2
	KOZELSK ICBM SUSPECT LAUNCH AREA	UR	5344N 03538E	2
	OLOVYANNAYA ICBM LAUNCH AREA A (SITE 1)	UR	5054N 11548E	6
	OLOVYANNAYA ICBM LAUNCH AREA B (SITE 2)	UR	5055N 11544E	6
	OLOVYANNAYA ICBM LAUNCH AREA C (SITE 3)	UR	5101N 11558E	6
	OLOVYANNAYA ICBM LAUNCH GRP D (SITES 4-19)	UR	5104N 11604E	6
	OLOVYANNAYA ICBM LAUNCH GROUP E	UR	5056N 11558E	6
	DOMBAROVSKIY ICBM LAUNCH AREA A (SITE 4)	UR	5111N 05937E	5
	DOMBAROVSKIY ICBM LAUNCH AREA B (SITE 3)	UR	5106N 05938E	5
	DOMBAROVSKIY ICBM LAUNCH AREA C (SITE 2)	UR	5101N 05941E	5
	DOMBAROVSKIY ICBM LAUNCH AREA D (SITE 1)	UR	5058N 05932E	5
	DOMBAROVSKIY ICBM LAUNCH AREA E (SITE 6)	UR	5104N 05928E	5

TOP SECRET CHESS RUFF

TOP SECRET CHESS RUFF

4016 13-16 MARCH 1965

KARTALY ICBM COMPLEX	UR	5302N	06035E	5
KARTALY ICBM LAUNCH AREA A (SITE 1)	UR	5301N	06026E	5
KARTALY ICBM LAUNCH AREA B (SITE 2)	UR	5256N	06031E	5
KARTALY ICBM LAUNCH AREA C (SITE 3)	UR	5255N	06024E	5
KARTALY ICBM LAUNCH AREA E (SITE 5)	UR	5300N	06016E	5
KARTALY ICBM LAUNCH AREA F (SITE 6)	UR	5304N	06018E	5
TATISHCHEVO ICBM COMPLEX	UR	5140N	04534E	6
TATISHCHEVO ICBM LAUNCH GROUP A	UR	5148N	04539E	6
TATISHCHEVO ICBM LNCH GRP B	UR	5133N	04530E	6
KIVERTSY MRBM LAUNCH SITE 1	UR	5052N	02530E	4
MEDENITSA MRBM LAUNCH SITE	UR	4922N	02345E	4
TORVA MRBM LAUNCH SITE 2	UR	5759N	02605E	2
TORVA MRBM LAUNCH SITE 1	UR	5756N	02604E	4
ZHITOMIR MRBM LAUNCH SITE 2	UR	5010N	02816E	1
LEBEDIN IRBM LAUNCH SITE 1	UR	5033N	03426E	4
LEBEDIN IRBM LAUNCH SITE 2	UR	5035N	03424E	3
TROSTYANETS MRBM LAUNCH SITE 3	UR	5058N	02539E	4
KIVERTSY MRBM LAUNCH SITE 2	UR	5057N	02536E	3
PETROVSKIY IRBM LAUNCH SITE	UR	5000N	05658E	2
BERDICHEV MRBM LAUNCH SITE	UR	5005N	02822E	1
ROZHDESTVENKA MRBM LAUNCH SITE	UR	4547N	13343E	1
UGOLNYY MRBM LAUNCH SITE	UR	6447N	17756E	1
KURDZHIPSKAYA MRBM LAUNCH SITE	UR	4431N	04000E	1
KARAKHOBDA IRBM LAUNCH SITE	UR	4957N	05651E	4
STRYY MRBM LAUNCH SITE	UR	4916N	02343E	3
LIELELEJA MRBM LAUNCH SITE	UR	5624N	02336E	3
SHIRVANSKAYA MRBM LAUNCH SITE	UR	4425N	03954E	1
TSIRGULIINA IRBM LAUNCH SITE	UR	5749N	02612E	4
LEBEDIN IRBM LAUNCH SITE 3	UR	5038N	03427E	3
KIVERTSY FIXED FIELD MRBM SITE	UR	5050N	02524E	2
SLOINIM SUSP ALTERNATE MRBM SITE (BYTEN)	UR	5244N	02531E	1
JELGAVA FIXED FIELD MRBM LAUNCH SITE 2	UR	5644N	02355E	4
LEBEDIN FIXED FIELD IRBM SITE	UR	5032N	03428E	1
VALGA FIXED FIELD MRBM LAUNCH SITE	UR	5750N	02554E	2
JELGAVA FIXED FIELD MRBM LAUNCH SITE	UR	5638N	02352E	4
SARY-SHAGAN POSS INSTRUMENTATION SITE 15	UR	4722N	06725E	4
SHUANG-CHENG-TZU MISSILE TEST CENTER	CH	4107N	10020E	4
SHUANG-CHENG-TZU LAUNCH COMPLEX A (SITE 1)	CH	4114N	10017E	4
SHUANG-CHENG-TZU LAUNCH COMPLEX C (SITE 3)	CH	4118N	10018E	4
SHUANG-CHENG-TZU MSL ASSEM & CHECKOUT FAC	CH	4106N	10016E	4
VOTKINSK ARMS MACHINE AND STEEL PLT 235	UR	5703N	05359E	1
KUYBYSHEV AIRFRAME PLANT STALIN 1	UR	5313N	05018E	1
OMSK RKT ENG TEST FAC GORNAYA BITIYA	UR	5525N	07317E	1
VORONEZH ROCKET ENGINE TEST FACILITY	UR	5134N	03908E	2
KAZAN AIRCRAFT ENGINE PLANT 16	UR	5551N	04907E	1
TBILISI AIRFRAME PLANT 31	UR	4140N	04452E	2
KUYBYSHEV AIRCRAFT ENGINE PLT FRUNZE 24	UR	5312N	05017E	1
CHENG-TU AIRFRAME PLANT	CH	3043N	10358E	4
PING-FENG-SHE-CHENG TANK PLANT	CH	4039N	10954E	4

67

TOP SECRET CHESS RUFF

2525X1

25X1

25X1

TOP SECRET CHESS RUFF

4016 13-16 MARCH 1965

BILKI UNIDENTIFIED INSTALLATION	UR 4815N 02258E 2
REYAKINO SUSPECT SSM SITE	UR 5423N 03732E 1
KOMSOMOLSK SHIPYARD AMUR 199	UR 5033N 13702E 1
GUBA SAYDA PROB NAVAL MISSILE STORAGE	UR 6915N 03320E 3
GUBA SAYDA SUBMARINE BASE	UR 6915N 03321E 3
GUBA OLENYA SUBMARINE BASE	UR 6913N 03331E 1
POLYARNYY NAVAL BASE	UR 6912N 03328E 2
YOKANGA NAVAL BASE AND SHIP REPAIR YARD	UR 6804N 03932E 1
ROSTA NAVAL BASE AND SHIPYARD SEVMORPUT	UR 6902N 03304E 2
KALININGRAD SUSP NAVAL MISSILE STORAGE	UR 5450N 02028E 2
KALININGRAD PORT FACILITIES EAST	UR 5442N 02029E 2
SEVASTOPOL PROB NAVAL MISSILE STORAGE FAC	UR 4436N 03340E 3
GUBA URA NAVAL BASE	UR 6920N 03249E 2
GUBA ARA NAVAL BASE	UR 6922N 03247E 2
GUBA PALA NAVAL BASE AND SHIP REPAIR YARD	UR 6912N 03326E 2
STRELOK STRAIT SUBMARINE BASE PAVLOVSKOGO	UR 4252N 13232E 3
STRELOK STRAIT NAVAL MSL STOR PAVLOVSKOGO	UR 4254N 13234E 3
BUKHTA ABREK NAVAL MISSILE SUPPORT FAC	UR 4255N 13225E 2
DUNAY NAVAL SUPPLY DEPOT NORTH	UR 4254N 13221E 5
MOSCOW SAM SITE E24-1	UR 5521N 03629E 4
MOSCOW SAM SITE E15-1	UR 5509N 03822E 4
LENINGRAD NORTHWEST PROB AMM LAUNCH CPLX	UR 6027N 02944E 6
SORTAVALA TALL KING AW RADAR FACILITY	UR 6153N 03027E 2
OLENEGORSK DUAL HEN HOUSE-TYPE STRUCTURE	UR 6806N 03355E 2
TALLINN AMM/SAM LAUNCH COMPLEX	UR 5924N 02419E 3
CHERPOVETS PROB AMM/SAM LAUNCH COMPLEX	UR 5906N 03810E 5
DJAKARTA SAM SITE TJILINTJING A06-2	ID 0605S 10656E 2
KURESSAARE SAM SITE B07-2	UR 5822N 02253E 5
CHUNG-WEI SAM SITE C02-2	CH 3754N 10517E 3
OLENEGORSK SAM SITE B11-0	UR 6804N 03408E 5
KLAIPEDA SAM SITE A17-3	UR 5537N 02110E 2
SEVASTOPOL SAM SITE A01-3	UR 4442N 03333E 4
SEVASTOPOL SAM SITE A27-3	UR 4435N 03325E 5
KORDON SAM TRAINING CENTER	UR 4724N 04808E 4
KALININGRAD SAM SITE B02-2	UR 5453N 02033E 4
AS SUWAYS SAM SITE B15-2	EG 2948N 03242E 2
RIGA SAM SITE B03-2	UR 5705N 02413E 2
LENINGRAD SAM SITE C31-2	UR 6014N 02934E 6
MURMANSK SAM SITE C02-3	UR 6923N 03327E 3
UKRAINA AIRFIELD	UR 5110N 12826E 1
BARANOVICHI AIRFIELD	UR 5306N 02603E 2
MINSK/MACHULISHCHE AIRFIELD	UR 5347N 02735E 3
CHERVONO-GLINSKOYE AIRFIELD	UR 4557N 02923E 6
SPASSK-DALNIY AIRFIELD EAST	UR 4437N 13253E 6
STRYY AIRFIELD	UR 4914N 02348E 4
NORILSK AIRFIELD	UR 6919N 08756E 5
MOZDOK AIRFIELD	UR 4347N 04436E 5
KALININGRAD/PROVEREN AIRFIELD	UR 5446N 02025E 5
GOMEL/PRIBYTKI AIRFIELD	UR 5218N 03110E 4

68

TOP SECRET CHESS RUFF

25X1

25X1

25X1

TOP SECRET CHESS RUFF

4016 13-16 MARCH 1965

ANADYR/LENINKA AIRFIELD	UR 6442N 17742E 6
TIKSI AIRFIELD	UR 7141N 12853E 6
ALEKSEYEVKA AIRFIELD	UR 4915N 14014E 4
MIRGOROD AIRFIELD	UR 4956N 03339E 5
RASHID AIRFIELD	IQ 3316N 04429E 6
TARTU AIRFIELD	UR 5824N 02646E 5
NORILSK AIRFIELD NORTHWEST	UR 6923N 08748E 5
TIKSI AIRFIELD WEST	UR 7141N 12842E 6
KAZAN AIRFRAME PLANT GORBUNOV 22	UR 5552N 04907E 3
VORONEZH AIRCRAFT ASSEMBLY PLANT 64	UR 5138N 03915E 6
KOMSOMOLSK AIRFRAME PLT ORDZHONIKIDZE 126	UR 5036N 13705E 4
ULAN-UDE AIRCRAFT ASSEMBLY PLANT 99	UR 5151N 10744E 2
TAGANROG AIRFRAME PLANT DIMITROV 86	UR 4711N 03852E 3
KERCH/BAGEROVO AIRFIELD	UR 4524N 03614E 3
KUYBYSHEV AIRFRAME PLANT LENIN 18	UR 5313N 05019E 4
CHENG-TU/SHUANG-LIU AIRFIELD	CH 3034N 10356E 2
HAI-KOU AIRFIELD	CH 2001N 11021E 6
HAN-KOU AIRFIELD	CH 3035N 11414E 5
LEI-YANG AIRFIELD	CH 2635N 11253E 2
LIU-TING AIRFIELD	CH 3615N 12022E 4
LU-CHIAO AIRFIELD	CH 2834N 12125E 5
KUANG-CHOU/FO-SHAN AIRFIELD	CH 2305N 11304E 5
FU-CHOU/NAN-TAI AIRFIELD	CH 2600N 11919E 5
FU-CHOU/NAN-TAI AIRFIELD	CH 2600N 11919E 6
YIN-CHUAN AIRFIELD	CH 3830N 10608E 6
PANG-FOU AIRFIELD	CH 3256N 11722E 1
HSIN-CHIN AIRFIELD	CH 3927N 12201E 1
HSIN-CHIN AIRFIELD SOUTH	CH 3919N 12158E 2
SAN-SHIH-LI-PAO AIRFIELD	CH 3917N 12146E 1
SHA-HO-YEN AIRFIELD	CH 4325N 12823E 3
SSU-MAO AIRFIELD NORTH	CH 2247N 10058E 2
LEI-PEI AIRFIELD	CH 2124N 11012E 4
TAI SHAN AIRFIELD	CH 3017N 12209E 3
HAI-CHOU AIRFIELD WEST	CH 3435N 11852E 1
WEN-CHUN AIRFIELD NORTHEAST	CH 4427N 12932E 3
WU-KUNG AIRFIELD	CH 3417N 10815E 3
HSI-AN AIRCRAFT ENGINE PLANT WU-KUNG	CH 3417N 10815E 3
YEN-TAI AIRFIELD SOUTH	CH 3724N 12121E 1
CAMILO CIENFUEGOS AIRFIELD	CU 2229N 07955W 1
HO-TIEN AIRFIELD	CH 3702N 07952E 6
PYONGYANG AIRFIELD EAST	KN 3901N 12550E 3
KEMAJORAN AIRFIELD	ID 0609S 10650E 5
KENDARI AIRFIELD	ID 0405S 12225E 1
TUBAN AIRFIELD	ID 0845S 11510E 4
AL HUDAYDAH AIRFIELD	YE 1449N 04257E 6
DAMASCUS AIRFIELD	SY 3328N 03613E 6
HALAB AIRFIELD	SY 3610N 03712E 6
HAMAH AIRFIELD	SY 3506N 03642E 6

TOP SECRET CHESS RUFF

25X1

25X1

25X1X1

25X1

TOP SECRET CHESS RUFF

4016 13-16 MARCH 1965

KOYUL AIRFIELD	IN 3236N 07912E 6
KUN-MING AIRFIELD	CH 2459N 10244E 2
QIZAN AIRFIELD	SR 1655N 04234E 6
KHAMIS MUSHAYT AIRFIELD	SR 1818N 04248E 6
ASTRAKHAN AIRFIELD NORTHWEST	UR 4625N 04755E 5
ASTRAKHAN AIRFIELD	UR 4617N 04800E 4
BLAGOYEVO AIRFIELD	UR 4654N 03042E 5
KALININGRAD/DEVAU AIRFIELD	UR 5443N 02034E 5
KACHA AIRFIELD	UR 4447N 03333E 3
SEVASTOPOL/BELBEK AIRFIELD	UR 4441N 03333E 2
VASALEMMA AIRFIELD	UR 5916N 02412E 6
BRYUSTERORT AIRFIELD	UR 5456N 01959E 6
GROMOVO AIRFIELD	UR 6043N 03006E 5
PARDUBICE AIRFIELD	CZ 5001N 01544E 6
BALCHIK AIRFIELD	BU 4326N 02811E 6
PRUSZCZ AIRFIELD	PO 5415N 01840E 6
KHABAROVSK/BLAGODATNOYE AIRFIELD	UR 4824N 13525E 3
RIGA/RUMBULA AIRFIELD	UR 5653N 02414E 5
VERINO AIRFIELD	UR 4801N 13506E 3
CRAIOVA AIRFIELD	RU 4419N 02353E 5
KHANSKAYA AIRFIELD	UR 4440N 04002E 5
HAI-LANG AIRFIELD	CH 4432N 12935E 3
CHING-TAO AIRFIELD	CH 3609N 12023E 6
BULUTUMBANG AIRFIELD	ID 0245S 10746E 3

LUTSK AIRFIELD NORTH	UR 5047N 02521E 4
RIGA/SPILVE AIRFIELD	UR 5659N 02404E 6
KUBINKA AIRFIELD	UR 5537N 03639E 3
PREZE AIRFIELD	AL 4125N 01944E 3
VARNA/TOPOLI AIRFIELD	BU 4314N 02749E 6
POWIDZ AIRFIELD	PO 5223N 01751E 6
AMDERMA AIRFIELD	UR 6946N 06133E 4
MORSHANSK AIRFIELD	UR 5326N 04143E 3
DZHEBEL AIRFIELD	UR 3940N 05411E 6
BORISOVSKIY AIRFIELD	UR 5739N 03406E 3
KUYBYSHEV/KRYAZH AIRFIELD	UR 5307N 05006E 5
RIGA AIRFIELD WEST	UR 5656N 02358E 5
NARYAN-MAR AIRFIELD	UR 6737N 05303E 4
RAS BANAS AIRFIELD	EG 2358N 03528E 4
CHING-TAO SEAPLANE STATION	CH 3603N 12017E 6
BUMBA AIRFIELD	CX 0211N 02228E 6
STANLEYVILLE AIRFIELD	CX 0031N 02509E 5
GOMA AIRFIELD	CX 0140S 02915E 5
BOENDE AIRFIELD	CX 0013S 02052E 6
ARAD/CEALA AIRFIELD	RU 4611N 02116E 3
RAUKHOVKA AIRFIELD	UR 4709N 03048E 5
H-3 AIRFIELD	IQ 3256N 03944E 6
AL HUDAYDAH AIRFIELD NEW	YE 1445N 04258E 6

70

TOP SECRET CHESS RUFF

25X1

25X1

25X1

25X1

TOP SECRET CHESS RUFF

4016 13-16 MARCH 1965

25X1

25X1

CHENG-CHOU RESEARCH/EDUCATIONAL INSTITUTE	CH	3453N	11338E	1
TANDJUNGPRIOK PORT FACILITIES	ID	0606S	10652E	2
HSIA-MEN NAVAL BASE & PORT FACILITIES	CH	2427N	11805E	2
TA-HSIEH TAO NAVAL BASE	CH	2953N	12157E	1
YU-LIN NAVAL BASE AND PORT	CH	1813N	10931E	5
CHING-TAO NAVAL DOCKYARD	CH	3604N	12019E	2
CHING-TAO SUBMARINE BASE	CH	3604N	12019E	2
HAI-KOU PORT AND NAVAL BASE	CH	2001N	11016E	3
CHOU-SHAN NAVAL BASE AND SHIPYARD	CH	3000N	12206E	2
BALAKLAVA SUBMARINE BASE	UR	4430N	03336E	3
LIEPAJA NAVAL BASE AND SHIPYARD	UR	5633N	02102E	2
BANES NAVAL BASE	CU	2055N	07542W	3
SANTIAGO DE CUBA NAVAL BASE AND PORT	CU	2001N	07550W	3
PONTIANAK PORT FACILITIES	ID	0001S	10920E	2
MA-WEI NAVAL BASE AND SHIPYARD	CH	2559N	11926E	3
SAN-TU-AO NAVAL BASE	CH	2638N	11939E	2
PALDISKI NAVAL BASE	UR	5921N	02404E	2
PRIOZERSK MTB BASE	UR	6050N	03028E	3
WU-CHANG SHIPYARD	CH	3032N	11417E	3
LU-TA SHIPYARD	CH	3855N	12138E	2
SEVASTOPOL NVL B & SHPYD SEVMORZAVOD 497	UR	4436N	03332E	4
AL HUDAYDAH PORT FACILITIES	YE	1450N	04257E	3
LU-TA PORT FACILITIES	CH	3855N	12139E	2
BUMBA PORT FACILITIES	CX	0211N	02234E	4
GOMA PORT FACILITIES	CX	0142S	02915E	3

25X1

STARAYA KUKA AMMUNITION DEPOT SOUTHWEST UR 5145N 11302E 2

25X1

TOP SECRET CHESS RUFF

4016 13-16 MARCH 1965

KUZHENKINO AMMUNITION DEPOT	UR 5741N 03358E	4
SEVASTOPOL NAVAL AMMO STORAGE NORTH	UR 4440N 03336E	2

FAGARAS CHEMICAL COMBINE 1	RU 4549N 02458E	1
----------------------------	-----------------	---

NARO-FOMINSK SUSP AMM PHASED-ARRAY RADAR	UR 5529N 03641E	4
LADYZHENKA COMMUNICATIONS SITE	UR 5056N 06845E	1
OZERKO VOSTOCHNOYE PROB CRUISE MSL SITE	UR 6953N 03209E	3
PUMMANKI GUIDED MISSILE RADAR SITE	UR 6947N 03150E	2
SOCHI GUIDED MISSILE RADAR SITE	UR 4336N 03945E	4
KERCH GUIDED MISSILE RADAR SITE	UR 4520N 03630E	3
SET NAVOLOKSKI GUIDED MISSILE RADAR SITE	UR 6925N 03330E	5
OSTROV KILDIN GUIDED MISSILE RADAR SITE	UR 6924N 03412E	6
KAPUSTIN YAR INSTRUMENTATION SITE	UR 4849N 04916E	3
KAPUSTIN YAR POSS INSTRUMENTATION SITE	UR 4856N 04936E	3

KAPUSTIN YAR POSS INSTRUMENTATION SITE	UR 4857N 04930E	3
KAPUSTIN YAR POSS INSTRUMENTATION SITE	UR 4835N 04912E	3
KAPUSTIN YAR INSTRUMENTATION SITE	UR 4836N 04926E	3
KAPUSTIN YAR POSS INSTRUMENTATION SITE	UR 4839N 04921E	3
TYURATAM INSTRUMENTATION SITE	UR 4810N 06833E	2
TYURATAM INSTRUMENTATION SITE	UR 4839N 06114E	3
TYURATAM RADIO STATION 2	UR 4536N 06316E	1
TYURATAM INSTRUMENTATION SITE	UR 4722N 06023E	3
TYURATAM INSTRUMENTATION SITE	UR 5058N 06836E	1
MINSK RADIO PLANT	UR 5354N 02734E	5
VANKAREM TALL KING AW RADAR FACILITY	UR 6750N 17553W	3
ASPIDNOYE SUSPECT TROPOSCATTER SITE	UR 6928N 16121E	4
TIKSI SUSPECT TROPOSCATTER SITE	UR 7138N 12845E	2
TAYMYLYR SUSPECT TROPOSCATTER SITE	UR 7242N 12158E	4
UELKAL SUSPECT TROPOSCATTER SITE	UR 6531N 17921W	2
MYS KEKURSKIY TALL KING RADAR	UR 6955N 03158E	2
VAYDA GUBA TALL KING RADAR	UR 6957N 03205E	2
GIRVAS TALL KING RADAR	UR 6754N 03034E	3
KARAUL TALL KING RADAR SITE	UR 7004N 08312E	2
KOVDOR TALL KING AW RADAR FAC	UR 6734N 03026E	5
OSTROV KOLGUYEV TALL KING RADAR	UR 6925N 04845E	4
YOKANGA TALL KING RADAR	UR 6801N 03952E	3
OZERO NELK TALL KING RADAR	UR 6807N 03350E	3
SALNITSA TALL KING RADAR	UR 6622N 03540E	3
MINSK SUSPECT VLF FACILITY	UR 5353N 02735E	5
SEVASTOPOL SUSPECT VLF FACILITY	UR 4436N 03331E	4
GIZHIGA TALL KING AW RADAR FACILITY	UR 6150N 16031E	2

72

TOP SECRET CHESS RUFF

25X1

25X1

25X1

25X1

25X1

25X1

25X1

TOP SECRET CHESS RUFF

4016 13-16 MARCH 1965

MYS KARASEVEY TALL KING RADAR	UR	7110N	06655E	4
AMDERMA TALL KING AD HEADQUARTERS FAC	UR	6945N	06144E	6
OSTROV GOLETS TALL KING RADAR	UR	7310N	05325E	4
NARVA RADAR TRACKING FACILITY	UR	5943N	02829E	3
ALEKSANDROV-GAY ELECTRONICS SITE	UR	5010N	04834E	3
YAKUTSK TALL KING-AW RADAR FACILITY	UR	6207N	12941E	6
CHALOBAY TALL KING RADAR SITE	UR	4919N	08244E	3
CHIKISHLYAR TALL KING RADAR SITE	UR	3732N	05408E	3
GORA ASTRUPA TALL KING RADAR SITE	UR	7222N	10448E	4
IGARKA AIRFIELD PROB TALL KING AW RADAR	FAUR	6726N	08636E	6
IGARKA AIRFIELD TALL KING RADAR 2	UR	6730N	08635E	6
INYA PROBABLE TALL KING FACILITY	UR	5923N	14451E	6
KOLODETS TALL KING RADAR SITE	UR	3712N	06053E	2
MAYNO PYLGINO TALL KING AW RADAR FACILITY	UR	6231N	17655E	4
MYS KHARASAVEY TALL KING AW RADAR FACILITY	UR	7107N	06646E	4
MYS KOSISTY PROBABLE EARLY WARNING RADAR	UR	7339N	10944E	4
NIZHNE YANSK TALL KING AW RADAR FACILITY	UR	7130N	13545E	3
NIZHNIYE KRESTY TALL KING AW RADAR FAC	UR	6846N	16121E	6
NORILSK TALL KING RADAR SITE	UR	6921N	08756E	4
NORILSK/NADEZHDA TALL KING RADAR SITE	UR	6920N	08745E	4
OSSORA EARLY WARNING RADAR SITE	UR	5917N	16305E	2
YAMSK EARLY WARNING RADAR	UR	5935N	15400E	5
OSTROV MITYUSHEV TALL KING RADAR SITE	UR	7310N	05335E	4
VOLOCHANKA TALL KING AW RADAR FACILITY	UR	7058N	09434E	4
FU-CHING ARMY BARRACKS NW SHAN-TIEN	CH	2548N	11918E	6
FU-TING ARMY BARRACKS	CH	2718N	12012E	6
PU-ERH MILITARY BARRACKS	CH	2305N	10103E	5
PAI-CHUAN-CHUANG MILITARY INSTALLATION	CH	3006N	12209E	6
SAN-TU-AO MILITARY BARRACKS	CH	2638N	11942E	6
NIEN-TZU-SHAN MUNITIONS PLANT	CH	4731N	12252E	1
TAI SHAN MILITARY INSTALLATIONS	CH	3017N	12210E	6
LIANG-LUNG-HSU ARMY BARRACKS	CH	2327N	11316E	6
PU-LAN ARMY BARRACKS	TI	3015N	08110E	3
JIH-KO-TSE ARMY BKS TASHI KYITSA MAGAR	TI	2915N	08853E	2
PYONGYANG/SA-DONG MILITARY INSTALLATION	KN	3900N	12550E	6
AL MUSAYYIB MILITARY INSTALLATIONS	IQ	3249N	04415E	3
SSU-MAO MILITARY COMPLEX	CH	2247N	10058E	6
MENG-HAI ARMY BKS AND STORAGE DEPOT SOUTH	CH	2158N	10028E	5
LEI-PEI MILITARY AREAS	CH	2122N	11016E	6
LUTSK ARMY BARRACKS NORTHEAST	UR	5045N	02520E	6
KUYBYSHEV ARMY BARRACKS	UR	5313N	05009E	6
DOS CAMINOS MILITARY CAMP	CU	2014N	07547W	1
CHANG-CHIA-TUN HQ 191ST INF DIV	CH	3908N	12141E	6
LIANG-CHIA-TIEN AREA DRIVER TRAINING AREA	CH	3912N	12155E	3
CHI-MO INFANTRY DIVISION	CH	3619N	12022E	4
BLAGOVESHCHENSK ARMY DEPOT AMUR RIVER	UR	5015N	12729E	2
BLAGOVESHCHENSK BARRACKS MOKHOVAYA PAD	UR	5022N	12735E	2
BUREVESTNIK ARMY BARRACKS KUYBYSHEVO	UR	4505N	14742E	3

TOP SECRET CHESS RUFF

25X1
25X1

25X1

25X1

25X1

TOP SECRET CHESS RUFF

4016 13-16 MARCH 1965

CHERNOVTSY ARMY BARRACKS SOUTH	UR 4816N 02555E 4
CHERNOVTSY ARMY BARRACKS ROSHTSHINSKAYA	UR 4817N 02555E 3
CHERNOVTSY ARMY BARRACKS SOUTHEAST	UR 4817N 02557E 5
CHERNOVTSY ARMY BARRACKS STALINA UL	UR 4816N 02556E 4
CHITA ARMY BARRACKS INFANTRY	UR 5202N 11329E 6
CHITA ARMY BARRACKS PESCHANKA	UR 5159N 11335E 6
KALININGRAD BARRACKS OBERTEICH SOUTHWEST	UR 5443N 02030E 6
NERCHINSK ARMY BARRACKS	UR 5159N 11636E 5
NIKOLAYEVSK TROOP BARRACKS WEST	UR 5308N 14042E 5
NIZHNEUDINSK ARMY BARRACKS	UR 5454N 09903E 3
PALDISKI ARMY BARRACKS KLOOGA WEST	UR 5919N 02413E 5
HAAPSALU ARMY BARRACKS EAST	UR 5856N 02335E 6
JELGAVA ARMY BARRACKS SVETE RIVER EAST	UR 5635N 02340E 3
KALININGRAD ARMY BARRACKS BALLIT	UR 5445N 02030E 3
KALININGRAD ARMY BARRACKS NORTHWEST	UR 5444N 02027E 3
KALININGRAD ARMY BARRACKS NORTHEAST	UR 5443N 02031E 4
KALININGRAD ARMY BARRACKS SW	UR 5441N 02028E 4
KALININGRAD ARMY BARRACKS PONART	UR 5440N 02028E 4
KALININGRAD ARMY BARRACKS KUMMERAU	UR 5444N 02032E 6
KALININGRAD ARMY BARRACKS ROTHENSTEIN	UR 5444N 02032E 5
KALININGRAD ARMY BARRACKS SHARLOTTENBURG	UR 5444N 02027E 4
KALININGRAD ARMY SUPPLY DEPOT & BKS ROZEN	UR 5441N 02033E 4
KALININGRAD BARRACKS DEVAU 180	UR 5443N 02033E 4
TAMBOV ARMY BARRACKS SOUTH	UR 5240N 04128E 3
TARTU ARMY BARRACKS	UR 5823N 02645E 3
TARTU ARMY BARRACKS SOUTH	UR 5821N 02644E 3
TATISHCHEVO ARMY BARRACKS & TRAINING AREA	UR 5140N 04537E 6
TBILISI ARMY BARRACKS SABURTALO	UR 4143N 04446E 1
TULA ARMY BARRACKS KOSTROVO	UR 5423N 03729E 6
ULAN-UDE ARMY BARRACKS UDA RIVER SOUTH	UR 5149N 10744E 3
KAMENETS-PODOLSKIY ARTY DPO SMOTRICH	UR 4841N 02635E 4
KAMENETS-PODOLSKIY ARMY BARRACKS SE	UR 4840N 02635E 3
KAZAN ARMY BARRACKS GORKIY	UR 5545N 04909E 5
KAZAN ARMY BARRACKS SOUTHEAST	UR 5543N 04909E 5
KEILA ARMY BARRACKS RAILROAD JUNCTION	UR 5918N 02423E 6
KHABAROVSK ARMY BARRACKS SITA RIVER	UR 4829N 13528E 6
VESELYY KUT ARMY BARRACKS	UR 4604N 02917E 5
KLAIPEDA ARMY BARRACKS	UR 5541N 02108E 4
VORONEZH ARMY BKS AND TRAINING CENTER S	UR 5138N 03910E 5
YELABUGA ARMY BARRACKS OCS	UR 5545N 05203E 6
YUZHNO KURILSK ARMY BARRACKS NORTHWEST	UR 4402N 14549E 3
YUZHNO KURILSK MIL BKS AND SUPPLY DEPOT	UR 4401N 14551E 3
KLAIPEDA ARMY BARRACKS KURISCHES HAFF	UR 5541N 02108E 4
KLAIPEDA ARMY BARRACKS NORTH	UR 5543N 02107E 4
KOZELSK ARMY BARRACKS	UR 5402N 03546E 4
KUYBYSHEV MILITARY BARRACKS AREA	UR 5312N 05010E 6
LENINAKAN ARMY BARRACKS NORTH	UR 4048N 04349E 1
LENINAKAN ARMY BARRACKS SOUTHWEST	UR 4046N 04349E 1
LENINAKAN ARMY BARRACKS WEST	UR 4047N 04349E 6

TOP SECRET CHESS RUFF

25X1
25X1

25X1

25X1

TOP SECRET CHESS RUFF

4016 13-16 MARCH 1965

LIEPAJA ARMY BARRACKS KARA OSTA	UR 5633N 02103E 6
LIEPAJA ARMY BARRACKS NORTH	UR 5633N 02101E 6
LIEPAJA BARRACKS NORTH	UR 5634N 02101E 6
MAYKOP ARMY BARRACKS SOUTH	UR 4434N 04007E 6
MINSK ARMY BARRACKS	UR 5356N 02737E 5
MINSK ARMY BARRACKS SOUTHWEST	UR 5353N 02731E 5
MINSK ARMY BARRACKS SOUTH-SOUTHEAST	UR 5351N 02734E 6
MINSK ARMY BARRACKS NORTH UL GORKOGO	UR 5355N 02735E 5
MINSK ARMY BARRACKS URUCHYE	UR 5357N 02744E 6
MINSK BARRACKS AND ARTILLERY OCS	UR 5356N 02737E 5
MINSK BARRACKS KALININA	UR 5357N 02745E 5
PETROZAVODSK ARMY BARRACKS NORTHWEST	UR 6148N 03417E 2
PETROZAVODSK ARMY BARRACKS SOUTH	UR 6146N 03421E 3
PETROZAVODSK ARMY BARRACKS SOUTHEAST	UR 6145N 03424E 2
PETROZAVODSK ARMY BARRACKS & RR STN S	UR 6147N 03419E 2
RIGA ARMY BARRACKS	UR 5659N 02409E 4
RIGA ARMY BARRACKS EAST	UR 5657N 02409E 3
RIGA ARMY BARRACKS NORTHEAST	UR 5659N 02411E 3
RIGA ARMY BARRACKS BUKULTI	UR 5700N 02415E 3
RIGA ARMY BARRACKS NORDEKI	UR 5657N 02403E 3
KEILA TRAINING AREA KLOOGA EAST	UR 5919N 02423E 6
RIGA ARMY BARRACKS YULGA	UR 5659N 02414E 3
RIGA BARRACKS AND MANEUVER AREA ROPAZI	UR 5706N 02422E 3
RIGA BARRACKS BOLDERAVA SOUTH SOUTHEAST	UR 5700N 02404E 3
SERYSHEVO ARMY BARRACKS WEST	UR 5105N 12821E 2
SEVERO-KURILSK ARMY BARRACKS WEST	UR 5041N 15607E 3
SEVERO-KURILSK ARMY BARRACKS SOUTH	UR 5040N 15608E 3
SPASSK-DALNIY ARMY BARRACKS	UR 4436N 13250E 6
STRYY ARMY BARRACKS SOUTHWEST	UR 4914N 02349E 5
KLAIPEDA TRAINING AREA KLOSIAI	UR 5536N 02112E 4
RIGA HQ BALTIC MILITARY DISTRICT	UR 5657N 02406E 5
KALININGRAD MILITARY TRAINING AREA	UR 5445N 02017E 4
JELGAVA ORDNANCE DEPOT	UR 5639N 02343E 3
PERM ORDNANCE DEPOT	UR 5759N 05615E 6
CHU-CHOU BARRACKS WU-LI-TUAN SW	CH 2747N 11310E 5
TAN-YANG ARMY BARRACKS SOUTHEAST	CH 2620N 11930E 6
MAN-NAI ARMY BARRACKS MENG-HUN	CH 2150N 10023E 6
SHU-CHANG SUPPLY DEPOT HAI-KOU	CH 2001N 11016E 6
NAN-TAI STORAGE AREA	CH 2552N 11920E 6
PI-TSUN ARMY BARRACKS NORTH	CH 2323N 11308E 6

ZVENIGOROD SUPPLY DEPOT	UR 5538N 03649E 2
KAZAN MIL SUP DPO STANTSIIYA DERBYSHKI	UR 5550N 04912E 5
PETROZAVODSK QUARTERMASTER DEPOT PEREVALKAUR	6148N 03419E 2
TBILISI ARMY DEPOT PUG 20	UR 4141N 04452E 1
KOMSOMOLSK SUPPLY DEPOT CENTRAL 1	UR 5034N 13700E 6
KOMSOMOLSK SUPPLY DEPOT SOUTHWEST	UR 5032N 13656E 6

75

TOP SECRET CHESS RUFF

25X1

25X1

25X1

25X1

TOP SECRET CHESS RUFF

4016 13-16 MARCH 1965

KOMSOMOLSK SUPPLY DEPOT CENTRAL 2	UR 5034N 13701E	6
KHABAROVSK SUPPLY DEPOT TRETIY GORODOK	UR 4823N 13507E	6
ULAN-UDE ARMY SUPPLY DEPOT UDA RIVER SOUTHUR	5149N 10741E	3
BIYSK MILITARY TRAINING AREA	UR 5229N 08522E	2
KYAKHTA ARMY BKS AND SAM TRAINING FAC	UR 5020N 10627E	6
LUTSK ARMY BARRACKS	UR 5044N 02518E	5
SKOLE ARMY BARRACKS	UR 4902N 02331E	5
STOROZHINETS MILITARY TRAINING AREA 1	UR 4809N 02546E	6
STOROZHINETS MILITARY TRAINING AREA 2	UR 4809N 02541E	4
STOROZHINETS MILITARY TRAINING AREA 3	UR 4804N 02537E	4
VENTSPILS ARMY BARRACKS & TRAINING AREA	UR 5722N 02133E	6
HRADEC KRALOVE ARMY BKS SE	CZ 5012N 01550E	5
OPATOVICE ARTILLERY BKS	CZ 5009N 01547E	5

ORADEA ARMY BARRACKS	KU 4703N 02154E	5
ORADEA ARMY BARRACKS AND DEPOT	RU 4703N 02156E	5
ORADEA ARMY BARRACKS SOUTH	RU 4703N 02155E	5
TAPOLCA ARMY BARRACKS 1	HU 4653N 01723E	5
STANLEYVILLE ARMY BARRACKS PRINCE CHARLES	CX 0029N 02511E	2
STANLEYVILLE ARMY BARRACKS PRINCE LEOPOLD	CX 0031N 02512E	2
BOENDE MILITARY CAMP	CX 0013S 02051E	6
BURGAS ARMY BARRACKS 15	BU 4231N 02727E	5
BREZNIK ARMY BARRACKS SE 1	BU 4244N 02256E	6
LYUBIMETS ARMY BARRACKS SOUTHEAST 1,2,3	BU 4150N 02605E	6
SLIVNITSA ARMY BARRACKS NORTHWEST 1	BU 4250N 02301E	5
KOLIN ARMY BARRACKS NORTHWEST INSTLN C	CZ 5001N 01511E	4
PARDUBICE ARMY BARRACKS WEST	CZ 5002N 01545E	4
ARAD ARMY BARRACKS	RU 4611N 02118E	5
CONSTANTA MILITARY BARRACKS EAST	RU 4411N 02838E	5
CRAIOVA ARMY BARRACKS SOUTHEAST	RU 4418N 02349E	5
TOPRAISAR ARMY BARRACKS	RU 4401N 02827E	6
GDANSK ARMY BARRACKS WRZESZCZ W	PO 5423N 01835E	6
KWIDZYN ARMY BARRACKS 1	PO 5343N 01855E	5
MARCALI ARMY BARRACKS 1	HU 4635N 01724E	5
MARCALI ARMY BARRACKS 2	HU 4634N 01724E	4

KUN-MING COMPLEX	CH 2504N 10241E	3
HSIA-MEN COMPLEX	CH 2427N 11805E	1
CHING-TAO COMPLEX	CH 3604N 12019E	3
LU-TA COMPLEX	CH 3855N 12137E	2
LU-TA PETROLEUM REFINERY	CH 3858N 12139E	2
WU-HAN COMPLEX	CH 3035N 11417E	3

TOP SECRET CHESS RUFF

25X1

25X1

25X1

25X1

25X1

25X1

TOP SECRET CHESS RUFF

4016 13-16 MARCH 1965

MU-TAN-CHIANG COMPLEX	CH 4435N 12936E 1
TSO-NA COMPLEX	TI 2759N 09159E 2
DJAKARTA COMPLEX	ID 0610S 10650E 2
MANADO COMPLEX	ID 0130N 12450E 3
SABANG COMPLEX	ID 0553N 09519E 3
I-CHANG COMPLEX	CH 3042N 11117E 3
PEI-AN COMPLEX	CH 4813N 12630E 3
HO-FEI COMPLEX	CH 3151N 11717E 3
PONTIANAK PETROLEUM STORAGE	ID 0001S 10919E 2
STANLEYVILLE COMPLEX	CX 0030N 02512E 2
HSI-CHANG IRON AND STEEL MILL	CH 2754N 10216E 3
SHUANG-CHENG-TZU AREA RAILROAD LINE	CH 4105N 10015E 2
YAKUTSKAYA STOYBA POSS GEO CONTROL POINT	UR 5243N 13159E 3
YAKUTSKAYA STOYBA POSS GEO CONTROL POINT	UR 5240N 13159E 3
VERKHNIIY MYN POSS GEODETIC CONTROL POINT	UR 5252N 13159E 3
YEN-TUN AIRFIELD	CH 4230N 09410E 4

25X1
ZDAI

25X1

25X1

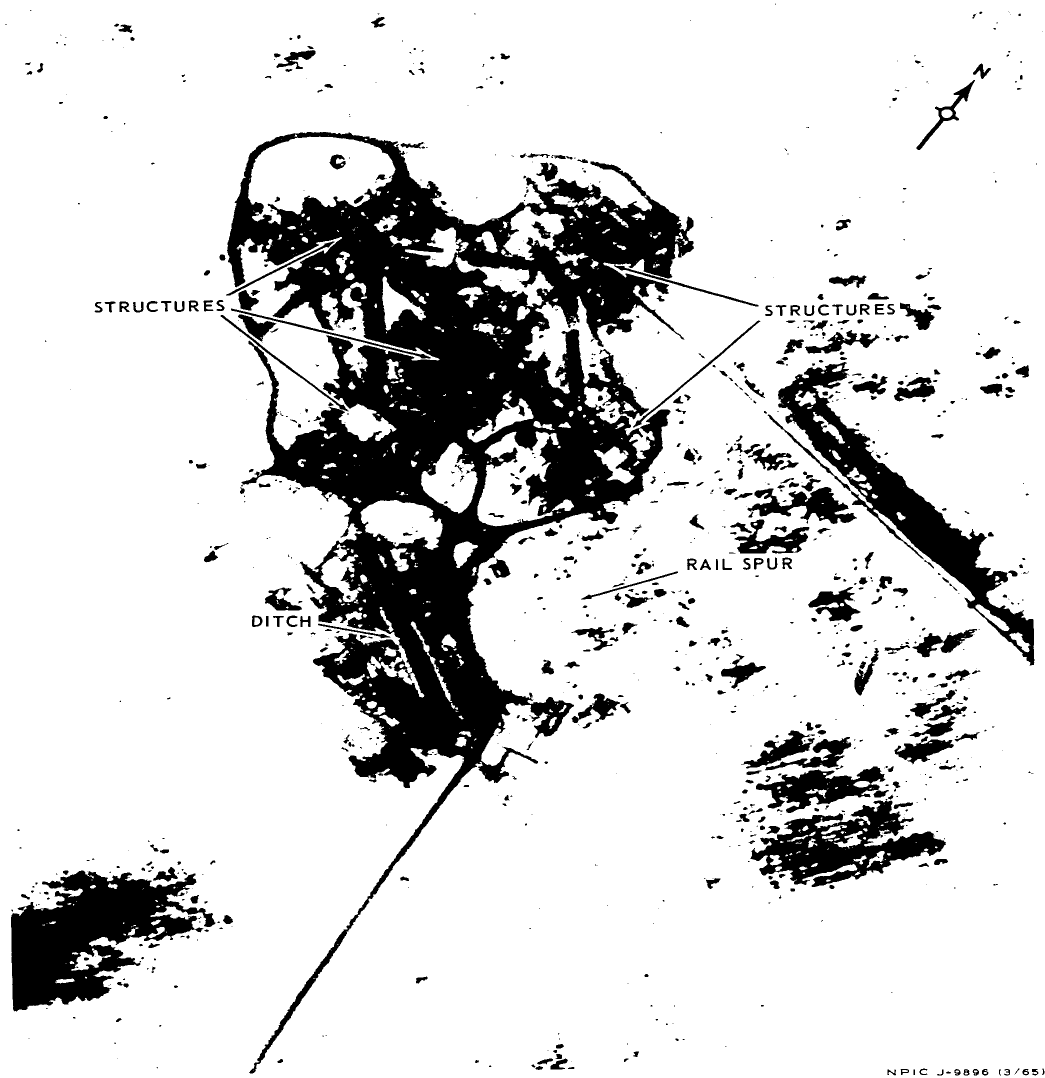
25X1

Attachments

TOP SECRET CHESS RUFF

MISSION 4016, 13-16 MARCH 1965

ATTACHMENT 1



PROBABLE LAUNCH AREA G, PLESETSK ICBM COMPLEX, USSR

NPIC J-9896 (3/65)

TOP SECRET CHESS RUFF

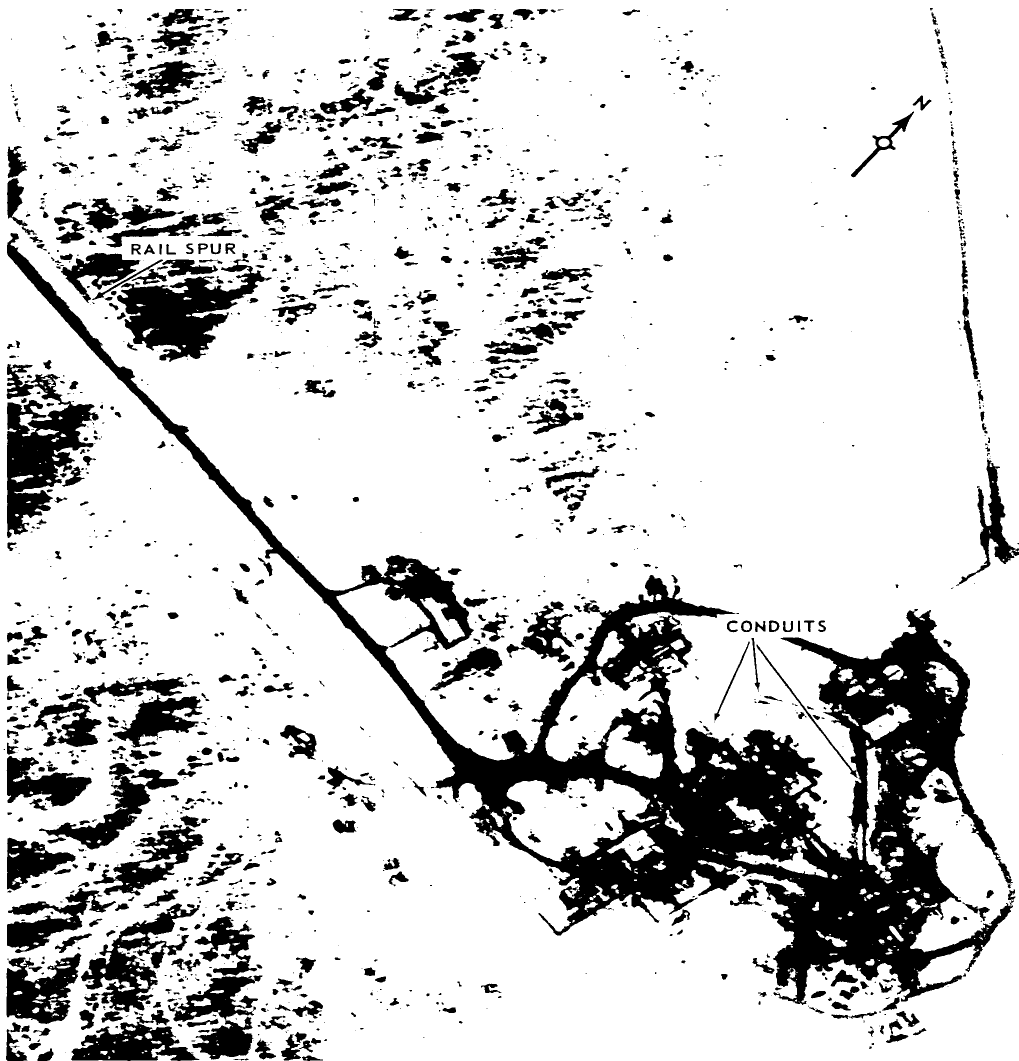
25X1
25X1

25X1

TOP SECRET CHESS RUFF

MISSION 4016, 13-16 MARCH 1965

ATTACHMENT 2



PROBABLE LAUNCH AREA H, PLESETSK ICBM COMPLEX, USSR

NPIC J-9897 (3/65)

TOP SECRET CHESS RUFF

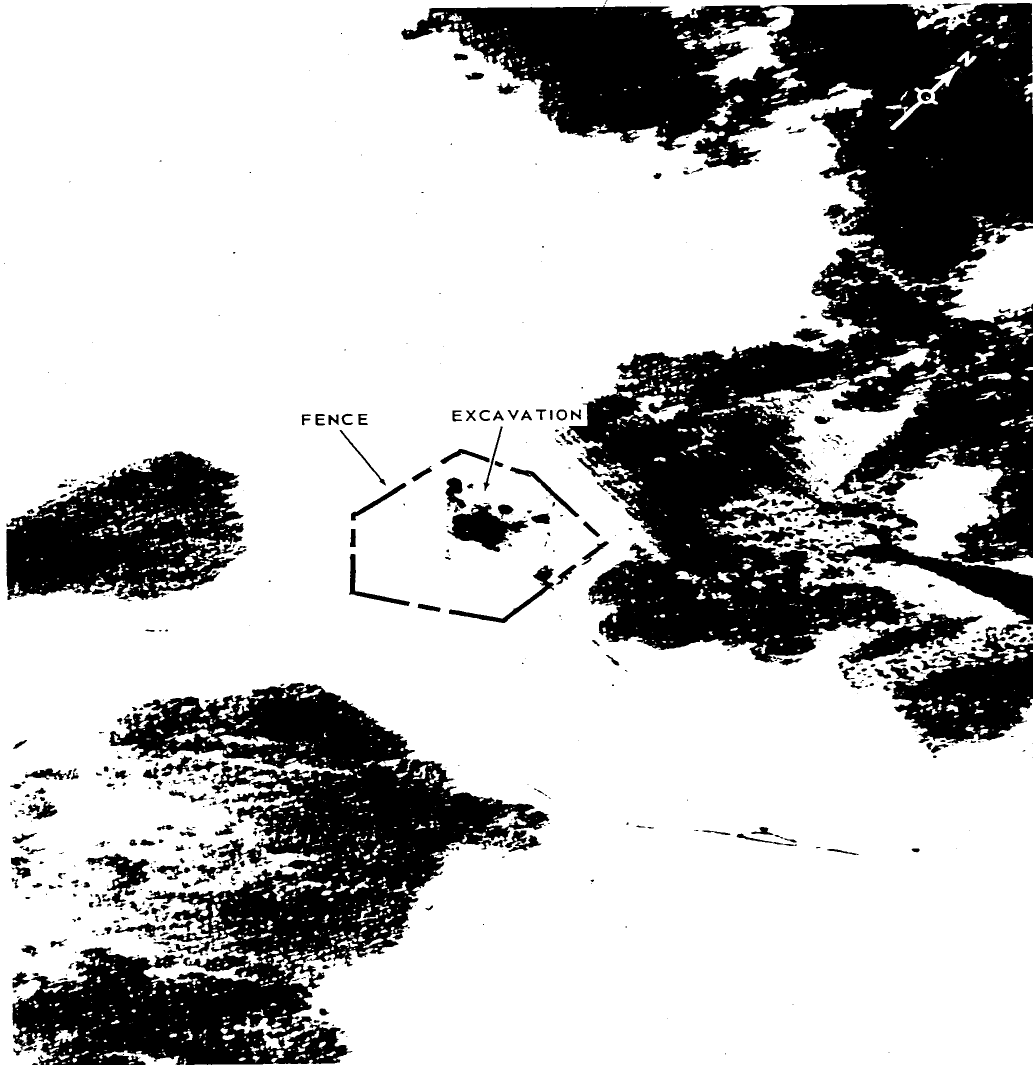
25X1
25X1

25X1

TOP SECRET CHESS RUFF

MISSION 4016, 13-16 MARCH 1965

ATTACHMENT 3



PROBABLE LAUNCH SITE 2, TATISHCHEVO ICBM COMPLEX, USSR

NPIC J-9898 (3/65)

TOP SECRET CHESS RUFF

25X1

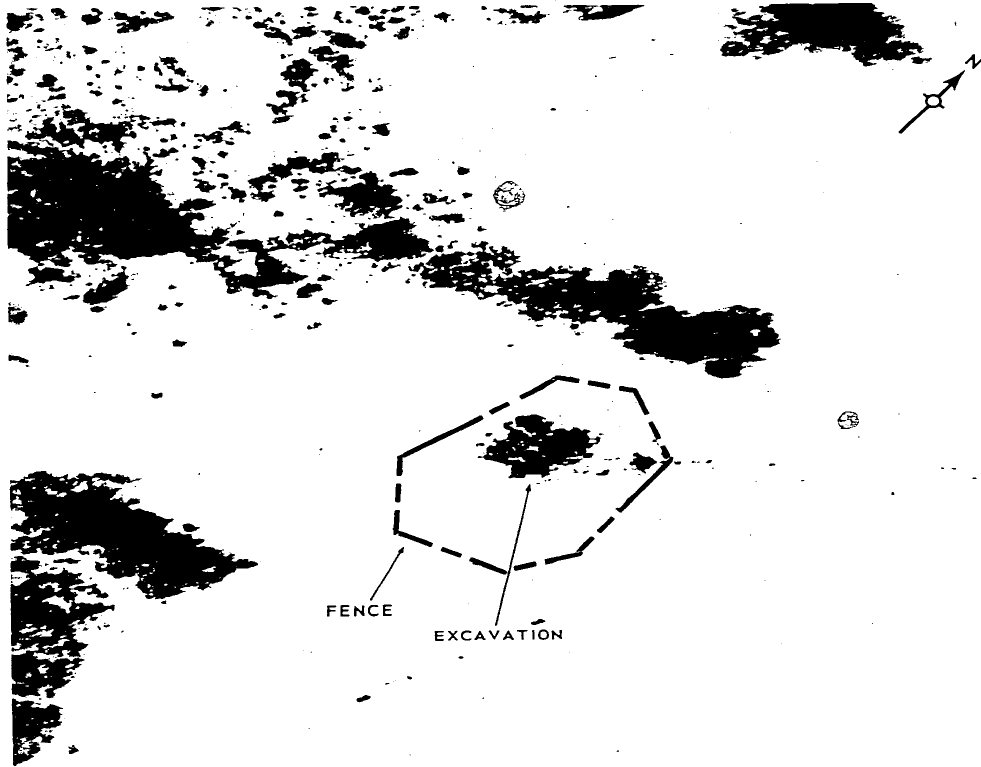
25X1

25X1

TOP SECRET CHESS RUFF

MISSION 4016, 13-16 MARCH 1965

ATTACHMENT 4



PROBABLE LAUNCH SITE 3, TATISHCHEVO ICBM COMPLEX, USSR

NPIC J-9899 (3/65)

TOP SECRET CHESS RUFF

25X1

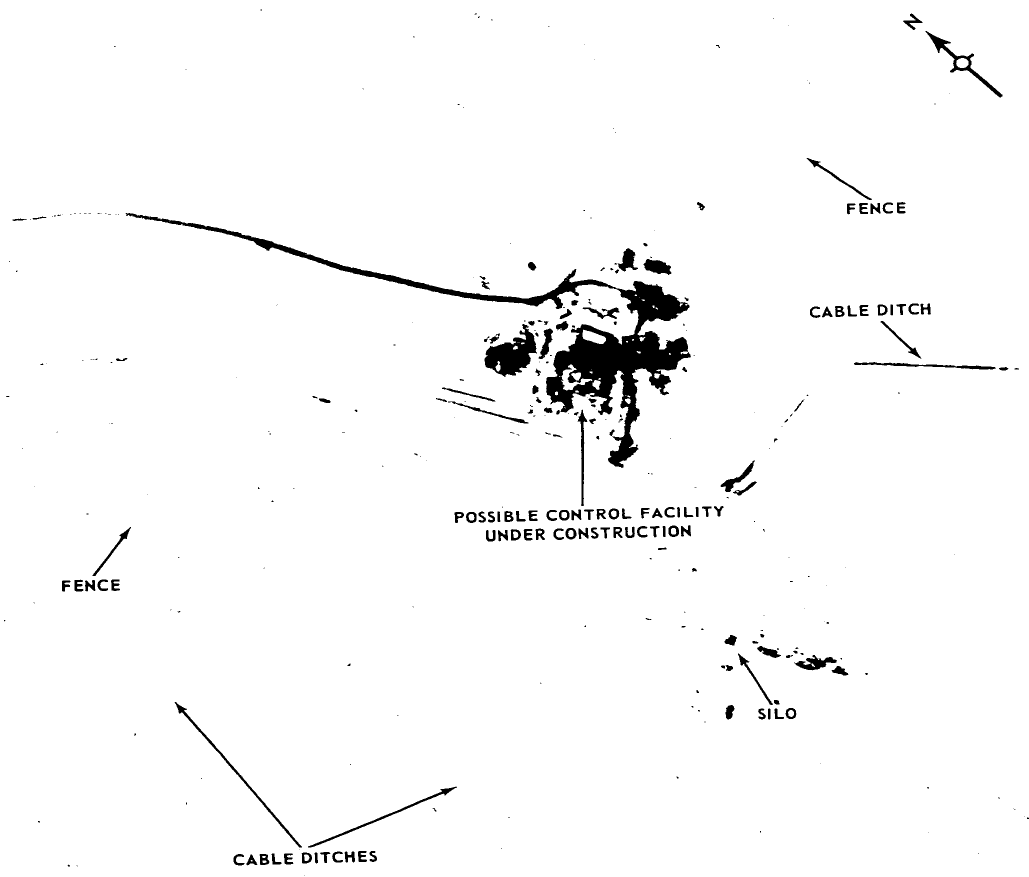
25X1

25X1

TOP SECRET CHESS RUFF

MISSION 4016, 13-16 MARCH 1965

ATTACHMENT 5



LAUNCH SITE A1, TATISHCHEVO ICBM COMPLEX

NPIC J-9900 (3/65)

TOP SECRET CHESS RUFF



25X1

25X1

25X1