

TOP SECRET

Copy 13
33 Pages

March 1965

25X1

PHOTOGRAPHIC INTERPRETATION REPORT

16833

OAK - PART I
MISSION 4016
13-16 MARCH 1965



CIA

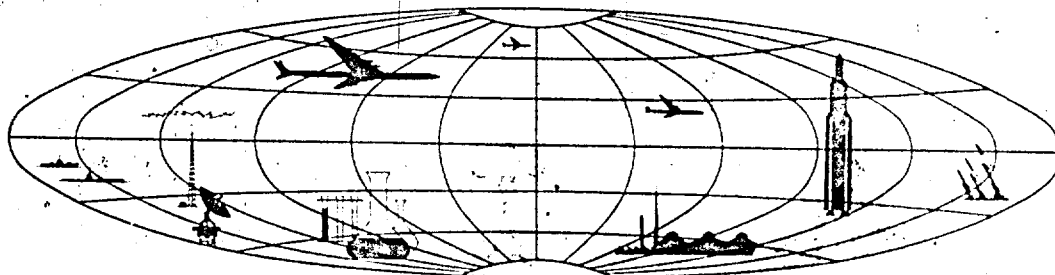


DIA



25X1

NATIONAL PHOTOGRAPHIC INTERPRETATION CENTER :



TOP SECRET

CRC, PI
Excluded from automatic
downgrading and declassification

TOP SECRET CHESS RUFF

MISSION 4016 13-16 MARCH 1965

25X1

TABLE OF CONTENTS

PREFACE	2
TRACK OF MISSION	3
HIGHLIGHTS	7
MISSILES	9
AIR FACILITIES	14
NUCLEAR ENERGY	16
NAVAL ACTIVITY/PORTS	18
BIOLOGICAL/CHEMICAL WARFARE	19
ELECTRONICS/COMMUNICATIONS	22
MILITARY ACTIVITY	23
COMPLEXES	25
OTHER ACTIVITY	26
ATTACHMENTS	APPENDIX

TOP SECRET CHESS RUFF

25X1

TOP SECRET CHESS RUFF

MISSION 4016 13-16 MARCH 1965

25X1
25X1

OAK - PART I
MISSION 4016

PREFACE

THIS IS THE FIRST OF SEVERAL OAK REPORTS ON MISSION 4016 AND PROVIDES INFORMATION ON THOSE COMMITTEE ON OVERHEAD RECONNAISSANCE (COMOR) TARGETS OBSERVED ON THE PHOTOGRAPHY.

TARGETS ARE ARRANGED IN THE OAK BY SUBJECT AND WITHIN EACH SUBJECT BY COMOR TARGET NUMBER. TARGETS OF OPPORTUNITY OBSERVED DURING THE OAK REPORTING PERIOD ARE LISTED NUMERICALLY UNDER THE APPROPRIATE SUBJECT AFTER THE LISTING OF COMOR TARGETS. LOCATIONS OF TARGETS IN THIS REPORT ARE INDICATED BY THE COUNTRY CODE PRECEDING THE COORDINATES.

SELECTED PHOTOGRAPHIC REFERENCES FOR EACH TARGET OBSERVED AND REPORTED FOLLOW THE DESCRIPTION OF THE TARGET. PASS NUMBERS ARE SUFFIXED WITH EITHER AN A FOR ASCENDING (SOUTH-TO-NORTH) OR D FOR DESCENDING (NORTH-TO-SOUTH). FRAMES ARE INDICATED BY THE LETTERS FR. THE LETTER F PRECEDING FRAME NUMBERS INDICATES THE FORWARD CAMERA, AND THE LETTER A INDICATES THE AFT CAMERA. ABSENCE OF THESE LETTERS INDICATES THAT THESE ARE FRAME AND INDEX NUMBERS. UNIVERSAL REFERENCE GRID (X-Y) COORDINATES ARE GIVEN IN PARENTHESIS AFTER THE FRAME TO WHICH THEY APPLY. THIS GRID IS IDENTIFIED AS UNIVERSAL GRID NO 1, FEB 64. SYMBOLS INDICATING CONDITIONS WHICH AFFECT THE APPEARANCE OF THE TARGET ON THE PHOTOGRAPHY ARE AS FOLLOWS -- C (CLEAR), H (HAZE), CS (CLOUD SHADOW), HC (HEAVY CLOUD COVER), SC (SCATTERED CLOUD COVER), SD (SEMIDARKNESS), O (OBLIQUITY), S (SNOW), PQ (POOR IMAGE QUALITY).

OAK RECIPIENTS ARE CAUTIONED THAT THE INITIAL SCAN OF THE PHOTOGRAPHY IS BEING ACCOMPLISHED IN A SHORT TIME AND PRIOR TO FINAL REFINEMENT OF EPHEMERAL DATA. CONSEQUENTLY, FUTURE DETAILED ANALYSIS MAY RESULT IN MINOR ALTERATIONS.

TOP SECRET CHESS RUFF

25X1

Page Denied

Next 3 Page(s) In Document Denied

Highlights



TOP SECRET CHESS RUFF

25X1
25X1

MISSION 4016 13-16 MARCH 1965



HIGHLIGHTS

1. ICBM COMPLEXES

ON MISSION 4016, 7 OF THE 25 DEPLOYED COMPLEXES WERE COVERED BY CLOUD-FREE PHOTOGRAPHY WITH GROUND SNOW COVER. DOMBAROVSKIY, DROVYANAYA, KOZELSK, OLOVYANNAYA AND TATISHCHEVO WERE COMPLETELY COVERED. KARTALY, PLESETSK, UZHUR, GLADKAYA, AND PERM WERE PARTIALLY COVERED AND DETAIL AT UZHUR, GLADKAYA, AND PERM WAS ALSO LIMITED BY SCATTERED CLOUDS.

25X1

LAUNCH GROUP B AT TATISHCHEVO AND A NEW LAUNCH GROUP, GROUP G, AT PERM CAN BE CONFIRMED AND AT LEAST 3 SITES HAVE BEEN NEWLY IDENTIFIED AT DROVYANAYA.

GLADKAYA IS REPORTED IN THIS OAK.

THE REMAINING 15 COMPLEXES WERE EITHER CLOUD-COVERED OR NOT COVERED.

TYURATAM MISSILE TEST CENTER WAS COVERED BY SCATTERED TO HEAVY CLOUDS WITH COMPLEXES A, B AND J IDENTIFIED ONLY.

2. ROZHDESTVENKA MRBM LAUNCH SITE



25X1

SITE IS INACTIVE AND SNOW COVERED.

3. OLENEGORSK SAM SITE (MISSILE BONUS)

A COMPLETED SA-3 SAM SITE IS NEWLY IDENTIFIED 21 NM ESE OF OLENEGORSK AT 68-03-30N 034-13-30E.

25X1

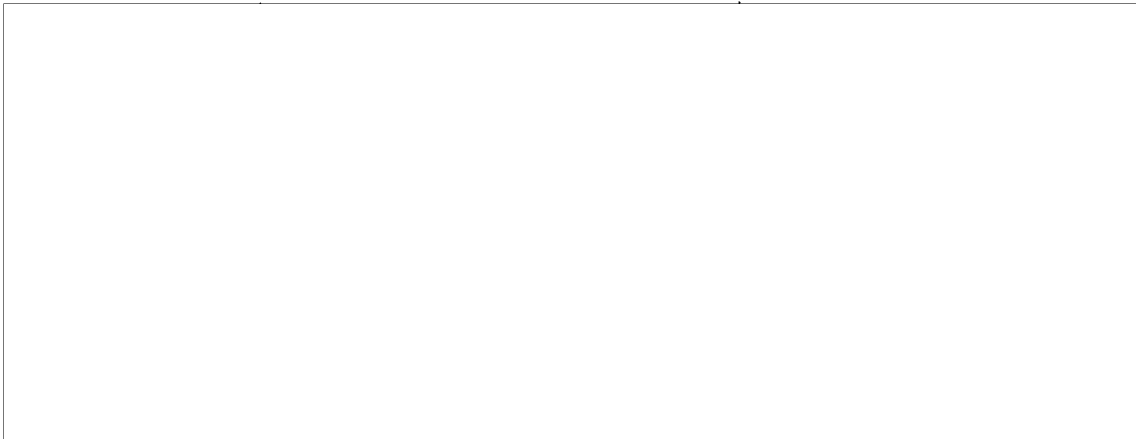


TOP SECRET CHESS RUFF

TOP SECRET CHESS RUFF

MISSION 4016 13-16 MARCH 1965

25X1



25X1

STATUS OF COMOR TARGET READOUT

FIFTY-THREE COMOR TARGETS WERE OBSERVED DURING THE OAK REPORTING PERIOD AND ARE CONTAINED IN THIS OAK.

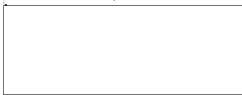
TOP SECRET CHESS RUFF

25X1

Missiles

TOP SECRET CHESS RUFF

MISSION 4016 13-16 MARCH 1965



25X1
25X1

MISSILES

TYURATAM LAUNCH COMPLEX A (SITES 1, 15) UR 4555N 06320E

IDENTIFICATION ONLY.



25X1

25X1

TYURATAM LAUNCH COMPLEX B (SITES 2,16,17) UR 4559N 06333E

LAUNCH AREA B2 CAN BE IDENTIFIED ONLY. REST OF COMPLEX IS NOT COVERED BY PHOTOGRAPHY.



25X1

TYURATAM COMPLEX J UR 4554N 06316E

IDENTIFICATION ONLY.



25X1

TYURATAM MAIN SUPPORT BASE UR 4538N 06317E

IDENTIFICATION ONLY.



25X1

GLADKAYA ICBM LAUNCH GROUP F UR 5613N 09214E

LAUNCH GROUP F IS COVERED BY FAIR QUALITY MONOSCOPIC PHOTOGRAPHY. POSSIBLE SITE F8 IS THE ONLY LAUNCH SITE VISIBLE. HEAVY CLOUDS OBSCURE ALL OTHER COMPONENTS OF THE LAUNCH GROUP. POSSIBLE SITE F8 REMAINS ACTIVE WITH ACCESS ROADS CLEARED OF SNOW. NO SIGNIFICANT CHANGE

MONOSCOPIC PHOTOGRAPHY AND GROUND SNOW PRECLUDE INTERPRETATION OF CONSTRUCTION DETAILS.



25X1

25X1

ZHITOMIR MRBM LAUNCH SITE 2 UR 5010N 02816E

SITE IS ACTIVE AND ERECTORS ARE VISIBLE ON 4 PADS. SCATTERED CLOUDS PRECLUDE DETAILED INTERPRETATION OF



25X1

TOP SECRET CHESS RUFF



25X1

MISSION 4016 13-16 MARCH 1965

FACILITIES. NO APPARENT CHANGE IN ESTABLISHED MENSURATION.



25X1

BERDICHEV MRBM LAUNCH SITE

UR 5005N 02822E

SITE IS ACTIVE AND ERECTORS ARE VISIBLE ON ALL 4 PADS. AN UNIDENTIFIED LONG OBJECT REMAINS IN FRONT OF ONE OF THE READY BUILDINGS. SCATTERED CLOUDS PRECLUDE DETAILED INTERPRETATION OF FACILITIES. NO CHANGE IN ESTABLISHED MENSURATION.



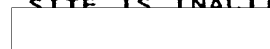
25X1

25X1

ROZHDESTVENKA MRBM LAUNCH SITE

UR 4547N 13343E

SITE IS INACTIVE AND SNOW COVERED. NO CHANGE SINCE JAN 65 APPARENT IN THE LAUNCH AREA.



25X1

25X1

UGOLNYY MRBM LAUNCH SITE

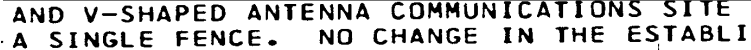
UR 6447N 17756E

MISSILE ERECTORS ARE VISIBLE ON ALL LAUNCH PADS. IN ADDITION, 2 UNIDENTIFIED PIECES OF EQUIPMENT CAN BE SEEN ON THE NE LAUNCH PAD. CONSTRUCTION IS APPARENTLY COMPLETE BETWEEN THE NE LAUNCH PADS. CONSIDERABLE VEHICULAR ACTIVITY IS OBSERVED WITHIN THE LAUNCH SITE AND SITE SUPPORT FACILITY. THE ROADS WITHIN THE SITE HAVE BEEN CLEARED OF SNOW.

NO CHANGE IS OBSERVED SINCE [REDACTED] APR 64 [REDACTED]

[REDACTED] IN THE HF COMMUNICATIONS RECEIVING SITE WITH 4 FISHBONE RECEIVING ANTENNAS AND 2 V-SHAPED ANTENNAS, PROBABLY LOG PERIODICS, LOCATED APPROXIMATELY 1 NM SE OF THE LAUNCH SITE. AN UNDETERMINED NUMBER OF ANTENNA MASTS, PROBABLY DOUBLE RHOMBICS, LOCATED IMMEDIATELY SE OF THE SITE SUPPORT FACILITY ARE NEWLY IDENTIFIED.

[REDACTED] THE FISHBONE AND V-SHAPED ANTENNA COMMUNICATIONS SITE IS SECURED BY A SINGLE FENCE. NO CHANGE IN THE ESTABLISHED MENSURATION FOR MRBM LAUNCH AREA.



25X1

25X1

25X1

25X1

25X1



TOP SECRET CHESS RUFF

MISSION 4016 13-16 MARCH 1965



25X1
25X1

(ATTACHMENT 1)



25X1

KURDZHIPS KAYA MRBM LAUNCH SITE

UR 4431N 04000E

SITE IS ACTIVE WITH AT LEAST 23 VEHICLES OBSERVED. ERECTORS ARE VISIBLE ON EACH PAD. TWO LONG UNIDENTIFIED OBJECTS ARE VISIBLE IN FRONT OF THE WESTERN 2 READY BUILDINGS. NO NEW CONSTRUCTION VISIBLE. NO CHANGE IN ESTABLISHED MENSURATION.



25X1

25X1

SHIRVANSKAYA MRBM LAUNCH SITE

UR 4425N 03954E

NO APPARENT CHANGE IN FACILITIES SINCE [REDACTED] JAN 65. NO CHANGE IN ESTABLISHED MENSURATION. A FEW POSSIBLE TRUCKS AND TRACAGE ARE DISCERNIBLE AT THE LAUNCH SITE.



25X1

25X1

SLONIM SUSP ALTERNATE MRBM SITE (BYTEN)

UR 5244N 02531E

IDENTIFICATION ONLY.



25X1

LEBEDIN FIXED FIELD IRBM SITE

UR 5032N 03428E

THE PATTERN OF CLEARINGS IN THE FOREST AT THE ABOVE LISTED COORDINATES IS NOT CONSIDERED TO BE A FIXED FIELD IRBM SITE.



25X1

VOTKINSK ARMS MACHINE AND STEEL PLT 235

UR 5703N 05359E

NO INDICATIONS OF MISSILE OR MISSILE-ASSOCIATED PRODUCTION ACTIVITY DISCERNIBLE. NO MISSILE-HANDLING EQUIPMENT DISCERNIBLE.



25X1

TOP SECRET CHESS RUFF

MISSION 4016 13-16 MARCH 1965



25X1



25X1

KUYBYSHEV AIRFRAME PLANT STALIN 1

UR 5313N 05018E

25X1

NO NEW CONSTRUCTION OR INDUSTRIAL FEATURES OBSERVED SINCE [REDACTED] JAN 65. TWO PROBABLE RAIL CARS ARE LOCATED BETWEEN THE HIGH BAY AND FINAL ASSEMBLY BUILDINGS, THREE RAIL CARS 75-80 FEET LONG AND ONE RAIL CAR 60 FEET LONG ARE LOCATED IN THE EASTERN PART OF THE PLANT.

25X1



25X1

OMSK RKT ENG TEST FAC GORNAYA BITIYA

UR 5525N 07317E

CONSTRUCTION CONTINUES ON THE SECOND TEST STAND, WHICH WILL BE SERVED BY A H-SHAPED APPROACH RAMP. A CONTROL BUILDING AND A SMALLER SUPPORT BUILDING HAVE BEEN ERECTED NEAR THE STAND. THE ORIGINAL TEST STAND APPEARS TO BE UNCHANGED. TEN SMALL VERTICAL TANKS IN A RECTANGULAR STRUCTURE ARE LOCATED BEHIND THIS STAND. POSSIBLE ENGINE CHECKOUT, COMPONENT TEST, AND FUEL STORAGE BUILDINGS ARE IDENTIFIABLE. AT LEAST 20 RAIL CARS ARE VISIBLE WITHIN THE AREA. A BRIDGE ACROSS THE RAVINE WHICH RUNS THROUGH THE AREA IS IN AN EARLY STAGE OF CONSTRUCTION JUST OUTSIDE THE SOUTH SECURITY FENCE. NO GROUND HANDLING EQUIPMENT IDENTIFIED.

(ATTACHMENT 2)



25X1

KAZAN AIRCRAFT ENGINE PLANT 16

UR 5551N 04907E

NO TEST STANDS OR MISSILE-RELATED EQUIPMENT OBSERVED.



25X1

KUYBYSHEV AIRCRAFT ENGINE PLT FRUNZE 24

UR 5312N 05017E

CONSTRUCTION CONTINUES ON TEST CELLS. NO MISSILE-ASSOCIATED ACTIVITY OBSERVED.



25X1



25X1

TOP SECRET CHESS RUFF

MISSION 4016 13-16 MARCH 1965



25X1

REVYAKINO SUSPECT SSM SITE

UR 5423N 03732E

AREA COVERED ON CLOUD-FREE, FAIR QUALITY PHOTOGRAPHY. NO SSM ACTIVITY IDENTIFIABLE IN VICINITY OF SUSPECT SSM SITE.



25X1

25X1

KOMSOMOLSK SHIPYARD AMUR 199

UR 5033N 13702E

NO APPARENT CHANGE IN FACILITIES SINCE AUG 64. NO EVIDENCE OF NUCLEAR SS CONSTRUCTION VISIBLE.

VESSELS -- 1 UNIDENTIFIED COMBATANT APPROXIMATELY 450 X 50 FT WITH SUPERSTRUCTURE UNDER CONSTRUCTION IN WET DOCK, A FLOATING DRYDOCK (PROBABLY OCCUPIED), AND 2 MERCHANT VESSELS.



25X1

25X1

YOKANGA NAVAL BASE AND SHIP REPAIR YARD

UR 6804N 03932E

NO APPARENT CHANGE IN FACILITIES SINCE JUL 63. NO CONSTRUCTION ACTIVITY OBSERVED.

VESSELS -- 8 W-CLASS SS, 1 PROBABLE N-CLASS SSN, 1 PROBABLE ATREK-CLASS ASL, 1 PROBABLE DNEPR-CLASS AR, 2 POSSIBLE KOLA-CLASS DE, 2 UNIDENTIFIED PATROL CRAFT, ONE 340-X 45-FT PROBABLE TARGET BARGE, AND NUMEROUS SMALL SURFACE CRAFT.

(ATTACHMENT 3)



25X1

25X1

OLENEGORSK SAM SITE

UR 6803N 03413E BONUS 1

A COMPLETED SA-3 SAM SITE IS NEWLY IDENTIFIED 21 NM ESE OF OLENEGORSK AT 68-03-30N 034-13-30E.



25X1



25X1

**Air
Facilities**

TOP SECRET CHESS RUFF

MISSION 4016 13-16 MARCH 1965

25X1

AIR FACILITIES

UKRAINA AIRFIELD

UR 5110N 12826E

25X1

NO APPARENT CHANGE IN FACILITIES SINCE [REDACTED]
DEC 64. RUNWAY, TAXIWAYS, AND ROAD [REDACTED]
[REDACTED] ARE CLEARED OF SNOW. NO NEW
CONSTRUCTION, OR ASM ACTIVITY OBSERVED.

25X1

25X1

25X1

AIRCRAFT -- 12 BISON, 1 BADGER, 2 CAT/CUB, AND 1 CAB ON
HARDSTANDS ALONG WEST TAXIWAY, 16 BISON ON HARDSTANDS
ALONG EAST TAXIWAY, 15 BISON ON SE PARKING APRON, AND 1
BISON ON LOADING HARDSTAND.

25X1

PANG-FDU AIRFIELD

CH 3256N 11722E

25X1

NO APPARENT CHANGE IN FACILITIES SINCE [REDACTED]
JUN 64.

AIRCRAFT -- 7 FAGOT/FRESCO, 20 MOOSE/MAX-TYPE, 4 CAB,
AND 3 COLT.

25X1

HSIN-CHIN AIRFIELD

CH 3927N 12201E

25X1

NO APPARENT CHANGE IN FACILITIES OBSERVED ON FAIR
QUALITY, NON-STEREO PHOTOGRAPHY SINCE [REDACTED] OCT
64. TAXIWAY, HARDSTANDS, AND PARKING APRON ARE
PARTIALLY CLOUD COVERED.

AIRCRAFT -- 20 PROBABLE FAGOT/FRESCO AND 1 PROBABLE
CRATE.

25X1

SAN-SHIH-LI-PAO AIRFIELD

CH 3917N 12146E

25X1

NO APPARENT CHANGE IN FACILITIES SINCE [REDACTED]
APR 63. ONLY EAST END OF NW/SE RUNWAY VISIBLE. NO
RADAR FACILITIES OBSERVED.

AIRCRAFT -- NONE OBSERVED.

25X1

TOP SECRET CHESS RUFF

MISSION 4016 13-16 MARCH 1965

[Redacted]

[Redacted]

25X1

[Redacted]

25X1

HAI-CHOU AIRFIELD WEST

CH 3435N 11852E

NO APPARENT CHANGE IN FACILITIES SINCE [Redacted] JUN 64. NO RADAR FACILITIES DISCERNIBLE.

25X1

25X1

AIRCRAFT -- NONE OBSERVED.

[Redacted]

25X1

YEN-TAI AIRFIELD SOUTH

CH 3724N 12121E

IDENTIFICATION ONLY.

[Redacted]

25X1

CAMILO CIENFUEGOS AIRFIELD

CU 2229N 07955W

NO APPARENT CHANGE IN FACILITIES SINCE [Redacted] NOV 64. RUNWAY IS SERVICEABLE. CONSTRUCTION STATUS OF EARTH-COVERED HANGARETTE REPORTED UNDER CONSTRUCTION ON [Redacted] CANNOT BE DETERMINED. NO RADAR OR COMMUNICATIONS FACILITIES OBSERVED.

25X1

25X1

DEFENSES INCLUDE AN OCCUPIED 6-GUN LIGHT AAA SITE SOUTH OF WSW END OF RUNWAY, A PROBABLY OCCUPIED 6-GUN LIGHT AAA SITE NORTH OF ENE END OF RUNWAY, AND AN OCCUPIED 6-GUN LIGHT AAA SITE NORTH OF CENTER OF RUNWAY. NO SAMS, AIRCRAFT IN CRATES, OR HELOS OBSERVED.

AIRCRAFT -- 29 FAGOT/FRESCO, 1 SMALL STRAIGHT-WING, AND 6 HOUND (2 WITHOUT ROTORS).

[Redacted]

25X1

KENDARI AIRFIELD

ID 0405S 12225E

NO APPARENT CHANGE IN FACILITIES OBSERVED ON FAIR-TO-GOOD QUALITY PHOTOGRAPHY SINCE [Redacted] JAN 65.

25X1

AIRCRAFT -- NONE OBSERVED IN CLOUD-FREE AREAS.

[Redacted]

25X1

[Redacted]

25X1

**Nuclear
Energy**

Page Denied

Next 1 Page(s) In Document Denied

**Naval
Activity /
Ports**



TOP SECRET CHESS RUFF
MISSION 4016 13-16 MARCH 1965



25X1

NAVAL ACTIVITY/PORTS

TA-HSIEH TAD NAVAL BASE

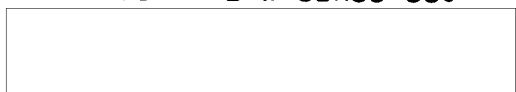
CH 2953N 12157E M4A0013

NO APPARENT CHANGE IN FACILITIES SINCE
JAN 65.



25X1

VESSELS 2 W-CLASS SS.



25X1



25X1

**Biological/
Chemical
Warfare**

Page Denied

Next 2 Page(s) In Document Denied

**Electronics/
Communications**

TOP SECRET CHESS RUFF

MISSION 4016 13-16 MARCH 1965

25X1
25X1

ELECTRONICS/COMMUNICATIONS

LADYZHENKA COMMUNICATIONS SITE

UR 5056N 06845E

A SMALL FACILITY CONTAINING 7 VEHICLES/VANS PARKED IN A LINE AND 3 OR 4 POSSIBLE BUILDINGS IS LOCATED AT THESE COORDINATES. NO ANTENNAS OR CONSTRUCTION ACTIVITY OBSERVED.

25X1

25X1

TYURATAM RADIO STATION 2

UR 4536N 06316E

NO APPARENT CHANGE SINCE [REDACTED] SEP 64.

25X1

25X1

TYURATAM INSTRUMENTATION SITE

UR 5058N 06836E

OPERATIONS/SUPPORT FACILITY CONTAINS APPROXIMATELY 20 BUILDINGS AND A SMALL POSSIBLE INSTRUMENTATION/COMMUNICATIONS AREA WITH 4 UNIDENTIFIED OBJECTS. THIRTY-TWO VEHICLES ARE PARKED IN 3 AREAS OF THE FACILITY.

INTERSECTING LANDING STRIPS CAN BE IDENTIFIED ONLY. NO ANTENNAS OR CONSTRUCTION ACTIVITY OBSERVED.

25X1

25X1

**Military
Activity**

TOP SECRET CHESS RUFF

MISSION 4016 13-16 MARCH 1965

25X1
25X1

MILITARY ACTIVITY

NIEN-TZU-SHAN MUNITIONS PLANT CH 4731N 12252E

25X1

APPROXIMATELY 1 NM NE OF NIEN-TZU-SHAN.

EXTENSIVE SECURED AREA CONTAINS APPROXIMATELY 75 MAJOR PROCESSING AND STORAGE BUILDINGS AND APPROXIMATELY 50 DISPERSED PROCESSING OR STORAGE BUILDINGS (36 APPEAR REVETTED).

A SECURED EXPLOSIVES TESTING SITE LOCATED APPROXIMATELY 4 NM SSE OF THE PLANT CONTAINS 12 REVETTED TEST PADS OR PITS IN 2 ROWS. WHETHER OR NOT THE TEST SITE IS ACTIVE CANNOT BE DETERMINED.

A PREVIOUSLY REPORTED TEST SITE UNDER CONSTRUCTION 5 NM NE OF THE PLANT IS CLOUD COVERED. NO CONSTRUCTION ACTIVITY OBSERVED.

[Redacted]

25X1

DOS CAMINOS MILITARY CAMP GU 2014N 07547W

NO APPARENT CHANGE IN FACILITIES SINCE [Redacted] JAN 65. VEHICLES/EQUIPMENT -- 39 PROBABLE TRACKED PRIME MOVERS, 48 PROBABLE CARGO TRUCKS, 64 OTHER VEHICLES, 34 FA PIECES, AND 12 LIGHT AAA PIECES OBSERVED. AN UNRETTED, 6-GUN LIGHT AAA SITE IS LOCATED IN THE SE PART OF THE CAMP.

25X1

[Redacted]

25X1

TBILISI ARMY BARRACKS SABURTALO UR 4143N 04446E

NO MILITARY INSTALLATION OBSERVED IN CLOUD-FREE AREAS.

[Redacted]

25X1

LENINAKAN ARMY BARRACKS NORTH UR 4048N 04349E

IN NORTH PART OF LENINAKAN.

INSTALLATION CONTAINS 2 U-SHAPED ADMINISTRATION BUILDINGS, 23 BARRACKS, 3 BARRACKS/QUARTERS, 41 PROBABLE QUARTERS, 12 STORAGE BUILDINGS, 6 VEHICLE

25X1

[Redacted]

TOP SECRET CHESS RUFF

MISSION 4016 13-16 MARCH 1965

25X1

SHEDS, 2 ATHLETIC FIELDS, AND APPROXIMATELY 25 SUPPORT BUILDINGS. AT LEAST 140 PROBABLE VEHICLES OBSERVED. HEAVY TRACKAGE INDICATES ENTIRE INSTALLATION IS OCCUPIED.

25X1

LENINAKAN ARMY BARRACKS SOUTHWEST

UR 4046N 04349E

25X1

IN SW PART OF LENINAKAN.

INSTALLATION CONTAINS 3 ADMINISTRATION BUILDINGS, 14 BARRACKS, AT LEAST 22 QUARTERS, 7 STORAGE BUILDINGS, 8 VEHICLE SHEDS, AND APPROXIMATELY 15 SUPPORT BUILDINGS. AT LEAST 75 PROBABLE TRUCKS OBSERVED. HEAVY TRACKAGE INDICATES ENTIRE INSTALLATION IS ACTIVE.

25X1

TBILISI ARMY DEPOT PUG 20

UR 4141N 04452E

NO NEW CONSTRUCTION, CHANGES IN FACILITIES, EQUIPMENT, OR INDICATIONS OF MILITARY ACTIVITY OBSERVED IN CLOUD-FREE PORTIONS. ONLY THE NW PART OF THE INSTALLATION IS OBSERVED ON FAIR QUALITY PHOTOGRAPHY.

25X1

25X1

Complexes

TOP SECRET CHESS RUFF

MISSION 4016 13-16 MARCH 1965



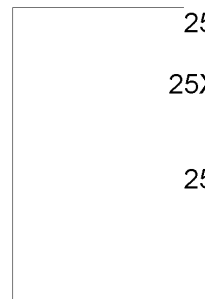
25X1

COMPLEXES

HSIA-MEN COMPLEX

CH 2427N 11805E

NO APPARENT CHANGE SINCE [REDACTED] JAN 65. ENTIRE ISLAND IS COVERED ON GOOD QUALITY, NON-STEREO PHOTOGRAPHY.



25X1

25X1

25X1

MU-TAN-CHIANG COMPLEX

CH 4435N 12936E

THE RAIL-AND ROAD-SERVED COMPLEX IS COVERED ON GOOD QUALITY NON-STEREO PHOTOGRAPHY.

MAJOR INDUSTRIAL TARGETS INCLUDE RAILROAD SHOPS, HEAT AND CHEMICAL PROCESSING INDUSTRIES, A HEAVY FABRICATION PLANT, A LARGE LIGHT FABRICATION/ASSEMBLY PLANT, AND NUMEROUS LIGHT INDUSTRIES. THERE IS A MUNITIONS LOADING PLANT WHICH IS PROBABLY PART OF MU-TAN-CHIANG AMMO DEPOT EAST, I-HO [REDACTED]

MILITARY TARGETS INCLUDE 2 BARRACKS AREAS, AT LEAST 4 MILITARY STORAGE AREAS, AND 1 MAJOR AIRFIELD.

INDUSTRIAL ACTIVITY APPEARS TO BE AT A HIGH LEVEL.



25X1

25X1



25X1

**Other
Activity**

Page Denied

Attachments

TOP SECRET CHESS RUFF

MISSION 4016, 13-16 MARCH 1965

25X1

25X1

ATTACHMENT 1



2 V-SHAPED AND
FOUR FISHBONE
ANTENNAS



NEW PROBABLE
DOUBLE RHOMBIC
ANTENNAS

UNIDENTIFIED
EQUIPMENT ON PAD

MRBM SITE, UGOLNYY, USSR

NPIC J-9837 13 '65

25X1

TOP SECRET CHESS RUFF

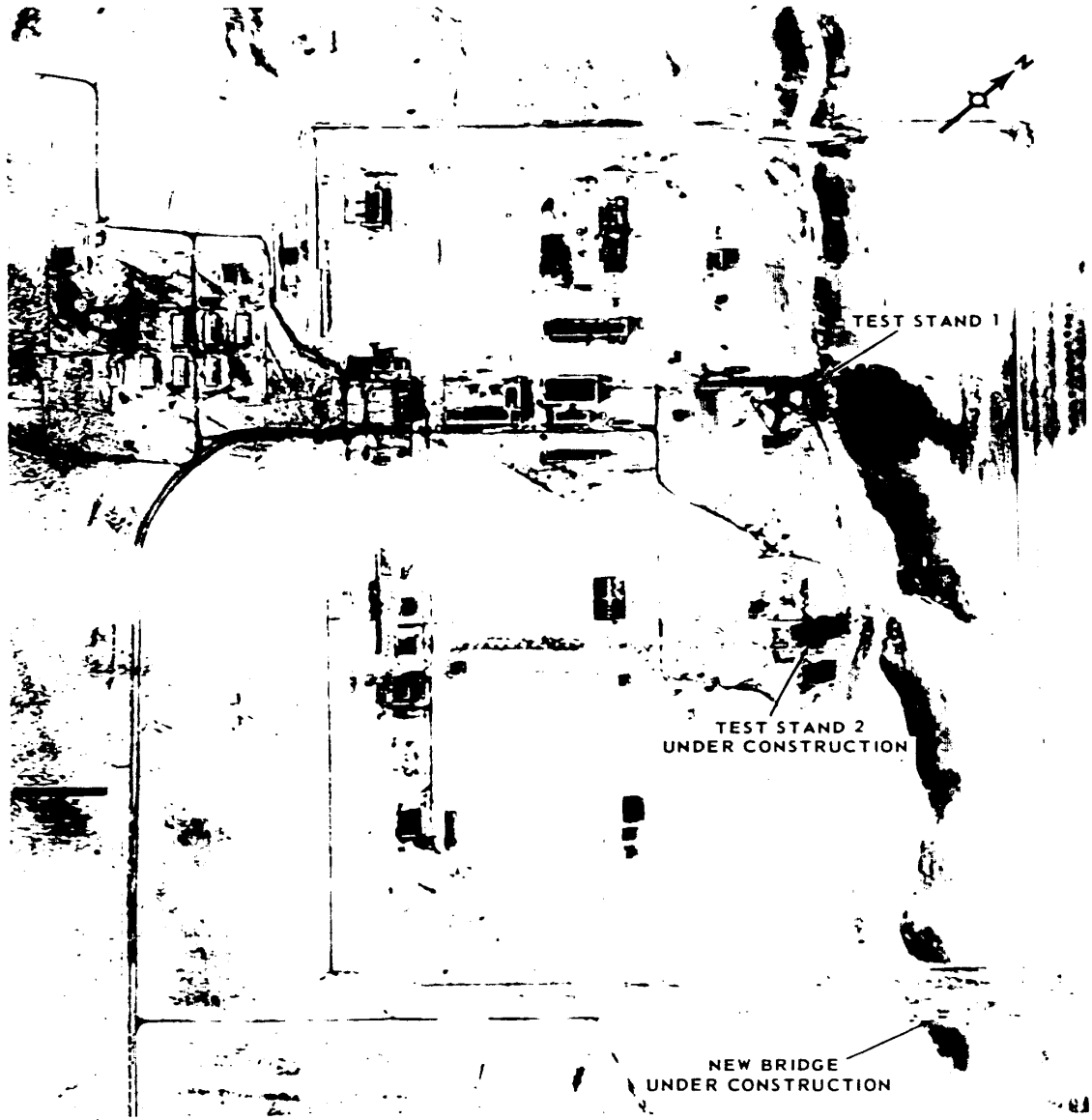


TOP SECRET CHESS RUFF

MISSION 4016, 13-16 MARCH 1965

ATTACHMENT 2

25X1
25X1



ROCKET ENGINE TEST FACILITY, OMSK, USSR

REF ID: A68181

TOP SECRET CHESS RUFF

25X1

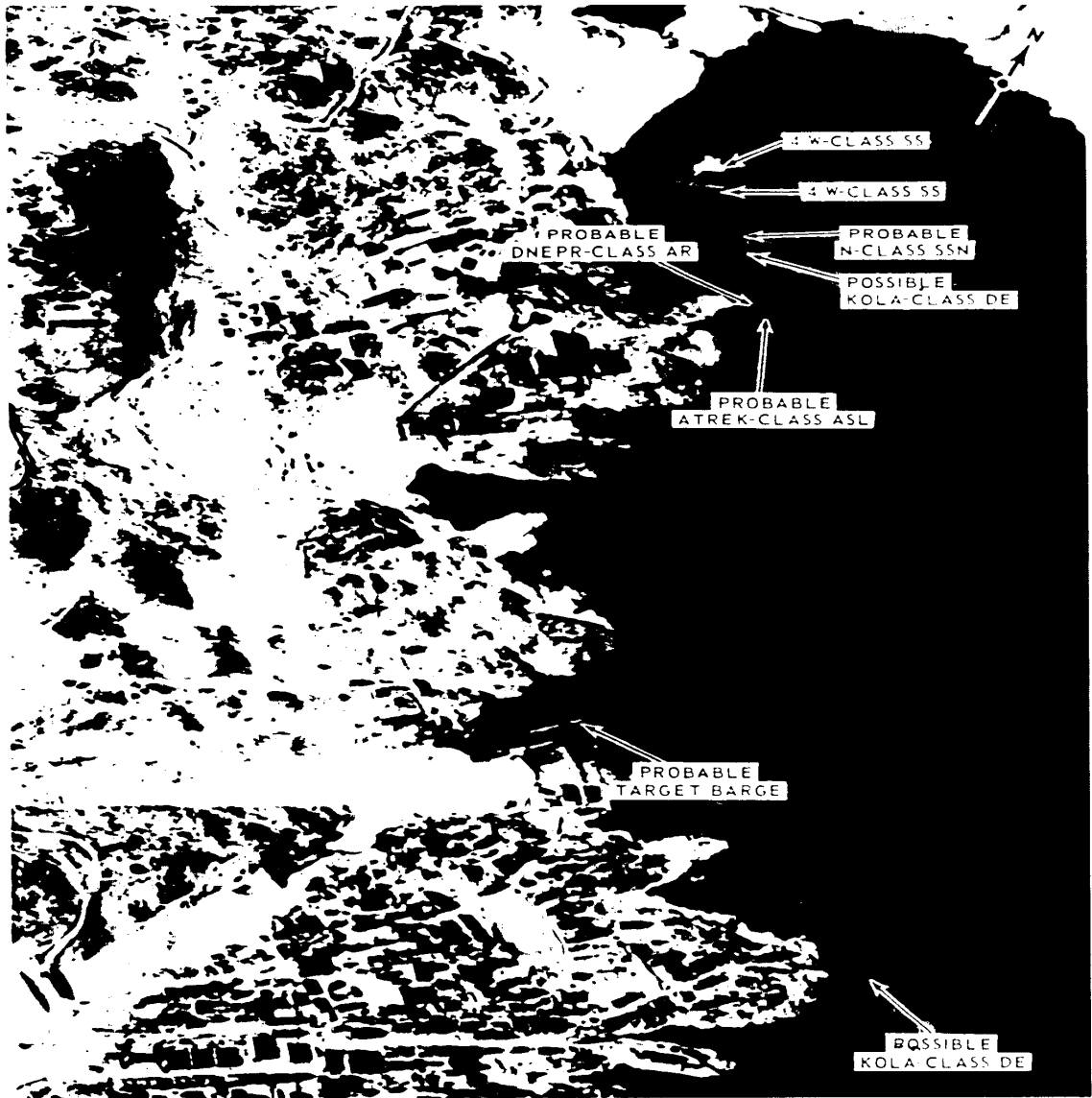
TOP SECRET CHESS RUFF

MISSION 4016, 13-16 MARCH 1965

ATTACHMENT 3

25X1

25X1



NAVAL BASE AND SHIP REPAIR YARD, YOKANGA, USSR

25X1

TOP SECRET CHESS RUFF

Page Denied

Next 3 Page(s) In Document Denied

TOP SECRET

TOP SECRET

TOP SECRET

TOP SECRET