

ILLEGIB

~~TOP SECRET~~

16592

Approved For Release 2003/09/03 : CIA-RDP78T05439A000400390065-1

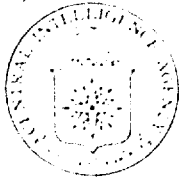
1 Page

March 1965

PHOTOGRAPHIC INTERPRETATION REPORT

# SURFACE-TO-AIR MISSILE (SAM) INSTALLATION SERIES

DECLASS REVIEW BY NIMA / DoD



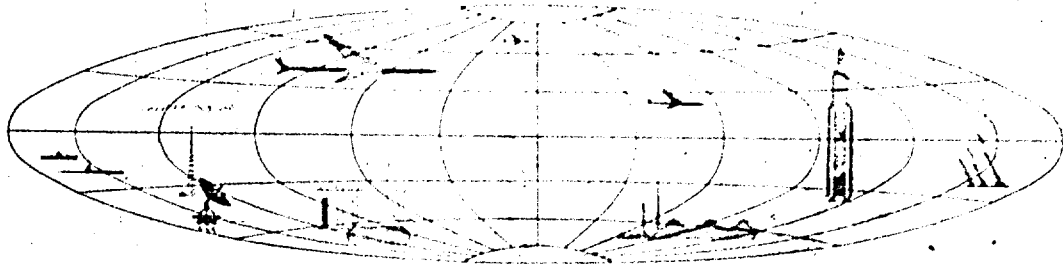
CIA



DIA



NATIONAL PHOTOGRAPHIC INTERPRETATION CENTER



~~TOP SECRET~~

For use only by authorized personnel of the Department of Defense

TOP SECRET

25X  
25X

NATIONAL PHOTOGRAPHIC INTERPRETATION CENTER

INSTALLATION NAME	GEO COORDS	PUBLICATION DATE
Chan-chiang Possible SA-2 SAM Site China	21-23-50N 110-11-35E	March 1965
	NPIC TARGET NO	BE NO
	0615-17A	None

25X1D

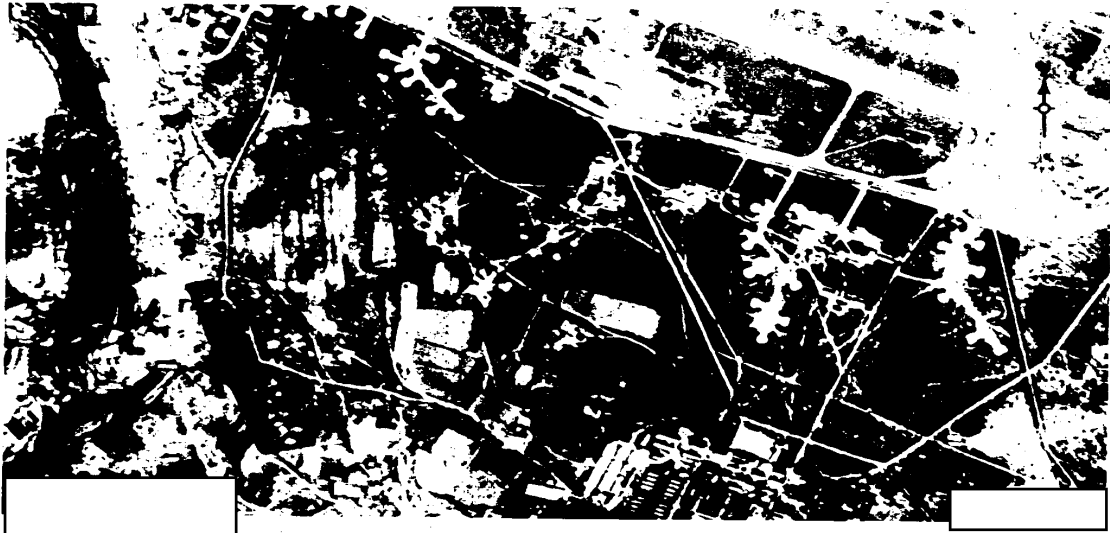
25X1D

AD AREA	NPIC PROJECT
CH	11054/65 (partial answer)

REFERENCES

USATC, Series 200, Sheet 0615-18HL, 2d ed, Dec 63 (S); NPIC/R-926/64 (TS)  
REQUIREMENT USIB-64

Location: 16.5 nm NW of Chan-chiang.  
Configuration: Undetermined, lacks service roads  
Status: Complete  
Launch Facilities: 4 unrevetted and unoccupied launch positions  
Electronic Facilities: Central guidance area is unrevetted, contains 1 small building  
Site Support Facilities: Possibly uses Sui-chi (Lei-pei) airfield facilities  
Security Measures: Site is within the security confines of Sui-chi (Lei-pei) airfield



25X1D

TOP SECRET

25X  
25X