

Page Denied

~~TOP SECRET~~

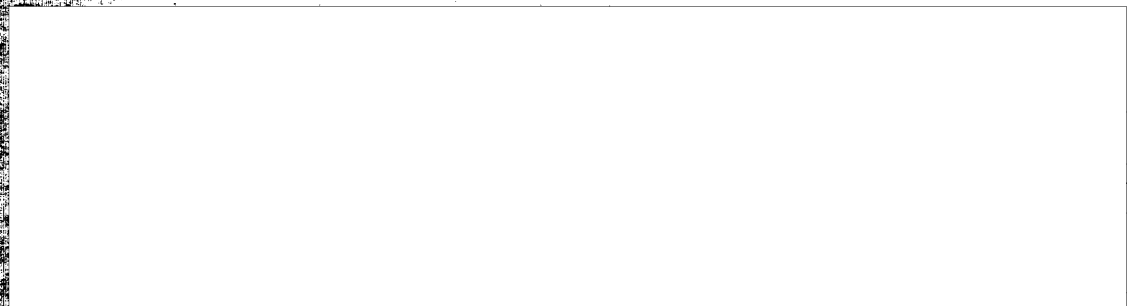
16142

January 1965

25X1

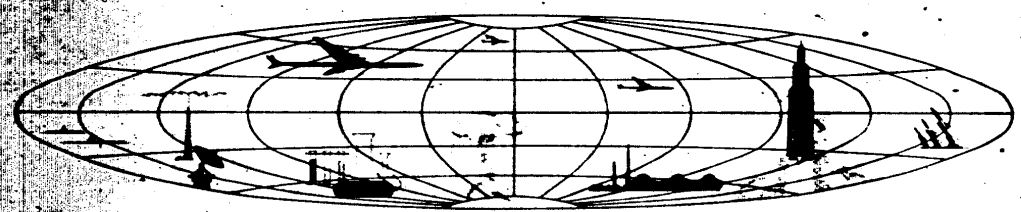
PHOTOGRAPHIC INTERPRETATION REPORT

SURFACE-TO-AIR MISSILE (SAM) INSTALLATION SERIES



25X1

NATIONAL PHOTOGRAPHIC INTERPRETATION CENTER



~~TOP SECRET~~

GROUP 1
Excluded from automatic
downgrading and declassification

TOP SECRET CHESS RUFF

25X1

NATIONAL PHOTOGRAPHIC INTERPRETATION CENTER

INSTALLATION NAME Kandalaksha SAM Site A30-2 USSR	GEO. COORDS. 67-12-45N 032-07-00E	PUBLICATION DATE January 1965
	NPIC TARGET NO. 0091-6	

25X1

25X1



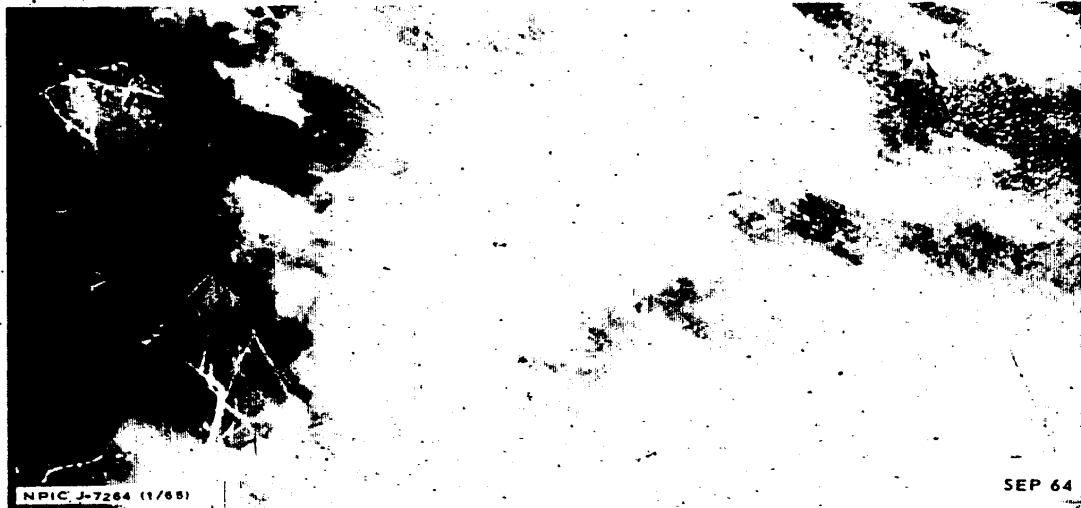
	AD AREA ZY-3-5	NPIC PROJECT 11523/64 (partial answer)
--	-------------------	---

25X1

REFERENCES
 USATC, Series 200, Sheet 0091-41L, 3d ed, Oct 63 (S); NPIC/R-926/64 (TS
 CHESS RUFF REQUIREMENT USIB-64; C-RR-82,014.

25X1

Location: 8 nm WNW of Kandalaksha
 Configuration: Undetermined, construction stage too early
 Status: Under construction
 Launch Facilities: 4 positions, revetted, unoccupied
 Electronic Facilities: None
 Site Support Facilities: None
 Security Measures: None



NPIC J-7244 (1/65)

SEP 64

25X1

TOP SECRET CHESS RUFF