

Page Denied

~~TOP SECRET~~

NPIC/R-671/64
August 1964

[Redacted]

Copy
6 Pages

PHOTOGRAPHIC INTERPRETATION REPORT

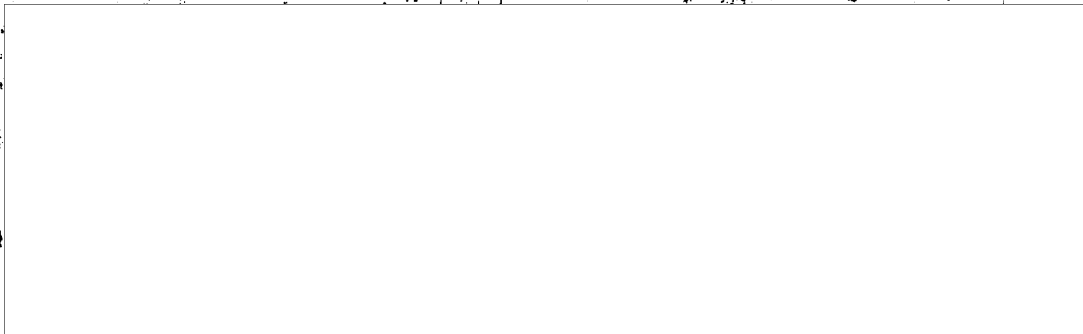
**ARMY BARRACKS
CHOP, USSR
CARPATHIAN MD**



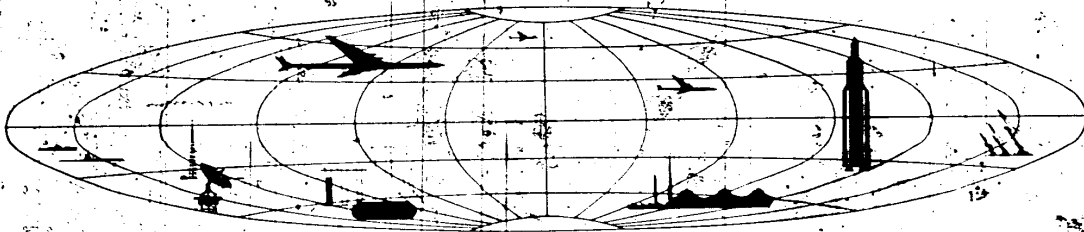
CIA



DIA



NATIONAL PHOTOGRAPHIC INTERPRETATION CENTER



~~TOP SECRET~~

GROUP 1
Excluded from automatic
downgrading and
declassification

25X1

25X1

Page Denied

TOP SECRET RUFF

NPIC/R-671/64

25X1

25X1

ARMY BARRACKS

(48 25N 022 13E)

CHOP, ZAKARPATSKAYA OBLAST, USSR

CARPATHIAN MD

BE No: None

AI No: None

JIB No: None

COMOR No: None

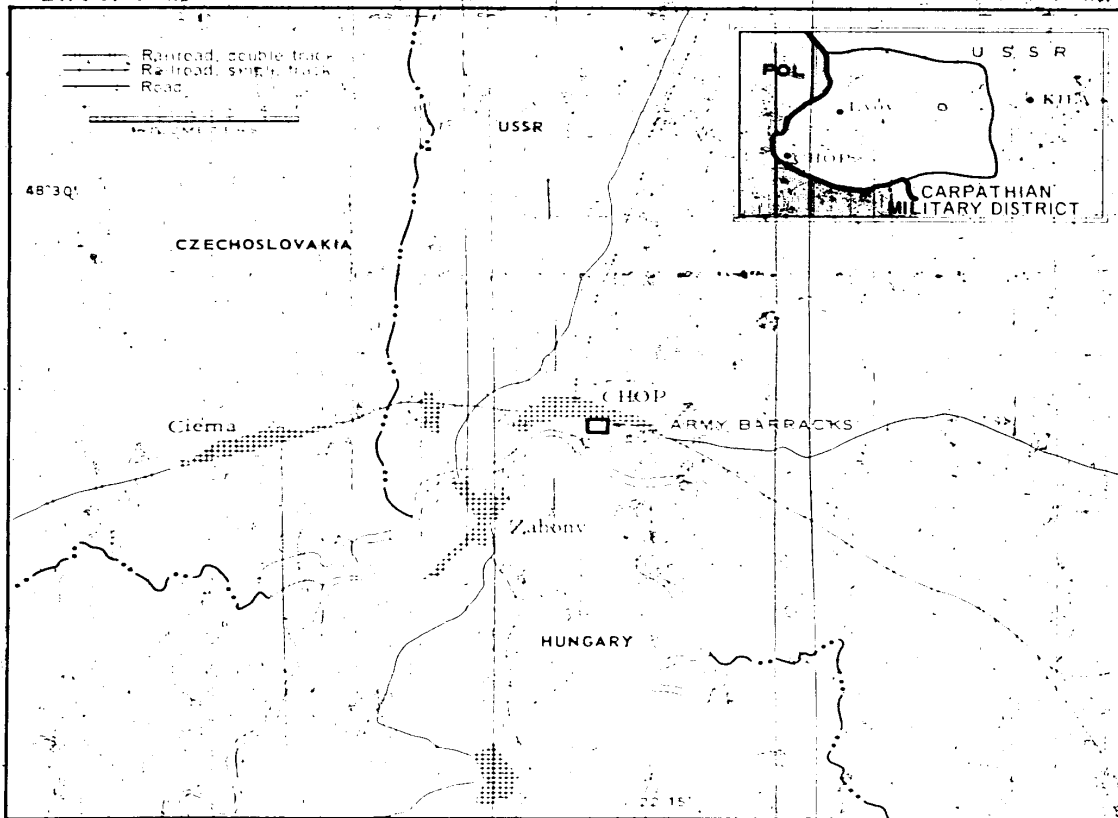
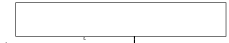


FIGURE 1. LOCATION OF ARMY BARRACKS IN CHOP.

TOP SECRET RUFF

TOP SECRET RUFF



SPIC/R-67L/64

25X1

25X1

SUMMARY

A small army barracks area is located on the eastern edge of Chop (Figure 1). The installation (Figures 2 and 3) consists of 10 barracks, two administration headquarters buildings, two maintenance sheds, and four miscellaneous storage buildings.

KEYHOLE [redacted] covered the installation in August 1960, and it has remained relatively unchanged since that time. This [redacted] June 1965, shows some minor changes in

Area 1. Two barracks buildings may have been torn down or remodeled into storage facilities. This barracks area probably serves a dual role as a barracks area for border guards and as military headquarters for the Chop railroad yards and transshipment area.

The installation was covered by five KEYHOLE missions between August 1960 and September 1963.

25X1

25X1

DESCRIPTION OF INSTALLATION

Railroad Service

The installation is in the immediate vicinity of the Chop marshalling yards and transshipment area, but it is not directly served.

Road Service

The installation is situated on a hard surface, all-weather road within Chop.

Administrative and Troop Housing Areas

Area D1 contains ten single-story 150- by 35-foot troop barracks. Area D2 contains two permanent multistory 400- by 50-foot head-

quarters-type buildings.

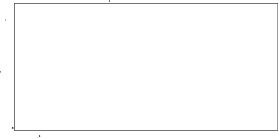
General Storage Area

Area E, in need, contains four permanent, single-story 75- by 25-foot miscellaneous storage buildings.

Equipment Storage/Maintenance Area

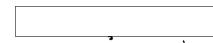
Area J contains one 350- by 300-foot motor pool, a small motor pool, and three 75- by 25-foot maintenance sheds, probably for administrative vehicles.

TOP SECRET RUFF



25X1

TOP SECRET RUFF



NPIC R-671 64

25X1

25X1

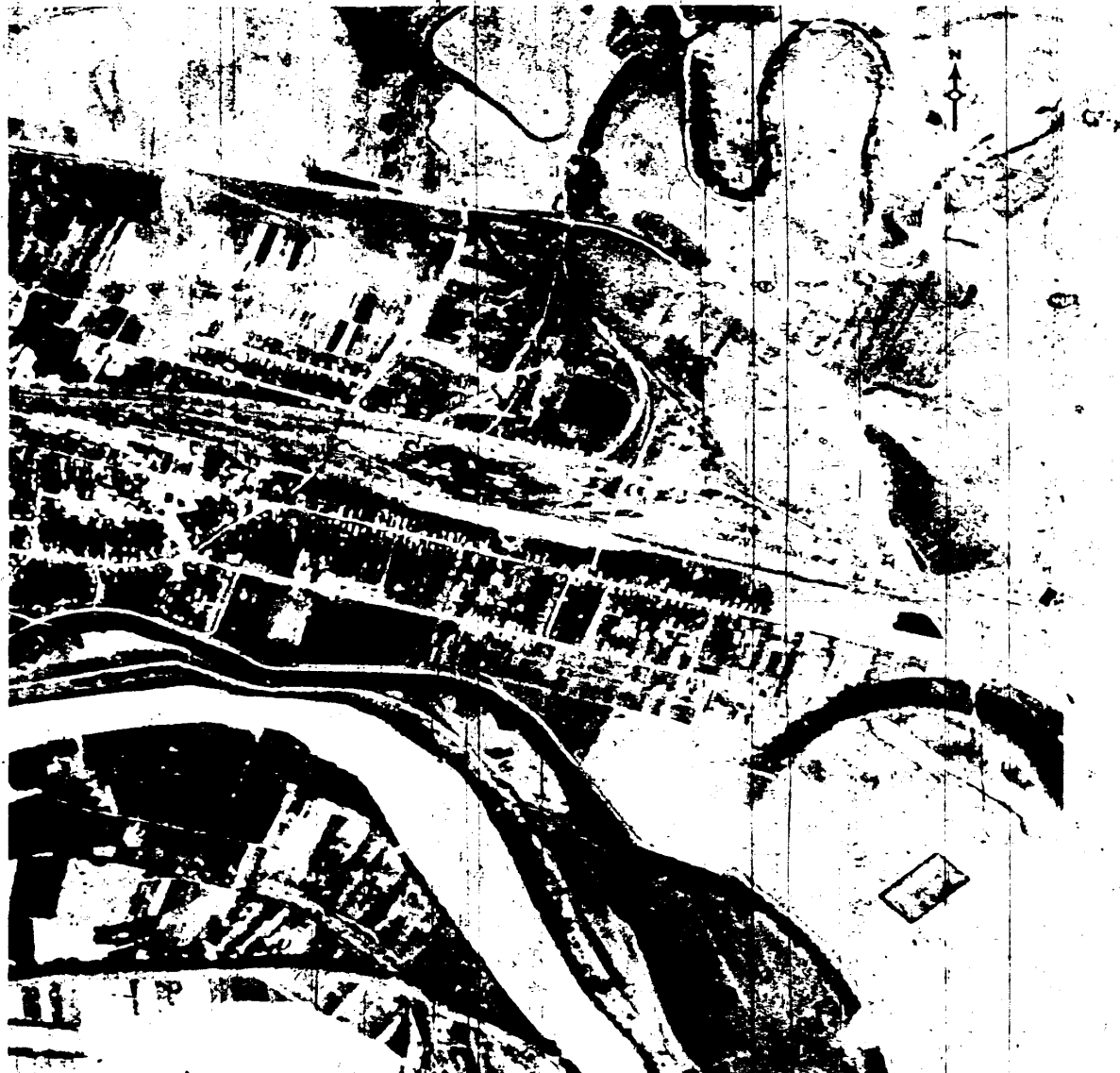


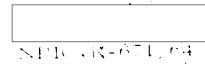
FIGURE 22. ARMY BARRACKS, CHINA, 1950. (JUNE 1950)

TOP SECRET RUFF

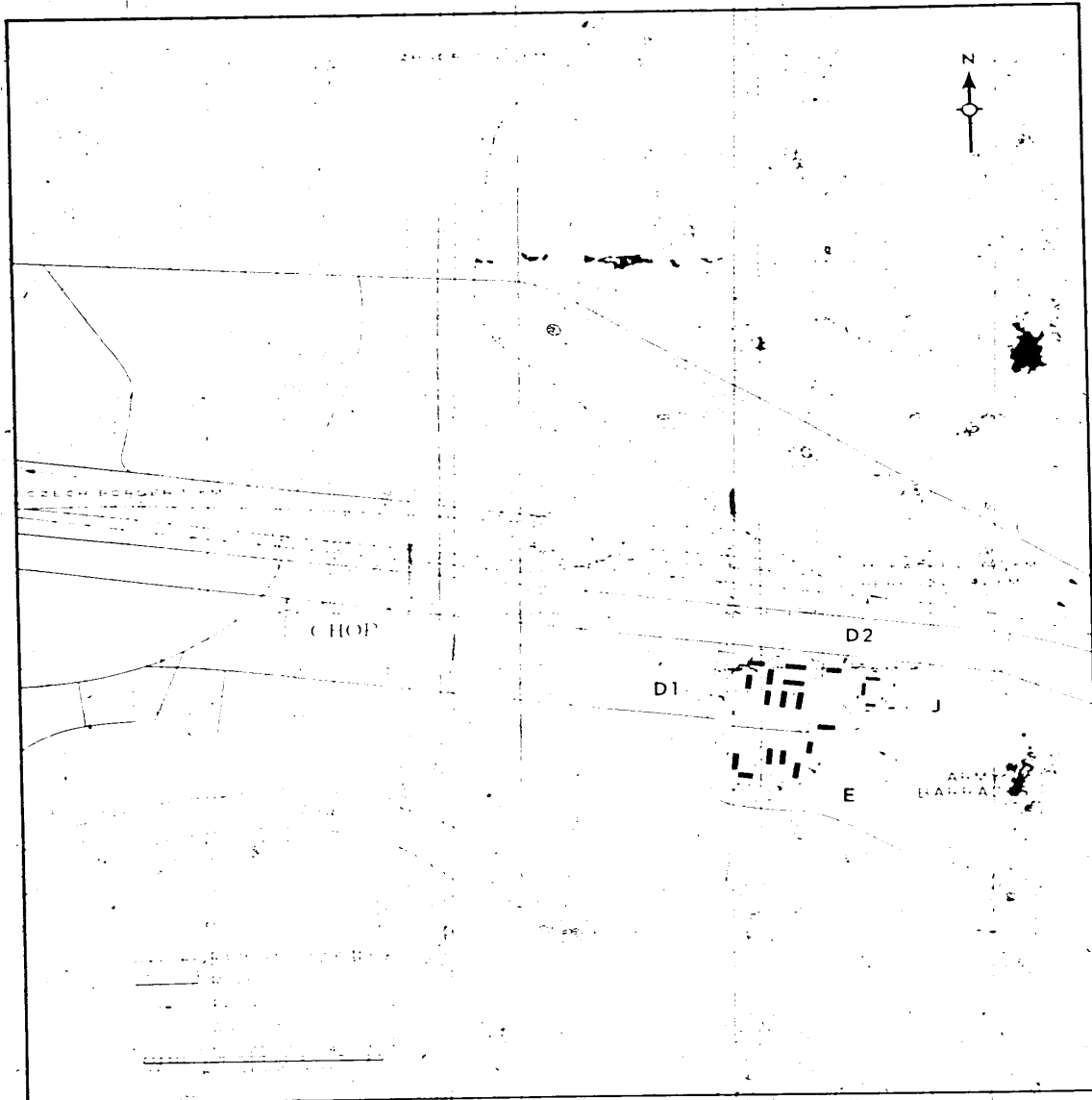


25X1

TOP SECRET RUFF



25X1
25X1



TOP SECRET RUFF

Page Denied