

**Page Denied**

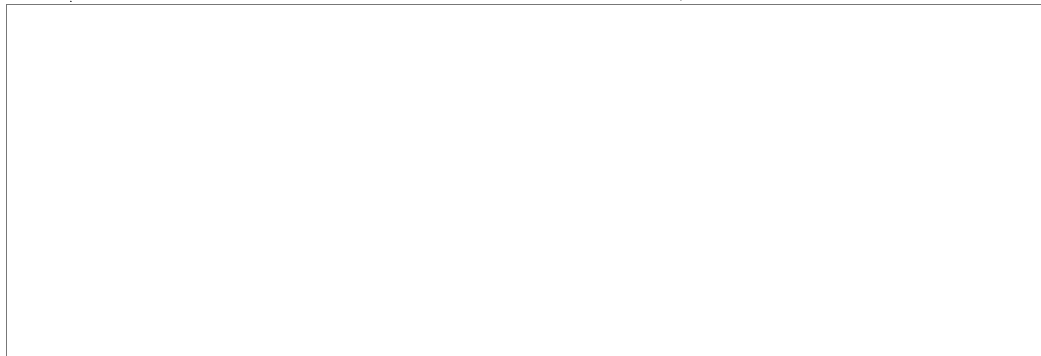
Copy  
13 Pages <sup>5</sup>

TOP SECRET

13849  
CIA/PIR-16/64  
June 1964

CENTRAL INTELLIGENCE AGENCY  
PHOTOGRAPHIC INTELLIGENCE REPORT

WU-WEI AREA, CHINA  
SEARCH FOR POSSIBLE GUIDED MISSILE  
RELATED ACTIVITY



25X1

Published and Disseminated by

NATIONAL PHOTOGRAPHIC INTERPRETATION CENTER

TOP SECRET

GROUP 1  
Excluded from automatic  
downgrading and declassification

TOP SECRET  RUFF

25X1

PHOTOGRAPHIC INTELLIGENCE REPORT

WU-WEI AREA, CHINA  
SEARCH FOR POSSIBLE GUIDED MISSILE  
RELATED ACTIVITY

CIA/PIR-16/64  
June 1964

NATIONAL PHOTOGRAPHIC INTERPRETATION CENTER

TOP SECRET  RUFF

25X1

TOP SECRET

RUFF

CIA/PIR-16/64

This report is in response to requirement C-S14-81,053 dated 4 February 1964 requesting a search of photography within a 25-nautical-mile (nm) radius of Wu-wei (37-58N 102-48E, Figure 1), in an attempt to determine whether a relation exists between the subject area (Figure 2) and the Shuang-cheng-tzu Missile Test Range (41-05N 100-15E).

The wall-enclosed city of Wu-wei is located near the trans-Sinkiang rail line in the province of Kan-su, approximately 125 nm north-northwest of Lan-chou. With its estimated population of 40,000 (January 1960), it is the local center of commerce in a predominately agrarian economy.

Good-quality, cloud-free photography provided information for the following areas of interest:

1. Wu-wei Airfield (Figures 3 and 4), approximately 7.5 nm northwest of Wu-wei. This installation has two parallel, offset north-northwest/south-southeast concrete runways connected by two concrete crossover links. The north runway measures 6,250 by 195 feet. The south runway measures 5,800 by 190 feet. A large housing and support area containing approximately 60 buildings is located west of the south runway, and a probable POL storage area is located north-northwest of the housing and support area, west of the runway crossover links. Both facilities are served by a spur from the trans-Sinkiang rail line.

2. Railroad Junction (Figures 5 and 6), approximately 10 nm southeast of Wu-wei. This site, situated on the Lan-chou rail line to Ti-hua, consists of a holding yard, a wye, a coal refueling

yard, warehousing facilities, and a fence-secured compound of unknown function.

3. Military Barracks Area (Figures 7 and 8), approximately 15 nm southeast of Wu-wei. This facility, located adjacent to the Lan-chou rail line near Ching-pien-i, contains two barracks areas with a total of approximately 55 barracks-type buildings, a possible school consisting of 17 buildings, and several groups of storage-type buildings. A rail spur and a fence-secured compound are also present.

4. Wu-wei Probable Military School (Figure 9), approximately 3.5 nm northeast of Wu-wei. This wall-enclosed facility consists of approximately 70 barracks, administration, and other institutional type buildings surrounding a central quadrangle.

5. Possible Research Facility (Figure 10), approximately 7 nm northwest of Wu-wei. A fence-secured group of 19 buildings is located near the junction of the Lan-chou rail line and its spur which serves the Wu-wei Airfield. The institutional appearance of these symmetrically arranged buildings suggests the possibility of a research function. The spur does not enter the secured area, but approaches close enough to provide transportation to and from the facility in the absence of improved roads.

The general proximity of a good airfield, possible research facility, probable military school, and military barracks area does not, in itself, suggest guided missile related activity in this area. Reported aircraft flights between Wu-wei and the Shuang-cheng-tzu Missile Test Range, however, may be the clue that would provide an explanation for the relation between the possible academic and apparent military activity.

TOP SECRET

RUFF

25X1

25X1  
25X1

25X1

TOP SECRET



RUFF

25X1

CIA/PIR-16/64



FIGURE 1. WALL-ENCLOSED CITY OF WU-WEI, CHINA.

JUN 62  
NPIC J-1047 18 641

- 2 -

TOP SECRET



RUFF

25X1

TOP SECRET [ ] RUFF

CIA/PIR-16/64

25X1

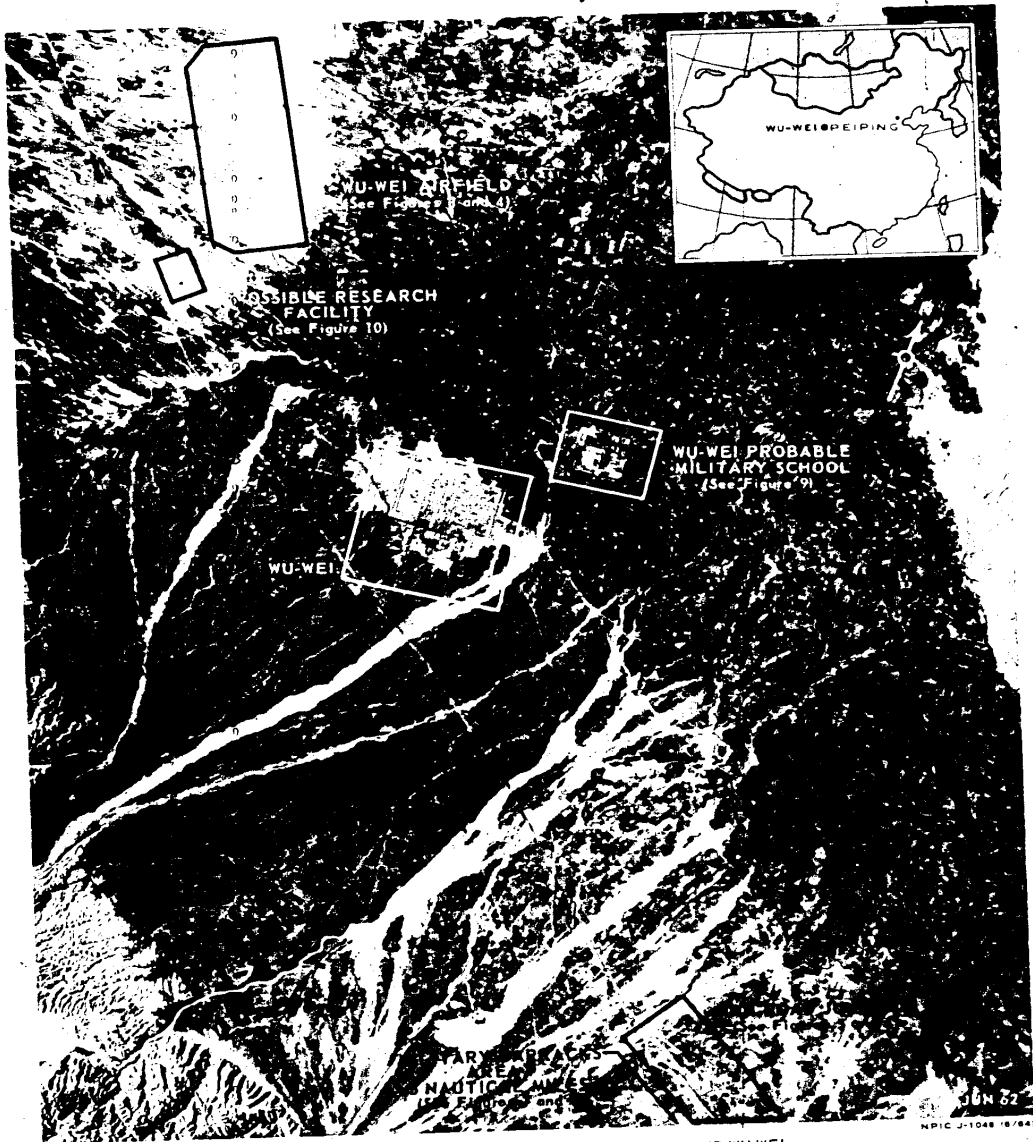


FIGURE 2. INSTALLATIONS IN SEARCH AREA AROUND WU-WEI.

- 3 -

TOP SECRET [ ] RUFF

25X1

TOP SECRET



RUFF

25X1

CIA/PIR-16/64

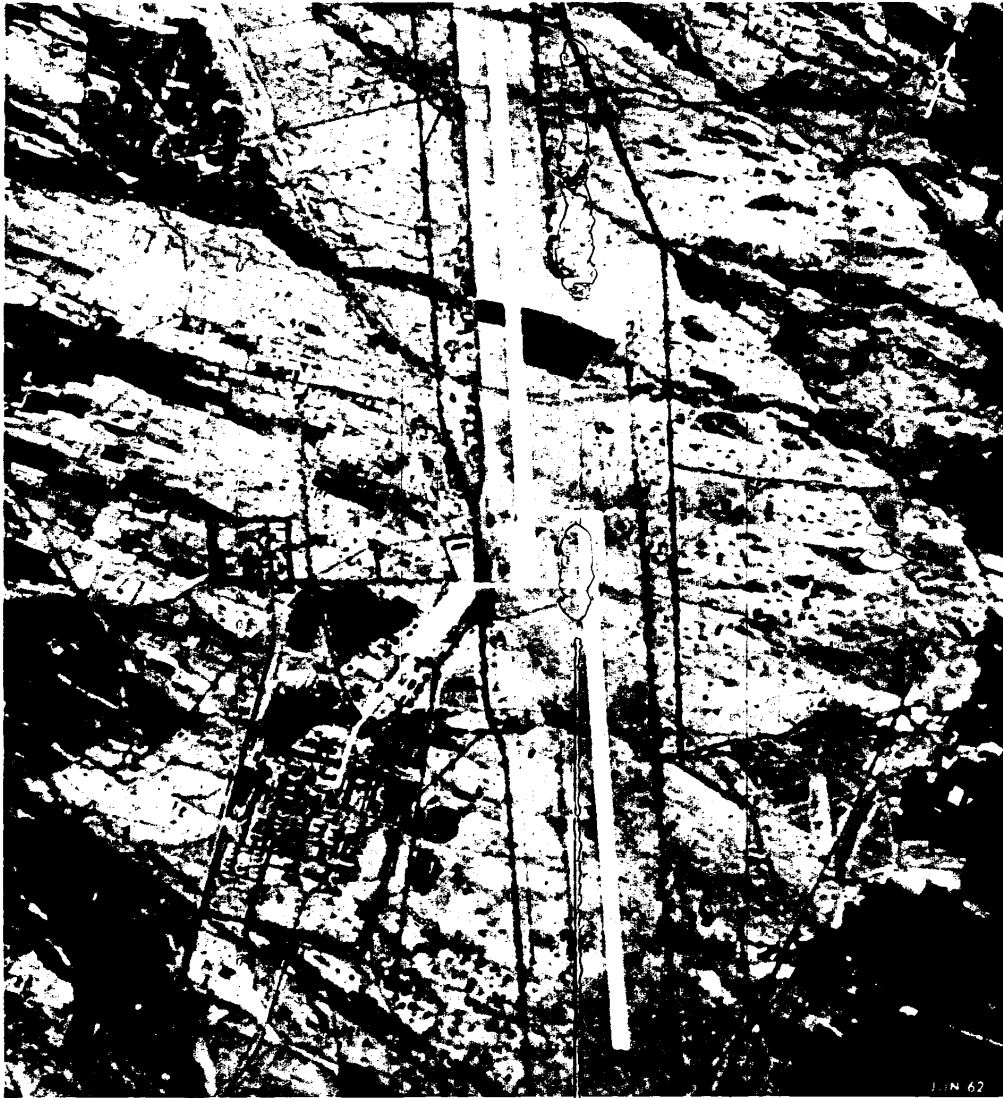
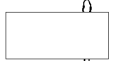


FIGURE 3. WU-WEI AIRFIELD.

- 4 -

TOP SECRET



RUFF

25X1

TOP SECRET

RUFF

CIA/PIR-16/64

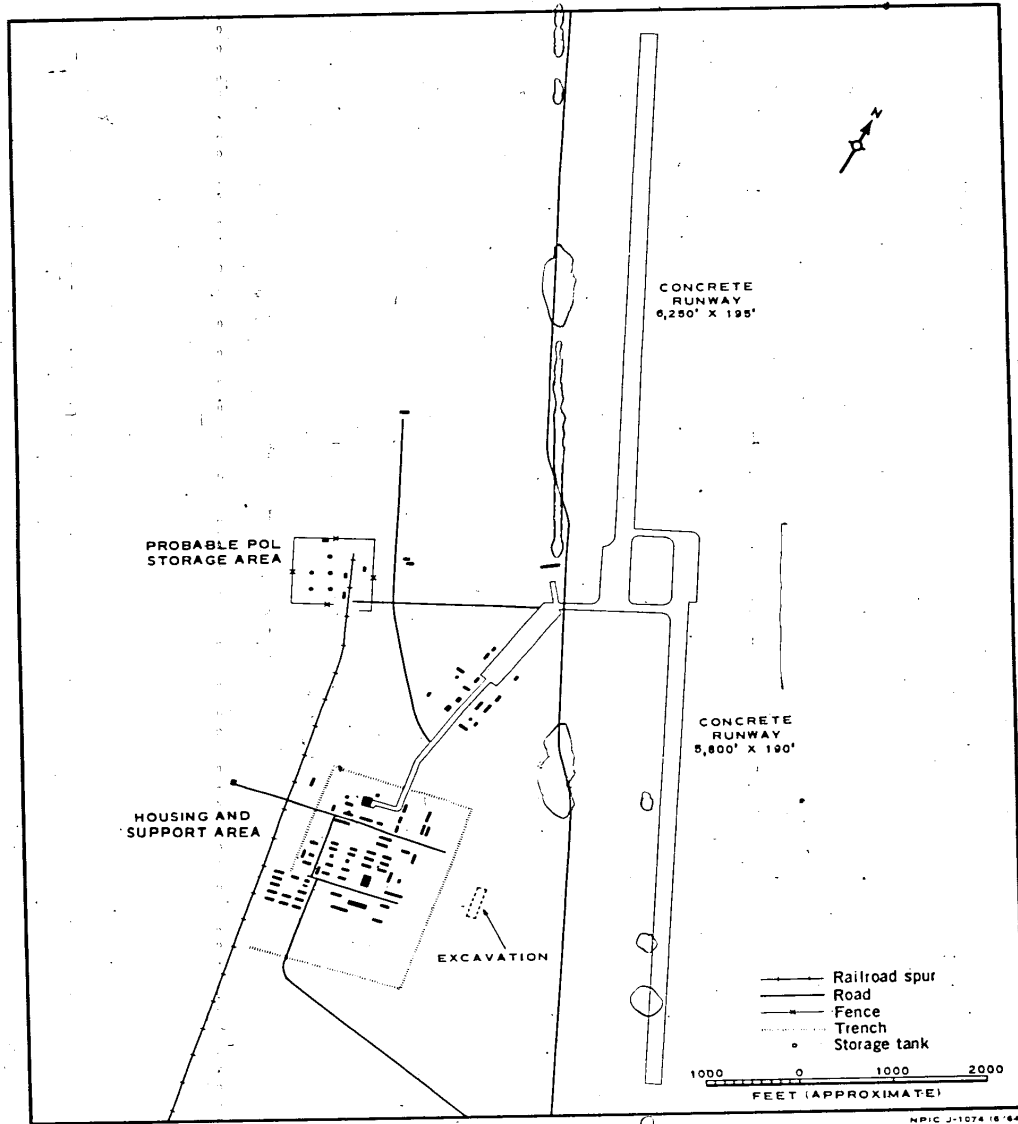


FIGURE 4. LAYOUT OF FACILITIES, WU-WEI AIRFIELD.

TOP SECRET

RUFF

25X1

25X1



TOP SECRET  RUFF

CIA/PIR-16/64



FIGURE 5. RAILROAD JUNCTION.

NPIC J-1078 16/64

- 6 -

TOP SECRET  RUFF

25X1

25X1

TOP SECRET  RUFF

25X1

CIA/PIR-16/64

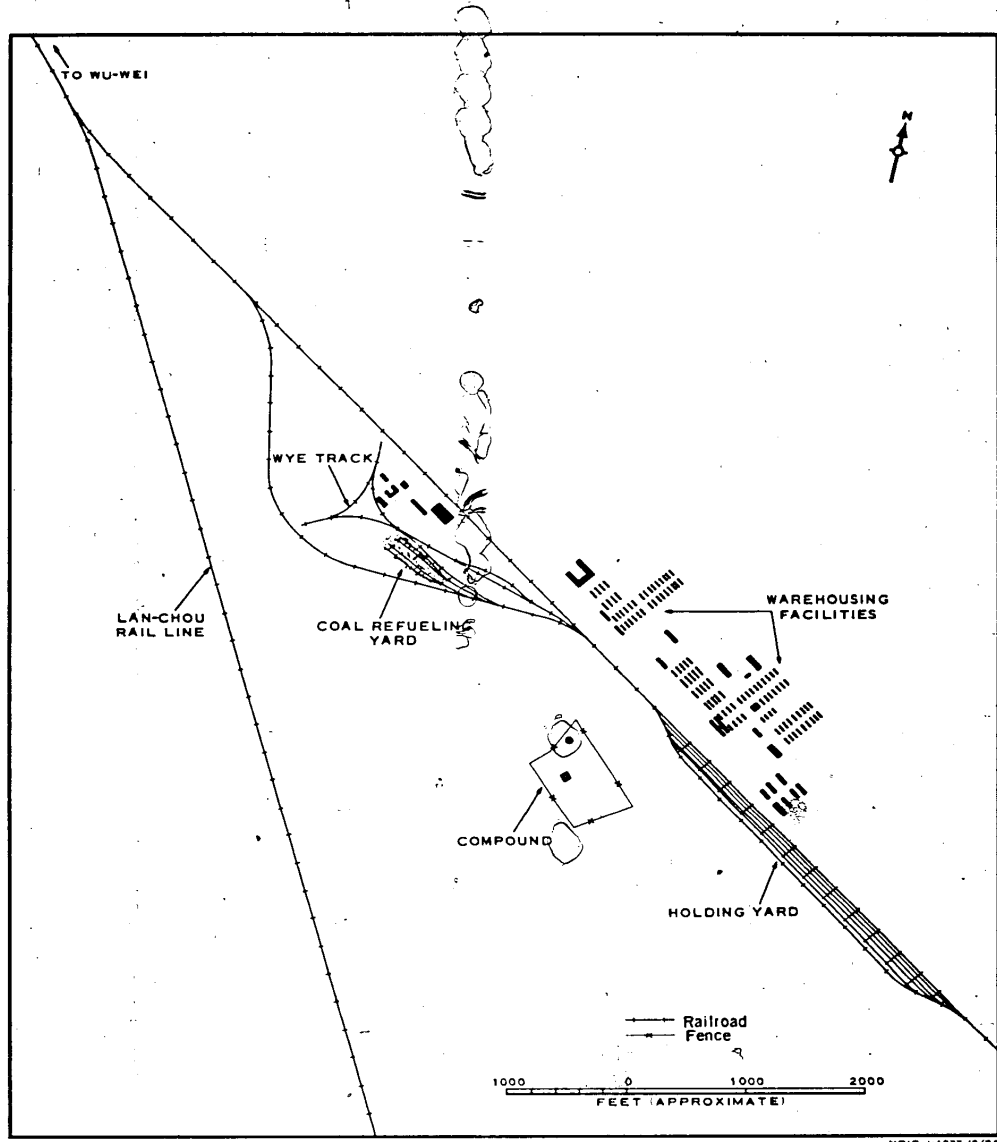


FIGURE 6. LAYOUT OF FACILITIES, RAILROAD JUNCTION.

NPIC J-1027 18/64

TOP SECRET  RUFF

25X1

TOP SECRET  RUFF

25X1

CIA/PIR-16/64

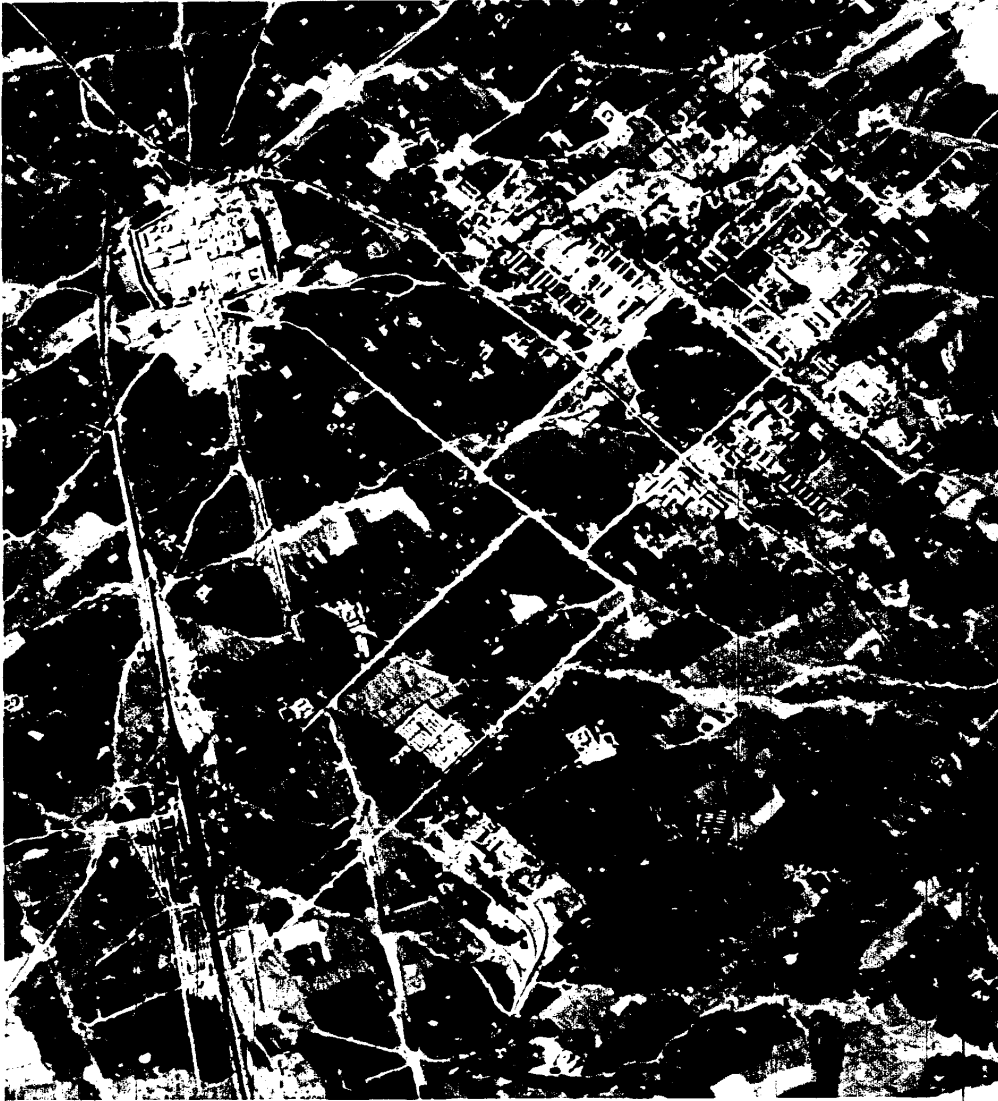


FIGURE 7. MILITARY BARRACKS AREA.

NPIC J-1074 (8/64)

- 8 -

TOP SECRET  RUFF

25X1

TOP SECRET [ ] RUFF

25X1

CIA/PIR-16/64

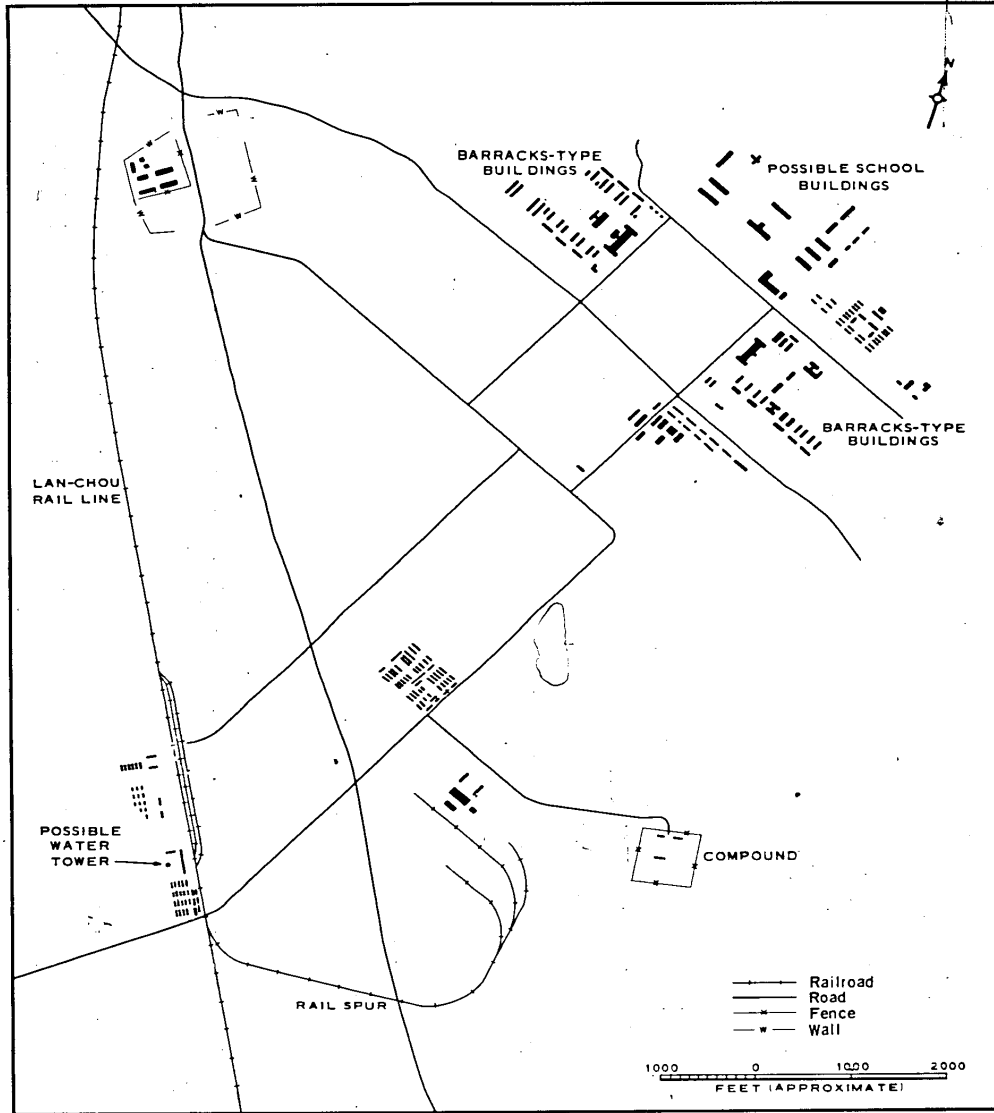


FIGURE 8. LAYOUT OF FACILITIES, MILITARY BARRACKS AREA.

NPIC J-1079 '6/64

TOP SECRET [ ] RUFF

25X1

TOP SECRET



RUFF

25X1

CIA/PIR-16/64

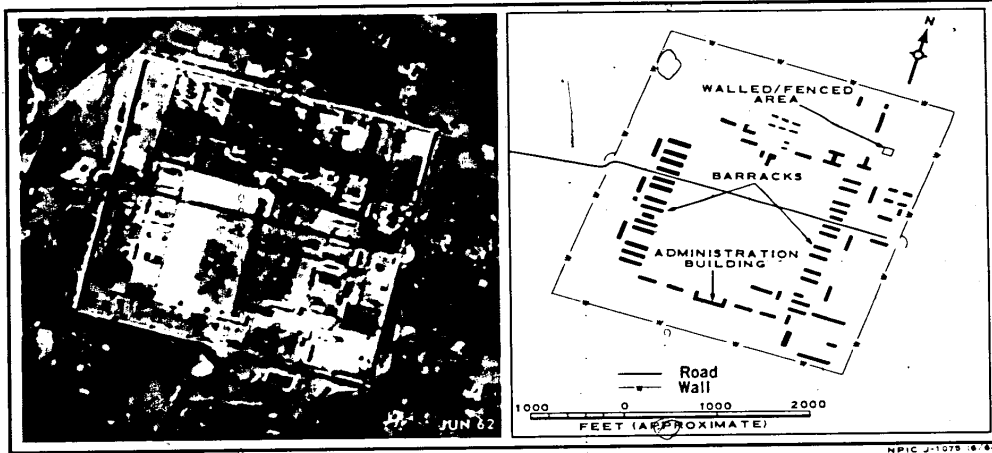


FIGURE 9. WU-WEI PROBABLE MILITARY SCHOOL.

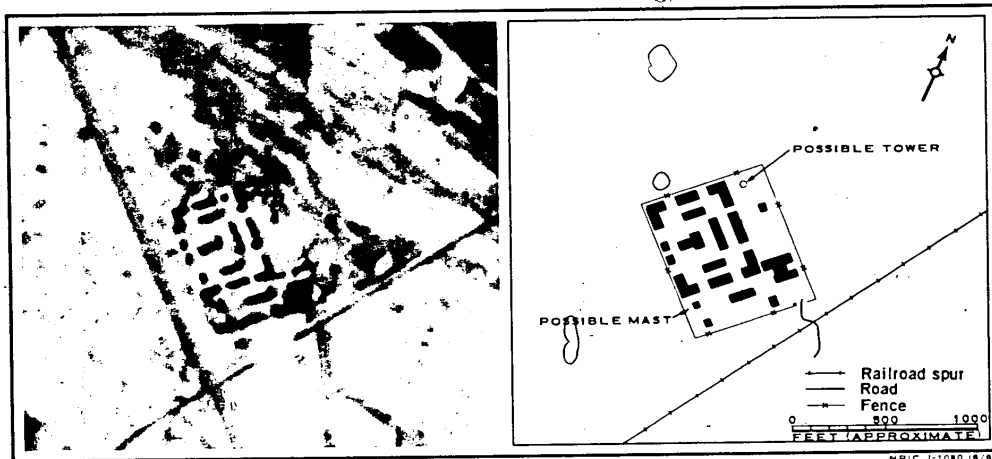


FIGURE 10. POSSIBLE RESEARCH FACILITY.

TOP SECRET



RUFF

25X1

TOP SECRET  RUFF

CIA/PIR-16/64

REFERENCES

MAPS OR CHARTS

- ACIC. USAF ONC-G-9, 1st classified ed, Jan 61, scale 1:1,000,000 (CONFIDENTIAL)
- ACIC. US Air Target Chart, Series 200, Sheet 353-11A, 1st ed, Jul 60, scale 1:200,000 (SECRET)

REQUIREMENT

C-SI4-61,053

PROJECT

C-709/64

TOP SECRET  RUFF

25X1

25X1

25X1