

Page Denied

Next 1 Page(s) In Document Denied

TOP SECRET

Copy
13 Pages

13170
NPIC/R-427/64
June 1964

PHOTOGRAPHIC INTERPRETATION REPORT

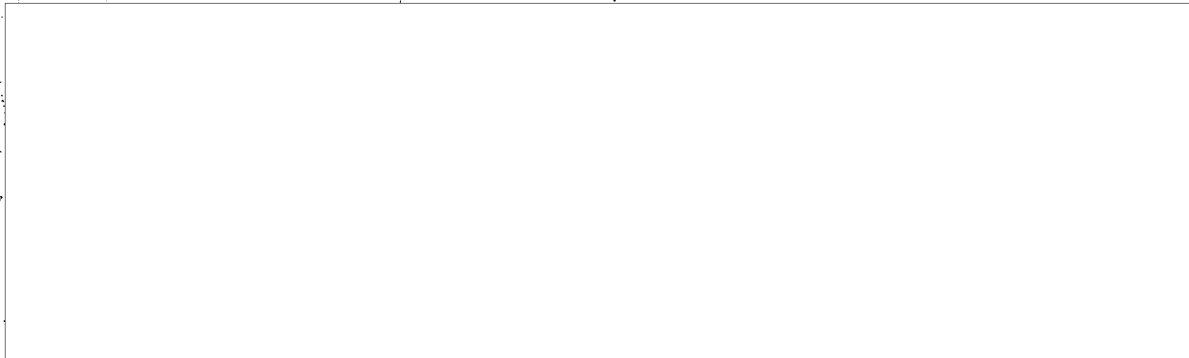
**SA-2 SAM SITES
AND SAM SUPPORT FACILITIES, USSR
IDENTIFIED ON KEYHOLE MISSION 4007**



CIA

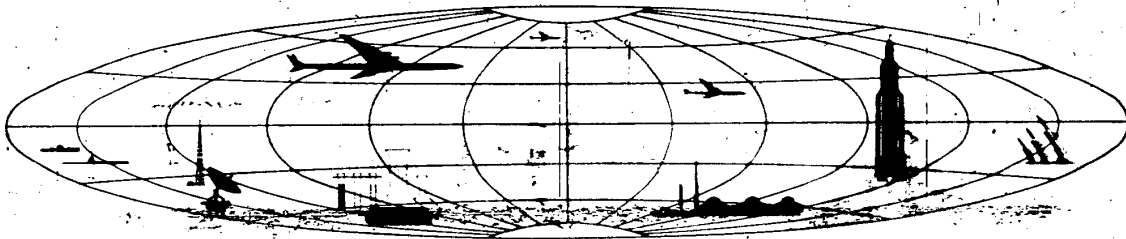


DIA



25X1

NATIONAL PHOTOGRAPHIC INTERPRETATION CENTER



TOP SECRET

GROUP 1
Excluded from automatic
downgrading and
declassification

TOP SECRET RUFF

PHOTOGRAPHIC INTERPRETATION REPORT

SA-2 SAM SITES
AND SAM SUPPORT FACILITIES, USSR
IDENTIFIED ON KEYHOLE MISSION 4007

NPIC/R-427/64

June 1964

NATIONAL PHOTOGRAPHIC INTERPRETATION CENTER

TOP SECRET RUFF

TOP SECRET RUFF

NPIC/R-427/64

This report has been prepared in response to CIA requirement C-RR4-81,384 requesting information on all SA-2 surface-to-air missile (SAM) sites and SAM support facilities newly identified on photography from KEYHOLE Mission 4007 of April 1964. As of 25 May 1964 (the cutoff date for the study on which this report is based), four SA-2 SAM sites and four SAM

support facilities had been newly identified in the USSR on this coverage (Figure 1).

Detailed information on the installations is provided in Table 1 and on the photographs following it (Figures 2-9). Dimensions of the SA-2 sites are not included because all were observed to be of normal size.

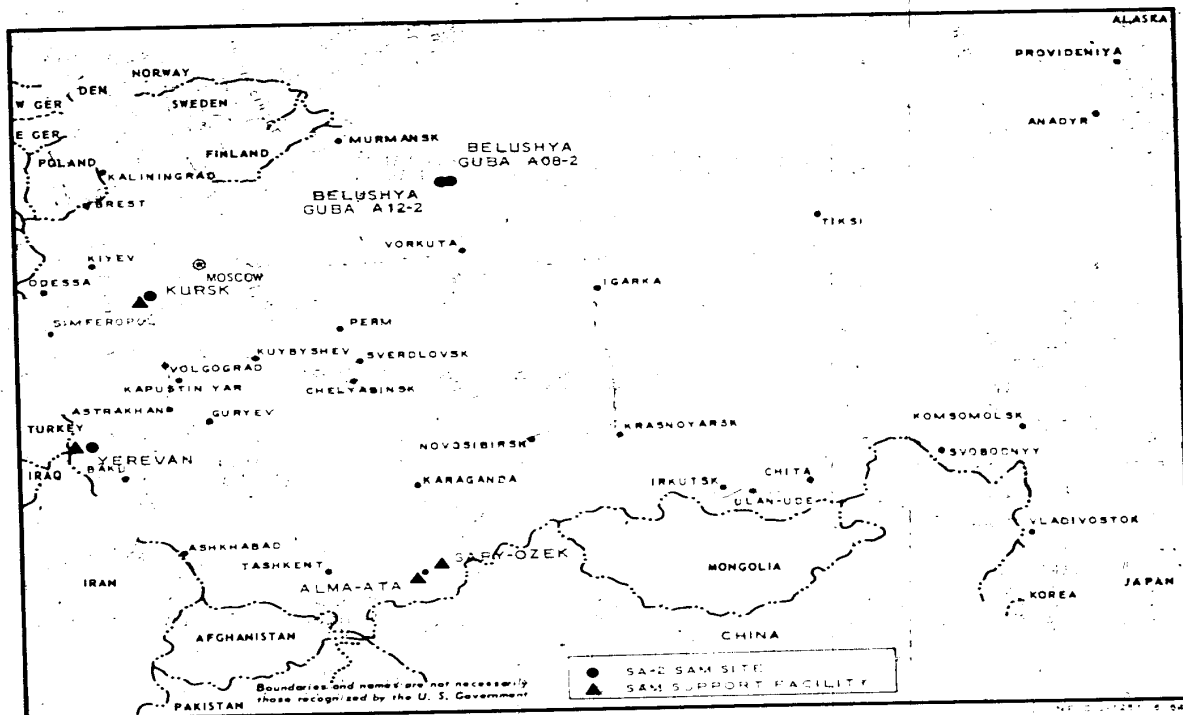


FIGURE 1. LOCATION OF SAM INSTALLATIONS IDENTIFIED ON MISSION 4007.

TOP SECRET RUFF

Page Denied

Table 1. Data on SA-2 SAM Sites and SAM Support Facilities Identified on Mission 1007

| Installation | BE No | Geographic Coordinates | Configuration/Type | Construction Status | Remarks | First Photographic Coverage | Negation Date | Map Reference (USATC Series 290; Sheet No, Edition, Date) | NPIC No | Figure No |
|------------------------|-------|------------------------|------------------------------------|---------------------|---|-----------------------------|---------------|---|---------|-----------|
| SA-2 SAM Sites | | | | | | | | | | |
| Belushya Guba A08-2 | | 1-33-40N 52-31-00E | Snow cover precludes determination | Complete | No on-site support facility observed; presence of equipment cannot be determined | | | 0050-4HL, 2d ed, Jan 64 | 2-J | 2 |
| Belushya Guba A12-2 | | 71-31-50N 52-25-15E | Snow cover precludes determination | Complete | On-site support facility contains one large and several small support buildings; presence of equipment cannot be determined | | | 0050-4HL, 2d ed, Jan 64 | 2-L | 3 |
| Kursk B05-2 | | 51-55-20N 36-28-30E | Link | Complete | On-site support facility contains 2 large storage barracks buildings and several small utilities buildings; several vans are in and near guidance area | | | 0294-2HL, 2d ed, Nov 63 | 23-1 | 4 |
| Yerovan A25-2 | | 40-08-55N 44-19-57E | Link | Complete | No on-site support facility observed, but barracks area adjacent to site could serve this purpose; 2 probable missiles and 2 possible missile transporters are present; several vans are in guidance area | | | 0323-2HL, 4th ed, Dec 63 | 69-R | 5 |
| SAM Support Facilities | | | | | | | | | | |
| Alma-Ata | | 43-22-20N 76-54-30E | Type II | Complete | No missiles, vehicles, or equipment observed | | | 0329-2HL, 2d ed, Jan 64 | 1-Q | 6 |

- 2 -

TOP SECRET RUFF

NPIC/R-427/64

Table I. (Continued)

| Installation | BE No | Geographic Coordinates | Configuration/Type | Construction Status | Remarks | First Photographic Coverage | Negation Date | Map Reference (USATC Series 200; Sheet No, Edition, Date) | NPIC No | Figure No |
|--------------|-------|------------------------|--------------------|---------------------|---|-----------------------------|---------------|---|---------|-----------|
| Kursk | | 51-45-30N 38-18-45E | Type II | Complete | 25 probable and one possible missile transporters (5 with prime movers), 3 possible low-boys with prime movers, and 6 unidentified vehicles are present; also an irregularly shaped, large drive-through building | | | 0234-2A, 1st ed, Oct 58 | 23-J | 7 |
| Sary-Ozek | | 44-37-30N 77-57-30E | Type II | Early stage | Area east of facility contains 25 missile transporters (2 canvas-covered, 21 with prime movers), an undetermined number of missile canisters, and 4 possible vans; facility is close to Sary-Ozek SAM Site B36-2 | | | 0244-22AL, 1st ed, Dec 59 | 16-A | 8 |
| Yerevan | | 40-12-55N 44-22-48E | Type I | Complete | 5 possible and 16 probable missile transporters (one with prime mover) are present; also a possible vehicle shed | | | 0325-21HL, 4th ed, Dec 63 | 68-Q | 9 |

25X1

TOP SECRET RUFF

TOP SECRET RUFF

7

NPIC/R-427/64

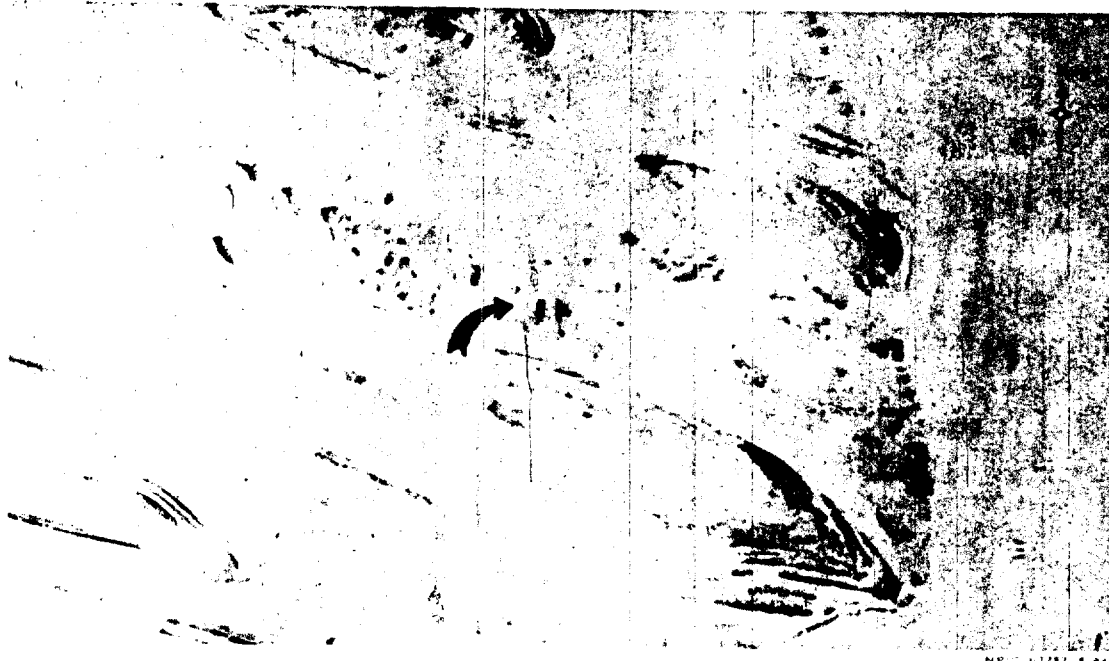


FIGURE 2. BELUSHYA GUBA SAM SITE A06-2, APRIL 1964.

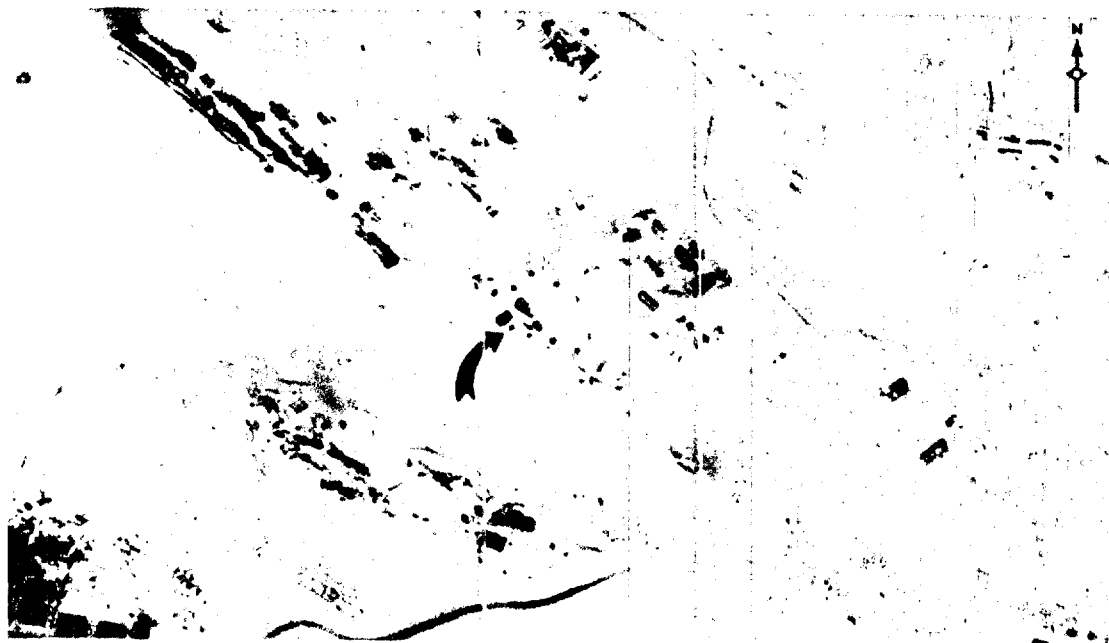


FIGURE 3. BELUSHYA GUBA SAM SITE A12-2, APRIL 1964 (SNOW COVER PRECLUDES MENSURATION OF SUPPORT BUILDINGS)

- 4 -

TOP SECRET RUFF

NOV

TOP SECRET RUFF

NPIC/R-427-64



FIGURE 4. KURSK SAM SITE B15-2, APRIL 1944.

- 5 -

TOP SECRET RUFF

25X1

TOP SECRET RUFF

NPIC/R-427/64



FIGURE 5. YEREVAN SAM SITE A25-2, APRIL 1964.

- 6 -

TOP SECRET RUFF

TOP SECRET RUFF

NPIC F-42764



FIGURE 6. ALMA-ATA SAM SUPPORT FACILITY, APRIL 1961.

TOP SECRET RUFF

TOP SECRET RUFF

NPIC/R-427/64



FIGURE 7. KURSK SAM SUPPORT FACILITY, APRIL 1964.

TOP SECRET RUFF

25X1
25X1

25X1
25X1

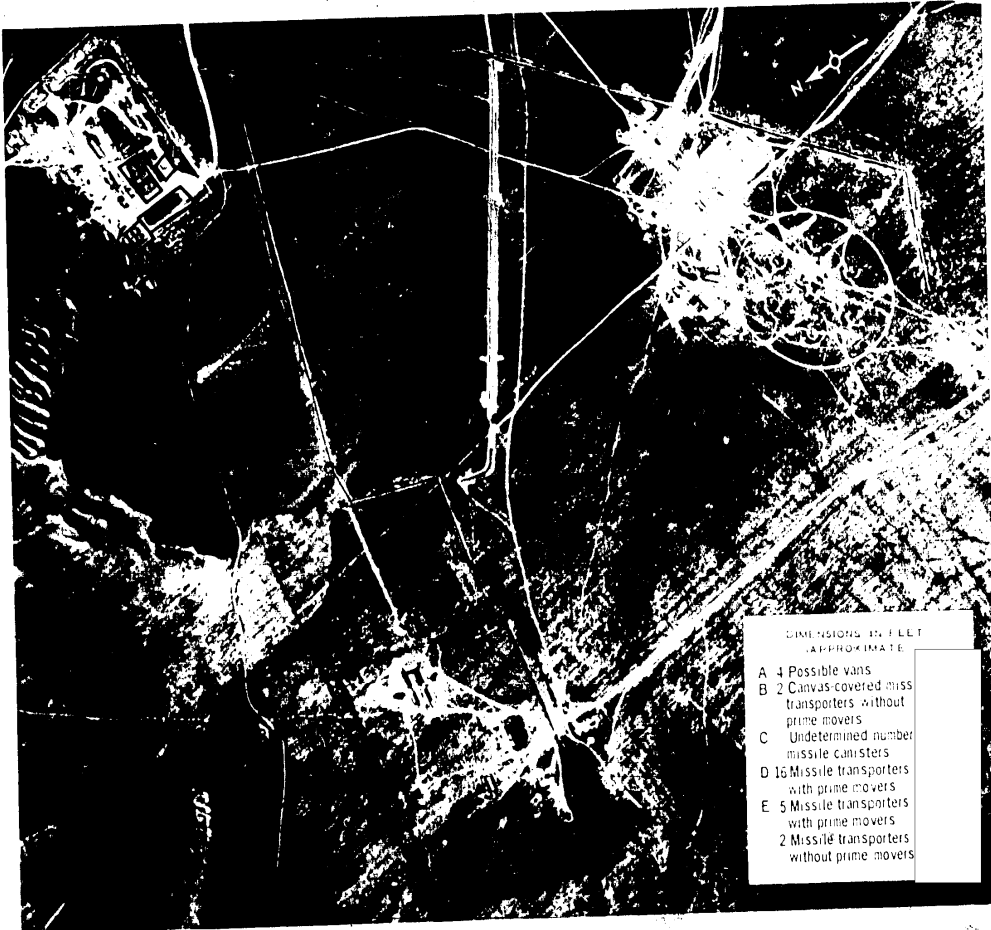


FIGURE 8. SARY OZEK SAM SUPPORT FACILITY, APRIL 1964.

TOP SECRET RUFF

TOP SECRET RUFF

NPIC/R-427/64

25X1

TOP SECRET RUFF

NPIC/R-427/64



FIGURE 9. YEREVAN SAM SUPPORT FACILITY, APRIL 1964.

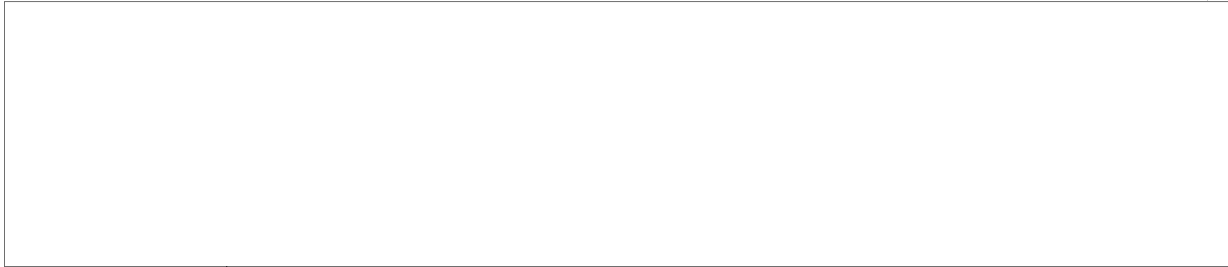
TOP SECRET RUFF

25X1

TOP SECRET RUFF

NPIC/R-427/64

REFERENCES



25X1

REQUIREMENT

CIA RR-51,351

NPIC PROJECT

N-553/64

TOP SECRET RUFF