

ILLEGIB

Approved For Release 2001/03/22 : CIA-RDP78T05439A000300340052-8

Approved For Release 2001/03/22 : CIA-RDP78T05439A000300340052-8

~~TOP SECRET~~

Copy 5
6 Pages

S 12872
NPIC/R-414/64
June 1964

PHOTOGRAPHIC INTERPRETATION REPORT

MINSK AMMUNITION DEPOT KANYUCHITSY
MINSK, USSR
BELORUSSIAN MD
Declassification Review by NIMA/DOD



CIA



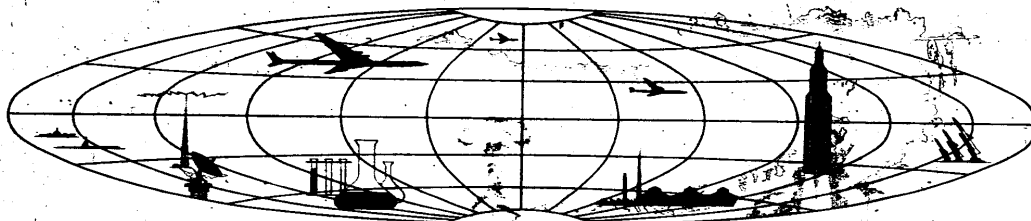
DIA

Handle Via **TALENT - KEYHOLE** Control Only

WARNING

This document contains classified information affecting the national security of the United States within the meaning of the espionage laws U. S. Code Title 18, Sections 793 and 794. The law prohibits its transmission or the revelation of its contents in any manner to an unauthorized person, as well as its use in any manner prejudicial to the safety or interest of the United States or for the benefit of any foreign government to the detriment of the United States. It is to be seen only by personnel especially indoctrinated and authorized to receive TALENT-KEYHOLE information. Its security must be maintained in accordance with KEYHOLE and TALENT regulations.

NATIONAL PHOTOGRAPHIC INTERPRETATION CENTER



~~TOP SECRET~~

GROUP 1
Excluded from automatic
downgrading and declassification

PREFACE

This report is one in a series on Soviet Ground Force and logistic installations being prepared for a DIA/CIA Panel. The series is being coordinated, published and disseminated by NPIC. The photographic analysis is being performed by the NPIC Photographic Analysis Group, the CIA Photographic Intelligence Division (NPIC), and the Production Center 1P1c (DIA). The photographic analysis for this particular report was performed by the NPIC Photographic Analysis Group.

In the interest of uniformity, the titles and letter designators for the facilities observed at these installations are identical with those appearing in the project requirement. When a specific facility is not observed both its title and letter designator are omitted in the report.

Titles and letter designators for the various facilities are as follows: (A) railroad service, (B) road service, (C) landing strips, (D) administrative and troop housing areas, (E) storage areas, (F) ammunition storage areas, (G) POL storage areas, (H) other buildings and facilities, (J) equipment storage/maintenance areas, (K) athletic fields, (L) small arms firing ranges, (M) driver training areas, (N) tank assault gun firing ranges, (P) flat trajectory firing ranges, (Q) artillery emplacements (batteries), (R) infantry or combined arms field training area or courses, (S) special training facilities, (I) unidentified facilities or tracking activity.

TOP SECRET CHESS RUFF

NPIC/R-414/64

MINSK AMMUNITION DEPOT KANYUCHITSY

(53-48N 027-30E)

MINSK, MINSKAYA OBLAST, USSR

BELORUSSIAN MD

25X1A

25X1C

AL No: None

COMOR No: None

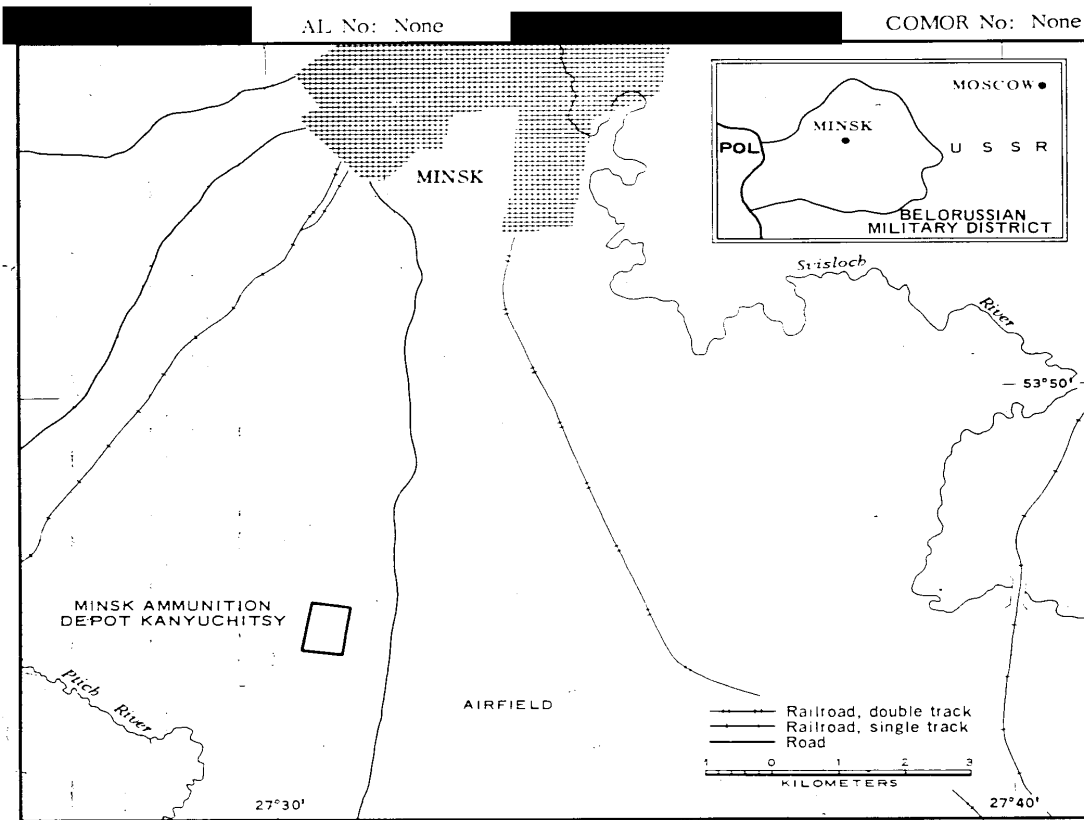


FIGURE 1. LOCATION OF MINSK AMMUNITION DEPOT KANYUCHITSY.

- 2 -

TOP SECRET CHESS RUFF

SUMMARY

Minsk Ammunition Depot Kanyuchitsy (Figure 1) is located 12 kilometers (km) southwest of Minsk (53-45N 027-33E). The installation is served by the Minsk-Slutsk highway. Minsk Army Barracks Northwest (AL-6) is located 14.4 km north, Minsk Army Barracks Uruchye (AL-1) is 21.5 km northeast, and Minsk Machulishche Airfield is 4.6 km south-southeast.

The installation (Figures 2 and 3), comprised of a double-fenced storage area and an adjacent support area, covers approximately 220 acres. The storage area contains 17 ammunition storage buildings. The support area contains one administration building, six probable barracks, and two support buildings.

Two buildings possibly associated with the ammunition storage area are located adjacent

to a scarred clearing in a wooded area 0.5 km south of the ammunition storage area.

A secured area 0.7 km southwest, with a direct road connection to the Minsk/Machulishche Airfield and surrounded by a firebreak, contains four storage buildings. The security, firebreak, and dispersion of buildings indicate possible explosives storage.

The installation is covered by TALENT photography and KEYHOLE missions between [REDACTED]. The administration building and the six probable barracks in the support area have been added subsequent to [REDACTED] coverage. Comparative analysis reveals the installation to be active during the [REDACTED] period.

25X1D

25X1D

25X1D

25X1D

DESCRIPTION OF INSTALLATION

Road Service

The installation is served by the primary Minsk-Slutsk highway.

Administrative and Troop Housing Area

Area D contains one administrative building, six probable barracks, and two support buildings. The administration building and barracks have been added since [REDACTED] coverage.

General Storage Area

Area E contains four storage buildings. The

25X1D

security, firebreak, and building dispersion indicate possible explosives storage.

Ammunition Storage Area

Area F contains 16 160- by 120-foot storage buildings and one 140- by 48-foot storage building with a 40- by 80-foot extension. The buildings are widely dispersed in a secured area.

Other Buildings

Area H contains two buildings, adjacent to a scarred area along the sides and bottom of a shallow ravine.

NPIC/R-414/64

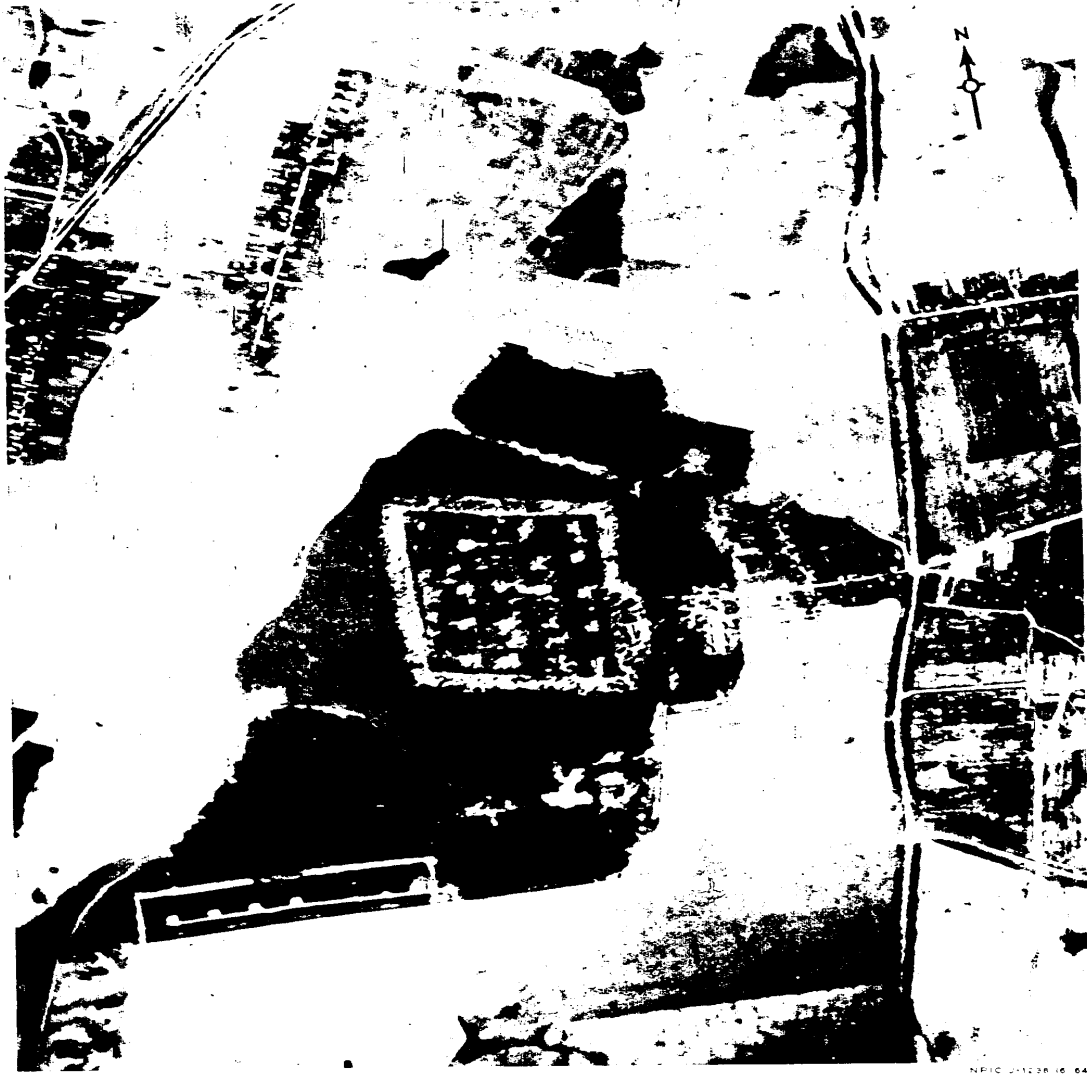


FIGURE 2. MINSK AMMUNITION DEPOT KANYUCHITSY, USSR, [REDACTED]

25X1D

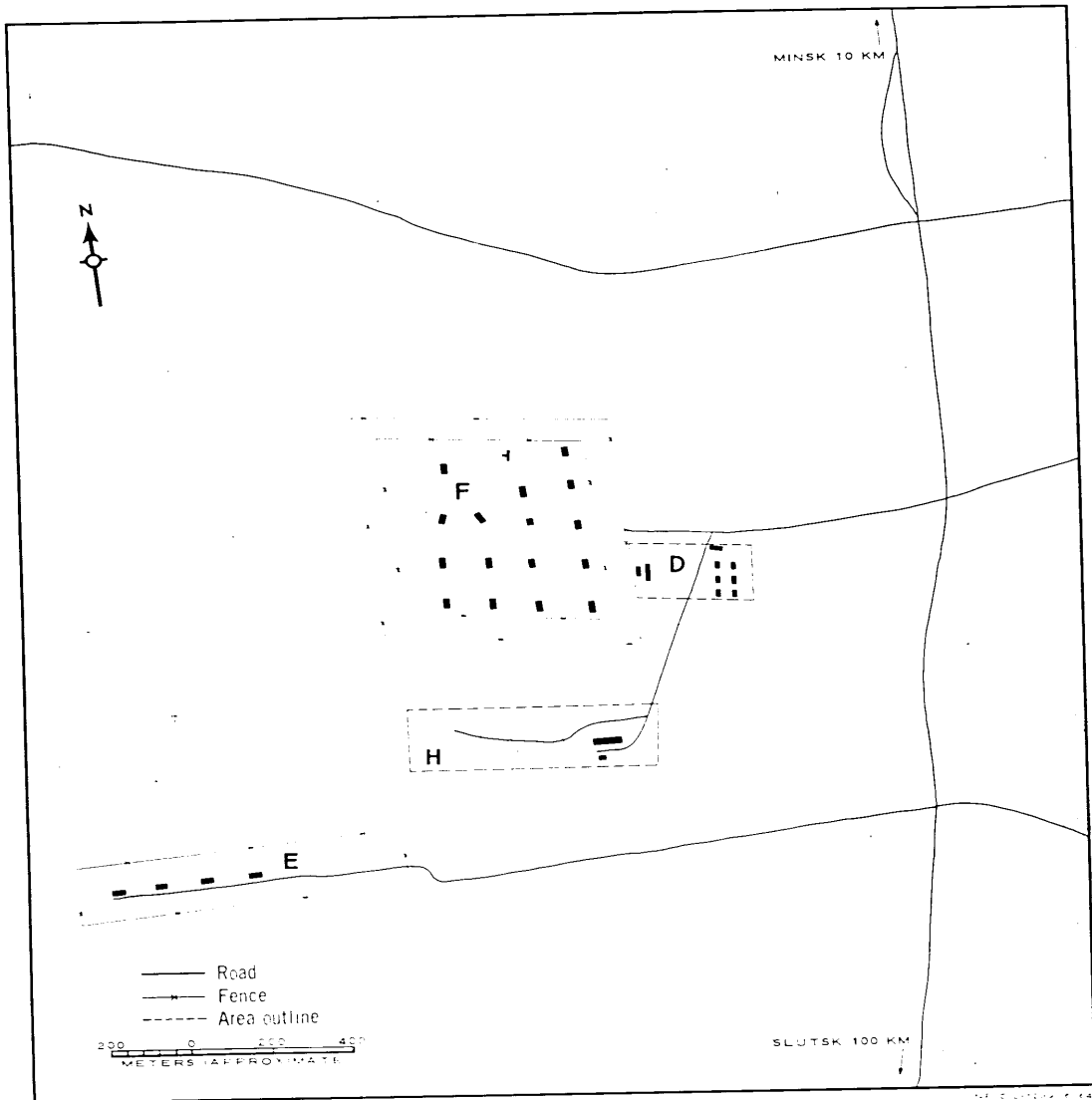


FIGURE 3. MINSK AMMUNITION DEPOT KANYUCHITSY. Sketch compiled from [REDACTED]

25X1D

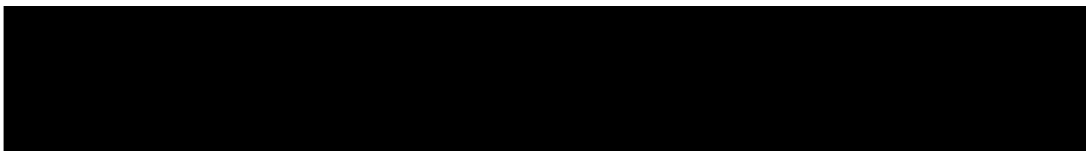
TOP SECRET CHESS RUFF

NPIC R-414/64

REFERENCES

25X1D

PHOTOGRAPHY



MAPS OR CHARTS

US Air Target Chart, Series 100, Sheet 0168-9997-100A, 2d ed, Feb 52 (CONFIDENTIAL)

US Air Target Chart, Series 200, Sheet 0168-144AL, 2d ed, Dec 52 (SECRET)

DOCUMENT

Am X-7 PIB-TK-82-001, *W. S. K. In the Dept. of Defense*, 17 Sep 63 (TOP SECRET RUFF)

REQUIREMENT

CRR1-81-111 (partial answers)

NPIC PROJECT

N-200-64

TOP SECRET CHESS RUFF