

ILLEGIB

Approved For Release 2000/08/23 : CIA-RDP78T05439A000300280012-9

Approved For Release 2000/08/23 : CIA-RDP78T05439A000300280012-9

~~TOP SECRET RUFF~~

DECLASSIFICATION REVIEW by NIMA/DOD 3/21/00

TCS No. 1653/64-KH
IB No. 170/64
1 April 1964
Copy /

MEMORANDUM FOR: Chief, Manufacturing and Services Division, ORR

25X1A ATTENTION : [REDACTED] MS/CST
THROUGH : Chief, Requirements Branch, Reconnaissance Group, CGS
FROM : Chief, CIA/PID (NPIC)
SUBJECT : Status of Rail Line Between Kuei-yang and Hsiang-tan, China
REFERENCES : (1) ORR Requirement No. C-RR4-81,027
(2) CIA/PID Project No. C 229/64

1. This memorandum is a response to the above referenced requirement requesting that a study of the status of rail lines between Kuei-yang (26 35N - 106 43E) and Hsiang-t'an (27 51N - 112 54E) be made. To be noted in this study are: recent improvements and expansion, state of construction, track gauges, alignment, and evidence of expansion at yards and stations along the rail lines. Much of the desired information is shown on the annotated map (CIA/PID/IB-P-512/64), which is attached to this memorandum.

2. A standard gauge, single-track line is operational from Kuei-yang to Hsiang-t'an. Due to the mountainous terrain between these two cities, the alignment takes a circular southern route; passing through the cities of Liu-chou (24 19N - 109 24E), Kuei-lin (25 17N - 110 17E), and Heng-yang (26 54N - 112 36E). Along this route new construction was observed 17 nautical miles east of I-shan (24 29N - 108 39E). A standard-gauge spur, consisting of approximately 20 nautical miles of line, including a tunnel, is in an advanced stage of construction.

3. The possibility of a shorter, northern route passing through the mountainous area between Kuei-yang and Hsiang-t'an should be evaluated. Two factors to be considered in determining the validity of this theory are listed below:

(1) An operational, standard-gauge line extends westward from Hsiang-t'an. Due to the lack of photographic coverage of sufficiently good quality, this line was traced only 40 nautical miles.

S-12256

~~TOP SECRET RUFF~~

EXCLUDED FROM AUTOMATIC
DOWNGRADING AND
DECLASSIFICATION

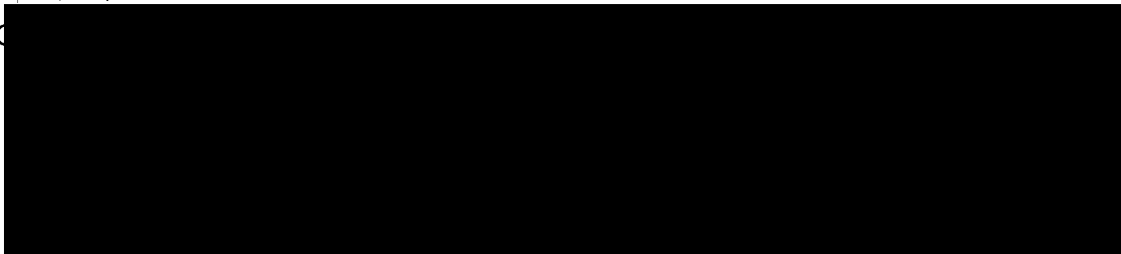
TOP SECRET RUFF

SUBJECT: Status of Rail Line Between Kuei-yang and Hsiang-tan, China

(2) Three nautical miles south of Tu-yun (26 16N - 107 30E), a branch line is under construction. The alignment trends eastward for 15 nautical miles in the general direction of Hsiang-t'an. This construction is in an early stage. Piers and abutments are completed at all bridge locations, and a minor amount of cutting and filling has been accomplished. It is very difficult to determine if this construction is active because of the lack of comparative photographic coverage. In order for this section to connect with the operational line out of Hsiang-t'an, the alignment would have to traverse more than 275 nautical miles of rugged mountainous terrain.

25X1D

25X1C



25X1A

5. The photo analysts assigned to this project were [redacted] who can be contacted on extension 2547 should questions arise concerning this memorandum. This memorandum is considered a complete answer to the referenced requirement.

25X1A

25X1A



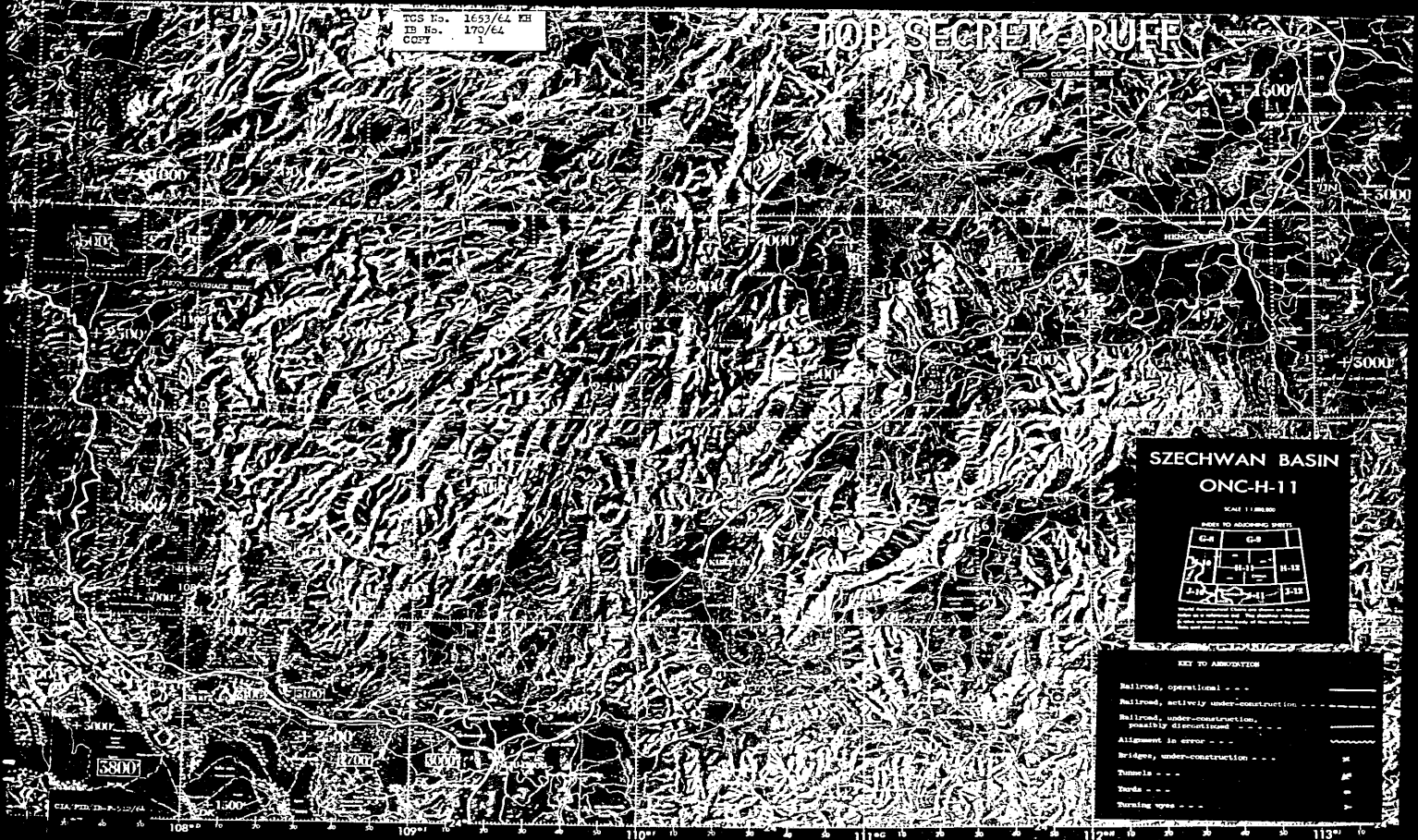
ENCLOSURES:

- 1 Annotated Map (2 Copies)
(CIA/PID/IB-P-512/64)

TOP SECRET RUFF

TCS No. 1657/G4 FH
ID No. 170/64
COPY 1

TOP SECRET ARUFF



SZECHWAN BASIN
ONC-H-11



- KEY TO ABBREVIATION
- Railroad, operational - - - - -
 - Railroad, actively under construction - - - - -
 - Railroad, under construction, possibly discontinued - - - - -
 - Alignment in error - - - - -
 - Bridges, under construction - - - - -
 - Tunnels - - - - -
 - Tracks - - - - -
 - Turning loops - - - - -

VH

TCS No. 1693/64 KH
IB No. 170/64
CONF 1

TOP SECRET



TOP SECRET

CIA/PDB/IB-P-912/GA

106°

107°

108°

109°

110°

111°