

ILLEGIB

Approved For Release 2001/06/09 : CIA-RDP78T05439A000300270097-7

Approved For Release 2001/06/09 : CIA-RDP78T05439A000300270097-7

~~SECRET~~
NO FOREIGN DISSEM

Yu-lin Port Facilities China

Declassification review by NIMA/DOD

~~SECRET~~
NO FOREIGN DISSEM

SECRET NOFORN DISSEM

IB - 163/64
31 March 1964
Copy 1

MEMORANDUM FOR: Chief, Manufacturing and Services Division, ORR

25X1A

ATTENTION : [REDACTED]

THROUGH : Chief, Requirements Branch, Reconnaissance Group, CGS

FROM : Chief, CIA/PID (NPIC)

SUBJECT : Yu-lin Port Facilities, China

REFERENCES : (1) ORR Requirement No. C-RR4-81,025
(2) CIA/PID Project No. C 276/64

1. This memorandum is in response to the above referenced requirement requesting a detailed photo analysis, using comparative photographic coverage, of the Yu-lin Port Facilities, China.

25X1D

2. Yu-lin is located on the southern end of Hainan Island at 18° 15'N - 109° 33'E. The port facilities have undergone very little expansion during the interval between Photo Mission [REDACTED]

25X1D

[REDACTED] One warehouse, approximately 150 by 30 feet, and one pier, extending approximately 80 feet into the harbor, have been constructed during this time period. The only other expansion noted was two areas of activity which are in such early stages of construction, that no identification can be made.

25X1D

The port facilities, as observed on Photo Mission [REDACTED] consisted of three POL storage tanks, two piers, four wharfs, five marine railways, and numerous warehouses, barracks, and open storage areas. The vessels noted in the harbor at that time consisted of two "swatow" class PF vessels, one coastal freighter, three motor launches, three unidentified naval vessels, and numerous

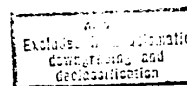
25X1D

junks and barges. The important vessels that were observed in the harbor on Photo Mission [REDACTED] consisted of two motor launches, one "swatow" class PF vessel, and one unidentified naval vessel. The vessel and port facility measurements are given on the annotation key to the graphics (see Enclosures CIA/PID/IB-P-515/64 and P-516/64). All measurements are approximate.

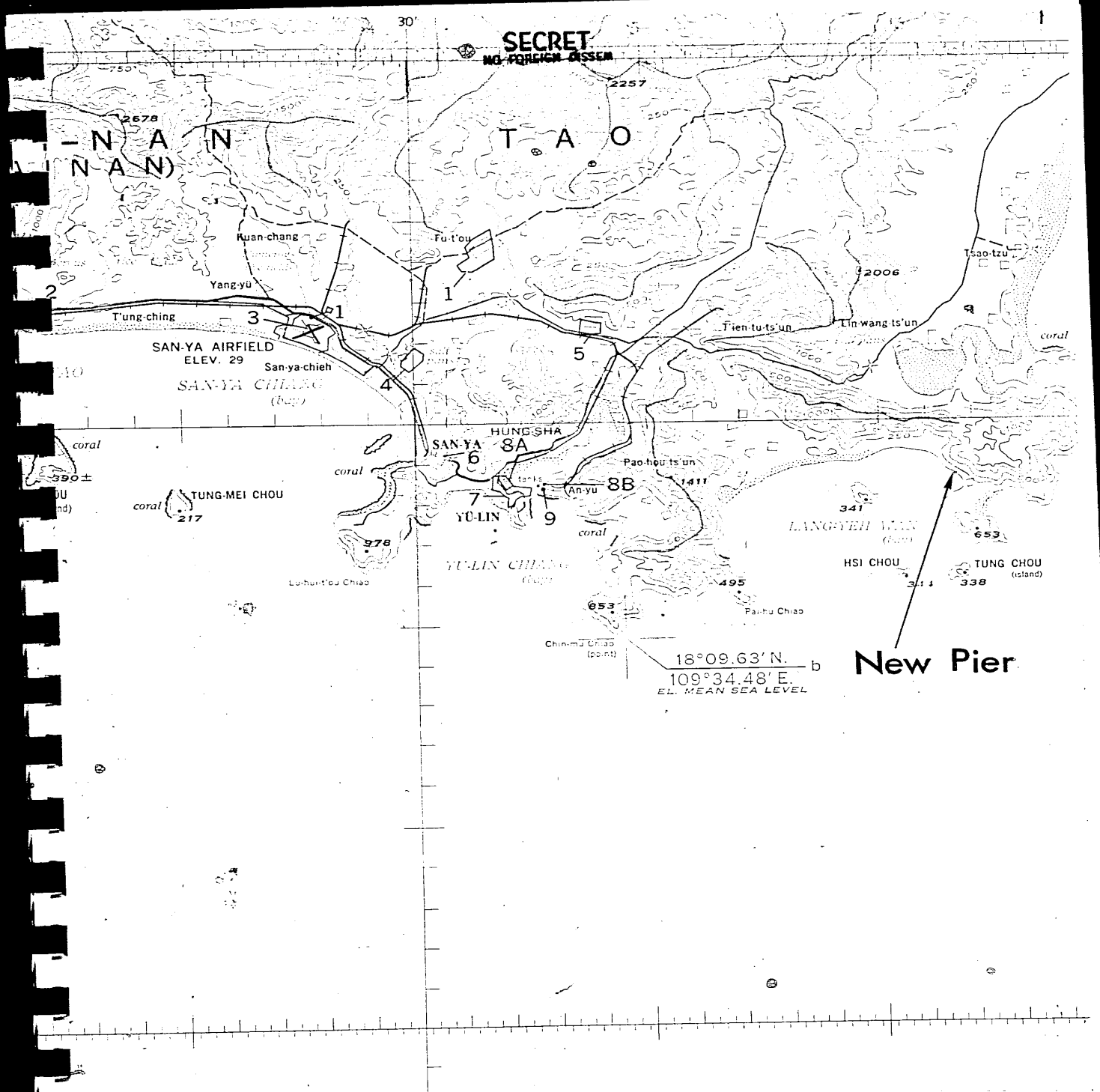
3. Due west of Yu-lin in the Lang-yeh Bay at 18° 13'N - 109° 41'E, a new "T" head pier is under construction. This pier extends approximately 640 feet into the bay and will have approximately 455 feet of berthing space across the head of the "T" when completed. This area will possibly be a new naval base, as the buildings in the area are the type used to store naval supplies. Three of these buildings are still under construction. Refer to Enclosure CIA/PID/IB-P-517/64 for a further analysis.

S-12240

SECRET NOFORN DISSEM



SECRET
NO FOREIGN DISSEM



18°09.63' N.
109°34.48' E.
E.L. MEAN SEA LEVEL

New Pier

SECRET
NO FOREIGN DISSEM

CIA/FID/IB-
P-514/64

SECRET NOFORN DISSEM

SUBJECT: Yu-lin Port Facilities, China

4. The photo analysts assigned to this requirement were [REDACTED] 25X1A
[REDACTED] who can be contacted on extension 2547
should any further information concerning this memorandum be desired. This 25X1A
requirement is considered complete.

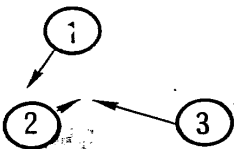
[REDACTED] 25X1A

ENCLOSURES:

- 1 Annotated Map
(CIA/PID/IB-P-514/64)
- 3 Annotated Photo Enlargements
(CIA/PID/IB-P-515/64 thru P-517/64)

SECRET NOFORN DISSEM

SECRET
NO FOREIGN DISSEM



KEY TO ANNOTATIONS

25X1D

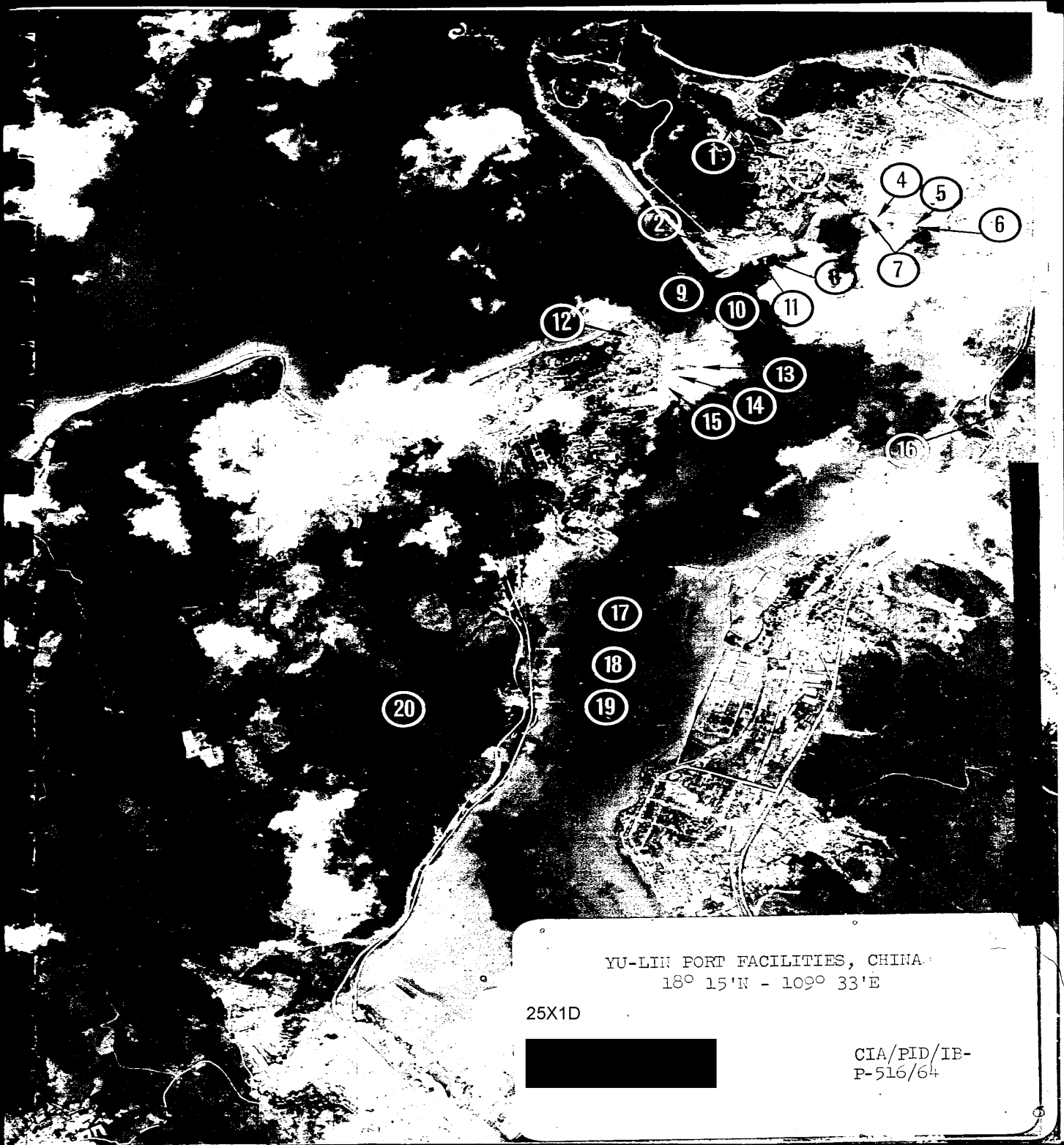
1. Unidentified Naval Vessel (155 Feet Long)
2. Two Motor Launches (Ea. 105 Feet Long)
3. "Swatow" Class PF Vessel [REDACTED]

YU-LIN PORT FACILITIES, CHINA
18° 15' N - 109° 33' E

25X1D

[REDACTED]
CIA/PLD/IB-
P-515704

SECRET
NO FOREIGN DISSEM



YU-LIN PORT FACILITIES, CHINA
18° 15'N - 109° 33'E

25X1D



CIA/PID/IB-
P-516/64

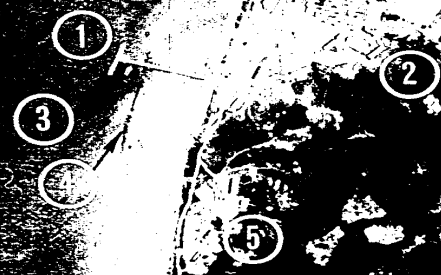
KEY TO ANNOTATIONS

- | | |
|---|-------|
| 1. Barracks | 25X1D |
| 2. New Warehouse | |
| 3. Two Marine Railways (Ea. 340 Feet Long) | |
| 4. Three Unidentified Naval Vessels (One 155 Feet Long,
Other Two 195 Feet Long) | |
| 5. Three Motor Launches (Ea. 105 Feet Long) | 25X1D |
| 6. "Swatow" Class PF Vessel | |
| 7. Wharf (600 Feet Long) | 25X1D |
| 8. "Swatow" Class PF Vessel | |
| 9. Storage Building | |
| 10. Three Marine Railways (140 Feet Long) | |
| 11. Wharf (430 Linear Feet) | |
| 12. Three POL Storage Tanks | |
| 13. Pier (Extends 150 Feet From Shoreline) | 25X1D |
| 14. Coastal Freighter
(150 Feet Long) | |
| 15. Rail Served Wharf (980 Linear Feet) | |
| 16. Unidentified Activity | |
| 17. Wharf (85 Linear Feet) | |
| 18. New Pier (95 Feet Long) | |
| 19. Unidentified Activity | |
| 20. Mining Activity | |

SECRET
NO FORN DISSEM

KEY TO ANNOTATIONS

- 1. "T" Head Pier
- 2. Storage Buildings
- 3. Barge
- 4. Possible Off-shore Wharf Under Construction
- 5. Storage Buildings



LANG-YEH BAY PORT FACILITIES, CHINA
18° 13'N - 109° 41'E

25X1D



CIA/PID/IB-
P-517/64