

**ILLEGIB**

**Approved For Release 2000/06/14 : CIA-RDP78T05439A000100340015-1**

**Approved For Release 2000/06/14 : CIA-RDP78T05439A000100340015-1**

~~SECRET~~

(DOWNGRADING PROHIBITED)

CIA/PIB-1008/61

AIRCRAFT PLANT "CHKALOV" 84  
TASHKENT, USSR

The Tashkent Aircraft Plant "Chkalov" 84 is engaged in producing transport-type aircraft. This factory was initially constructed in Moscow in 1934 and moved to Tashkent in 1941 where it was installed in two main locations which are designated Airframe Plant A and Assembly Plant B in the Bombing Encyclopedia. Plant A (41-19N 69-16E), located in the north-central part of the city, probably manufactures component parts and minor assemblies, which are transported to Plant B (41-18N 69-19E), 2.8 miles distant, in the southeast part of the city.

Associated with Assembly Plant B is an airfield approximately 3,500 by 5,500 feet in overall dimensions, with a 4,700- by 230-foot concrete runway. Located on this field and in the plant area are 18 aircraft, consisting of seven completed CRATE, four CRATE either incomplete or under repair, five CAB, one HOUND, and one glider. One probable assembly building is under construction at this plant.

Each plant is surrounded by a security fence or wall, which in the case of Plant B also surrounds the airfield. The scale and resolution of the photography preclude recognition of any airframe components, handling equipment, or missiles or missile mock-ups which might be present in either of the plant areas or on the airfield.

## KEY TO ANNOTATIONS

Figure 1 -- Airframe Plant A "Chkalov" 84

1. Administration and engineering offices, 750 x 50.\*
2. Sheet metal and lathe shop, 750 x 150.
3. Scrap recovery building, 210 x 65.
4. New unidentified building, 70 x 55.
5. Utensils production shop, 215 x 55.
6. Warehouse, 215 x 55.
7. Heat treatment building, 250 x 95.
8. Cleaning and anodizing building, 250 x 145.
9. Water pump house, 125 x 80.

- 1 -

~~SECRET~~

(DOWNGRADING PROHIBITED)

25X1C

SECRET

(DOWNGRADING PROHIBITED)

CIA/PIB-1008/61

10. Laboratory, 150 x 30.
11. Drop hammer shop, 270 x 110.
12. Welding and fabrication building, 400 x 140.
13. Probable fabrication building, 410 x 145. New since 1949.
14. Water tank.
15. Parts finishing building, 220 x 125.
16. Small unidentified building, 70 x 60.
17. Warehouse and paint shop, 330 x 85.
18. Small unidentified building, 75 x 40.
19. Probable fabrication building, 235 x 80. New since 1949.
20. Steam plant, 90 x 70.
21. Foundry, 315 x 130.
22. Warehouse, 100 x 55.
23. Three small unidentified buildings.

\* All dimensions are given in feet.

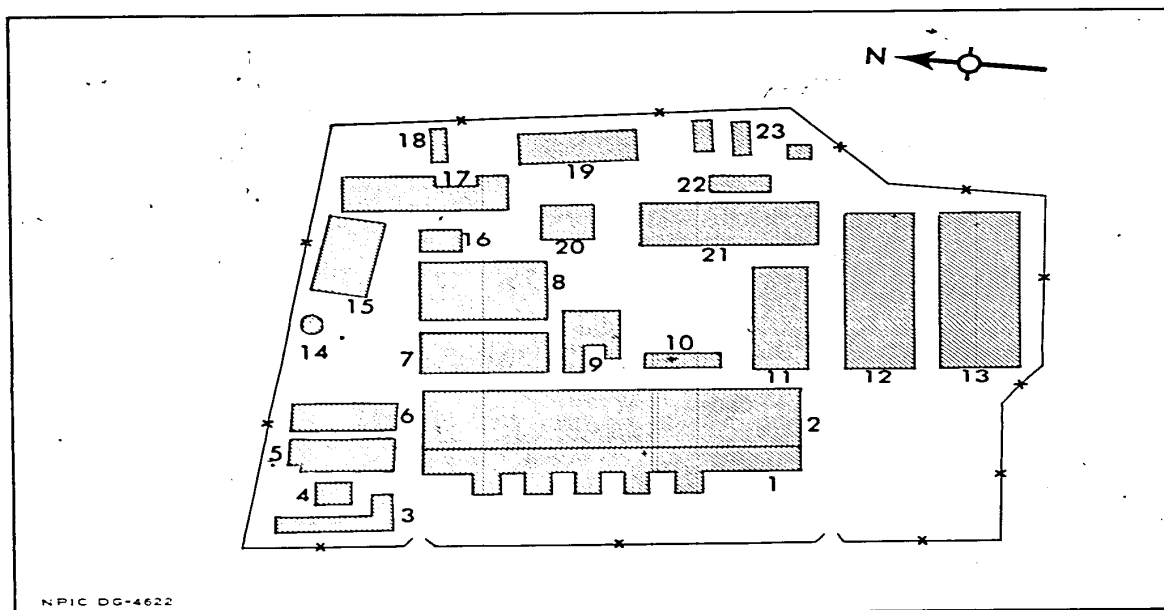


FIGURE 1. AIRFRAME PLANT A "CHKALOV" 84, TASHKENT, USSR.

- 2 -

25X1C

SECRET

25X1C

SECRET

(DOWNGRADING PROHIBITED)

CIA/PIB-1008/61

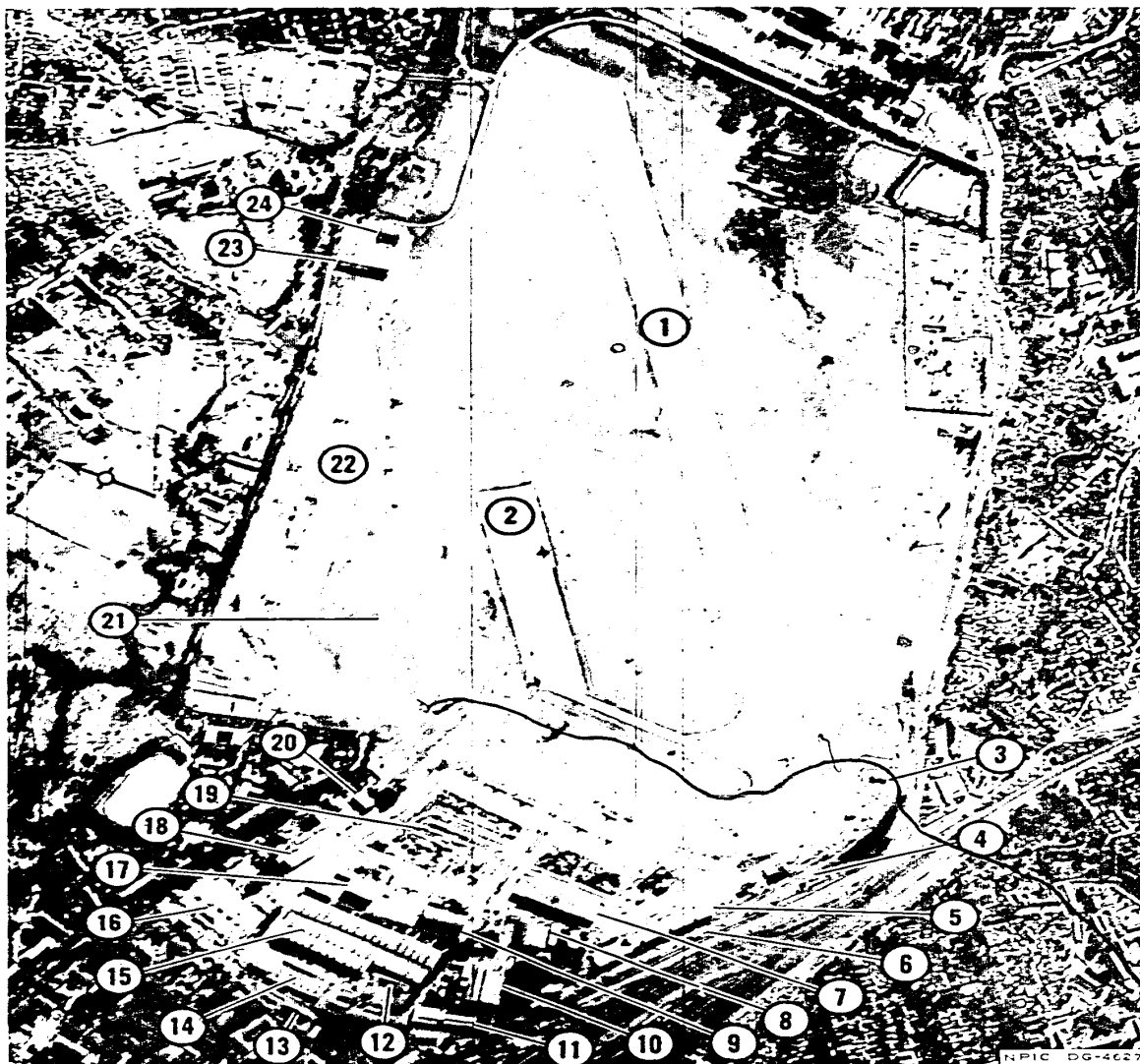


FIGURE 2. AIRCRAFT ASSEMBLY PLANT B "CHKALOV" 84, TASHKENT, USSR.

- 3 -

25X1C

SECRET

(DOWNGRADING PROHIBITED)

25X1C

**SECRET**

(DOWNGRADING PROHIBITED)

CIA/PIB-1008/61

KEY TO ANNOTATIONS

Figure 2 -- Aircraft Assembly Plant B "Chkalov" 84

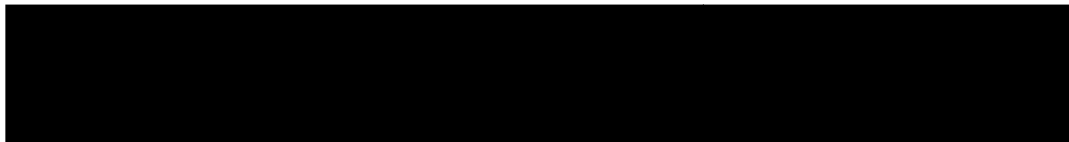
1. Runway, concrete, 4,700 x 230.\*
2. Parking apron, concrete, 1,340 x 270.
3. POL storage area.
4. RR spur lines servicing plant.
5. Probable warehouses, 645 x 90.
6. RR platforms and sheds.
7. Probable assembly building, 450 x 180. New since 1949.
8. Aircraft parts warehouse, 180 x 160.
9. Possible paint shop, 225 x 160.
10. Fuselage assembly building, 235 x 180.
11. Possible engine warehouse, 360 x 75.
12. Unidentified building, 140 x 55 and 150 x 50.
13. Steam plant, 180 x 25.
14. Fuel tank assembly building, 415 x 180.
15. Main assembly building, 800 x 240 and section 520 x 85.
16. Underground POL storage area, 420 x 260.
17. Possible paint shop, 180 x 160.
18. Probable repair and parts warehouse, 150 x 85.
19. Probable assembly building under construction, 415 x 200.
20. Probable repair shop, 105 x 65.
21. Two compass roses.
22. Aircraft parking strip, 1,650 x 240, rolled earth.
23. Probable aircraft storage shed, 245 x 65.
24. Hangar-type building, 130 x 100.

\* All dimensions are given in feet.

REFERENCES

PHOTOGRAPHY

25X1D



25X1C

MAPS

SAC. US Air Target Chart, Series 25, Sheet 0328-9999-0-25A, 1st ed, Feb 53, scale 1:25,000 (S)

- 4 -

25X1C

**SECRET**