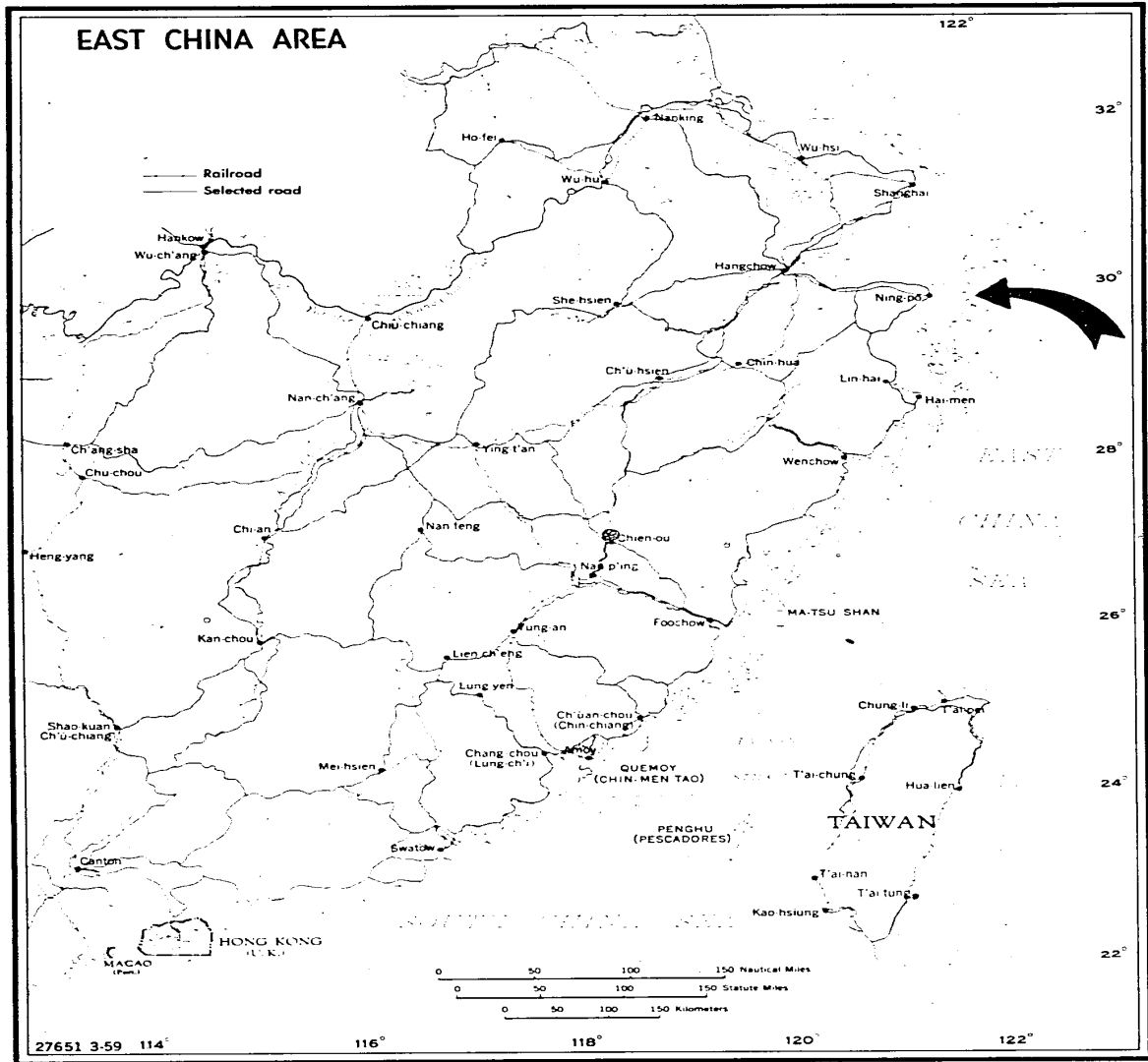


ILLEGIB

Approved For Release 2001/09/03 : CIA-RDP78T05439A000100250033-8

Approved For Release 2001/09/03 : CIA-RDP78T05439A000100250033-8

TOP SECRET CHESS



TOP SECRET CHESS

TOP SECRET CHESS

PIC/JR-15/59

HOU-SO-CHENG SHIPYARD

CHEKIANG PROVINCE, CHINA

Hou-so-cheng Shipyard is located off Tower Hill Channel (Pai-Ya-Yang) opposite Wai-hsu Island, approximately 96 miles south-southeast of Shanghai and ten miles south-southwest of Ting-hai Naval Base. This new shipyard is engaged in the construction and repair of PT boats (possible PGM) and river patrol craft. Eighteen craft can be laid down simultaneously on the eighteen building ways. At the time of photography, there were seven PT boats, P-6 class (80-85 feet long), five small patrol craft (40-50 feet long) and two unidentified craft (80-85 feet long) on the ways, ten PT boats P-6 class (80-85 feet long) tied-up alongside the offshore wharf, and eighteen river patrol craft, each 60 feet long, on cradles on quayed areas.

The yard is served by an all-weather road from Ning-po (27 miles west). A new railroad, under construction from Ning-po, will terminate at a new rail yard at Chai-chiao-chen (29°52'N/121°55'E) approximately 6 miles west of the shipyard. A new road has been constructed from this railyard to the Ning-po/Hou-so-cheng all-weather road.

The major components of the shipyard are identified on the accompanying line drawing by area of activity and described in the following key to annotations.

TOP SECRET CHESS

KEY TO ANNOTATIONS

A-1 (Storage Area)

1. Off-shore wharf (with three 70' approaches), 120' x 20'.
2. Two probable POL tanks (semi-buried, with pipeline leading toward water front area), each approximately 30' in diameter.
3. Storage building, 70' x 20'.
4. Storage building, 45' x 20'.
5. Eight river patrol boats, (probably in cradles), each 60' long, on a quayed area.
6. Storage building, 50' x 20'.
7. T-head pier, 70' approach and 40' face.
8. Storage building, 25' x 20'.

A-2 (Storage Area)

9. Storage buildings, two 70' x 20', and one 20' x 15'.
10. Storage building, 30' x 20'.
11. L-shaped storage building, 70' x 20', and 50' x 20'.
12. Storage building, 30' x 15'.
13. Storage building, 80' x 35', wing 20' x 15'.
14. Storage building, 140' x 35'.
15. Pier under construction, approximately 150' long.
16. Storage building, 35' x 30'.
17. Storage building, irregular shape, over-all 225' x 35', total roof area 6,100 sq. ft.
18. Storage building, 60' x 20'.
19. Storage building, 115' x 20'.
20. Storage building, 90' x 20'.
21. Storage building, 60' x 30'.

A-3 (Storage Area)

22. Storage building, 100' x 20'.
23. Storage building, 100' x 35'.
24. Possible storage building, 65' x 20'.
25. Possible storage building, 20' square.
26. Storage building, 100' x 20'.
27. Storage building, 35' x 15'.
28. Storage building, 80' x 30'.
29. L-shaped storage building, 60' x 30' and 30' square.
30. Storage building, 45' x 30'.
31. L-shaped storage building, 80' x 30' and 30' square.
32. Storage building, 45' x 20'.

B-1 (Workshops and Shipbuilding Area)

33. Probable forge 95' x 30', attached shop 95' x 40'.
34. Off-shore wharf, three sections (each 90' x 20'), with six approaches. Ten PT boats (P-6 class, 80'-85' long) tied alongside.
35. Probable diesel power plant, 60' x 20'.
36. Workshop, 115' x 40'.
37. Boilerhouse, 40' x 20', adjacent shop 25' x 20'.

B-2 (Workshops and Shipbuilding Area)

38. Ten river patrol boats, (probably in cradles), each 60' long, on a quayed area.
39. Probable engine shop, irregular shape, over-all 175' x 45'. Total roof cover 7,500 sq. ft.
40. Storage building, 60' x 20'.
41. Storage building, 30' x 20'.
42. Workshop, 160' x 35'.
43. Workshop, 70' x 35', wing 65' x 45'.
44. Storage building, 45' x 20'.
45. Storage building, 30' x 15'.
46. Storage building, 40' x 30'.
47. Storage building, 50' x 20'.
48. Storage building, 35' x 20'.
49. Eighteen building ways, each 110' long, served by a traverse launching device 300' long and 50' wide.
Fourteen vessels on ways: seven PT boats (P-6 class, 80-85 ft.), five small patrol craft (40-50 ft.) and two unidentified craft 80-85 ft.
50. Winch house, for operating traverse, 30' square.
51. Storage building, 60' x 15'.
52. Storage building, 60' x 45'.
53. Workshop, 100' x 45', wing 40' square.
54. T-head pier, 115' approach and 100' face.
55. Storage building, 45' x 30'.
56. Probable workshop under construction, irregular shape, over-all 175' x 75'.
57. Storage building, 45' x 30'.
58. Workshop, 90' x 45', wing 45' x 30'.
59. Probable saw mill, 120' x 15'.
60. Probable woodworking shop, L-shaped, 45' x 20' and 30' x 15'.

C (Administration Area)




61. Administration building, main part 100' x 45', two wings, each 65' x 45'.
62. Office building, 175' x 45'.
63. Office building, irregular shape, over-all 95' x 45', total roof area 4,275 sq. ft.

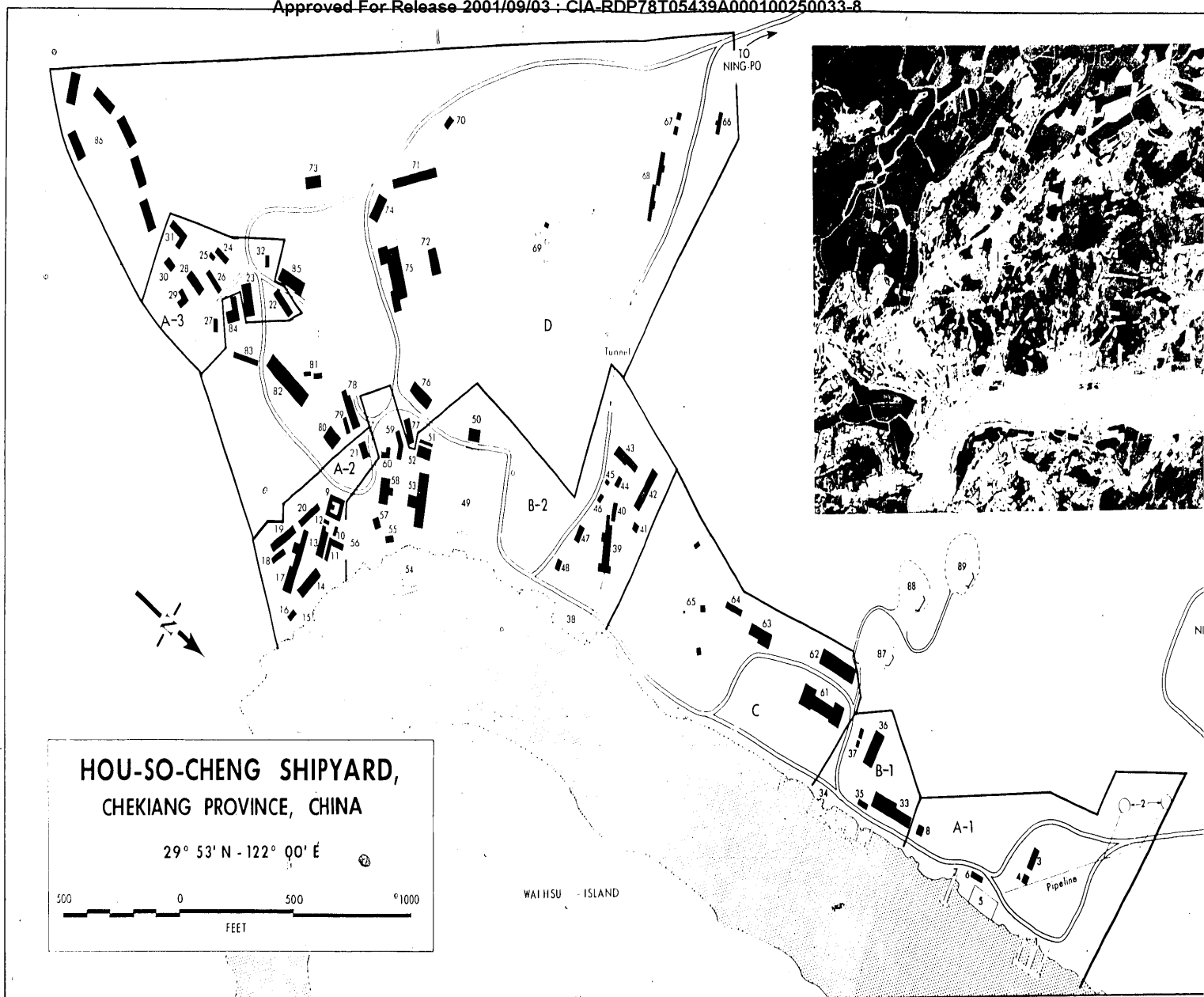
TOP SECRET CHESS

PIC/JR-15/59

- 64. Storage building, 70' x 20'.
- 65. Possible communications and radar, three buildings, one 45' x 20' and two 30' x 15'.

D (Barracks and Housing Area)

- 66. Possible barracks building, 95' x 15'.
- 67. Two possible storage buildings, 30' x 20' and 25' x 20'.
- 68. Two possible barracks buildings, each 125' x 20', with wing 20' x 10'.
- 69. Three probable water tanks, two 20' diameter, one 10' diameter.
- 70. Storage building, 45' x 30'.
- 71. Storage building, 200' x 30'.
- 72. Storage building, 90' x 20'.
- 73. Probable barracks building, 70' x 35'.
- 74. Storage building, 90' x 30'.
- 75. Administration building, main section 150' x 60', two wings 70' x 30'.
- 76. Probable barracks building, 100' x 35'.
- 77. Storage building, 95' x 30'.
- 78. Probable barracks building, 110' x 30', wing 20' square.
- 79. Storage building, 70' x 15'.
- 80. Possible mess hall, 65' x 50'.
- 81. Two storage buildings, 65' x 30' and 40' x 20'.
- 82. Barracks building, 200' x 50'.
- 83. Barracks building, 145' x 20'.
- 84. Probable barracks building, 70' x 45', wing 60' x 20'.
- 85. Possible auditorium, 115' x 70'.
- 86. Six 3-story apartment buildings, each 100' x 40'.
- 87. 
- 88.  25X1D
- 89. 



**HOU-SO-CHENG SHIPYARD,
CHEKIANG PROVINCE, CHINA**

29° 53' N - 122° 00' E

500 0 500 1000
FEET

TOP SECRET CHESS

7

PIC/JR-15/59

25X1D



PHOTO DATA:

<u>Mission</u>	<u>Prints</u>	<u>Date</u>	<u>Approx. Scale</u>

25X1D

25X1D

MAP DATA:

AMS, Series L782, Sheet 9444 IV, Scale, 1:50,000

COORDINATES: 29°53'N/122°00'E

TOP SECRET CHESS