

TOP SECRET



IMAGERY
ANALYSIS
DIVISION

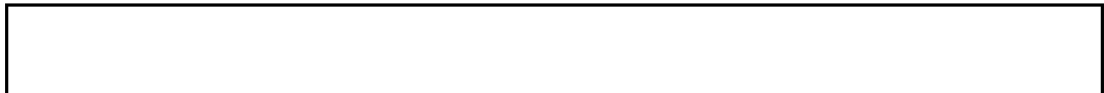
PIR

PHOTOGRAPHIC INTELLIGENCE REPORT



NOSENKO SHIPYARD 444

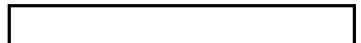
NIKOLAYEV, USSR



25X1

Declass Review by NIMA/DOD

CIA/PIR 77077



25X1

DATE September 1966

COPY 39

PAGES 3

GROUP 1
Excluded from automatic
downgrading and declassification

TOP SECRET

25X1

Approved For Release 2003/05/14 : CIA-RDP78T05161A001400010056-3

Approved For Release 2003/05/14 : CIA-RDP78T05161A001400010056-3

X1

Approved For Release 2008/05/14

TOP SECRET RDP78T05161A001400010056-3

25X1

CIA IMAGERY ANALYSIS DIVISION

CIA/PIR-77077

NOSENKO SHIPYARD 444

NIKOLAYEV, USSR

[Redacted]

X1

25X1

Approved For Release 2008/05/14 TOP SECRET RDP78T05161A001400010056-3

[Redacted]

CIA IMAGERY ANALYSIS DIVISION

CIA/PIR-77077

SHIPYARD : NOSENKO SHIPYARD 444
LOCATION : NIKOLAYEV, USSR
GEO COORDS: 46-57N 031-59E

KEY TO ANNOTATIONS

1. New class naval ship under construction.
The two rectangular openings on the main deck are still evident although the one on the port side is about one-half closed. This ship appears to be at the same stage of construction as reported in [redacted] See annotation 1, [redacted]
2. Possible POLTAVA/PEREKOP Class Merchant Ship under construction on building way. See annotation 2, [redacted]
3. Unidentified ship under construction on building way.
See annotation 3, [redacted]
4. Stern section of a probable merchant vessel.
This section is on the same building way as the possible POLTAVA/PEREKOP at annotation 2 above. See annotation 4, [redacted]
5. LAMA Class AEM in fitting-out slip.
The distinctive well deck forward and the stepped-down superstructure toward the stern identify this as a LAMA Class AEM. See annotation 5, [redacted]
6. New class naval ship at fitting-out quay.
The openings in the deck observed on the sister ship at annotation 1 above are visible on this ship. These openings appear to be covered by small shacks. A "clover leaf" pattern of holes on the forward armament platform is now visible on this ship. (See annotation 1, [redacted] [redacted] Imagery resembling a possible twin SAM missile launcher is positioned on the after armament platform just forward of the bridge. Although this possible missile launcher could not be measured it appears to be larger than that found on the KASHIN Class DLG.
7. UGRA Class AS alongside the fitting-out quay.
The hull outline, stack, and superstructure placement confirm this identification. See annotation 7, [redacted]



TOP SECRET



25

CIA/PIR-77077

CIA IMAGERY ANALYSIS DIVISION

- 8. POLTAVA/PEREKOP Class Merchant Ship at fitting-out quay.
The number of hatches and their configuration aides in this identification.
See annotation 8,
- 9. Probable DNEPR Class AR.
The superstructure and stack placement along with the bow lift extension
contributed to this evaluation. See annotation 9,
- 10. Two MAYAKOVSKIY Class Fish Factory Ships at fitting-out quay.
See annotation 10,
- 11. MAYAKOVSKIY Class Fish Factory Ship at fitting-out quay.
A ship of this type was about to be launched on the previous coverage
of this yard at annotation 12, The floating
dock used to launch the fish factories built in the large construction
hall has been positioned near the foot of and in line with the building
way containing the second unit of the new class naval ship (annotation
1 above).

25

25

NOTE: No measurements were included in this report because of the obliquity of the photography.



2

TOP SECRET

TOP SECRET

2068705/14 CIA-RDP78-06161A001400010056-3
NIKOLAYEV, USSR
46-57N 031-59E

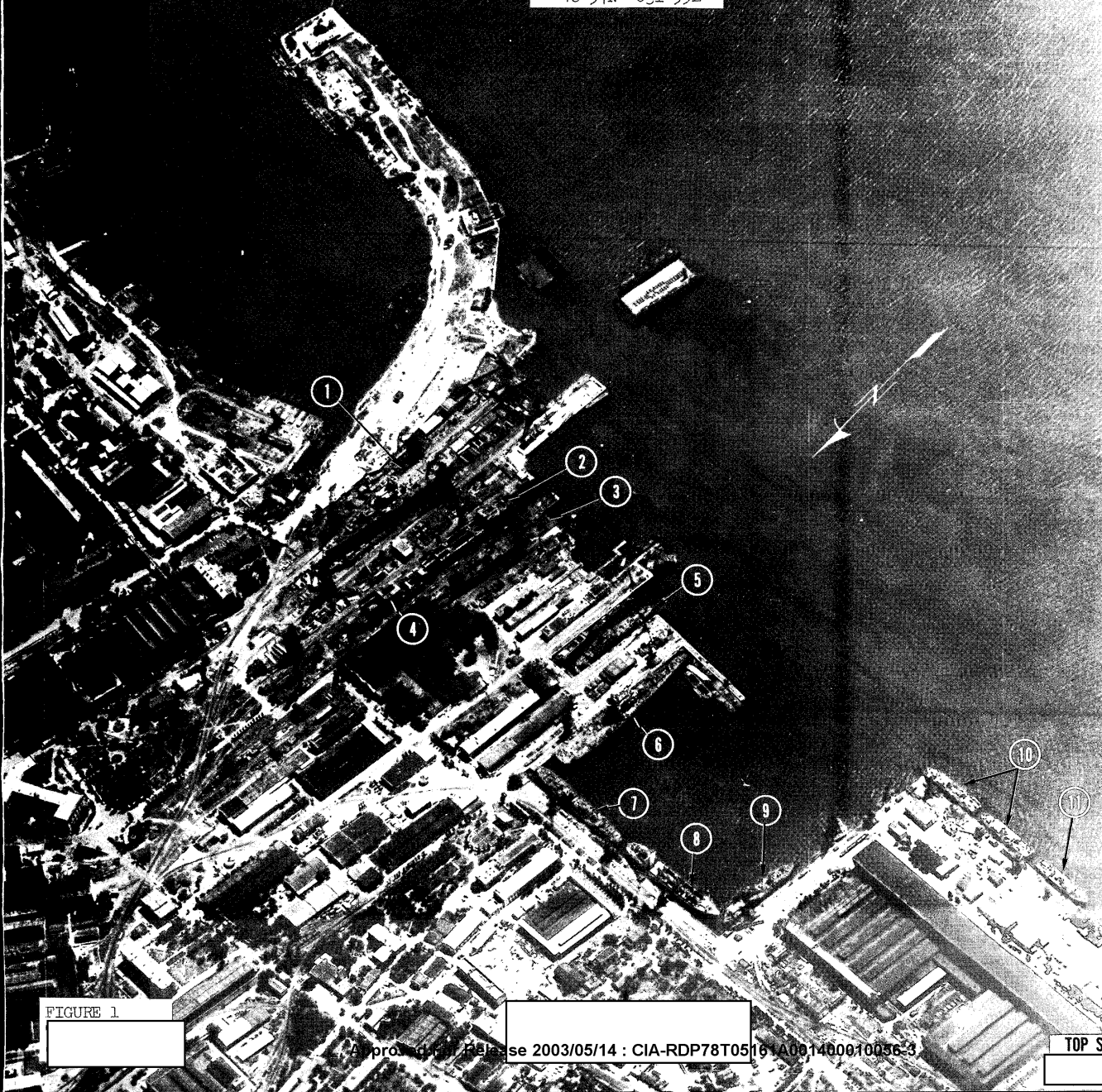


FIGURE 1

TOP SECRET

TOP SECRET

TOP SECRET