

TOP SECRET



I  
MAGERY  
A  
NALYSIS  
D  
IVISION

PIR

PHOTOGRAPHIC INTELLIGENCE REPORT

~~VITAL NATIONAL DEFENSE~~  
STATE SHIPYARD 820

KALININGRAD, USSR

[Redacted]

Declass Review by NIMA/DOD

[Redacted]

25X1

25X1

CIA/PIR 77057

[Redacted]

DATE AUGUST 1966

COPY 39

PAGES 5

GROUP 1  
Excluded from automatic  
downgrading and  
declassification

TOP SECRET

25X1

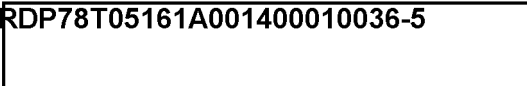
Approved For Release 2003/05/14 : CIA-RDP78T05161A001400010036-5

Approved For Release 2003/05/14 : CIA-RDP78T05161A001400010036-5

Approved For Release 2003/05/14 : CIA-RDP78T05161A001400010036-5

RECORD COPY	COPY NO.	PUB. DATE	LOCATION	MASTER	DATE RECEIVED	LOCATION											
DISPOSITION DATE(S)				STOCK	MINIMUM	MAXIMUM											
CUT TO COPIES	0	DATE	1-73	CUT TO COPIES	DATE	COPIES DESTROYED											
CUT TO COPIES		DATE		CUT TO COPIES	DATE												
CUT TO COPIES		DATE		MASTER	DATE												
DATE			RECEIVED OR ISSUED			NUMBER OF COPIES			DATE			RECEIVED OR ISSUED			NUMBER OF COPIES		
MO.	DAY	YR.	REC'D	ISS'D	BAL	MO.	DAY	YR.	REC'D	ISS'D	BAL	REC'D	ISS'D	BAL			
8	12	68		9	9												
8	8	72															

Approved For Release 2003/05/14 : CIA-RDP78T05161A001400010036-5



TOP SECRET

CIA/PIR-77057

CIA IMAGERY ANALYSIS DIVISION

X1

25X1

STATE SHIPYARD 820

KALININGRAD, USSR



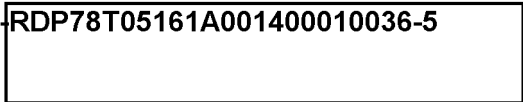
X1



TOP SECRET

25X1

TOP SECRET



CIA/PIR-77057

CIA IMAGERY ANALYSIS DIVISION

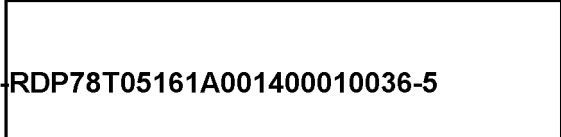
SHIPYARD : STATE SHIPYARD 820  
LOCATION : KALININGRAD, USSR  
GEO COORDS: 54-42N 020-26E



KEY TO ANNOTATIONS

1. Possible vessel under construction on building way (measurements undetermined).  
Hull-shaped staging and scaffolding is visible on the way. See annotation 32,
2. Unidentified merchant ship under construction on building way (apparent LOA approx 315').  
See annotation 31,
3. Possible MIRKA Class PCE in floating dock (LOA approx 270').  
A possible mast on the deck abaft the superstructure can be seen on this vessel. The floating dock appears to have been moved across the basin (see annotation 30,
4. Unidentified merchant ship alongside fitting-out quay (measurements undetermined).  
This vessel appears to be of the same class as the vessel moored outboard. See annotation 27,
5. Unidentified merchant ship (measurements undetermined).  
The upper portion of the superstructure of this vessel is not in place. This vessel appears to be of the same class as the vessel seen at annotation 4 above. See also annotation 27,
6. Probable MIRKA Class PCE alongside fitting-out quay (measurements undetermined).  
Probable gas turbine intakes are visible on the stern of this vessel. See annotation 26,
7. MIRKA/PETYA Class PCE (measurements undetermined).  
See annotation 26,
8. MIRKA/PETYA Class PCE (measurements undetermined).
9. MIRKA/PETYA Class PCE (measurements undetermined).  
See annotation 25,

TOP SECRET



- K1
10. Unidentified merchant ship alongside fitting-out quay (measurements undetermined).
11. Probable MIRKA Class PCE alongside basin quay (measurements undetermined). A mast on the deck abaft the superstructure is visible on this vessel. See annotation 22, [redacted]
- K1
12. MIRKA/PETYA Class PCE (measurements undetermined). See annotation 22, [redacted]
- K1
13. Possible PETYA Class PCE (measurements undetermined). The mast of this vessel appears to be afixed to the after edge of the superstructure. See annotation 23, [redacted]
- 25X1
- K1
14. MIRKA/PETYA Class PCE in floating dock (measurements undetermined). See annotation 21, [redacted]
- K1
15. Possible fish factory trawler in floating dock (measurements undetermined). See annotation 20, [redacted]
- K1
16. Probable fish factory trawler (measurements undetermined). See annotation 19, [redacted]
17. Unidentified large hatch bulk cargo vessel alongside fitting-out quay (measurements undetermined). This vessel appears similar to one seen under construction at annotation 19 below. See also annotation 18, [redacted]
- 25X1
18. Three unidentified small merchant vessels (measurements undetermined). These vessels are characterized by a relatively narrow beam, long superstructure aft of amidships, a deep well deck forward, and a catwalk spanning this well deck from the forecastle along the starboard side to the bridge. Two similar vessels appear at annotation 34 below.
19. Unidentified merchant ship under construction on building way (LOA approx 320'). This vessel is characterized by three large holds and a low superstructure at the stern. This vessel appears similar to the one seen at annotation 17 above. See also annotation 15, [redacted]
- 25X1
- K1
20. Unidentified possible medium trawler under construction on building way (LOA approx 160'). See annotation 14, [redacted]



25X1



TOP SECRET



25

CIA/PIR-77057

CIA IMAGERY ANALYSIS DIVISION

35. Possible refrigerated transport in floating dock (LOA approx 230').

See annotation 1,

5X1

36. Unidentified merchant ship in floating dock (LOA approx 175').

See annotation 1,

5X1

NOTES: (1) Due to the obliquity of this photography reliable measurements along the east-west axis could not be determined.

(2) In most instances lack of sufficient detail and poor stereo precluded further differentiation between the MIRKA and the PETYA Class PCE.

25X

TOP SECRET





TOP SECRET [redacted]

STATE SHIPYARD 820  
KALININGRAD, USSR  
54-42N 020-26E

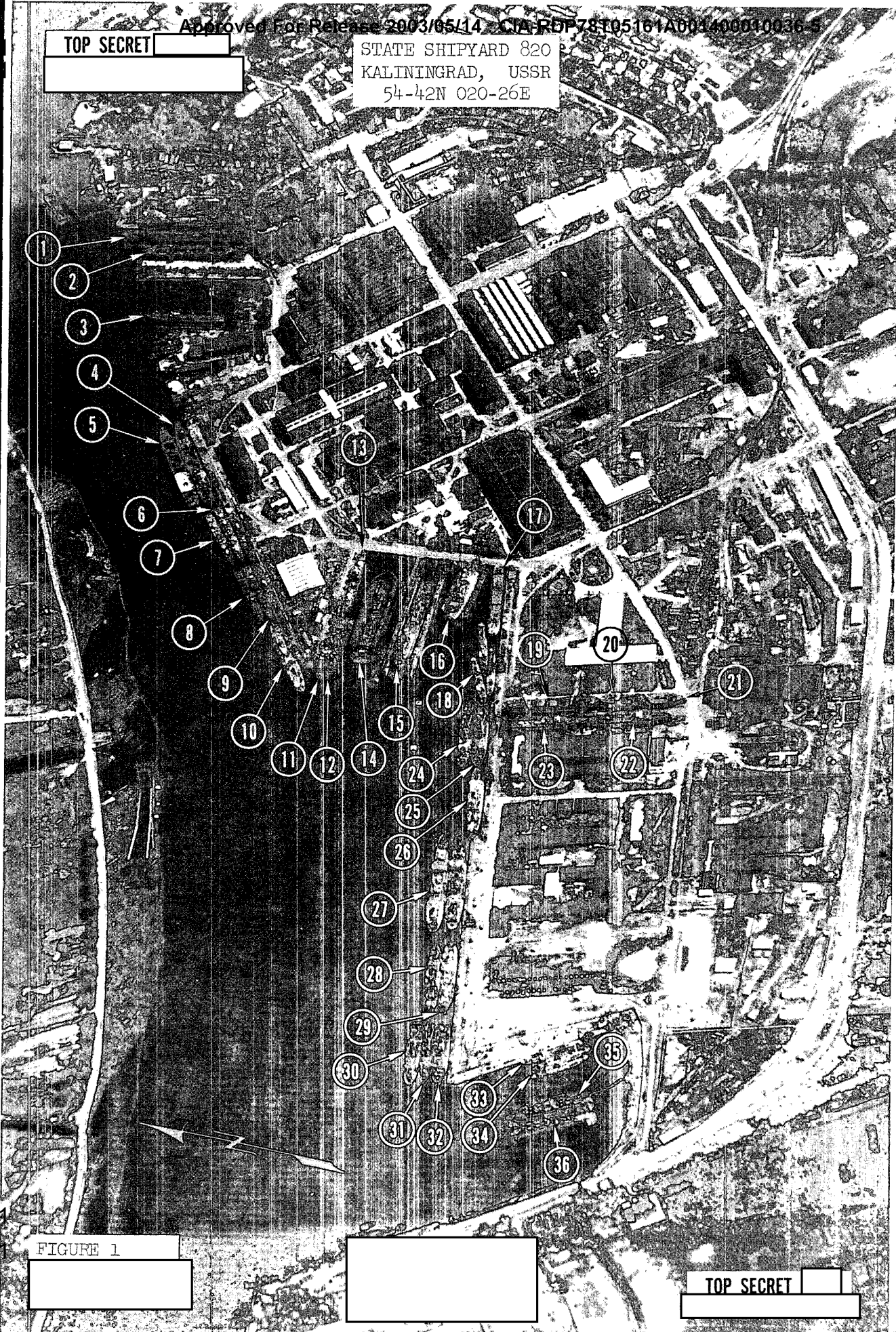


FIGURE 1 [redacted]

[redacted]

TOP SECRET [redacted]

25X1  
25X1

**TOP SECRET**

**TOP SECRET**