

TOP SECRET



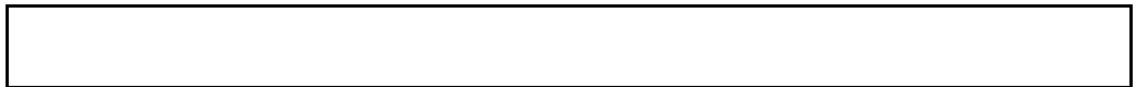
IMAGERY
ANALYSIS
DIVISION

PIR

PHOTOGRAPHIC INTELLIGENCE REPORT


PETROVSKIY SHIPYARD

LENINGRAD, USSR

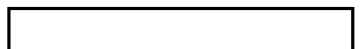


25X1

Declass Review by NIMA/DOD

25X1

CIA/PIR 77049



DATE AUGUST 1966

COPY

PAGES 3

GROUP 1
Excluded from automatic
downgrading and declassification

TOP SECRET

25X1

Approved For Release 2003/05/14 : CIA-RDP78T05161A001400010028-4

Approved For Release 2003/05/14 : CIA-RDP78T05161A001400010028-4

Approved For Release 2003/05/14 : CIA-RDP78T05161A001400010028-4

RECORD COPY	COPY NO.	PUB. DATE	LOCATION	MASTER	DATE RECEIVED	LOCATION											
		DISPOSITION DATE (S)		STOCK	MINIMUM	MAXIMUM											
CUT TO COPIES	0	DATE	1-73	CUT TO COPIES	DATE	COPIES DESTROYED											
CUT TO COPIES		DATE		CUT TO COPIES	DATE												
CUT TO COPIES		DATE		MASTER	DATE												
DATE			RECEIVED OR ISSUED			NUMBER OF COPIES			DATE			RECEIVED OR ISSUED			NUMBER OF COPIES		
MO.	DAY	YR.	RECEIVED OR ISSUED			REC'D	ISS'D	BAL	MO.	DAY	YR.	RECEIVED OR ISSUED			REC'D	ISS'D	BAL
8	12	68	Dist. Unit #41-49			9		9									
8	8	72	Dest # 41-49					0	W	K	G						

Approved For Release 2003/05/14 : CIA-RDP78T05161A001400010028-4

X1

[Redacted]

Approved For Release 2001/05/14 : CIA-RDP78T05161A001400010028-4

~~TOP SECRET~~

[Redacted]

25X1

CIA/PIR-77049

CIA IMAGERY ANALYSIS DIVISION

PETROVSKIY SHIPYARD

LENINGRAD, USSR

[Redacted]

X1

- 1 -

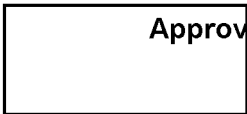
Approved For Release 2001/05/14 : CIA-RDP78T05161A001400010028-4

~~TOP SECRET~~

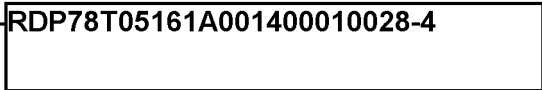
[Redacted]

25X1

X1



~~TOP SECRET~~



25X1

CIA/PIR-77049

CIA IMAGERY ANALYSIS DIVISION

SHIPYARD : PETROVSKIY SHIPYARD
LOCATION : LENINGRAD, USSR
GEO COORDS: 59-58N 030-15E



25X1

KEY TO VESSEL ANNOTATIONS

- 1. Two OSA Class PTFG alongside quay (LOA of each approx 25X1
- 2. Two KOMAR Class PTG alongside quay (LOA of each approx 25X1
- 3. Possible KOMAR Class PTG on ship lift (measurements undetermined).
The probable stern and the after portion of two possible missile launchers can be seen, when viewed in stereo with Frame 10 (Index 20), protruding from the west end of the ship lift structure (see inset).
- 4. Three KOMAR Class PTG moored near the west side of the ship lift (LOA of each)
- 5. Two KOMAR Class PTG alongside quay (LOA of each 25X1
- 6. OSA Class PTFG alongside quay (LOA approx 25X1
- 7. Two OSA Class PTFG on open building/repair way (LOA of each 25X1
See annotations 5 and 6,
- 8. Two KOMAR Class PTG out of water near side launching way (LOA of each .
See annotations 10 and 11,

X1

X1

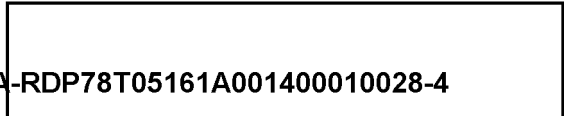
X1

X1

KEY TO FACILITY ANNOTATION

- A. Construction activity is visible on the quay and transverser between the ship lift and the large construction hall. Ground scarring is evident for a length of approximately 450 feet. Objects lying on the tracks of the transverser appear to render it inoperative for an additional distance of approximately 200 feet. At present the transverser appears to service only the area between the launching basin and the way containing the two OSA Class PTFG at annotation 7 above.

~~TOP SECRET~~



25X1

TOP SECRET

PETROVSKY SHIPYARD
03/05/14 : CIA-RDP78T05167A001400010028-4
LENINGRAD, USSR
59-58N 030-15E

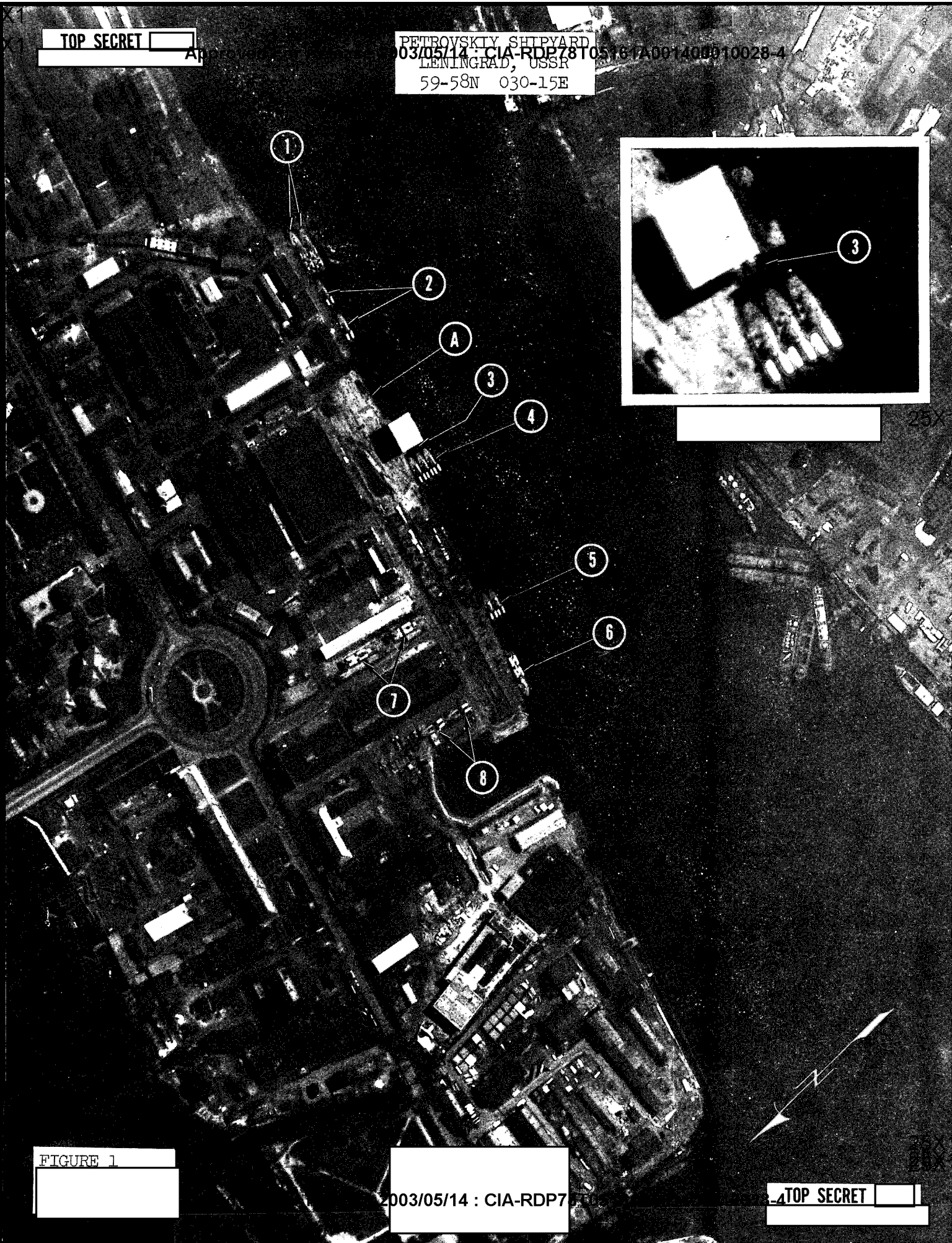


FIGURE 1

03/05/14 : CIA-RDP7

TOP SECRET

TOP SECRET

TOP SECRET