

TOP SECRET

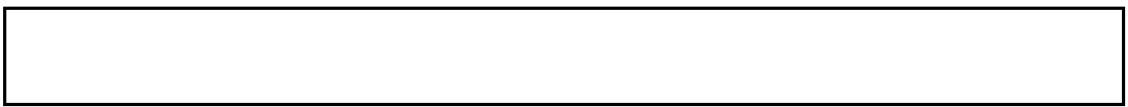


IMAGERY
ANALYSIS
DIVISION

PIR

PHOTOGRAPHIC INTELLIGENCE REPORT

STATUS OF MILITARY FORCES NEAR
THE SINO-SOVIET BORDER



25X1

Declass Review by NIMA/DOD

25X1

CIA/PIR 77031

DATE AUGUST 1966

COPY
PAGES 7

GROUP 1
Excluded from automatic
downgrading and declassification

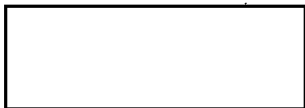
TOP SECRET

25X1

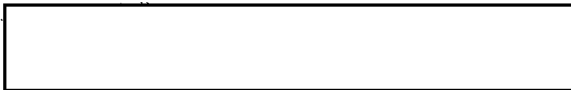
Approved For Release 2003/05/14 : CIA-RDP78T05161A001400010010-3

Approved For Release 2003/05/14 : CIA-RDP78T05161A001400010010-3

X1



TOP SECRET



25X1

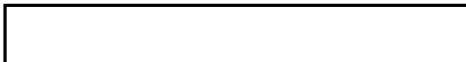
CIA/PIR-77031

CIA IMAGERY ANALYSIS DIVISION

STATUS OF MILITARY FORCES NEAR

THE SINO-SOVIET BORDER

X1



TOP SECRET

25X1

X1
X1

25X1

CIA/PIR-77031

Approved For Release 2003/05/14 : CIA-RDP78T05161A001400010010-3

TOP SECRET

SINO-SOVIET / SINO-MONGOLIAN BORDER ACTIVITY

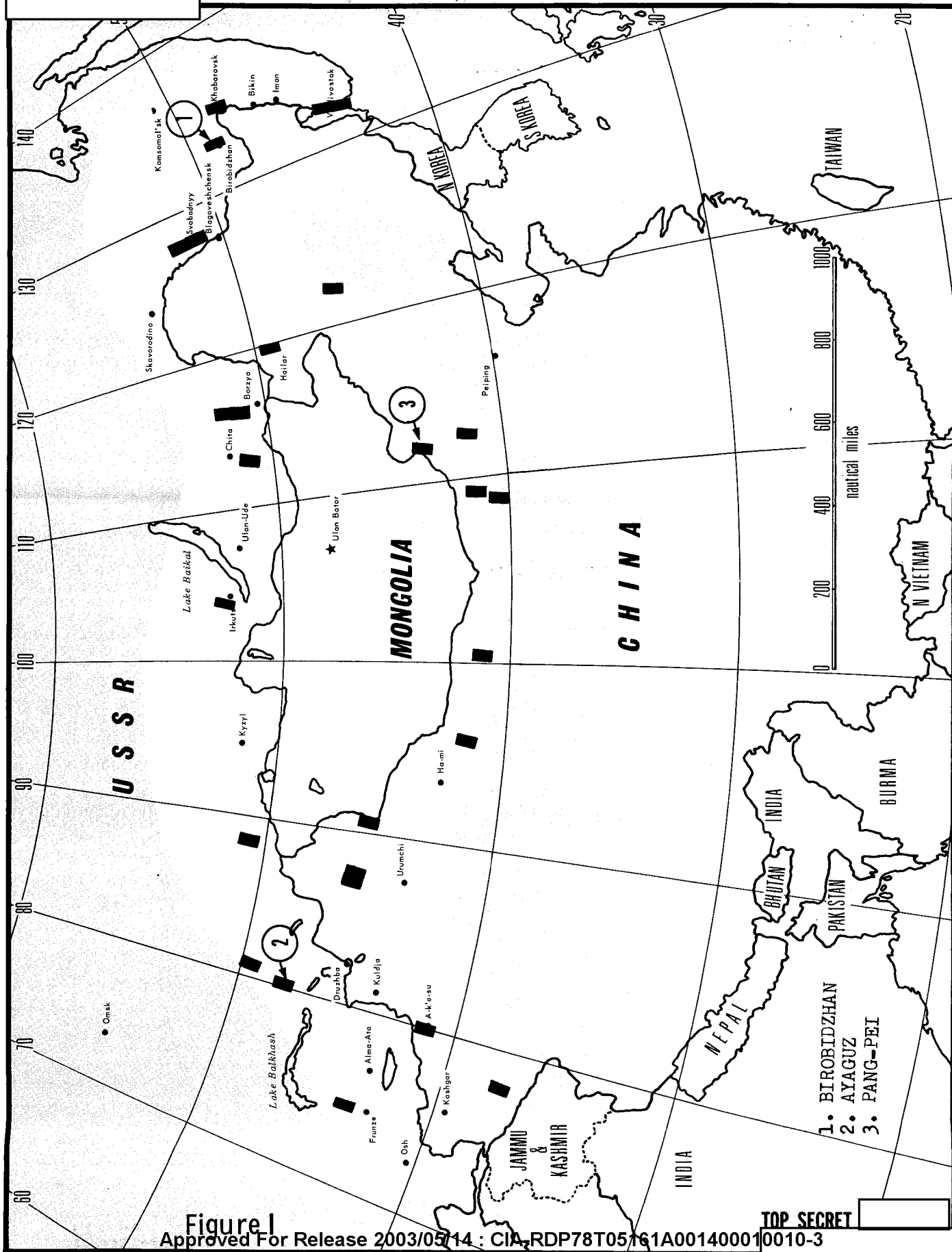


Figure 1
Approved For Release 2003/05/14 : CIA-RDP78T05161A001400010010-3

TOP SECRET

25X1

25X1

X1

CIA IMAGERY ANALYSIS DIVISION

STATUS OF MILITARY FORCES NEAR THE SINO-SOVIET BORDER

A search of all portions of the Sino-Soviet/Sino-Mongolian Border covered on [] was accomplished in accordance with the prescribed procedure of analysing each new mission in an attempt to determine possible changes in the type or level of military activity within 150 nm of the Sino-Soviet/Sino-Mongolian Border (significant items within 300 nm may also be included).

Figure 1 graphically illustrates the portions of the border areas that were covered by photography (cloud cover and other limitations of photography quality are not depicted).

WAC 203

BIROBIDZHAN ARMY BARRACKS AL-1, USSR 48 47N-132 53E

This installation continues to show a medium to high level of activity. Construction continues to be evident in the vehicle park area, and the possible off-loading of construction materials is observed at the rail spur that serves this installation.

One of the two vehicle sheds in Area J (NPIC Report [] that was reported under construction in [] (CIA/PIR 67273), is now complete and the other is nearing completion. An additional possible vehicle shed is now observed within this area. It is in an early stage of construction.

Two buildings are observed under construction (one a probable multistory barracks) near Area D6 (NPIC []). Comparative photography of [] reveals that these buildings were in a very early stage of construction. Two additional buildings in this same general area are now observed in the early stages of construction.

Four new possible storage buildings (one under construction) are located north of Area D3 (NPIC []). Two of these buildings were under construction on photography of [].

Fifteen probable tents which were not present on photography of [] are also observed within the installation.

Four new buildings (since photography of [], approximately 15 rail cars, 3 large cargo trucks, 2 unidentified vehicles, and materials scattered along the rail spur, are all located in Area A2 (NPIC []) a rail-to-road access area.

WAC 244

AYAGUZ MILITARY ACTIVITY, USSR 47 57N-080 23E

A medium to high level of activity is apparent throughout the Ayaguz Complex. Three new buildings are under construction in the SAM support facility which is located NW of town, and several other new buildings have been constructed throughout the complex. A small secured area, located immediately East of the SAM support facility, contains approximately 75 large possible containers.

All of the previously reported radar facilities that are located at the probable military barracks area one km WSW of Ayaguz appear to be active. Also observed within this area are 9 probable tracked vehicles and approximately 75 unidentified vehicles.

A new road appears to be under construction from the south edge of Ayaguz to the north edge of Ayaguz Airfield. One light, single engine aircraft was observed on the airfield. New, since photography of [] is one BARLOCK type radar unit with 5 probable van trucks and 6 unidentified pieces of equipment, all located on the west side of the airfield. Also observed in the center of the airfield is one possible radar mound under construction. One of the two sod runways is approximately 9,000 feet long and activity appears to have increased since previous photographic coverage - the other runway is approximately 4,200 feet in length.

WAC 288

PANG-PEI (ERH-LIEN), CHINA 43 42N-111 59E

A high level of construction activity is observed throughout this complex. Located immediately south of Pang-pei is a new rail yard that is under construction (see Figure 2). The former rail facilities are still very active and a large amount of unidentified material is scattered throughout the rail yard. The construction of this new rail facility will approximately double the rail capacity of Pang-pei. Approximately 200 pieces of rolling stock are noted throughout the rail complex. This is a decrease in the number of rail cars that have been observed on photography of previous missions.

New building construction is located on both the west and south edges of Pang-pei (see Figure 2). This new construction appears to be related to the new rail facility--possibly additional housing and storage.

Approved For Release 2008/08/14

~~TOP SECRET~~

CIA-RDP78T05161A001400010010-3

CIA/PIR-77031

CIA IMAGERY ANALYSIS DIVISION

The small rail facility that is located on the Mongolian side of the border shows no significant change in facilities; however, approximately 40 pieces of rolling stock were observed within this facility. Previous photography has shown a maximum of 12 rail cars at this installation.

~~TOP SECRET~~

CIA-RDP78T05161A001400010010-3

X1
X1

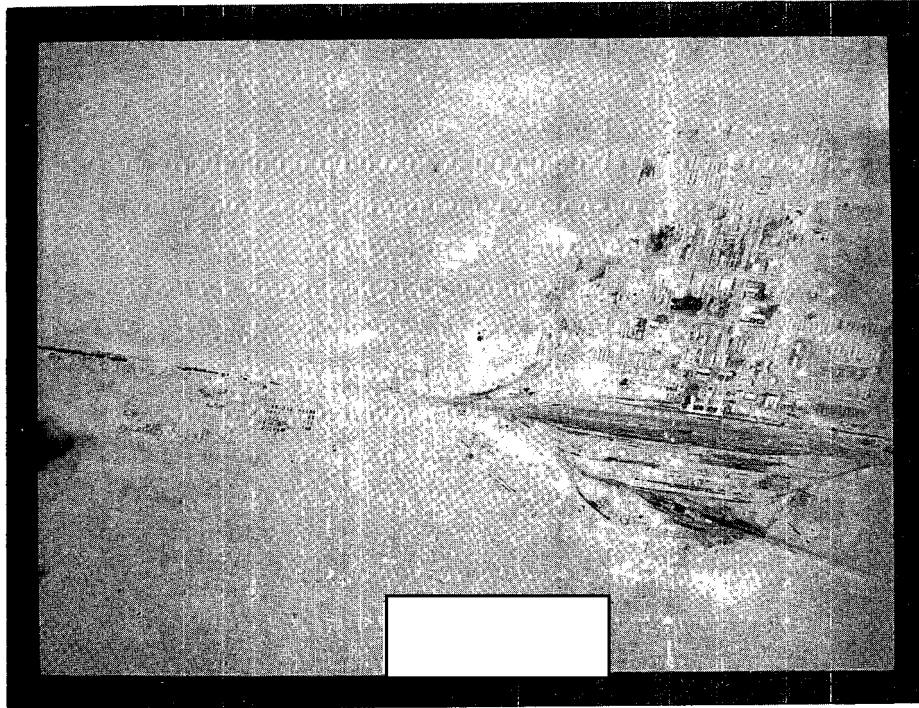
TOP SECRET

Approved For Release 2003/05/14 : CIA-RDP78T05161A001400010010-3

PANG-PEI (ERH-LIEN), CHINA

CIA/PIR-77031

25X1



25X1



25X1

Figure 2

Approved For Release 2003/05/14 : CIA-RDP78T05161A001400010010-3

TOP SECRET
[Redacted]

25X1

25X1

X1

Approved For Release 2001/06/04

~~TOP SECRET~~

CIA-RDP78T05161A001400010010-3

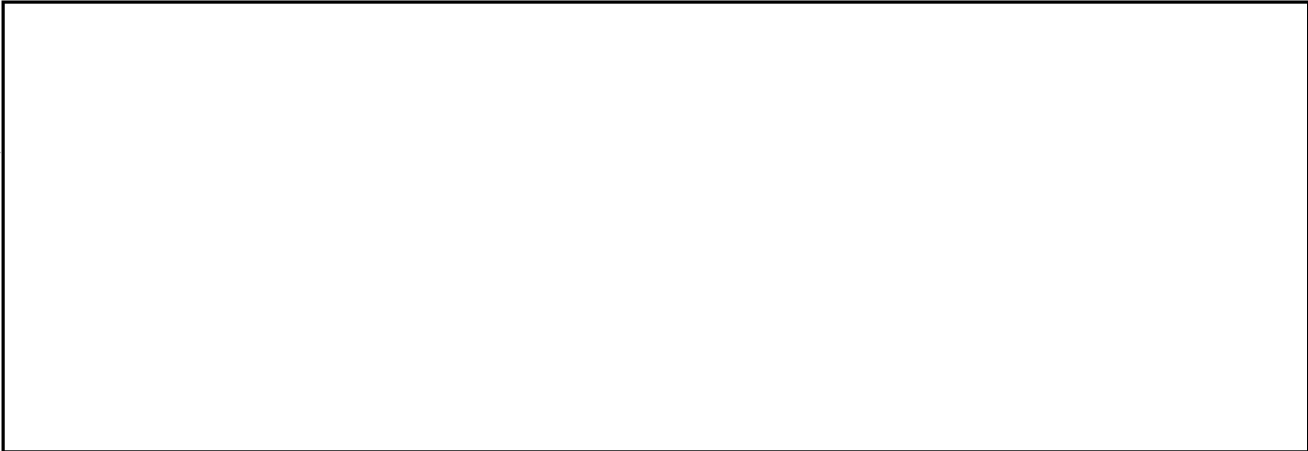
25X1

CIA/PIR-77031

CIA IMAGERY ANALYSIS DIVISION

REFERENCES

X1



MAPS OR CHARTS

USATC 200 Series, Sheet 0244-4A1, 1st Edition, November 1959 (SECRET)
USATC 200 Series, Sheet 0288-4A, 1st Edition, January 1960 (SECRET)
USAF ONC E-9, 1st Edition, September 1960 (CONFIDENTIAL)

DOCUMENTS

X1

NPIC [redacted] SOVIET MILITARY ORDER OF BATTLE FAR EAST MD,
September 1965 (TOP SECRET [redacted])

25X1

X1

CIA/PIR 67273, [redacted] STATUS OF MILITARY FORCES NEAR THE SINO-
SOVIET BORDER, May 1966 (TOP SECRET [redacted])

25X1

REQUIREMENT

C-C16-83,744

CIA/IAD PROJECT

30010-7

25X1

TOP SECRET

TOP SECRET