

TOP SECRET



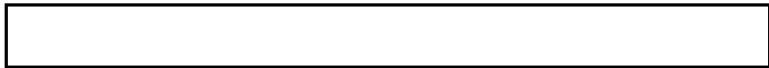
IMAGERY  
ANALYSIS  
DIVISION

PIR

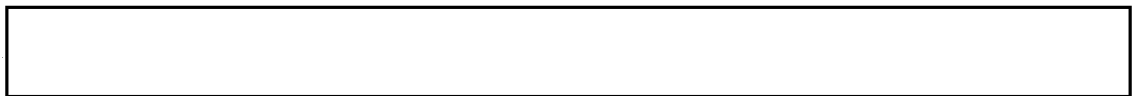
PHOTOGRAPHIC INTELLIGENCE REPORT

GORKIY SHIPYARD 112

GORKIY, USSR



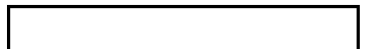
Declass Review by NIMA/DOD



25X1

25X1

CIA/PIR 77029



DATE JULY 1966

COPY 39

PAGES 6

TOP SECRET

GROUP 1  
Excluded from automatic  
downgrading and declassification

25X1

Approved For Release 2003/05/14 : CIA-RDP78T05161A001400010008-6

Approved For Release 2003/05/14 : CIA-RDP78T05161A001400010008-6



**TOP SECRET**

CIA IMAGERY ANALYSIS DIVISION

GORKIY SHIPYARD 112

GORKIY, USSR

**TOP SECRET**

CIA IMAGERY ANALYSIS DIVISION

SHIPYARD : GORKIY SHIPYARD 112  
LOCATION : GORKIY, USSR  
GEO COORDS: 56-22N 043-53E

KEY TO NUMBERED ANNOTATIONS ON FIGURE 1

1. Unidentified circular object resting on its transverse axis (diameter approx 25').  
See annotation 15, [REDACTED]
2. Ten to fifteen unidentified circular objects resting on their transverse axes.  
Diameters of these objects range from approximately 20 - 30 feet. See annotation 7, [REDACTED]
3. Probable barge (LOA approx 210').
4. Large float probably being utilized as a fitting-out platform.
5. Unidentified vessel (LOA approx 135').
6. Berthing space previously occupied by a 185 foot unidentified SS. This submarine could be berthed in the same position (where it was previously observed on [REDACTED] alongside the 250 foot probable barge at annotation 7 below. If present, this small submarine could be obscured from view by the larger vessel due to the obliquity of this photography. Imagery that could equate to a possible sail is visible extending slightly above the deck of the probable barge. See annotation 17, [REDACTED]
7. Probable barge (LOA approx 250').  
See annotation 14, [REDACTED]
8. Floating screens.  
These screens are probably being utilized to preclude observation of the fitting-out area from the river. Although no submarines can be identified on this monoscopic photography (in this area of the yard), imagery possibly equating to a bow or stern of a submarine can be seen extending from the point of the "V" shaped area of the floating screens back approximately 35 feet to a very cluttered area. Imagery definition is very poor in this cluttered area; however, a very faint line can be discerned extending through this cluttered area for about 200 feet. This line is plainly visible for approximately 45 feet between the clutter and the quay. The distance

CIA IMAGERY ANALYSIS DIVISION

between the two ends of this line is approximately 280 feet indicating that the possible "J" Class SSG observed on [redacted] could possibly still be present.

- 9. Probable barge (LOA approx 200').
- 10. Possible YR/APL (LOA approx 320').  
This vessel has a stepped-down bow, stepped-down stern, and a unique rectangular superstructure, approximately 70 feet long and 25 feet wide positioned just forward of amidship. See annotation 10, [redacted]
- 11. Unidentified vessel (LOA approx 395').  
Visible topside characteristics include a very flat superstructure amidships, two possible large lifeboats forward, and a stepped-down bow and stern. See annotation 12, [redacted]
- 12. Possible YR/APL (LOA approx 315').  
This vessel appears to have a large "box-like" superstructure extending nearly the whole length of the ship. A stepped-down bow was also noted. See annotation 11, [redacted]
- 13. ZEYA Class YRSN (LOA approx 235').  
The unique small superstructure forward, long depressed area amidship, raised area aft and overall length all equate to recognition characteristics associated with the ZEYA Class YRSN. See annotation 9, [redacted]
- 14. Probable barge (LOA approx 270').  
See annotation 8, [redacted]
- 15. Probable SORMOVICH type hovercraft (LOA approx 90'), resting on a large float.  
This hovercraft appears identical to the SORMOVICH hovercraft except for a small raised area just forward of amidship. See annotation 6, [redacted]
- 16. SOVETSKI AZERBAIJAN type Train Ferry (LOA approx 440').  
See annotation 5, [redacted]
- 17. Two transporter docks (LOA of easternmost dock approx 435', LOA of westernmost dock approx 460').  
The 460 foot dock is now the westernmost dock instead of the 435 foot dock on [redacted] See annotation 4, [redacted]
- 18. Transporter dock (LOA approx 440').  
This may be the same dock at annotation 3, [redacted] on which the stern end-point was partially obliterated.

25X1

TOP SECRET

25X1

CIA/PIR-77029

CIA IMAGERY ANALYSIS DIVISION

19. Possible hydrofoil (LOA approx 95'), resting on a large rectangular floating platform. Identification is based on the possible foil protruding from under the hull near the stern, the probable vertical fin along the centerline of the hull near the stern, and the overall hull shape with the rounded bow having a similar appearance to that of the nose and fuselage of an aircraft.
20. Probable BUREVESTNIK type hydrofoil (LOA approx 140'), resting on a large rectangular floating platform. Identification is based on the vertical fin mounted slightly forward of the pointed stern along with the observation dome just forward of amidship and the overall length. Large rectangular floating platform on which this craft is placed has a large heavy rectangular post at each corner - giving this structure the appearance of an incomplete oil drilling platform. See annotation 2,
21. Possible YR/APL (LOA approx 190').
22. Transporter dock (LOA approx 450').

25X1

## KEY TO FACILITY ANNOTATION ON FIGURE 1

- A. Probable two-bay, shop-type building under construction. Overall dimensions approximately 480 feet by 155 feet. The southernmost bay appears complete. The northernmost bay appears to lack only a small section on the eastern end. See annotation A,

25X1

- 4 -

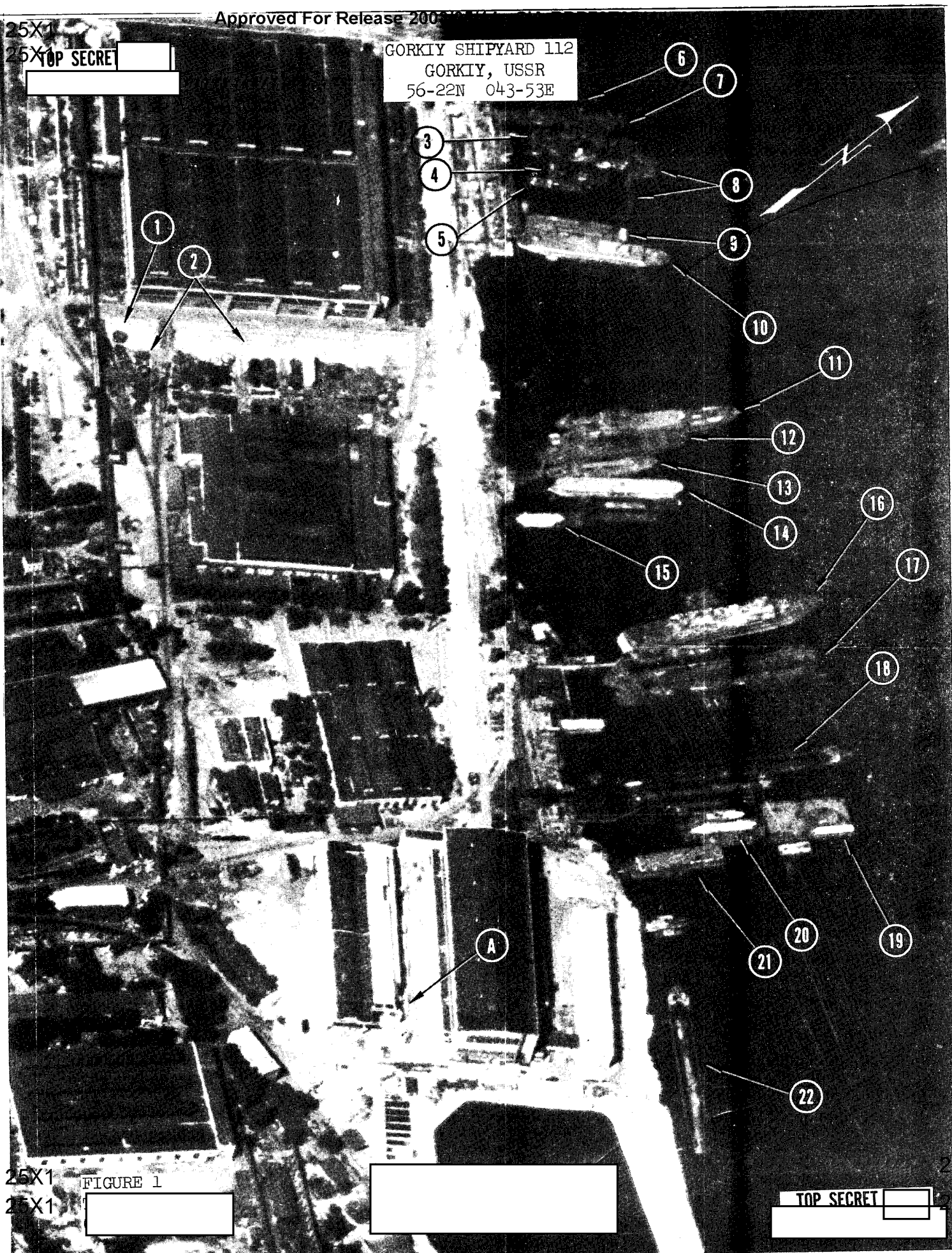
TOP SECRET

25X1

25X1

TOP SECRET

GORKIY SHIPYARD 112  
GORKIY, USSR  
56-22N 043-53E



25X1

FIGURE 1

25X1

[Redacted]

[Redacted]

TOP SECRET

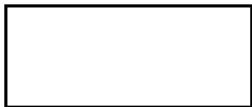
[Redacted]

25X1

25X1



X1



TOP SECRET



25X

CIA/PIR-77029


CIA IMAGERY ANALYSIS DIVISION

25X

SHIPYARD : GORKIY SHIPYARD 112  
LOCATION : GORKIY, USSR  
GEO COORDS: 56-22N 043-53E





KEY TO VESSEL ANNOTATIONS ON FIGURE 2

- 1. Unidentified vessel under construction (LOA approx 330').  
See annotation 20, 
- 2. Transporter dock under construction (LOA of completed portion approx 450').

X1

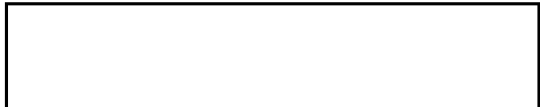
KEY TO FACILITY ANNOTATIONS ON FIGURE 2

- A. Construction is continuing on this large new building (overall dimensions approx 1,330 feet by 430 feet).  
There is no evidence that the main transverser is being extended to serve this building. See annotation A, 
- B. Construction is continuing on the third bay of this new construction hall (overall dimensions 515 feet by 405 feet).  
The roof appears to be approximately four-fifths complete. See annotation C, 

25X

X1

TOP SECRET



25X

TOP SECRET

GORKIY SHIPYARD 112  
Approved For Release 2003/05/14 : CIA-RDP78T05161A001400010008-6  
GORKIY, USSR  
56-22N 043-53E

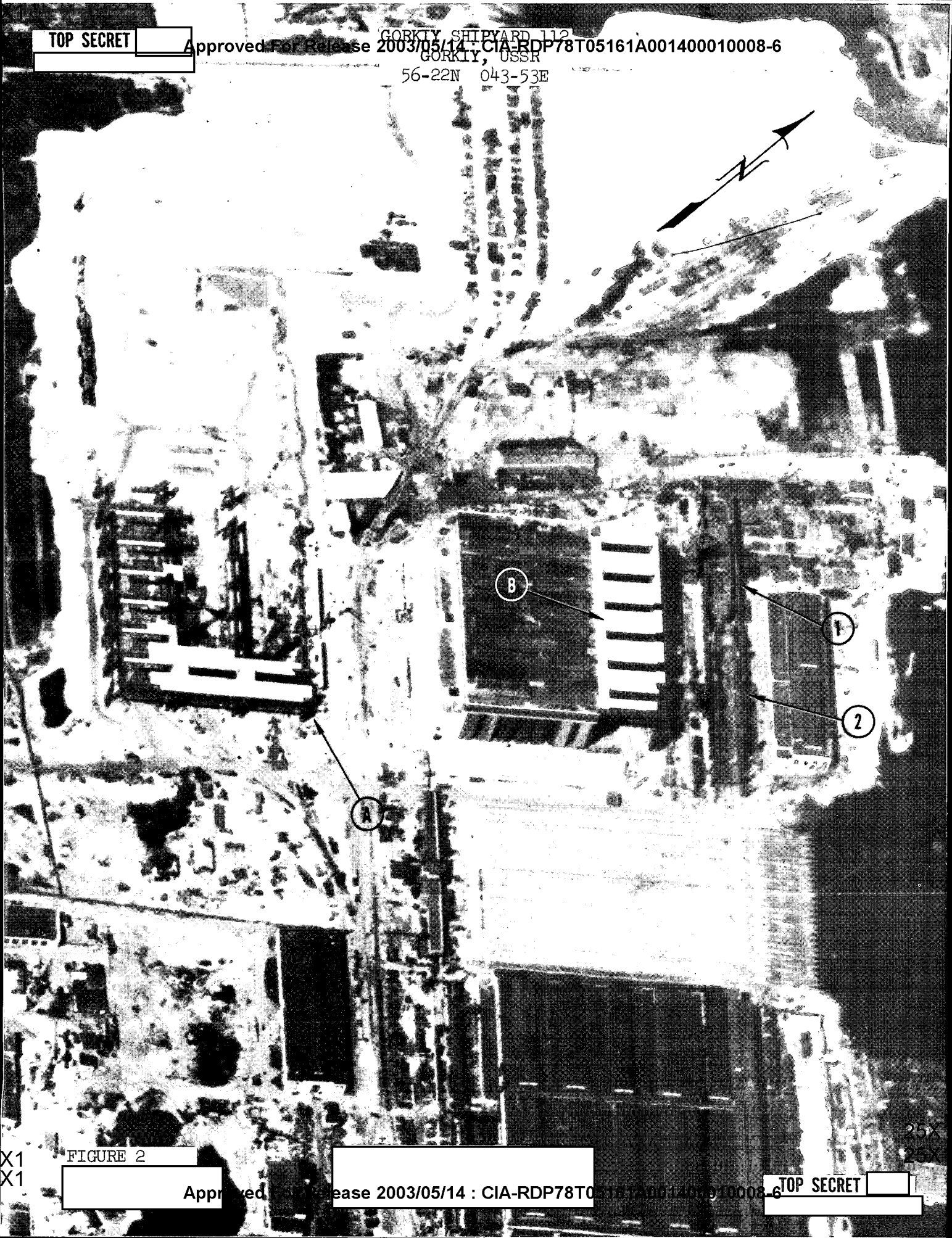


FIGURE 2

Approved

Approved For Release 2003/05/14 : CIA-RDP78T05161A001400010008-6

TOP SECRET

X1  
X1

**TOP SECRET**

**TOP SECRET**