

TOP SECRET



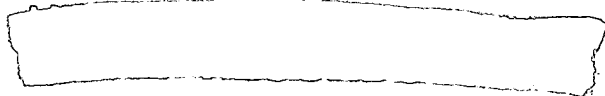
IMAGERY  
ANALYSIS  
DIVISION

PIR

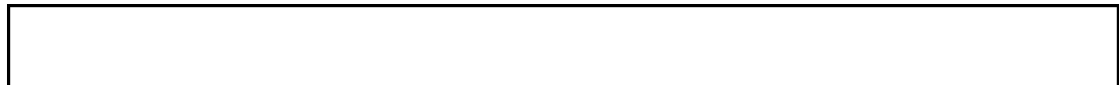
PHOTOGRAPHIC INTELLIGENCE REPORT

CHI-LIN ARMY BARRACKS AREA NNW

CHI-LIN (KIRIN), CHINA



Declass Review by NIMA/DOD



25X1

25X1

CIA/PIR 77027



DATE JULY 1966

COPY

PAGES II

GROUP 1  
Excluded from automatic  
downgrading and declassification

TOP SECRET

25X1

Approved For Release 2003/05/14 : CIA-RDP78T05161A001400010006-8

Approved For Release 2003/05/14 : CIA-RDP78T05161A001400010006-8

Approved For Release 2003/05/14 : CIA-RDP78T05161A001400010006-8

RECORD COPY	COPY NO.	PUB. DATE	LOCATION	MASTER	DATE RECEIVED	LOCATION											
DIAGRAM				LEVEL	MAXIMUM	8											
CUT TO COPIES	DATE	CUT TO COPIES	DATE	COPIES DESTROYED													
CUT TO COPIES 0	DATE 1-73	CUT TO COPIES	DATE														
CUT TO COPIES	DATE	MASTER	DATE														
DATE			RECEIVED OR ISSUED			NUMBER OF COPIES			DATE			RECEIVED OR ISSUED			NUMBER OF COPIES		
MO.	DAY	YR.	REC'D	ISS'D	BAL	MO.	DAY	YR.	REC'D	ISS'D	BAL	MO.	DAY	YR.	REC'D	ISS'D	BAL
0	9	69			8						8						
8	7	72															
			Dest. Unit # 41-48														
			<i>Dest # 41-48</i>						<i>0 WK 6</i>								

Approved For Release 2003/05/14 : CIA-RDP78T05161A001400010006-8

TITLE 1170

SEC. CLASS. LOCATION

X1

77 27 JULY 1966

24939

25X1

~~TOP SECRET~~

25X1

CIA/PIR-77027

CIA IMAGERY ANALYSIS DIVISION

CHI-LIN ARMY BARRACKS AREA NNW

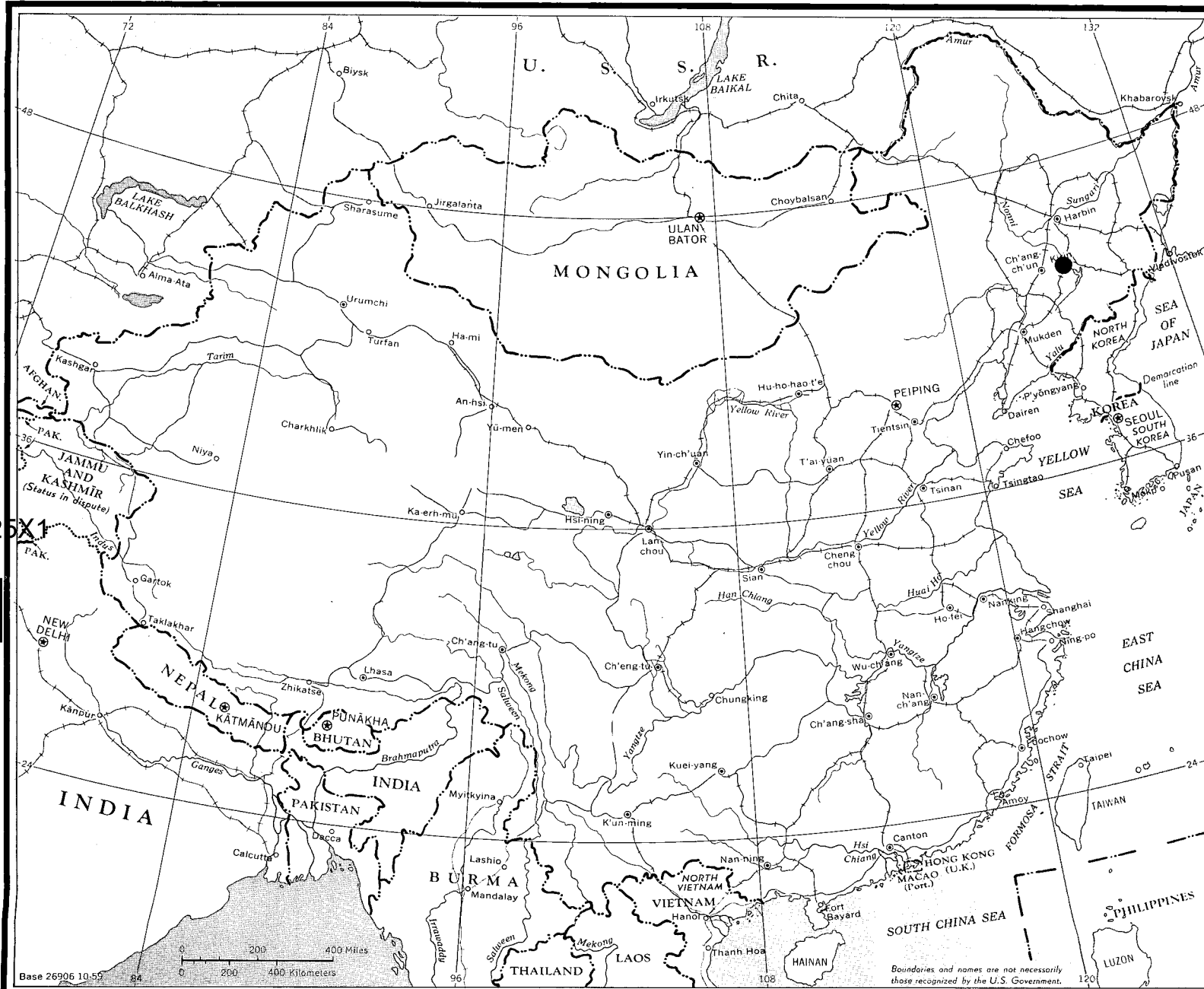
CHI-LIN (KIRIN), CHINA

43 53N-126 31E

25X1

25X1

~~TOP SECRET~~



CIA IMAGERY ANALYSIS DIVISION

CIA/PIR-77027

PREFACE

Chi-lin (Kirin) is located on the Sung-Hua Chiang (Sungari River) in the Shenyang (Mukden) Military Region. The Sino-Korean Border is located approximately 125 nm south of Chi-lin. Elements of the 16th and 46th Armies are reported to be in the Chi-lin area (see reference page).

The graphic material presented in this report is taken from [redacted] [redacted] -the latest good coverage of the target area. (not stereo). Comparative photography from earlier missions is noted within the text and on the reference page.

This installation has been separated into four areas, primarily on the basis of location. Each area has been designated by an alphabetical letter, and significant items (such as vehicles) within the alphabetically designated areas are indicated by numerals.

Mensuration data is provided only for buildings that appear to be directly related to vehicle storage or maintenance, and for the weapons firing ranges.

TOP SECRET

Approved For Release 2003/05/14 : CIA-RDP78T05161A001400010006-8



BARRACKS AREA NNW

CIN. HQ

Sungai

River



Figure 2

CHI-LIN ARMY BARRACKS AREA NNW  
CHI-LIN, CHINA  
43 53N-126 31E

The Chi-lin Army Barracks NNW is located approximately three nautical miles NW of Chi-lin and west of the Sungari River. Elements of both the 46th Army and the 16th Army are reported to be located in the Chi-lin area; however, a direct relationship to either of these armies cannot be established from the available photography.

This installation has been divided into five separate areas for the purpose of analysis. Figures 3 through 6 show the installation both as a whole and as selected areas.

A. BARRACKS AREA (Figure 4)

An analysis of comparative photography [redacted] shows that little change has occurred within this area to the buildings and grounds. An increase in the number of vehicles and the removal of two buildings appear to be the only significant changes that have occurred.

25X1

- 10 large probable barracks buildings
- 8 small possible barracks buildings
- 2 probable messhall buildings
- 4 large storage/support buildings
- 15 (approximately) small storage/support buildings

- Item 1 - 41 unidentified possible vehicles
- Item 2 - 72 cargo trucks
- Item 3 - 62 cargo trucks
- Item 4 - 31 unidentified possible vehicles

B. BARRACKS AREA (Figure 5)

No significant changes have occurred to the buildings and grounds within this area since photography of [redacted] (See inset on Figure 6).

25X1

25X1



TOP SECRET

CIA/PIR-77027

CIA IMAGERY ANALYSIS DIVISION

- 5 large probable barracks buildings
- 1 messhall-type building

- Item 1 - 12 cargo trucks and 15 unidentified possible vehicles
- Item 2 - 4 unidentified possible vehicles

C. BARRACKS AREA (Figure 6)

This area, as areas "A" and "B", reflects little change to the buildings and grounds since photography of [redacted] (See Figure 6 inset).

- 18 probable barracks buildings
- 2 probable messhall buildings
- 1 auditorium-type building
- 1 probable administration building
- 1 probable vehicle storage building 35 x 220 ft.
- 25 (approximately) storage/support buildings

- Item 1 - 8 cargo trucks
- Item 2 - 7 cargo trucks and 3 unidentified vehicles

D. UNIDENTIFIED AREA (Figures 3 and 6)

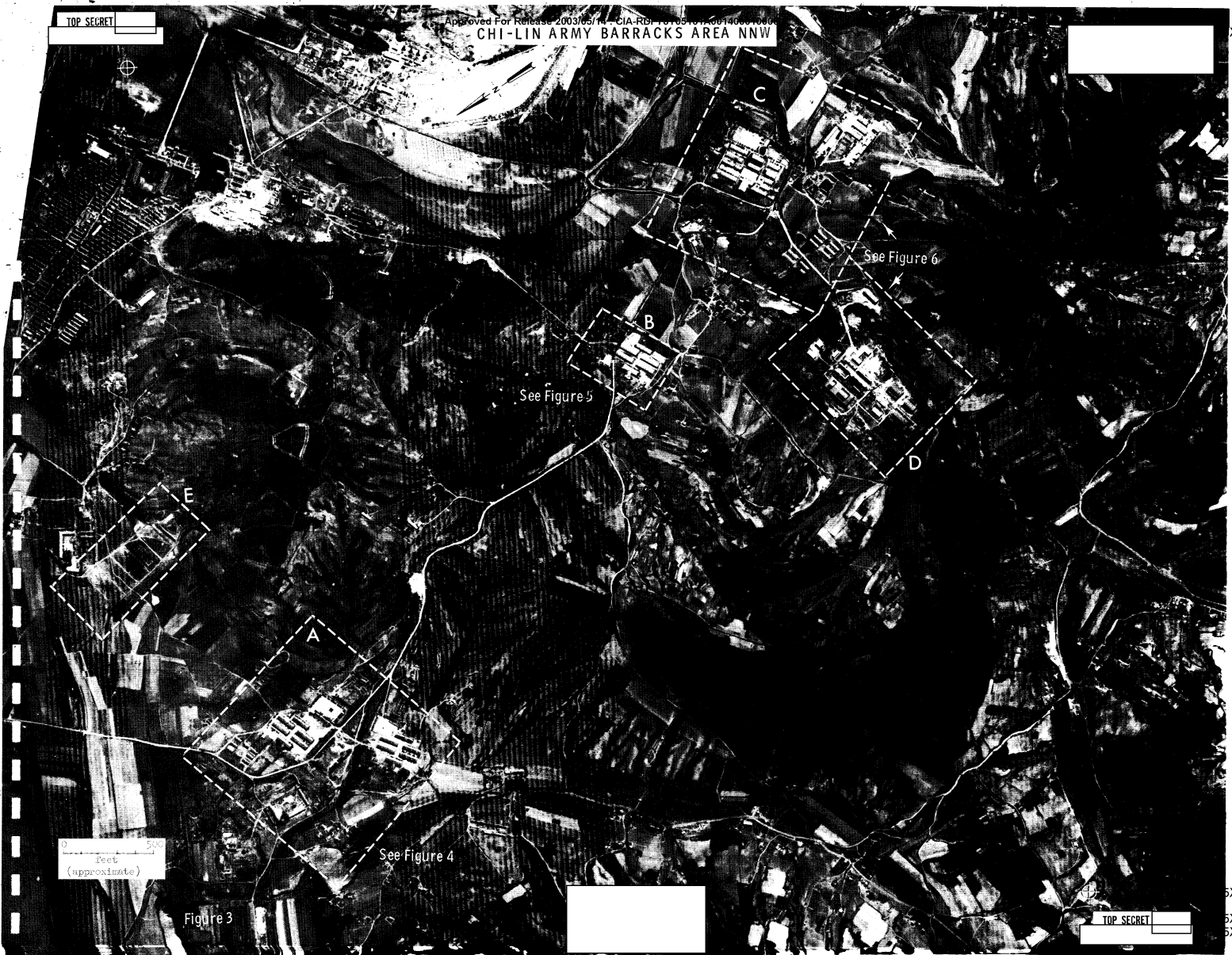
This area appears to contain a light industrial type of activity-- possibly related to vehicles as some of the monitor roof buildings are similar to higher echelon vehicle maintenance buildings.

E. SUBCALIBER FIRING RANGE (Figure 3)

This facility was constructed between photography of [redacted] [redacted] Activity on the range appears to be at a medium level. There are no apparent facilities at this range for the use of vehicle mounted weapons.

TOP SECRET

25X1  
25X1



Approved For Release 2003/05/14 : CIA-RDP78T05161A001400010006-8  
CHI-LIN ARMY BARRACKS AREA NNW

TOP SECRET

Feet  
(approximate)

Figure 3

See Figure 4

See Figure 5

See Figure 6

TOP SECRET

X1

5X1  
5X1  
5X1

25X1  
25X1

Approved For Release 2003/05/14 : CIA-RDP78T05161A00140001000-8

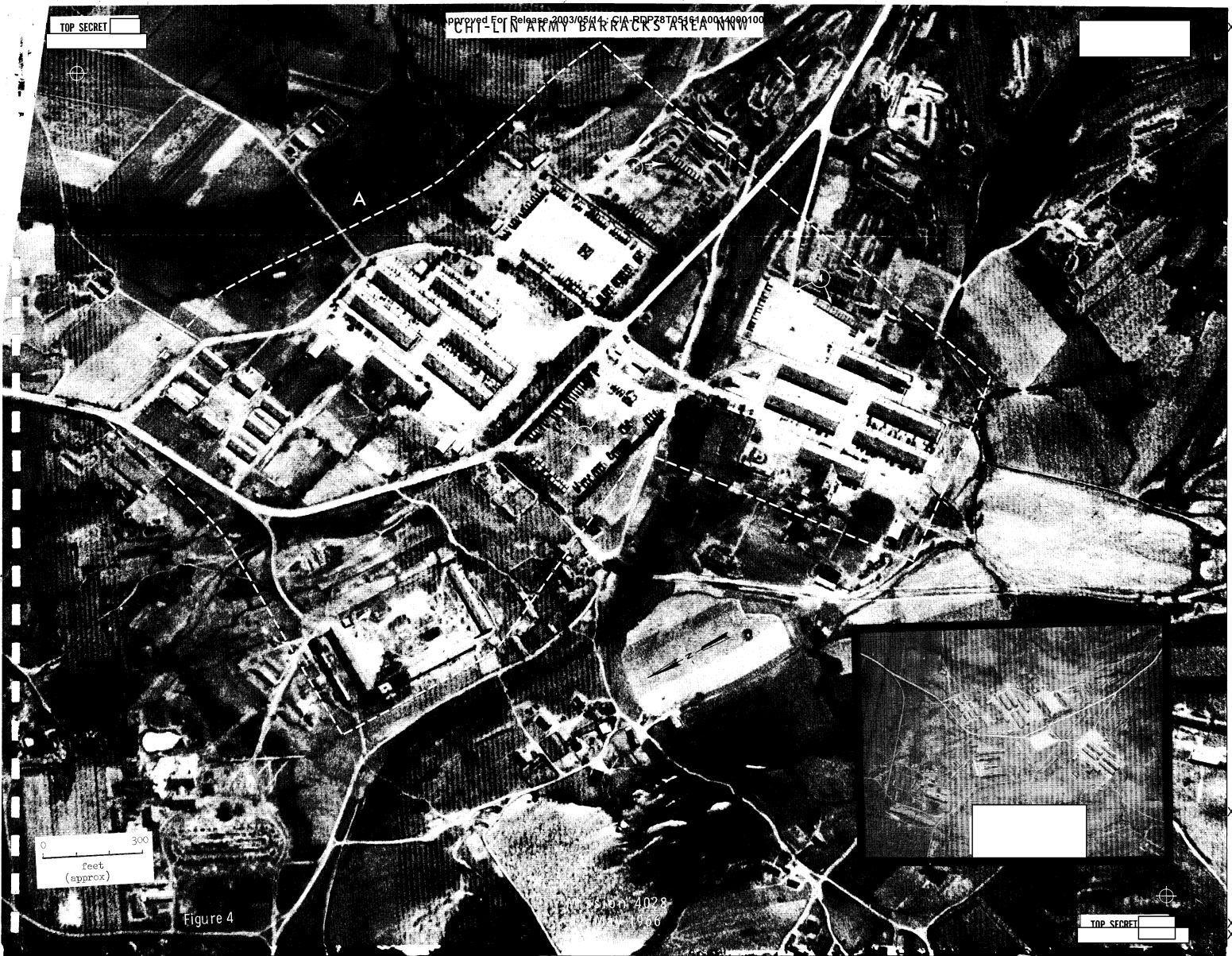


Figure 4

TOP SECRET

Approved For Release 2003/05/14 : CIA-RDP78T05161A00140010006

# CHI-LIN ARMY BARRACKS AREA

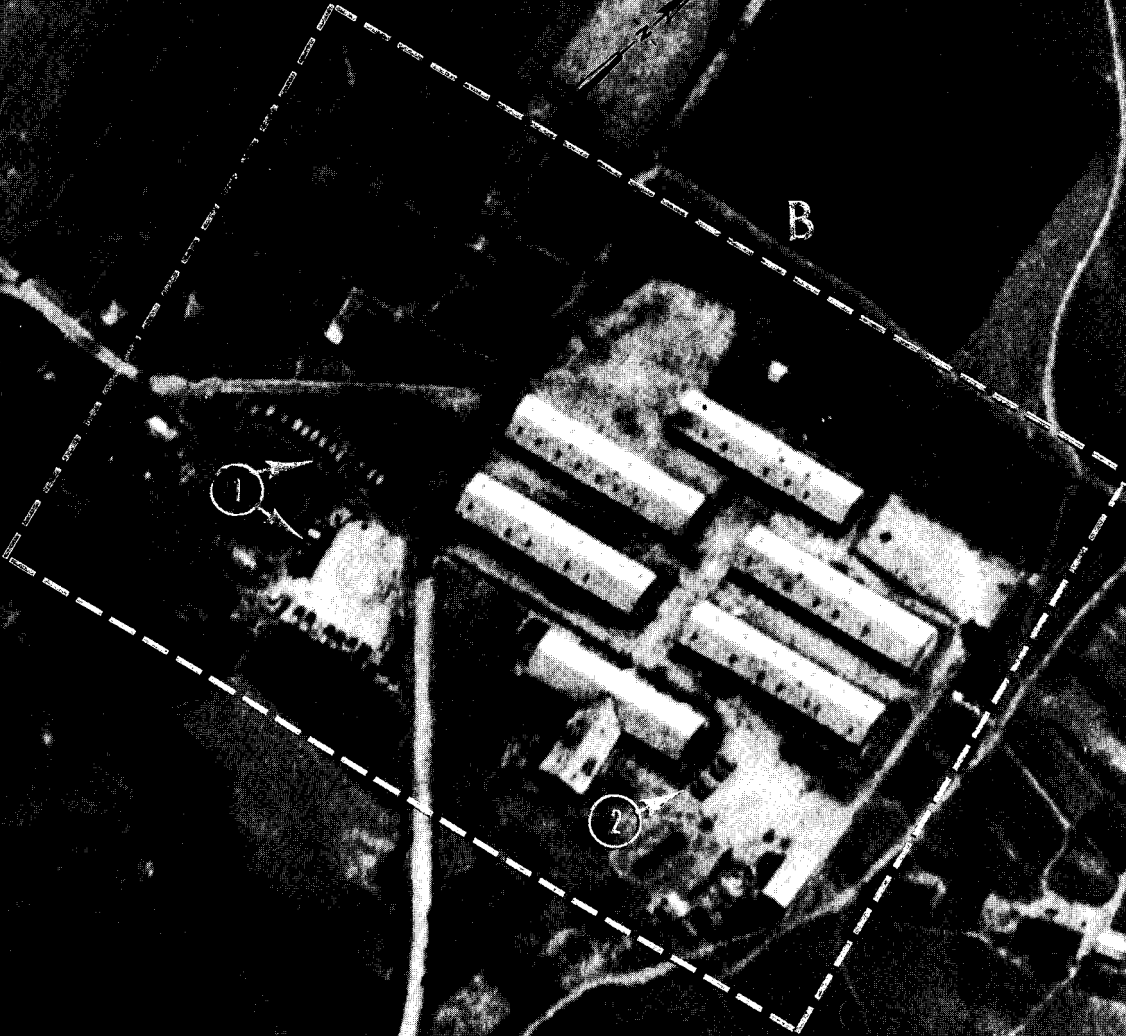


Figure 5

2003/05/14 : CIA-RDP78T05161A00140010006

TOP SECRET



25X1  
25X1

TOP SECRET

CHI-LIN ARMY BARRACKS AREA NNW

5X1



Figure 6

TOP SECRET

25X1

5X1

5X1

5X1

TOP SECRET

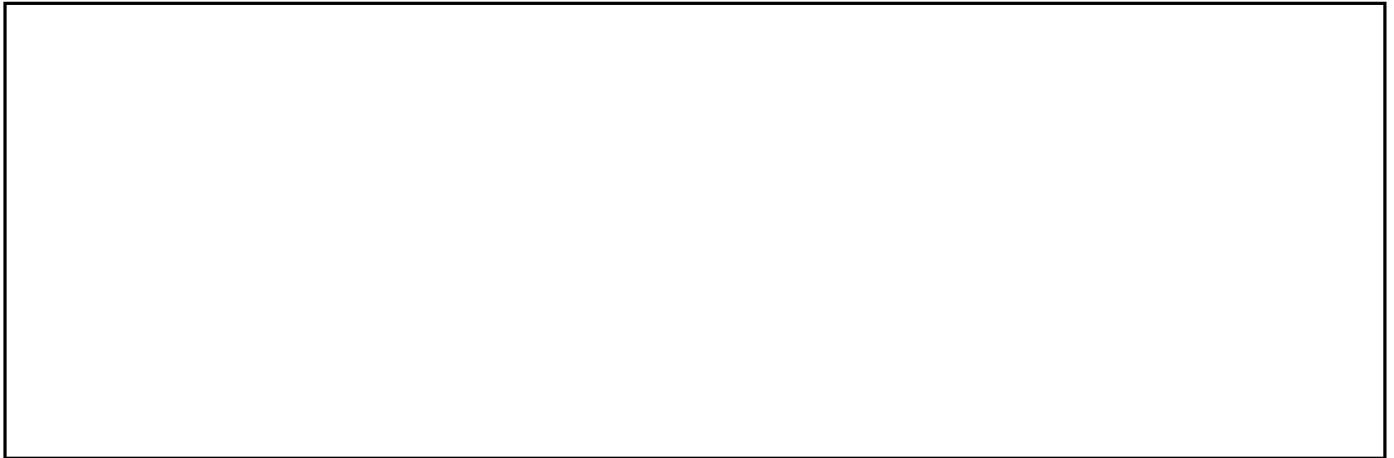
25X1

CIA/PIR-77027

CIA IMAGERY ANALYSIS DIVISION

REFERENCES

25X1



MAPS OR CHARTS

USAF ONC F-9 2nd Edition, January 1963 (CONFIDENTIAL)

DOCUMENTS

DIA Order of Battle, Chinese Communist Army, AP-1-220-1-2-66 INT.  
1 April 1966 (SECRET)

REQUIREMENT

C-RR6-83,700

CIA/IAD PROJECT

31349-7

25X1

TOP SECRET

**TOP SECRET**



**TOP SECRET**