

TOP SECRET



IMAGERY
ANALYSIS
DIVISION

PIR

PHOTOGRAPHIC INTELLIGENCE REPORT

~~VITAL INFORMATION~~

STATUS OF ALUMINUM PLANTS
IN COMMUNIST CHINA [REDACTED]

25X1

Declass Review by NIMA/DOD

[REDACTED]

25X1

CIA/PIR 75069

[REDACTED]

25X1

DATE DEC. 1966

COPY 101

PAGES 8

GROUP 1
Excluded from automatic
downgrading and declassification

TOP SECRET

25X1

Approved For Release 2003/03/04 : CIA-RDP78T05161A001200010051-0

Approved For Release 2003/03/04 : CIA-RDP78T05161A001200010051-0

Approved For Release 2003/03/04 : CIA-RDP78T05161A001200010051-0

RECORD COPY	COPY NO.	PUB. DATE	LOCATION	MASTER	DATE RECEIVED	LOCATION											
DISPOSITION DATE (S)				STOCK	MINIMUM	MAXIMUM											
CUT TO COPIES	0	DATE	1-73	CUT TO COPIES	DATE	COPIES DESTROYED											
CUT TO COPIES		DATE		CUT TO COPIES	DATE												
CUT TO COPIES		DATE		MASTER	DATE												
DATE			RECEIVED OR ISSUED			NUMBER OF COPIES			DATE			RECEIVED OR ISSUED			NUMBER OF COPIES		
NO.	DAY	YR.	REC'D	ISS'D	BAL	MO.	DAY	YR.	REC'D	ISS'D	BAL	REC'D	ISS'D	BAL			
1	9	67			10												
8	13	68			3												
12	9	68			2												
8	9	72			0												
			Dist. Unit #39-48														
			NPIC # 103-105														
			Dist # 39-40														
			Dist # 41-48, 103-105			0 WK 6											

Approved For Release 2003/03/04 : CIA-RDP78T05161A001200010051-0

25X

CIA IMAGERY ANALYSIS DIVISION

25X1

STATUS OF ALUMINUM PLANTS
IN COMMUNIST CHINA

25X

An analysis was made of seven selected aluminum plants in Communist China to detect evidence of new construction or changes in the level of activity.

25X1

Six of these plants have undergone no change in facilities or operational status. The following is a brief description of these six plants:

The Cheng-chou Aluminum Plant, located at 34 45N - 113 35E, has two completed, but not operating pot rooms. The construction status on the third and fourth pot rooms remains much the same on coverage as it was on coverage. The lack of activity on the coverage indicates that the plant is not operating.

25X1

25X

25X1

The Fu-shun Aluminum Plant, located at 41 52N - 123 49E, has eight pot rooms that were all operating on coverage. The facilities at the plant remain the same on coverage as they were on coverage.

25X1

25X

25X1

25X

25X1

The Ho-fei Aluminum Plant, located at 31 57N - 117 17E, has one completed pot room and a foundation for a second. Imagery of revealed the construction status of the second pot room unchanged since imagery of. The lack of activity and fumes in the area of the completed pot room indicates that it is not operating.

25X1

25X

25X1

The Lan-chi Aluminum Plant, located at 29 14N - 119 26E, has one completed pot room. A second pot room was previously thought to be under construction at this plant, but upon further study this activity was identified as the initial construction for a casting shed and a support building. The level of construction is unchanged from imagery to imagery. The lack of fumes on coverage indicates the plant's one pot room is not in operation.

25X1

25X

25X1

25X

~~TOP SECRET~~

25X1

25X1

CIA IMAGERY ANALYSIS DIVISION

25X1

The Lan-chou Aluminum Plant, located at 36 08N - 103 36E, has two completed pot rooms. The plant, as imaged on [redacted] coverage, appears inactive as no smoke is being emitted from the stack serving the pot rooms.

25X1

The Pao-to'u Aluminum Plant, located at 40 34N .. 110 09E, has two completed pot rooms both of which were in operation on [redacted] coverage. The facilities remain unchanged from [redacted]

25X1

25X1

The seventh selected Chinese aluminum plant, Kuei-yang Aluminum Plant, is located at 26 39N - 106 40E (see Figure 1). This plant has undergone considerable expansion since [redacted]. The two pot rooms that were in the early stages of construction at that time were observed as nearing completion on [redacted] coverage (see Figure 4). A casting shed, a transformer yard, a steam plant, four alumina silos, an administration building, and several storage and support buildings have also been constructed during this time interval. An administration building and three support buildings remain under construction.

25X1

The Kuei-yang Aluminum Plant is a part of a complex which contains an alumina plant and an aluminum fabrication facility (see Figure 2). The alumina plant was in the mid-stages of construction on [redacted] coverage (see Figure 3).

25X1

The identifiable features of this plant have been annotated on Figure 3. The aluminum fabrication facility consists of two completed rolling mills, one rolling mill in the early stages of construction, two storage buildings, and several support buildings (see Figure 5). The facilities in this area were not in operation on [redacted] coverage.

25X1

~~TOP SECRET~~

25X1

25X5

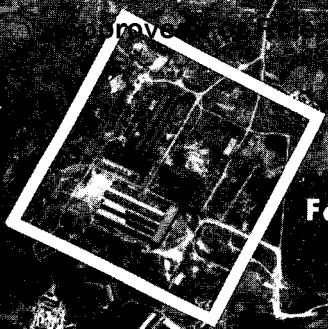
Approved For Release 2003/03/04 : CIA-RDP78T05161A001200010051-0

Approved For Release 2003/03/04 : CIA-RDP78T05161A001200010051-0

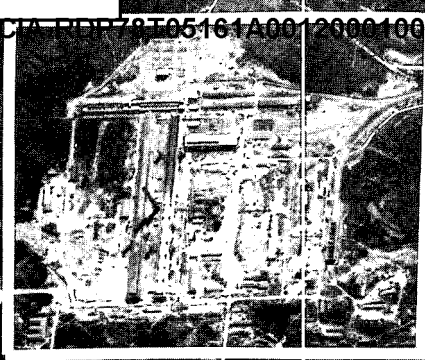
TOP SECRET

25X
25X

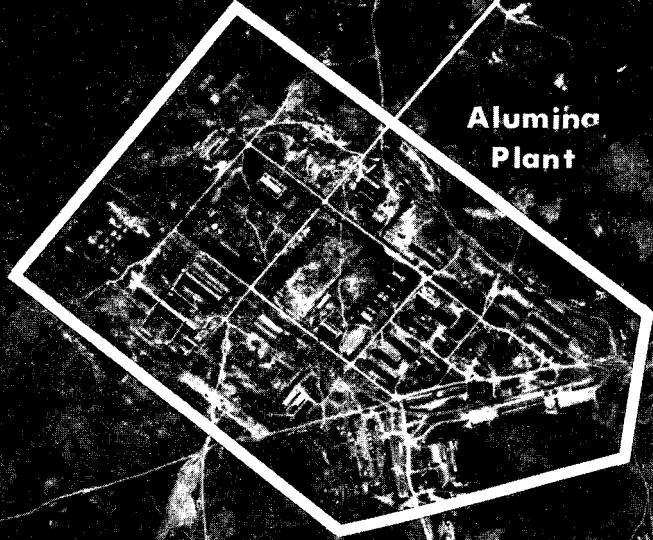
PIR 75069
FIGURE 2



Fabrication Facility



Aluminum Plant



Alumina Plant

KUEI-YANG ALUMINUM COMPLEX
KUEI-YANG, CHINA
26 41N - 106 40E

25X

A001200010051-0

TOP SECRET

25X

TOP SECRET

25X1

PIR 75069

FIGURE 3



KEY TO ANNOTATIONS

1. ORE UNLOADING
2. CRUSHING AND SCREENING BUILDINGS
3. LIME KILNS (2)
4. ORE STORAGE
5. DRYING KILNS (U/C)
6. ORE STORAGE
7. AUTOCLAVE BUILDING
8. THICKENER TANKS
9. PROBABLE FILTER BUILDING
10. PRECIPITATORS (U/C)
11. THERMAL POWER PLANT (U/C)
12. SETTLING TANKS (3) (U/C)
13. CALCINING KILNS (U/C)
14. ALUMINA STORAGE AND SILOS

KUEI-YANG ALUMINA PLANT
KUEI-YANG, CHINA
26 41N - 106 38E

25X1

Approved For Release 2003/08/07 : CIA-RDP78T05105A001200010051-0

TOP SECRET

TOP SECRET

PIR 750695X1
FIGURE 4

KEY TO ANNOTATIONS

1. Pot rooms (2)
2. Rectifier building
3. Transformer yard
4. Switch house
5. Casting shed
6. Steam plant
7. Warehouses (2)
8. Alumina silos (4)
9. Spray pond
10. Administration building (U/C)

Approved For Release

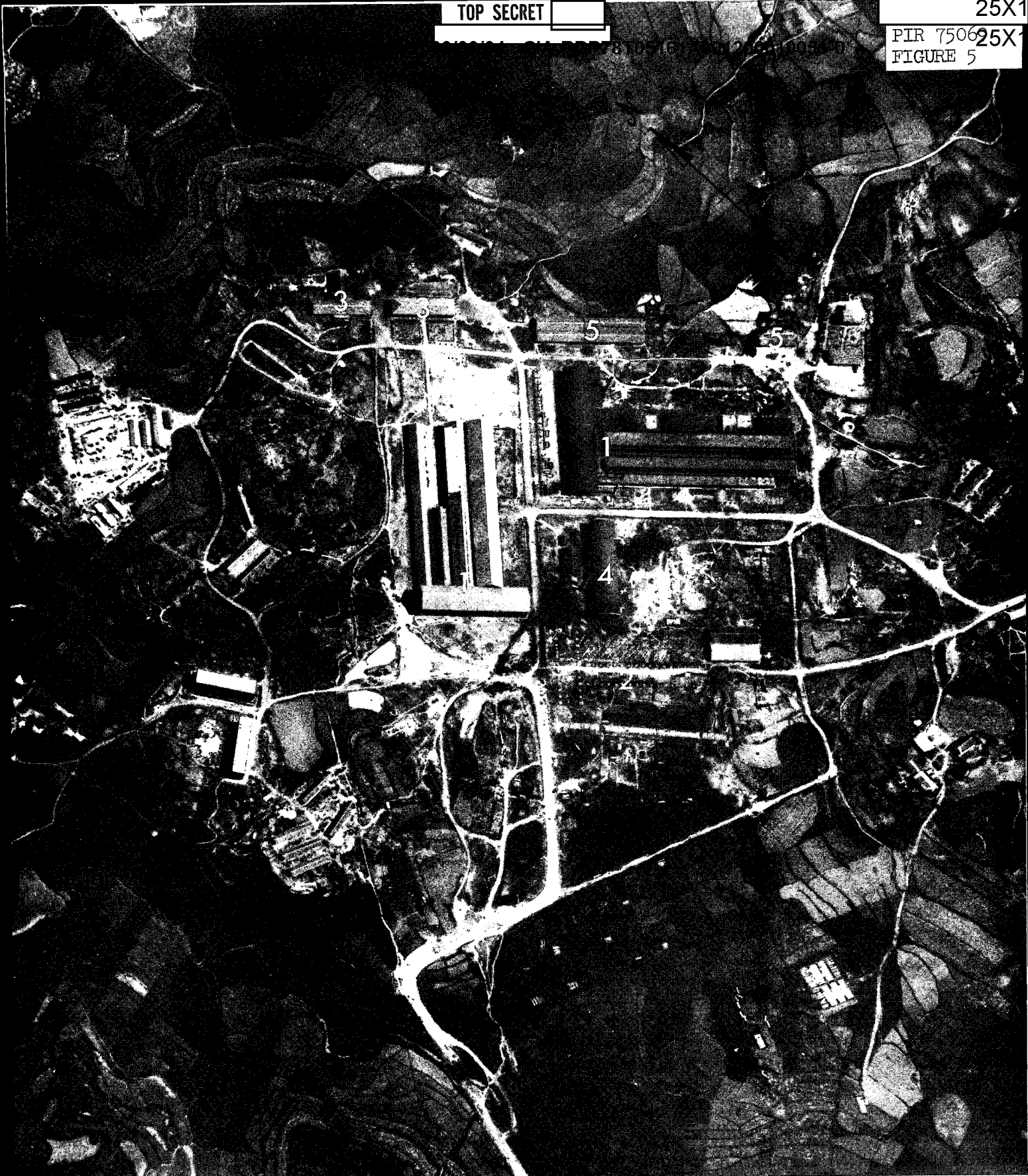
KUEI-YANG ALUMINUM PLANT
KUEI-YANG, CHINA
26 41N - 106 40E

25X

61A001200010051-0

TOP SECRET

25X
25X

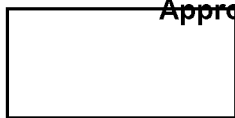


KEY TO ANNOTATIONS

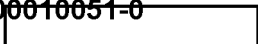
- 1. Rolling mills (2)
- 2. Rolling mill (U/C)
- 3. Administration buildings (2)
- 4. Possible fabrication building
- 5. Storage buildings (2)

KUEI-YANG FABRICATION FACILITY
 KUEI-YANG, CHINA
 26 41N - 106 40E

Approved For Release 2003/08/07 : CIA-RDP80-05151A001200010051-0



TOP SECRET



PIR - 75069

25X1

25X1

CIA IMAGERY ANALYSIS DIVISION

25X1

REFERENCES

25X1



MAPS AND CHARTS

(Kuei-yang) U.S. Air Target Chart, Series 200, Sheet 0496-10HL,
Scale 1:200,000, 2nd Edition, 15th RTS, October 1965 (SECRET)

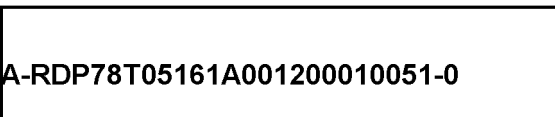
REQUIREMENT

C-RR6-84,000

CIA/IAD PROJECT

30375-7

TOP SECRET



25X1

TOP SECRET

TOP SECRET