

TOP SECRET



IMAGERY
ANALYSIS
DIVISION

PIR

PHOTOGRAPHIC INTELLIGENCE REPORT

[REDACTED]
HAIPHONG CEMENT PLANT

NORTH VIETNAM

Declass Review by NIMA/DOD

[REDACTED]

25X1

25X1

CIA/PIR 75064

DATE DEC. 1966

COPY 101

PAGES 7

GROUP 1
Excluded from automatic
downgrading and declassification

TOP SECRET

25X1

Approved For Release 2003/03/04 : CIA-RDP78T05161A001200010047-5

Approved For Release 2003/03/04 : CIA-RDP78T05161A001200010047-5

Approved For Release 2003/03/04 : CIA-RDP78T05161A001200010047-5

RECORD COPY	COPY NO.	PUB. DATE	LOCATION	MASTER	DATE RECEIVED	LOCATION											
DISPOSITION DATE (S)				STOCK	MINIMUM	MAXIMUM											
CUT TO COPIES	0	DATE 1-73	CUT TO COPIES	DATE	COPIES DESTROYED												
CUT TO COPIES		DATE	CUT TO COPIES	DATE													
CUT TO COPIES		DATE	MASTER	DATE													
DATE			RECEIVED OR ISSUED			NUMBER OF COPIES			DATE			RECEIVED OR ISSUED			NUMBER OF COPIES		
MO.	DAY	YR.	REC'D	ISS'D	BAL	MO.	DAY	YR.	REC'D	ISS'D	BAL	MO.	DAY	YR.	REC'D	ISS'D	BAL
1	5	66			10						10						
8	13	68		4							14						
8	10	72															
						D W K 6											

Approved For Release 2003/03/04 : CIA-RDP78T05161A001200010047-5

TOP SECRET

25X1

CIA IMAGERY ANALYSIS DIVISION

PIR 75064

25X1

25X1

HAIPHONG CEMENT PLANT
NORTH VIETNAM

The Haiphong Cement Plant is located in the northwest section of Haiphong, North Vietnam at coordinates 20 51 44N - 106 40 18E. A few housing units border the plant on the east and south sides (see Figure 4). The plant is served by a spur from the Hanoi - Haiphong Rail Line, connected by road to the urban streets of Haiphong, and served by the waters of the Haiphong harbor.

25X1

This cement plant covers approximately 39 acres and uses both the wet and dry process for the production of cement. The plant has seven rotary kilns, two of which are being used for wet processing of cement. Dimensions of the rotary kilns are as follows: two - 375 by 10 feet (annotation 9, Figure 2), three - 350 by 10 feet (annotation 7, Figure 2), two - [redacted] (annotation 10, Figure 2).

25X1

All kilns were operating on [redacted] coverage; however, on [redacted] coverage only five of seven kilns were operating. It is thought that the two kilns that are not operating, which differ between missions, are possibly being relined with refractory brick, a periodic requirement in their maintenance. Vertical kilns have been reported within the plant area, but none could be identified.

25X1

The initial coverage of the plant in [redacted] revealed only five rotary kilns. The sixth and seventh kilns and their supporting facilities were noted in the mid-stages of construction on [redacted] imagery and observed as completed, but not operating on [redacted] coverage (Figures 1, 2, and 3). All other facilities, including the one quay that serves the plant, have not undergone any change since the initial coverage.

25X1

25X1

25X1

The existing facilities have been identified and are annotated on imagery of [redacted] (See Figure 3). The thermal electric power plant that serves this cement plant and the city of Haiphong is also annotated.

25X1

TOP SECRET

25X1

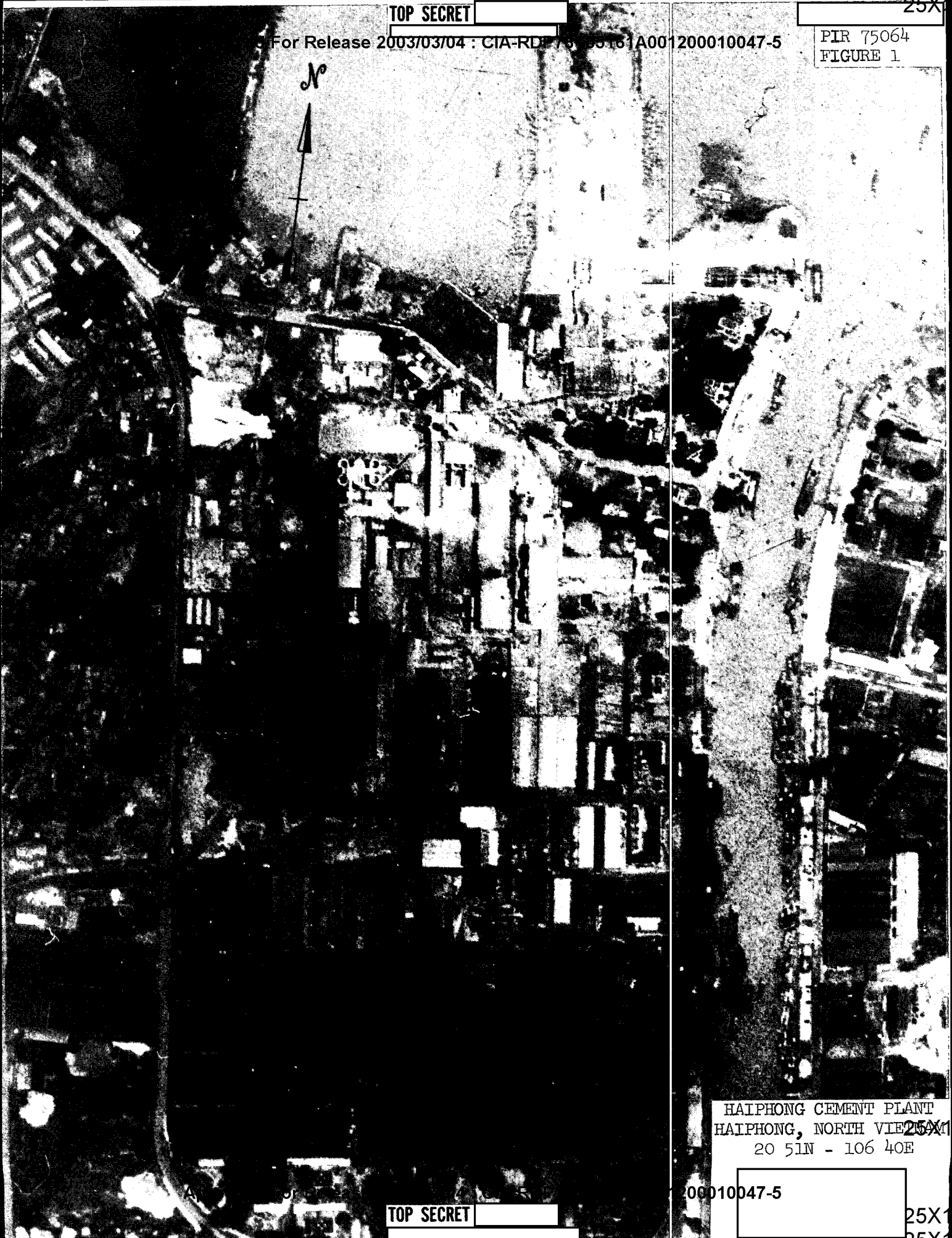
TOP SECRET

25X

For Release 2003/03/04 : CIA-RDP75-05161A001200010047-5

PIR 75064
FIGURE 1

N



HALPHONG CEMENT PLANT
HALPHONG, NORTH VIETNAM
20 51N - 106 40E

00010047-5

TOP SECRET

25X

25X

TOP SECRET

25X

Release 2008/03/04 : CIA-RDP78T00160001200010047-5

PIR 750625X
FIGURE 2



AREA UNDER CONSTRUCTION

HAIPHONG CEMENT PLANT
HAIPHONG, NORTH VIETNAM
20 51N - 106 40E

10047-5

TOP SECRET

25X

[Redacted]

[Redacted]

KEY TO ANNOTATIONS

[Redacted]

PIR 75064

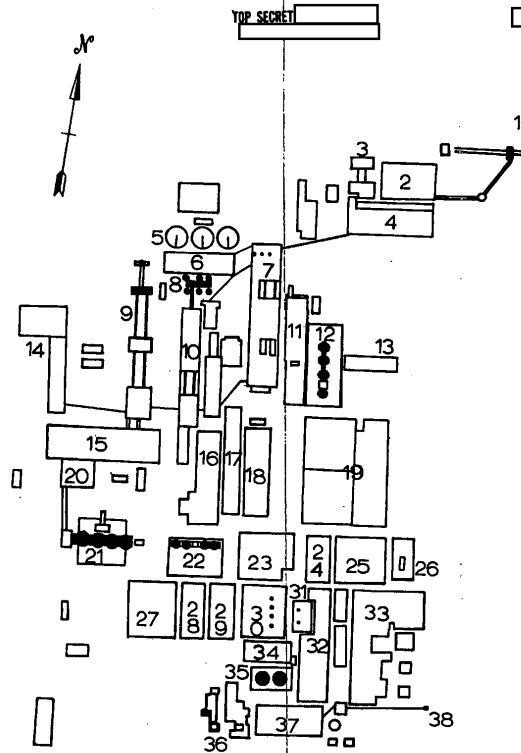
25X1

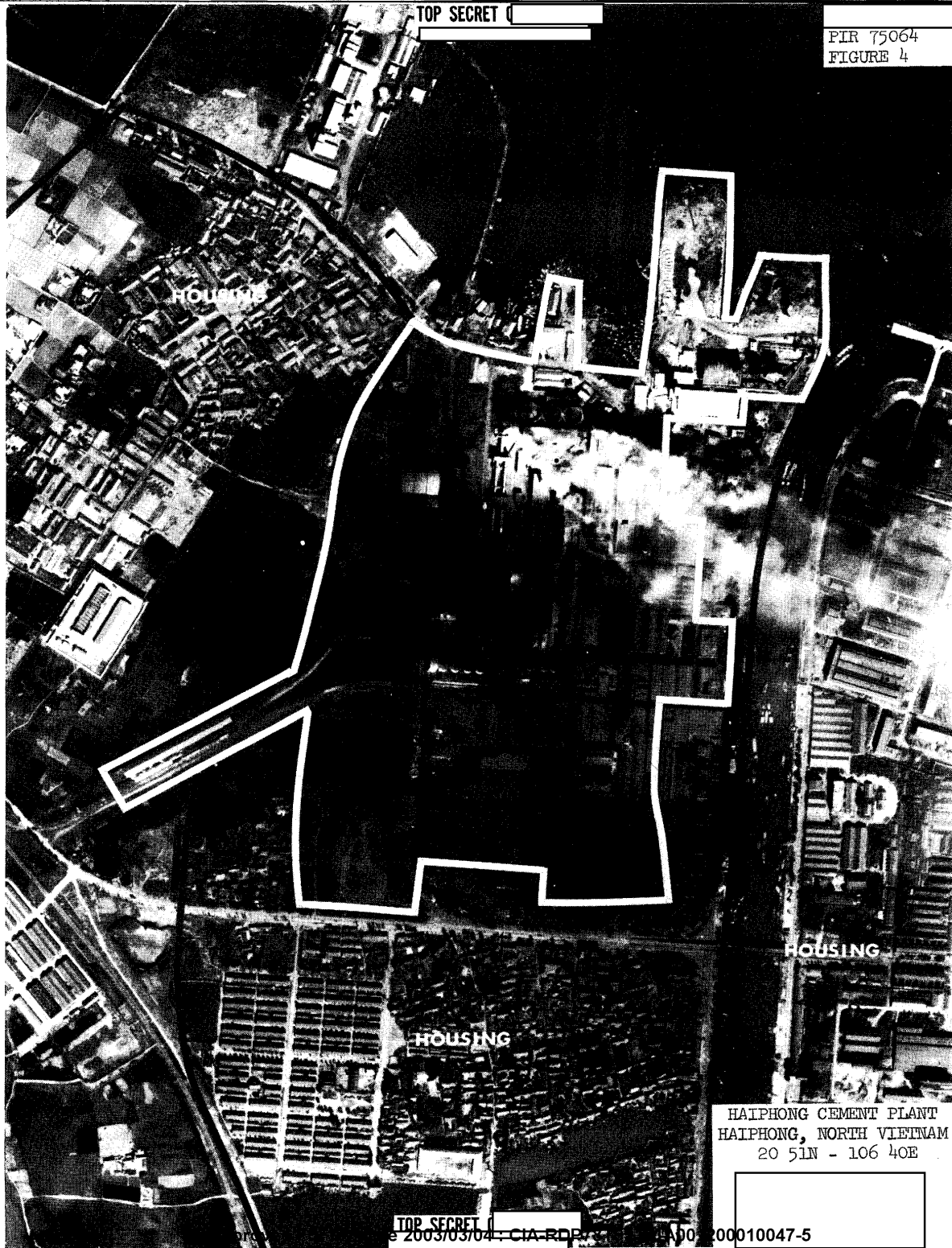
ANNOTATION NO.

DESCRIPTION

- 1 Quay with locomotive crane
- 2 Storage building
- 3 Limestone crushing building
- 4 Clay storage and paste mill
- 5 Mud decanters (3)
- 6 Wet crushing building
- 7 Rotary kilns (3)
- 8 Correction tanks
- 9 Rotary kilns (2)
- 10 Rotary kilns (2)
- 11 Clinker storage building
- 12 Cement silos (4) and packing plant
- 13 Laboratory
- 14 Coal dressing plant
- 15 Clinker storage building
- 16 Clinker storage building and crushing unit
- 17 Warehouse
- 18 Warehouse
- 19 Warehouses
- 20 Cement crushing and grinding building
- 21 Cement silos (4) and packing plant
- 22 Cement silos (4) and packing plant
- 23 Machine shop
- 24 Storage building
- 25 Storage building
- 26 Administration building
- 27 Warehouse
- 28 Warehouse
- 29 Warehouse
- 30 Boilerhouse
- 31 Possible transformer building
- 32 Storage building
- 33 Probable dormitory
- 34 Generator hall
- 35 Cooling towers (2)
- 36 Coal crushing and screening towers (2)
- 37 Coal storage building
- 38 Coal conveyor

[Redacted]





TOP SECRET

PIR 75064
FIGURE 4

HOUSING

HOUSING

HOUSING

HAIPHONG CEMENT PLANT
HAIPHONG, NORTH VIETNAM
20 51N - 106 40E

TOP SECRET

Approved For Release 2003/03/04 : CIA-RDP78T05161A001200010047-5

PIR 75064

TOP SECRET

25X1



25X1

CIA IMAGERY ANALYSIS DIVISION

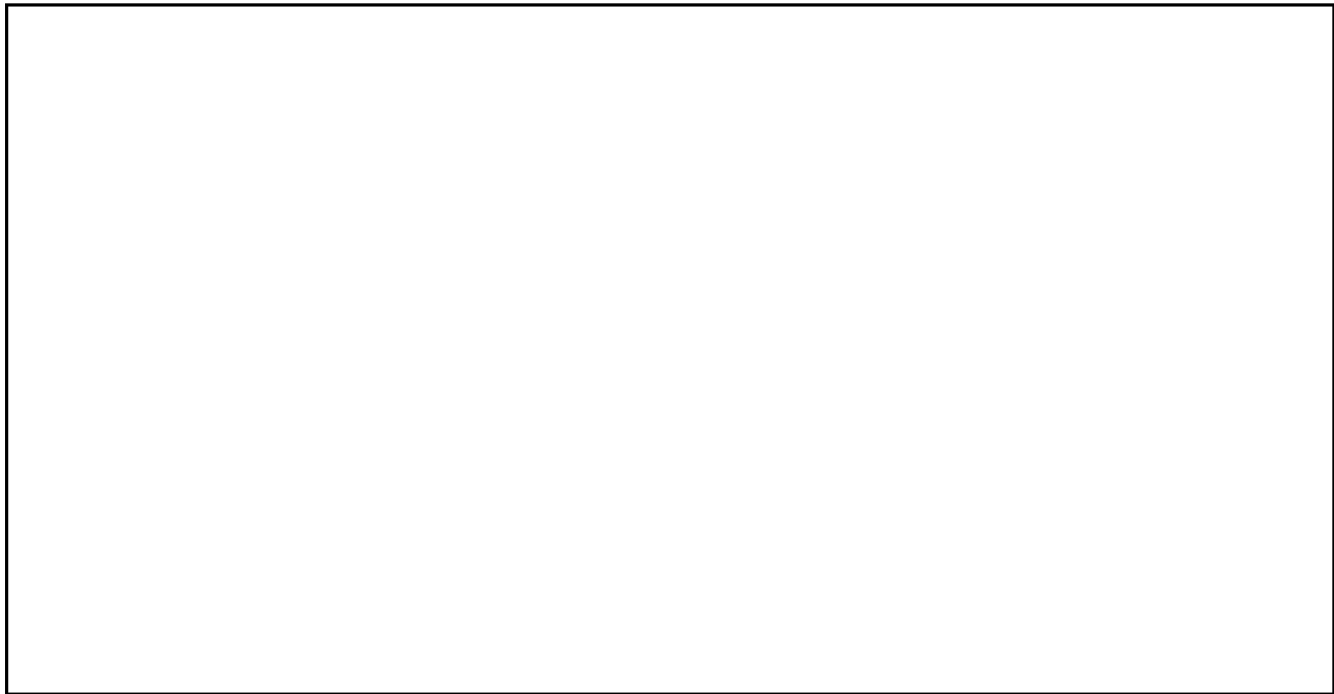


25X1

PIR 75064

REFERENCES

25X1



MAPS AND CHARTS

AMS 50, Series L7014, Sheet 6350IV, 1st Edition, 1965

REQUIREMENT

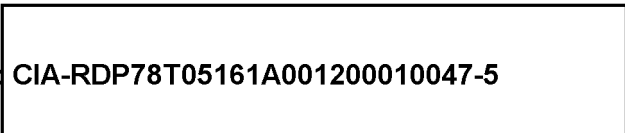
C-RR6-84,050

CIA/IAD PROJECT

30435-7

25X1

TOP SECRET



TOP SECRET

TOP SECRET