

TOP SECRET



IMAGERY
ANALYSIS
DIVISION

PIR

PHOTOGRAPHIC INTELLIGENCE REPORT



BRATSK ALUMINUM PLANT, USSR

Declass Review by NIMA/DOD



25X1

CIA/PIR 75055



25X1

DATE Nov. 1966

COPY 101

PAGES 5

GROUP 1
Excluded from automatic
downgrading and declassification

TOP SECRET

25X1

Approved For Release 2003/03/04 : CIA-RDP78T05161A001200010037-6

Approved For Release 2003/03/04 : CIA-RDP78T05161A001200010037-6

25X1

CIA IMAGERY ANALYSIS DIVISION

BRATSK ALUMINUM PLANT, USSR

25X1

The Bratsk Aluminum Plant is located 13 nautical miles southwest of Bratsk, USSR at coordinates 56 07N - 101 27E. The plant is connected by rail and road with Bratsk and is served by a power line from the Bratsk Hydro Power Plant ([REDACTED]). Bratsk is located on the Trans-Siberian Rail Line.

25X1

This aluminum plant covers approximately 1,920 acres and contains 99 completed buildings and eleven buildings under construction (see figures 1 and 2). Among the buildings that are completed, two pot rooms with their respective rectifier buildings lie in the center of the complex (see annotation 1, Figure 2). The construction on the first of these pot rooms was first identified on [REDACTED] coverage and it was observed as completed and probably operational on [REDACTED] imagery. Coverage of [REDACTED] showed the initial construction of the second pot room, and coverage of [REDACTED] revealed the building as completed. Both of these pot rooms measure [REDACTED] feet.

25X1

25X1

25X1

Excavations for four additional pot rooms were noted on [REDACTED] imagery. The size of these excavations indicate that these pot rooms will be similar to those already erected (see Figures 1 and 2). An area adjacent to two of the pot room excavations has been cleared and appears to be the site for the seventh and eighth pot rooms (see annotation 3, Figure 2). Because of the early construction status of most of the production facilities, it is difficult to ascertain the exact number of pot rooms to be erected. The area between the production and administration facilities may well be a site for the construction of additional production facilities in the future (see annotation 8, Figure 2). It seems illogical to assume that this area be left vacant. The 17 buildings that now occupy the area were identified as housing units on [REDACTED] coverage. Since that time, they have been converted to construction shacks; and they are now in disrepair.

25X1

Other completed facilities include a casting building, alumina silos, a transformer yard, storage buildings, and a support area. The casting building (annotation 4, Figure 2) is connected by a passageway to the two completed pot rooms and has a second passageway under construction on the other side of the building that will connect to the pot rooms which are under construction. The support area (annotation 7, Figure 2), located west of the production facilities, contains two administration buildings, eight multi-story barracks or housing units, and 32 storage and support buildings.

TOP SECRET

PIR - 75055

25X1

25X1

CIA IMAGERY ANALYSIS DIVISION

25X1

25X1

[redacted] photographic missions [redacted] have covered this plant. On the [redacted] imagery, which revealed the first indications of any construction activity, the area for the plant was being cleared and the gradings for the rail line had begun. The construction was observed in various stages on the missions between [redacted]

25X1

25X1

25X1

[redacted] coverage revealed that most of the production facilities, except two pot rooms, were still in the early stages of construction.

All measurements have been made by the NPIC Technical Intelligence Division, and are considered to be accurate within ± 5 feet or $\pm 2\%$, whichever is greater.

TOP SECRET

25X1

TOP SECRET

PIR - 75055

25X1

25X1

CIA IMAGERY ANALYSIS DIVISION

REFERENCES

25X1



MAPS AND CHARTS

ACIC U.S. Air Target Chart, Series 200, Sheet 0127-22HL, Scale
1:200,000, 3rd Edition, July 1965 (SECRET)

REQUIREMENT

C-RR6-83,954

CIA/IAD PROJECT

30311-7

TOP SECRET

25X1

TOP SECRET

25X1

PIR: 75055
FIGURE 1



BRATSK ALUMINUM PLANT
56 07N 101 27E

25X1

TOP SECRET

104

00 26

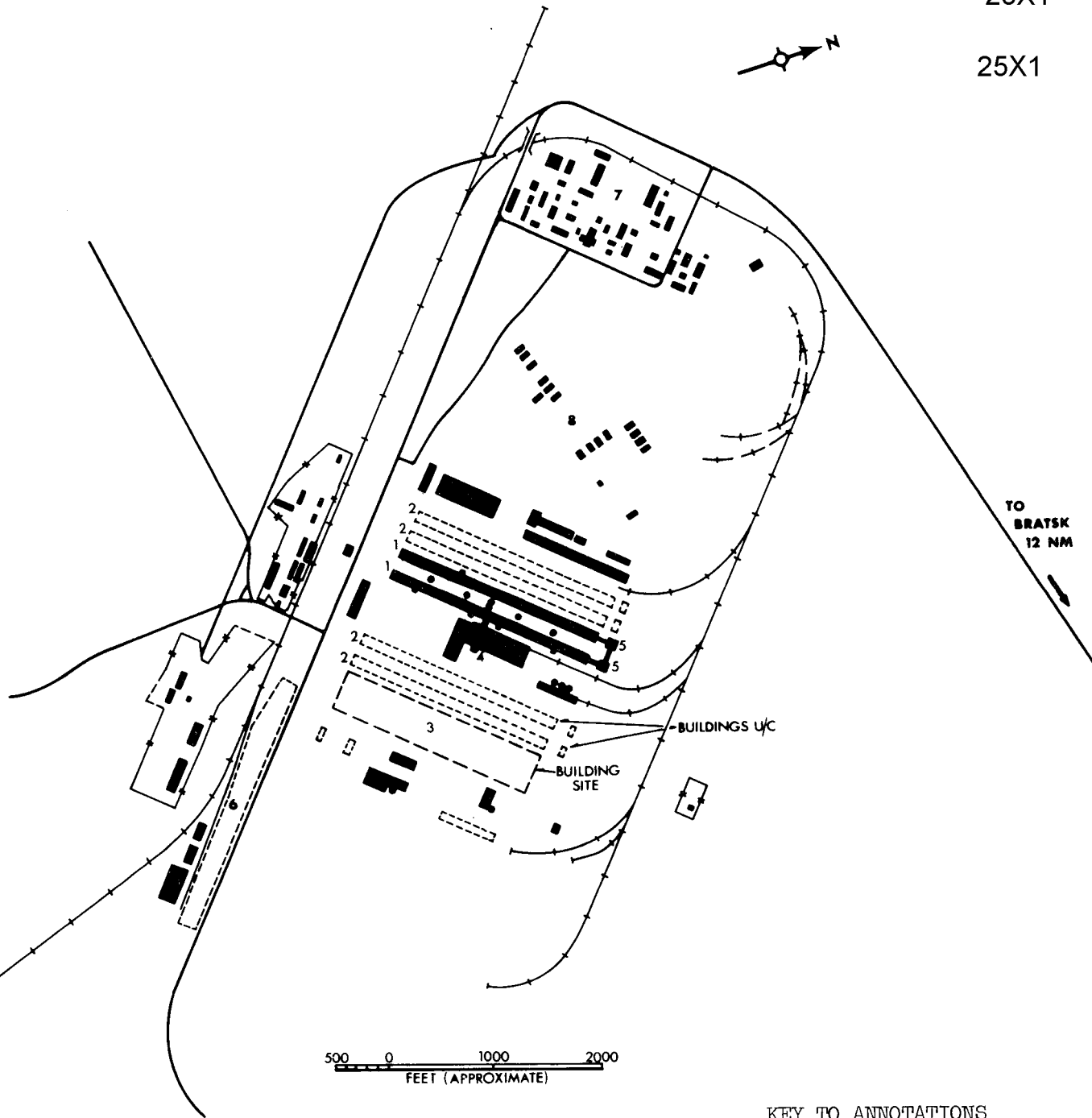
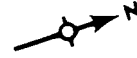
TOP SECRET

PLR 75055
FIGURE 2

25X1

25X1

25X1



TO
BRATSK
12 NM

500 0 1000 2000
FEET (APPROXIMATE)

KEY TO ANNOTATIONS

- 1. POT ROOMS
- 2. POT ROOMS U/C
- 3. SITE FOR TWO POT ROOMS
- 4. CASTING BUILDING
- 5. RECTIFIER BUILDING
- 6. OPEN STORAGE AREA
- 7. SUPPORT AREA
- 8. CONSTRUCTION SHACKS

25X1

25X1

TOP SECRET

TOP SECRET

TOP SECRET