

TOP SECRET



IMAGERY
ANALYSIS
DIVISION

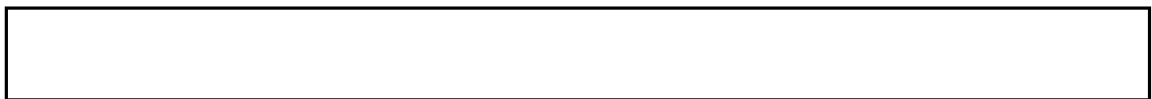
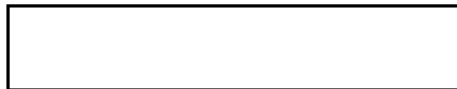
PIR

PHOTOGRAPHIC INTELLIGENCE REPORT

WIKI LEAKS COPY

NOVOSIBIRSK AIRFRAME PLANT CHKALOV NO 153

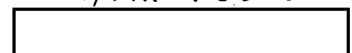
NOVOSIBIRSK, USSR



25X1

Declass Review by NIMA/DOD

CIA/PIR -75048



25X1

DATE NOVEMBER 1966

COPY 100

PAGES 6

GROUP 1
Excluded from automatic
downgrading and declassification

TOP SECRET

25X1

Approved For Release 2003/03/04 : CIA-RDP78T05161A001200010030-3

Approved For Release 2003/03/04 : CIA-RDP78T05161A001200010030-3

25X1

NOVOSIBIRSK AIRFRAME PLANT CHKALOV NO 153, NOVOSIBIRSK, USSR SEPTEMBER 1966

25X1

Novosibirsk Airframe Plant Chkalov No 153 is located at 55-04-00N 082-59-10E in the northeast suburbs of Novosibirsk, USSR (Figure 1). The plant is adjacent to Novosibirsk Airfield Northeast flyaway field for the plant. It is served by major road and rail spurs, and has within its boundaries approximately 22,000 linear feet of railroad and approximately 15,250 linear feet of major roads which average approximately 30 feet in width. The plant is surrounded by approximately 14,000 linear feet of probable wall. Figures 2, 3, and 4 illustrate the development of the plant

is a layout drawing of the plant facilities; item numbers are keyed to Table 1.

Novosibirsk Airframe Plant Chkalov No 153 was observed on photography of Figure 2). At that time the plant contained approximately 2,459,315 square feet of floor-space. The plant floorspace reported in / showed an increase of approximately 693,875 square feet, for a total of approximately 3,153,190 square feet. New mensuration data derived from photography of has established the plant floorspace at approximately square feet and the volume at approximately 116,420,680 cubic feet. It

25X1

25X1

25X1

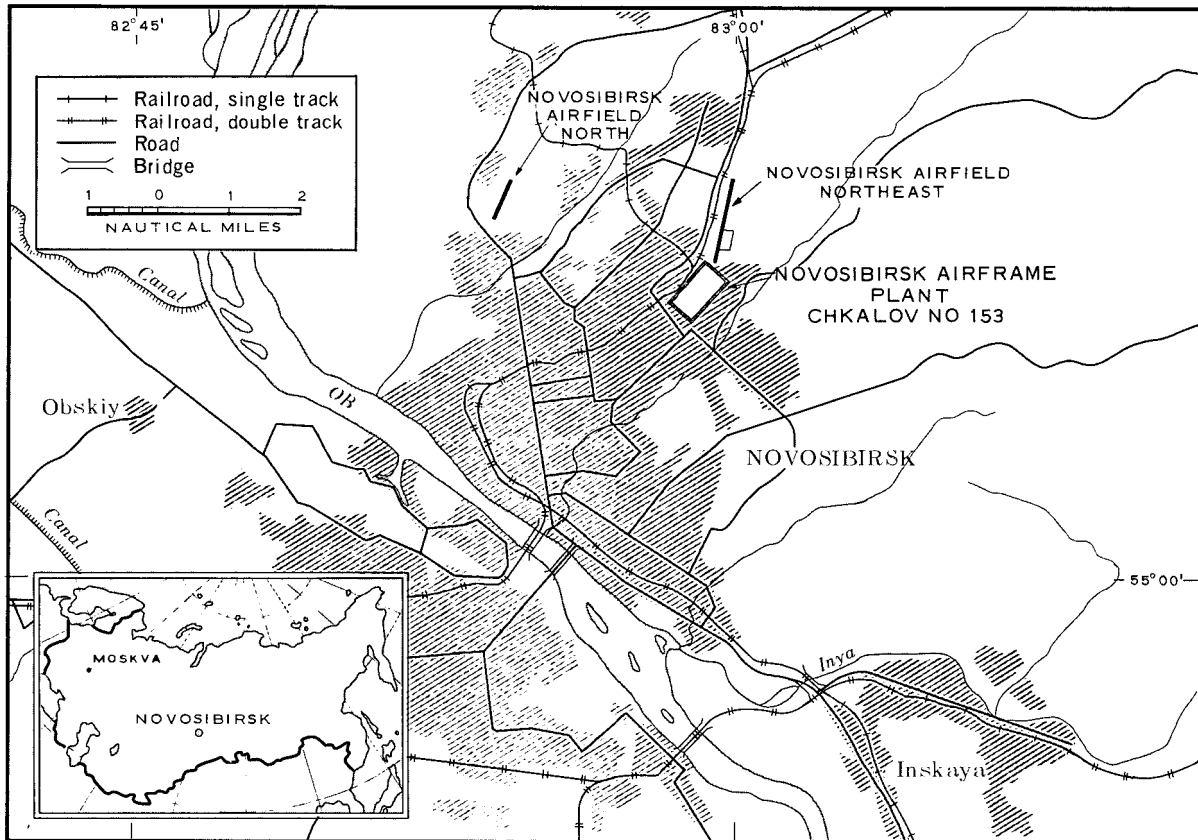


FIGURE 1. LOCATION MAP.

L-5982 (11/66)

25X1

[redacted]

Approved For Release 2003/03/04

TOP SECRET

CIA-RDP78T05161A0012000

10030-3

[redacted]

CIA/PIR-75048

25X1

should be noted that the area to the east of the plant, identified as the Siberian Scientific Institute of Aviation (Figure 5), was included within the plant area for the [redacted] floorspace total, while these buildings are now considered as a part of the institute complex and not directly associated with Plant No 135, 2/ and thus were not included in the [redacted] measurement totals.

25X1

25X1

25X1

New plant additions [redacted] included a final assembly building (item 17), a hangar (item 22), and a workshop (item 1). Some buildings within the plant were expanded during this time period, including a building adjacent to a hangar (item 19), 2 workshops (items 3 and 4), and a warehouse (item 6). The construction of the final assembly building was begun prior to [redacted] and was complete by [redacted]. The expansion of the 2 workshops and the warehouse was in progress during [redacted] and was complete by [redacted].

25X1

25X1

25X1

25X1

25X1

25X1

25X1

A portion of the hangar (item 22) was completed between [redacted] further expansion continued until [redacted] when much of the outside portion appears to have been completed.

Plant expansion between [redacted] was limited to the expansion of the hangar (item 22), the completion of the subassembly/machine

shop (item 5), and the addition of small support buildings. The construction of item 5 was begun before [redacted] some roof cover was completed within [redacted] and the remaining portion prior to [redacted]

25X1

25X1

Novosibirsk Airfield Northwest, which serves the plant as a flyaway field, has 2 serviceable northeast/southwest runways. The shorter runway was extended from approximately 6,600 feet to approximately 8,200 feet by 230 feet between [redacted]

25X1

25X1

25X1

25X1

Construction of the longer runway had begun by [redacted] and was completed prior [redacted] with overall dimensions of approximately 9,500 by 250 feet. The 2 runways are connected by 3 crossovers, and in the southwest area the runways are connected by taxiways and parking aprons extending into the plant area. The taxiways, parking aprons, and crossovers occupy approximately [redacted] of concrete and improved surface. Aircraft observed on [redacted] within the plant and airfield area included 1 BEAGLE, 1 possible FISHPOT, 19 probable FIREBAR, 3 FAGOT/FRESCO, 1 possible CAB, 1 HARE, 1 probable BEAR fuselage, and 1 probable BEAGLE fuselage.

25X1

25X1

25X1

TOP SECRET

25X1

CIA/PIR-75048

25X1

25X1

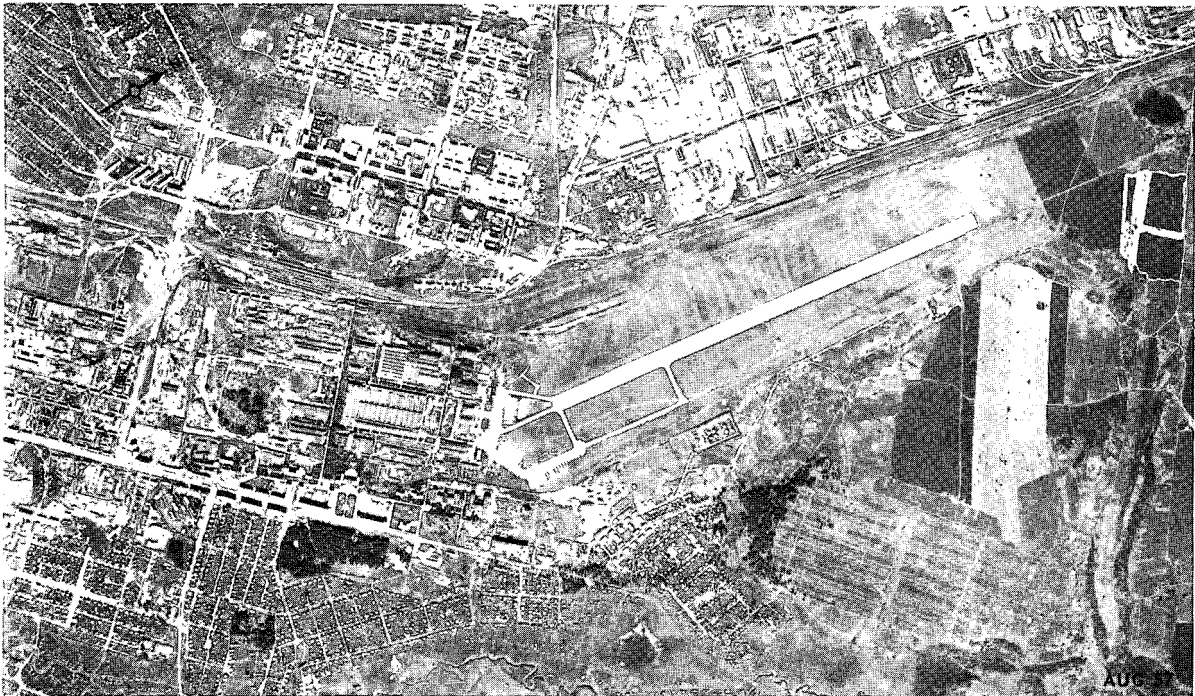


FIGURE 2. NOVOSIBIRSK AIRFRAME PLANT CHKALOV NO 153, NOVOSIBIRSK, USSR,

25X1

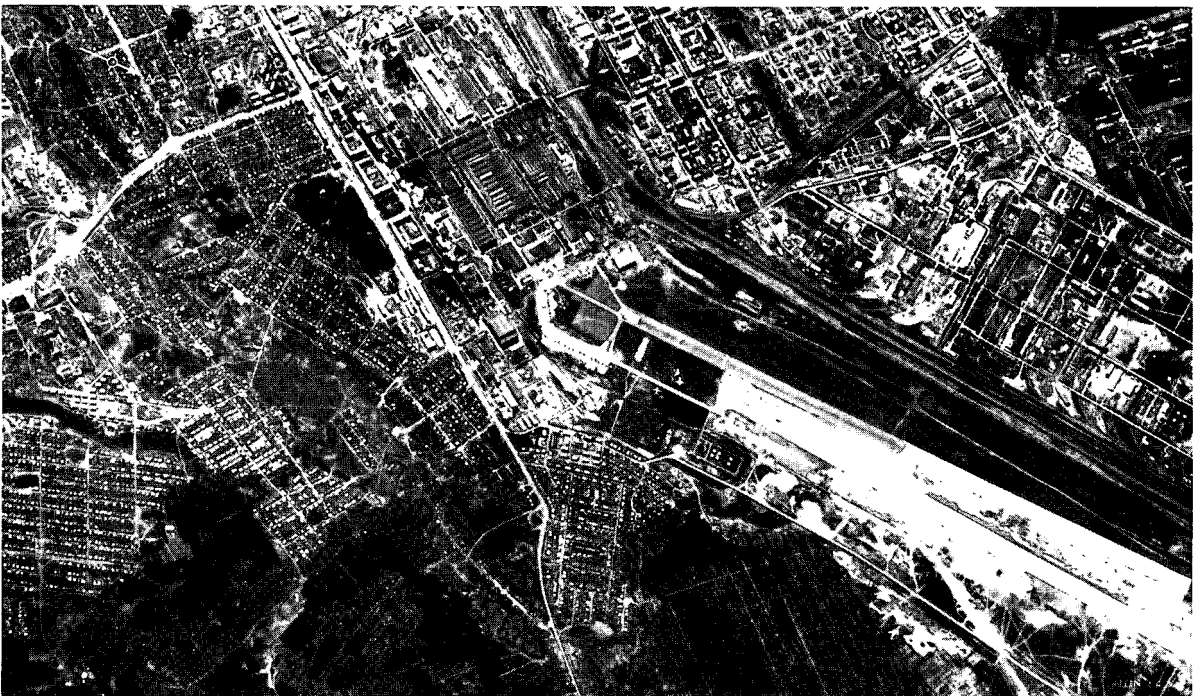


FIGURE 3. NOVOSIBIRSK AIRFRAME PLANT CHKALOV NO 153,

25X1

TOP SECRET

25X1

X1

Approved For Release 2002/02/04

TOP SECRET

CIA-RDP78T05161A001200010030-3

CIA/PIR-75048

25X1

25X1

Table 1. Description of Facilities at Airframe Plant Chkalov No 153 (Items are keyed to Figure 5)

ITEM	DESCRIPTION	DIMENSIONS (ft)	FLOORSPACE	CUBIC FEET
		(see note) L W H	(sq ft)	
1	Workshop	[REDACTED]	14,400	460,800
2	Warehouse/storage bldg		33,000	561,000
3	Workshop/machine shop		138,300	5,435,700
4	Workshop & engine house		114,900	4,118,700
5	Subassembly bldg/machine shop		332,500	16,305,200
6	Prob receiving warehouse		66,000	1,782,000
7	Prob receiving warehouse		68,500	1,986,500
8	Forge/foundry		66,425	1,375,850
9	Workshop		43,325	1,100,600
10	Admin bldgs (2)		8,600	164,280
			8,025	168,525
11	Workshop/machine shop		32,800	1,243,000
12	Subassembly bldg/machine shop		382,925	12,293,875
13	Final assembly/subassembly bldg		711,250	28,743,750
14	Subassembly bldg/machine shop		108,150	2,514,900
15	Admin/engineering bldg		87,600	1,080,400
16	Admin/engineering bldg		93,600	1,239,300
17	Final assembly bldg		164,000	13,113,600
18	Workshop		72,275	2,168,250
19	Hangar		67,650	2,232,450
20	Shipping bldg		72,825	2,051,700
21	Steamplant		18,600	1,116,000
22	Hangar		7,200	4,032,000
23	Engine test facility	13,250	371,000	
Total floorspace & cubic feet of numbered bldgs			2,726,100	105,659,380
Total floorspace & cubic feet of other bldgs			[REDACTED]	10,761,300
Total floorspace & cubic feet of plant			[REDACTED]	116,420,680

25X1

25X1

25X1

25X1

NOTE--With the exception of those heights marked with an asterisk (*), all measurements were calculated by NPIC/TID; these measurements are accurate to within ± 5 ft. Measurements were derived from [REDACTED]

*Height calculated by CIA/IAD project analyst.

X1

25X1

25X1

TOP SECRET

CIA/PIR-75048

25X1

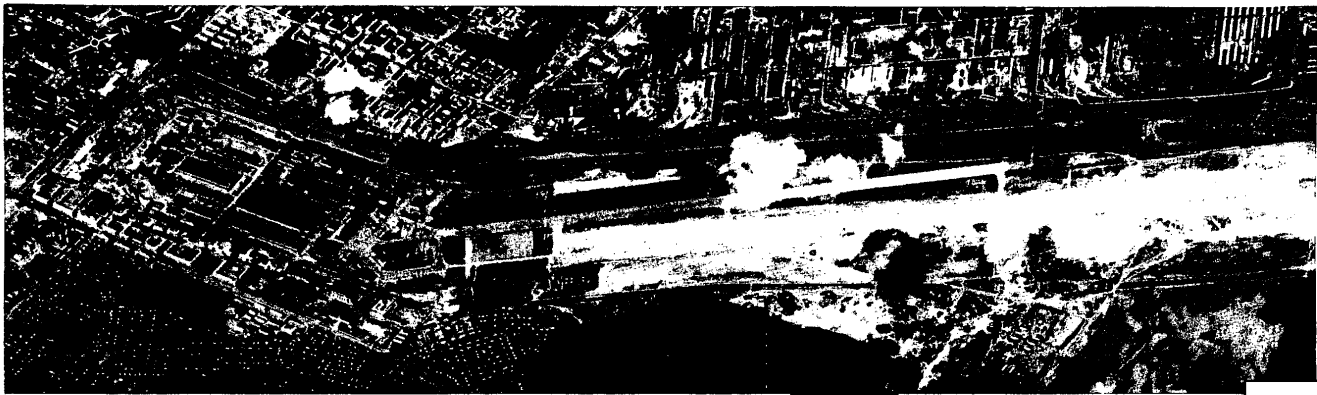


FIGURE 4. NOVOSIBIRSK AIRFRAME PLANT CHKALOV NO 153

25X1

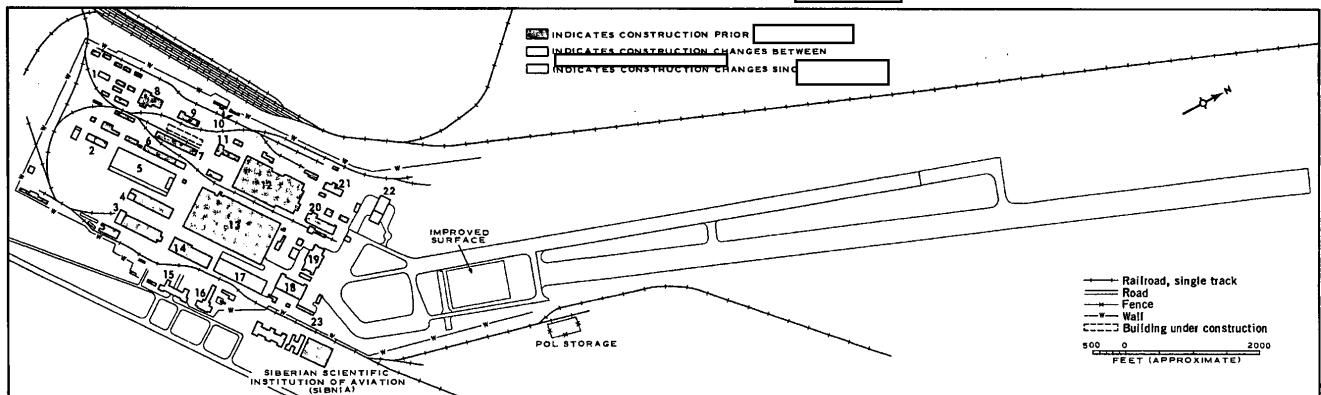


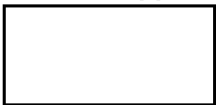
FIGURE 5. LAYOUT OF NOVOSIBIRSK AIRFRAME PLANT CHKALOV NO 153.

25X1
25X1

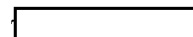
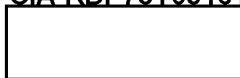
TOP SECRET

25X1

25X1



TOP SECRET



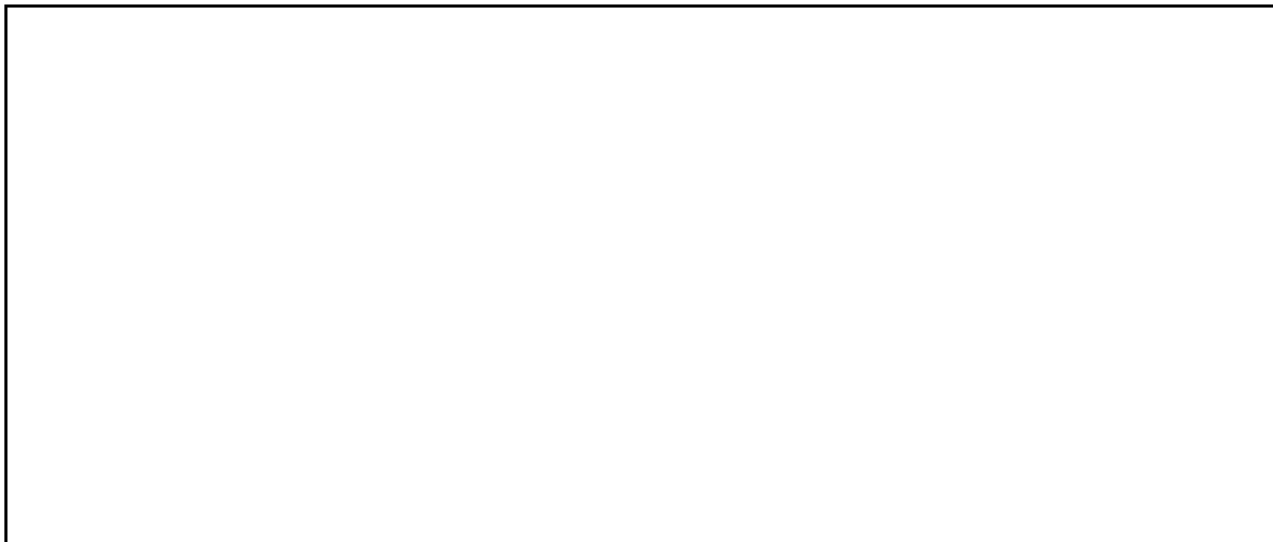
CIA/PIR-75048

25X1

25X1

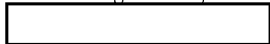
25X1

REFERENCES



MAPS OR CHARTS

ACIC. US Air Target Chart, Series 200, Sheet M0162-10A, 1st ed, Jun 59, scale 1:200,000 (SECRET)



25X1

25X1

DOCUMENTS

1. CIA. PIR-22/64, [redacted] *Novosibirsk Airframe Plant Chkalov No 153, Novosibirsk, USSR, Aug 64* (TOP SECRET)

2. CIA. PIR-65045, [redacted] *Siberian Scientific Institute of Aviation (SIBNIA), Novosibirsk, USSR, Oct 65* (TOP SECRET)

25X1

25X1

25X1

25X1

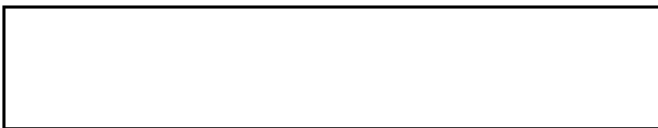
REQUIREMENT

CIA. C-RR6-83,650

PROJECT

31260/66 (partial answer)

TOP SECRET



25X1

TOP SECRET

TOP SECRET