

TOP SECRET



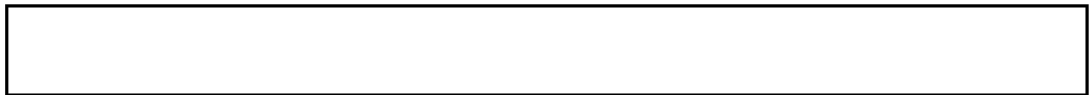
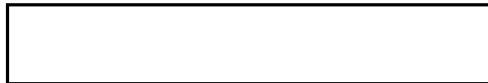
I
MAGERY
A
NALYSIS
D
IVISION

PIR

PHOTOGRAPHIC INTELLIGENCE REPORT

VITAL RECORDS COPY

AIRCRAFT HIGHLIGHTS



25X1

Declass Review by NIMA/DOD

CIA/PIR75044



25X1

DATE October 1966

COPY 101

PAGES 6

GROUP 1
Excluded from automatic
downgrading and declassification

TOP SECRET

25X1

Approved For Release 2003/03/04 : CIA-RDP78T05161A001200010026-8

Approved For Release 2003/03/04 : CIA-RDP78T05161A001200010026-8

RECORD COPY	COPY NO.	PUB. DATE	LOCATION	MASTER	DATE RECEIVED	LOCATION		
Approved For Release 2003/03/04 : CIA-RDP78T05161A001200010026-8						STOCK MINIMUM 1 MAXIMUM 10		
CUT TO COPIES	0	DATE	1-73	CUT TO COPIES	DATE	COPIES DESTROYED		
CUT TO COPIES		DATE		CUT TO COPIES	DATE			
CUT TO COPIES		DATE		MASTER	DATE			
DATE			RECEIVED OR ISSUED			NUMBER OF COPIES		
MO.	DAY	YR.	REC'D	ISS'D	BAL	MO.	DAY	YR.
11	2	66			10			
8	12	68		5	15			
8	9	72						
			Dist. Unit #39-48					
			NPIC # 4, 49, 103-105					
			Dist # 39-49, 4, 103-105			O W K G		

CIA IMAGERY ANALYSIS DIVISION

PIR 75044

25X1

AIRCRAFT HIGHLIGHTS

This report presents interpretation and accompanying photography showing significant changes at Sino/Soviet aircraft production facilities from [redacted] Significant changes in facilities or aircraft observed were noted at two plants.

25X1

KAZAN AIRFRAME PLANT B-387
FIGURE 1

Construction is underway on two large unidentified buildings and also a new landing pad and a number of new taxiways and hardstands. The large circular landing pad is now complete. Five HOUND crates and two HOUND are present in the shipping area (Figures 2 and 3). The lower illustration on Figure 3 shows a closeup of HOUND crates on board ship.

KHARKOV AIRCRAFT ASSEMBLY PLANT 135
FIGURE 4

A significant amount of new construction has taken place since the last coverage [redacted]. A small workshop and an engineering/administration building have been built in the main plant area. At the flyaway field, a large repair and modification facility is under construction. New facilities in this area presently include a hangar/workshop, one taxiway and one large parking apron, a smaller hangar, two large workshops under construction, and a steam plant to serve this repair facility.

Completion of this area will give this plant a significant repair and modification area, equal to or larger in size than those at Kazan Airframe Plant Gorbunov 22 and Kuybyshev Airframe Plant Lenin 18.

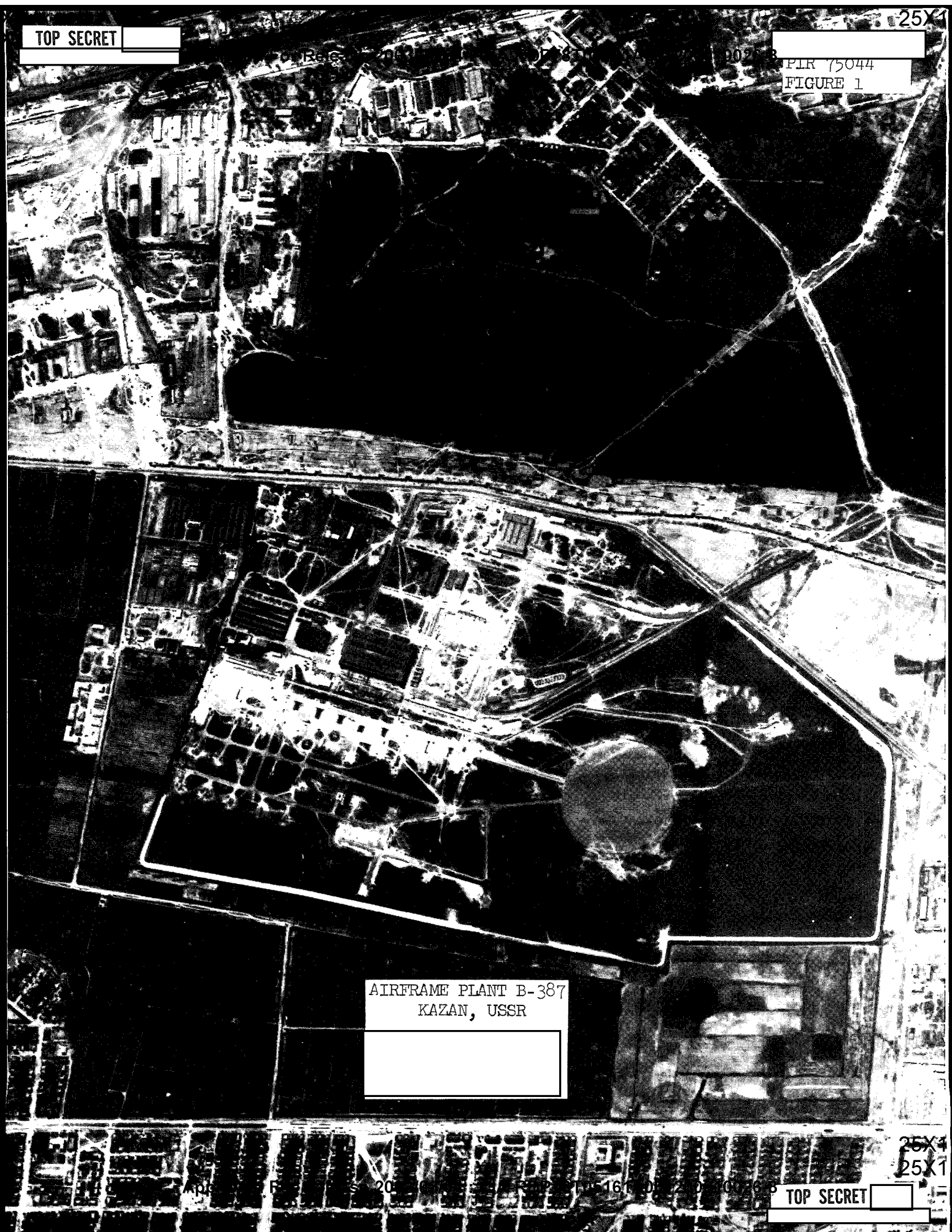
25X1

TOP SECRET

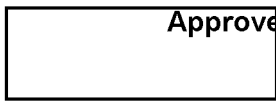
PIR 75044
FIGURE 1

AIRFRAME PLANT B-387
KAZAN, USSR

TOP SECRET



5X1



TOP SECRET



25X1

CIA IMAGERY ANALYSIS DIVISION



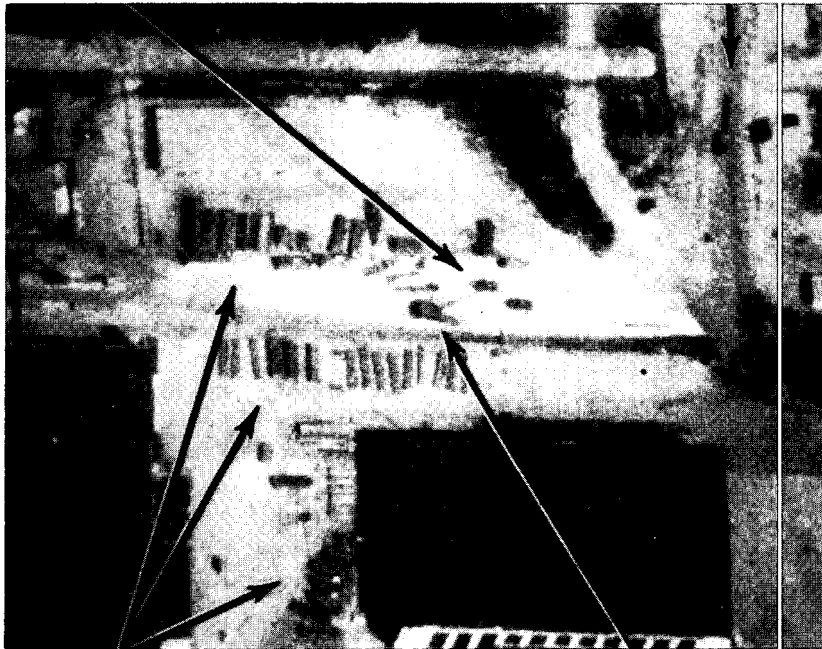
25X1

PIR 75044
FIGURE 2

SHIPPING AREA
KAZAN AIRFRAME PLANT B-387

TWO HOUND
WITHOUT ROTORS
BEING DISASSEMBLED
FOR SHIPPING

ONE HOUND
WITHOUT ROTORS
APPROACHING
SHIPPING AREA



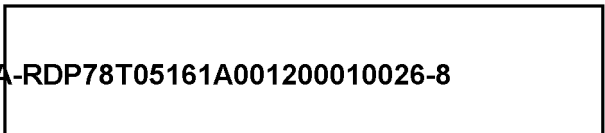
5X1

HOUND
FUSELAGE
AND PARTS
CRATES



TRUCK
CRANE

TOP SECRET



25X1

K1

~~TOP SECRET~~

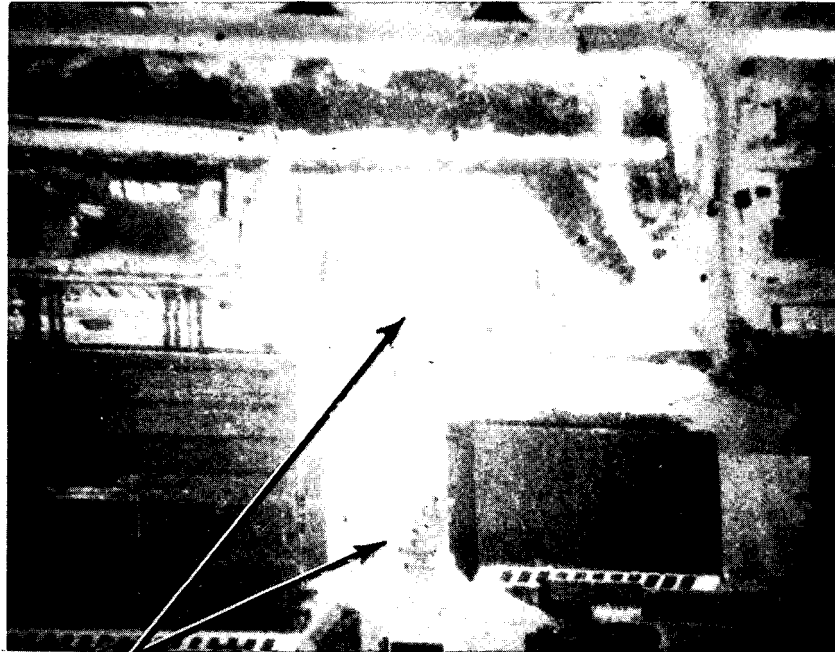
25X1

CIA IMAGERY ANALYSIS DIVISION

PIR 75044
FIGURE 3

25X1

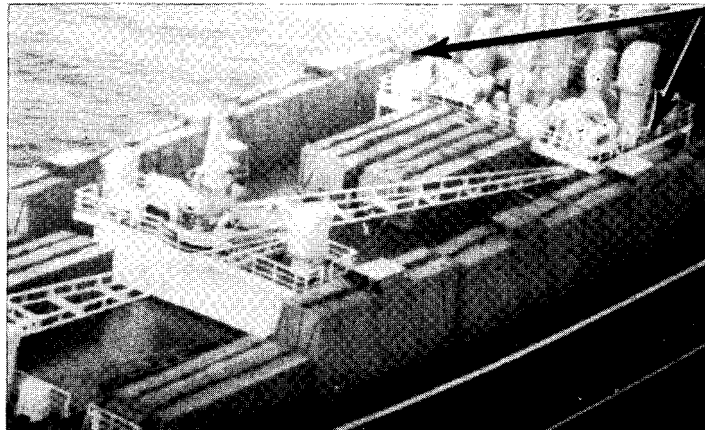
SHIPPING AREA
KAZAN AIRFRAME PLANT B-387



K1

HOUD
FUSELAGE
CRATES

HOUD
FUSELAGE
CRATES



SMALL SCALE PHOTOGRAPHY

~~TOP SECRET~~

25X1

TOP SECRET

25X

PIR 75044
FIGURE 4

AIRCRAFT ASSEMBLY
PLANT 135
KHARKOV, USSR

25X

25X

25X

TOP SECRET

TOP SECRET

25X1

25X1

CIA IMAGERY ANALYSIS DIVISION

PIR 75044

25X1

REFERENCES

25X1



MAPS AND CHARTS

ACIC, U.S. Air Target Chart, Series 200, Sheet 0163-1HL, Scale 1:200,000
3rd Edition, July 1964 (SECRET)

25X1

ACIC, U.S. Air Target Chart, Series 200, Sheet 0234-12HL, Scale 1:200,000,
3rd Edition, January 1964 (SECRET)

REQUIREMENT

C-RR6-83,752

CIA/IAD PROJECT

30021-7

TOP SECRET

25X1

TOP SECRET

7
.
7

7
.
7

TOP SECRET