

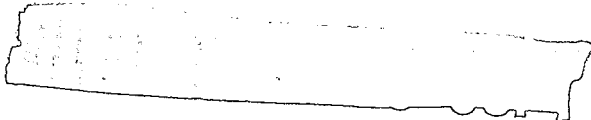
TOP SECRET



IMAGERY
ANALYSIS
DIVISION

PIR

PHOTOGRAPHIC INTELLIGENCE REPORT



LENINGRAD PETROLEUM PRODUCTS PLANT

LENINGRAD, USSR



25X1

Declass Review by NIMA/DOD

CIA/PIR75017



25X1

DATE AUGUST 1966

COPY 39

PAGES 9

GROUP 1
Excluded from automatic
downgrading and declassification

TOP SECRET

25X1

Approved For Release 2003/03/04 : CIA-RDP78T05161A001200010002-4

Approved For Release 2003/03/04 : CIA-RDP78T05161A001200010002-4

TOP SECRET

25X1

PIR - 75017

CIA IMAGERY ANALYSIS DIVISION

25X1

LENINGRAD PETROLEUM PRODUCTS PLANT
LENINGRAD, USSR

The Leningrad Petroleum Products Plant is located on the southeast edge of the city of Leningrad, USSR about one km southwest of the Leningrad Railroad Bridge over the Neva River (Figures 1 and 2). Approximate geographic coordinates are 59 53 50N - 30 22 50E.

Several spurs from the Leningrad-Moskva Railroad system enter the plant area. The installation is also served by road.

The basic plant area has not changed greatly [redacted] The limits of and the various processing and support facilities within the Leningrad plant are shown on Figure 3. The plant is divided into four separate areas with approximate measurements as follows:

25X1

25X1

AREA

SHAPE

- A
- B
- C
- D



- Rectangular
- Rectangular
- Rectangular
- Triangular

The annotations on Figure 3 correspond to the following discussion of facilities present at the plant:

A. Storage area consisting of five storage tanks - four large and one medium size tank.

B. This is the largest section and is the main processing section.

1. On coverage of [redacted] there are six large crude storage tanks. By [redacted] one had been removed.

25X1

25X1

2. Possible boilerhouse.

3. Intermediate and finished product storage - there are five large, eight medium and nine small tanks located in this area.

4. Possible grease processing.

25X1

TOP SECRET

25X1

5. Warehouses and open storage.
 6. Possible processing area for lube oil and probably a dewaxing unit.
 7. Possible administration and warehouses.
 8. Possible processing and warehouses.
- C. Shipping and receiving area - There are eight storage tanks and probable warehousing.
- D. Product and crude storage with possible processing units

Level of Activity

This plant has remained static, with regard to facilities for processing. The only changes, [redacted] were the addition of about five tanks in Area B(3) and the removal of one large tank in the same area (1). The plant does show signs of maintenance as some of the buildings and tanks have recently been painted.

25X1

TOP SECRET

25X1

CIA IMAGERY ANALYSIS DIVISION

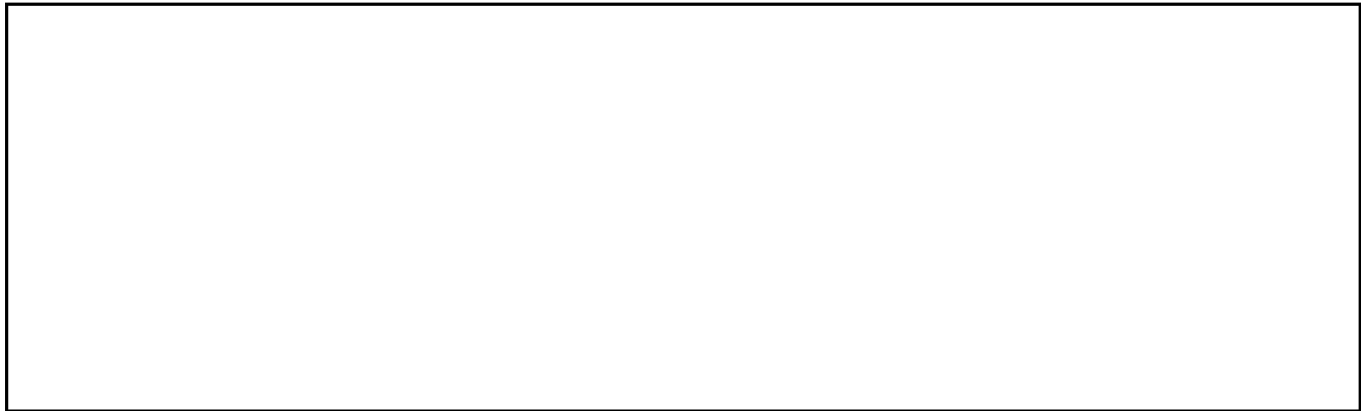
PIR - 75017

25X1

25X1

REFERENCES

25X1



MAPS AND CHARTS

General Locator Map, USSR (UNCLASSIFIED)

ACIC, US Air Target Chart, Series 200, Sheet 0153-4HL, 2nd Edition, May 1963
Scale 1:200,000 (SECRET)

REQUIREMENT

C-RR5-82,531

CIA/IAD PROJECT

30607-5

TOP SECRET

25X1

25X5

Approved For Release 2003/03/04 : CIA-RDP78T05161A001200010002-4

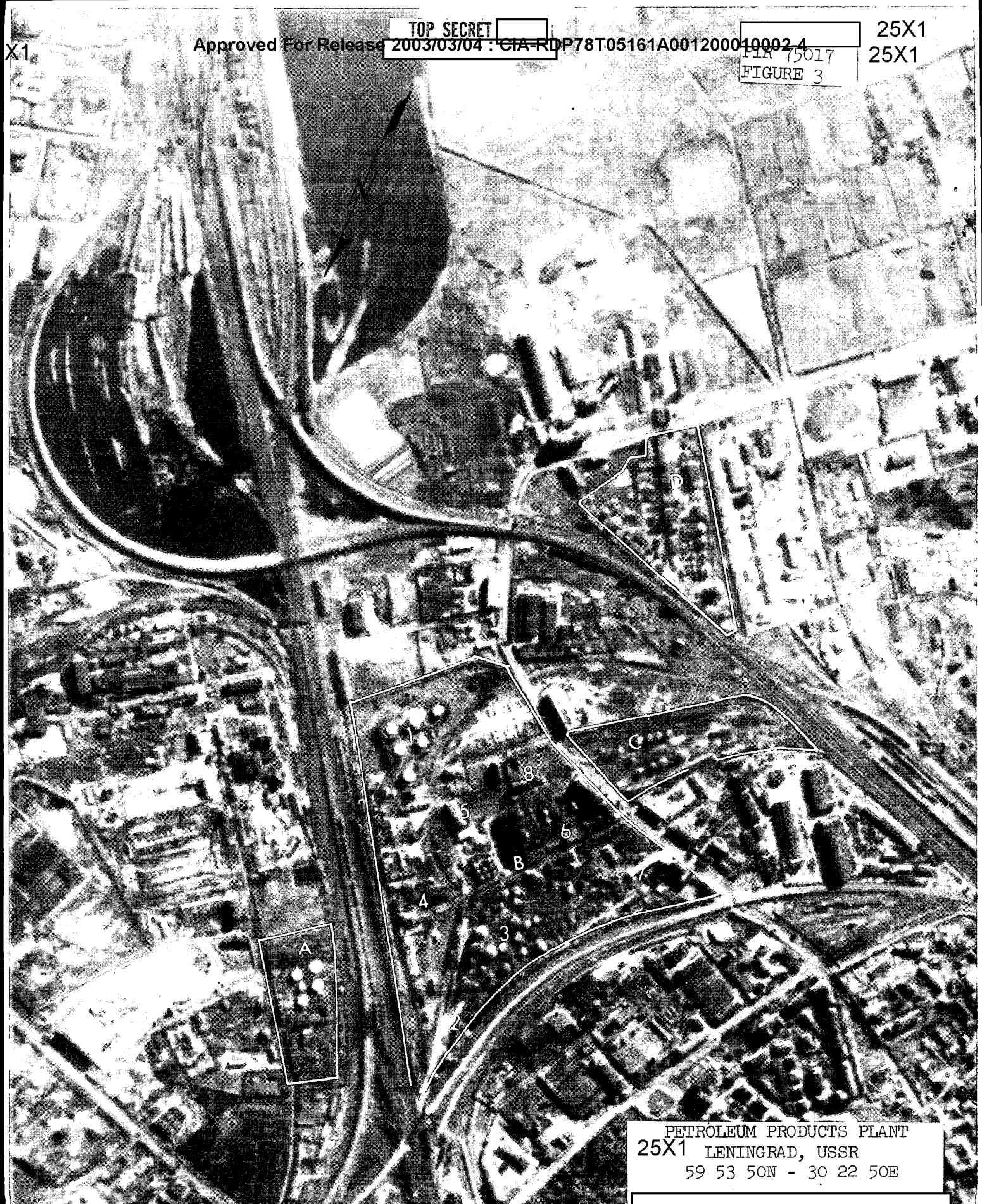
Approved For Release 2003/03/04 : CIA-RDP78T05161A001200010002-4

TOP SECRET

FIGURE 3

25X1
25X1

X1



PETROLEUM PRODUCTS PLANT
 25X1 Leningrad, USSR
 59 53 50N - 30 22 50E

X1

TOP SECRET

61A001200010002-4

TOP SECRET

003/03/04 - CIA-RDP78T05161A001200010002-4

FIGURE 4

25X1

X1



PETROLEUM PRODUCTS PLANT
LENINGRAD, USSR 25X1
59 53 50N - 30 22 50E

Approved For Release 003/03/04 : CIA-RDP78T05161A001200010002-4

TOP SECRET

25X1

TOP SECRET

Approved For Release 2003/05/04 : CIA-RDP78T05161A001200010002-4

25X1

FIGURE 5



K1

PETROLEUM PRODUCTS PLANT
LENINGRAD, USSR
59 53 50N - 30 22 50E

Approved For Release 2003/05/04 : CIA-RDP78T05161A001200010002-4

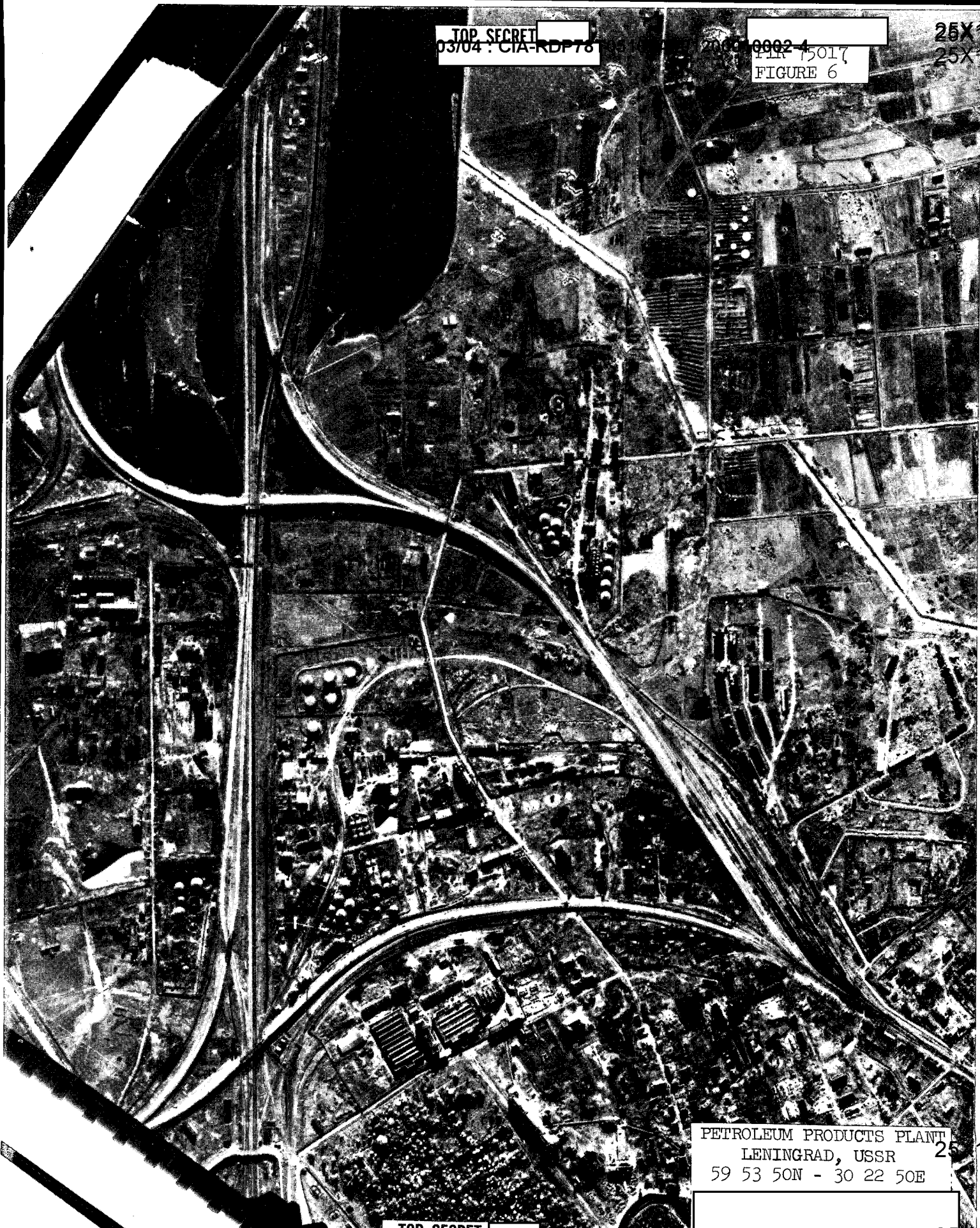
TOP SECRET

001200010002-4

TOP SECRET
03704 : CIA-RDP78

200010002-4
PLR 75017
FIGURE 6

25X1
25X1



PETROLEUM PRODUCTS PLANT
LENINGRAD, USSR
59 53 50N - 30 22 50E

25

Approved for Release 2003/08/07 : CIA-RDP80-01000A000100010001-6

TOP SECRET
CIA

200010002-4

25

25X1

TOP SECRET

TOP SECRET