

TOP SECRET



I
MAGERY
A
NALSIS
D
VISION

PIR

PHOTOGRAPHIC INTELLIGENCE REPORT

[REDACTED]

CHINESE POWER PLANTS

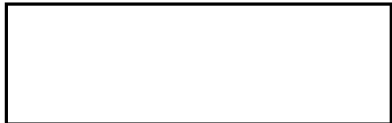
KWANGSI PROVINCE

25X1



25X1

Declass Review by NIMA / DOD



DATE JULY 1966

COPY 33

PAGES 4

GROUP 1
Excluded from automatic
downgrading and declassification

TOP SECRET

Approved For Release 2002/08/12 : CIA-RDP78T05161A001100010050-2
25X1

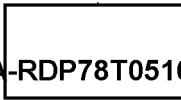
Approved For Release 2002/08/12 : CIA-RDP78T05161A001100010050-2

25X1



Approved For Release 2002/08/12 : CIA-RDP78T05161A001100010050-2

TOP SECRET



25X1

25X1

CIA IMAGERY ANALYSIS DIVISION



CHINESE POWER PLANTS

KWANGSI PROVINCE

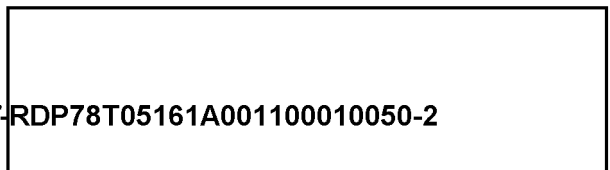
Fu-chung Hydro Power Plant

REQUIREMENT

C-RR5-83,218

CIA/IAD PROJECT

30647-6



25X1

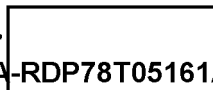
Approved For Release 2002/08/12 : CIA-RDP78T05161A001100010050-2

TOP SECRET

25X1



TOP SECRET



Approved For Release 2002/08/12 : CIA-RDP78T05161A001100010050-2

25X1

CIA IMAGERY ANALYSIS DIVISION



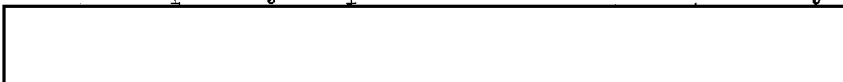
25X1

FU-CHUNG HYDRO POWER PLANT

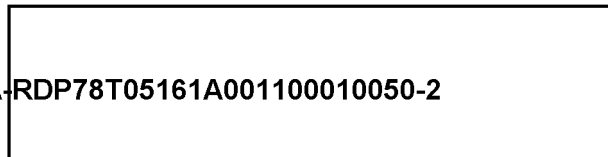
The Fu-chung Hydro Power Plant is located 8.1 nm north of Chung-shan on the Liu-shiu (River) at coordinates 24 39 40N - 111 17 10E. This nearly completed facility is of the consolidated concrete type with completed spillway and powerhouse. The number of turbo-generators could not be determined, however, the powerhouse measures approximately 80 - 85 feet long. Probable penstock intake-gate hoists are being constructed atop the dam and, when completed, should provide an indication of the number of generator units.

A substation is located south of the powerhouse and may contain one small transformer. The main transformer facilities will probably be situated in the building east of and contiguous to the powerhouse.

There has been no new construction or indications of turbulence from the spillway or powerhouse since this facility was first observed



25X1



25X1

TOP SECRET

[Redacted]

[Redacted]

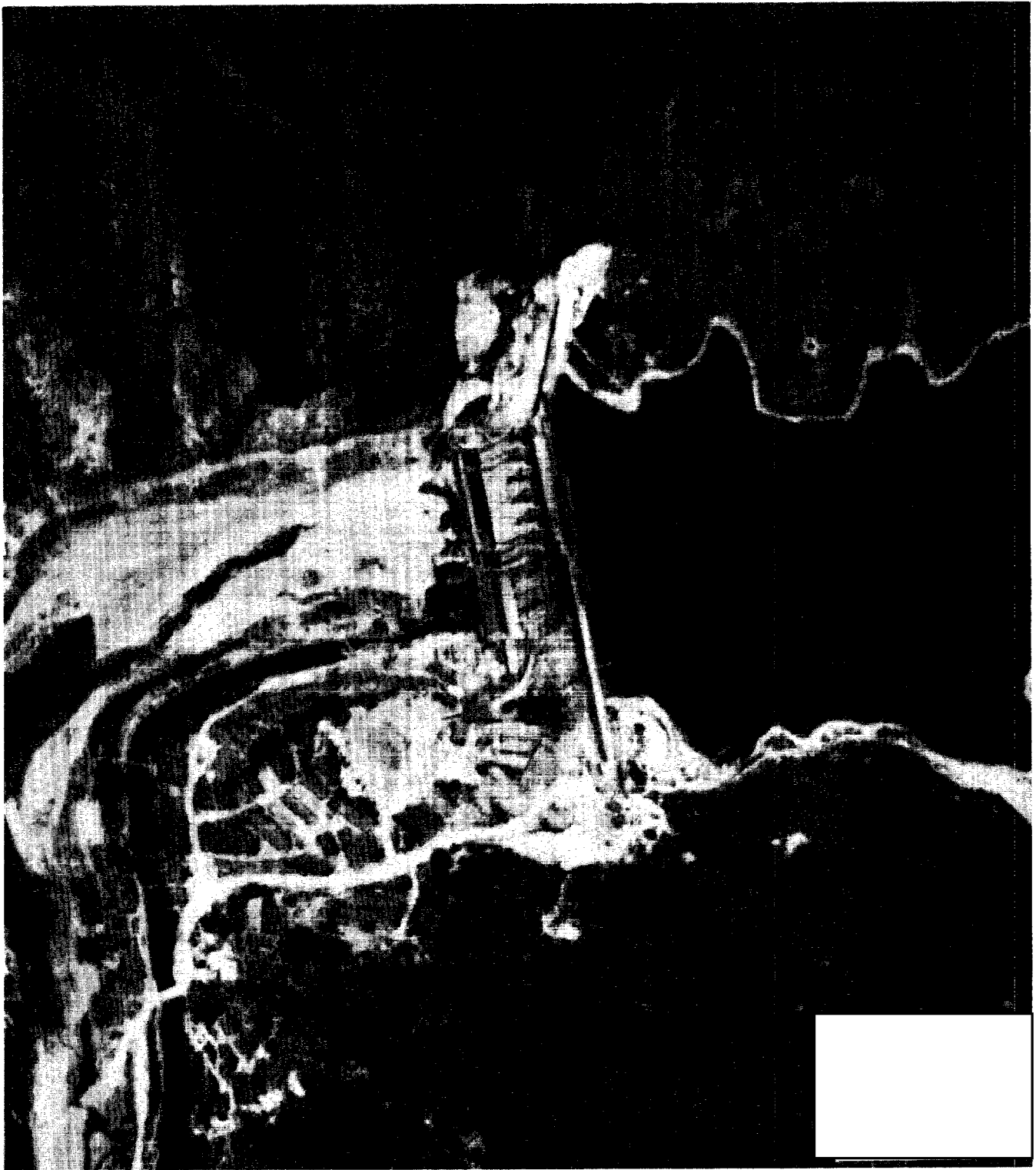
FIGURE 2

25X1

25X1

25X1

FU-CHUNG HYDRO POWER PLANT



25X1

[Redacted]

[Redacted]

25X1

25X1

Approved For Release 2002/08/12 : CIA-RDP78T05161A001100010050-2

TOP SECRET

Approved For Release 2002/08/12 : CIA-RDP78T05161A001100010050-2

TOP SECRET