

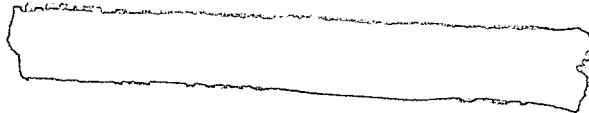
TOP SECRET



I  
MAGERY  
A  
NALYSIS  
D  
IVISION

PIR

PHOTOGRAPHIC INTELLIGENCE REPORT



CHINESE POWER PLANTS

TINGSIA HUI AUTONOMOUS REGION



25X1

25X1

Declass Review by NIMA / DOD



DATE JUNE 1966

COPY 39

PAGES 10

TOP SECRET

GROUP 1  
Excluded from automatic  
downgrading and declassification

25X1

[Redacted]

**TOP SECRET**

[Redacted]

Approved For Release 2002/08/12 : CIA-RDP78T05161A001100010044-9

25X1  
25X1  
25X1

CIA IMAGERY ANALYSIS DIVISION

[Redacted]

## CHINESE POWER PLANTS

NINGSIA HUI AUTONOMOUS REGION

- (A) Chin-chi Hydro Power Plant (Ching-tung)
- (B) Shih-tsui Tzu Thermal Power Plant

REQUIREMENT

C-RR5-83,218

CIA/IAD PROJECT

30647-6

25X1

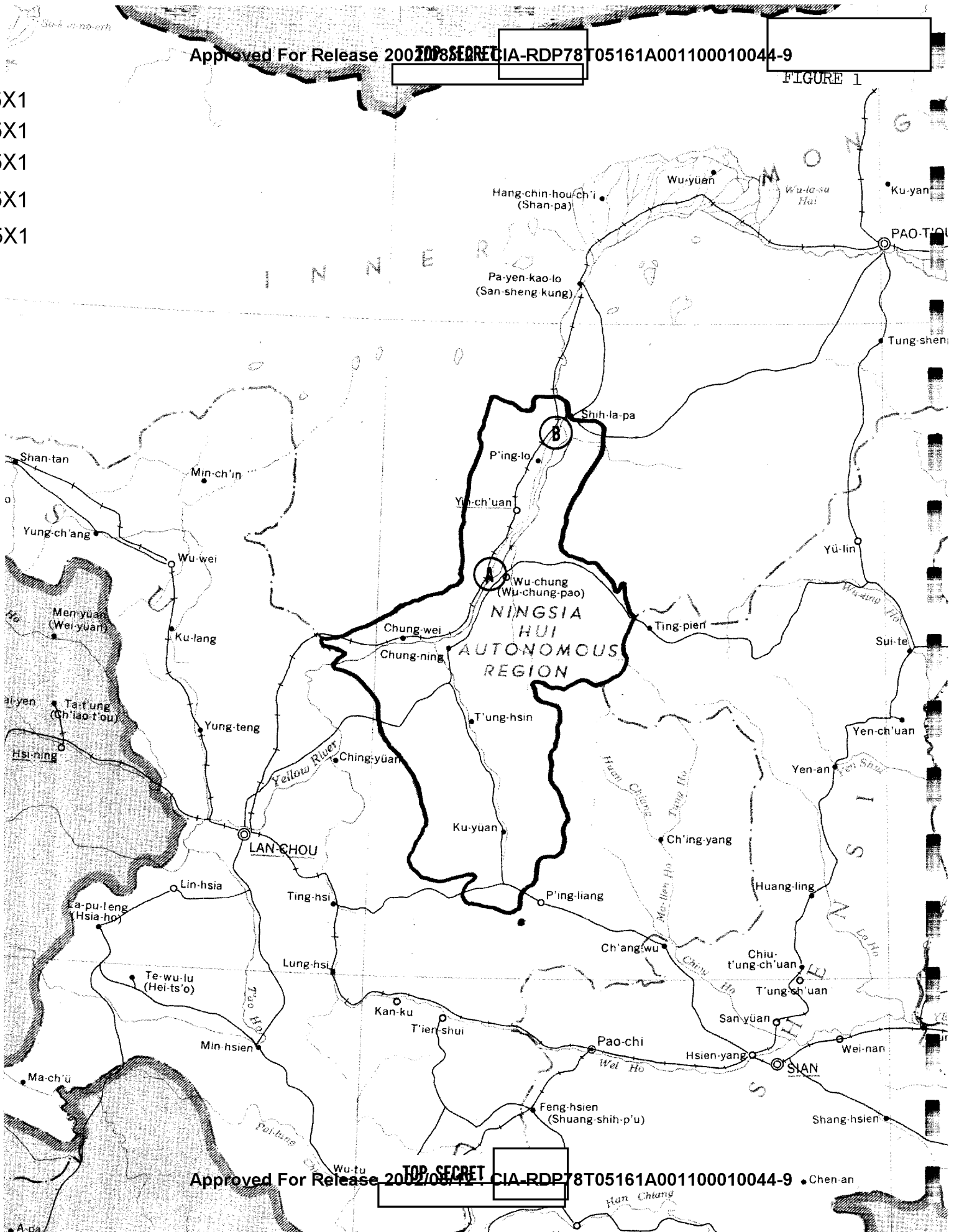
[Redacted]

Approved For Release 2002/08/12 : CIA-RDP78T05161A001100010044-9

**TOP SECRET**

FIGURE 1

25X1  
25X1  
25X1  
25X1  
25X1



Approved For Release 2002/08/12 : CIA-RDP78T05161A001100010044-9

A

Approved For Release 2002/08/12 : CIA-RDP78T05161A001100010044-9

[Redacted]

TOP SECRET

[Redacted]

Approved For Release 2002/08/12 : CIA-RDP78T05161A001100010044-9

25X1

CIA IMAGERY ANALYSIS DIVISION

[Redacted]

25X1

25X1

CHIN-CHI HYDRO POWER PLANT (CHING-TUNG)

[Redacted]

NPIC NUMBER - 6-C

25X1

The Chin-chi Hydro Power Plant (Ching-tung), located on the Huang Ho (Yellow River) at coordinates 37 52 40N - 105 59 20E, is still under construction and has progressed little [Redacted]. The facility is of the concrete, consolidated type and consists of a probable eight unit powerhouse flanked on the west by a weir. Photography [Redacted] revealed that the weir was finished and that the powerhouse sub-structure was nearly completed; seven powerhouse chambers or units were visible, each with a clearly defined circular turbine pit. An eighth unit will probably be added alongside the one already being constructed in the section spanning the small eastern river channel. No sub-station or transmission facilities are apparent.

25X1

25X1

25X1

Minor additions occurred to the powerhouse sub-structure during the period [Redacted]

[Redacted]

25X1

[Redacted]

25X1

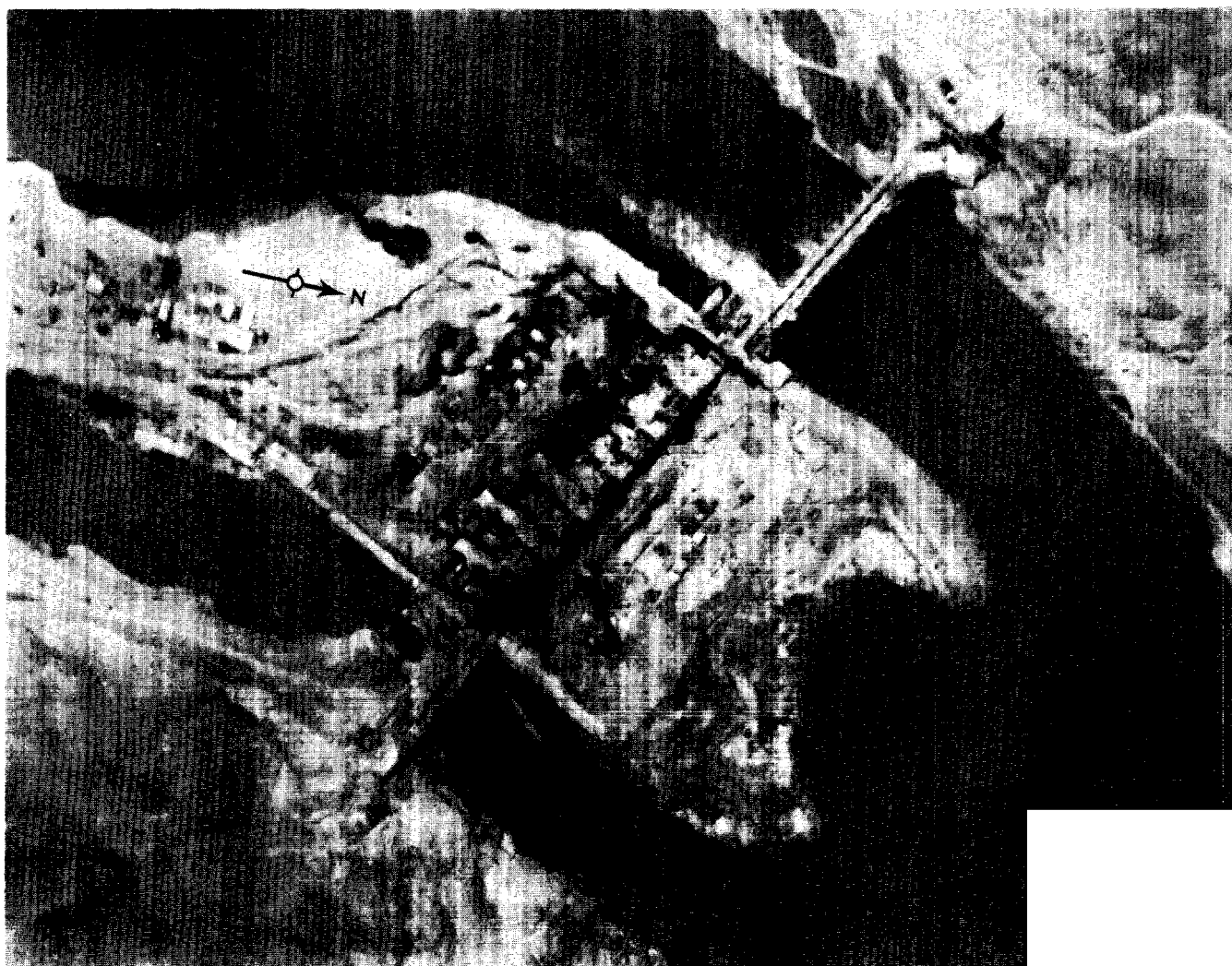
TOP SECRET

25X1  
25X1  
25X1

TOP SECRET

FIGURE 2

CHIN-CHI HYDRO POWER PLANT (CHING-TUNG)



25X1

25X1

25X1

TOP SECRET

TOP SECRET

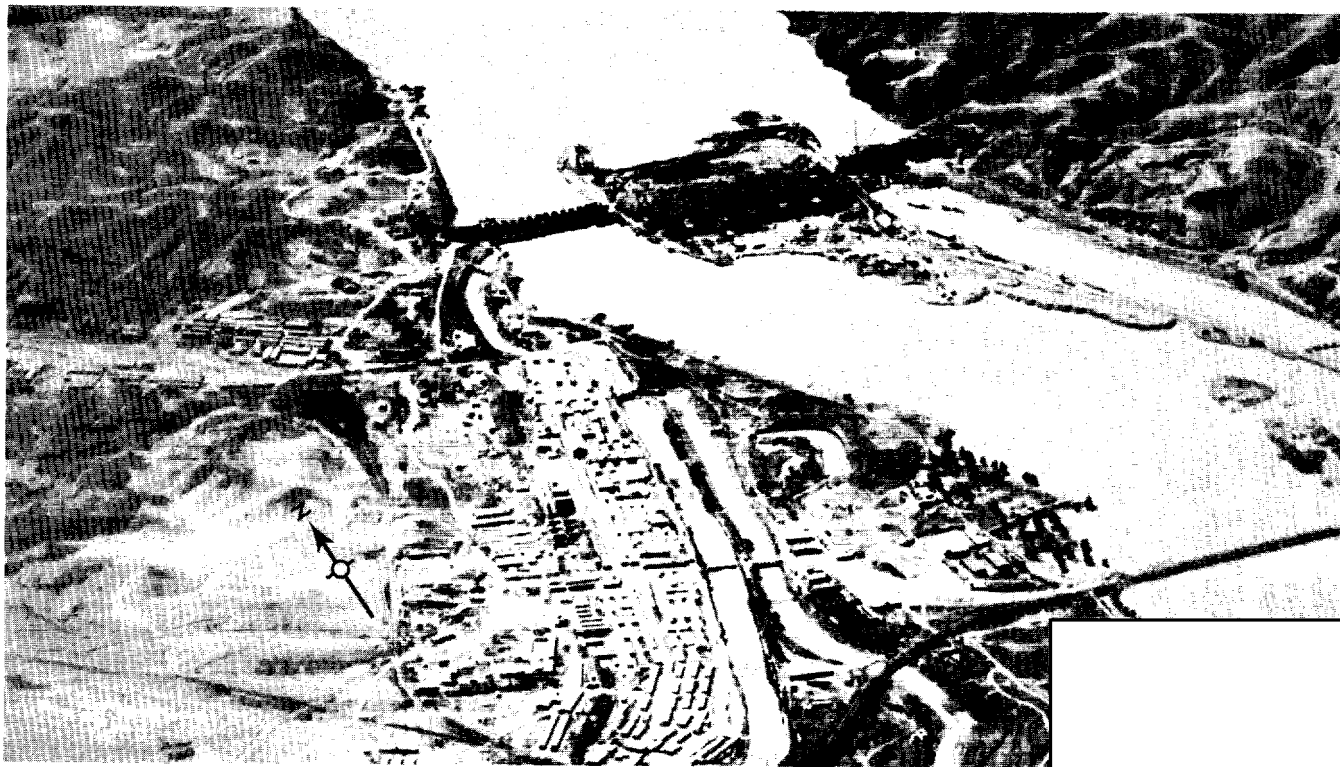
FIGURE 3

CHIN-CHI HYDRO POWER PLANT (CHING-TUNG)

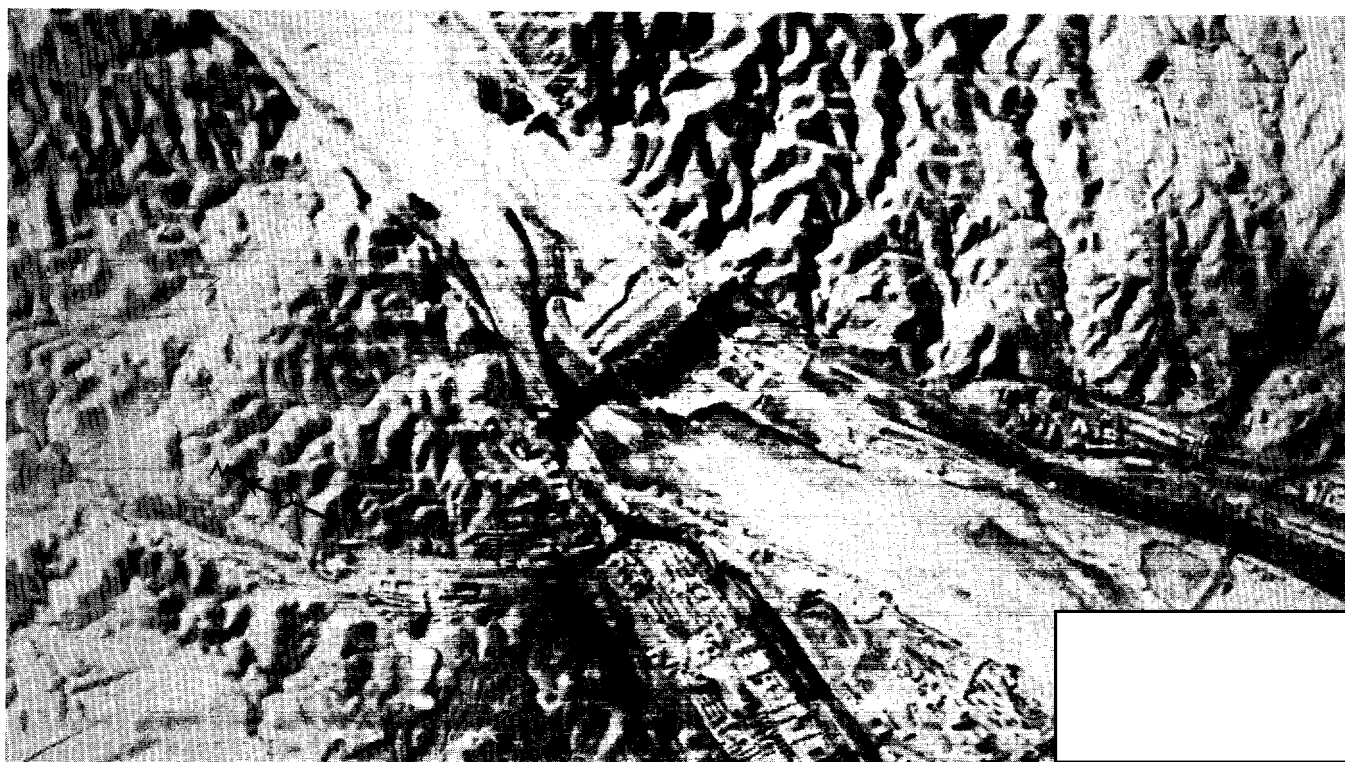
25X1

25X1

25X1



25X1



25X1

TOP SECRET

25X1

25X1



✓

**B**

[Redacted]

**TOP SECRET**

[Redacted]

Approved For Release 2002/08/12 : CIA-RDP78T05161A001100010044-9

25X1

25X1

CIA IMAGERY ANALYSIS DIVISION

[Redacted]

25X1

SHIH-TSUI TZU THERMAL POWER PLANT

[Redacted]

25X1

The Shih-tsui Tzu Thermal Power Plant is located on the western bank of the Yellow River at approximate coordinates 38 57N - 106 48E (maps of the area are inaccurate). The facility is coal-operated, rail-served, and consists of a control house, sub-station with two transformers, coal conveyor system, two spray ponds, one large possible oil storage tank, and numerous support/storage buildings.

The boilerhouse appears to consist of two boiler units, each serviced by a single stack (A and B). The generator hall is compartmented into two sections and is connected by one set of three-cable power leads to a transformer.

New construction at this facility [Redacted] consisted of a coal yard and coal conveyor system, two spray ponds, a bridge crane, a rail spur and several small support/storage buildings.

25X1

[Redacted]

25X1

**TOP SECRET**

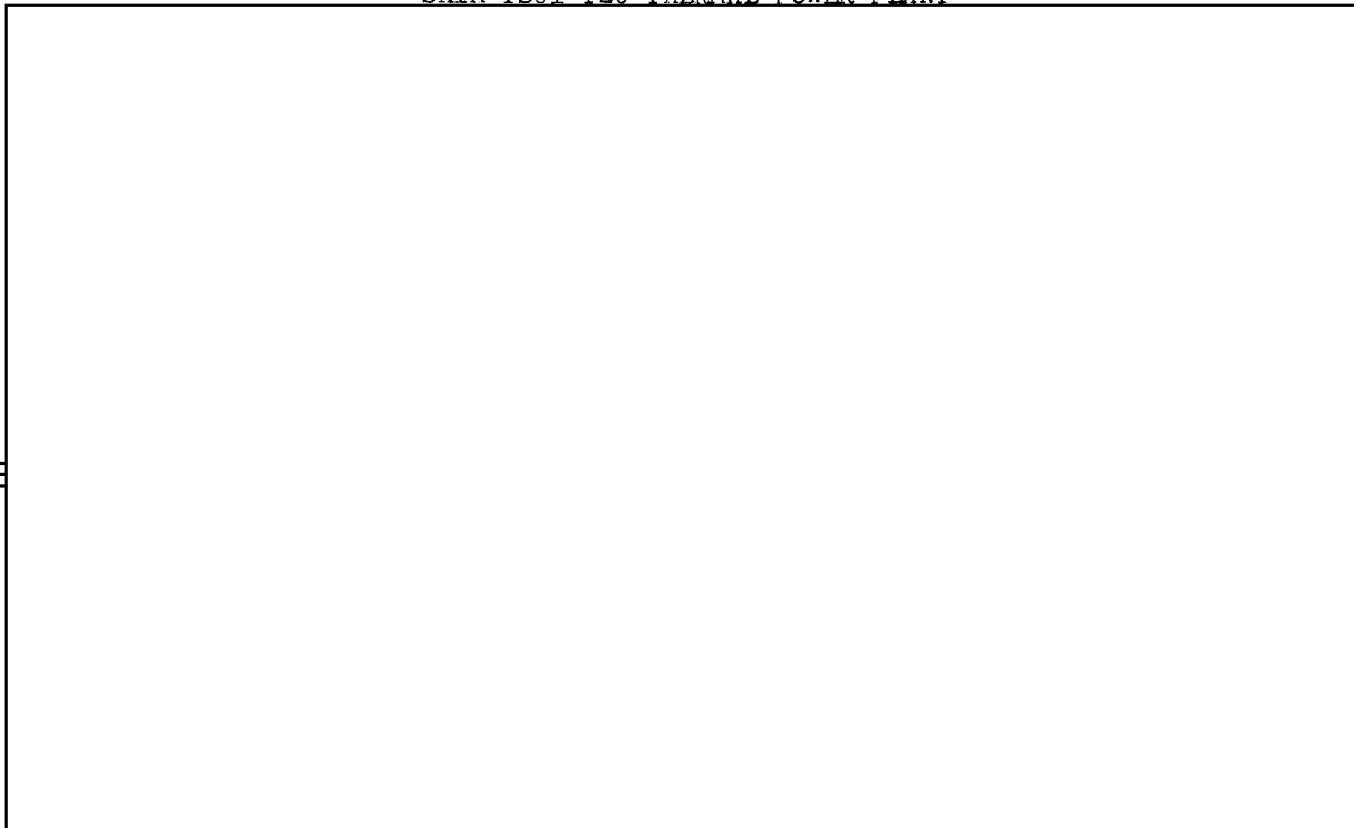
25X1  
25X1  
25X1

Approved For Release 2002/08/12 : CIA-RDP78T05161A001100010044-9

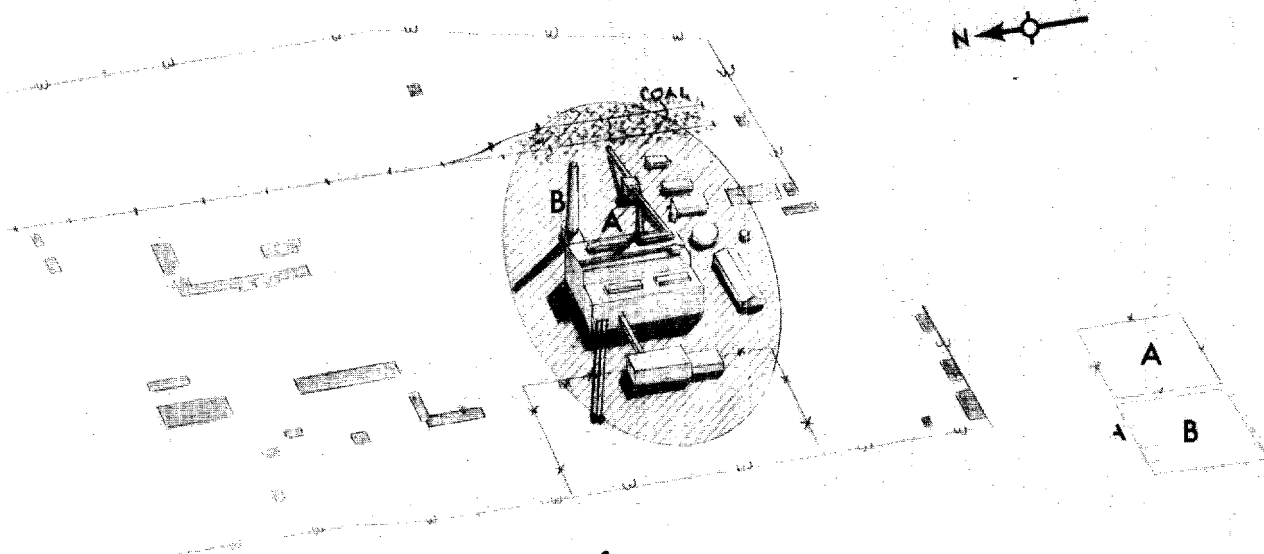
TOP SECRET

FIGURE 4

SHIH-TSUI TZU THERMAL POWER PLANT



ILLEGIBLE



25X1  
25X1

Approved For Release 2002/08/12 : CIA-RDP78T05161A001100010044-9

TOP SECRET

TOP SECRET  
[Redacted]

[Redacted]

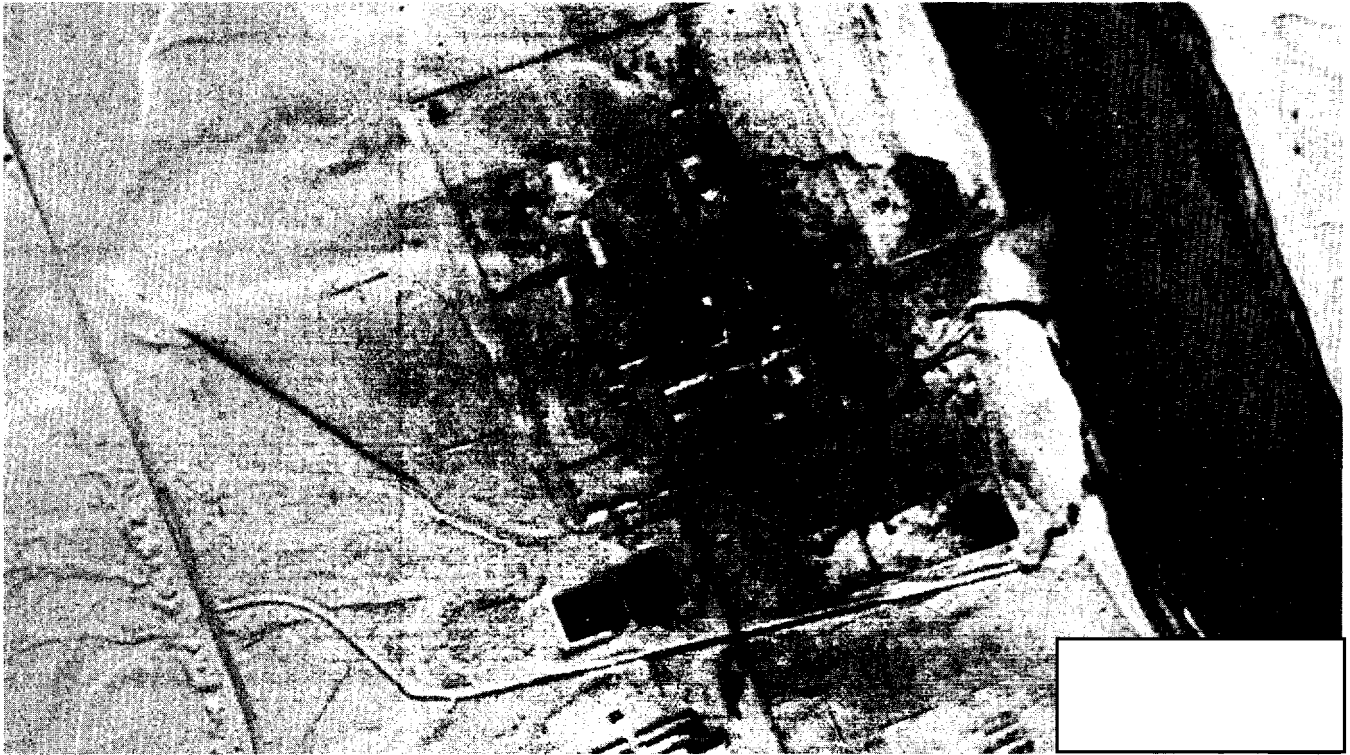
FIGURE 5

25X1

25X1

25X1

SHIH-TSUI TZU THERMAL POWER PLANT



25X1

[Redacted]

TOP SECRET  
[Redacted]

25X1

25X1

25X1

Approved For Release 2002/08/22 : CIA-RDP78T05161A001100010044-9

TOP SECRET

CIA-RDP78T05161A001100010044-9

25X1

CIA IMAGERY ANALYSIS DIVISION

[Redacted]

25X1

SHIH-TSUI TZU THERMAL POWER PLANT

CONSTRUCTION ACTIVITY	LEVEL OF PRODUCTION
None	Light smoke from stack B.
A spray pond (A) has been constructed.	Possible very light smoke from stack A. Spray pond A is empty.
Clouds preclude analysis.	
A railroad spur has been laid into a newly completed coal yard. A new coal conveyor system is also present; all construction occurred [Redacted]	Light smoke from stack B. Spray pond A is completely filled and has four units in operation.
A bridge crane has been constructed in the coal yard.	Light smoke from stack B.
A second spray pond (B) has been installed.	No smoke observed. Spray ponds A and B are in operation.

25X1

25X1

[Redacted]

25X1

TOP SECRET

Approved For Release 2002/08/12 : CIA-RDP78T05161A001100010044-9

~~TOP SECRET~~

CIA-RDP78T05161A001100010044-9

25X1

25X1

CIA IMAGERY ANALYSIS DIVISION

[Redacted]

25X1

SHIH-TSUI TZU THERMAL POWER PLANT

	CONSTRUCTION ACTIVITY	LEVEL OF PRODUCTION
	None	Appears to be light smoke from stacks A and B. Spray ponds A and B are full but don't appear activated.

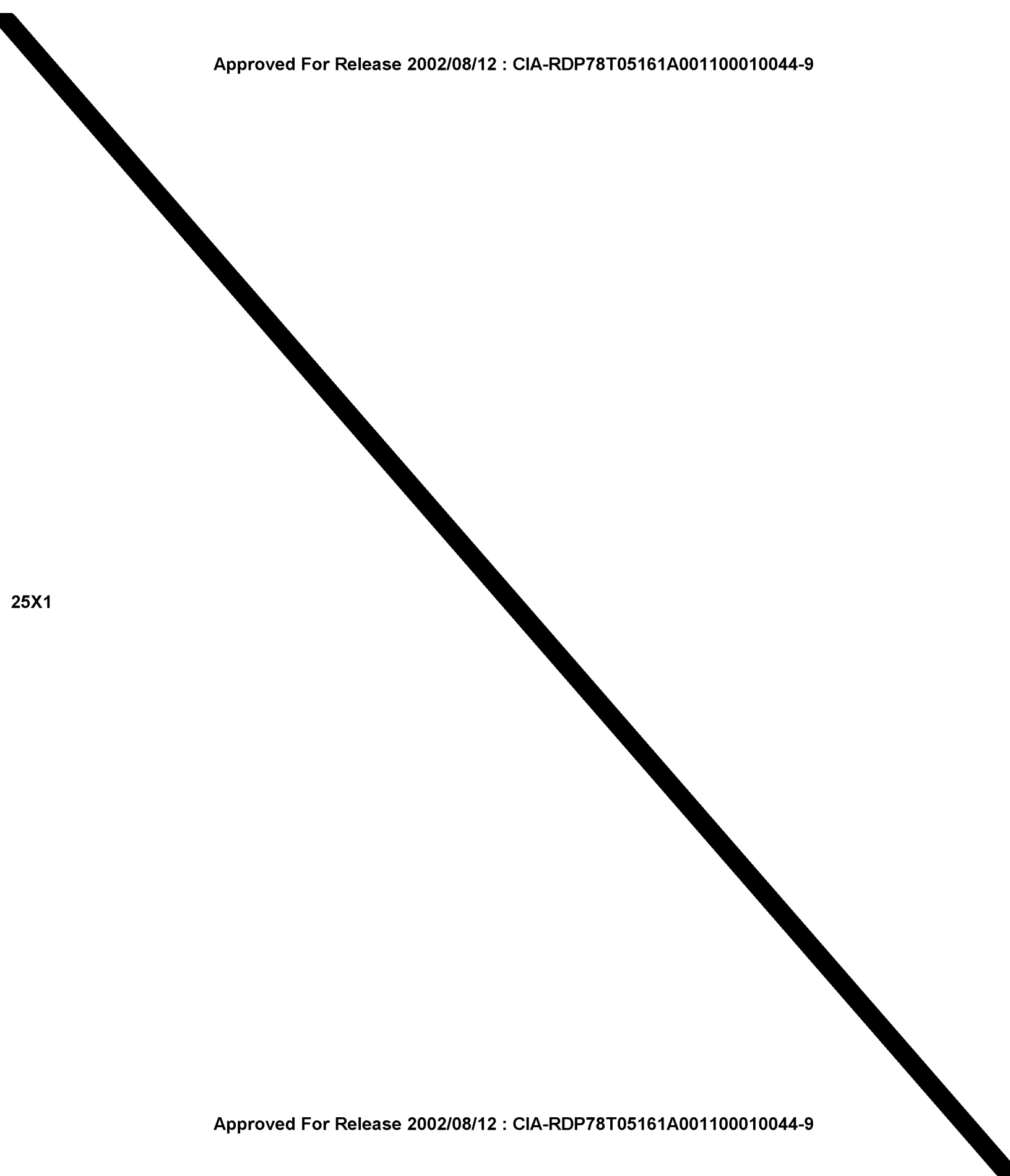
25X1

[Redacted]

25X1

~~TOP SECRET~~

Approved For Release 2002/08/12 : CIA-RDP78T05161A001100010044-9



25X1

Approved For Release 2002/08/12 : CIA-RDP78T05161A001100010044-9

**TOP SECRET**

Approved For Release 2002/08/12 : CIA-RDP78T05161A001100010044-9

**TOP SECRET**

Approved For Release 2002/08/12 : CIA-RDP78T05161A001100010044-9