

TOP SECRET



I
MAGERY
A
NALYSIS
D
IVISION

PIR

PHOTOGRAPHIC INTELLIGENCE REPORT

MILITARY INSTALLATIONS

KRIVROY ROG - USSR

Declass Review by NIMA/DOD

[Redacted]

25X1

CIA/PIR 67315

[Redacted]

25X1

DATE JUNE 1966

COPY 39

PAGES 18

TOP SECRET

GROUP 1
Excluded from automatic
downgrading and declassification

25X1

Approved For Release 2003/03/04 : CIA-RDP78T05161A001000010035-0

Approved For Release 2003/03/04 : CIA-RDP78T05161A001000010035-0

TOP SECRET

CIA IMAGERY ANALYSIS DIVISION

MILITARY INSTALLATIONS

KRIVOY ROG - USSR

- 1 -

TOP SECRET

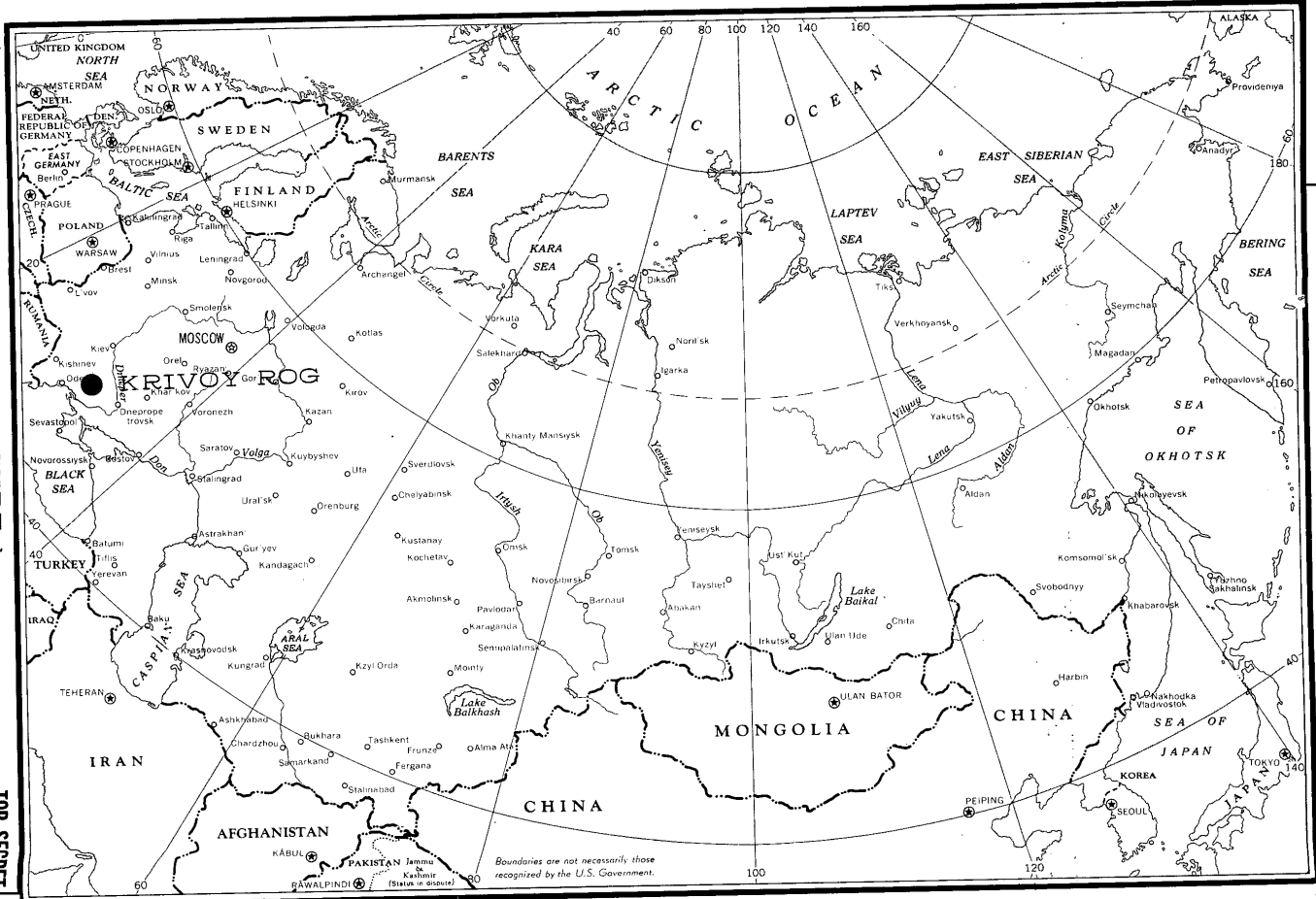


FIGURE 1

TOP SECRET 25X
TOP SECRET 25X
TOP SECRET 25X
CIA/RR-67315

K1

Approved For Release 2003/03/04 : CIA-RDP78T05161A001000010035-0

TOP SECRET

25X1

CIA IMAGERY ANALYSIS DIVISION

PREFACE

This project is in response to a requirement for updating the Soviet Military Order of Battle Studies of the Ground Force Installations at Krivoy Rog. Two military installations are observed at Krivoy Rog: Krivoy Rog Army Barracks AL-1 and Krivoy Rog Army Barracks AL-2.

This report contains a functional analysis of areas and buildings, an analysis of security and changes to facilities, and a vehicle and equipment count.

All measurements have been made by the CIA/IAD project analyst.

- 2 -

Approved For Release 2003/03/04 : CIA-RDP78T05161A001000010035-0

TOP SECRET

25X1

TOP SECRET

CIA/PIR-67315

25X1

CIA IMAGERY ANALYSIS DIVISION

KRIVOY ROG ARMY BARRACKS AL-1

BE Number [redacted] coordinates 47 53N-033 19E

I. General (See Figure 2)

Krivoy Rog Army Barracks AL-1 is located in the southwest sector of Krivoy Rog. The installation consists of a barracks and administration area, a barracks area, a vehicle storage area, 2 vehicle/equipment storage areas, 2 storage areas, and 2 probable storage areas.

II. Building Analysis (by Functional Area - See Figures 2 and 3)

a. Barracks and Administration Area

25X1

<u>ITEM</u>	<u>FUNCTION</u>	<u>DIMENSIONS</u>
1.	Barracks (multistory)	
2.	Barracks (multistory)	
3.	Support building	
4.	Support building	
5.	Barracks/administration building (multistory)	
6.	Probable barracks (multistory)	
7.	Administration building (multistory)	
8.	Probable barracks (multistory)	
9.	Support building	
10.	Gatehouse	
11.	Barracks (multistory)	
12.	Barracks (multistory)	
13.	Barracks (multistory)	
14.	Gatehouse	
15.	Gatehouse	
16.	Support building	
17.	Support building	
18.	Support building	

25X1

TOP SECRET

X1
X1

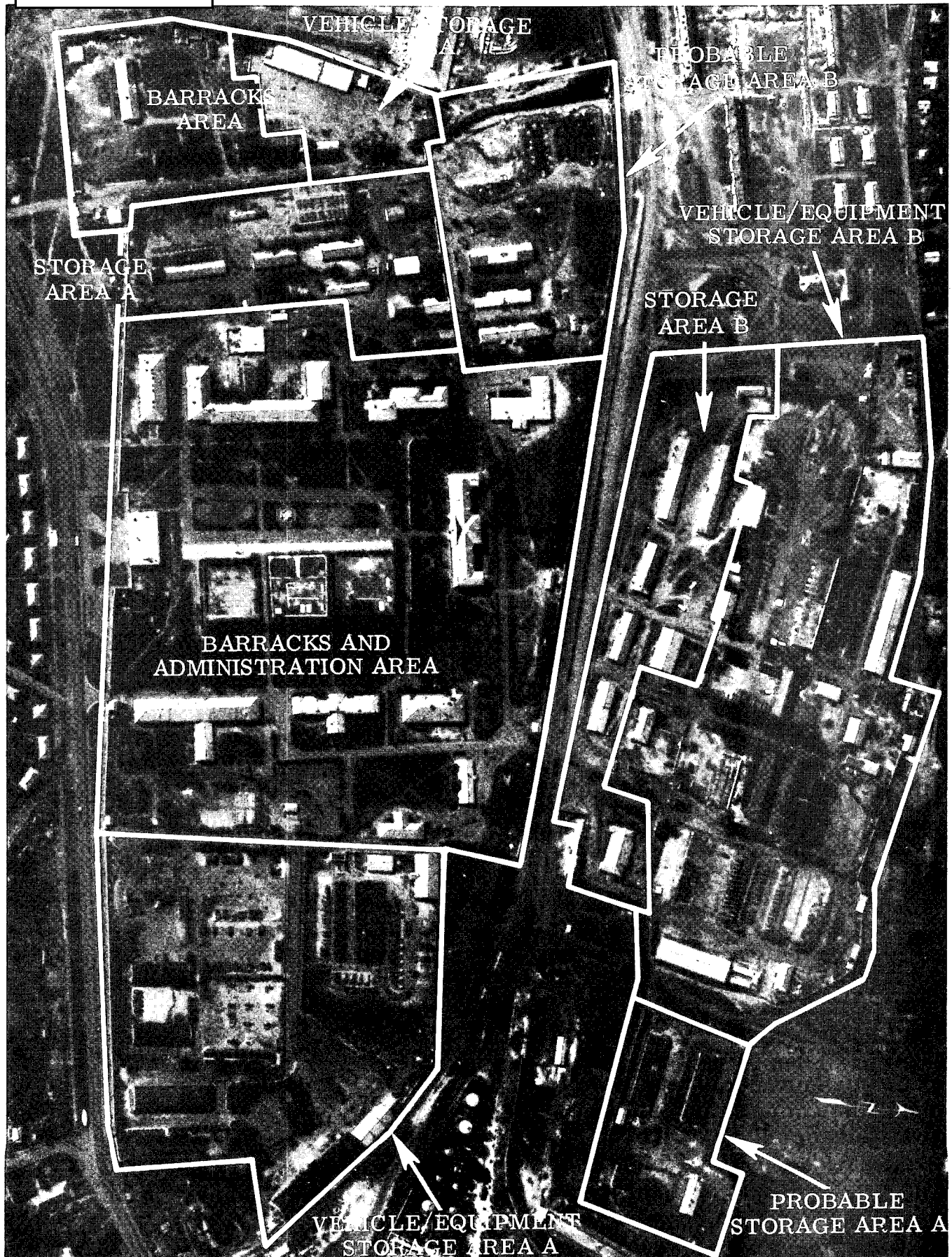
TOP SECRET

Approved For Release 2003/03/04 : CIA-RDP78T05161A001000010035-0

CIA/PIR-67315

2 X

KRIVOY ROG ARMY BARRACKS AL 1



X1

Approved For Release 2003/03/04 : CIA-RDP78T05161A001000010035-0

FIGURE 2

TOP SECRET

25X
2 X

KRIVOY ROG ARMY BARRACKS AL 1

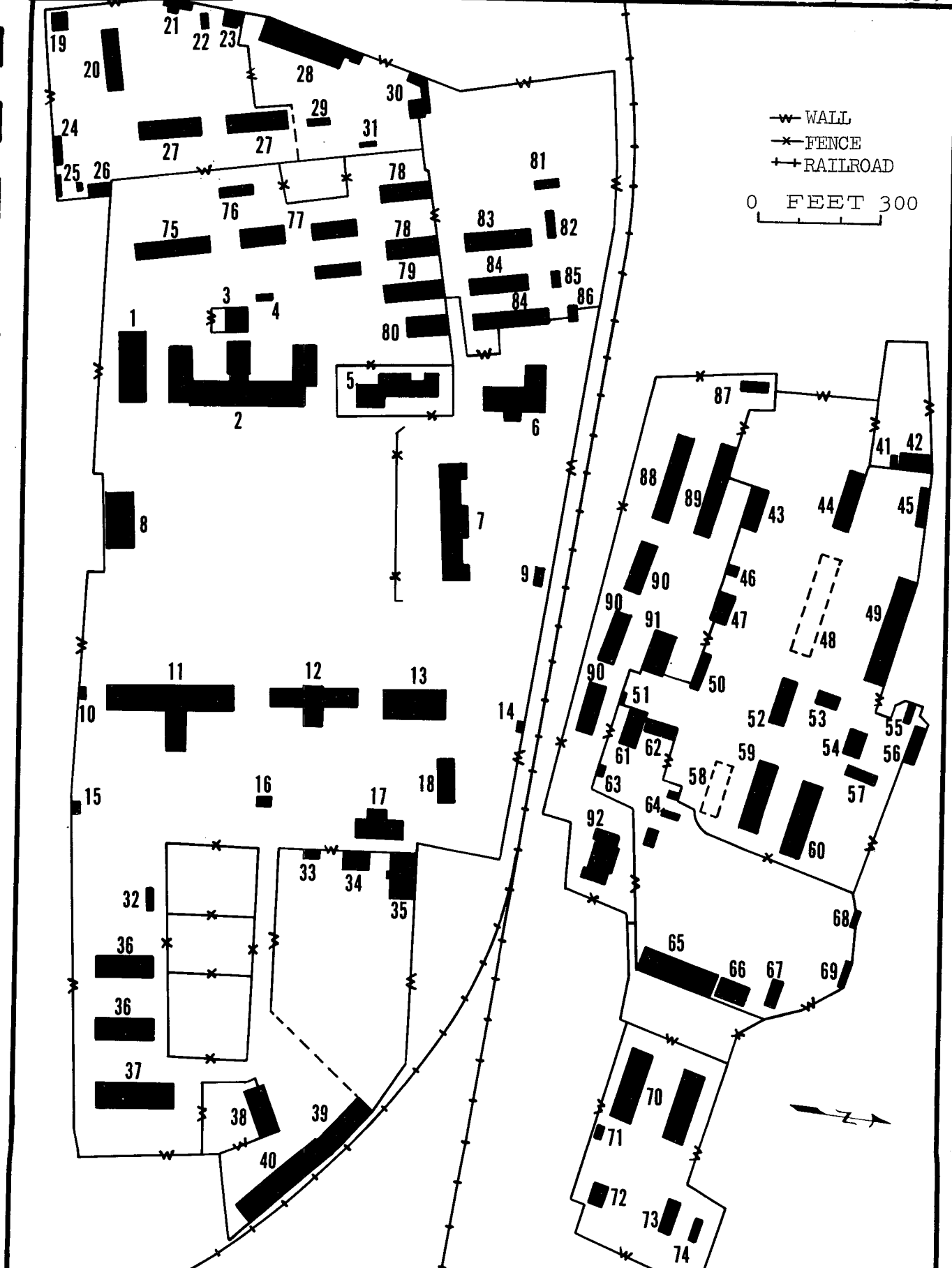


FIGURE 3

TOP SECRET

CIA/PIR-67315

CIA IMAGERY ANALYSIS DIVISION

b. Barracks Area

<u>ITEM</u>	<u>FUNCTION</u>
19.	Support building
20.	Barracks
21.	Support building
22.	Support building
23.	Support building
24.	Support building
25.	Support buildings (2)
26.	Support building
27.	Barracks

c. Vehicle Storage Area

<u>ITEM</u>	<u>FUNCTION</u>
28.	Vehicle shed
29.	Support building
30.	Support building
31.	Support building

d. Vehicle/Equipment Storage Area A

<u>ITEM</u>	<u>FUNCTION</u>
32.	Support building
33.	Support building
34.	Probable vehicle/equipment shed
35.	Probable administration building
36.	Vehicle sheds
37.	Vehicle shed
38.	Vehicle shed
39.	Vehicle shed
40.	Vehicle shed

e. Vehicle/Equipment Storage Area B

<u>ITEM</u>	<u>FUNCTION</u>
41.	Support building
42.	Probable administration building
43.	Vehicle shed
44.	Vehicle shed

TOP SECRET

TOP SECRET

CIA/PIR-67315

25X1

CIA IMAGERY ANALYSIS DIVISION

25X1

<u>ITEM</u>	<u>FUNCTION</u>
45.	Support building
46.	Support building
47.	Probable vehicle shed
48.	Vehicle shed (being razed)
49.	Vehicle shed
50.	Support building
51.	Gatehouse
52.	Vehicle shed
53.	Support building
54.	Probable storage building
55.	Support building
56.	Support building
57.	Probable storage building
58.	Probable vehicle shed (being razed)
59.	Vehicle shed
60.	Vehicle shed
61.	Probable administration building
62.	Probable vehicle shed
63.	Gatehouse
64.	Support buildings (3)
65.	Vehicle shed
66.	Support building
67.	Probable administration building
68.	Support building
69.	Support building

f. Probable Storage Area A

<u>ITEM</u>	<u>FUNCTION</u>
70.	Probable storage building (2)
71.	Support building
72.	Support building
73.	Probable administration building
74.	Support building

g. Storage Area A

<u>ITEM</u>	<u>FUNCTION</u>
75.	Vehicle shed

TOP SECRET

25X1

TOP SECRET

CIA/PIR-67315

CIA IMAGERY ANALYSIS DIVISION

<u>ITEM</u>	<u>FUNCTION</u>	<u>DIMENSIONS</u>
76.	Storage building	
77.	Storage buildings (2)	
78.	Storage buildings (2)	
79.	Storage building	
80.	Storage building	

h. Probable Storage Area B

<u>ITEM</u>	<u>FUNCTION</u>	<u>DIMENSIONS</u>
81.	Support building	
82.	Support building	
83.	Probable storage building	
84.	Probable storage buildings (2)	
85.	Support building	
86.	Support building	

i. Storage Area B

<u>ITEM</u>	<u>FUNCTION</u>	<u>DIMENSIONS</u>
87.	Probable storage building	
88.	Storage building	
89.	Storage building	
90.	Storage buildings (3)	
91.	Probable storage building	
92.	Probable barracks/administration building	120' X 60'

III. Security (See Figure 3)

The installation is externally secured on the south side of the rail line by a wall and on the north side of the rail line by a combination wall and fence. Parts of vehicle/equipment storage Area A and all of vehicle/equipment storage Area B are internally secured as is the vehicle storage area and both probable storage areas. The possible FA storage area is separately secured by a fence.

IV. Changes in Facilities

Two vehicle sheds are in the process of being razed and 1 probable vehicle/equipment shed has been added since [redacted]

TOP SECRET

CIA IMAGERY ANALYSIS DIVISION

V. Vehicles and Pieces of Equipment Observed* (by Functional Area -
See Figure 2)

Vehicle Storage Area

- 5 Cargo trucks
- 3 Probable van trucks
- 2 U/I vehicles
- 3 U/I pieces of equipment

Vehicle/Equipment Storage Area A

- 5 Probable tank recovery vehicles
- 43 Cargo trucks
- 5 Possible cargo trucks
- 1 Probable van truck
- 1 Probable UAZ 69 utility truck
- 13 U/I vehicles
- 7 Probable 57 mm AAA pieces
- 1 Probable FIRECAN
- 1 Possible RANGER
- 5 Cargo trailers

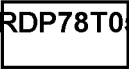
Vehicle/Equipment Storage Area B

- 20 Cargo trucks
- 6 Probable van trucks
- 2 Probable UAZ 69 utility trucks
- 3 Probable truck mounted cranes
- 4 Possible TMM bridges
- 70 Possible TPP pontons
- 1 Possible K-61 amphibious vehicle
- 1 Possible ZIL 485 amphibious vehicle
- 52 U/I vehicles (43 canvas covered)
- 2 Possible BMK-90 power boats
- 4 Possible BMK-70 power boats
- 14 Possible FA pieces
- 3 Possible generator trailers
- 14 Possible ZPU-2/4 AAMG
- 2 U/I trailers
- 3 U/I pieces of equipment

1



TOP SECRET



25X1

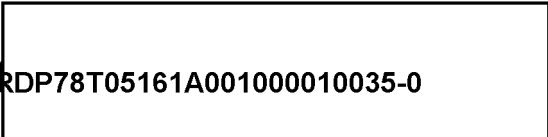
CIA IMAGERY ANALYSIS DIVISION

Storage Area A

- 13 Probable cargo trucks
- 18 U/I vehicles
- 30 Possible 122 mm howitzers
- 26 Possible 152 mm howitzers

Probable Storage Area B

- 8 U/I vehicles

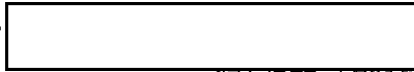


25X1

25X1



TOP SECRET




CIA/PIR-67315

25X1

CIA IMAGERY ANALYSIS DIVISION

25X1

BE Number  KRIVROY ROG ARMY BARRACKS AL-2
Coordinates 47 53N-033 15E

I. General (See Figure 4)

Krivoy ROG Army Barracks AL-2 is located southwest of Krivoy Rog approximately 3.5 nm west of Krivoy Rog Army Barracks AL-1. The installation consists of a barracks and quarters area, a barracks and bivouac area, a vehicle and equipment storage area, a vehicle maintenance facility, a tank park, a training facility (subcaliber firing ranges), two support areas, and a probable ammunition storage area (not shown on graphics).

II. Building Analysis (by Functional Area - See Figures 4 and 5)


a. Barracks and Quarters Area

<u>ITEM</u>	<u>FUNCTION</u>
1.	Quarters buildings
2.	Barracks
3.	Administration building (U-shaped)
4.	Support building (T-shaped)
5.	Support buildings (2)
6.	Support building
7.	Support building
8.	Support building
9.	Support building
10.	Support building
11.	Support building
12.	Support building
13.	Support building
14.	Support buildings (2)



25X1

b. Barracks and Bivouac Area

<u>ITEM</u>	<u>FUNCTION</u>	<u>DIMENSIONS</u>
15.	Administration/barracks buildings	2@ 170' X 40'
16.	Barracks	
17.	Barracks	120' X 40'

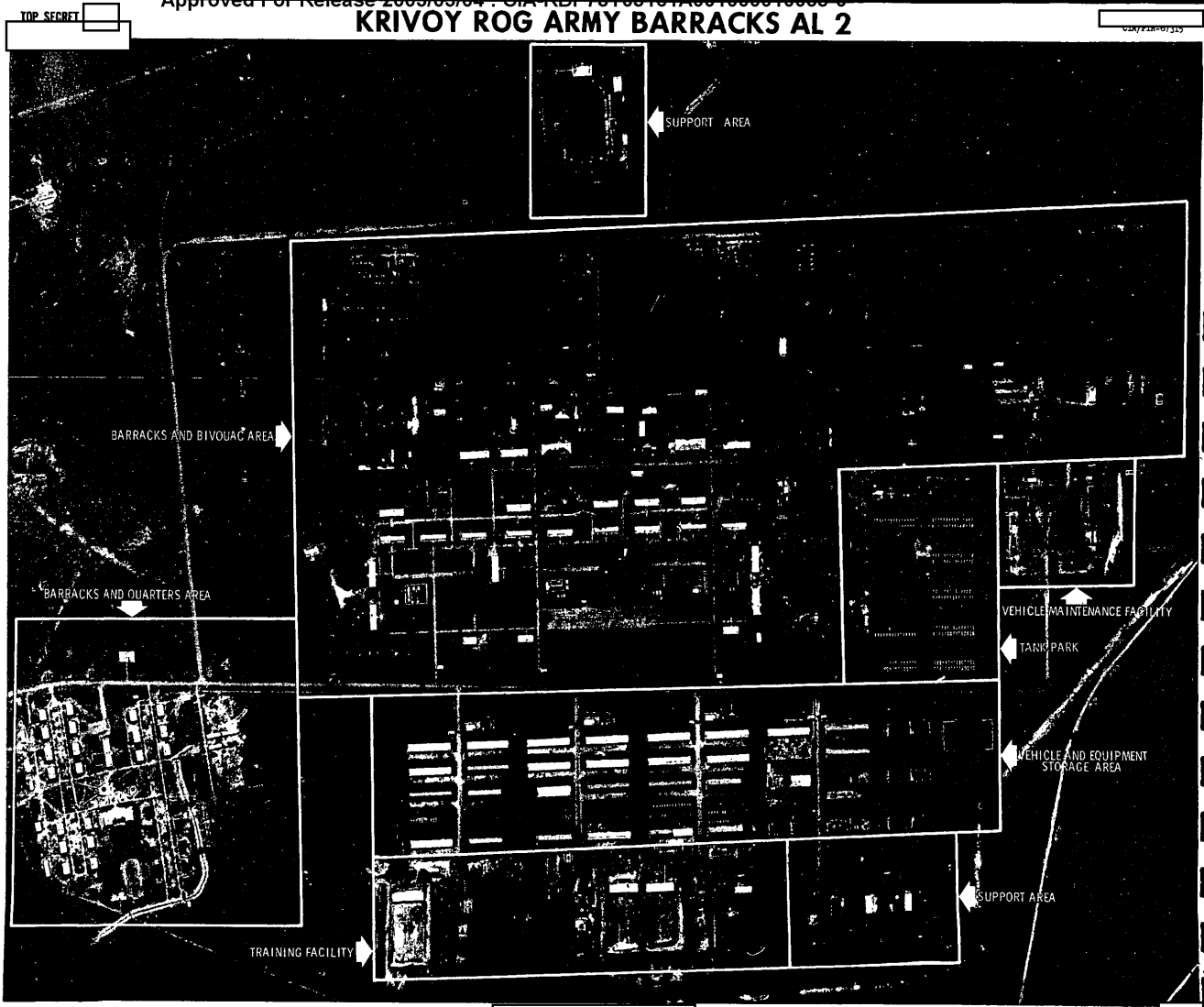
25X1

25X1



TOP SECRET

Approved For Release 2003/03/04 : CIA-RDP78T05161A001000010035-0
KRIVOY ROG ARMY BARRACKS AL 2



TOP SECRET

TOP SECRET

FIGURE 4

TOP SECRET

TOP SECRET

KRIVOY ROG ARMY BARRACKS AL 2

Approved For Release 2003/03/04 : CIA-RDP78T05161A001000010035-0

CIA/PIC-07/343

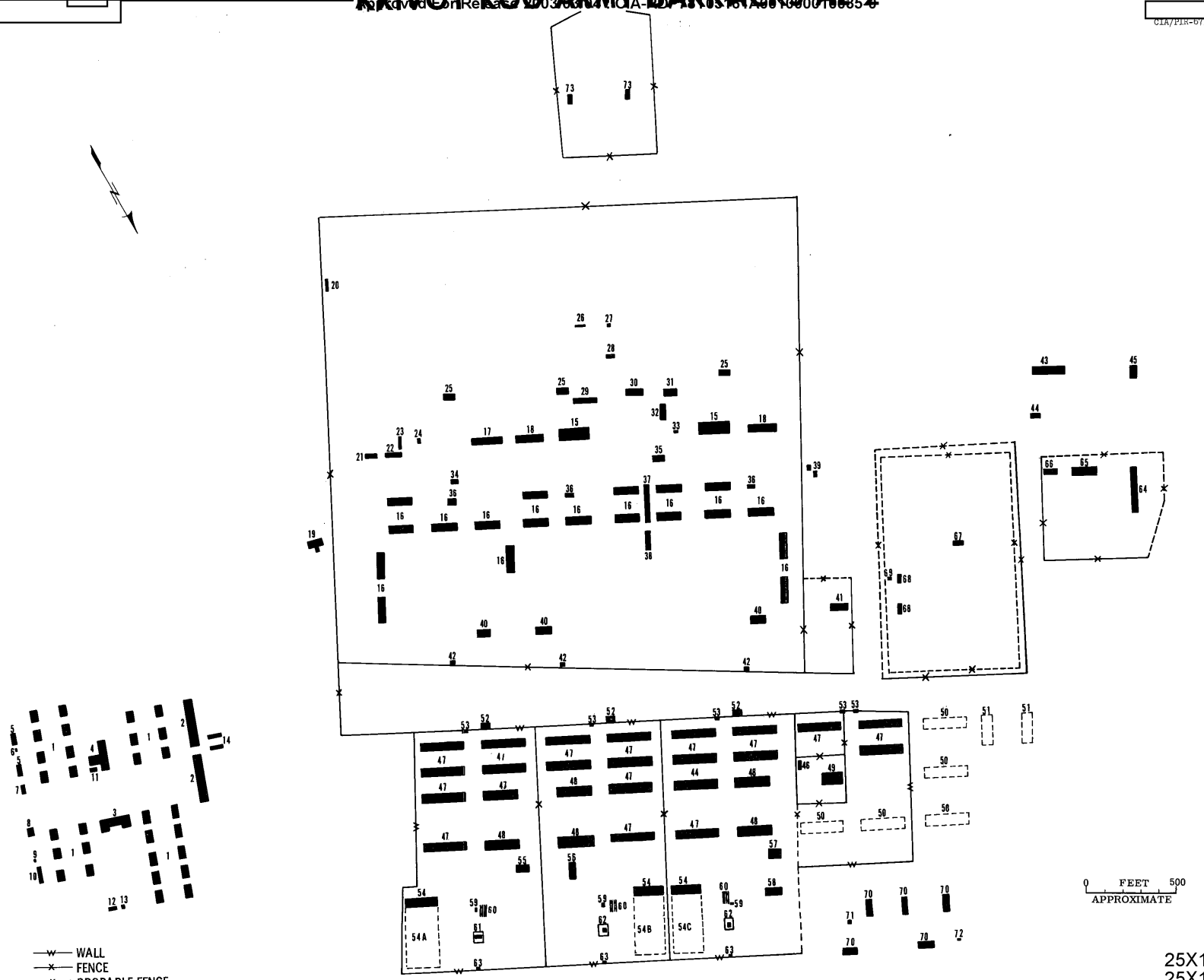


FIGURE 5

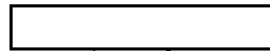
Approved For Release 2003/03/04 : CIA-RDP78T05161A001000010035-0

TOP SECRET

25X1



TOP SECRET



CIA/PIR-67315

25X1

CIA IMAGERY ANALYSIS DIVISION

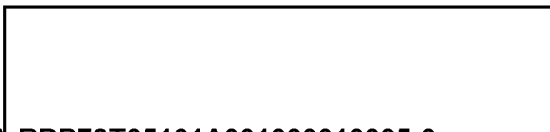
<u>ITEM</u>	<u>FUNCTION</u>	<u>DIMENSIONS</u>
18.	Barracks	2@ 155' X 40'
19.	Support building	
20.	Support building	
21.	Support building	
22.	Support building	
23.	Support building	
24.	Support building	
25.	Support buildings (3)	
26.	Support building	
27.	Support building	
28.	Support building	
29.	Support building	
30.	Support building	
31.	Support building	
32.	Support building	
33.	Support building	
34.	Support building	
35.	Support building	
36.	Support buildings (3)	
37.	Support building	
38.	Support building	
39.	Support buildings (2)	
40.	Support buildings (3)	
41.	Support building	
42.	Gatehouses (3)	
43.	Support building	
44.	Support building	
45.	Support building	

c. Vehicle and Equipment Storage Area

<u>ITEM</u>	<u>FUNCTION</u>	<u>DIMENSIONS</u>
46.	Support building	
47.	Vehicle sheds	21@ 245' X 45'
48.	Vehicle sheds	6@ 190' X 60'
49.	Vehicle shed	115' X 65'
50.	Building foundations	
51.	Building foundations	
52.	Guard houses (3)	
53.	Gatehouses (5)	



TOP SECRET



25X1


25X1

TOP SECRET

25X1


CIA IMAGERY ANALYSIS DIVISION

d. Training Facility (Subcaliber Firing Ranges)

<u>ITEM</u>	<u>FUNCTION</u>	<u>DIMENSIONS</u>
54.	Range support buildings	
54. (A, B & C)	Subcaliber firing ranges	
55.	Possible maintenance building	
56.	Possible maintenance building	
57.	Possible maintenance building	
58.	Support building	
59.	Support buildings (3)	
60.	Vehicle service ramps (3)	
61.	Secured support building	
62.	Secured support buildings (2)	
63.	Support buildings (3)	

25X1

e. Vehicle Maintenance Facility

<u>ITEM</u>	<u>FUNCTION</u>	<u>DIMENSIONS</u>
64.	Possible barracks	
65.	Maintenance building	
66.	Possible maintenance building	

25X1

f. Tank Park

<u>ITEM</u>	<u>FUNCTION</u>	<u>DIMENSIONS</u>
67.	Support building	
68.	Support buildings (2)	
69.	Support building	

g. Support Areas

<u>ITEM</u>	<u>FUNCTION</u>	<u>DIMENSIONS</u>
70.	Support buildings (5)	
71.	Support building	
72.	Support building	
73.	Support buildings at athletic field (2)	

TOP SECRET

25X1

CIA IMAGERY ANALYSIS DIVISION

h. Probable Ammunition Storage Area

This area is located adjacent to the barracks and bivouac area on the SW edge of the installation and includes 7 probable ammunition storage buildings.

III. Security (See Figure 5)

The east part of the barracks and bivouac area and the athletic field are singly secured by fences. The tank park is probably secured by two fences and the vehicle maintenance facility is probably secured by a single fence. The vehicle and equipment storage area and the training facility are jointly secured by a wall with fences internally securing probable tank regiment facilities. No security is observed at the barracks and quarters area.

IV. Changes in Facilities

The tank park and 3 support buildings have been added since



V. Vehicles and Pieces of Equipment Observed* (by Functional Area - See Figure 4)

Tank Park

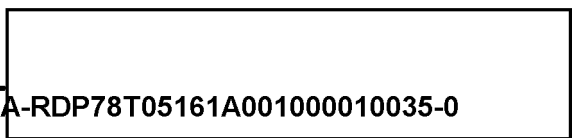
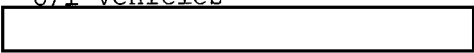
- 52 Probable heavy tanks/assault guns (canvas covered)
- 179 Medium tanks/assault guns (canvas covered)
- 4 Possible tank recovery vehicles (canvas covered)
- 3 Probable van trucks
- 4 U/I vehicles

Vehicle and Maintenance Facility

- 1 Probable medium tank/assault gun
- 6 Probable cargo trucks
- 16 U/I vehicles

Vehicle and Equipment Storage Area

- 3 Probable heavy tanks/assault guns (canvas covered)
- 56 Medium tanks/assault guns (canvas covered)
- 10 Probable medium tanks/assault guns (canvas covered)
- 2 Cargo trucks
- 3 Possible cargo trucks
- 8 U/I vehicles



TOP SECRET

CIA/PIR-67315

25X
25X

CIA IMAGERY ANALYSIS DIVISION

REFERENCES



25X

MAPS

U.S. Air Target Chart Series 200, Sheet O250-4HL, 2nd Edition, May 1963 (SECRET).

DOCUMENTS

NPIC. [redacted] Soviet Military Order of Battle-Kiyev M.D., December 1964 (TOP SECRET [redacted])

NPIC. [redacted] Soviet Military Order of Battle-Kiyev M.D., January 1965 (TOP SECRET [redacted])

REQUIREMENT

C-RR6-83,624

CIA/IAD PROJECT

31230-6

TOP SECRET

25X

TOP SECRET



TOP SECRET