

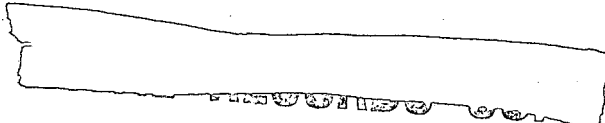
TOP SECRET



IMAGERY  
ANALYSIS  
DIVISION

PIR

PHOTOGRAPHIC INTELLIGENCE REPORT



DAIREN (LU-TA) SHIPYARD, DAIREN, CHINA



Declass Review by NIMA/DOD



25X1

25X1

CIA/PIR 67286



DATE JUNE 1966

COPY

PAGES 3

GROUP 1  
Excluded from automatic  
downgrading and declassification

TOP SECRET

25X1

Approved For Release 2003/03/04 : CIA-RDP78T05161A001000010006-2

Approved For Release 2003/03/04 : CIA-RDP78T05161A001000010006-2

Approved For Release 2003/03/04 : CIA-RDP78T05161A001000010006-2

RECORD COPY	COPY NO.	PUB. DATE	LOCATION	MASTER	DATE RECEIVED	LOCATION											
DISPOSITION DATE(S)				STOCK	MINIMUM	MAXIMUM											
CUT TO COPIES	0	DATE	7/72	CUT TO COPIES	DATE	COPIES DESTROYED											
CUT TO COPIES		DATE		CUT TO COPIES	DATE												
CUT TO COPIES		DATE		MASTER	DATE												
DATE			RECEIVED OR ISSUED			NUMBER OF COPIES			DATE			RECEIVED OR ISSUED			NUMBER OF COPIES		
MO.	DAY	YR.	REC'D	ISS'D	BAL	MO.	DAY	YR.	REC'D	ISS'D	BAL	REC'D	ISS'D	BAL			
9	5	68			8						8						
8	3	72															
			Dist. Unit #41-48														
			<i>Dest #41-48</i>						<i>OWK6</i>								

Approved For Release 2003/03/04 : CIA-RDP78T05161A001000010006-2

K1

Approved For Release 2003/03/04

TOP SECRET RDP78T05161A001000010006-2

25X1

[Redacted]

CIA/PIR-67286

CIA IMAGERY ANALYSIS DIVISION

DAIREN (LU-TA) SHIPYARD

DAIREN, CHINA

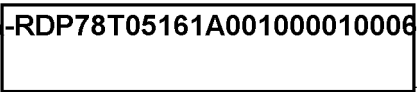
[Redacted]

K1

[Redacted]

25X1

~~TOP SECRET~~



CIA/PIR-67286

CIA IMAGERY ANALYSIS DIVISION

SHIPYARD : DAIREN (LU-TA) SHIPYARD  
LOCATION : DAIREN, CHINA  
GEO COORDS: 38-56N 121-39E

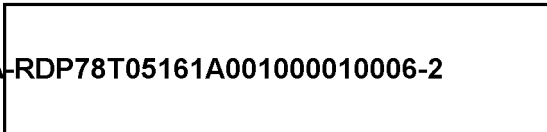


KEY TO ANNOTATIONS

- 1. Unidentified vessel (LOA 210'). See annotation 10, 25X1
- 2. Gordyy Class ODD (LOA approx 380'). See annotation 9, 25X1
- 3. Merchant vessel (LOA approx 440'). See annotation 8, 25X1
- 4. Shanghai Class PTF construction area. Several unidentified probable hull sections are visible in this area. See annotations 1, 2, and 3, Figure 2, and annotation 5, 25X1
- 5. Possible "W/R" Class SS (visible waterline length approx 245'). See annotation 2, Figure 1, X1
- 6. Possible "S-1" Class SS (visible waterline length approx 260'). See annotation 3, Figure 1, X1
- 7. Unidentified vessel (LOA approx 210'). See annotation 3, 25X1
- 8. Shanghai Class PTF outfitting area (LOA of visible vessels approx 130'). See annotation 5, Figure 1, and annotation 6, 25X1
- 9. Ex US LST-1 Class LST (LOA approx 330'). See annotation 2, 25X1
- 10. Probable new class tanker (LOA approx 350'). See annotation 1, 25X1
- 11. Probable new class tanker under construction (could not be measured). See annotation 4, X1

NOTE: All measurements have been made by the CIA/IAD project analyst.

~~TOP SECRET~~



TOP SECRET

Release 2003/03/04 : CIA-RDP78T05186A00100010006-2  
DAIREN, CHINA  
38-56N 121-39E

- 1
- 2
- 3
- 4
- 5
- 6
- 8
- 9
- 10
- 11

FIGURE 1

Approved

Release 2003/03/04 : CIA-RDP78T05186A00100010006-2 TOP SECRET

25X

**TOP SECRET**

**TOP SECRET**