

TOP SECRET

25X1



IMAGERY
ANALYSIS
DIVISION

PIR

PHOTOGRAPHIC INTELLIGENCE REPORT

POSSIBLE TACTICAL SURFACE-TO-SURFACE
MISSILE SUPPORT FACILITY
UZHGOROD, USSR

Declass Review by NIMA/DOD

[Redacted]

25X1

CIA/PIR 67265

[Redacted]

25X1

DATE APRIL 1966

COPY 4

PAGES 13

GROUP 1
Excluded from automatic
downgrading and declassification

TOP SECRET

25X1

25X1

Approved For Release 2003/03/04 : CIA-RDP78T05161A000900010071-2

Approved For Release 2003/03/04 : CIA-RDP78T05161A000900010071-2

Approved For Release 2005/03/04

~~TOP SECRET~~

CIA-RDP78T05161A000900010071-2

25X1

25X1

CIA/PIR-67265

CIA IMAGERY ANALYSIS DIVISION

25X1

POSSIBLE TACTICAL SURFACE-TO-SURFACE

MISSILE SUPPORT FACILITY

UZHGOROD, USSR (48 36N-022 21E)

- 1 -

25X1

25X1

Approved For Release 2005/03/04

~~TOP SECRET~~

CIA-RDP78T05161A000900010071-2

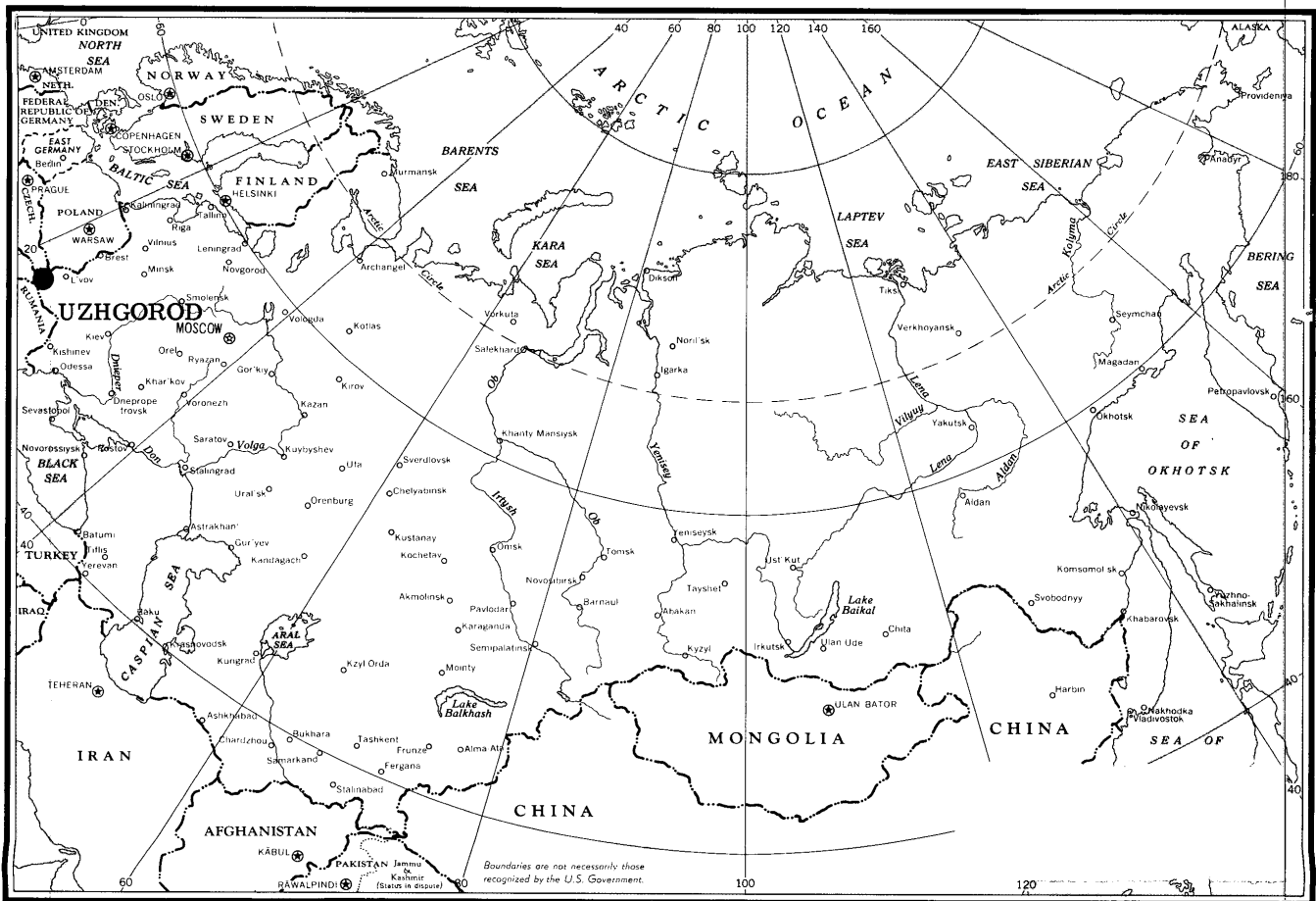


FIGURE 1

25X1

TOP SECRET

TOP SECRET

25X1

CIA/PIR-67265

Approved For Release

~~TOP SECRET~~

2005/03/04 : CIA-RDP78T05161A000900010071-2

25X1
25X1

CIA/PTR-0/205

CIA IMAGERY ANALYSIS DIVISION

25X1

PREFACE

25X1

A possible surface-to-surface tactical missile support facility is located 3 nm east of Uzhgorod¹. The possible support facility is located within an ammunition depot which has undergone extensive change [redacted]

25X1

25X1

Bunkers, bunkered buildings, a possible missile/warhead assembly and checkout area, new barracks, vehicle/equipment sheds, and a maintenance building were added between [redacted]. A rail spur was constructed from Uzhgorod and new security fences were also added between [redacted]. Possible SCUD missile support vehicles were observed on [redacted] photography.

25X1
25X1

[Large redacted block]

25X6

* 1. The installation is listed in the Bombing Encyclopedia as Uzhgorod Ammunition Depot Dravce, [redacted] located at 48 36 12N-022 21 52E.

25X1

~~TOP SECRET~~

Approved For Release 2005/03/04 : CIA-RDP78T05161A000900010071-2

[Redacted box]

25X1
25X1

25X1

25X1

25X1

FUNCTIONAL AREAS (FIGURE 2)

25X1

The possible missile/warhead assembly and checkout facility consists of a separately secured area containing one building and a hardstand with a 40 foot gantry crane. The internal security, crane, and hardstand bear resemblance to those observed at the surface-to-surface tactical missile support facility [redacted]

25X1

The possible fuel storage area consists of a possible pump house associated with possible underground fuel tanks along a looped road. The facility does not appear to be separately secured.



25X1

A vehicle/equipment storage and maintenance area is located adjacent to the east side of the barracks and administration area. The area consists of 4 vehicle/equipment storage buildings (see Figure 3), a maintenance building, and a support building. The maintenance building appears similar to the irregularly-shaped maintenance building in the barracks and administration area [redacted]. Most of the vehicles and equipment observed on [redacted] and more recent coverage have been located in this area.

25X1

The barracks and administration area consists of 6 barracks (see Figure 3), 8 quarters, an administration building, 2 probable vehicle sheds, a probable storage building, a possible messhall, a possible theater, a possible guardhouse, a probable guardhouse, and 5 support buildings. The personnel capacity has been periodically increased by the addition of new barracks.

The transloading area consists of a loop road adjacent to the railroad sidings. This area appears to be separately secured from the main depot area.

25X1

Vehicles and equipment

[redacted] is the only mission on which vehicles and equipment are discernible.

25X1

25X1

25X1
25X1

TOP SECRET

POSSIBLE TACTICAL SURFACE-TO-SURFACE MISSILE SUPPORT FACILITY

Approved For Release 2003/03/04 : CIA-RDP78T05161A000900010071-2

25X1



25X1

FIGURE 2
Approved For Release 2003/03/04 : CIA-RDP78T05161A000900010071-2

TOP SECRET

25X1
25X1

25X1

25X1

Vehicle/equipment storage and maintenance area

7 possible SCUD resupply transport trailers with prime movers
2 possible van trucks with trailers
Approximately 45 trucks

Vehicle park (adjacent to possible missile/warhead assembly
and checkout area)

2 possible SCUD resupply transport trailers with prime movers
12 possible van trucks

Barracks and administration area

Approximately 30 U/I vehicles
5 possible KRAZ-214 cargo trucks

Special storage area

2 U/I pieces of equipment

25X1

~~TOP SECRET~~

25X1

CIA/PIR-67265

25X1

CIA IMAGERY ANALYSIS DIVISION

25X1

BUILDING ANALYSIS (FIGURE 3)

25X1

NUMERICAL DESIGNATION

FUNCTION

NUMBER & DIMENSIONS

- | <u>NUMERICAL DESIGNATION</u> | <u>FUNCTION</u> | <u>NUMBER & DIMENSIONS</u> | |
|------------------------------|---|--------------------------------|-----|
| 1. | Ammunition storage buildings | | |
| 2. | Ammunition storage building | | |
| 3. | Probable ammunition storage buildings | | |
| 4. | Probable explosives storage buildings | | |
| | 1 support building (unrevetted) | | |
| 5. | Bunkered building | | |
| 6. | Bunker | | app |
| 7. | Bunkered building | | |
| 8. | Bunker | | app |
| 9. | Possible missile/warhead assembly and checkout building (with gantry crane on hardstand - 40' long) | | |
| 10. | Vehicle/equipment storage buildings | | |
| 11. | Support buildings | | |
| 12. | Maintenance building | | |
| 13. | 2 support buildings associated with possible underground fuel storage | | |
| 14. | Support building | | |
| 15. | Fuel storage (3 horizontal tanks) | | |
| 16. | Probable security building | | |
| 17. | Heat/power plant | | |
| 18. | Barracks | | |
| 19. | Quarters | | |
| 20. | 3 support buildings | | |
| 21. | Probable vehicle sheds (separately secured) | | |
| 22. | Probable storage building | | |
| 23. | Support building | | |
| 24. | Possible guard house | | |
| 25. | Support building | | |
| 26. | Possible messhall | | |
| 27. | Possible theater | | |
| 28. | Administration building | | |
| 29. | Probable guardhouse | | |
| 30. | Gatehouse | | |
| 31. | Probable storage building | | |
| 32. | Probable storage building | | |
| 33. | Support building | | |
| 34. | Support building | | |
| 35. | Support building | | |

~~TOP SECRET~~

25X1

25X1

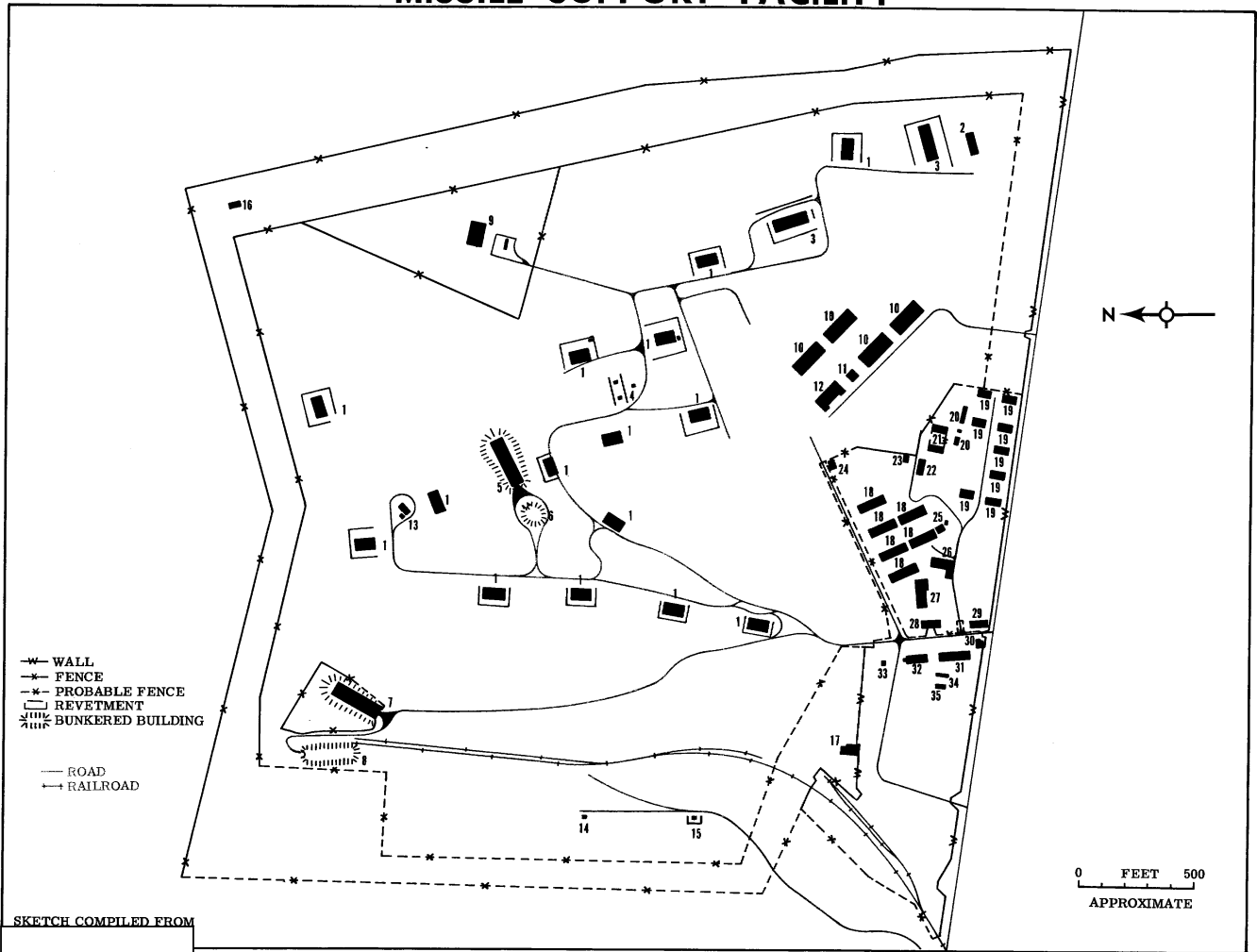
25X1
25X1

TOP SECRET

POSSIBLE TACTICAL SURFACE-TO-SURFACE MISSILE SUPPORT FACILITY

Approved For Release 2003/03/04 : CIA-RDP78T05161A000900010071-2

25X1



25X1

FIGURE 3

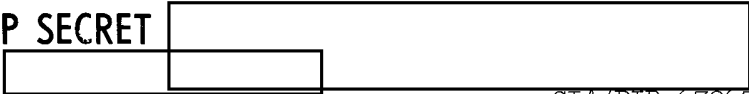
Approved For Release 2003/03/04 : CIA-RDP78T05161A000900010071-2

TOP SECRET

25X1
25X1



TOP SECRET



CIA/PIR-67265

CIA IMAGERY ANALYSIS DIVISION

25X1

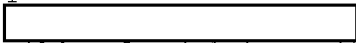
25X1

25X1

SECURITY (FIGURE 3)

The depot is entirely double secured. The north and east sides have a double fence, the west side is probably secured by 2 fences, and the south side, which faces the road, has a wall adjacent to the road and a probable inner fence.

The barracks and administration area appears to be separately secured from the depot as does the transloading facility, heat/power plant, and the probable conventional storage building area. The possible missile/warhead assembly and checkout area (numerical designation 9) is separately secured by a fence and one of the bunkered buildings (numerical designator 7) is also separately secured.

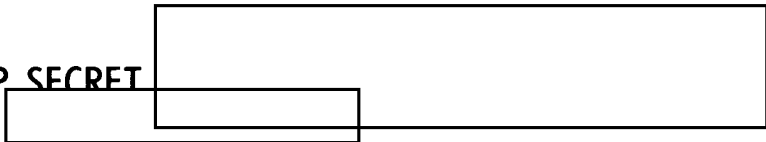
Additional security measures may exist but the lack of recent good quality photography precludes the identification of new external or internal security. Coverage  did reveal, however, that the vegetation was being thinned out between the perimeter fences in the north-west part of the installation.

25X1

25X1

25X1

TOP SECRET



25X1
25X1

[Redacted]

[Redacted]

CIA/PIR-67265

25X1

CIA IMAGERY ANALYSIS DIVISION

25X1

25X1

SEQUENCE OF CONSTRUCTION (FIGURE 4)

Photography [Redacted] revealed that the installation consisted of revetted ammunition storage buildings and a small support area.

New construction was observed on [Redacted] coverage. A rail spur between the depot and Uzhgorod was under construction. The possible missile/warhead assembly and checkout facility appeared under construction and the security around the facility was first observed. Ground scarring was discernible in the bunker areas. Four new barracks in the barracks and administration area had been added and the other construction in the area was observed.

25X1

Photography [Redacted] (Figure 2) revealed that construction of the bunkers, possible missile/warhead assembly and checkout facility, a possible fuel storage area, and the rail line had been completed. Two vehicle/equipment buildings and a maintenance building had also been built between [Redacted].

[Redacted] two additional vehicle/equipment buildings were constructed and photography of [Redacted] (Figure 3) revealed that 2 new barracks were added.

25X1

25X1

25X1

[Redacted]

25X1
25X1

[Redacted]

TOP SECRET

Approved For Release 2003/03/04

SEQUENCE OF CONSTRUCTION

CIA-RDP78T05161A000900010071-2

10071-2

CIA/PIR-67265 25X1

25X1

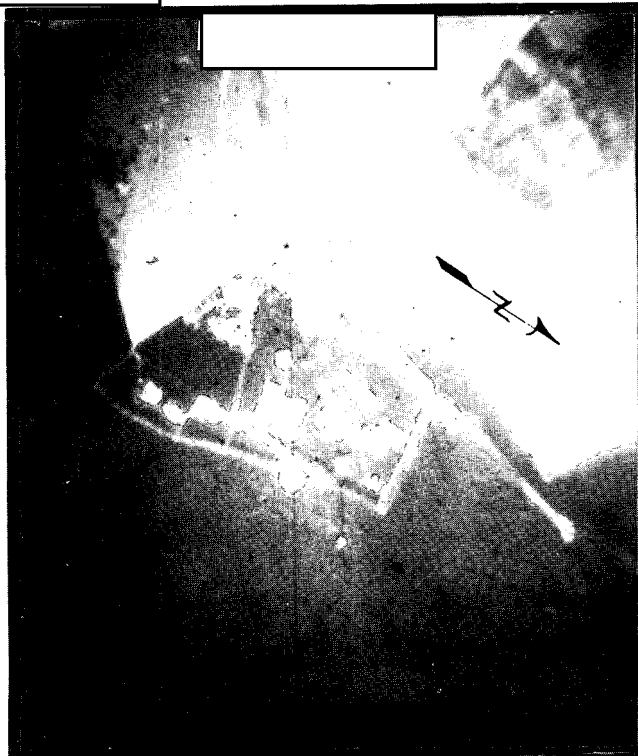
25X1

25X1

25X1

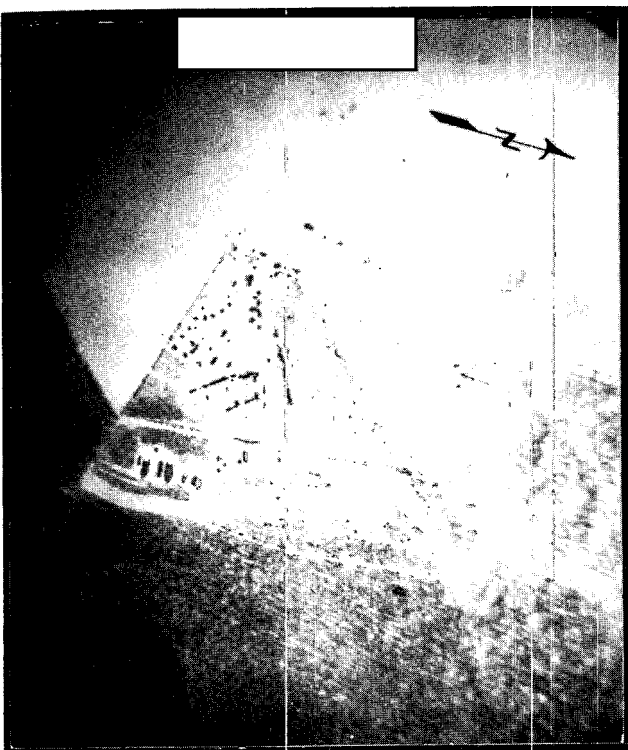


The installation at this date was comprised of the ammunition storage buildings and a small support area.



The rail line, possible missile/warhead assembly and checkout area, and bunkers are U/C. The 4 large barracks and other support buildings have been constructed.

25X1



25X1

25X1

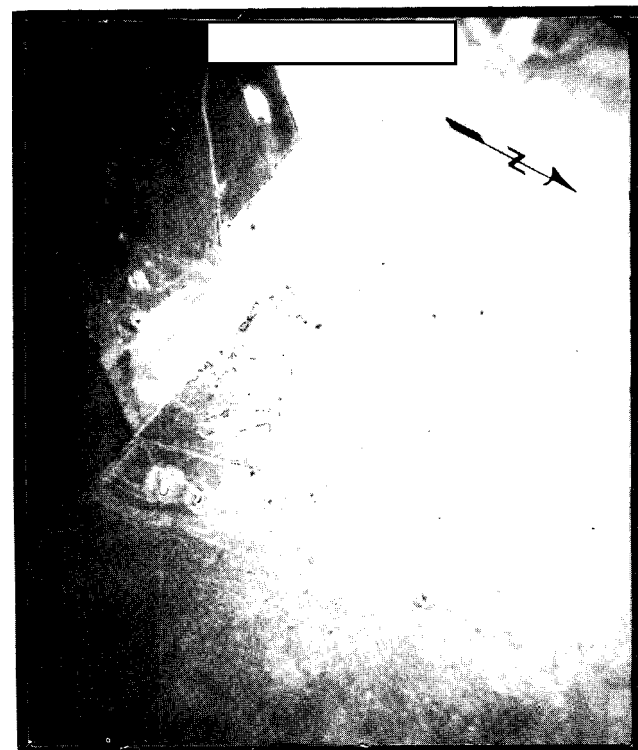
Between [redacted] two new vehicle/equipment sheds were added and the trees between the new security fences in the NW corner were thinned out.

25X1

25X1

25X1

25X1



Between [redacted] two new large barracks were added.

Approved For Release 2003/03/04 : CIA-RDP78T05161A000900010071-2

TOP SECRET

CIA IMAGERY ANALYSIS DIVISION

CIA/PIR-67265

25X1

REFERENCES



25X1

MAPS OR CHARTS

US Air Target Chart, Series 200, Sheet 0232-24HL, 2nd Edition, August 1963 (SECRET)

DOCUMENTS

CIA. PIC/JB-18/61, Probable Missile-Related Activity in Carpathian MD, USSR, March 1961 (TOP SECRET [redacted])

25X1
25X1



NPIC. R-813/64, Military Storage Site Near Uzhgorod, USSR, September 1964 (TOP SECRET [redacted])

NPIC. R-76B/64, Uzhgorod Ammunition Depot Dravce, Dravce, USSR, September 1964 (TOP SECRET [redacted])

25X1

25X1

Approved For Release

~~TOP SECRET~~

CIA-RDP78T05161A000900010071-2

CIA IMAGERY ANALYSIS DIVISION

CIA/PIR-67265

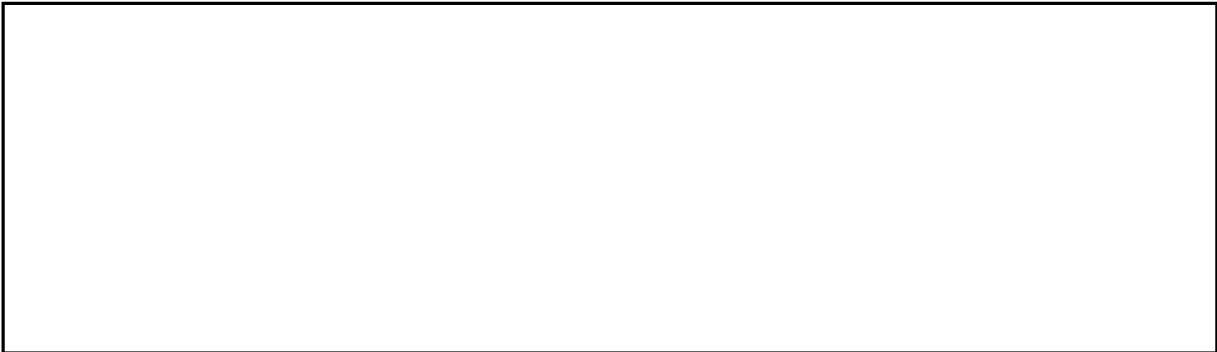
25X1

25X1

25X1

REFERENCES

DOCUMENTS



REQUIREMENT

C-RR6-83,386

CIA/IAD PROJECT

30886-6

25X1

25X1

Approved For Release 2003/03/04 : CIA-RDP78T05161A000900010071-2

Approved For Release 2003/03/04 : CIA-RDP78T05161A000900010071-2