

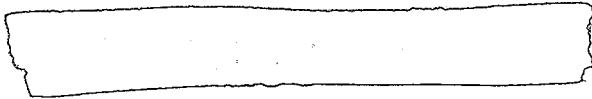
TOP SECRET



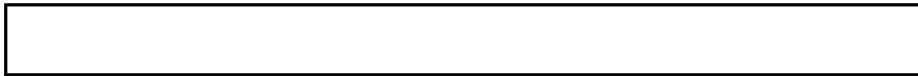
IMAGERY
ANALYSIS
DIVISION

PIR

PHOTOGRAPHIC INTELLIGENCE REPORT



WU-CHANG SHIPYARD, WU-CHANG, CHINA



25X1

Declass Review by NIMA/DOD



25X1

CIA/PIR 67247



25X1

DATE MARCH 1966

COPY

PAGES 3

TOP SECRET

GROUP 1
Excluded from automatic
downgrading and declassification

25X1

Approved For Release 2003/03/04 : CIA-RDP78T05161A000900010054-1

Approved For Release 2003/03/04 : CIA-RDP78T05161A000900010054-1

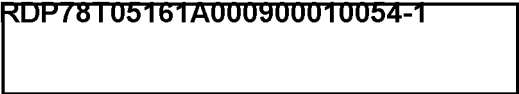
Approved For Release 2003/03/04 : CIA-RDP78T05161A000900010054-1

RECORD COPY	COPY NO.	PUB. DATE	LOCATION	MASTER	DATE RECEIVED	LOCATION							
DISSEMINATION DATE (C)				STOCK	MINIMUM	MAXIMUM							
CUT TO COPIES 0				DATE 7/72	CUT TO COPIES	DATE							
CUT TO COPIES				DATE	CUT TO COPIES	DATE							
CUT TO COPIES				DATE	MASTER	DATE							
DATE			RECEIVED OR ISSUED	NUMBER OF COPIES			DATE	RECEIVED OR ISSUED	NUMBER OF COPIES				
MO.	DAY	YR.		REC'D	ISS'D	BAL	MO.	DAY	YR.		REC'D	ISS'D	BAL
9	5	68	Dist. Unit #41-50	10		10							
8	3	72	Dist #41-50			0	W	K	G				

Approved For Release 2003/03/04 : CIA-RDP78T05161A000900010054-1

TOP SECRET

25X1



CIA/PIR-67247

CIA IMAGERY ANALYSIS DIVISION

25X1

WU-CHANG SHIPYARD

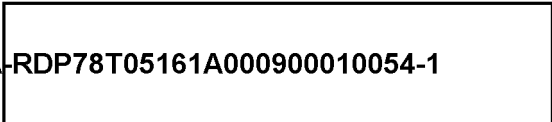
WU-CHANG, CHINA



25X1

TOP SECRET

25X1



TOP SECRET

25X

CIA/PIR-67247

25X1

CIA IMAGERY ANALYSIS DIVISION

SHIPYARD : WU-CHANG SHIPYARD
LOCATION : WU-CHANG, CHINA
GEO COORDS: 30-32N 114-17E



25X

KEY TO ANNOTATIONS

1. Possible "T-43" Class MSF (LOA approx 200').
The superstructure shape, profile, and location resemble superstructure characteristics of "T-43" units. See annotation 1,
2. Three unidentified objects on transverser.
3. Probable weather sheds (visible length approx 210').
These sheds are positioned ahead of a probable "W/R" Class SS on the same building way.
4. Probable "W/R" Class SS on building way (length of covering weather sheds approx 260').
The sail of this unit can be seen protruding from the weather sheds. Quality of photo coverage precludes positive identification of class. See annotation 2,
5. Possible "T-43" Class MSF moored outboard of the fitting-out barge (LOA approx 195').
This vessel may be the second unit originally seen on the number one (outboard) building way but observed to have been removed prior to
See annotation 3, and annotations 3 and 4,
6. Probable "W/R Class SS moored inboard of the fitting-out barge (visible waterline length approx 250').
The sail of this submarine is clearly visible. An unidentified object of similar length was berthed in this position on see annotation 4,

25X

25X1

25X1

25X
25X

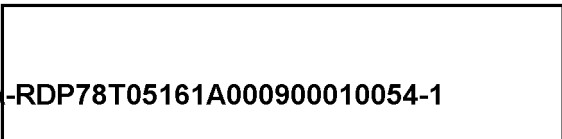
25X1

25X

NOTE: All measurements have been made by the CIA/IAD project analyst.

25X

TOP SECRET



X1

X1

TOP SECRET

Approved For Release 2003/03/04 : CIA-RDP78T05161A000900010054-1

WU-CHANG, CHINA
30-32N 114-17E

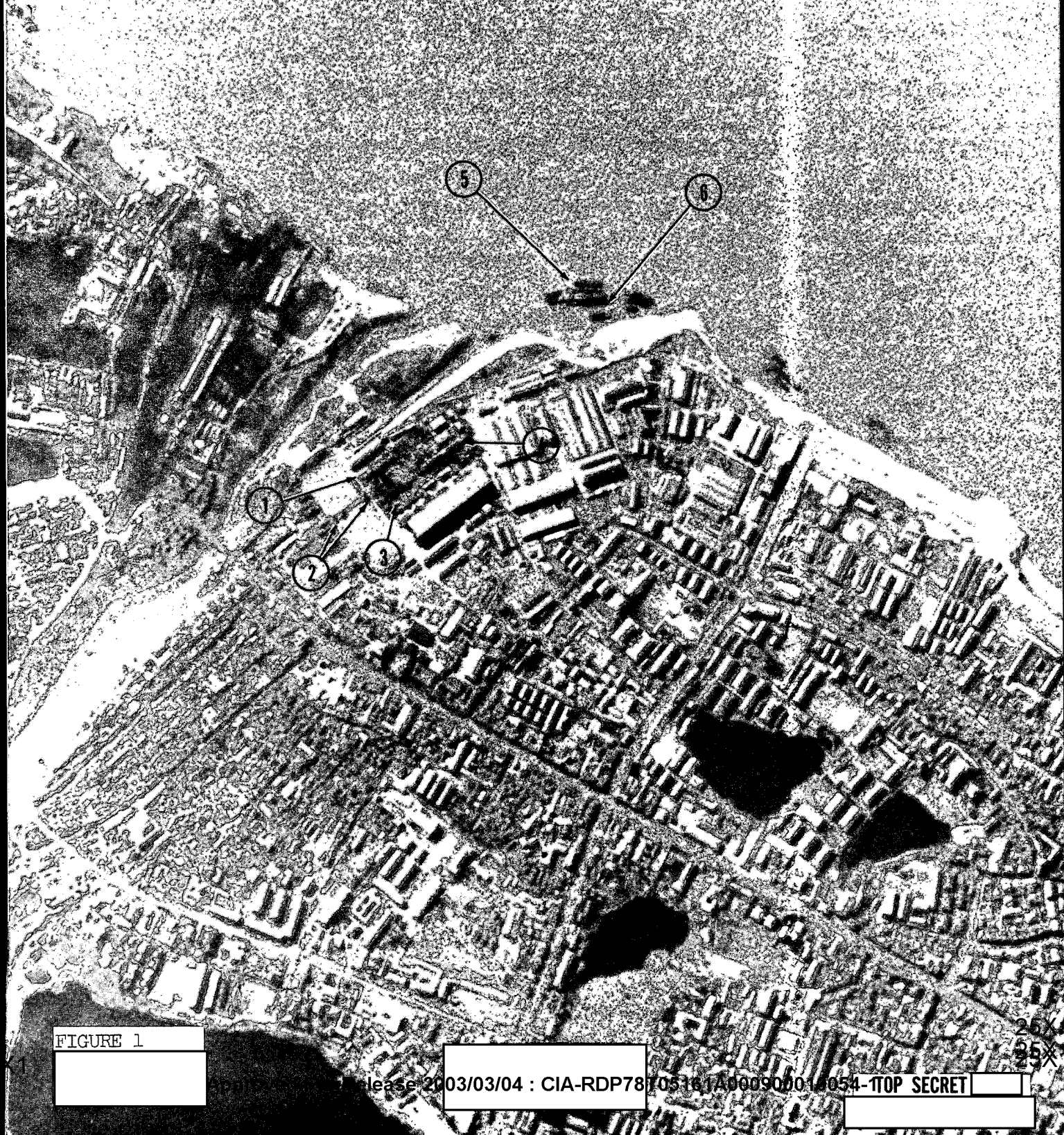
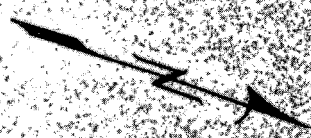


FIGURE 1

Approved For Release 2003/03/04 : CIA-RDP78T05161A000900010054-1

TOP SECRET

25X

TOP SECRET

TOP SECRET