

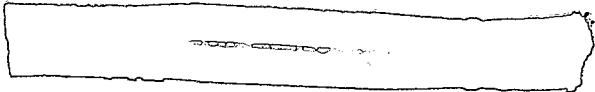
TOP SECRET



IMAGERY  
ANALYSIS  
DIVISION

PIR

PHOTOGRAPHIC INTELLIGENCE REPORT



TACTICAL MISSILE EQUIPMENT

TBILISI ORDNANCE DEPOT AND MACHINE PLANT

USSR

Declass Review by NIMA/DOD



25X1

CIA/PIR 67229



25X1

DATE MARCH 1966

COPY

PAGES 6

GROUP 1  
Excluded from automatic  
downgrading and declassification

TOP SECRET

25X1

Approved For Release 2003/03/04 : CIA-RDP78T05161A000900010036-1

Approved For Release 2003/03/04 : CIA-RDP78T05161A000900010036-1



TOP SECRET

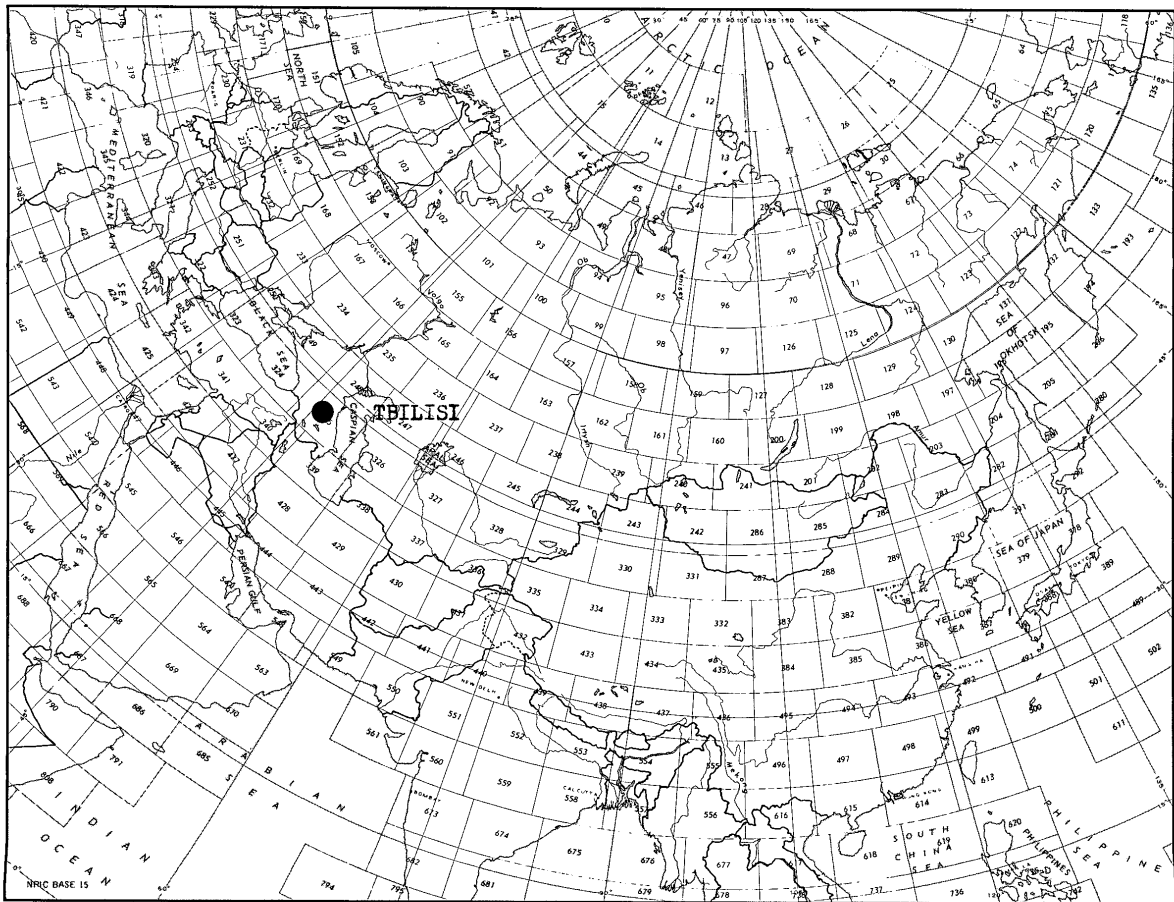
CIA/PIR-67229

CIA IMAGERY ANALYSIS DIVISION

25X1

TACTICAL MISSILE EQUIPMENT  
TBILISI ORDNANCE DEPOT AND MACHINE PLANT  
USSR

TOP SECRET



25X1

TOP SECRET

25X1

FIGURE 1

25X1

TOP SECRET

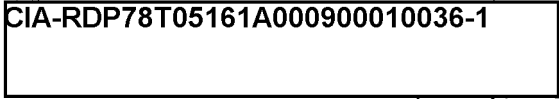
25X1

25X1

CIA/PIR-67229



TOP SECRET



25X1

CIA/PIR-67229

CIA IMAGERY ANALYSIS DIVISION

25X1

TACTICAL MISSILE EQUIPMENT  
TBILISI ORDNANCE DEPOT AND MACHINE PLANT, USSR



41 42N-044 49E

25X1

PREFACE

The purpose of this report is to identify the tactical missile and related support equipment observed in the Tbilisi Ordnance Depot and Machine Plant on

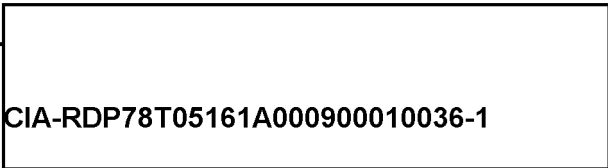
25X1

A complete report of this installation with the functional analysis of the buildings is provided in CIA/PIR-67009.

25X1

\* The ordnance depot is carried under Tbilisi Munitions Storage, and the machine plant under Tbilisi Ordnance and Machine Plant Ordzhonikidze.

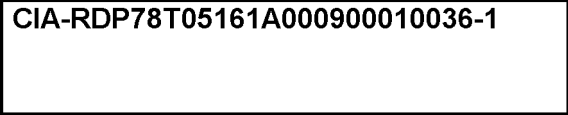
25X1



25X1

TOP SECRET

TOP SECRET



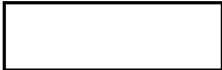
CIA IMAGERY ANALYSIS DIVISION

CIA/PIR-67229

25X1

SUMMARY

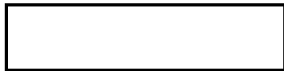
The following tactical missile and related vehicles and equipment have been identified in this installation:



(See Figure 2)

- 10 Probable SCUD resupply transport trailers with prime movers.
- 12 Possible SCUD resupply transport trailers with prime movers.
- 2 Possible SCUD cannister transport trailers with/prime movers.
- 1 Suspect "A frame" crane.
- 3 Probable Kraz-214 cargo trucks with 3 possible END TRAY radars.
- 7 Possible FROG resupply transport trailers with prime movers.

25X1



- 11 Possible SCUD missile transport trailers with prime movers.
- 8 Unidentified probable missile transport trailers with prime movers.

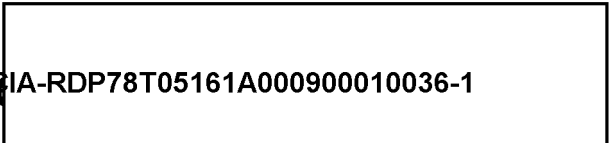
25X1

Numerous van trucks, cargo trucks and unidentified vehicles were also observed in this installation on [redacted]. It is not possible to determine if these vehicles are related to the tactical missile equipment.

25X1

Antiaircraft artillery and field artillery pieces were also observed in this installation on [redacted]. Twenty probable 130 mm field guns were identified [redacted].

25X1



25X1

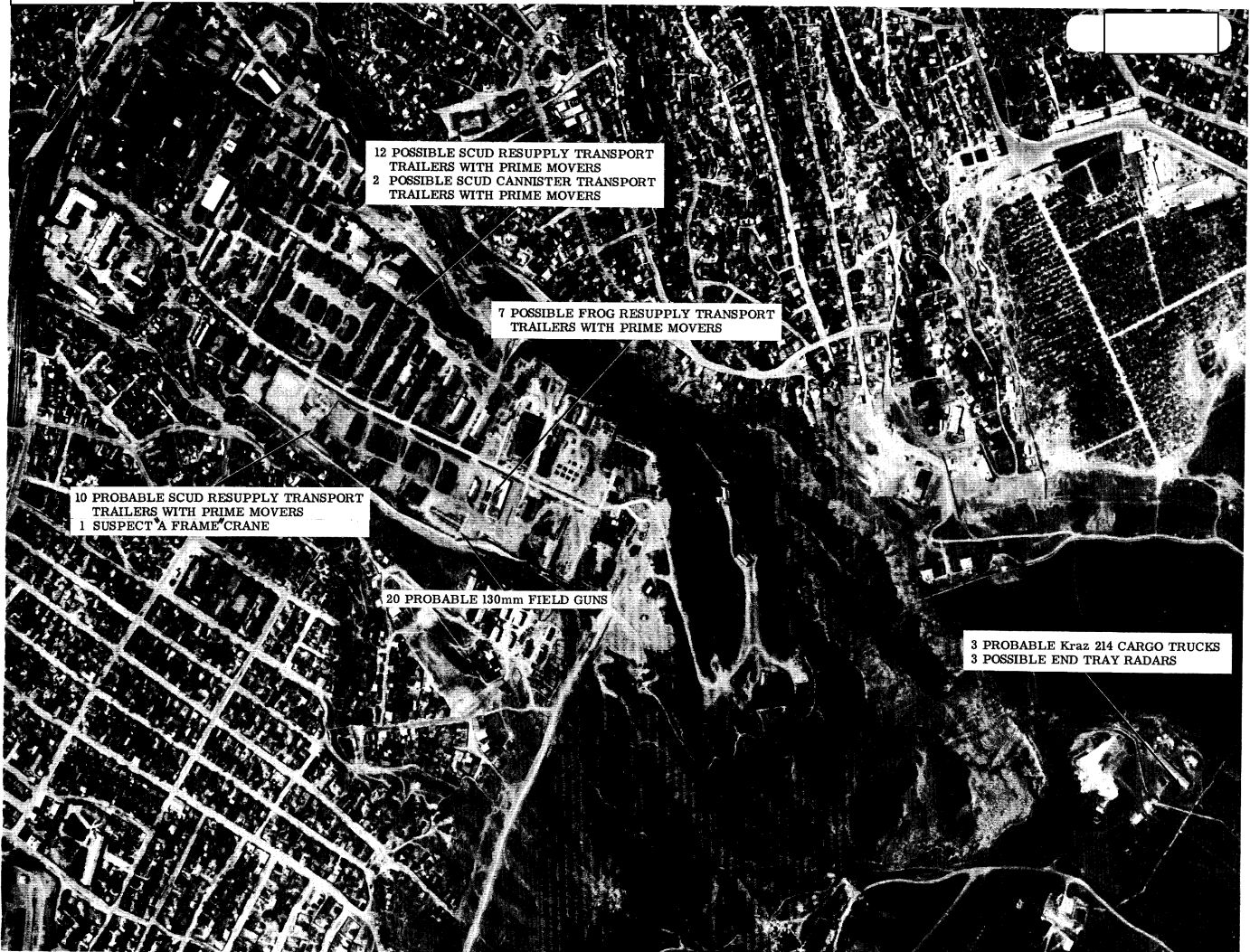
TOP SECRET

25X1  
25X1

TOP SECRET

Approved For Release 2003/03/04 : CIA-RDP78T05161A000900010036-1

25X1



25X1

Approved For Release 2003/03/04 : CIA-RDP78T05161A000900010036-1

Figure 2

TOP SECRET

25X1  
25X1

TOP SECRET

CIA IMAGERY AN

CIA/PIR-67229

25X1

REFERENCES

25X1



MAPS AND CHARTS

U.S. Air Target Chart Series 200, Sheet 0325-12HL, 2nd Edition, June 1964, (SECRET).

25X1

CIA [redacted] 3747.1 Town Plan Tbilisi, April 1963, (SECRET).

DOCUMENTS

CIA/PIR-67009 Selected Soviet Military Storage Areas, USSR (TOP SECRET [redacted])

25X1

25X1



NPIC. [redacted] Soviet Military Order of Battle, Trans Caucasus, MD August 1965, (TOP SECRET [redacted])

25X1

REQUIREMENT

25X1

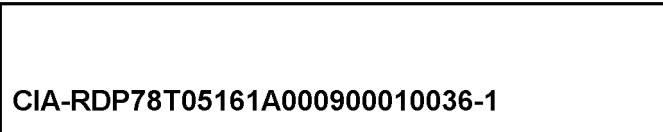
C-RR6-83,387

CIA/IAD PROJECT

30885-6

25X1

TOP SECRET





Approved For Release 2003/03/04 : CIA-RDP78T05161A000900010036-1  
*PIR 67228/66*

**TOP SECRET**

**TOP SECRET**