

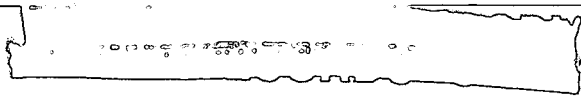
TOP SECRET



IMAGERY
ANALYSIS
DIVISION

PIR

PHOTOGRAPHIC INTELLIGENCE REPORT



SELECTED MILITARY INSTALLATIONS

CHANG HSIN TIEN (PEI-PING AREA), CHINA

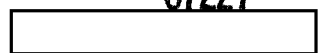
39 49N-116 11E

Declass Review by NIMA/DOD



25X1

CIA/PIR 67227



25X1

DATE MARCH 1966

COPY 90

PAGES 21

GROUP 1
Excluded from automatic
downgrading and declassification

TOP SECRET

25X1

Approved For Release 2003/03/04 : CIA-RDP78T05161A000900010035-2

Approved For Release 2003/03/04 : CIA-RDP78T05161A000900010035-2

TOP SECRET

CIA/PIR-67227

CIA IMAGERY ANALYSIS DIVISION

25X1

SELECTED MILITARY INSTALLATIONS

CHANG HSIN TIEN (PEI-PING AREA), CHINA

39 49N-116 11E

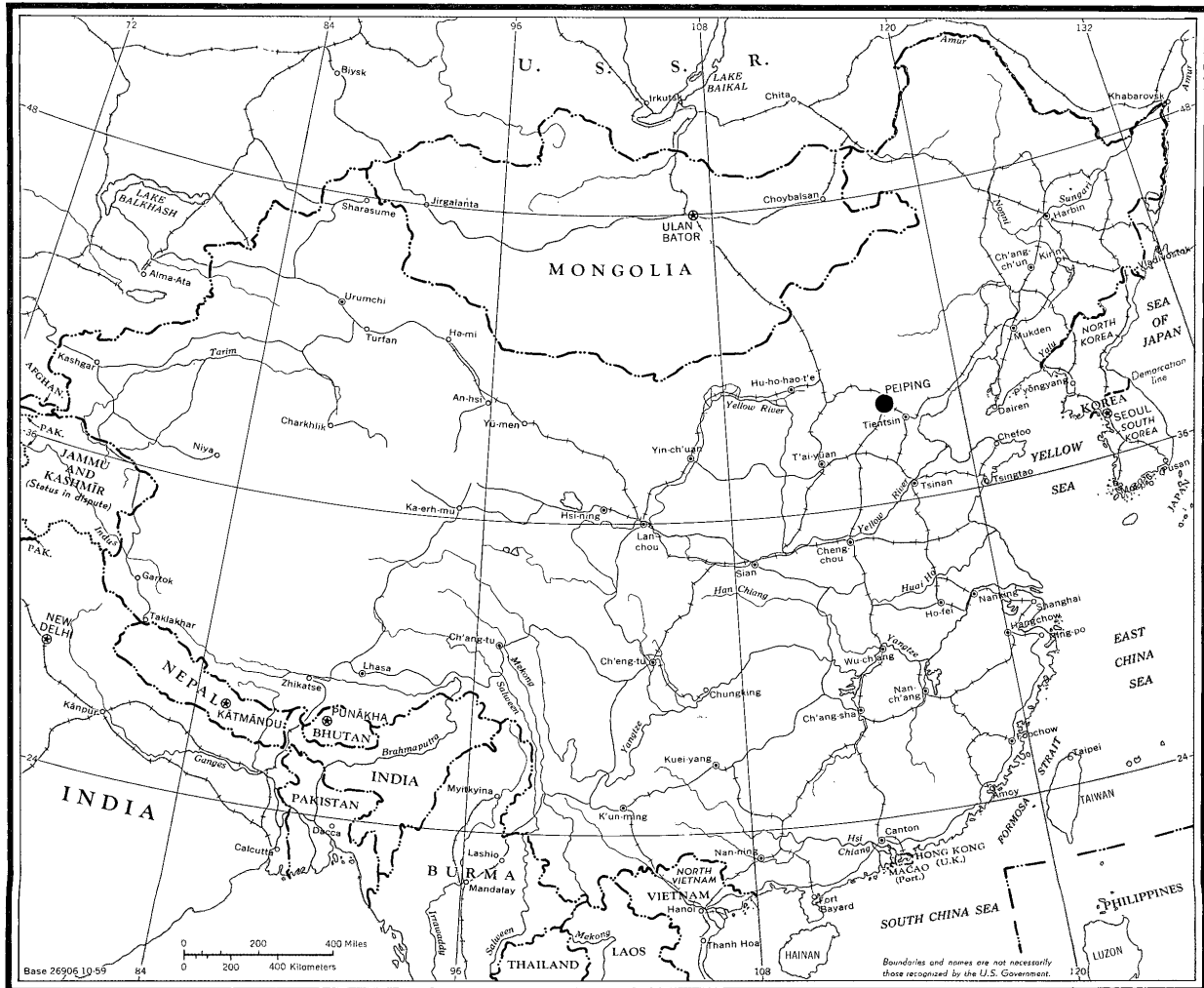
TOP SECRET

Figure 1

25X1

TOP SECRET

25X1



25X1

TOP SECRET

25X1

25X1

CIA/PIR-67227

TOP SECRET

CIA/PIR-67227

CIA IMAGERY ANALYSIS DIVISION

25X1

PREFACE

This report concerns three military installations in the Pei-Ping area that are associated with armored activity. The Pei-Ching Missile Development and Production Center is located adjacent to one of the installations, but it is not included within this report.

There are two CCA armored divisions reported in the Pei-Ping area. The 1st Armored Division is reported to be in the general vicinity of the areas described in the text of this report, and the 4th Armored Division is reported to be in the Nankou area approximately 20 nm NNW of Pei-Ping (See Reference Page). Good quality photography that would permit the identification of equipment is not currently available for the Nankou area, however, the photography that is available indicates that extensive armored activity is present in that area.

Measurements were only made of the vehicle storage sheds and maintenance buildings. All measurements are approximate and were compiled by CIA/IAD project analyst.

TOP SECRET

~~TOP SECRET~~

CIA IMAGERY ANALYSIS DIVISION

CIA/PIR-67227

25X1

The following alphabetical designators are used to delineate functional areas within military installations.

- A. Billeting area
- B. Vehicle storage/maintenance
- C. General storage area
- D. Ammunition storage
- E. Miscellaneous (hospitals, prisons, POL, personnel training facilities and unidentified facilities)
- F. Small arms range
- G. Driver training area
- H. Support
- J. Tank/assault gun range
- K. Flat trajectory range
- L. Subcaliber range
- M. APC range
- N. Combined arms range
- P. Artillery training area
- Q. Infantry training area
- R. Special or unidentified area

- NOTE: 1. The absence of one or more alphabetical designators indicates that those functional areas were not observed at that particular installation.
2. Lower case letters (i.e., Ba) are used to delineate more than one area of a particular functional category.

~~TOP SECRET~~

X1
X1

TOP SECRET

SELECTED MILITARY INSTALLATIONS CHANG HSIN TIEN (PEI-PING AREA), CHINA

Approved For Release 2003/03/04 : CIA-RDP78T05161A000900010035-2



1. PEI-CHING ARMY BKS/CHANG HSIN TIEN NW
2. PEI-CHING ORDANCE DEPOT/CHANG HSIN TIEN
3. PEI-CHING ARMY BKS/CHANG HSIN TIEN SW
& PEI-CHING 1st ARMORED SCHOOL
4. PEI-CHING MISSILE DEVEL. & PROD. CENTER
CHANG HSI

Pei-Ping 7 nm

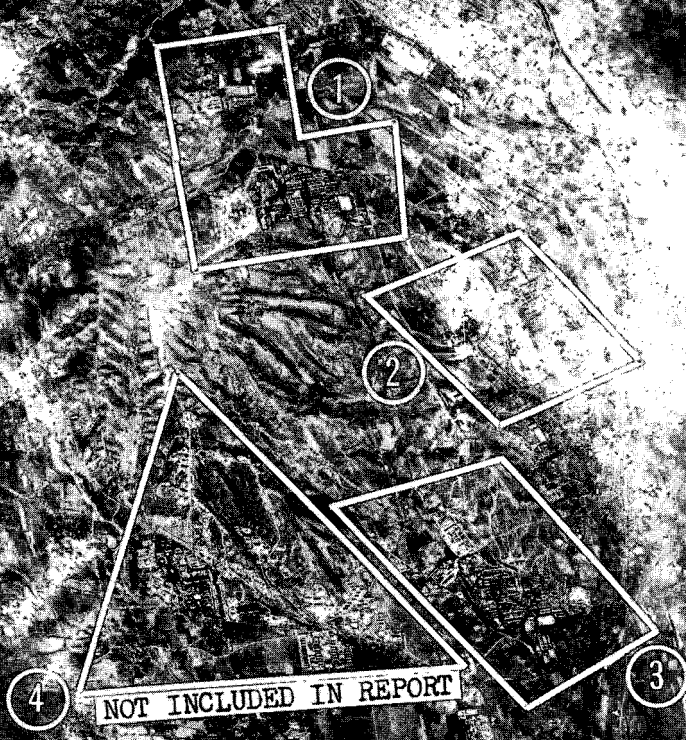


Figure 2

Approved For Release 2003/03/04 : CIA-RDP78T05161A000900010035-2

TOP SECRET

TOP SECRET

25X1

CIA/PIR-67227

CIA IMAGERY ANALYSIS DIVISION

25X1

Ea. Unidentified support area (Figure 4)

This area is secured and contains 16 buildings of varying sizes and shapes. The area may function as a billeting area.

Eb. Athletic and parade field (Figure 4)

Area appears well kept and in active use.

Ec. General support area (Figure 5)

A large miscellaneous area containing an athletic field, basketball court, gardens, 10 storage/support buildings, 5 possible barracks, and one possible messhall building.

Ed. General support area (Figure 5)

This area contains two support buildings and an empty swimming pool.

La. Subcaliber firing range (Figure 4)

This area contains a subcaliber firing range and 4 possibly associated support buildings. The maximum range is approximately 560 feet.

Lb. Subcaliber firing range (Figure 4)

A subcaliber firing range that is probably inactive since the construction of the water test facility in area Ra. The maximum range is approximately 700 feet.

Lc. Probable subcaliber firing range (Figure 4)

Located within area "B" is a small probable subcaliber firing range with a maximum range of approximately 170 feet. One small support building is located in the area.

Ld. Subcaliber firing range (Figure 5)

A subcaliber firing range with shed covered firing positions and a maximum range of approximately 170 feet. The shed covering the firing positions has an addition near the center that is possibly used for storage and support.

TOP SECRET

25X1

TOP SECRET

25X1

CIA IMAGERY ANALYSIS DIVISION

CIA/PIR-67227

25X1

Le. Subcaliber firing range (Figure 5)

A subcaliber firing range with 2 support buildings, a probable moving target capability, and a maximum range of approximately

25X1

Lf. Same as "Le" (Figure 5)

Lg. Same as "Ld" except support shed does not have addition (Figure 5)

Lh. Subcaliber firing range (Figure 5)

A subcaliber firing range with shed-covered firing positions and an approximate length of 985 feet.

Li. Subcaliber firing range (Figure 5)

A subcaliber firing range with 2 small support buildings, probable moving target runs at approximately 660 and 1,700 feet, and numerous other possible stationary and moving targets at varying distances.

Ra. Probable snorkel water test facility for tanks (Figure 4)

This area contains a probable snorkel water test facility for tanks. The water test basin is approximately 560' X 140' and is constructed of concrete. Vehicle entrances are located at both ends of the facility and probable rapid drain ditches and water level indicators are located on the north side of the basin. Comparative photography indicates that construction of this facility was initiated between

25X1

Rb. Unidentified facility (Figure 4)

25X1

This area appears to contain 5 ramps with varying grades.

SUMMARY

This installation has undergone few physical changes since photography of [redacted] The major changes noted are the improvement of the sub-caliber firing range facilities (Figure 5), the construction of the water test facility (Figure 4), and minor building additions.

25X1

TOP SECRET

25X1
25X1

25X1

TOP SECRET

Approved For Release 2000/07/04 : CIA-RDP78-03414A000300010035-2
PEI-CHING ARMY BARRACKS / CHANG HSIIN-TIEN NW

K1

25X1

Pei-Ping SAM Site B26

See Figure 5

See Figure 4

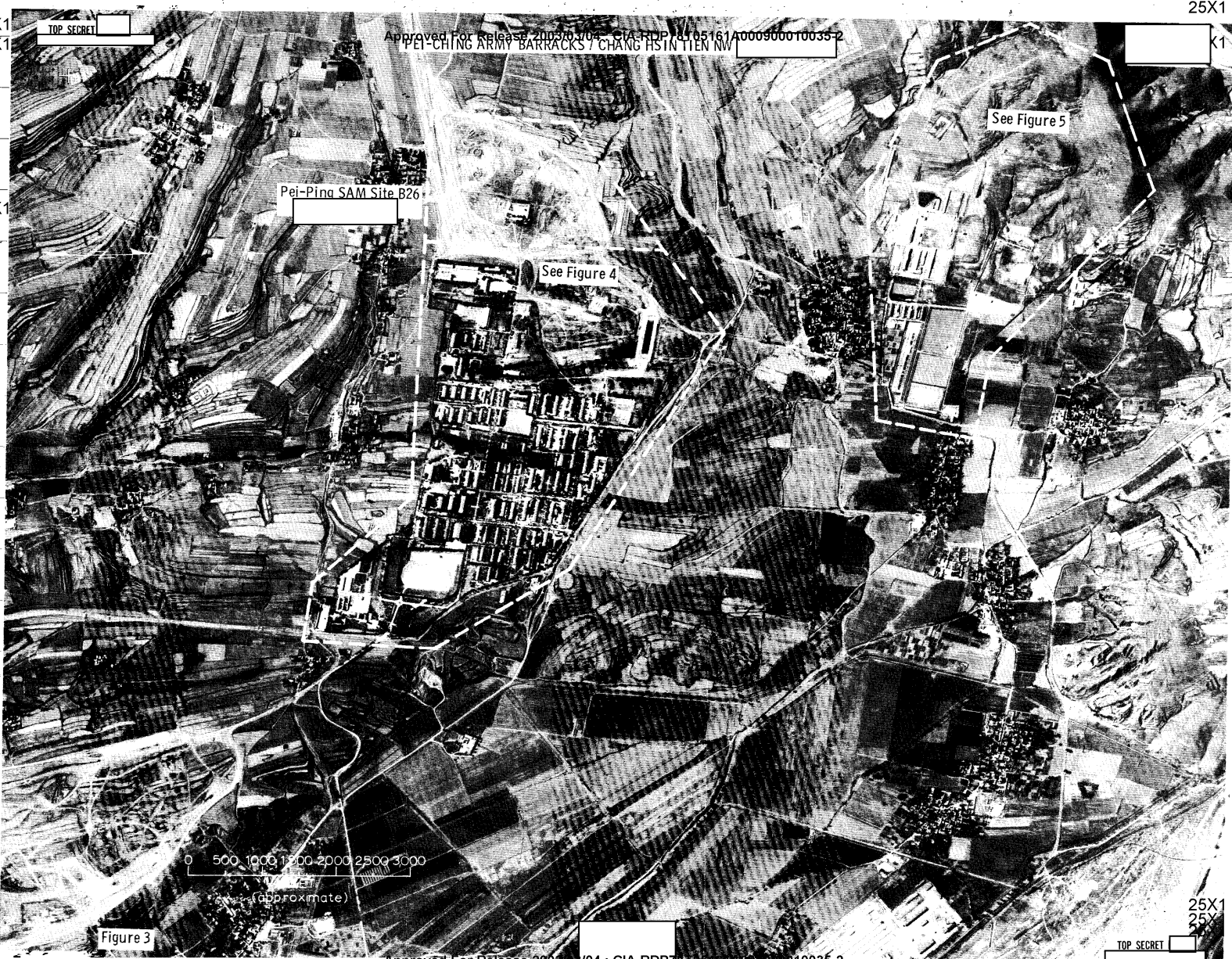
0 500 1000 1500 2000 2500 3000
(Approximate)

Figure 3

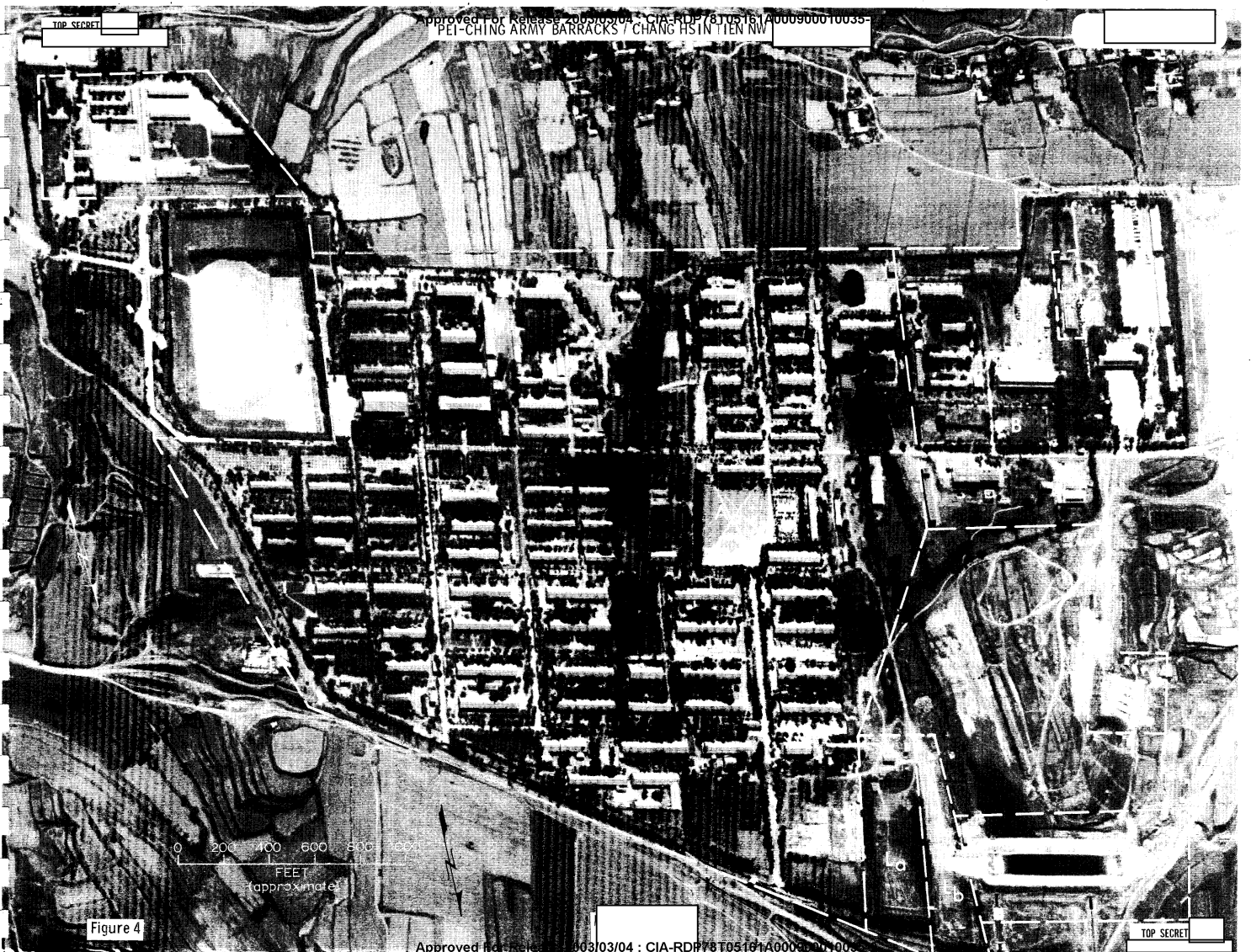
25X1
25X1

TOP SECRET

Approved For Release 2000/07/04 : CIA-RDP78-03414A000300010035-2



25X1
25X1



25X1

25X1
25X1

25X1
25X1

TOP SECRET

Approved For Release 2000/08/07 : CIA-RDP78T00767A00090006
PEI-CHING ARMY BARRACKS / CHANG HSIN TIEN NW

25X1



Figure 5

TOP SECRET

25X1
25X1
25X1

TOP SECRET

25X1

CIA IMAGERY ANALYSIS DIVISION

CIA/PIR-67227

25X1

PEI-PING ORDNANCE DEPOT/CHANG HSIN TIEN

(FIGURE 6)

39 50N-116 11E

25X1

FUNCTIONAL AREAS

A. Billeting and support area (Figure 7)

- 30 Possible barracks buildings
 - 4 Multistory probable barracks buildings
 - 3 Probable messhall buildings
 - 3 Probable administration buildings
- 46 Miscellaneous storage/support buildings and sheds

The entire area is secured by a wall.

B. Vehicle storage and maintenance area (Figure 7)

- 9 Vehicle storage and maintenance buildings
 - @ 180' X 40'
 - @ 175' X 50'
 - (Drive-through with roof monitor)....1@ 120' X 50'
- 4 Probable vehicle storage/maintenance building.....2@ 125' X 40'
 - @ 150' X 50'
 - @ 245' X 50'
- 16 Small support buildings and sheds
- 6 Vehicle maintenance racks

The entire area is secured by a fence.

Ea. Probable ordnance depot (Figure 6)

This installation is rail served and contains probable machine shops, storage sheds, barracks, and support buildings. The relationship of this area to the remainder of the installation is probably remote.

Eb. Personnel training facilities (Figure 7)

This area contains an athletic/parade field and a probable basketball court.

G. Tracked vehicle driver training/vehicle test area (Figure 6)

This area contains an active driver training/vehicle test course.

25X1

TOP SECRET

TOP SECRET

25X1

25X1

CIA IMAGERY ANALYSIS DIVISION

CIA/PIR-67227

25X1

SUMMARY

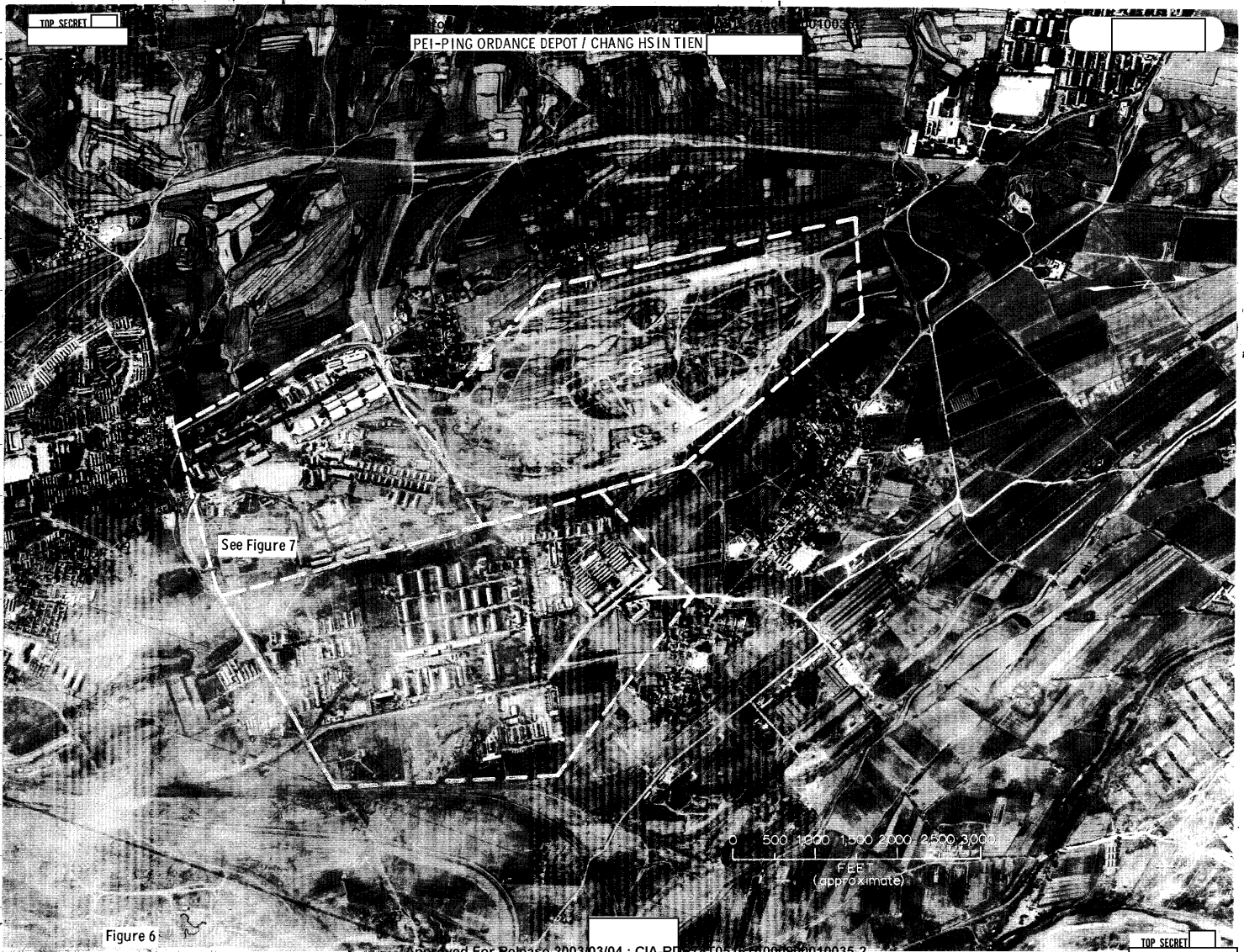
Comparative photographic coverage from [redacted] indicates that few changes have occurred at this installation during that time period. The medium level of activity has remained relatively constant during the same time period. The single most significant pattern found in this installation is in area B, Figure 7---this area contains a typical tank/assault gun storage and maintenance area.

Area Ea, Figure 6, is probably not directly related to areas A, B, and G. These areas; A, B, and G, appear to function as direct support elements of a tank/assault gun unit. This tank/assault gun unit may function as an engineer test component whose function is to evaluate the capabilities of new or modified tank/assault guns that are possibly produced in the areas shown on Figures 8 and 9.

TOP SECRET

25X1

25X1
25X1



25X1
25X1

TOP SECRET

PEI-PING ORDNANCE DEPOT / CHANG HSIN TIEN

004003

See Figure 7

0 500 1000 1500 2000 2500 3000
 FEET
 (approximate)

Figure 6

TOP SECRET

25X1
25X1

25X1
25X



PEI-PING ORDNANCE DEPOT / CHANG HSINTIEN

TOP SECRET

25X1

0 200 400 600 800
FEET
(approximate)

Figure 7

TOP SECRET

25X

25X1
25X1

TOP SECRET

25X1

CIA/PIR-67227

CIA IMAGERY ANALYSIS DIVISION

25X1

PEI-CHING ARMY BARRACKS/CHANG HSIN TIEN SW ([REDACTED])
AND
PEI-CHING 1ST ARMORED SCHOOL/CHANG HSIN TIEN
(FIGURE 8)
39 48N-116 10E

25X1

FUNCTIONAL AREAS

Aa. Billeting area (Figure 9)

- 10 Probable barracks buildings
- 1 Possible messhall building
- 10 Small storage/support buildings and sheds
- 2 Probable basketball courts
- 1 Parade/athletic field

Ab. Billeting area (Figure 9)

- 7 Probable barracks buildings
- 1 Probable messhall building ("L" shaped)
- 1 Storage/support building

B. Vehicle/equipment storage and maintenance area (Figure 9)

- 9 Vehicle/equipment storage and maintenance buildings

- 5@ 160' X 45'
- 1@ 160' X 55'
- (Drive through with roof monitor)...1@ 100' X 45'
- (With roof monitor)...1@ 90' X 60'
- 1@ 85' X 40'

- 4 Small support buildings/sheds
- 4 Vehicle maintenance ramps
- Vehicles--49 tanks/assault guns
- 17 trucks

E. General support area (Figure 9)

This area contains approximately 30 buildings of varying sizes and shapes. The building functions probably include storage, support, administration, messing, classrooms, and possibly limited billeting.

G. Tracked vehicle test and driver training area (Figure 8)

This area contains an active tracked vehicle test/driver training course.

25X1

TOP SECRET

TOP SECRET

25X1

CIA IMAGERY ANALYSIS DIVISION

CIA/PIR-67227

25X1

SUMMARY

The Pei-Ching Army Barracks/Chang Hsin Tien and the Pei-Ching 1st Armored School/Chang Hsin Tien are located adjacent to the Yung-Ting Machinery Plant, and it is also located in close proximity to the Pei-Ching Missile Development Center and a locomotive plant (See Figure 8). The close areal relationship of the army barracks and armored school to the Yung-Ting Machinery Plant indicates that the machinery plant may be engaged in the modification or production of armored equipment.

Portions of the Yung-Ting Machinery Plant may house military personnel assigned to the armored school, however, a distinction between plant facilities and military facilities cannot adequately be determined. A combined civilian and military effort is probably functioning throughout the plant area.

In each of the three major installations included in this report (See Figure 2) there is a vehicle/equipment storage and maintenance area. Each of these areas is similiar in design i.e., each has vehicle maintenance ramps in front of a drivethrough maintenance building with a roof monitor, a second maintenance building with a roof monitor (usually nearby), and a number of vehicle storage sheds--usually located to the rear of the drive-through maintenance building. This building arrangement appears to be typical in most of the Chinese armored installations.

TOP SECRET

25X

25X1
25X1



25X1

25X1

25X1

25X1
25X1
25X1

25X1-
25X1

TOP SECRET

Approved For Release

200900010035-2
ARMY BARRACKS / CHANG HSIN TIEN SW
PEI-CHING 1st ARMORED SCHOOL / CHANG HSIN TIEN

25X1

25X1



YUNG-TING MACHINERY PLANT (618 FACTORY)

0 200 400 600 800 1,000
FEET
(approximate)

Figure 9

TOP SECRET

25X1

25X1

25X1

Approved For Release

TOP SECRET



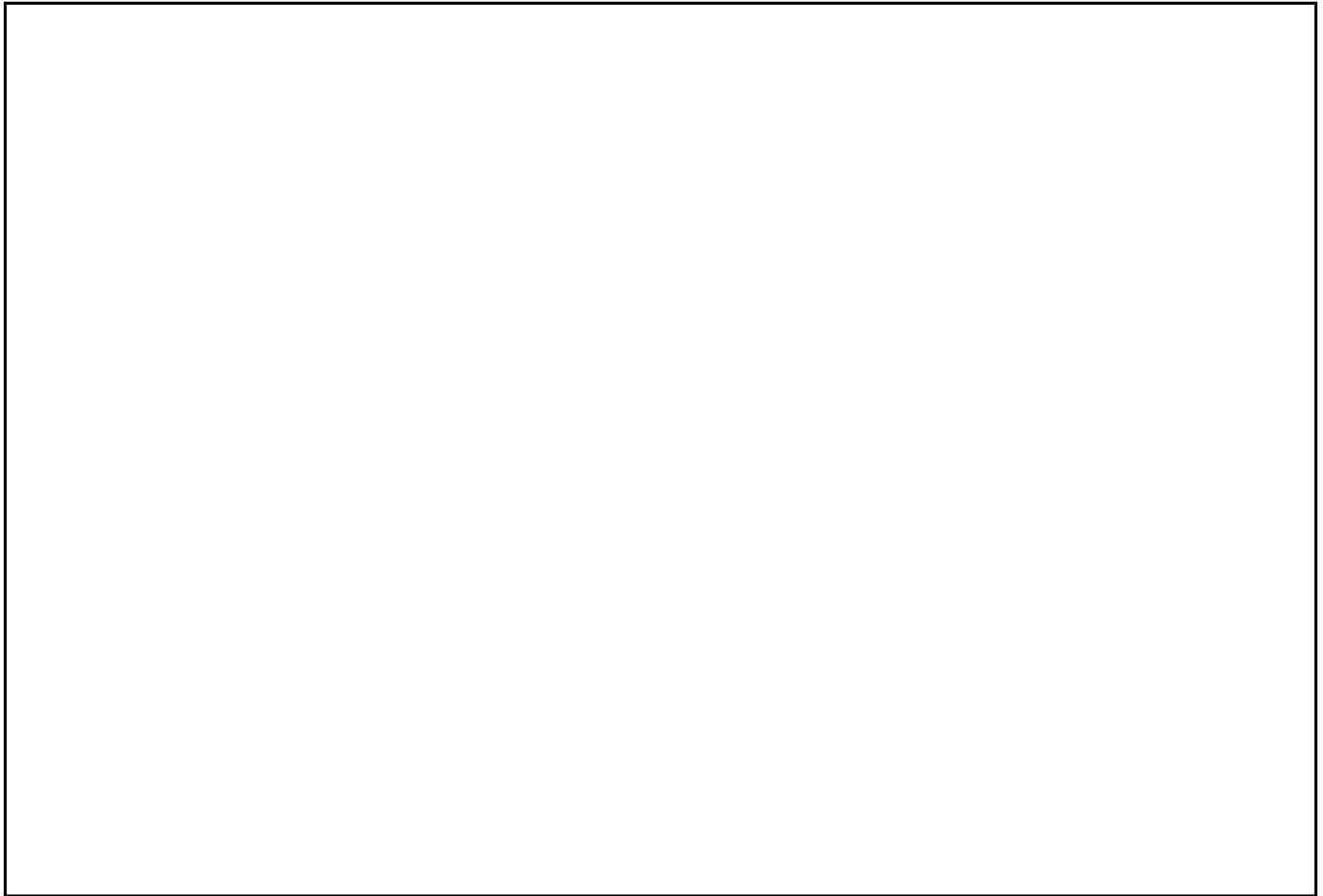
CIA/PIR-07227

25X1

CIA IMAGERY ANALYSIS DIVISION

REFERENCE

25X1



MAPS OR CHARTS

ACIC. ONC-G-10, 2nd, September 1962 (U)

DOCUMENT

DIA, Order of Battle Chinese Communist Army, 1 April 1965 (SECRET)



25X1

25X1

TOP SECRET



TOP SECRET

CIA/PIR-67227

CIA IMAGERY ANALYSIS DIVISION

25X1 REQUIREMENT

25X1

CIA/ORR C-RR4-82,079

CIA/IAD PROJECT

31005-1

25X1

TOP SECRET

TOP SECRET

TOP SECRET