

SECRET

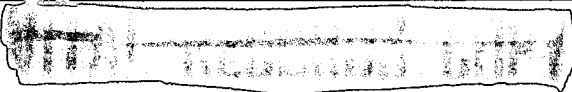
25X1



IMAGERY  
ANALYSIS  
DIVISION

PIR

PHOTOGRAPHIC INTELLIGENCE REPORT



TUNG-LANG SHIPYARD  
KUANG-CHOU, CHINA



25X1

Declass Review by NIMA/DOD

25X1

CIA/PIR 67204

DATE FEBRUARY 1966

GROUP 1  
Excluded from automatic  
downgrading and declassification

SECRET

WARNING

This document contains information affecting the national defense of the United States, within the meaning of Title 18, sections 793 and 794, of the U.S. Code, as amended. Its transmission or revelation of its contents to or receipt by an unauthorized person is prohibited by law.

**SECRET**



CIA/PIR-67204

25X1

CIA IMAGERY ANALYSIS DIVISION

TUNG-LANG SHIPYARD

KUANG-CHOU, CHINA



25X1

25X1

- 1 -

**SECRET**



**SECRET**



CIA/PIR-67204

25X1


CIA IMAGERY ANALYSIS DIVISION

SHIPYARD : TUNG-LANG SHIPYARD  
LOCATION : KUANG-CHOU, CHINA  
GEO COORDS: 23-04N 113-15E



25X1

KEY TO ANNOTATIONS

- 1. Probable ZEMLESES SC-8 Class dredge (could not be measured). See annotation 6, 

NOTE: This coverage is included to provided chronological continuity.

25X1

**SECRET**



25X1

25X1

SECRET

Approved For Release 2003/03/04 : CIA-RDP78T05161A000900010013-6

TUNG-LANG SHIP YARD  
KUANG-CHOU, CHINA  
23-04N 113-15E

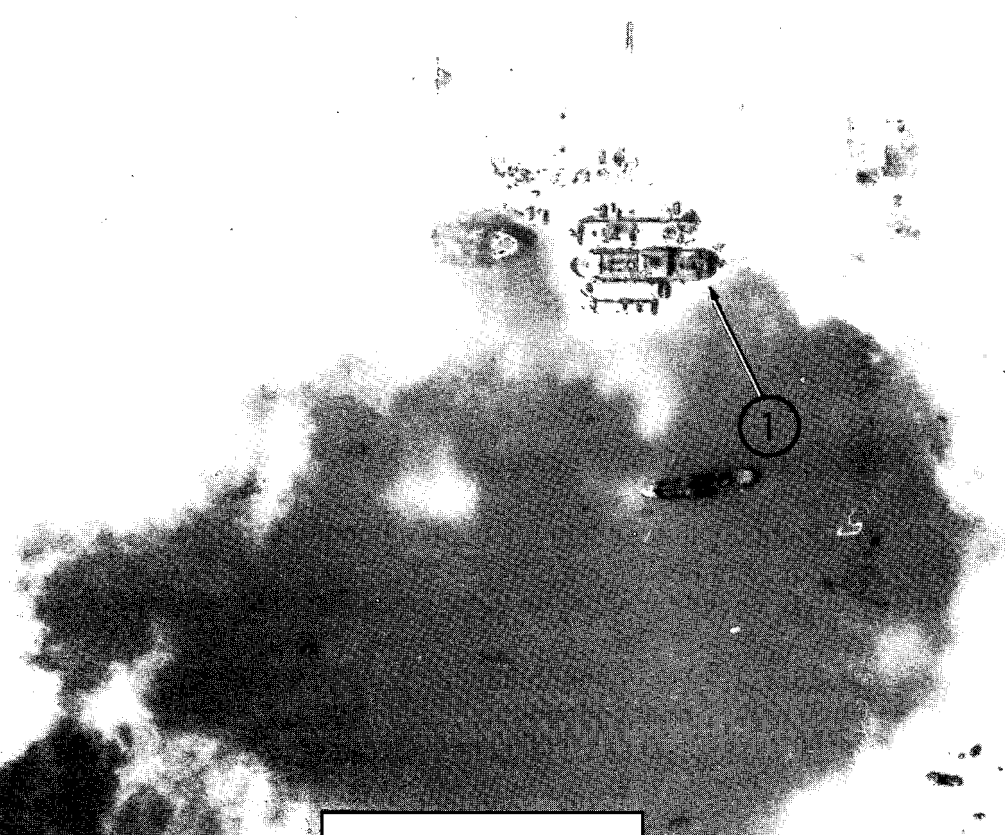
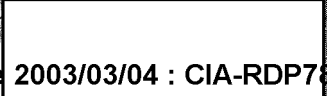


FIGURE 1



Approved For Release 2003/03/04 : CIA-RDP78T05161A000900010013-6

SECRET

25X1

Approved For Release 2003/03/04 : CIA-RDP78T05161A000900010013-6

Approved For Release 2003/03/04 : CIA-RDP78T05161A000900010013-6