

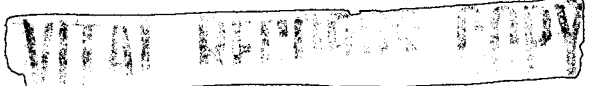
TOP SECRET



I  
MAGERY  
A  
NALYSIS  
D  
IVISION

PIR

PHOTOGRAPHIC INTELLIGENCE REPORT



SEVERODVINSK NAVAL BASE AND  
SHIPYARD 402, SEVERODVINSK, USSR



Declass Review by NIMA/DOD



25X

CIA/PIR 67164



25X

DATE JANUARY 66

COPY 90

PAGES 5

GROUP 1  
Excluded from automatic  
downgrading and declassification

TOP SECRET

25X1

Approved For Release 2003/05/05 : CIA-RDP78T05161A000800010085-8

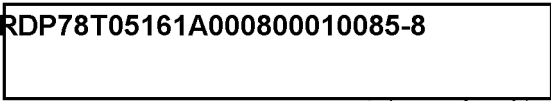
Approved For Release 2003/05/05 : CIA-RDP78T05161A000800010085-8

X1



Approved For Release 2008/05/05 : CIA-RDP78T05161A000800010085-8

TOP SECRET



25X

CIA/PIR-67164

CIA IMAGERY ANALYSIS DIVISION

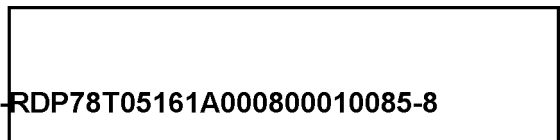
SEVERODVINSK NAVAL BASE AND SHIPYARD 402

SEVERODVINSK, USSR



25X

- 1 -



25X

Approved For Release 2008/05/05 : CIA-RDP78T05161A000800010085-8

TOP SECRET

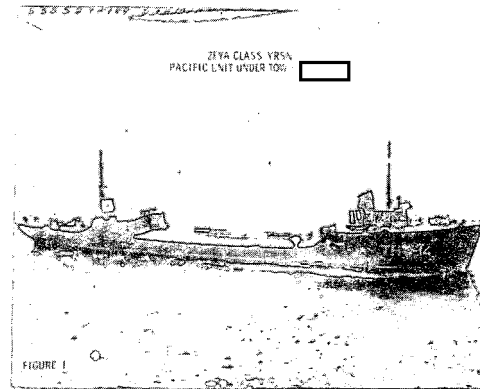
SHIPYARD : NAVAL BASE & SHIPYARD 402  
LOCATION : SEVERODVINSK, USSR  
GEO COORDS: 64-35N 039-50E

KEY TO ANNOTATIONS

1. Probable "J" Class SSG (apparent waterline length approx 290').  
A "J" Class SSG was previously observed in this position on [redacted]  
See annotation 1, Figure 5, [redacted] Large sail and wide beam contribute to this evaluation.
2. Possible "J" Class SSG (apparent waterline length approx 290') outboard of unidentified surface vessel.  
A "J" Class SSG was previously observed in this position. See annotation 3, Figure 5, [redacted]
3. Possible SS (visible waterline length approx 310'). A "G" Class SSB was previously observed along this quay slightly east of this position. See annotation 5, Figure 6, [redacted]
4. Large probable SS in floating dock.  
Probable submarine is no larger than 380' (approximate) and is partially shed-covered at either end. An "H" Class SSBN was observed in a dock at this position on [redacted] See annotation 15, Figure 6, [redacted]
5. Large floating crane.  
Crane is in the same position as the large floating crane seen on [redacted]  
[redacted] It cannot be determined whether or not the six cylindrical objects seen on the quay on [redacted] are still present. See annotations 5 and 6, Figure 5, [redacted]
6. Three large possible submarines.  
Three "E-II" Class SSGN were previously sighted berthed in these spaces on [redacted] The berth closest to entrance of the main launching basin appears to be unoccupied. LOA's could not be determined. See annotations 2, 4, and 7, Figure 4, [redacted]
7. Floating dock (LOA approx 430').  
Dock does not appear to be occupied. An "N" Class SSN was previously observed in this dock on [redacted] See annotations 8 and 9, Figure 4, [redacted]

8. Possible ZEYA Class YSRN (Nuclear Ship Support Barge). Although an apparent LOA of 250 feet was derived for this vessel on poor quality photography the unique small forward superstructure area atop a pronounced raised-one hull profile contribute to this evaluation. This vessel is similar, with minor exceptions to the after superstructure, to the recently received first small format photography taken of the ZEYA Class sighted in the Pacific (see Figure 1).

A vessel previously identified at the Severodvinsk Nuclear Submarine Special Support Facility as an "unidentified probable auxiliary (LOA [redacted]) is now identified on the basis of the small format photography as the ZEYA Class YSRN. This auxiliary was berthed alongside the Special Support Facility quay at the identical location on [redacted] (see annotation 1, Figure 8, [redacted] as is the possible ZEYA Class observed on [redacted]



9. Unidentified imagery located in the same position by the Nuclear Submarine Special Support Facility, Yagry Island, as the "E-II" Class SSGN previously reported on [redacted] See annotation 2, Figure 8, [redacted]

10. Possible "N" Class (LOA undetermined). White object at one end probably conforms to the "staybrite" belt. An "N" Class SSN was berthed in this position on [redacted] See annotation 11, Figure 4, [redacted]

11. Unidentified SS (LOA undetermined) inboard of several surface craft at the Nuclear Submarine Special Support Facility, Yagry Island. This submarine is located in the same position as the "N" Class SSN previously reported on [redacted] See annotation 4, Figure 8, [redacted]

12. Two unidentified objects on side launching way (LOA of each object approx 300'). The inboard object appears to be located in the same position as the previously reported unidentified object on the side launching way. (see annotation 2, Figure 3, [redacted] The second object, first observed on this coverage, is located parallel to the first object and is separated from it by a perpendicular distance of roughly 50 feet. This second object is located by the water's edge. There is no evidence on this coverage of any connecting structure between these two objects.

NOTE: All measurements have been made by the CIA/IAD project analyst. They should not be construed as being mensuration data compiled by the NPIC Technical Intelligence Division.

X1  
X1

TOP SECRET

SEVERODVINSK NAVAL BASE & STEEL PLANT  
SEVERODVINSK, USSR  
64-35N 039-50E

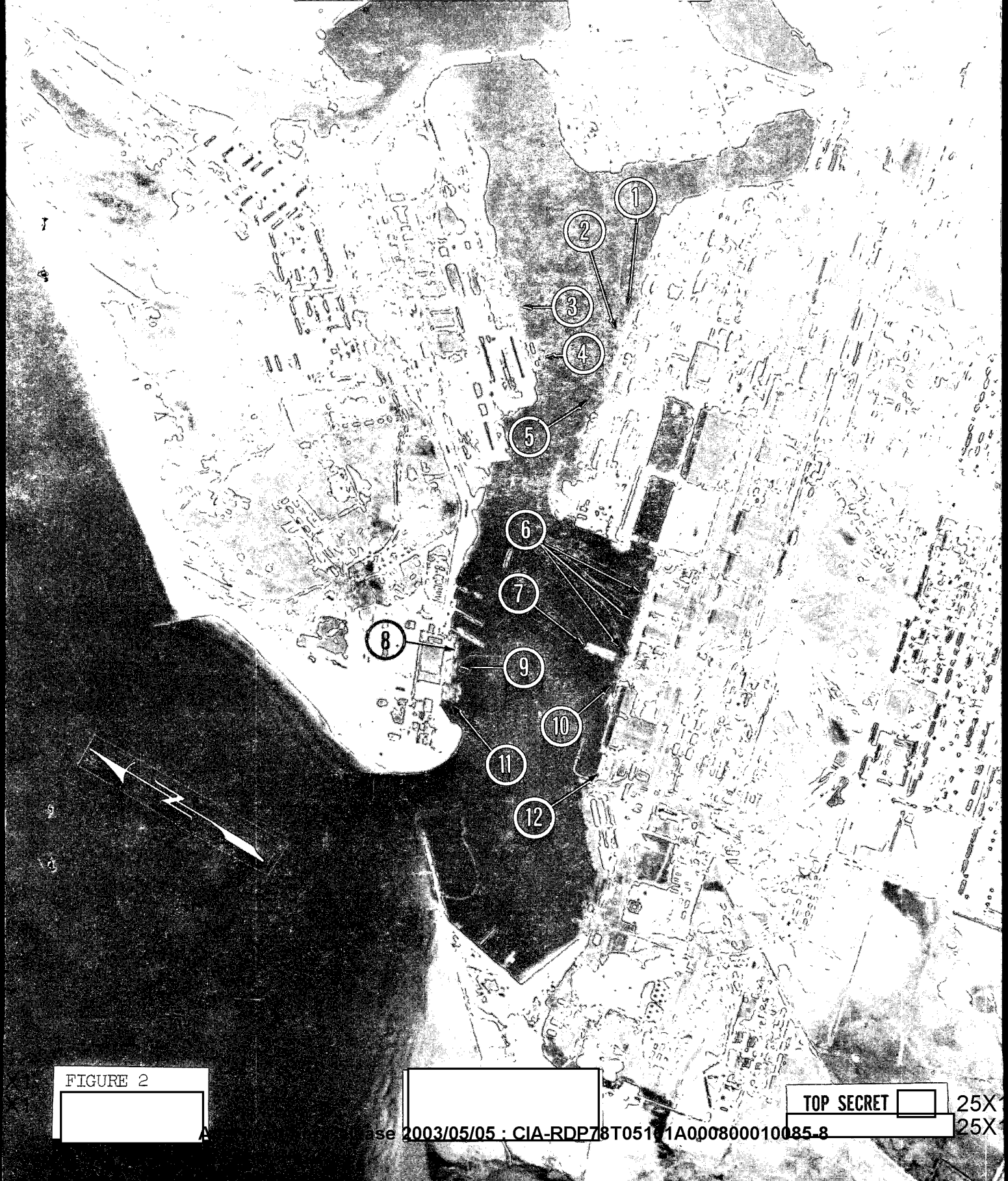


FIGURE 2

TOP SECRET

25X  
25X

X1

Approved For Release 2001/05/05 : CIA-RDP78T05161A000800010085-8

TOP SECRET

CIA/PIR-67164

25X1

CIA IMAGERY ANALYSIS DIVISION

REFERENCES

X1

[Redacted]

DOCUMENTS

CIA/PIR-67041, Severodvinsk Naval Base and Shipyard 402, Severodvinsk, USSR, Mission [Redacted] (TOP SECRET [Redacted])

X1

25X1

[Redacted]

25X1

**TOP SECRET**

1  
2  
3

0

4  
5  
6

**TOP SECRET**