

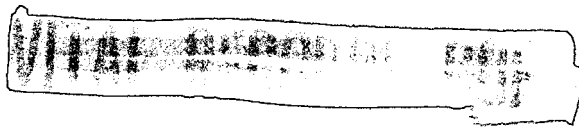
TOP SECRET



IMAGERY
ANALYSIS
DIVISION

PIR

PHOTOGRAPHIC INTELLIGENCE REPORT



AN SHAN IRON AND STEEL PLANT

AN SHAN, CHINA

Declass Review by
NIMA/DOD



25X

25X

CIA/PIR 65085

DATE FEB. 66

COPY 91

PAGES 4

GROUP 1
Excluded from automatic
downgrading and declassification

TOP SECRET

25X1

Approved For Release 2004/05/05 : CIA-RDP78T05161A000600010060-7

Approved For Release 2004/05/05 : CIA-RDP78T05161A000600010060-7

CIA IMAGERY ANALYSIS DIVISION

AN SHAN IRON AND STEEL PLANT

The An Shan Iron and Steel Plant occupies a major portion of the northwest sector of An Shan and is located at 41 08N - 122 59E.

The facility contains 10 blast furnaces, one of which is exceedingly large; three open hearth furnace buildings; 10 by-products coke oven batteries and an associated by-products section; and numerous milling buildings. Following is a summary of activity evidenced on Missions [redacted] All missions with cloud cover or poor quality imagery have been omitted.

The following facilities show evidence of being in operation; two coke oven batteries; the power plant; and five stacks of the No. 1 open hearth furnace building. Steam was being emitted from the roof vents of the No. 2 open hearth furnace building; however, there was no evidence of smoke being emitted from the stacks. The No. 3 open hearth furnace building was obscured by cloud cover.

Two coke oven batteries and the power plant were operating and two stacks of the No. 1 open hearth furnace building were emitting smoke.

Two coke oven batteries, one blast furnace, and the power plant were operating. Two stacks in both the No. 2 and 3 open hearth furnace buildings were emitting smoke. The level of activity of operation of the No. 1 open hearth furnace building could not be determined because it was obscured by smoke and steam.

Two coke oven batteries, the large blast furnace and one small blast furnace were operating and one stack in the No. 1 open hearth furnace building was emitting smoke.

K1

Approved For Release 2002/05/05 : CIA-RDP78T05161A000600010060-7

~~TOP SECRET~~

RDP78T05161A000600010060-7

PIR - 65085

25X

CIA IMAGERY ANALYSIS DIVISION

K1

[Redacted]

Six coke oven batteries, the by-products section, and one small blast furnace were operating, and three stacks of the No. 3 open hearth furnace building were emitting smoke.

K1

[Redacted]

The plant was very active, but smoke and haze precluded determination of specific units in operation.

K1

[Redacted]

Three coke oven batteries, the by-products section, the large blast furnace and one small blast furnace, and the power plant were operating. Three stacks of the No. 1 open hearth furnace building were emitting smoke and the No. 2 and No. 3 open hearth furnace buildings were emitting steam from the roof vents, but no smoke was being emitted from the furnace stacks.

K1

[Redacted]

Eight coke oven batteries, the by-products plant, the large blast furnace, and the power plant were operating. Two stacks of the No. 3 open hearth furnace building were emitting smoke and the No. 2 open hearth building was emitting steam from the roof vents, but no smoke from the furnace stacks.

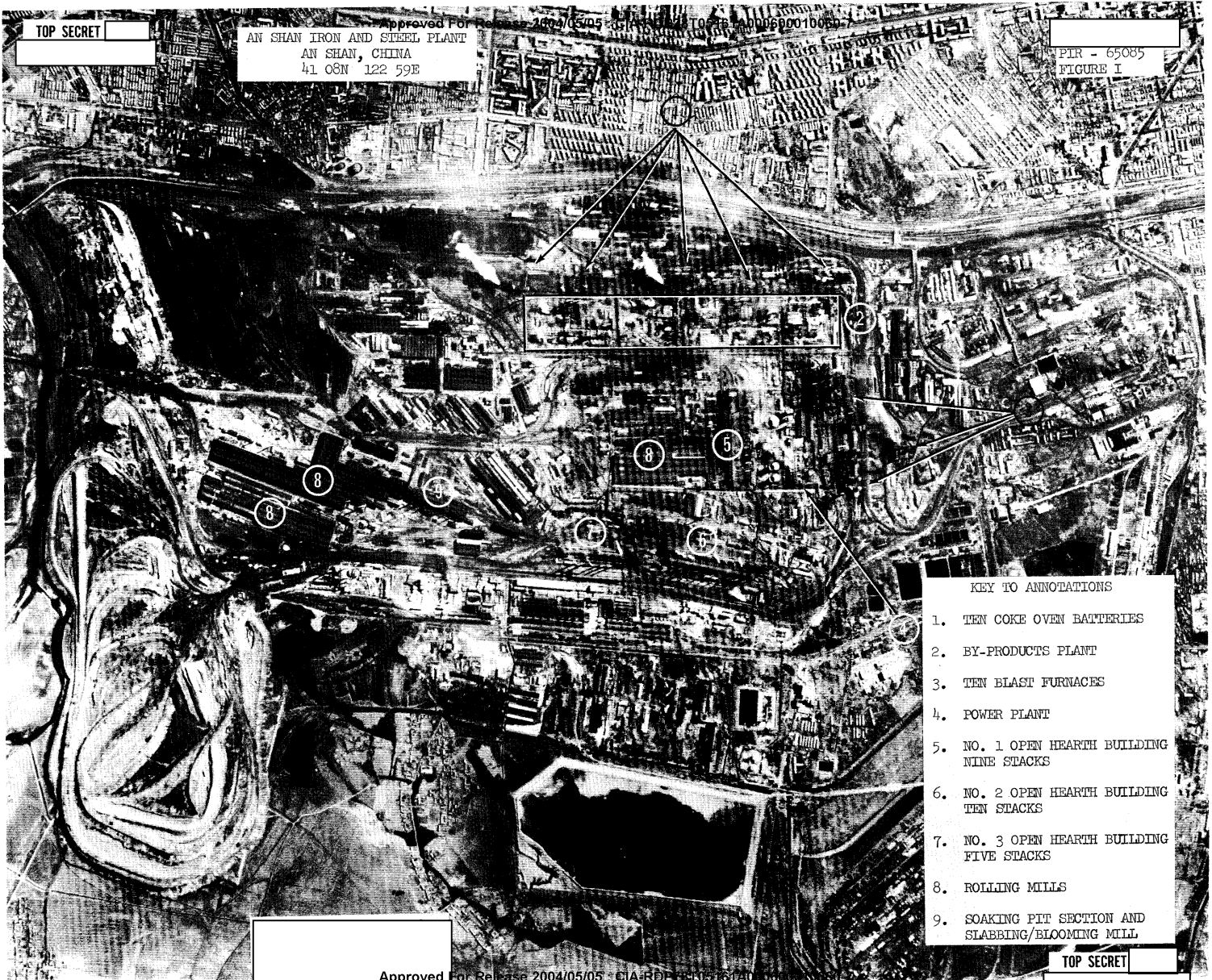
~~TOP SECRET~~

[Redacted]

25X

25X1
25X1

25X1



25X1

25X1
25X1

K1

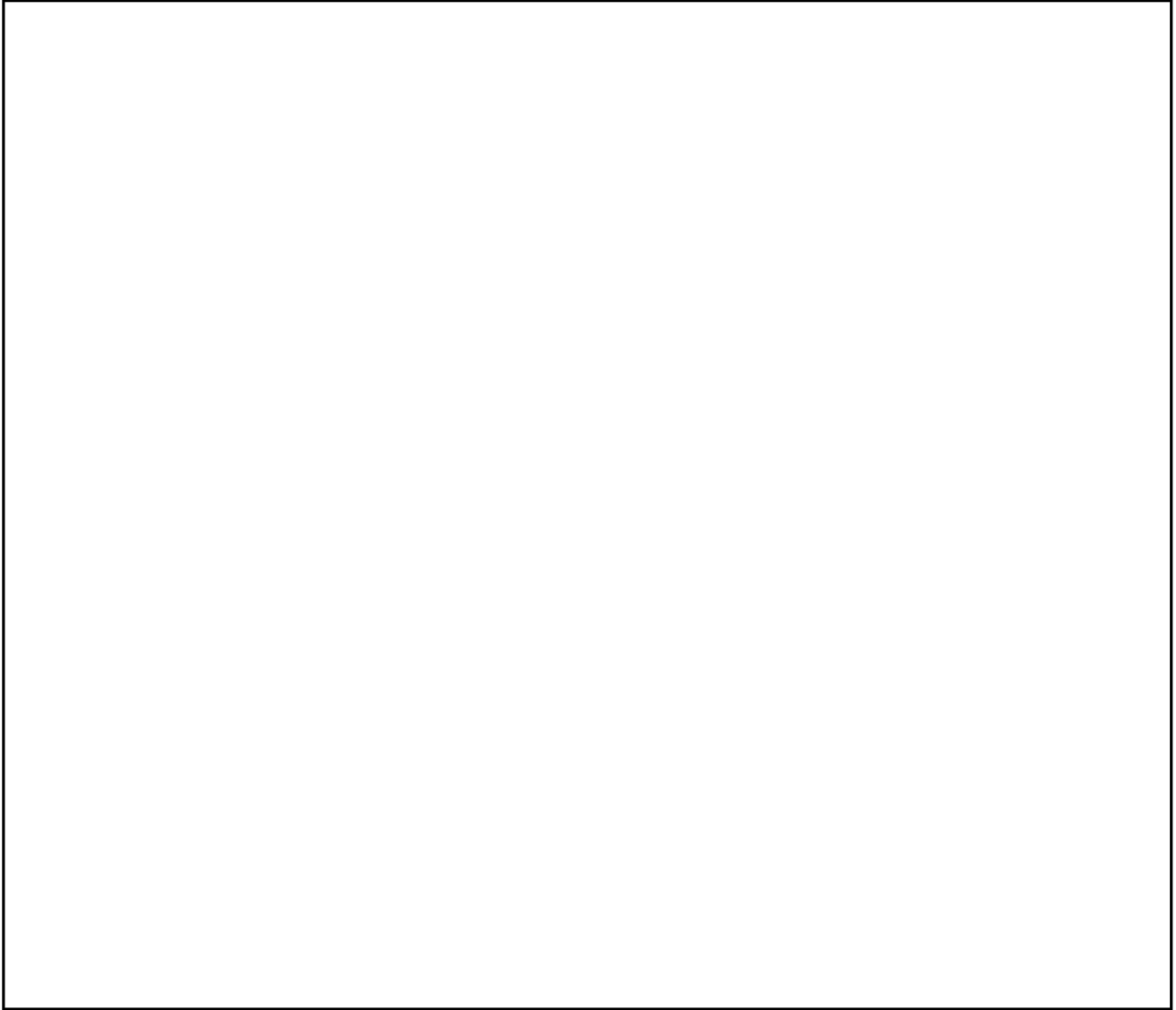
TOP SECRET

25X

CIA IMAGERY ANALYSIS DIVISION

25X

REFERENCES



MAPS AND CHARTS

U.S. Air Target Chart, Series 200, Sheet 0289-20HL, Scale 1:200,000
2nd Edition, January 1964 (SECRET)

Requirement - C-RR5-83,086

CIA/IAD Project - 30487-6

TOP SECRET

25

TOP SECRET

TOP SECRET