

TOP SECRET



IMAGERY
ANALYSIS
DIVISION

PIR

PHOTOGRAPHIC INTELLIGENCE REPORT



THAI NGUYEN IRON AND STEEL COMBINE
THAI NGUYEN, NORTH VIETNAM

Declass Review by
NIMA/DOD



25X

25X

CIA/PIR 65092



DATE Feb. 1966

COPY 31

PAGES 7

GROUP 1
Excluded from automatic
downgrading and declassification

TOP SECRET

25X1

Approved For Release 2004/05/05 : CIA-RDP78T05161A000600010048-1

Approved For Release 2004/05/05 : CIA-RDP78T05161A000600010048-1

Approved For Release 2004/05/05 : CIA-RDP78T05161A000600010048-1

RECORD COPY	COPY NO.	PUB. DATE	LOCATION	MASTER	DATE RECEIVED	LOCATION											
DISPOSITION DATE (CUT TO COPIES)						MAXIMUM											
CUT TO COPIES	0	DATE	7/72	CUT TO COPIES	DATE	COPIES DESTROYED											
CUT TO COPIES		DATE		CUT TO COPIES	DATE												
CUT TO COPIES		DATE		MASTER	DATE												
DATE			RECEIVED OR ISSUED			NUMBER OF COPIES			DATE			RECEIVED OR ISSUED			NUMBER OF COPIES		
MO.	DAY	YR.	REC'D	ISS'D	BAL	MO.	DAY	YR.	REC'D	ISS'D	BAL	REC'D	ISS'D	BAL			
9	4	68		8	8												
8	2	72															

Approved For Release 2004/05/05 : CIA-RDP78T05161A000600010048-1

CIA IMAGERY ANALYSIS DIVISION

THAI NGUYEN IRON AND STEEL COMBINE

The Thai Nguyen Iron and Steel Combine is located at 21 34N - 105 52E about 2.5 nautical miles south of the city of Thai Nguyen, North Vietnam.

All photography from [redacted] to the present was reviewed in search of production activity at the plant and related activity in adjacent areas. [redacted] showed the materials yard at the Thai Nguyen Combine to be replete with materials for bridge building. The materials observed included: pontoons, truss panels, plate girders, rails or "I" beams, various types of truss sections, and other materials of similar size. Prefabricated liquid storage tanks also were observed on this mission. [redacted]

[redacted] proved to be the only usable low level mission for this project.

[redacted] revealed that the rail bed, in question, which is still under construction, joins the existing rail line extending between the Thai Nguyen Iron and Steel Combine and the Thai Nguyen Ore Processing Plant at 21 34N - 105 56E. The rail bed then proceeds southward to a point near the Hanoi-Dong Dang Rail Line at 21 25N - 106 17E. Construction has been extended approximately 4 nm from the eastern terminus, as observed on the referenced December mission, and a bridge is under construction at 21 27N - 106 14E. Construction of the remainder of the rail bed is continuing.

X1
X1

Approved For Release 2004/05/05 : CIA-RDP78T05161A000600010048-1

TOP SECRET

THAI NGUYEN IRON AND STEEL COMBINE
THAI NGUYEN, NORTH VIETNAM
21 34N - 105 52E

PIR - 03092
FIGURE 1



KEY TO ANNOTATIONS

- 1. pontoons
- 2. Plate Girders
- 3. Warren Trusses
- 4. Truss Sections

5

TOP SECRET

X1
X1

25X

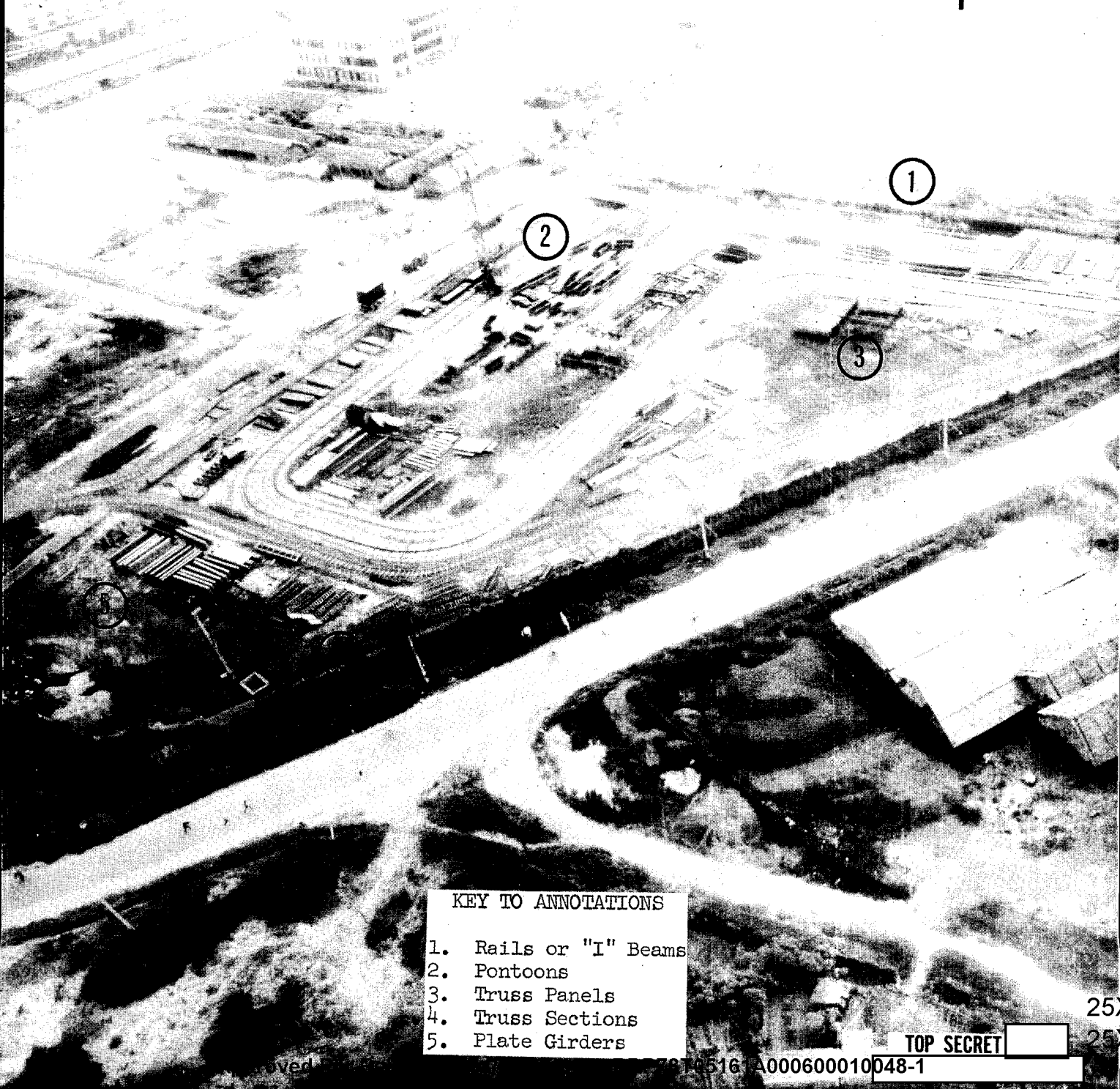
TOP SECRET

Approved For Release 2004/05/05 : CIA-RDP78T05161A000600010048-1

THAI NGUYEN IRON AND STEEL COMBINE
THAI NGUYEN, NORTH VIETNAM
21 34N - 105 52E

PIR - 65092
FIGURE 2

25X



KEY TO ANNOTATIONS

- 1. Rails or "I" Beams
- 2. Pontoons
- 3. Truss Panels
- 4. Truss Sections
- 5. Plate Girders

25X

TOP SECRET

25X

Approved For Release 2004/05/05 : CIA-RDP78T05161A000600010048-1

X1
X1

TOP SECRET

THAI NGUYEN IRON AND STEEL COMBINE
THAI NGUYEN, NORTH VIETNAM
21 34N - 105 52E

PIR - 65092
FIGURE 3

25X



KEY TO ANNOTATIONS

- 1. Prefabricated Storage Tanks
- 2. Warren Trusses
- 3. Various Bridge Members

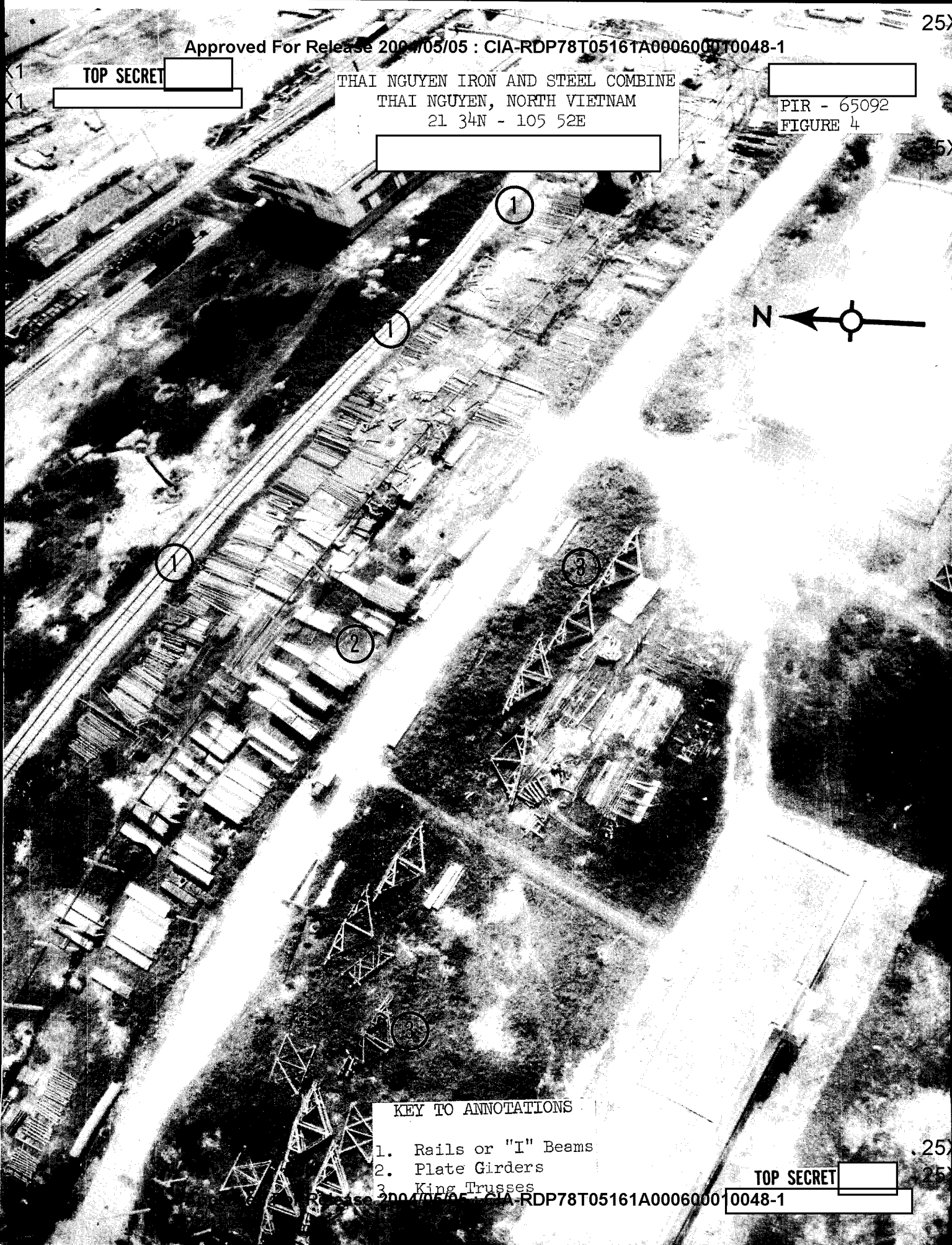
TOP SECRET

TOP SECRET [redacted]

THAI NGUYEN IRON AND STEEL COMBINE
THAI NGUYEN, NORTH VIETNAM
21 34N - 105 52E

[redacted]
PIR - 65092
FIGURE 4

[redacted]



KEY TO ANNOTATIONS

- 1. Rails or "I" Beams
- 2. Plate Girders
- 3. King Trusses

TOP SECRET [redacted]

Approved For Release 2004/05/05 : CIA-RDP78T05161A000600010048-1

TOP SECRET [redacted]

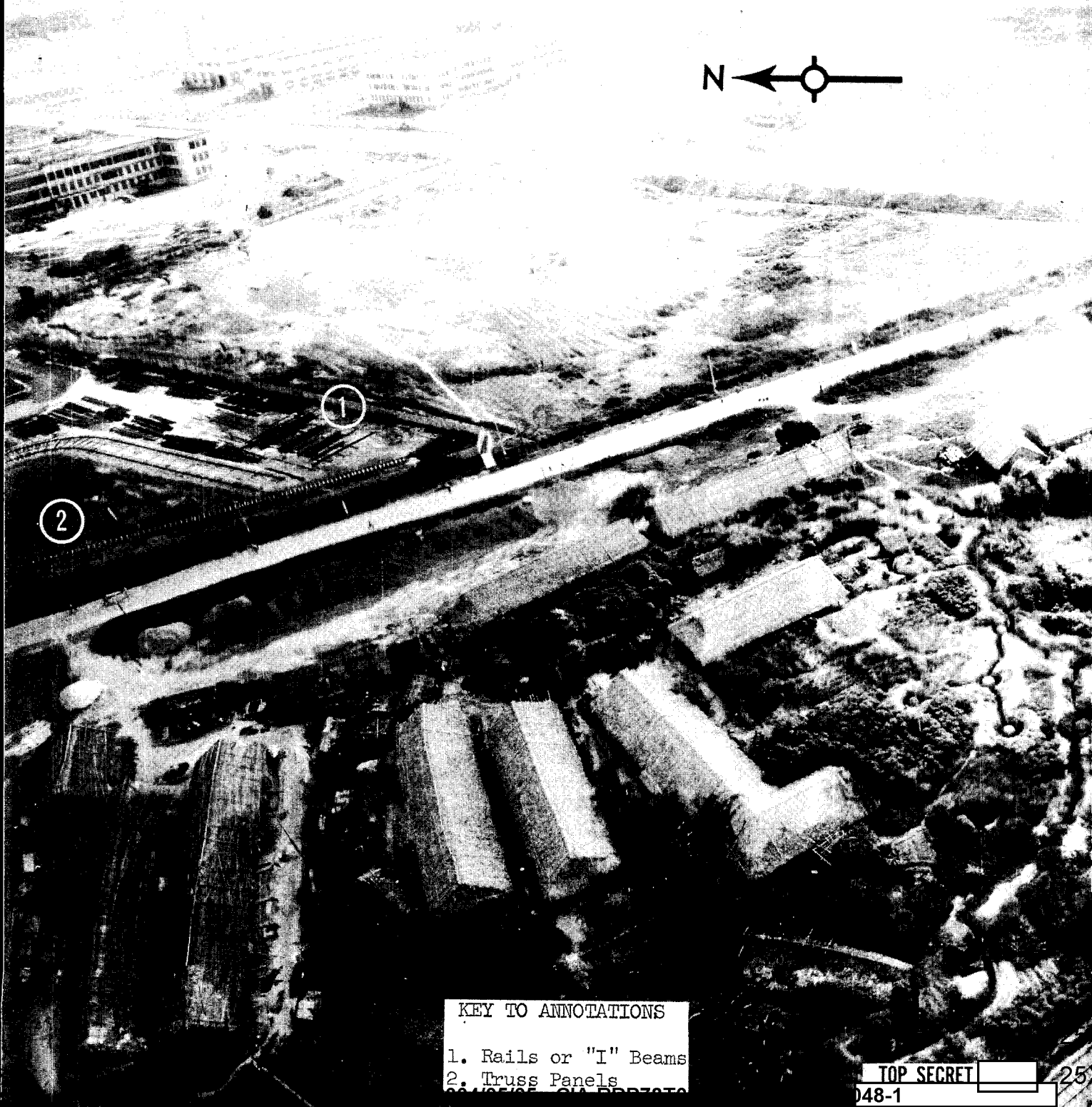
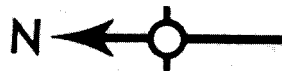
THAI NGUYEN IRON AND STEEL COMBINE

THAI NGUYEN, NORTH VIETNAM

21 34N - 105 52E

PIR - 65092

FIGURE 5



KEY TO ANNOTATIONS

- 1. Rails or "I" Beams
- 2. Truss Panels

TOP SECRET [redacted]

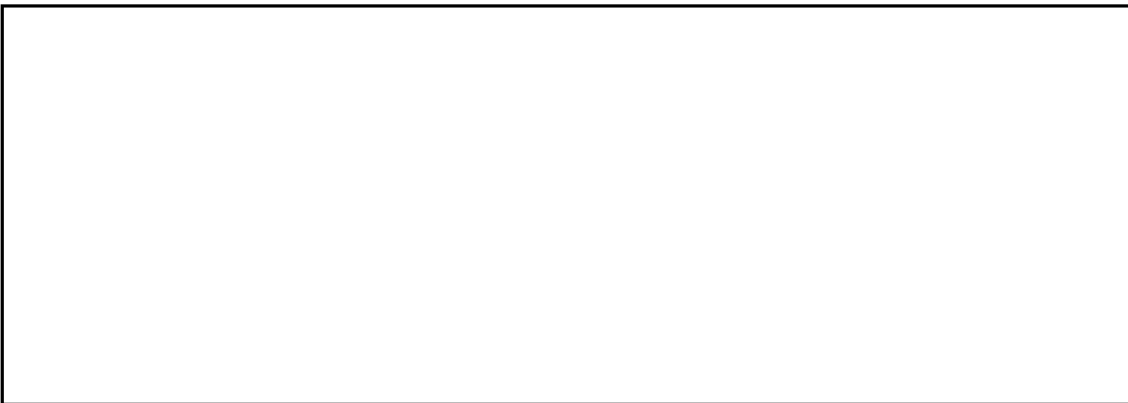
048-1

~~TOP SECRET~~

PIR - 65092

CIA IMAGERY ANALYSIS DIVISION

REFERENCES



MAPS AND CHARTS

USAF Operational Navigation Chart J-11 4th Edition
30 Nov 1964 Scale 1:1,000,000 (UNCLASSIFIED)

REQUIREMENT

C-CI6-83,301

CIA/IAD PROJECT

30759-6

~~TOP SECRET~~

TOP SECRET

4
-
7
1

2
-
-
4

TOP SECRET