

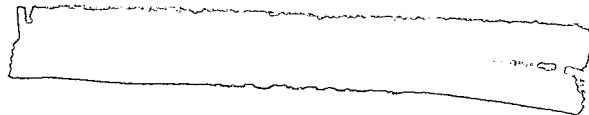
TOP SECRET



IMAGERY
ANALYSIS
DIVISION

PIR

PHOTOGRAPHIC INTELLIGENCE REPORT

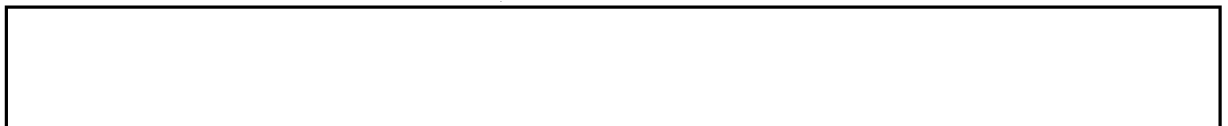


TA-YEH IRON AND STEEL PLANTS

TA-YEH, CHINA

Declass Review by NIMA/DOD

25X



CIA/PIR 65114

25X

DATE APRIL 1966

CCPY

PAGES 7

GROUP 1
Excluded from automatic
downgrading and declassification

TOP SECRET

25X1

Approved For Release 2004/05/05 : CIA-RDP78T05161A000600010044-5

Approved For Release 2004/05/05 : CIA-RDP78T05161A000600010044-5

Approved For Release 2004/05/05 : CIA-RDP78T05161A000600010044-5

TOP SECRET

FIR - 05114

CIA IMAGERY ANALYSIS DIVISION

TA-YEH IRON AND STEEL PLANTS
TA-YEH, CHINA

Approved For Release 2004/05/05 : CIA-RDP78T05161A000600010044-5

25X5

Approved For Release 2004/05/05 : CIA-RDP78T05161A000600010044-5

Approved For Release 2004/05/05 : CIA-RDP78T05161A000600010044-5

TOP SECRET

PIR - 05114

CIA IMAGERY ANALYSIS DIVISION

TA-YEH IRON AND STEEL PLANTS
TA-YEH, CHINA

The Ta-yeh Iron and Steel Plant at Shih-hui-yao is located at 30 12N - 115 07E approximately 10.5 nm NE of Ta-yeh, China. Also included in this report is an unidentified iron plant located at 30 11N - 114 59E approximately 6 nm north of Ta-yeh, China and approximately 7.5 nm west of the Ta-yeh Plant.

The Ta-yeh Iron and Steel Plant includes two open hearth furnace buildings having three stacks each, one of which may have milling facilities, a gas plant supplying the open hearth furnaces, a blooming/rolling mill, two probable rolling mills, a forge/foundry/fabrication structure, a coke/coal storage area, three water basins, and numerous other support facilities and buildings.

On photography of [redacted] none of the facilities at the plant were emitting smoke and the rail traffic was very light, however there was some barge traffic along the river side of the plant. On photography [redacted] (latest coverage available) the river barge traffic at the plant was light. Due to the poor quality of the photography, the amount of rail traffic could not be determined, and it appeared that there probably was no smoke emanating from the stacks. No major facilities have been erected since [redacted]

The unidentified iron plant includes four medium size blast furnaces and about 12 support buildings. The blast furnaces were not operating when observed on photography of [redacted] and there appeared to be little rail traffic. Photography of [redacted] revealed the plant to be at the same state as [redacted]. Little rail traffic was observed and the poor quality of the film precluded identification of operating facilities.

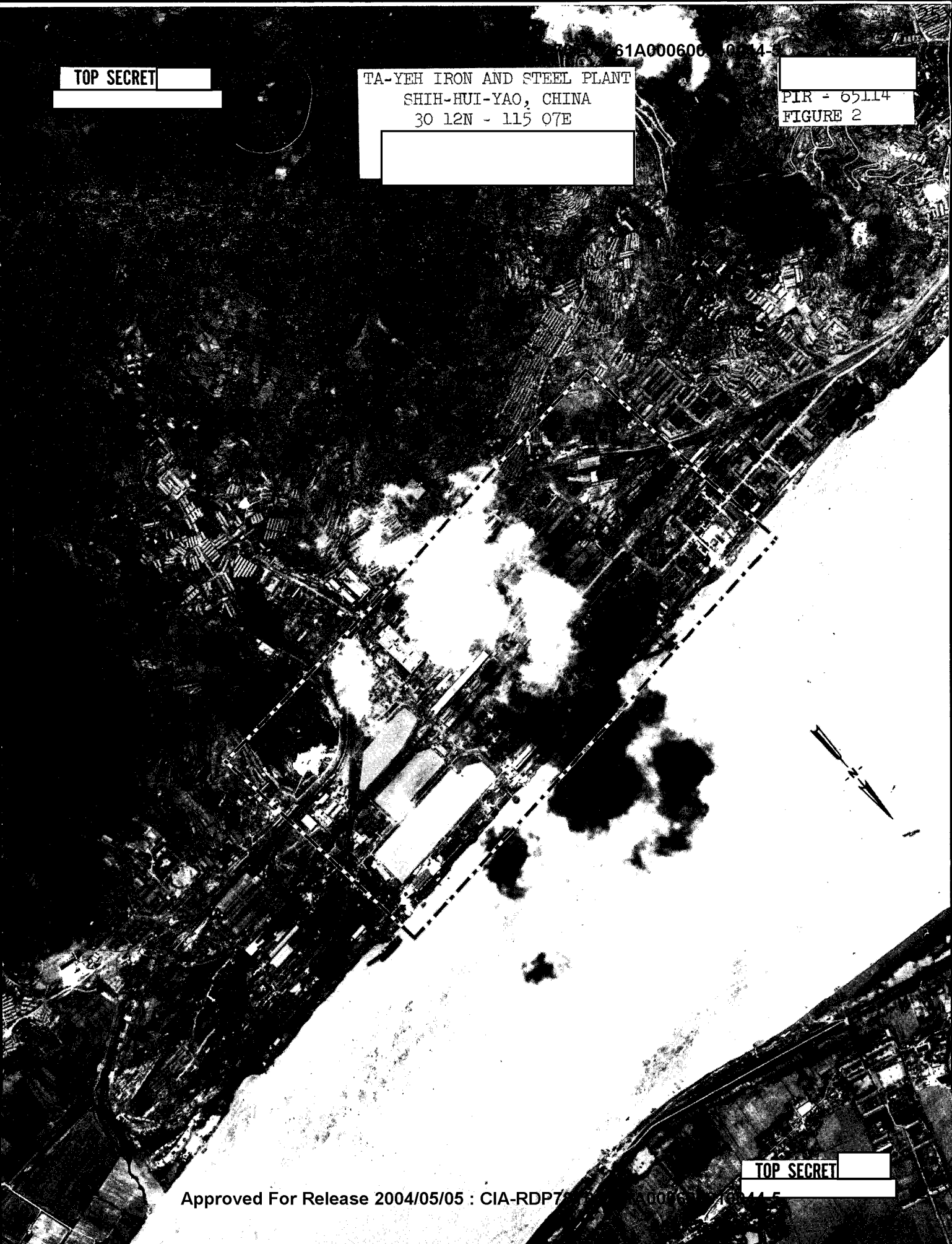
TOP SECRET

61A000606 0 14-5

TOP SECRET

TA-YEH IRON AND STEEL PLANT
SHIH-HUI-YAO, CHINA
30 12N - 115 07E

PIR - 65114
FIGURE 2



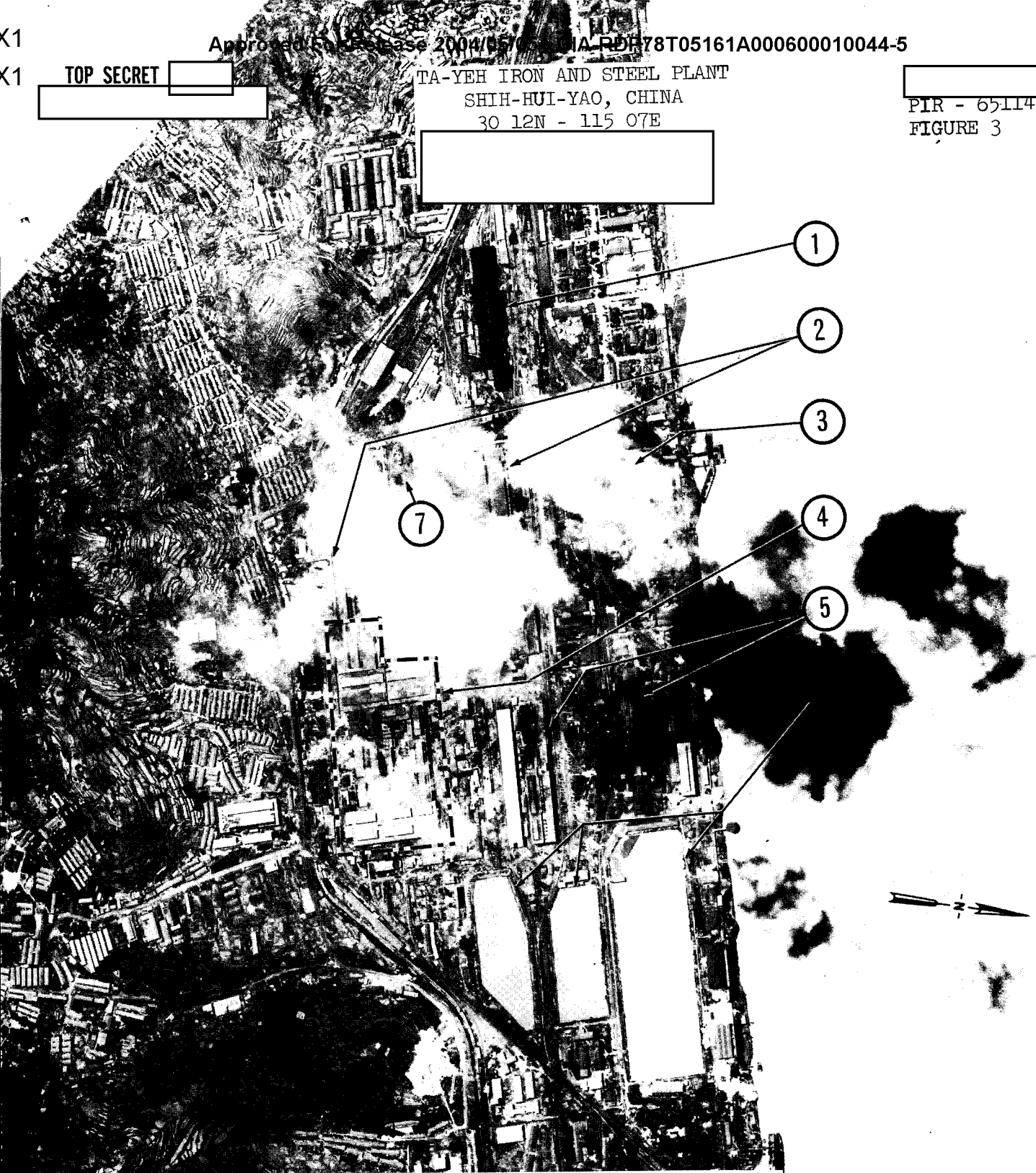
TOP SECRET

X1
X1

TOP SECRET

TA-YEH IRON AND STEEL PLANT
SHIH-HUI-YAO, CHINA
30 12N - 115 07E

PIR - 65114
FIGURE 3



KEY TO ANNOTATIONS

- 1. BLOOMING/ROLLING MILL
- 2. OPEN HEARTH FURNACE BUILDINGS
- 3. COKE/COAL STORAGE AREA
- 4. FORGE/FOUNDRY/FABRICATION BUILDING
- 5. PROBABLE ROLLING MILLS
- 6. WATER BASINS
- 7. GAS PLANT

TOP SECRET

4/15/05 18T0067 0060004004-5

257

TOP SECRET [REDACTED]

UNIDENTIFIED IRON PLANT
NEAR TA-YEH, CHINA
30 11N - 114 59E

[REDACTED]
FIGURE 4

[REDACTED]



FOUR BLAST FURNACES

TOP SECRET [REDACTED]

4/15/05 18T0067 0060004004-5

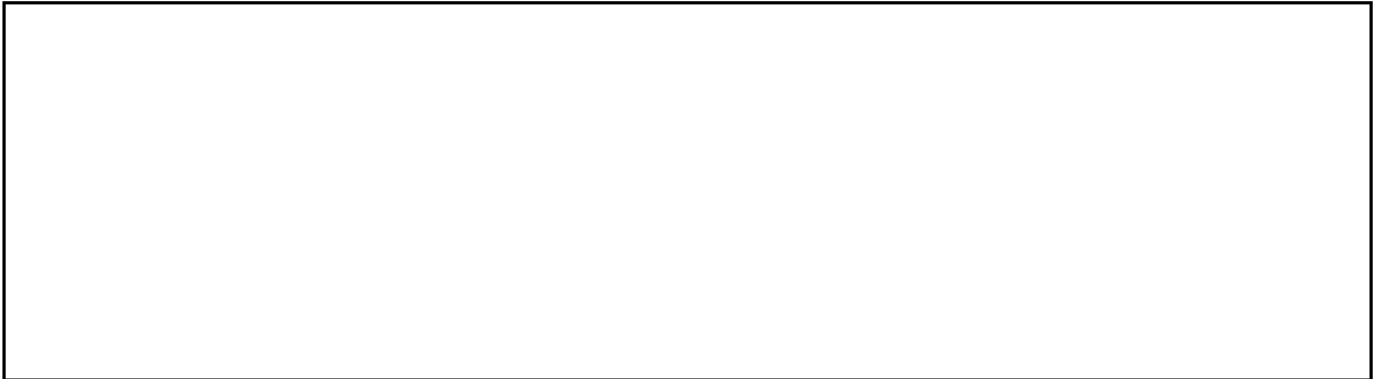
257

TOP SECRET

PIR - 05114

CIA IMAGERY ANALYSIS DIVISION

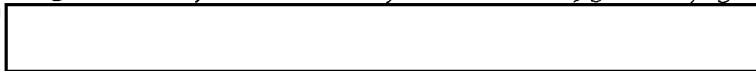
REFERENCES



MAPS AND CHARTS

US Air Target Chart, Series 200, Sheet M 0493-11HL, 3rd Edition, November 1965

(SECRET)



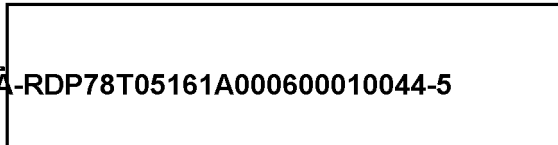
REQUIREMENT

C-RR5-83,086

CIA/IAD PROJECT

30487-6

TOP SECRET



TOP SECRET

TOP SECRET