

Top Secret

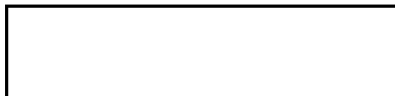


DIRECTORATE OF
INTELLIGENCE

Imagery Analysis Service Notes

15 May 1970

CIA internal use only



Top Secret

25X1



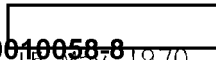
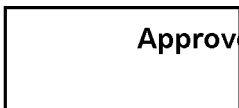
COPY 5 81
PAGES

DECLASS REVIEW by NIMA/DOD

25X1

Approved For Release 2002/06/18 : CIA-RDP78T04759A009700010058-8

Approved For Release 2002/06/18 : CIA-RDP78T04759A009700010058-8



15 May 1970

CENTRAL INTELLIGENCE AGENCY
Directorate of Intelligence
Imagery Analysis Service

IMAGERY ANALYSIS SERVICE NOTES NO. 13/70

CONTENTS

Page

USSR

Long Cryogenic Rail Cars at Tyuratam
Complex J Are for Liquid Hydrogen 3

NORTH KOREA

North Korean Army Has Improved River
Crossing Capability 5

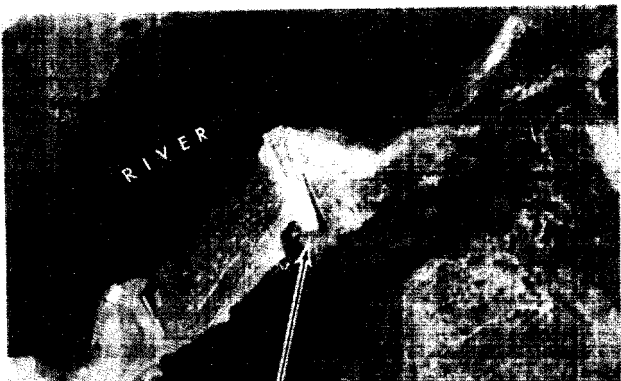


Next 1 Page(s) In Document Exempt

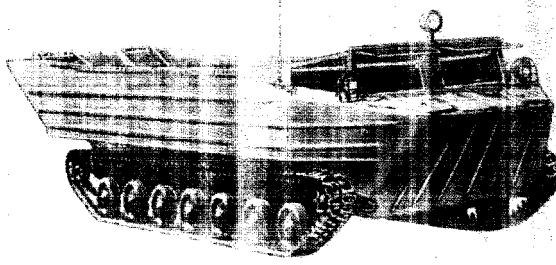
25X1

25X1
25X1

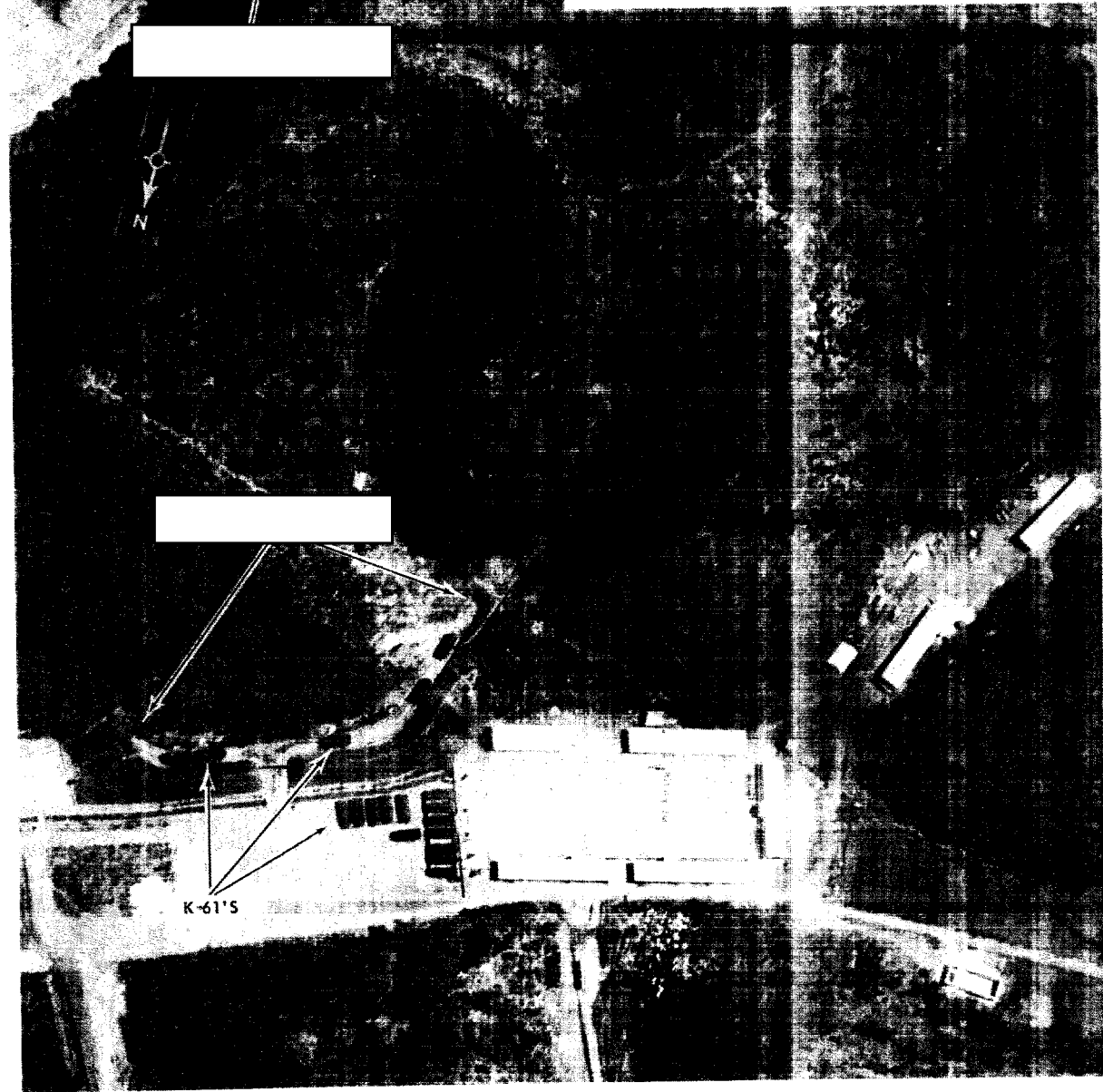
25X1



AMPHIBIOUS TRACKED TRANSPORTER, K-61



25X1B



25X1B

FIGURE 3. SOVIET AMPHIBIOUS VEHICLES, MUNMYONG NI BARRACKS & STORAGE AREA, NORTH KOREA, [redacted]

25X1D

25X1

25X1

25X1

Approved

For Release 2002/06/18 : CIA-RDP78T04759A009700010058-8

TOP SECRET

25X1
25X1
25X1

NORTH KOREA

North Korean Army Has Improved River Crossing Capability

The river crossing capability of the North Korean Army has recently been improved by the addition of Soviet K-61 amphibious tracked transporters.

25X1D

Photography since [redacted] has revealed K-61's for the first time at the five North Korean military installations. A total of 46 of the vehicles have been seen. The installations where the K-61's are located are near Pyongyang and the western portion of the DMZ. They are all situated near rivers, and one has a [redacted] connecting the installation to the edge of the river (see Figure 3). None of the five installations has had a previous amphibious association.

25X1B

The K-61 is a 1950-model, unarmored, full-tracked amphibious vehicle used to transport cargo, equipment, and personnel in river crossing operations. It can carry 40-50 troops.

[redacted]

25X1

TOP SECRET

[redacted]

25X1

[redacted]

25X1

Top Secret



Top Secret